



WASHINGTON FREEDOM

2009 MEDIA GUIDE

WASHINGTON FREEDOM™

2009 SCHEDULE

DATE	GAME	TIME	TV
SUN., MARCH 29	AT LOS ANGELES SOL	6 P.M.	FSC
SAT., APRIL 11	CHICAGO RED STARS	6 P.M.	FSC
SAT., APRIL 18	BOSTON BREAKERS	7 P.M.	
SUN., APRIL 26	AT FC GOLD PRIDE	6 P.M.	FSC
SUN., MAY 3	SAINT LOUIS ATHLETICA	6 P.M.	FSC
SUN., MAY 17	AT BOSTON BREAKERS	6 P.M.	FSC
SUN., MAY 23	SKY BLUE FC (AT RFK)	5 P.M.	
SUN., MAY 31	FC GOLD PRIDE	4 P.M.	
SUN., JUNE 7	AT LOS ANGELES SOL	6 P.M.	FSC
SAT., JUNE 13	CHICAGO RED STARS (AT RFK)	5 P.M.	
SAT., JUNE 20	AT SAINT LOUIS ATHLETICA	8 P.M.	
WED., JUNE 24	AT BOSTON BREAKERS	7 P.M.	
WED., JULY 1	AT CHICAGO RED STARS	8:30 P.M.	
SUN., JULY 5	LOS ANGELES SOL	6 P.M.	FSC
WED., JULY 15	AT SKY BLUE FC	7 P.M.	
SAT., JULY 18	SAINT LOUIS ATHLETICA (AT RFK)	5:30 P.M.	
SUN., JULY 26	AT CHICAGO RED STARS	7 P.M.	
WED., JULY 29	BOSTON BREAKERS	8 P.M.	
SAT., AUG. 1	AT FC GOLD PRIDE	6 P.M.	
SAT., AUG. 8	SKY BLUE FC	7 P.M.	
SAT., AUG. 15	FIRST ROUND, WPS PLAYOFFS	TBD	
WED., AUG. 18	SUPER SEMIFINAL, WPS PLAYOFFS	TBD	
SAT., AUG. 22	WPS FINAL	TBD	

TABLE OF CONTENTS

TEAM DIRECTORY	3
FREEDOM HISTORY	4
MAUREEN HENDRICKS, CHAIRWOMAN, FREEDOM SOCCER LLC	8
JIM GABARRA, HEAD COACH	9
CLYDE WATSON, ASSISTANT COACH	10
NICCI WRIGHT, GOALKEEPER COACH	11
ABOUT THE MARYLAND SOCCERPLEX	12
DIRECTIONS TO THE MARYLAND SOCCERPLEX	14
TICKETS/SEATING INFORMATION	15
PLAYER ROSTERS AND BIOS	16
BOMPASTOR, DEDYCKER, DE VANNA, EYOROKON, GILBEAU, HUFFMAN, JANS, KARNISKI, KELLER, LINDSEY, LOHMAN, LONG, MCLEOD, MOROS, SAUERBRUNN, SAWA, SCURRY, SINGER, SPISAK, WAMBACH, WHITEHILL, ZIMMECK, GLORY	
OPONENTS	45
ABOUT THE LEAGUE	65
TONYA ANTONUCCI, COMMISSIONER	70
MARY HARVEY, CHIEF OPERATING OFFICER	71
VICKI VEENKER, LEGAL COUNSEL	72
2009 LEAGUE SCHEDULE	73
FOX SOCCER CHANNEL	78
WPS POSTSEASON	80
WPS RULES	81
WPS REFEREE POOL	84
WPS CAMPS	85
MEDIA INFORMATION	87
PLAYER HEAD SHOT CHART	90

NRH Regional Rehab Sports Medicine

For injuries on or off
the field.



Call **1-888-44SPORT** for fast free advice
from a certified athletic trainer. Or log onto
www.medstarsportshealth.com

NRH Regional Rehab
Sports Medicine



Montgomery General
Sports Medicine

MedStar SportsHealth

Official medical team for the Washington Freedom

TEAM DIRECTORY

TEAM OFFICES:

MARYLAND SOCCERPLEX
DISCOVERY SPORTS CENTER
18031 CENTRAL PARK CIRCLE
BOYDS, MD 20841
TELEPHONE: 240-449-1600
TOLL FREE: 866-761-GOAL (4625)
TICKETS: 202-547-KICK (5425)
FAX: 240-449-1631
WWW.WASHINGTONFREEDOM.COM

FRONT OFFICE STAFF:

MAUREEN HENDRICKS, CHAIRWOMAN, FREEDOM SOCCER LLC
DREW LARSEN, LEGAL COUNSEL AND DIRECTOR OF BUSINESS PARTNERSHIPS
HANS TRESOLINI, DIRECTOR OF MARKETING
KRISTEN ANGELONE, DIRECTOR OF SPONSORSHIP SALES
LOUISE WAXLER, DIRECTOR OF OPERATIONS
JIM HIGGINS, DIRECTOR OF COMMUNICATIONS
JUAN BERNEDO, DIRECTOR OF SOCCER CLUB ACTIVITIES
WIN PUFFER, DIRECTOR OF SOCCER CLUB
MARC DOMBEK, TICKET SALES REPRESENTATIVE
SHANTAI DIXON, TICKET SALES REPRESENTATIVE
MARIAH CLARKE, CUSTOMER SERVICE REPRESENTATIVE
CHRISTEN KARNISKI, MARKETING ASSOCIATE
KAY MCGOLDRICK, VOLUNTEER COORDINATOR
DAN HEFFELFINGER, EQUIPMENT MANAGER

COACHING STAFF:

JIM GABARRA, HEAD COACH
CLYDE WATSON, ASSISTANT COACH
NICCI WRIGHT, GOALKEEPER COACH



ABOUT THE FREEDOM

THE WASHINGTON FREEDOM RETURNS TO ACTION IN 2009 AS A CHARTER MEMBER OF WOMEN'S PROFESSIONAL SOCCER (WPS). THE FREEDOM WILL BE ONE OF SEVEN FRANCHISES IN 2009, WITH ATLANTA AND PHILADELPHIA SCHEDULED TO JOIN WPS IN 2010.

THE WASHINGTON FREEDOM BEGINS PLAY IN WPS HAVING ALREADY ESTABLISHED A TRADITION OF EXCELLENCE OVER THE PAST EIGHT YEARS. PLAYING ITS FIRST MATCH IN 2001 AS A CHARTER MEMBER OF THE WOMEN'S UNITED SOCCER ASSOCIATION (WUSA), THE FREEDOM ADVANCED TO THE FOUNDERS CUP (THE LEAGUE'S CHAMPIONSHIP GAME) IN 2002 AND 2003, WINNING THE TITLE IN 2003.

WHEN THE WUSA SUSPENDED OPERATIONS AFTER THE 2003 SEASON, THE FREEDOM FOCUSED ON BUILDING A EUROPEAN-STYLE SOCCER CLUB. THE FREEDOM COMPETED IN EXHIBITION MATCHES IN 2004 AND 2005, WHILE ALSO EMPHASIZING THE GROWTH OF YOUTH AND AMATEUR TEAMS.

IN 2006 THE FREEDOM TOOK THE FIELD AS AN "ASSOCIATE" MEMBER OF THE USL W-LEAGUE BEFORE BECOMING A FULL MEMBER OF THE W-LEAGUE IN 2007. CONTINUING ITS CHAMPIONSHIP TRADITION, THE FREEDOM WON THE W-LEAGUE NORTH AMERICAN TITLE IN 2007 AND REACHED THE SEMIFINALS IN 2008.

THE FREEDOM WAS FOUNDED BY JOHN HENDRICKS, FOUNDER AND CHAIRMAN OF DISCOVERY COMMUNICATIONS, AND IS OWNED AND OPERATED BY JOHN AND HIS WIFE MAUREEN. JIM GABARRA, THE ONLY HEAD COACH IN FRANCHISE HISTORY, CONTINUES TO COACH THE FREEDOM ALONG WITH LONGTIME ASSISTANT COACH CLYDE WATSON.

YEAR-BY-YEAR PERFORMANCE

YEAR	LEAGUE	W	L	T	PTS	PLAYOFFS
2001	WUSA	6	12	3	21	DID NOT QUALIFY
2002	WUSA	11	5	5	38	FOUNDER'S CUP FINALIST
2003	WUSA	9	8	4	31	FOUNDER'S CUP CHAMPION
2007	W-LEAGUE	12	1	1	37	NORTH AMERICAN CHAMPION
2008	W-LEAGUE	11	1	2	35	NATIONAL SEMIFINALIST

HOW THE FREEDOM WAS BUILT

THE 2009 WASHINGTON FREEDOM ROSTER WAS BUILT IN FIVE STEPS:

1. PLAYERS FROM THE U.S. WOMEN'S NATIONAL TEAM PLAYER POOL WERE ALLOCATED TO EACH OF THE SEVEN WPS FRANCHISES (THREE PER TEAM). WASHINGTON RECEIVED ABBY WAMBACH, CAT WHITEHILL AND ALI KRIEGER.
2. IN SEPTEMBER, A FOUR ROUND DRAFT FOR THE WPS NEGOTIATION RIGHTS OF INTERNATIONAL PLAYERS TOOK PLACE. WASHINGTON DRAFTED THE RIGHTS TO JAPAN'S HOMARE SAWA, FRANCE'S SONIA BOMPASTOR AND LOUISA NECIB AND AUSTRALIA'S LISA DE VANNA. AFTER THE DRAFT EACH TEAM WAS ALLOWED TO SUBMIT DISCOVERY CLAIMS ON TWO MORE INTERNATIONAL PLAYERS. THE FREEDOM ACQUIRED CANADA'S ERIN MCLEOD AND THE RIGHTS TO NORWAY'S LENE MYKJALAND.
3. IN OCTOBER, A FOUR ROUND GENERAL DRAFT WAS HELD THAT WAS OPEN TO UNDRAFTED INTERNATIONAL PLAYERS AND DOMESTIC PLAYERS THAT HAD EXHAUSTED THEIR NCAA ELIGIBILITY PRIOR TO THE 2008 SEASON. WASHINGTON DRAFTED SARAH HUFFMAN, BECKY SAUERBRUNN, LORI LINDSEY AND EMILY JANS.
4. A 10 ROUND DRAFT WAS HELD IN JANUARY OPEN TO ALL PLAYERS WHO HAD PREVIOUSLY GONE UNDRAFTED AND COLLEGE SENIORS WHO HAD EXHAUSTED THEIR NCAA ELIGIBILITY AT THE END OF THE 2008 SEASON. WASHINGTON SELECTED ALLIE LONG, ALEX SINGER, JILL GILBEAU, PARRISSA EYOROKON, BRIANA SCURRY, REBECCA MOROS, SARAH SENTY, KATI JO SPISAK, CLAIRE ZIMMECK AND CHRISTEN KARNISKI. DURING THE DRAFT THE FREEDOM ALSO ACQUIRED JOANNA LOHMAN FROM SAINT LOUIS ATHLETICA, WHO HAD SELECTED HER IN THE GENERAL DRAFT.
5. TRYOUTS WERE HELD AT THE END OF FEBRUARY WITH NINE PLAYERS RECEIVING AN INVITATION TO PRESEASON CAMP. FROM PRESEASON CAMP, KRISTIN DE DYCKER AND MADISON KELLER WERE ADDED TO THE ROSTER AS DEVELOPMENTAL PLAYERS.



It all starts here...



800•USA•AYSO
www.soccer.org



**FRONT OFFICE &
COACHING STAFF**



MAUREEN D. HENDRICKS

CHAIRWOMAN, FREEDOM SOCCER LLC.

AS CHAIRWOMAN OF FREEDOM SOCCER LLC, MAUREEN DONOHUE HENDRICKS MANAGES HER FAMILY'S INVESTMENT IN WOMEN'S PROFESSIONAL SOCCER. THE WASHINGTON FREEDOM WAS ONE OF THE PIONEERING TEAMS OF THE WOMEN'S UNITED SOCCER ASSOCIATION (WUSA). TODAY THE TEAM IS PART OF THE NEWLY CREATED WOMEN'S PROFESSIONAL SOCCER (WPS) LEAGUE, WHICH LAUNCHES ITS INAUGURAL SEASON IN MARCH 2009.

A PASSIONATE SUPPORTER OF YOUTH ATHLETICS AND GENDER-EQUALITY IN TEAM SPORTS, MAUREEN PLAYED A LEADERSHIP ROLE IN THE PUBLIC-PRIVATE PARTNERSHIP THAT CREATED THE WORLD-CLASS MARYLAND SOCCERPLEX IN GERMANTOWN, MD. MAUREEN SERVED 11 YEARS AS VICE-CHAIRMAN OF THE MARYLAND SOCCER FOUNDATION, INC., THE NON-PROFIT ENTITY THAT RAISED AND MANAGED THE PRIVATE SECTOR FUNDING FOR THE 24-FIELD COMPLEX. THE SUCCESSFUL FINANCIAL MODEL SHE HELPED TO CREATE FUNCTIONS AS A NATIONAL STANDARD FOR COMMUNITY SPORTS FACILITIES. FOR HER WORK IN MANAGING YOUTH SOCCER TEAMS, ADVOCATING FOR PUBLIC AND PRIVATE SUPPORT OF YOUTH SOCCER FACILITIES, AND HELPING TO SPEARHEAD WOMEN'S PROFESSIONAL SOCCER, THE NATIONAL SOCCER COACHES ASSOCIATION OF AMERICA (NSCAA) NAMED MAUREEN AS AN HONORARY ALL AMERICAN AT ITS 2006 MEETING IN INDIANAPOLIS.

MAUREEN DONOHUE WAS BORN IN SCRANTON, PENN. AND RAISED IN UNCASVILLE, CONN., WHERE SHE GRADUATED VALEDICTORIAN IN 1972 FROM ST. BERNARDS GIRLS' HIGH SCHOOL. IN 1976, SHE GRADUATED SUMMA CUM LAUDE WITH A B.S. IN APPLIED MATHEMATICS FROM THE UNIVERSITY OF RHODE ISLAND. IN 1980, SHE EARNED HER MASTER'S DEGREE IN NUMERICAL SCIENCE FROM THE JOHNS HOPKINS UNIVERSITY.

HER CAREER AS A COMPUTER SYSTEMS ANALYST INCLUDED POSITIONS AT THE NAVAL OCEANOGRAPHIC OFFICE, SCI, AND COMPUTER SCIENCE CORPORATION (CSC). AT CSC MAUREEN WORKED AS A CONTRACTOR TO NASA, AT THE GODDARD SPACE FLIGHT CENTER, WHERE SHE WAS SOLE PROGRAMMER FOR THE SPACE LAB'S ANCILLARY OUTPUT PROCESSING FOR ONBOARD SCIENTIFIC EXPERIMENTS. MAUREEN ALSO CONTRIBUTED TO THE EARLY FORMATION OF DISCOVERY COMMUNICATIONS BY BEING A VITAL SUPPORTER AND SOUNDING BOARD FOR HER HUSBAND, JOHN S. HENDRICKS, THE FOUNDER AND CHAIRPERSON.

MAUREEN AND HER HUSBAND, JOHN, CREATED THE JOHN AND MAUREEN HENDRICKS CHARITABLE FOUNDATION WHICH CURRENTLY PROVIDES GRANT FUNDING IN EXCESS OF \$2 MILLION ANNUALLY TO SUPPORT PROJECTS IN HIGHER EDUCATION, YOUTH SPORTS, AND BASIC SCIENCE RESEARCH. MAUREEN IS AN AWARD-WINNING QUILT ARTIST, SOUGHT-AFTER JUDGE AND DISCERNING TEXTILE ARTS COLLECTOR. SHE SERVED SIX YEARS ON THE BOARD OF DIRECTORS OF THE STUDIO ARTS QUILT ASSOCIATION HELPING TO PROMOTE AND SUPPORT THE FIELD.

MAUREEN AND HER HUSBAND RESIDE IN CHEVY CHASE, MD. THEY HAVE TWO ADULT CHILDREN, ELIZABETH AND ANDREW.

JIM GABARRA

HEAD COACH

JIM GABARRA WAS NAMED HEAD COACH OF THE WASHINGTON FREEDOM IN AUGUST 2000, GUIDING THE TEAM TO A WUSA CHAMPIONSHIP IN 2003 AND A W-LEAGUE NORTH AMERICAN CHAMPIONSHIP IN 2007.

BEFORE JOINING THE FREEDOM, JIM SERVED AS HEAD COACH OF THE WORLD ALL-STARS IN 1999 AND 2000 ON THE TOYS "R" US UNITED STATES NATIONAL TEAM INDOOR VICTORY TOUR, AS HEAD COACH OF THE WASHINGTON WARTHOGS OF THE CISL FROM 1994-1998 AND STINTS AS PLAYER-COACH FOR THE MILWAUKEE WAVE OF THE NPSL FROM 1992-1993 AND LOUISVILLE THUNDER OF THE AISA FROM 1985-1987.

JIM WAS A MEMBER OF THE U.S. NATIONAL TEAM FROM 1986-1989, EARNING 14 CAPS, AND PLAYED FOR THE U.S. OLYMPIC TEAM AT THE SEOUL OLYMPICS IN 1989. HE PLAYED INDOOR AND OUTDOOR SOCCER PROFESSIONALLY FROM 1982-1994 IN THE ASL, AISA, MISL, CISL AND NPSL. HE WAS THE U.S NATIONAL INDOOR TEAM CAPTAIN FROM 1986-1996, AND PLAYED ON THE TEAM ACHIEVING THE HIGHEST TOURNAMENT FINISH EVER BY A U.S. MEN'S NATIONAL TEAM AT FIFA'S INDOOR WORLD CHAMPIONSHIPS - CAPTURING A SILVER MEDAL IN 1992 AND THE BRONZE MEDAL IN 1989.

BORN SEPTEMBER 22, 1959, IN KEY WEST, FLA., JIM CURRENTLY RESIDES IN ANNAPOLIS, MD. WITH HIS WIFE CARIN AND THREE CHILDREN. CARIN, CURRENTLY THE HEAD COACH AT THE U.S. NAVAL ACADEMY IN ANNAPOLIS, WAS A MEMBER OF THE FIRST U.S. WOMEN'S WORLD CUP CHAMPIONSHIP TEAM AND CUP MVP IN 1991 AND WAS A MEMBER OF THE 1996 GOLD MEDAL WINNING OLYMPIC SOCCER TEAM.





CLYDE WATSON

ASSISTANT COACH

CLYDE WATSON WAS HIRED AS AN ASSISTANT COACH FOR THE WASHINGTON FREEDOM IN 2001 AND WAS PART OF THE COACHING STAFF THAT LED THE FREEDOM TO THE 2003 WUSA CHAMPIONSHIP AND 2007 W-LEAGUE CHAMPIONSHIP.

HAVING COACHED IN THE WASHINGTON, D.C. AREA FOR OVER 20 YEARS, CLYDE IS A FIXTURE IN THE LOCAL SOCCER COMMUNITY. IN 1998, CLYDE WAS SELECTED AS THE VIRGINIA YOUTH SOCCER ASSOCIATION (VYSA) BOYS COACH OF THE YEAR AND WAS THE DIRECTOR OF COACHING AT THE TEAM AMERICA SOCCER CLUB AND GSC TEAM AMERICA PREMIER PROGRAM.

A MEMBER OF THE GUYANA MEN'S NATIONAL TEAM FOR 10 YEARS, CLYDE HAS PLAYED AND COACHED IN OVER 20 COUNTRIES. HE IS A GRADUATE OF CLEMSON UNIVERSITY, WHERE HE WAS CAPTAIN OF THEIR NATIONALLY RANKED SOCCER TEAM AND HELPED LEAD THE TIGERS TO THE NCAA FINALS.

US YOUTH SOCCER®

The Game for All Kids!®

800.4.SOCCER USYOUTHSOCCER.ORG

NICCI WRIGHT

GOALKEEPER COACH

NICCI WRIGHT WAS NAMED AN ASSISTANT COACH FOR THE WASHINGTON FREEDOM IN SEPTEMBER 2006. A FORMER PLAYER FOR THE FREEDOM, WRIGHT SERVED AS AN ASSISTANT COACH AT UMBC IN 2007 BEFORE JOINING THE FREEDOM COACHING STAFF FULL TIME. NICCI WILL WORK WITH THE GOALKEEPERS.



NICCI HOLDS AN NSCAA NATIONAL DIPLOMA AND CURRENTLY COACHES IN BOTH THE FREESTATE SOCCER ALLIANCE AND BALTIMORE BAYS CLUB SYSTEMS. NICCI WAS AN MSYSA GIRL'S ODP COACH FOR FOUR YEARS, LEADING HER '90 GIRLS TEAM TO A REGION I CHAMPIONSHIP.

AS A PLAYER, NICCI STARTED 38 INTERNATIONAL GAMES AS A GOALKEEPER FOR THE CANADIAN NATIONAL TEAM FROM 1996-2003. SHE RECORDED 11 SHUTOUTS, THE THIRD-MOST IN CANADIAN WOMEN'S SOCCER HISTORY, AND SHE IS THE ONLY CANADIAN GOALKEEPER TO WIN A GAME AGAINST THE FULL U.S. WOMEN'S NATIONAL TEAM.

NICCI JOINED THE FREEDOM IN 2003 AND WAS A MEMBER OF THE WUSA FOUNDERS CUP CHAMPIONSHIP TEAM. FROM 2003-2006, NICCI WAS ONE OF ONLY THREE INTERNATIONAL GOALKEEPERS TO PLAY IN THE WUSA, AND ONE OF ONLY 32 INTERNATIONAL PLAYERS TO PLAY IN THE LEAGUE. FROM 2003-2006 SHE PLAYED IN MORE THAN 45 LEAGUE, EXHIBITION AND INTERNATIONAL GAMES FOR THE FREEDOM, SERVING AS A CAPTAIN IN 2006.

IN 2002, NICCI PLAYED IN THE SWEDISH WOMEN'S LEAGUE ELITE DAMALLSVENSKA, FOR ALVIK IK IN LULEA, SWEDEN, WHERE SHE WAS VOTED FOOTBALLER OF THE YEAR FOR NORTHERN SWEDEN.

IN 2000, NICCI COMPETED WITH THE WORLD ALL-STAR TEAM IN A MATCH AGAINST THE USWNT IN THE DISCOVERY HEALTH CHANNEL WOMEN'S SOCCER TOUR, PLAYING FOR FREEDOM HEAD COACH JIM GABARRA. IN 2001, SHE PLAYED FOR THE VANCOUVER WHITECAPS OF THE USL'S W-LEAGUE, RECORDING FIVE SHUTOUTS IN NINE GAMES AND LEADING THE TEAM TO THE NATIONAL FINAL.



MARYLAND SOCCERPLEX

ABOUT THE SOCCERPLEX



THE DREAM OF A HIGH QUALITY MULTI-FIELD SOCCER FACILITY IN SUBURBAN MARYLAND BEGAN IN 1988 WHEN A GROUP OF LOCAL SOCCER CLUBS SUCCESSFULLY ADVOCATED FOR THE FACILITY TO BE ADDED TO A PARK MASTER PLAN. AT THE TIME THERE WAS NO PUBLIC OR PRIVATE FUNDING FOR THE PROJECT.

THEN IN 1998 A GROUP OF SOCCER PARENTS LED BY MAUREEN AND JOHN HENDRICKS, THE FOUNDER OF DISCOVERY COMMUNICATIONS, TRIED AGAIN. THEY ESTABLISHED THE MARYLAND SOCCER FOUNDATION (MSF), A NON-PROFIT CORPORATION WHOSE MISSION WAS TO BUILD, MANAGE AND MAINTAIN THE 24-FIELD SOCCER COMPLEX. A PUBLIC-PRIVATE PARTNERSHIP WAS FORMED WITH THE MARYLAND NATIONAL-CAPITAL PARK AND PLANNING COMMISSION (MNCPPC) AND A LOCATION FOR THE COMPLEX WAS IDENTIFIED IN GERMANTOWN, MD.

IN OCTOBER 2000, THE MARYLAND SOCCERPLEX OPENED WITH 19 FULL SIZED IRRIGATED SOCCER FIELDS. EACH FIELD MEASURES 115 X 75 YARDS AND ONE SIDE OF EACH FIELD HAS A BERM, IDEAL FOR SPECTATOR SEATING. THE FIELDS ARE ORGANIZED IN CLUSTERS OF FOUR OR FIVE FIELDS WITH PARKING AND A COMFORT STATION FOR EACH CLUSTER.

ONE OF THE ATTRACTIONS OF THE COMPLEX IS THE CHAMPIONSHIP STADIUM. THE STADIUM SITS IN A NATURAL BOW WITH A PAVED LIT PLAZA SURROUNDING IT. THERE IS SEATING FOR 6,000 SPECTATORS WITH BROADCAST QUALITY MUSCO LIGHTING AND KWIK GOAL PRO PREMIER WORLD COMPETITION GOALS.

THE CHAMPIONSHIP STADIUM HAS HOSTED A U.S. OLYMPIC QUALIFIER, MLS OPEN CUP MATCHES, A CONCACAF CHAMPIONS LEAGUE MATCH, THE ACC MEN'S SOCCER CHAMPIONSHIPS, USL AND W-LEAGUE MATCHES, TRAINING SESSIONS FOR ARGENTINA'S BOCA JUNIORS AND THE NEW ZEALAND NATIONAL TEAM. IN ADDITION, THE U.S. YOUTH SOCCER NATIONAL CHAMPIONSHIPS WERE HELD AT THE MARYLAND SOCCERPLEX.

THE MARYLAND SOCCERPLEX WELCOMES MORE THAN 600,000 VISITORS A YEAR. ALTHOUGH THE MAJORITY OF VISITORS COME FROM THE LOCAL SOCCER CLUBS AND LEAGUES THAT PLAY MORE THAN 4,500 MATCHES AT THE COMPLEX, TEAMS FROM ALL OVER THE COUNTRY COME TO PARTICIPATE IN SOME OF THE MOST COMPETITIVE YOUTH SOCCER TOURNAMENTS IN THE COUNTRY. THE SOCCERPLEX BECAME THE HOME OF THE WASHINGTON FREEDOM IN 2009.

DIRECTIONS TO THE SOCCERPLEX

18031 CENTRAL PARK CIRCLE
BOYDS, MD 20841
(301) 528-1480
WWW.MDSOCCERPLEX.ORG

SOCCERPLEX FROM NORTHERN VIRGINIA AND POINTS SOUTH

TAKE I-495 (CAPITAL BELTWAY) WEST TO EXIT 35 (I-270 NORTH TOWARDS FREDERICK)
TAKE I-270 NORTH TO EXIT 15B (ROUTE 118 SOUTH) TOWARDS GERMANTOWN
CONTINUE ON ROUTE 118 FOR 2.8 MILES TO RICHTER FARM ROAD AND TURN RIGHT
TAKE RICHTER FARM ROAD 1 MILE TO SCHAEFFER ROAD (4-WAY STOP) AND TURN LEFT
THE PARK ENTRANCE IS 0.3 MILES ON THE RIGHT

SOCCERPLEX FROM PRINCE GEORGE'S COUNTY AND POINTS EAST

TAKE US 50 WEST TO EXIT 7B (I-495/I-95 NORTH TOWARDS BALTIMORE/SILVER SPRING)
TAKE I-495 TO EXIT 35 (I-270 NORTH TOWARDS FREDERICK)
TAKE I-270 NORTH TO EXIT 15B (ROUTE 118 SOUTH) TOWARDS GERMANTOWN
CONTINUE ON ROUTE 118 FOR 2.8 MILES TO RICHTER FARM ROAD AND TURN RIGHT
TAKE RICHTER FARM ROAD 1 MILE TO SCHAEFFER ROAD (4-WAY STOP) AND TURN LEFT
THE PARK ENTRANCE IS 0.3 MILES ON THE RIGHT

SOCCERPLEX FROM WESTERN MARYLAND

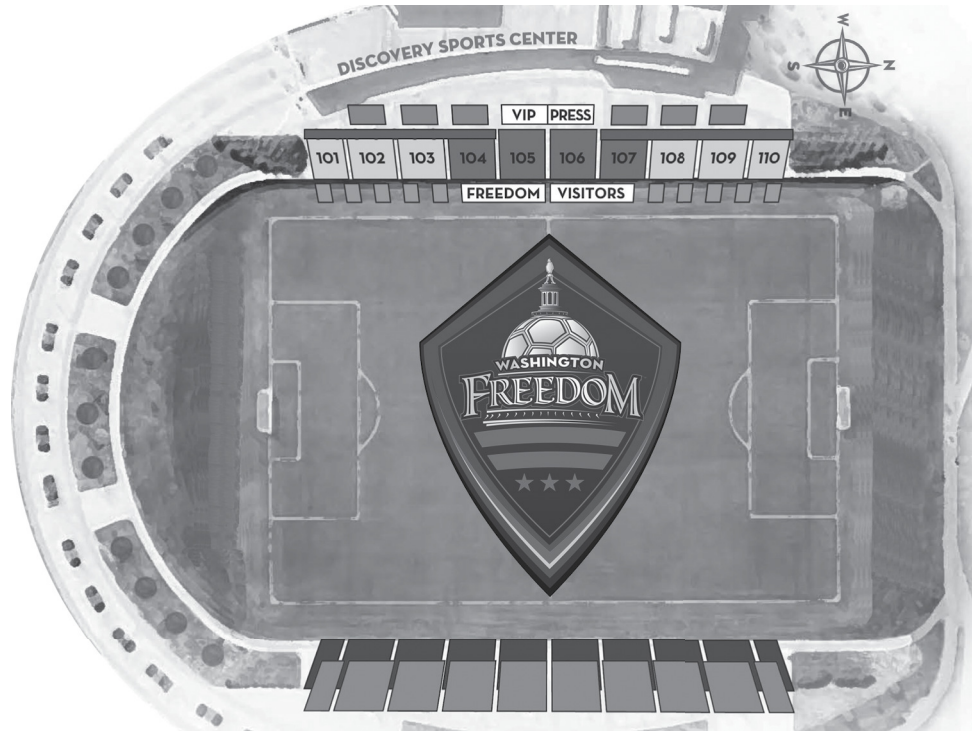
TAKE ROUTE I-70 EAST TOWARDS FREDERICK
FOLLOW I-70 TO THE EXIT FOR I-270 SOUTH
TAKE I-270 SOUTH TO EXIT 15B (ROUTE 118 SOUTH) TOWARDS GERMANTOWN
CONTINUE ON ROUTE 118 FOR 2.8 MILES TO RICHTER FARM ROAD AND TURN RIGHT
TAKE RICHTER FARM ROAD 1 MILE TO SCHAEFFER ROAD (4-WAY STOP) AND TURN LEFT
THE PARK ENTRANCE IS 0.3 MILES ON THE RIGHT

SOCCERPLEX FROM BALTIMORE AND POINTS NORTH

TAKE I-695 (BALTIMORE BELTWAY) TO EXIT FOR ROUTE I-70 WEST TOWARDS FREDERICK
FOLLOW I-70 TO THE EXIT FOR I-270 SOUTH TOWARDS WASHINGTON (APPROXIMATELY 35 MILES)
TAKE I-270 SOUTH TO EXIT 15B (ROUTE 118 SOUTH) TOWARDS GERMANTOWN
CONTINUE ON ROUTE 118 FOR 2.8 MILES TO RICHTER FARM ROAD AND TURN RIGHT
TAKE RICHTER FARM ROAD 1 MILE TO SCHAEFFER ROAD (4-WAY STOP) AND TURN LEFT
THE PARK ENTRANCE IS 0.3 MILES ON THE RIGHT

SEASON TICKET INFORMATION

MARYLAND SOCCERPLEX SEATING



	FULL SEASON	SOCCERPLEX PLAN	3 GAME PLEX PLAN
RESERVED ON-FIELD	\$950	\$665	N/A
RESERVED SEATBACK	\$400	\$280	N/A
RESERVED CENTER	\$300	\$210	\$90
RESERVED SIDES	\$250	\$175	\$65
UNRESERVED LOWER	\$200	\$140	\$65
UNRESERVED UPPER	\$150	\$105	\$50



PLAYERS



ROSTER BY NAME

<i>No.</i>	<i>NAME</i>	<i>Pos.</i>	<i>NATIONALITY</i>	<i>COLLEGE</i>
8	SONIA BOMPASTOR	M	FRANCE	-
15	KRISTIN DeDYCKER	D/M	USA	DENVER
17	LISA De VANNA	F	AUSTRALIA	-
7	PARRISSA EYOROKON	M/F	USA	PURDUE
3	JILL GILBEAU	D/M/F	USA	TEXAS
14	SARAH HUFFMAN	M	USA	VIRGINIA
11	EMILY JANS	D/M	USA	MARYLAND
24	CHRISTEN KARNISKI	D	USA	ILLINOIS
26	MADISON KELLER	D/M	USA	EAST CAROLINA
6	LORI LINDSEY	M	USA	VIRGINIA
5	JOANNA LOHMAN	D/M	USA	PENN STATE
9	ALLIE LONG	M	USA	NORTH CAROLINA
18	ERIN McLEOD	G	CANADA	PENN STATE
19	REBECCA MOROS	M/F	USA	DUKE
22	BECKY SAUERBRUNN	D	USA	VIRGINIA
10	HOMARE SAWA	M	JAPAN	-
1	BRIANA SCURRY	G	USA	MASSACHUSETTS
21	ALEX SINGER	D	USA	VIRGINIA
61	KATI JO SPISAK	G	USA	TEXAS A&M
20	ABBY WAMBACH	F	USA	FLORIDA
4	CAT WHITEHILL	D	USA	NORTH CAROLINA
25	CLAIRE ZIMMECK	F	USA	WILLIAM & MARY

ROSTER BY NUMBER

<i>No.</i>	<i>NAME</i>	<i>Pos.</i>	<i>PREVIOUS CLUB</i>
1	BRIANA SCURRY	G	ATLANTA BEAT (WUSA)
3	JILL GILBEAU	D/M/F	WASHINGTON FREEDOM (W-LEAGUE)
4	CAT WHITEHILL	D	NEW JERSEY WILDCATS (W-LEAGUE)
5	JOANNA LOHMAN	D/M	BALINGE (SWEDEN)
6	LORI LINDSEY	M	WASHINGTON FREEDOM (W-LEAGUE)
7	PARRISSA EYOROKON	M/F	-
8	SONIA BOMPASTOR	M	OLYMPIQUE LYONNAISE (FRANCE)
9	ALLIE LONG	M	-
10	HOMARE SAWA	M	NTV BELEZA (JAPAN)
11	EMILY JANS	D	WASHINGTON FREEDOM (W-LEAGUE)
14	SARAH HUFFMAN	M	ROA IL (NORWAY)
15	KRISTIN DeDYCKER	D/M	DENVER DIAMONDS (WPSL)
17	LISA De VANNA	F	AIK (SWEDEN)
18	ERIN McLEOD	G	VANCOUVER WHITECAPS (W-LEAGUE)
19	REBECCA MOROS	M/F	WASHINGTON FREEDOM (W-LEAGUE)
20	ABBY WAMBACH	F	WASHINGTON FREEDOM (WUSA)
21	ALEX SINGER	D	WASHINGTON FREEDOM (W-LEAGUE)
22	BECKY SAUERBRUNN	D	WASHINGTON FREEDOM (W-LEAGUE)
24	CHRISTEN KARNISKI	D	WASHINGTON FREEDOM (W-LEAGUE)
25	CLAIRE ZIMMECK	F	NORTHERN VIRGINIA MAJESTICS (W-LEAGUE)
26	MADISON KELLER	D/M	WASHINGTON FREEDOM (W-LEAGUE)
61	KATI JO SPISAK	G	WASHINGTON FREEDOM (W-LEAGUE)

SONIA BOMPASTOR

DEFENDER

BORN: 6.8.1980 IN BLOIS, FRANCE

HOMETOWN: MER, FRANCE

HEIGHT: 5'4"

HOW ACQUIRED: 2ND PICK (11TH OVERALL), WPS

INTERNATIONAL DRAFT

PREVIOUS CLUBS: TOURS ETUDIANT, LA ROCHE SUR YON, MONTPELLIER HERAULT, OLYMPIQUE LYONNAIS



8

OTHER PROFESSIONAL EXPERIENCE

- TWO-TIME FRENCH CHAMPIONSHIP WINNER WITH OLYMPIQUE LYONNAIS (2007-08)
- TWO-TIME FRENCH CHAMPIONSHIP WINNER WITH MONTPELLIER (2004-05)
- HONORED TWICE AS TOP PLAYER IN FRENCH CHAMPIONSHIP (2004 AND 2008)
- WON FRENCH CUP WITH MONTPELLIER IN 2006 AND OLYMPIQUE LYONNAIS IN 2008
- MEMBER OF OLYMPIQUE LYONNAIS CLUB THAT ADVANCED TO THE SEMIFINALS OF THE EUROPEAN CUP IN BOTH 2008 AND 2009
- MEMBER OF MONTPELLIER CLUB THAT ADVANCED TO EUROPEAN CUP IN 2005 AND 2006, ADVANCING TO THE SEMIFINALS IN 2006

INTERNATIONAL

- SCORED 10 GOALS IN 102 CAPS WITH FRENCH NATIONAL TEAM, MAKING DEBUT ON FEB. 26, 2000
- MEMBER OF 2003 FRENCH WOMEN'S WORLD CUP TEAM
- PLAYED IN TWO EUROPEAN CUPS WITH NATIONAL TEAM (2001 AND 2005)



KRISTIN DEDYCKER

MIDFIELDER/DEFENDER

BORN: 12.17.1980 IN HOUSTON, TEXAS

HOMETOWN: DENVER, COLO.

COLLEGE: DENVER

HEIGHT: 5'8"

HOW ACQUIRED: SIGNED AS FREE AGENT IN 2009

PREVIOUS CLUBS: ATLANTA BEAT (WUSA), DENVER
DIAMONDS (WPSL)

OTHER PROFESSIONAL EXPERIENCE

-MEMBER OF 2003 FOUNDERS CUP III RUNNER UP ATLANTA BEAT

COLLEGE

-THREE-TIME ALL SUNBELT CONFERENCE SELECTION (2000-02)

-THREE-TIME SUNBELT CONFERENCE ALL TOURNAMENT TEAM SELECTION (2000-02)

-NAMED MOST OUTSTANDING PLAYER FOR SUNBELT CONFERENCE TOURNAMENT IN 2001

-TWO-TIME NSCAA ALL AMERICAN SELECTION (2001-2002)

-TWO-TIME NSCAA ALL REGION TEAM SELECTION (2001-2002)

LISA DE VANNA

FORWARD

BORN: 11.14.1984 IN FREMANTLE, AUSTRALIA

HOMETOWN: PERTH, AUSTRALIA

HEIGHT: 5'2"

HOW ACQUIRED: 3RD PICK (18TH OVERALL), WPS

INTERNATIONAL DRAFT

PREVIOUS CLUBS: AIK (SWEDEN), PERTH GLORY (AUSTRALIA)



17

OTHER PROFESSIONAL EXPERIENCE

-TOP GOAL SCORER FOR AIK (SWEDEN) IN 2008

INTERNATIONAL

-SCORED 20 GOALS IN 60 CAPS WITH AUSTRALIAN NATIONAL TEAM

-MEMBER OF AUSTRALIA'S 2007 WOMEN'S WORLD CUP TEAM, SCORING FOUR GOALS

-NAMED TO FIFA WOMEN'S WORLD CUP ALL STAR TEAM IN 2007

-MEMBER OF AUSTRALIA'S NATIONAL TEAM AT 2004 OLYMPICS IN ATHENS



PARRISSA EYOROKON

MIDFIELDER/FORWARD

BORN: 9.15.1986 IN TOLEDO, OHIO

HOMETOWN: WEST CHESTER, OHIO

COLLEGE: PURDUE

HEIGHT: 5'5"

HOW ACQUIRED: 4TH PICK (23RD OVERALL), 2009 WPS
DRAFT

INTERNATIONAL

-MEMBER OF U23 U.S. NATIONAL TEAM THAT COMPETED IN THREE TEAM COMPETITION IN SPAIN IN 2009.

COLLEGE

-BIG TEN OFFENSIVE PLAYER OF THE YEAR IN 2007

-NSCAA FIRST TEAM ALL AMERICAN IN 2007

-TWO-TIME ALL BIG TEN FIRST TEAM SELECTION (2006, 2007)

-TWO-TIME NSCAA AND SOCCER BUZZ ALL GREAT LAKES REGION SELECTION (2006-07)

JILL GILBEAU

DEFENDER/MIDFIELDER

BORN: 5.21.1987 IN OAKLAND, CALIF.

HOMETOWN: SAN DIEGO

COLLEGE: TEXAS

HEIGHT: 5'5"

HOW ACQUIRED: 3RD PICK (22ND OVERALL), 2009 WPS

DRAFT

PREVIOUS CLUBS: WASHINGTON FREEDOM (W-LEAGUE)



3

COLLEGE

-FOUR YEAR STARTER FOR LONGHORNS SQUAD THAT MADE FOUR CONSECUTIVE NCAA TOURNAMENT APPEARANCES

-MEMBER OF BIG 12 CHAMPIONSHIP SQUADS IN 2006 AND 2007



SARAH HUFFMAN

MIDFIELDER

BORN: 3.5.1984 IN DANBURY, CONN.
 HOMETOWN: FLOWER MOUND, TEXAS
 COLLEGE: VIRGINIA
 HEIGHT: 5'4"
 HOW ACQUIRED: 1ST PICK (1ST OVERALL), OCTOBER
 GENERAL DRAFT
 PREVIOUS CLUBS: ROA IL (NORWAY), WASHINGTON
 FREEDOM (W-LEAGUE)

OTHER PROFESSIONAL EXPERIENCE

-SCORED 14 GOALS IN 13 GAMES FOR ROA IL SQUAD THAT CAPTURED THE 2008 NORWEGIAN CUP

INTERNATIONAL

-MEMBER OF U-16, U-17, U-19, U-21 AND U-23 U.S. NATIONAL TEAMS
 -U-19 SQUAD WON 2002 WORLD CHAMPIONSHIP
 -PLAYED ON U-21 NORDIC CUP SQUADS FROM 2004-07, INCLUDING THE CHAMPIONSHIP TEAMS IN 2004, 2005 AND 2007

W-LEAGUE EXPERIENCE

-MEMBER OF 2007 W-LEAGUE CHAMPION WASHINGTON FREEDOM

COLLEGE

-VIRGINIA STATE PLAYER OF THE YEAR IN 2004
 -TWO-TIME NSCAA ALL-AMERICAN (2004, 2005)
 -TWO-TIME SOCCER AMERICA MVP (2004, 2005)
 -TWO-TIME SOCCERBUZZ ALL-AMERICAN (2004, 2005)
 -ACC DEFENSIVE PLAYER OF THE YEAR IN 2004
 -ACC TOURNAMENT Co-MVP IN 2004
 -THREE-TIME FIRST TEAM ALL ACC SELECTION (2003-2005)
 -ACC ALL-TOURNAMENT TEAM SELECTION IN 2004
 -FINALIST FOR SOCCERBUZZ NATIONAL PLAYER OF THE YEAR IN 2004
 -MEMBER OF ACC TOURNAMENT CHAMPION CAVALIERS IN 2004
 -ACC ALL-FRESHMAN TEAM IN 2002

EMILY JANSS

DEFENDER/MIDFIELDER

BORN: 7.1.1978 IN TAMPA, FLA.

HOMETOWN: BRANDON, FLA.

COLLEGE: MARYLAND

HEIGHT: 5'3"

HOW ACQUIRED: 4TH PICK (28TH OVERALL), OCTOBER
GENERAL DRAFT

PREVIOUS CLUBS: WASHINGTON FREEDOM
(W-LEAGUE), FORTUNA HJORRING, NEW YORK POWER
(WUSA)



11

OTHER PROFESSIONAL EXPERIENCE

- DRAFTED BY THE NEW YORK POWER OF THE WUSA 100TH OVERALL (13TH ROUND) IN THE WUSA GLOBAL DRAFT
- SECOND LEADING SCORER FOR POWER IN 2002 WITH EIGHT GOALS
- 13 CAREER GOALS IN THREE WUSA SEASONS

INTERNATIONAL

- PLAYER AND COACH FOR FORTUNA HJORRING, A PROFESSIONAL TEAM IN DENMARK IN 2007 THAT FINISHED SECOND IN 3F LEAGUE AND WAS 3F CUP RUNNER-UP
- ASSISTANT COACH WITH TALENT CENTER AGE GROUPS OF CLUB (12-14 AND 15-17)

W-LEAGUE EXPERIENCE

- MEMBER OF 2007 W-LEAGUE CHAMPION WASHINGTON FREEDOM

COLLEGE

- NAMED TO THE 50TH ANNIVERSARY ALL ACC SOCCER TEAM IN 2002
- THREE-TIME ALL ACC SELECTION (1997-99)
- THREE-TIME SOCCER BUZZ ALL REGION SELECTION (1996-97, 1999)
- TWO-TIME ALL ACC TOURNAMENT TEAM SELECTION (1997, 1999)
- TWO-TIME NSCAA ALL MID-ATLANTIC REGION SELECTION (1997, 1999)
- WON TWO CONSECUTIVE SOCCER TIMES NATIONAL PLAYER OF THE WEEK AWARDS IN 1999
- SOCCER BUZZ FRESHMAN ALL AMERICAN IN 1996



CHRISTEN KARNISKI

DEFENDER

BORN: 5.18.1984 IN NEW HAVEN, CONN.
 HOMETOWN: IOWA CITY, IOWA
 COLLEGE: ILLINOIS
 HEIGHT: 5'5"
 HOW ACQUIRED: 10TH PICK (64TH OVERALL), 2009
 WPS DRAFT
 PREVIOUS CLUBS: WASHINGTON FREEDOM
 (W-LEAGUE), FC INDIANA (W-LEAGUE) BALINGE,
 DANMARKS IF

COLLEGE

- UNIVERSITY OF ILLINOIS MEDAL OF HONOR RECIPIENT AS TOP FEMALE STUDENT-ATHLETE OF THE YEAR FOR 2005-06 SCHOOL YEAR
- BIG TEN CO-DEFENSIVE PLAYER OF THE YEAR IN 2005
- TWO-TIME ALL BIG TEN SELECTION (2004-05)
- TWO-TIME NSCAA ALL GREAT LAKES TEAM SELECTION (2004-2005)
- TWO-TIME SOCCER BUZZ ALL AMERICAN (2004-05)
- NSCAA SECOND TEAM ALL AMERICAN IN 2005
- SOCCER TIMES THIRD TEAM ALL AMERICAN IN 2005
- SOCCER BUZZ ALL GREAT LAKES FIRST TEAM SELECTION IN 2005
- TWO-TIME NSCAA SCHOLAR ALL AMERICAN (2004-05)
- BIG TEN ALL FRESHMAN TEAM IN 2002

MADISON KELLER

DEFENDER/MIDFIELDER

BORN: 12.30.1987 IN ROCKVILLE, MD.
HOMETOWN: CLARKSBURG, MD.
COLLEGE: EAST CAROLINA
HEIGHT: 5'10"
HOW ACQUIRED: SIGNED AS FREE AGENT
PREVIOUS CLUBS: WASHINGTON FREEDOM (W-LEAGUE)



COLLEGE

- FOUR YEAR STARTER FOR THE PIRATES, HELPING THE TEAM WIN THE CONFERENCE USA CHAMPIONSHIP IN 2008
- CUSA ALL CONFERENCE FIRST TEAM SELECTION IN 2008
- CUSA ALL TOURNAMENT FIRST TEAM SELECTION IN 2008
- NSCAA SECOND TEAM ALL REGION SELECTION IN 2008
- SOCCER BUZZ THIRD TEAM ALL REGION SELECTION IN 2008
- NSCAA SCHOLAR ALL AMERICAN SECOND TEAM SELECTION IN 2008



LORI LINDSEY

MIDFIELDER

BORN: 3.19.1980 IN INDIANAPOLIS

HOMETOWN: INDIANAPOLIS

COLLEGE: VIRGINIA

HEIGHT: 5'5"

HOW ACQUIRED: 3RD PICK (17TH OVERALL), OCTOBER
GENERAL DRAFT

PREVIOUS CLUBS: WASHINGTON FREEDOM (WUSA,
W-LEAGUE)

OTHER PROFESSIONAL EXPERIENCE

- MEMBER OF 2003 FOUNDERS CUP III CHAMPION WASHINGTON FREEDOM
- FOURTH OVERALL PICK IN 2002 WUSA DRAFT BY SAN DIEGO SPIRIT

INTERNATIONAL

- 1 CAP WITH U.S. WOMEN'S NATIONAL TEAM
- MEMBER OF U16, U17 AND U21 U.S. WOMEN'S NATIONAL TEAMS

W-LEAGUE

- MEMBER OF 2007 W-LEAGUE CHAMPION WASHINGTON FREEDOM
- TWO-TIME ALL W-LEAGUE AND ALL-EASTERN CONFERENCE SELECTION (2007-08)

COLLEGE

- FIRST-EVER ACC PLAYER OF THE YEAR FROM THE UNIVERSITY OF VIRGINIA
- ONE OF ONLY TWO PLAYERS TO WIN CONSECUTIVE ACC PLAYER OF THE YEAR AWARDS (MIA HAMM IS THE OTHER)
- NSCAA SECOND TEAM ALL AMERICAN IN 2001

JOANNA LOHMAN

MIDFIELDER

BORN: 6.26.1982 IN TAKOMA PARK, MD.
 HOMETOWN: SILVER SPRING, MD.
 COLLEGE: PENN STATE
 HEIGHT: 5'5"
 HOW ACQUIRED: VIA TRADE WITH SAINT LOUIS
 ATHLETICA
 PREVIOUS CLUBS: BALINGE



5

OTHER PROFESSIONAL EXPERIENCE

- PLAYED IN WUSA FESTIVALS IN BOTH MINNEAPOLIS AND LOS ANGELES IN 2004
- MEMBER OF THE 2005 FREEDOM RESERVES

INTERNATIONAL

- 7 USWNT CAPS
- TRAINED WITH WNT DURING THE 2004 OLYMPIC RESIDENCY TRAINING CAMP
- MEMBER OF U21 USWNT FROM 2000-2005, CAPTAINING THE SQUAD FROM 2003-04
- HELPED LEAD U21 TEAM TO THREE NORDIC CUP CHAMPIONSHIPS, EARNING MVP HONORS IN 2002

COLLEGE

- SCORED 19 GOALS AND HAD SIX ASSISTS HER SENIOR SEASON AT PENN STATE, FINISHING CAREER NO. 5 IN ALL-TIME GOALS SCORED (41), NO. 2 IN ASSISTS (37), NO. 4 IN POINTS (114) AND FIRST WITH EIGHT GAME-WINNING GOALS
- NAMED PENNSYLVANIA'S NCAA WOMAN OF THE YEAR IN 2004
- TWO-TIME M.A.C. HERMANN TROPHY FINALIST (2002-03)
- TWO-TIME HONDA SPORTS AWARD FINALIST (2002-03)
- FINALIST FOR THE COLLEGIATE WOMEN'S SPORTS AWARD FOR WOMEN'S SOCCER IN 2003
- BIG TEN PLAYER OF THE YEAR IN 2003
- FIRST FOUR-TIME FIRST TEAM ALL BIG TEN SELECTION IN PENN STATE HISTORY
- THREE-TIME NSCAA ALL AMERICAN SELECTION (2001-03)
- THREE-TIME CoSIDA ACADEMIC ALL AMERICAN (2001-03)
- ONE OF THREE RECIPIENTS OF PENN STATE'S OUTSTANDING SENIOR ATHLETE AWARD IN 2003
- BIG TEN FRESHMAN OF THE YEAR IN 2000



ALLIE LONG

MIDFIELDER

BORN: 8.13.1987 IN HUNTINGTON, N.Y.

HOMETOWN: NORTHPORT, N.Y.

COLLEGE: NORTH CAROLINA

HEIGHT: 5'8"

HOW ACQUIRED: 1ST PICK (7TH OVERALL), 2009 WPS DRAFT

INTERNATIONAL

- MEMBER OF U-20 AND U-21 U.S. NATIONAL TEAMS
- MEMBER OF U-20 WOMEN'S WORLD CUP TEAM

COLLEGE

- MEMBER OF 2008 NCAA CHAMPION TAR HEELS
- ACC PLAYER OF THE WEEK IN 2008
- NAMED TO M.A.C. HERMANN TROPHY WATCH LIST IN 2007
- ACC PLAYER OF THE WEEK IN 2007
- TWO-TIME ALL BIG TEN SELECTION (2005-06)
- NSCAA ALL REGION SELECTION IN 2006
- NSCAA ALL FRESHMAN TEAM SELECTION IN 2005

ERIN MCLEOD

GOALKEEPER

BORN: 2.26.1983 IN ST. ALBERT, EDMONTON, ALBERTA

HOMETOWN: CALGARY, ALBERTA

COLLEGE: PENN STATE

HEIGHT: 5'9"

HOW ACQUIRED: POST INTERNATIONAL DRAFT

DISCOVERY PLAYER

PREVIOUS CLUBS: VANCOUVER WHITECAPS (W-LEAGUE)



18

INTERNATIONAL

-51 CANADIAN WOMEN'S NATIONAL TEAM CAPS

-STARTING GOALKEEPER FOR 2007 CWNT WOMEN'S WORLD CUP SQUAD

-STARTING GOALKEEPER FOR 2008 CWNT OLYMPIC SQUAD IN BEIJING, CHINA

-STARTING GOALKEEPER FOR CWNT SQUAD THAT FINISHED SECOND IN THE U19 WOMEN'S WORLD CUP IN 2002

W-LEAGUE EXPERIENCE

- MEMBER OF W-LEAGUE CHAMPION WHITECAPS IN 2004 AND 2006

COLLEGE

-MEMBER OF PENN STATE SQUAD THAT REACHED THE NCAA FINAL FOUR IN 2005



19

REBECCA MOROS

MIDFIELDER

BORN: 5.6.1985 IN NEW YORK

HOMETOWN: LARCHMONT, N.Y.

COLLEGE: DUKE

HEIGHT: 5'5"

HOW ACQUIRED: 6TH PICK (36TH OVERALL), 2009 WPS DRAFT

PREVIOUS CLUBS: WASHINGTON FREEDOM (W-LEAGUE)

INTERNATIONAL

- MEMBER OF U21 WNT AND NORDIC CUP TEAMS IN 2006
- MEMBER OF U19 WNT PLAYER POOL IN 2004

W-LEAGUE EXPERIENCE

- MEMBER OF 2007 W-LEAGUE CHAMPION WASHINGTON FREEDOM

COLLEGE

- FOUR-YEAR STARTER AT DUKE, TIED FOR FIFTH IN CAREER ASSISTS FOR BLUE DEVILS
- NSCAA ALL AMERICAN THIRD TEAM SELECTION IN 2006
- THREE-TIME ALL ACC SELECTION (2004-06)
- THREE-TIME SOCCER BUZZ ALL REGION SELECTION (2004-06)
- TWO-TIME NSCAA ALL REGION SELECTION (2004-05)
- LED DUKE WITH 11 ASSISTS IN 2004, INCLUDING SINGLE GAME RECORD OF FOUR ASSISTS

BECKY SAUERBRUNN

DEFENDER

BORN: 6.6.1985 IN ST. LOUIS

HOMETOWN: ST. LOUIS

COLLEGE: VIRGINIA

HEIGHT: 5'7"

HOW ACQUIRED: 2ND PICK (3RD OVERALL), OCTOBER
GENERAL DRAFT

PREVIOUS CLUBS: WASHINGTON FREEDOM (W-LEAGUE),
RICHMOND KICKERS DESTINY (W-LEAGUE), BOSTON
RENEGADES (W-LEAGUE)



22

INTERNATIONAL

-2 WNT CAPS

-RECEIVED FIRST TWO WNT CAPS AT THE FOUR NATIONS TOURNAMENT IN CHINA IN JANUARY 2008

-CO-CAPTAIN OF NORDIC CUP CHAMPION U23 WNT IN 2008

-MEMBER OF U23 NORDIC CUP CHAMPION WNT IN 2007

-CO-CAPTAIN OF U19 WNT THAT FINISHED THIRD AT THE 2004 WORLD CHAMPIONSHIPS IN THAILAND

-MEMBER OF U16 AND U17 WNT (2000-2002)

COLLEGE

-FOUR YEAR STARTER FOR VIRGINIA CAVALIERS (2003, 2005-2007)

-THREE-TIME NSCAA ALL-AMERICAN (2003, 2006-2007)

-NSCAA SCHOLAR ATHLETE OF THE YEAR IN 2007

-ACC DEFENSIVE PLAYER OF THE YEAR IN 2007

-ACC FRESHMAN OF THE YEAR IN 2003



HOMARE SAWA

MIDFIELDER

BORN: 9.6.1978 IN TOKYO, JAPAN

HOMETOWN: TOKYO, JAPAN

HEIGHT: 5'4"

HOW ACQUIRED: 1ST PICK (6TH OVERALL), WPS
INTERNATIONAL DRAFT

PREVIOUS CLUBS: ATLANTA BEAT (WUSA), NTV
BELIZA (AFC)

OTHER PROFESSIONAL EXPERIENCE

- TWO-TIME ASIAN FOOTBALL CONFEDERATION PLAYER OF THE YEAR (2004, 2008)
- MEMBER OF THE BEAT IN WUSA, HELPED LEAD TEAM TO TWO FOUNDERS CUP APPEARANCES IN THREE SEASONS AND SCORED THE FIRST GOAL IN FRANCHISE HISTORY

INTERNATIONAL

- HAS 65 GOALS IN 130 CAPS WITH JAPAN NATIONAL TEAM, SCORING FIRST GOAL IN DEBUT WITH TEAM AT AGE 15
- MEMBER OF JAPAN'S OLYMPIC TEAMS IN 2004 AND 2008
- MEMBER OF JAPAN'S WOMEN'S WORLD CUP TEAMS IN 2003 AND 2007

BRIANA SCURRY

GOALKEEPER

BORN: 9.7.1971 IN DAYTON, MINN.
 HOMETOWN: DAYTON, MINN.
 COLLEGE: MASSACHUSETTS
 HEIGHT: 5'8"
 HOW ACQUIRED: 5TH PICK (35TH OVERALL) 2009 WPS
 DRAFT
 PREVIOUS CLUB: ATLANTA BEAT (WUSA)



OTHER PROFESSIONAL EXPERIENCE

- ONE OF THREE FOUNDING PLAYERS OF THE BEAT IN WUSA, HELPED LEAD TEAM TO TWO FOUNDERS CUP APPEARANCES IN THREE SEASONS
- WON WUSA GOALKEEPER OF THE YEAR AWARD IN 2003
- LED WUSA IN GOALS AGAINST AVERAGE IN 2003 (0.95), THE ONLY GOALKEEPER WITH AN AVERAGE BELOW 1.0, SHUTOUTS (7) AND SAVE PERCENTAGE (79.5)
- THREE-TIME ALL-WUSA SELECTION (2001-03)
- NAMED A STARTER IN WUSA ALL STAR GAME IN 2003
- SELECTED FOR THE WUSA ALL STAR GAME IN 2002

INTERNATIONAL

- STARTER FOR THE U.S. WNT FROM 1994-99 AND AT THE 2003 WOMEN'S WORLD CUP, SHE IS THE MOST CAPPED GOALKEEPER IN USWNT HISTORY WITH 173 CAPS
- MEMBER OF 1999 WOMEN'S WORLD CUP CHAMPION U.S. SQUAD, PLAYING EVERY MINUTE OF THE TOURNAMENT AND ALLOWING ONLY 3 GOALS
- WOMEN'S WORLD CUP ALL STAR TEAM SELECTION IN 1999
- MEMBER OF 1996 AND 2004 GOLD MEDAL WINNING USA SQUADS AT OLYMPIC GAMES IN ATHENS, GREECE, AND ATLANTA, GA., RESPECTIVELY. PLAYED EVERY MINUTE OF BOTH TOURNAMENTS
- MEMBER OF THIRD PLACE USA SQUADS AT THE 1995, 2003 AND 2007 WOMEN'S WORLD CUP
- HAD STREAK OF 35 CONSECUTIVE MATCHES PLAYED WITHOUT A LOSS (31-0-4) FROM 1999-2003
- WON 100TH GAME IN GOAL FOR U.S. IN 2003

COLLEGE

- WON TWO NATIONAL GOALKEEPER AWARDS AS A SENIOR IN 1993
- NSCAA ALL AMERICAN SELECTION (2003)
- NSCAA ALL REGION SELECTION (2003)
- HELPED LEAD UMASS TO THE NCAA FINAL FOUR IN 1993
- AMASSED 37 SHUTOUTS, 65 CAREER STARTS AND A 48-13-4 RECORD FOR UMASS
- RECORDED 15 SHUTOUTS AND A 0.48 GOALS AGAINST AVERAGE IN 1993, THIRD BEST IN THE NATION
- RECORDED 7 SHUTOUTS IN 13 GAMES IN 1992 WHILE ALSO STARTING 3 GAMES AT FORWARD
- RECORDED 12 SHUTOUTS IN 19 GAMES IN 1991



ALEX SINGER

DEFENDER

BORN: 11.18.87 IN MANHATTAN, N.Y.

HOMETOWN: RYE, N.Y.

COLLEGE: VIRGINIA

HEIGHT: 5'9"

HOW ACQUIRED: 2ND PICK (8TH OVERALL), 2009
WPS DRAFT

PREVIOUS CLUBS: WASHINGTON FREEDOM
(W-LEAGUE), LONG ISLAND FURY (WPSL)

W-LEAGUE EXPERIENCE

-MEMBER OF 2007 W-LEAGUE CHAMPION WASHINGTON FREEDOM

WPSL EXPERIENCE

-MEMBER OF 2006 WPSL CHAMPION LONG ISLAND FURY

COLLEGE

-FOUR YEAR STARTER FOR CAVALIERS

-ALL ACC SECOND TEAM SELECTION IN 2008

-PART OF DEFENSIVE UNIT THAT LED THE NATION IN GOALS AGAINST AVERAGE (0.40)
AND SET A SCHOOL RECORD WITH 15 SHUTOUTS IN 2006

KATI JO SPISAK

GOALKEEPER

BORN: 11.22.1983 IN ST. LOUIS

HOMETOWN: ST. LOUIS

COLLEGE: TEXAS A&M

HEIGHT: 6'2"

HOW ACQUIRED: 8TH PICK (50TH OVERALL), 2009 WPS

DRAFT

PREVIOUS CLUBS: WASHINGTON FREEDOM (W-LEAGUE)



INTERNATIONAL EXPERIENCE

-MEMBER OF U21 WNT NORDIC CUP CHAMPION TEAMS FROM 2004-06

W-LEAGUE EXPERIENCE

-MEMBER OF 2007 W-LEAGUE CHAMPION WASHINGTON FREEDOM

-ALL TOURNAMENT TEAM SELECTION IN 2007

COLLEGE

-FOUR YEAR STARTER FOR AGGIES, NAMED AS A CAPTAIN IN 2004 AND 2005

-HELPED TEAM TO THREE ELITE EIGHT AND ONE SWEET 16 NCAA TOURNAMENT APPEARANCES

-NAMED TO M.A.C. HERMANN TROPHY WATCH LIST IN 2004 AND 2005

-FOUR-TIME NSCAA ALL REGION SELECTION (2002-05)

-THREE-TIME ALL BIG 12 FIRST TEAM SELECTION (2002-03, 2005)

-THREE-TIME SOCCER BUZZ ALL REGION SELECTION (2002-04)

-BIG 12 TOURNAMENT DEFENSIVE MVP AND ALL TOURNAMENT SELECTION IN 2004

-TWO-TIME SOCCER BUZZ ALL AMERICAN (2002-03)

-NSCAA ALL AMERICAN SELECTION IN 2003

-SOCCER AMERICA MVP TEAM SELECTION IN 2003

-SOCCERTIMES.COM ALL AMERICAN SELECTION IN 2003

-SOCCER BUZZ FRESHMAN ALL AMERICAN IN 2002

-BIG 12 ALL NEWCOMER TEAM SELECTION IN 2002



ABBY WAMBACH

FORWARD

BORN: 6.2.1980 IN ROCHESTER, N.Y.
 HOMETOWN: ROCHESTER, N.Y.
 COLLEGE: FLORIDA
 HEIGHT: 5'10"
 HOW ACQUIRED: WOMEN'S NATIONAL TEAM
 ALLOCATION
 PREVIOUS CLUBS: WASHINGTON FREEDOM (WUSA)

OTHER PROFESSIONAL EXPERIENCE

- MEMBER OF 2003 FOUNDERS CUP III CHAMPION WASHINGTON FREEDOM, SCORING BOTH GOALS, INCLUDING THE GAME-WINNER IN SUDDEN DEATH OVERTIME
- MVP OF FOUNDERS CUP III IN 2003
- TIED FOR LEAGUE LEAD IN SCORING (33 POINTS) IN 2003
- TWO-TIME ALL-WUSA SELECTION (2002-03)
- NAMED A STARTER IN WUSA ALL STAR GAMES IN 2002 AND 2003, WINNING MVP OF THE GAME AS A ROOKIE IN 2002
- SECOND OVERALL PICK IN 2002 DRAFT
- NAMED WUSA ROOKIE OF THE YEAR IN 2002

INTERNATIONAL

- SCORED 99 GOALS IN 1XX CAPS FOR THE U.S. WNT
- MEMBER OF 2004 GOLD MEDAL WINNING USA SQUAD AT OLYMPIC GAMES IN ATHENS, GREECE, SCORING THE GAME-WINNER AGAINST BRAZIL IN OVERTIME OF THE GOLD MEDAL MATCH
- MEMBER OF THIRD PLACE USA SQUADS AT THE 2003 AND 2007 WOMEN'S WORLD CUP
- FINISHED FOURTH IN VOTING FOR FIFA WOMEN'S WORLD PLAYER OF THE YEAR (2004-06)
- TWO-TIME U.S. SOCCER FEMALE ATHLETE OF THE YEAR (2003-04)
- FIRST U.S. PLAYER TO SCORE FOUR GOALS IN AN OLYMPIC TOURNAMENT (2004 IN ATHENS)
- ONE OF ONLY FIVE PLAYERS IN U.S. HISTORY TO SCORE MORE THAN 20 GOALS IN A CALENDAR YEAR, SCORING 31 GOALS IN 2004

COLLEGE

- FOUR-YEAR STARTER FOR THE GATORS
- MEMBER OF NCAA CHAMPION GATORS IN 1998
- TOTALED 31 GOALS AND 13 ASSISTS TO HELP FLORIDA TO THE NCAA FINAL FOUR IN 2001
- TWO-TIME SEC PLAYER OF THE YEAR (2000-01), THE FIRST PLAYER IN SEC HISTORY TO WIN THE AWARD IN CONSECUTIVE SEASONS
- FOUR-TIME ALL SEC FIRST TEAM SELECTION (1998-2001)
- FLORIDA'S CAREER LEADER IN GOALS (96), ASSISTS (49), POINTS (241), GAME-WINNING GOALS (24) AND HAT TRICKS (10)
- LED NCAA DIVISION IN POINTS PER GAME (3.26) AND GOALS PER GAME (1.34) AND FINISHED SIXTH ALL-TIME IN NCAA HISTORY IN GOALS AND POINTS
- SET A FLORIDA RECORD WITH AT LEAST ONE GOAL IN 10 STRAIGHT MATCHES
- TWO-TIME M.A.C. HERMANN TROPHY FINALIST (2000-01)
- NSCAA FIRST TEAM ALL AMERICAN SELECTION IN 1999
- SET A FLORIDA RECORD FOR ASSISTS IN A SEASON (16) IN 1999

CAT WHITEHILL

DEFENDER

BORN: 2.10.1982 IN RICHMOND, VA.
 HOMETOWN: BIRMINGHAM, ALA./DURHAM, N.C.
 COLLEGE: NORTH CAROLINA
 HEIGHT: 5'7"
 HOW ACQUIRED: U.S. WOMEN'S NATIONAL TEAM
 ALLOCATION
 PREVIOUS CLUBS: NEW JERSEY WILDCATS (W-LEAGUE)



INTERNATIONAL

- 129 WNT CAPS, 11 GOALS
- MEMBER OF 2004 GOLD MEDAL WINNING USA SQUAD AT OLYMPIC GAMES IN ATHENS, GREECE
- MEMBER OF THIRD PLACE USA SQUADS AT THE 2003 AND 2007 WOMEN'S WORLD CUP
- ONLY DEFENDER TO SCORE TWO GOALS IN A WORLD CUP GAME (2003 VS. NORTH KOREA)
- MOST ASSISTS IN A YEAR BY A DEFENDER (2007)
- US SOCCER YOUNG ATHLETE OF THE YEAR IN 2003

W-LEAGUE EXPERIENCE

- MEMBER OF 2005 W-LEAGUE CHAMPION NEW JERSEY WILDCATS
- W-LEAGUE DEFENDER OF THE YEAR IN 2005

COLLEGE

- MEMBER OF 2000 AND 2003 NCAA CHAMPION TAR HEELS SQUADS
- M.A.C. HERMANN AWARD WINNER IN 2003
- HONDA SPORTS AWARD WINNER IN 2004
- TWO-TIME NCAA TOURNAMENT DEFENSIVE MVP (2000, 2003)
- FOUR-TIME NSCAA ALL-AMERICAN (2000-2003)
- THREE-TIME ACC ALL-AMERICAN
- MEMBER OF FOUR ACC CHAMPIONSHIP TAR HEELS SQUADS



CLAIRE ZIMMECK

FORWARD

BORN: 12.30.1986 IN OCEANSIDE, CALIF.

HOMETOWN: FAIRFAX, VA.

COLLEGE: WILLIAM & MARY

HEIGHT: 5'7"

HOW ACQUIRED: 9TH PICK (63RD OVERALL), 2009 WPS DRAFT

PREVIOUS CLUBS: RICHMOND STRIKERS (W-LEAGUE) AND NORTHERN VIRGINIA MAJESTICS (W-LEAGUE)

COLLEGE

- 57 CAREER GOALS, INCLUDING 25 GAME WINNERS, FOR THE TRIBE, RANKING HER FIRST IN SCHOOL HISTORY IN CAREER GAME WINNERS, NO. 3 IN CAREER GOALS, NO. 5 IN CAREER POINTS
- TWO-TIME M.A.C. HERMANN TROPHY SEMIFINALIST (2007-08)
- TWO-TIME CAA PLAYER OF THE YEAR (2006-07)
- TWO-TIME NSCAA ALL AMERICAN SELECTION (2007-08)
- THREE-TIME SOCCER BUZZ ALL AMERICAN SELECTION (2006-2008)
- THREE-TIME NSCAA ALL REGION SELECTION (2006-08)
- FOUR-TIME SOCCER BUZZ ALL REGION SELECTION (2005-08)
- FOUR-TIME ALL CAA SELECTION (2005-08)
- VIRGINIA SID PLAYER OF THE YEAR IN 2006
- FOUR-TIME VIRGINIA SID ALL STATE TEAM SELECTION (2005-08)

GLORY

HATCHED IN CANADA ON JAN. 15, 2001, GLORY IMMEDIATELY MIGRATED TO THE WASHINGTON, D.C. AREA AND WAS ADOPTED BY THE WASHINGTON FREEDOM IN FEBRUARY 2001. EIGHT YEARS LATER, GLORY STILL ROAMS THE WASHINGTON FREEDOM SIDELINES EXCITING FANS OF ALL AGES AND ENCOURAGING THEM TO CHEER FOR THE WPS TEAM THAT CALLS THE NATION'S CAPITOL HOME.

GLORY HAS A WHITE TEDDY BEAR COLORED HEAD, A WHITE FOX COLORED PONYTAIL AND A BROWN KODIAK COLORED BODY AND STANDS ABOUT 9' TALL. GLORY IS ONE OF THE FOUR MEMBERS OF THE FREEDOM THAT WAS WITH THE TEAM WHEN IT WON THE WUSA FOUNDERS CUP III CHAMPIONSHIP IN 2003 AND THE W-LEAGUE NORTH AMERICAN CHAMPIONSHIP IN 2007 (JIM GABARRA, CLYDE WATSON AND LORI LINDSEY ARE THE OTHERS).



**1750 Teams, 12 Regional Tournaments, 280 Regional Champions,
20 National Champions, Hundreds of College Coaches Scouting,
Next Group of id2 Players Identified**

For information on this and other events | usclubsoccer.org



What is the NSCAA?

The National Soccer Coaches Association of America helps coaches excel in their careers through a commitment to provide the best coaching education, Convention and member services and benefits to the soccer community.



With an extensive array of member benefits, the NSCAA provides member coaches an unmatched level of service.

Our full range of coaching education courses are tailored for any level, while our annual Convention is a one-stop source for cutting-edge soccer concepts. From the volunteer parent to those in the college and professional ranks, there's an NSCAA course that's right for you.

The NSCAA encourages excellence through a wide-ranging awards and recognition program, including the national rankings for college and high school play and Coach of the Year and All-America programs at the college, high school and youth levels.



For more information or to become a member, visit us online at www.NSCAA.com or call 800-458-0678.



National Soccer Coaches Association of America

800 Ann Ave. • Kansas City, Kansas 66101 • 800-458-0678 • info@nscaa.com

Coaches Teach Players • We Teach Coaches

Healthtrax[®] is my fitness partner.

I'm here because I demand the best in fitness. As soon as I arrived, I knew this was the right place for me.

Make it yours.

Official Training
Center of the
Washington Freedom

Enjoy one
free day
of fitness*



Celebrating Our 30th Anniversary

FREE TRAINER ASSISTANCE
Every Visit*

RESULTS GUARANTEED
or Your Money Back**

WELLNESS AFFILIATIONS
with Leading Hospitals



Healthtrax[®] Fitness & Wellness

at the **Suburban Wellness Center**

20500 Seneca Meadows Parkway, Germantown

240-686-4500

www.healthtrax.com

*Subject to Healthtrax guest pass policy and tour of the facility. Valid for first time guests over 21 and a local resident. Training programs vary by Center. **Based on the 30-day money-back guarantee policy.



OPPONENTS



BOSTON BREAKERS

400 BLUE HILL DRIVE, SUITE 302

WESTWOOD, MA 02090

MAIN: (781) 251-2100 | TOLL FREE: 1-877-HEY-BREAKERS (439-2732)

FAX: (781) 251-0611 | WWW.BOSTONBREAKERS.COM

JOE CUMMINGS - GENERAL MANAGER

JOE CUMMINGS HAS BEEN A PIONEER OF SOCCER IN THE UNITED STATES FOR MORE THAN 30 YEARS. HIS CAREER HAS ENCOMPASSED EXPERIENCES ON BOTH THE COACHING AND ADMINISTRATIVE SIDES, COVERING THE YOUTH, HIGH SCHOOL, COLLEGE AND PROFESSIONAL GAME. PRIOR TO BEING NAMED THE GENERAL MANAGER FOR THE BREAKERS, CUMMINGS SERVED AS THE CEO AND EXECUTIVE DIRECTOR OF THE NEW ENGLAND SOCCER SCHOOL AND AMESBURY SPORTS PARK.

FROM 2000-2003, CUMMINGS SERVED AS THE PRESIDENT AND GENERAL MANAGER OF THE WUSA'S BOSTON BREAKERS. DURING THAT TIME CUMMINGS WAS TWICE SELECTED EXECUTIVE OF THE YEAR, THE ONLY LEAGUE ADMINISTRATOR TO RECEIVE THE AWARD. SINCE THEN HE HAS ALSO WORKED AS TECHNICAL ADVISOR FOR THE NEW ENGLAND REVOLUTION AND VENUE MANAGER FOR GILLETTE STADIUM. HE WAS INDUCTED INTO THE NEW ENGLAND SOCCER HALL OF FAME IN 2000.

TONY DiCICCO - HEAD COACH

FORMER U.S. WOMEN'S NATIONAL TEAM HEAD COACH TONY DiCICCO IS ONE OF THE MOST RECOGNIZABLE NAMES IN WOMEN'S SOCCER. DiCICCO GUIDED THE USA TO THE 1996 OLYMPIC GOLD MEDAL AND THE HISTORIC 1999 WORLD CUP CHAMPIONSHIP, WHILE ACCUMULATING A RECORD OF 103-8-8 - THE MOST WINS EVER FOR A U.S. NATIONAL SOCCER TEAM HEAD COACH.

IN 1981, DiCICCO FOUNDED SOCCERPLUS GOALKEEPER SCHOOLS. HE CREATED THE FSASOCCERPLUS FOOTBALL CLUB IN 2003 AND SERVED AS COACH FOR THE SOCCERPLUS CT REDS OF THE WOMEN'S PREMIER SOCCER LEAGUE (WPSL).

DiCICCO SERVED AS THE WUSA'S COO IN 2001 AND ITS COMMISSIONER IN 2002 AND 2003 AND THE CHAIRMAN OF THE RE-LAUNCH COMMITTEE IN 2004. THIS PAST FALL HE LED THE USA TO THE FIFA U-20 WOMEN'S WORLD CUP TITLE.

HARVARD STADIUM

95 N. HARVARD ST.

ALLSTON, MA 02134

BUILT IN 1903, HARVARD STADIUM IS THE NATION'S OLDEST STADIUM, AND WAS A 25TH ANNIVERSARY GIFT FROM THE CLASS OF 1879. MARVELED FOR ITS GREEK STADIUM AND ROMAN CIRCUS ELEMENTS, HARVARD STADIUM IS RECOGNIZED AS A NATIONAL HISTORIC LANDMARK AND IS ABLE TO ACCOMMODATE 30,323 FANS. IN 2006, THE STADIUM WAS UPGRADED WITH THE ADDITION OF A NEW SURFACE, PERMANENT LIGHTING AND A REMOVABLE ALL-WEATHER BUBBLE WHICH ALLOWS FOR YEAR-ROUND USE OF THE FACILITY. THE BOSTON CANNONS PROFESSIONAL LACROSSE TEAM ALSO PLAYS THEIR HOME GAMES AT HARVARD STADIUM.

BOSTON BREAKERS



FEATURED PLAYERS

KRISTINE LILLY

POSITION: MIDFIELDER/FORWARD

HEIGHT: 5'4"

HOMETOWN: WILTON, CONN.

LAST CLUB: BOSTON BREAKERS (WUSA)

COUNTRY: USA

KRISTINE LILLY IS A TWO-TIME WORLD CUP AND OLYMPIC CHAMPION. SHE IS THE WORLD'S MOST CAPPED PLAYER (MAN OR WOMAN) WITH 342 CAPS OVER HER 21-YEAR CAREER WITH THE NATIONAL TEAM. SHE IS SECOND IN U.S. AND WORLD HISTORY IN BOTH GOALS (129) AND ASSISTS (98).

LILLY HAS BEEN NAMED THE U.S. SOCCER FEMALE ATHLETE OF THE YEAR THREE TIMES IN HER CAREER, AND FINISHED SECOND FOR THE 2006 FIFA WOMEN'S WORLD PLAYER OF THE YEAR AWARD.

AMY RODRIGUEZ

POSITION: FORWARD

HEIGHT: 5'4"

HOMETOWN: LAKE FOREST, CALIF.

LAST CLUB: LAGUNA HILLS ECLIPSE

COUNTRY: USA

AMY RODRIGUEZ WAS THE NO. 1 PICK IN THE 2009 WPS DRAFT. RODRIGUEZ WAS THE ONLY SENIOR COLLEGIATE PLAYER ON THE 2008 GOLD MEDAL-WINNING U.S. OLYMPIC SOCCER TEAM AT LAST SUMMER'S BEIJING GAMES. KNOWN AS "A-ROD" IN SOCCER CIRCLES, RODRIGUEZ ASSISTED ON CARLI LLOYD'S GAME-WINNING GOAL IN THE GOLD MEDAL MATCH AGAINST BRAZIL.

PRIOR TO THE OLYMPIC TRIUMPH, SHE WON AN NCAA TITLE IN 2007 WITH THE UNIVERSITY OF SOUTHERN CALIFORNIA, WHERE SHE EARNED ALL-PAC 10 AND ALL-AMERICAN HONORS. SHE WAS USC'S FIRST-EVER SOCCER MEDALIST.



BOSTON BREAKERS

KELLY SMITH

POSITION: FORWARD

HEIGHT: 5'6"

HOMETOWN: WATFORD, ENGLAND

LAST CLUB: ARSENAL LADIES

COUNTRY: ENGLAND

WIDELY REGARDED AS ONE OF THE TOP WOMEN'S SOCCER PLAYERS IN THE WORLD, KELLY SMITH IS A TWO-TIME FINALIST FOR THE FIFA WORLD PLAYER OF THE YEAR AWARD. SHE WAS NAMED TO THE FIFA WOMEN'S WORLD CUP ALL-TOURNAMENT TEAM IN 2007 AFTER NOTCHING FOUR GOALS IN FOUR MATCHES, AND WAS VOTED PLAYER OF THE TOURNAMENT AT THE 2007 FOUR NATIONS TOURNAMENT IN CHINA.

WITH THE ARSENAL LADIES, SMITH HELPED THE SQUAD TO THE "QUADRUPLE," IN 2007, WINNING THE ENGLISH WOMEN'S PREMIER LEAGUE, FA CUP, LEAGUE CUP, AND UEFA WOMEN'S CUP (EUROPE'S TOP CLUB COMPETITION). SHE HAS PLAYED WITH THE ENGLISH NATIONAL TEAM SINCE SHE WAS 16 YEARS OLD.

PR CONTACT INFORMATION

KEVIN HASSETT - COMMUNICATIONS MANAGER

781.320.3170 (O)

339.933.0020 (C)

EMAIL: KHASSETT@BOSTONBREAKERS.COM

CHICAGO RED STARS

7300 WEST 71ST STREET

BRIDGEVIEW, IL 60455

MAIN: (708) 496-9500 | TOLL FREE: 1-866-WPS-2009

FAX: (708) 496-9515 | WWW.CHICAGOREDSTARS.COM



MARCIA McDERMOTT - GENERAL MANAGER

MARCIA McDERMOTT IS THE FIRST GENERAL MANAGER OF THE CHICAGO RED STARS.

HER BACKGROUND AS AN ELITE PLAYER, COACH AND ADMINISTRATOR HAS MADE McDERMOTT ONE OF THE MOST RESPECTED LEADERS IN AMERICAN SOCCER. A SUCCESSFUL CAREER AS A PLAYER WITH THE LEGENDARY UNIVERSITY OF NORTH CAROLINA TEAMS OF THE LATE 1980S AND COACHING SUCCESS AT THE COLLEGIATE AND PROFESSIONAL LEVELS PROVIDE A STRONG FOUNDATION FOR HER NEW POSITION AS CHICAGO'S GENERAL MANAGER.

McDERMOTT LAUNCHED THE WOMEN'S SOCCER PROGRAM AT NORTHWESTERN IN 1994 AND LED THE WILDCATS TO A PAIR OF NCAA TOURNAMENT APPEARANCES. IN 2001 AND 2002 SHE COACHED THE WUSA'S CAROLINA COURAGE. IN 2002, SHE GUIDED THE TEAM TO THE REGULAR SEASON CHAMPIONSHIP AS WELL AS POST-SEASON (FOUNDERS CUP II) TITLE BEFORE MOVING INTO THE FRONT OFFICE AS THE TEAM'S ASSISTANT GENERAL MANAGER AND DIRECTOR OF TICKET SALES.

McDERMOTT ALSO IS VERY ACTIVE IN THE NSCAA, HAVING SERVED ON THE WOMEN'S COMMITTEE AND BOARD OF DIRECTORS PRIOR TO HER CURRENT POSITION AS A VICE PRESIDENT ON THE EXECUTIVE COMMITTEE OF THE NATIONAL SOCCER COACHES ASSOCIATION OF AMERICA AND WILL BE THE PRESIDENT OF THAT ORGANIZATION IN 2010. SHE HAS ALSO WORKED AS A SCOUT FOR THE U.S. WOMEN'S NATIONAL TEAM AND IS ON THE BOARD OF THE NON-PROFIT CHICAGO SCORES, WHICH HELPS URBAN CHILDREN BY USING WRITING, COMMUNITY SERVICE AND SOCCER AS TOOLS TO BETTER THEIR LIVES.

EMMA HAYES - HEAD COACH

EMMA HAYES WAS NAMED THE HEAD COACH AND DIRECTOR OF SOCCER OPERATIONS FOR THE CHICAGO RED STARS ON MAY 15, 2008.

SINCE 2006, HAYES HAS SERVED AS FIRST TEAM ASSISTANT COACH AND ACADEMY DIRECTOR AT THE FA'S WOMEN'S PREMIER LEAGUE'S TOP-RANKED ARSENAL LADIES FOOTBALL CLUB IN LONDON, ENGLAND. HAYES HELPED GUIDE THE LADY GUNNERS TO AN UNDEFEATED LEAGUE RECORD AND WON EVERY COMPETITION ENGLAND HAS TO OFFER.

PRIOR TO JOINING ARSENAL, HAYES SERVED AS HEAD WOMEN'S SOCCER COACH AT IONA COLLEGE IN NEW ROCHELLE, NY. HAYES' HONORS AT IONA INCLUDED THE 2004 METRO ATLANTIC ATHLETIC CONFERENCE (MAAC) COACH OF THE YEAR AND THE 2004-2005 MAAC CONFERENCE CHAMPIONSHIPS.

HAYES ALSO SERVED AS HEAD COACH DOMESTICALLY FROM 2001-2003 IN THE W-LEAGUE WITH THE LONG ISLAND LADY RIDERS. THE YOUNGEST FEMALE HEAD COACH IN W-LEAGUE HISTORY, HAYES WAS NAMED 2002 NATIONAL COACH OF THE YEAR.



CHICAGO RED STARS

TOYOTA PARK

7000 S. HARLEM AVE.
BRIDGEVIEW, IL 60455

YEAR BUILT: 2006

SEATING CAPACITY: 20,000

STADIUM OCCUPANTS: CHICAGO RED STARS (WPS), CHICAGO FIRE (MLS), CHICAGO MACHINE LACROSSE (MLL)

FEATURED PLAYERS

CRISTIANE

POSITION: FORWARD

HEIGHT: 5-6

HOMETOWN: OSASCO, SÃO PAULO, BRAZIL

LAST CLUB: CORINTHIANS

COUNTRY: BRAZIL

A SILVER MEDALIST AT BOTH THE 2004 & 2008 OLYMPICS, CRISTIANE WAS SELECTED BY THE CHICAGO RED STARS WITH THE FIFTH OVERALL PICK IN THE WPS INITIAL INTERNATIONAL DRAFT. THE BRAZILIAN NATIONAL HAS FINISHED THIRD IN VOTING FOR FIFA PLAYER OF THE YEAR EACH OF THE PAST TWO YEARS.

KNOWN FOR HER ABILITY TO PERFORM UNDER THE INTERNATIONAL SPOTLIGHT, CRISTIANE'S FIVE GOALS LED ALL SCORERS AT THE BEIJING OLYMPICS. SHE ALSO SCORED FIVE GOALS IN ATHENS TO TIE FOR THE SCORING LEAD AT THE 2004 GAMES AND ADDED FIVE MORE FOR BRAZIL AT THE 2007 FIFA WOMEN'S WORLD CUP.

CARLI LLOYD

POSITION: MIDFIELDER

HEIGHT: 5-8

HOMETOWN: DELRAN, N.J.

COUNTRY: USA

THE 2008 U.S. SOCCER FEMALE ATHLETE OF THE YEAR, CARLI LLOYD HELPED LEAD THE AMERICANS TO A GOLD MEDAL AT THE BEIJING OLYMPICS. LLOYD PLAYED EVERY MINUTE OF THE 2008 OLYMPICS AND SCORED THE ONLY GOAL IN THE GOLD MEDAL MATCH VICTORY OVER BRAZIL.

CHICAGO RED STARS



A FIXTURE IN THE U.S. MIDFIELD, LLOYD SCORED FOUR GOALS AT THE 2007 ALGARVE CUP, BECOMING THE TOURNAMENT'S TOP SCORER AND EARNING MVP HONORS. A NATIVE OF NEW JERSEY, LLOYD FINISHED HER COLLEGIATE CAREER AS RUTGERS UNIVERSITY'S ALL-TIME LEADER IN POINTS (117) AND GOALS (50).

LINDSAY TARPLEY

POSITION: FORWARD

HEIGHT: 5-6

HOMETOWN: KALAMAZOO, MICH.

LAST CLUB: NEW JERSEY WILDCATS

COUNTRY: USA

AN OLYMPIC GOLD MEDALIST, LINDSAY TARPLEY ENJOYED HER BEST YEAR WITH THE U.S. WOMEN'S NATIONAL TEAM IN 2008. WITH 12 GOALS SCORED ON THE YEAR, TARPLEY MOVED INTO THE TOP 15 ALL-TIME SCORERS IN U.S. HISTORY.

THE MICHIGAN NATIVE HAS CHAMPIONSHIP EXPERIENCE DOMESTICALLY AS WELL, HAVING LED THE W-LEAGUE NEW JERSEY WILDCATS TO A CHAMPIONSHIP IN 2005 AND WINNING A NCAA CHAMPIONSHIP AT THE UNIVERSITY OF NORTH CAROLINA IN 2003.

PR CONTACT INFORMATION

JIM HOUGHTON - DIRECTOR OF MARKETING & COMMUNICATIONS

(708) 496-9512 (O)

(508) 228-9206 (C)

EMAIL: JHOUGHTON@CHICAGOREDSTARS.COM

ROB COONS - MEDIA RELATIONS COORDINATOR

(309) 648-1973 (C)

EMAIL: RCOONS@CHICAGOREDSTARS.COM



FC GOLD PRIDE

BLUE COAT SYSTEMS
ATTN: BAWS, LLC
420 N. MARY AVENUE
SUNNYVALE, CA 94089

MAIN: (408) 541-3511 | WWW.FCGOLDPRIDE.COM

ILISA KESSLER - GENERAL MANAGER

BAY AREA NATIVE, ILISA KESSLER WAS APPOINTED AS THE GM OF FC GOLD PRIDE ON NOVEMBER 1, 2008. KESSLER BRINGS AN EXTENSIVE BODY OF WORK IN SOCCER TO THE PRIDE FRONT OFFICE HAVING SERVED AS THE DIRECTOR OF OPERATIONS FOR THE SAN JOSE CYBER RAYS OF THE WUSA FROM 2001-2003, AS WELL AS SERVING AS THE BAY AREA STAFF AND ACCREDITATION MANAGER FOR THE 1999 WOMEN'S WORLD CUP.

IN ADDITION TO SOCCER, KESSLER'S DIVERSE EXPERIENCE WITH HIGH PROFILE SPORTING EVENTS INCLUDES THE MODERN PENTATHLON WORLD CHAMPIONSHIPS AND THE SILICON VALLEY FOOTBALL CLASSIC. SHE HAS ALSO HAD HER HAND IN NUMEROUS SPORTING EVENTS FOR STANFORD UNIVERSITY ATHLETICS AND SPARTAN STADIUM. MOST RECENTLY, KESSLER WORKED AT SAN FRANCISCO'S, ABC7/KGO-TV, AS THE BUSINESS OPERATIONS MANAGER.

KESSLER GRADUATED FROM THE UNIVERSITY OF CALIFORNIA, SANTA CRUZ WITH A BA IN BOTH ECONOMICS AND THEATRE ARTS. ADDITIONALLY, SHE HOLDS A MASTERS IN SPORTS MANAGEMENT FROM THE UNIVERSITY OF SAN FRANCISCO (USF). KESSLER ALSO SERVES AS A PROFESSOR AT USF, WHERE SHE TEACHES EVENT OPERATIONS FOR THE SPORT MANAGEMENT GRADUATE PROGRAM.

ALBERTIN MONTOYA - HEAD COACH

ALBERTIN MONTOYA IS A DISTINGUISHED COACH, TRAINER AND EXCEPTIONAL PLAYER. FOR THE PAST TEN YEARS, MONTOYA HAS BEEN COACHING AND TRAINING PROFESSIONAL, COLLEGIATE AND YOUTH PLAYERS AND TEAMS IN THE BAY AREA.

MONTOYA HAS SERVED AS AN ASSISTANT COACH AT THE COLLEGIATE LEVEL FOR BOTH HIS ALMA MATER (2006-2007), SANTA CLARA UNIVERSITY AND MOST RECENTLY AT STANFORD WHERE HE HELPED THE CARDINAL TO A FINAL FOUR APPEARANCE IN THE 2009 NCAA COLLEGE CUP. IN 2003, MONTOYA SERVED AS THE ASSISTANT TRAINER OF THE SAN JOSE CYBER RAYS OF THE WUSA. IN ADDITION TO HIS WORK AT THE PROFESSIONAL AND COLLEGIATE LEVELS, HE FOUNDED MONTOYA SOCCER ACADEMY IN 1999, NOW PART OF FC GOLD PRIDE ACADEMY, AND SINCE THEN HAS BEEN LENDING HIS EXPERTISE IN TEAM AND PLAYER DEVELOPMENT AT THE YOUTH LEVEL. AS A TESTAMENT TO HIS SUCCESS, MONTOYA HAS HELPED THE MOUNTAIN VIEW LOS ALTOS GIRLS YOUTH SOCCER CLUBS BRING HOME SEVEN STATE CUP CHAMPIONSHIPS IN OVER THE PAST FIVE YEARS.

IN ADDITION TO COACHING, MONTOYA WAS ALSO A STANDOUT PLAYER, COMPETING ON THE U-17 AND U-21 U.S. YOUTH NATIONAL TEAMS AND THE U.S. OLYMPIC TEAM. HE PLAYED HIS FIRST TWO YEARS OF COLLEGIATE SOCCER AT NORTH CAROLINA STATE UNIVERSITY WHERE HE WAS A TWO-TIME ATLANTIC COAST CONFERENCE FIRST-TEAM SELECTION BEFORE TRANSFERRING TO SANTA CLARA UNIVERSITY WHERE HE WAS AN ALL WEST COAST CONFERENCE SELECTION AND FINALIST FOR THE MACC HERMAN TROPHY IN 1996. MONTOYA ALSO REACHED THE PROFESSIONAL RANKS AS A PLAYER. HE WAS A FIRST-ROUND DRAFT PICK OF THE SAN JOSE CLASH IN 1997.

FC GOLD PRIDE



IN ADDITION TO HIS RESPONSIBILITIES AS HEAD COACH, MONTOYA WILL ALSO SERVE AS THE FC GOLD PRIDE ACADEMY DIRECTOR OF COACHING.

BUCK SHAW STADIUM
SANTA CLARA UNIVERSITY
500 EL CAMINO REAL
SANTA CLARA, CA 95050

BUCK SHAW STADIUM IS A 10,300 SEAT SOCCER SPECIFIC STADIUM AT SANTA CLARA UNIVERSITY IN SANTA CLARA, CA. BUCK SHAW STADIUM OPENED ITS GATES ON SEPTEMBER 22, 1962 AND WAS ORIGINALLY A MULTI-SPORT FIELD, HOUSING THE SCU FOOTBALL, BASEBALL AND SOCCER TEAMS UNTIL 2005. IN 2007, THE STADIUM UNDERWENT A \$4 MILLION RENOVATION TO EXPAND SEATING FROM THE ORIGINAL 6,800 SEATS TO ITS CURRENT CAPACITY.

IN 1994, THE FACILITY SERVED AS THE PRACTICE SITE FOR THE BRAZILIAN NATIONAL TEAM DURING THE WORLD CUP COMPETITION. BRAZIL, THE EVENTUAL WORLD CUP CHAMPIONS, PRACTICED FROM MAY 26 THROUGH JULY 7 IN FRONT OF FULL STANDS.

THE STADIUM WAS NAMED FOR LAWRENCE T. "BUCK" SHAW, A FORMER FOOTBALL COACH OF THE SCU BRONCOS. BUCK SHAW STADIUM IS HOME TO SANTA CLARA UNIVERSITY'S MEN'S AND WOMEN'S SOCCER TEAMS AS WELL AS FC GOLD PRIDE OF WOMEN'S PROFESSIONAL SOCCER.

FEATURED PLAYERS

LESLIE OSBORNE
POSITION: MIDFIELD
HEIGHT: 5'8"
HOMETOWN: BROOKFIELD, WIS.
LAST CLUB: SACRAMENTO STORM
COUNTRY: USA

LESLIE OSBORNE HAS BEEN A MEMBER OF THE U.S. WOMEN'S NATIONAL TEAM SINCE 2003 AND HAS REPRESENTED THE U.S. IN INTERNATIONAL PLAY 59 TIMES. SHE WAS A MEMBER OF THE WORLD CUP TEAM THAT BROUGHT HOME A BRONZE MEDAL.

OSBORNE WAS A MEMBER OF THE 2001 SANTA CLARA BRONCOS NATIONAL CHAMPIONSHIP TEAM. SHE FINISHED HER CAREER AS A BRONCO WITH 44 GOALS AND 34 ASSISTS. THE THREE-TIME WEST COAST CONFERENCE DEFENDER OF THE YEAR AND THREE-TIME NSCAA FIRST-TEAM ALL-AMERICAN WAS A M.A.C. HERMANN TROPHY SEMIFINALIST HER SENIOR YEAR. OSBORNE WAS ALSO HONORED AS THE NCAA HONDA AWARD WINNER AS THE NATION'S TOP FEMALE ATHLETE IN SOCCER IN 2004.



FC GOLD PRIDE

ERIKO ARAKAWA

POSITION: FORWARD

HEIGHT: 5'5"

HOMETOWN: TOKYO, JAPAN

LAST CLUB: NTV BELZA

COUNTRY: JAPAN

SHE IS HIGHLY REGARDED AS ONE OF JAPAN'S BIGGEST GOAL SCORING THREATS. SHE HAS REPRESENTED JAPAN SINCE 2003 PLAYING IN THE FIFA WOMEN'S WORLD CUP IN 2003 AND 2007 AND IN THE OLYMPIC GAMES IN 2004 AND 2008.

FORMIGA

POSITION: MIDFIELD

HEIGHT: 5'3"

HOMETOWN: ÁGUAS DE LINDÓIA, SÃO PAULO, BRAZIL

LAST CLUB: BOTUCATU

COUNTRY: BRAZIL

FORMIGA IS A FIXTURE OF THE BRAZILIAN NATIONAL TEAM SINCE 1995. BRAZIL'S CAPTAIN HELPED BRING HOME A SILVER MEDAL AT THE 2008 AND 2004 OLYMPIC GAMES. SHE ALSO PARTICIPATED IN THE 1996 AND 2000 OLYMPIC GAMES. SHE WAS A MEMBER OF BRAZIL'S 1995, 1999, 2003 AND 2007 FIFA WORLD CUP TEAMS. WON THE 2003 PAN AMERICAN GOLD MEDAL, SCORING A GOAL IN THE FINAL MATCH AGAINST CANADA MAKING THE SCORE 2-1.

PR CONTACT INFORMATION

CRYSTAL FUKUMOTO - MANAGER, PUBLIC RELATIONS

408-541-3513 (O)

415-887-8804 (C)

E-MAIL: CFUKUMOTO@FCGOLDPRIDE.COM

LOS ANGELES SOL

714 WEST OLYMPIC BOULEVARD, SUITE 303
 LOS ANGELES, CA 90015
 MAIN: (877) 476-5849 | TOLL FREE: (877) 4-SOL-TIX
 FAX: 213-742-7280 | WWW.LOSANGELESSOL.COM



CHARLIE NAIMO - GENERAL MANAGER

CHARLIE NAIMO WAS NAMED GM OF THE LOS ANGELES SOL ON OCTOBER 3, 2008. NAIMO HAS BEEN COACHING WOMEN'S SOCCER SINCE 1998. SINCE THEN, CHARLIE HAS BEEN TWICE NAMED W-LEAGUE COACH OF THE YEAR, WHILE LEADING THE NEW JERSEY WILDCATS TO TWO REGULAR SEASON TITLES AND A W-LEAGUE CHAMPIONSHIP IN 2005.

IN 2008, CHARLIE WAS NAMED COACH FOR THE PALI BLUES OF THE USL'S W-LEAGUE (THE HIGHEST LEVEL OF WOMEN'S SOCCER IN THE U.S. PRIOR TO THE ADDITION OF THE WPS), WHICH WON THIS YEAR'S W-LEAGUE CHAMPIONSHIP.

OVER THE LAST FOUR SEASONS, NAIMO HAS AMASSED AN ASTOUNDING 53-3 REGULAR SEASON COACHING RECORD.

ABNER ROGERS - HEAD COACH

ABNER ROGERS WAS NAME LOS ANGELES SOL HEAD COACH ON SEPTEMBER 15, 2008.

A NATIONALLY RESPECTED COACH WITH EXTENSIVE EXPERIENCE AND A HISTORY OF SUCCESS IN THE WOMEN'S GAME, THE LONDON-BORN ROGERS HAS SERVED AS THE HEAD COACH OF THE UNITED STATES ADULT SOCCER ASSOCIATION'S NATIONAL TEAM (USASA). IN THIS ROLE, ROGERS HAS COACHED INTERNATIONAL GAMES AGAINST MEXICO, AUSTRALIA, AND THE USA, AS WELL AS SEVERAL UNDER-20 NATIONAL TEAMS.

PRIOR TO HIS SUCCESS WITH THE USASA TEAM, ROGERS WAS THE HEAD COACH OF THE REGION IV WOMEN'S OLYMPIC DEVELOPMENT PROGRAM TEAM, WHICH WON GOLD MEDALS AT THE U.S. SOCCER FESTIVAL IN 1996, 1998, 2000 AND 2002.

OVERALL, ROGERS HAS GUIDED 11 PLAYERS TO THE PROFESSIONAL RANKS, 27 TO REGIONAL TEAMS, 18 TO NATIONAL TEAMS AND 5 PLAYERS TO WORLD CUP COMPETITION.

THE HOME DEPOT CENTER

18400 AVALON BLVD.
 CARSON, CA 90746

THE HOME DEPOT CENTER IS A 125-ACRE DEVELOPMENT IN CARSON, CALIF., FEATURING STATE-OF-THE-ART STADIUMS AND FACILITIES FOR SOCCER, TENNIS, TRACK & FIELD, CYCLING, LACROSSE, RUGBY, VOLLEYBALL, BASEBALL, SOFTBALL, BASKETBALL AND OTHER SPORTS. DESIGNATED AS AN "OFFICIAL U.S. OLYMPIC TRAINING SITE," THE HOME DEPOT CENTER IS THE NATION'S MOST COMPLETE TRAINING FACILITY FOR OLYMPIC, AMATEUR AND PROFESSIONAL ATHLETES.



LOS ANGELES SOL

CREATED AROUND A 27,000-SEAT SOCCER STADIUM, 8,000-SEAT TENNIS STADIUM, 10,000-SEAT TRACK & FIELD FACILITY AND A 2,450-SEAT INDOOR VELODROME -THE ADT EVENT CENTER - THE COMPLEX IS LOCATED ON THE CAMPUS OF CALIFORNIA STATE UNIVERSITY, DOMINGUEZ HILLS. THE HOME DEPOT CENTER IS HOME TO THREE PROFESSIONAL SPORTS TEAMS - MAJOR LEAGUE SOCCER'S LOS ANGELES GALAXY AND CHIVAS USA AND WOMEN'S PROFESSIONAL SOCCER'S LOS ANGELES SOL.

FEATURED PLAYERS

MARTA VIEIRA DA SILVA (MARTA)

POSITION: FORWARD

HEIGHT: 5'4"

HOMETOWN: DOIS RIACHOS, ALAGOAS, BRAZIL

LAST CLUB: UMEA IK

COUNTRY: BRAZIL

MARTA, THE THREE-TIME DEFENDING FIFA WOMEN'S WORLD PLAYER OF THE YEAR, ANNOUNCED ON JANUARY 12, 2009 THAT SHE WAS JOINING THE LOS ANGELES SOL.

A GIFTED LEFT-FOOTED ATTACKING PLAYER WITH A TALENT FOR GOAL-SCORING, MARTA HAS EMERGED AS ARGUABLY THE BEST FEMALE SOCCER PLAYER IN THE WORLD, WHILE ENJOYING UNPARALLELED INTERNATIONAL POPULARITY.

ALY WAGNER

POSITION: MIDFIELD

HEIGHT: 5'5"

HOMETOWN: SAN JOSE, CA

LAST CLUB: SAN DIEGO SPIRIT (WUSA)

COUNTRY: USA

ALY HAS REPRESENTED THE UNITED STATES IN INTERNATIONAL PLAY 126 TIMES AND IS A TWO-TIME OLYMPIC GOLD MEDALIST, IN 2004 IN ATHENS AND MOST RECENTLY IN 2008 IN BEIJING.

IN 2002, WHILE AT SANTA CLARA UNIVERSITY, ALY WAS AWARDED WITH THE MISSOURI ATHLETIC CLUB'S HERMANN TROPHY WHICH IS PRESENTED TO COLLEGE SOCCER'S TOP PLAYER.

LOS ANGELES SOL



SHANNON BOXX

POSITION: MIDFIELD

HEIGHT: 5'8"

HOMETOWN: REDONDO BEACH, CA

LAST CLUB: NEW YORK POWER (WUSA)

COUNTRY: USA

SHANNON HAS REPRESENTED THE UNITED STATES IN INTERNATIONAL PLAY 103 TIMES AND IS A TWO-TIME OLYMPIC GOLD MEDALIST, IN 2004 IN ATHENS AND MOST RECENTLY IN 2008 IN BEIJING. SHE HAS BEEN WITH THE NATIONAL TEAM SINCE 2003 AND WAS TOURNAMENT MVP AT THE 2004 AND 2006 ALGARVE CUP.

PR CONTACT INFORMATION

NICK AMMAZZALORSO - DIRECTOR OF PUBLIC RELATIONS

562.546.6011 (O)

310.318.4566 (C)

E-MAIL: NAMMAZZALORSO@LEADERENTERPRISES.COM

MIKE IWAMASA - SOL COMMUNICATIONS

562.546.6015 (O)

415.412.9505 (C)

E-MAIL: MIWAMASA@LEADERENTERPRISES.COM

ERIN LOPEZ - SOL COMMUNICATIONS

714.742.8316 (C)

E-MAIL: ELOPEZ@LEADERENTERPRISES.COM



SKY BLUE FC

80 COTTONTAIL LANE, SUITE 400
SOMERSET, NJ 08873
(732) 271-7700

CONTACT@SKYBLUESOCCER.COM | WWW.SKYBLUEFC.COM

IAN SAWYERS - GENERAL MANAGER & HEAD COACH

IAN SAWYERS BOASTS AN IMPRESSIVE COACHING RÉSUMÉ, INCLUDING A TERM AS HEAD COACH OF THE SAN JOSE CYBER RAYS DURING ALL THREE YEARS OF THE WOMEN'S UNITED SOCCER ASSOCIATION FROM 2001 TO 2003. WITH SAN JOSE, HE GARNERED THE WUSA CHAMPIONSHIP AND WAS NAMED WUSA COACH OF THE YEAR 2001, THE FIRST YEAR OF THAT LEAGUE'S EXISTENCE.

AS A COLLEGE COACH AT STANFORD, SAWYERS RACKED UP A 50-8-4 MARK IN HIS THREE YEARS IN CHARGE OF THE CARDINAL FROM 1993 TO 1995, INCLUDING A TRIP TO THE NCAA COLLEGE CUP SEMIFINALS IN 1993. HE ALSO COACHED THE SACRAMENTO STORM OF THE USWISL/W-LEAGUE FROM 1993 TO 1998.

THE HUSBAND OF FORMER UNITED STATES WOMEN'S NATIONAL TEAM HALL OF FAME MEMBER JULIE FOUDY, SAWYERS HAS ASSISTED FOUDY SINCE 2005 WITH THE OPERATION OF THE JULIE FOUDY SPORTS LEADERSHIP ACADEMY AND FOUNDATION, WHICH RUNS IN MULTIPLE LOCATIONS ACROSS THE COUNTRY INCLUDING LOCALLY AT PEDDIE SCHOOL IN HIGHTSTOWN, NJ. THE ACADEMY STRIVES TO TEACH YOUNG GIRLS AND WOMEN LIFE-LONG LEADERSHIP SKILLS THROUGH SOCCER.

TD BANK BALLPARK - BRIDGEWATER, NJ

SKY BLUE FC WILL PLAY ITS FIRST TWO GAMES OF THE 2009 SEASON AT TD BANK BALLPARK IN BRIDGEWATER, NJ. HOME OF THE SOMERSET PATRIOTS, TD BANK BALLPARK IS KNOWN AS "THE JEWEL OF THE ATLANTIC LEAGUE."

PREVIOUSLY KNOWN AS COMMERCE BANK BALLPARK, THE STADIUM OPENED ITS GATES ON JUNE 7, 1999 FOR THE FIRST-EVER SOMERSET PATRIOTS HOME GAME IN FRONT OF 6,506 FANS. IN A SPECIAL OPENING DAY CEREMONY, GOVERNOR CHRISTIE TODD WHITMAN AND NEW JERSEY OFFICIALS GAVE THEIR SEAL OF APPROVAL FOR WHAT WOULD BECOME ONE OF THE MOST SUCCESSFUL MINOR LEAGUE BALLPARKS THROUGHOUT THE NATION, DRAWING OVER 2,100,000 FANS BY ITS SIXTH SEASON.

THE 6,100 SEAT BALLPARK WILL BE CONFIGURED FOR SOCCER WITH A 110' X 70' GRASS PLAYING SURFACE RUNNING FROM HOME PLATE THROUGH THIRD BASE. THE BALLPARK FEATURES SEATS WITH BACKS AND CUP HOLDERS FOR FANS TO HAVE EVERY COMFORT WHEN ENJOYING THE GAME IN THE PREMIUM FIELD BOX, FIELD BOX, AND UPPER BOX SEATING AREAS. IN ADDITION, THE BALLPARK FEATURES 20 LUXURY SUITES, A PICNIC AREA AND AN EXECUTIVE PARTY DECK. THE PRESS BOX HAS INTERNET ACCESS, CAMERA PLATFORMS AND THE CAPABILITY OF HANDLING 20 MEDIA PERSONNEL FOR BOTH TV AND RADIO BROADCASTS.

TD BANK BALLPARK IS A MULTI-USE FACILITY THAT HAS BEEN THE HOME OF THE BIG EAST BASEBALL CHAMPIONSHIP TOURNAMENT AND COUNTY BASEBALL TOURNAMENTS DURING THE SEASON. IN THE OFF-SEASON, THE BALLPARK IS THE SITE OF THE BIG APPLE CIRCUS, THE NEW JERSEY STATE FAIR, AND SOMERSET COUNTY PARK COMMISSION CONCERTS.

SKY BLUE FC



YURCAK FIELD - PISCATAWAY, NJ

THE PRIMARY HOME VENUE FOR SKY BLUE FC IN ITS INAUGURAL SEASON WILL BE YURCAK FIELD ON THE CAMPUS OF RUTGERS UNIVERSITY IN PISCATAWAY, NJ. OFFICIALLY KNOWN AS "THE SOCCER/LACROSSE STADIUM AT YURCAK FIELD" IN HONOR OF RONALD N. YURCAK, A 1965 ALL-AMERICAN RUTGERS LACROSSE PLAYER, THE STADIUM WAS DEDICATED IN 1994 AND HAS HOSTED THE LARGEST CROWDS TO SEE COLLEGE SOCCER IN AMERICA.

YURCAK FIELD SEATS 5,000 FANS IN THE GRANDSTAND WITH ROOM FOR ADDITIONAL FANS ACROSS THE FIELD IN THE STADIUM'S LAWN AREA. FEATURING A 120' X 75' GRASS PLAYING SURFACE, THE STADIUM IS COMPLETE WITH STATE OF THE ART IRRIGATION AND DRAINAGE SYSTEMS, AND A MODERN PRESS BOX THAT HAS CAMERA PLATFORMS AND THE CAPABILITY OF HANDLING 30 MEDIA PERSONNEL FOR BOTH TV AND RADIO BROADCASTS

THE 2009 WPS SEASON WILL NOT BE SKY BLUE'S FIRST EVENT AT YURCAK FIELD. SKY BLUE SOCCER BROUGHT ELITE WOMEN'S SOCCER TO THE RUTGERS VENUE IN 2007 WHEN THE ORGANIZATION COMPOSED A SKY BLUE SELECT TEAM TO FACE THE CHINA WOMEN'S NATIONAL TEAM IN AN EXHIBITION MATCH ON JUNE 12. IN FRONT OF A PACKED STADIUM, SKY BLUE SELECT PLAYED TO A SCORELESS TIE WITH CHINA, WHICH WAS PREPARING FOR THE 2007 FIFA WOMEN'S WORLD CUP.

FEATURED PLAYERS

NATASHA KAI

POSITION: FORWARD

HOMETOWN: KAHUKU, HI

COUNTRY: USA

NATASHA KAI STORMED ONTO THE SCENE WITH THE UNITED STATES WOMEN'S NATIONAL TEAM IN 2006 AT THE ALGARVE CUP IN PORTUGAL WITH GOALS IN EACH OF HER FIRST TWO GAMES AND HAS BEEN A DANGEROUS STRIKER ON THE INTERNATIONAL LEVEL SINCE. KAI HELPED THE U.S. CAPTURE THE GOLD MEDAL AT THE 2008 BEIJING OLYMPICS WHEN SHE SCORED THE GAME-WINNING GOAL AGAINST CANADA IN EXTRA TIME IN THE QUARTER FINALS. SHE ALSO PLAYED IN THE 2007 FIFA WOMEN'S WORLD CUP IN CHINA. ON THE COLLEGIATE LEVEL, SHE WAS THE FIRST PLAYER IN WESTERN ATHLETIC CONFERENCE (WAC) HISTORY TO EARN THREE PLAYER OF THE YEAR AWARDS.



SKY BLUE FC

HEATHER O'REILLY

POSITION: MIDFIELD/FORWARD
 HOMETOWN: EAST BRUNSWICK, NJ
 COUNTRY: USA

AT JUST 24 YEARS OF AGE, HEATHER O'REILLY IS A VETERAN OF THE UNITED STATES WOMEN'S NATIONAL TEAM. SHE MADE HER SENIOR INTERNATIONAL DEBUT IN MARCH OF 2002 AT 17-YEARS OLD AND HAS SINCE CAPTURED TWO OLYMPIC GOLD MEDALS AND HAS APPEARED AT THE 2007 FIFA WOMEN'S WORLD CUP. O'REILLY ALSO LED THE U.S. UNDER-19 NATIONAL TEAM TO THE INAUGURAL FIFA YOUTH WORLD CHAMPIONSHIP IN 2002 AND WAS NAMED U.S. SOCCER'S YOUNG FEMALE ATHLETE OF THE YEAR IN 2004. ON THE COLLEGIATE LEVEL, O'REILLY CAPTURED TWO NCAA COLLEGE CUP CHAMPIONSHIPS (2003, 2006) AT THE UNIVERSITY OF NORTH CAROLINA.

CHRISTIE RAMPONE

POSITION: DEFENDER
 HOMETOWN: POINT PLEASANT, NJ
 COUNTRY: USA

NAMED THE UNITED STATES WOMEN'S NATIONAL TEAM CAPTAIN IN 2008, CHRISTIE RAMPONE IS AN INFLUENTIAL LEADER FROM HER CENTER DEFENDER POSITION WITH 215 INTERNATIONAL CAPS TO HER CREDIT. SHE HAS PLAYED IN THREE FIFA WOMEN'S WORLD CUPS, INCLUDING A CHAMPIONSHIP TROPHY IN 1999, AND THREE OLYMPICS INCLUDING GOLD MEDALS IN 2004 AND 2008. RAMPONE PLAYED FOR THE NEW YORK POWER IN THE WUSA FROM 2001 TO 2003 APPEARING IN 55 MATCHES OVER THREE SEASONS. SHE WAS A STAR FORWARD AT MONMOUTH UNIVERSITY FINISHING AS THE SCHOOL'S ALL-TIME LEADING SCORER WITH 79 GOALS AND 54 ASSISTS.

PR CONTACT INFORMATION:

MELISSA DZIWGO
 MANAGER, MARKETING & PUBLIC RELATIONS
 (732) 271-7700 EXT. 305
 MDZIWGO@SKYBLUESOCCER.COM

PATRIC SANTO PIETRO
 MANAGER, NEW MEDIA & COMMUNICATIONS
 (732) 271-7700 EXT. 304
 PSP@SKYBLUESOCCER.COM

GLORIA AVERBUCH
 DIRECTOR, MARKETING & PUBLIC RELATIONS
 (732) 271-7700 EXT. 307
 GAVERBUCH@SKYBLUESOCCER.COM

SAINT LOUIS ATHLETICA

ONE REGENCY PLAZA DRIVE
SUITE 150
COLLINSVILLE, IL
1-888-STL-GOAL
WWW.STL-WPS.COM



JORGE BARCELLOS - HEAD COACH & GENERAL MANAGER

ON THE HEELS OF HIS SUCCESS AT THE BEIJING OLYMPIC GAMES JORGE BARCELLOS JOINED SAINT LOUIS ATHLETICA AS HEAD COACH AND GENERAL MANAGER IN SEPTEMBER OF 2008. BARCELLOS HAD HELD THE ROLE OF HEAD COACH OF THE BRAZILIAN WOMEN'S NATIONAL TEAM SINCE 2006. UNDER HIS LEADERSHIP BRAZIL ACHIEVED THEIR HIGHEST FINISHES IN WORLD CHAMPIONSHIP EVENTS. IN 2007 BARCELLOS GUIDED BRAZIL TO THE FIFA WOMEN'S WORLD CUP FINAL AND IN 2008 BARCELLOS WOULD LEAD BRAZIL TO THE OLYMPIC FINALS. BARCELLOS IS THE FIRST BRAZILIAN COACH TO TAKE THE WOMEN'S NATIONAL TEAM INTO BACK TO BACK FINALS.

CARLOS MACHADO - ASSISTANT COACH

CARLOS MACHADO WAS BORN AND RAISED IN BRAZIL. MACHADO GREW UP IN PORTO ALEGRE AND BEGAN HIS PLAYING CAREER AT THE AGE OF 16 FOR SAN JOSE FC. MACHADO CAME TO THE UNITED STATES IN 1988 ON A FULL ATHLETIC SCHOLARSHIP FROM BETHEL COLLEGE IN MISHAWAKA, INDIANA. MACHADO BEGAN HIS COACHING CAREER IN 1997 WHEN HE WAS NAMED HEAD COACH AND TRAINER FOR TEAM CHICAGO. MACHADO WOULD COACH BOYS AND GIRLS SQUADS FOR THE NAPERVILLE, ILLINOIS CLUB FOR THE NEXT 10 YEARS. DURING THIS TIME HE MET AND HAD THE FIRST OPPORTUNITY TO WORK WITH JORGE BARCELLOS.

RALPH KORTE STADIUM

SOUTHERN ILLINOIS UNIVERSITY AT EDWARDSVILLE
EDWARDSVILLE, ILL.

THE STADIUM IS NAMED FOR RALPH KORTE (CORE-TEE), A 1968 ALUMNUS OF SIUE. THE STADIUM HAS 3,000 PERMANENT SEATS WHICH WILL EXPAND TO 5,000 PLUS FOR SAINT LOUIS ATHLETICA HOME GAMES WITH THE ADDITION OF BLEACHERS ON THE EAST SIDE OF THE FIELD AND BEHIND THE GOALS.

THE FIELD ITSELF AT KORTE STADIUM IS NAMED BOB GUELKER (GELL-KERR) FIELD IN HONOR OF THE FORMER SIUE SOCCER HEAD COACH WHO SERVED IN THAT ROLE FROM 1967 TO 1986.. THE STADIUM WAS THE SITE OF THE 1994 U.S. OLYMPIC FESTIVAL AND IN 1998 JACKIE JOYNER-KERSEE COMPETED IN A NATIONALLY TELEVISIONED TRACK AND FIELD EVENT HELD HERE. KORTE STADIUM HAS HOSTED THE 1997, 1998, AND 2001 DIVISION II MEN'S OUTDOOR TRACK AND FIELD CHAMPIONSHIPS AS WELL. THE SITE OF KORTE STADIUM HAS ALSO HOSTED THE 1970 AND 1975 NCAA MEN'S SOCCER CHAMPIONSHIPS. EACH SUMMER ILLINOIS' PRAIRIE STATE GAMES RETURN TO KORTE STADIUM FOR THEIR TRACK AND FIELD COMPETITIONS. THE STADIUM PRESENTLY HOSTS A VARIETY OF HIGH SCHOOL, COLLEGIATE, NATIONAL AMATEUR AND INTERNATIONAL ATHLETIC EVENTS.



SAINT LOUIS ATHLETICA

FEATURED PLAYERS

LORI CHALUPNY

POSITION: MIDFIELDER

HEIGHT: 5'4"

HOMETOWN: ST. LOUIS, MISSOURI

COUNTRY: USA

LORI CHALUPNY HAS BEEN CAPPED BY THE UNITED STATES OVER 80 TIMES IN HER CAREER. IN 2008 SHE WAS A PART OF THE U.S. WOMEN'S NATIONAL TEAM THAT WON THE GOLD MEDAL IN THE BEIJING OLYMPIC GAMES. IN 2007, CHALUPNY WAS A MEMBER OF THE U.S. WORLD CUP SQUAD THAT WOULD FINISH THIRD IN CHINA. SHE IS ALSO A 6-TIME ALGARVE CUP VETERAN AND HAS FEATURED FOR THE U.S. YOUTH NATIONAL TEAMS IN U-23 AND U-19 WORLD CUPS.

HOPE SOLO

POSITION: GOALKEEPER

HEIGHT: 5'9"

HOMETOWN: RICHLAND, WASHINGTON

COUNTRY: USA

HOPE SOLO ANCHORED THE U.S. WOMEN'S OLYMPIC TEAM THAT WON THE GOLD MEDAL IN BEIJING. HOPE PLAYED IN EVERY MINUTE OF EVERY GAME OF THE 2008 OLYMPICS. SOLO HAS BEEN A STANDOUT PERFORMER FOR THE UNITED STATES IN WORLD CUPS AND ANNUAL INTERNATIONAL TOURNAMENTS. SHE IS THE FIRST CHOICE GOALKEEPER FOR THE UNITED STATES AND IS RECOGNIZED BY MANY AS THE BEST FEMALE GOALKEEPER IN THE WORLD.

TINA ELLERTSON

POSITION: FORWARD

HEIGHT: 5'9"

HOMETOWN: VANCOUVER, WASHINGTON

COUNTRY: USA

TINA ELLERTSON JOINS SAINT LOUIS ATHLETICA AS PERHAPS ONE OF THE MOST VERSATILE PLAYERS ON THE CLUB AND CERTAINLY ONE OF THE MOST ATHLETIC. ELLERTSON PLAYED COLLEGIATELY WITH HOPE SOLO AT THE UNIVERSITY OF WASHINGTON. ELLERTSON WAS A MEMBER OF THE 2007 WORLD CUP TEAM AND HAS PLAYED WITH THE UNITED STATES ALL OVER THE GLOBE. ELLERTSON IS THE MOTHER OF TWO CHILDREN, HER YOUNGEST DAUGHTER MYA WAS BORN ON MAY 4, 2008. HER FIRST CHILD, MACKENZIE WAS BORN IN 2001. ELLERTSON ALSO HAS A TWIN SISTER, CRYSTAL, THAT PLAYED COLLEGE SOCCER AT THE UNIVERSITY OF FLORIDA.

SAINT LOUIS ATHLETICA

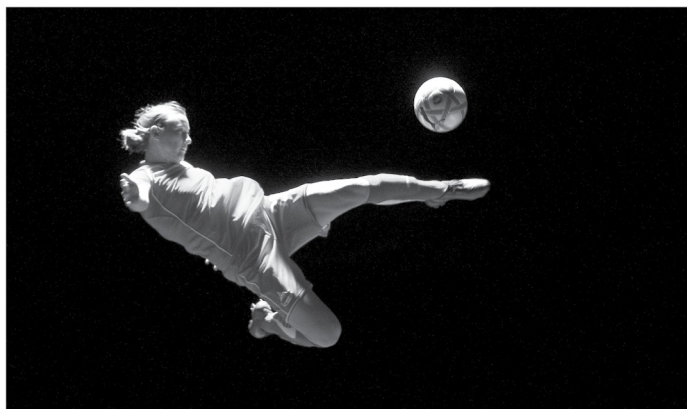


PR CONTACT INFORMATION

TONY HUBERT, DIRECTOR OF PUBLIC RELATIONS

314-565-0441 (C)

EMAIL: THUBERT@SAINTLOUISATHLETICA.COM



ISIPHOTOS

Proud to be the Official Photographer of WPS

www.isiphotos.com • info@isiphotos.com • 650.906.7753



Bronto is proud to be on the WPS team,
keeping this loyal community connected
through email.

Building relationships and trust with your fans is critical for sports teams. Bronto understands that. We combine outstanding service, robust features and comprehensive analytics to deliver what you need for creating successful, relevant email marketing campaigns. Visit bronto.com to learn more.

bronto.com • 888.BRONTO.1





**WOMEN'S
PROFESSIONAL SOCCER**

ABOUT WPS

WPS MISSION STATEMENT

OUR MISSION IS TO BE THE PREMIER WOMEN'S SOCCER LEAGUE IN THE WORLD, AND THE GLOBAL STANDARD BY WHICH WOMEN'S PROFESSIONAL SPORTS ARE MEASURED.

LEAGUE OFFICE

1000 BRANNAN ST. SUITE #401
SAN FRANCISCO, CA
MAIN PHONE: (415) 553-4469
FAX: (415) 553-4459
WWW.WOMENSPROSOCCER.COM

BOARD OF GOVERNORS

BRIAN NESMITH	FC GOLD PRIDE (BAY AREA)
MICHAEL STOLLER	BOSTON BREAKERS
PETER WILT	CHICAGO RED STARS
SCOTT HANLEY	LOS ANGELES SOL
THOMAS HOFSTETTER	SKY BLUE FC (NJ)
JEFF COOPER	SAINT LOUIS ATHLETICA
MAUREEN HENDRICKS	WASHINGTON FREEDOM

LEAGUE STAFF

TONYA ANTONUCCI	COMMISSIONER
MARY HARVEY	CHIEF OPERATING OFFICER
VICKI VEENKER	LEAGUE GENERAL COUNSEL
JASON COHEN	DIRECTOR OF BUSINESS DEVELOPMENT/ASSOCIATE COUNSEL
RACHEL EPSTEIN	DIRECTOR OF MARKETING
ROB PENNER	DIRECTOR OF COMMUNICATIONS
KARYN LUSH	HEAD OF NEW MEDIA
AARON BURCH	LEAGUE DEVELOPMENT/RELATIONSHIPS MANAGER
JILL COY	MARKETING MANAGER
AILEEN NASYPANY	OFFICE MANAGER/ASSISTANT TO THE COMMISSIONER
AMANDA VANDERVORT	WEB COORDINATOR

ABOUT WPS

WOMEN'S PROFESSIONAL SOCCER IS THE HIGHEST-LEVEL WOMEN'S PROFESSIONAL SOCCER LEAGUE IN NORTH AMERICA. FORMED IN SEPTEMBER 2007 AS THE RESULT OF THE EFFORTS OF THE WOMEN'S SOCCER INITIATIVE, INC., WPS BEGINS PLAY MARCH 29, 2009, CONSISTING OF SEVEN TEAMS ACROSS THE COUNTRY.

THE MARKETS FOR THE 2009 SEASON ARE BAY AREA, BOSTON, CHICAGO, LOS ANGELES, NEW JERSEY/NEW YORK, ST. LOUIS, AND WASHINGTON, D.C. WPS HAS FINALIZED PHILADELPHIA AS ITS EIGHTH FRANCHISE FOR 2010, AND EXPECTS TO EXPAND TO ATLANTA WHILE CONTINUING TO EXPLORE ADDITIONAL POTENTIAL FRANCHISES FOR 2010 AND BEYOND. MORE MARKETS WILL BE ANNOUNCED AS THEY ARE ADDED TO THE LEAGUE.

FRANCHISES ARE INDIVIDUALLY OWNED AND OPERATED BY A GROUP OF INVESTORS IN EACH MARKET. THESE INCLUDE AEG-L.A. WOMEN'S SOCCER LLC, BAY AREA WOMEN'S SOCCER LLC, BOSTON WOMEN'S SOCCER LLC, CHICAGO PROFESSIONAL WOMEN'S SOCCER LLC, HENDRICKS INVESTMENT HOLDINGS LLC (WASHINGTON D.C.), ST. LOUIS UNITED SOCCER LLC

AND SKY BLUE WOMEN'S SOCCER, INC. (NEW JERSEY/NEW YORK).

IN ADDITION, TWO-TIME NBA MVP STEVE NASH AND FORMER YAHOO! PRESIDENT AND COO JEFF MALLETT ARE INVESTORS AND PART OWNERS IN THE LEAGUE.

AMONG THE FIRMS RETAINED BY WPS TO PROVIDE PROFESSIONAL SERVICES ARE:

- CYPRESS CONSULTING FOR WEB DESIGN
- McCANN ERICKSON FOR MARKETING
- SHEARMAN & STERLING LLP FOR LEAGUE COUNSEL
- SOCCER UNITED MARKETING (SUM) FOR NATIONAL SPONSORSHIP SALES & LICENSING

WPS Logo

THE WPS LOGO, DEVELOPED BY BRANDING AGENCY ADRENALIN, INC., FEATURES A DEEP NAVY, RED AND GOLD COLOR SCHEME AND SHOWCASES A FAMILIAR SILHOUETTE – FIFA WORLD CUP CHAMPION, OLYMPIC GOLD MEDAL WINNER AND HALL OF FAME PLAYER MIA HAMM, RENOWNED AS A PIONEER FOR WOMEN'S SOCCER.

WPS TIMELINE

SEPTEMBER 2003: FOLLOWING THE SUSPENSION OF OPERATIONS OF THE WOMEN'S UNITED SOCCER ASSOCIATION (WUSA), THE WUSA REORGANIZATION COMMITTEE IS FORMED TO DETERMINE THE BEST METHOD TO RE-LAUNCH A WOMEN'S PROFESSIONAL SOCCER LEAGUE IN THE UNITED STATES.

JULY 2004: THE WUSA REORGANIZATION COMMITTEE, THE WOMEN'S SPORTS FOUNDATION, AND BUSINESS EXECUTIVES BOB GREENBERG AND CHRIS MARKGRAF (BOTH OF WHOM GO ON TO CREATE WSII WITH JULIE FOU DY AND TONYA ANTONUCCI), HOLD A SUMMIT IN NEW YORK CITY TO IDENTIFY AND EXAMINE THE LESSONS LEARNED FROM THE WUSA'S FAILURE AND TO DETERMINE THE BEST PATH FORWARD TOWARD THE LAUNCH OF A VIABLE NEW LEAGUE.

NOVEMBER 2004: AS A RESULT OF THE SUMMIT, THE NOT-FOR-PROFIT WOMEN'S SOCCER INITIATIVE, INC. (WSII) IS FORMED WITH THE SUPPORT OF THE WUSA PLAYERS ASSOCIATION TO PROMOTE AND SUPPORT ALL ASPECTS OF WOMEN'S SOCCER IN THE UNITED STATES CHIEFLY BY ENCOURAGING AND ENABLING THE CREATION OF A WORLD-CLASS PROFESSIONAL WOMEN'S SOCCER LEAGUE.

FEBRUARY 2005: THE U.S. SOCCER FEDERATION AND U.S. SOCCER FOUNDATION EACH PROVIDE OPERATIONAL GRANTS TO WSII TO ASSIST IN SUPPORTING WSII'S EFFORTS TO DEVELOP A VIABLE BUSINESS MODEL AND BRING BACK WOMEN'S PROFESSIONAL SOCCER.

FEB. 27, 2007: WSII CEO TONYA ANTONUCCI ANNOUNCES THAT AEG; JOHN HENDRICKS OF FREEDOM SOCCER LLC; JEFF COOPER OF ST. LOUIS UNITED SOCCER LLC; SOCCER INITIATIVE, LLC HAVE SIGNED LETTERS OF INTENT TO BECOME CHARTER MEMBERS OF THE NEW WOMEN'S PROFESSIONAL LEAGUE.

APRIL 18, 2007: WSII CEO TONYA ANTONUCCI ANNOUNCES THAT SKY BLUE SOCCER AND BOSTON WOMEN'S SOCCER LLC HAVE AGREED TO JOIN THE PREVIOUSLY ANNOUNCED GROUPS AS CHARTER MEMBERS OF THE NEW WOMEN'S PROFESSIONAL LEAGUE.

SEPT. 4, 2007: A NEW NORTH AMERICAN WOMEN'S PROFESSIONAL SOCCER LEAGUE, UNDER THE TEMPORARY WORKING TITLE OF WOMEN'S SOCCER LLC, IS FORMALLY ESTABLISHED IN THE UNITED STATES BY SEVEN INVESTOR GROUPS, WITH PLAY BEGINNING IN THE SPRING OF 2009. INITIAL TEAMS WILL BE BASED IN BOSTON, CHICAGO, LOS ANGELES, NEW JERSEY/NEW YORK, ST. LOUIS, AND WASHINGTON D.C. TONYA ANTONUCCI IS NAMED THE LEAGUE'S COMMISSIONER. SOCCER UNITED MARKETING (SUM), THE COMMERCIAL ARM OF MLS, IS NAMED THE LEAGUE'S REPRESENTATIVE FOR NATIONAL SPONSORSHIP SALES AND LICENSING.

OCT. 15, 2007: THE LEAGUE SETS UP TEMPORARY OFFICES IN DOWNTOWN SAN FRANCISCO, CALIF. AND HIRES AARON BURCH AS LEAGUE RELATIONSHIPS/DEVELOPMENT MANAGER.

JAN. 17, 2008: THE LEAGUE'S BRAND NAME, LOGO AND WEBSITE ARE LAUNCHED AT THE NATIONAL SOCCER COACHES ASSOCIATION CONVENTION IN BALTIMORE, MD. JOE CUMMINGS IS NAMED SENIOR COO CONSULTANT AND VICKI VEENKER IS NAMED GENERAL COUNSEL.

FEB. 5, 2008: TWO-TIME NBA MVP STEVE NASH AND FORMER YAHOO! PRESIDENT AND CHIEF OPERATING OFFICER JEFF MALLETT BECOME INVESTORS AND PART OWNERS OF THE LEAGUE.

FEB. 15, 2008: WOMEN'S PROFESSIONAL SOCCER (WPS) RECEIVES PROVISIONAL DIVISION 1 STATUS AT U.S. SOCCER'S ANNUAL GENERAL MEETING (AGM). THE LEAGUE WILL RECEIVE FULL DIVISION 1 STATUS JUST PRIOR TO ITS INAUGURAL SEASON AT THE 2009 U.S. SOCCER AGM IN ORLANDO, FLA.

FEB. 28, 2008: THE LEAGUE MOVES INTO ITS PERMANENT OFFICES AT 1000 BRANNAN ST., SAN FRANCISCO, CALIF.

MAY 27, 2008: PHILADELPHIA INVESTORS SIGN A LETTER OF INTENT WITH THE LEAGUE REGARDING AN EXPANSION TEAM FOR THE 2010 SEASON.

JULY 8, 2008: WOMEN'S PROFESSIONAL SOCCER (WPS) ANNOUNCES THE POST-OLYMPICS TIMELINE FOR NATIONAL TEAM PLAYER ALLOCATION, DRAFTS AND TEAM TRYOUTS.

AUG. 11, 2008: ATLANTA INVESTORS SIGN A LETTER OF INTENT WITH THE LEAGUE REGARDING AN EXPANSION TEAM FOR THE 2010 SEASON.

SEPT. 3, 2008: A GROUP OF BAY AREA INVESTORS JOIN THE LEAGUE FOR THE 2009 WPS INAUGURAL SEASON.

SEPT. 16, 2008: IN AN ANNOUNCEMENT CO-HOSTED BY WPS COMMISSIONER TONYA ANTONUCCI AND WPS PART-OWNER AND TWO-TIME NBA MVP STEVE NASH IN NEW YORK CITY, MEMBERS OF THE U.S. WOMEN'S NATIONAL TEAM PLAYER POOL ARE ALLOCATED TO WPS TEAMS.

SEPT. 24, 2008: WOMEN'S PROFESSIONAL SOCCER (WPS) ANNOUNCES THE RESULTS OF ITS WPS INITIAL INTERNATIONAL DRAFT, OFFICIALLY ASSIGNING THE WPS-PLAYING RIGHTS OF THOSE SELECTED BY THE INDIVIDUAL TEAMS.

OCT. 6, 2008: WOMEN'S PROFESSIONAL SOCCER (WPS) AND FOX SOCCER CHANNEL ANNOUNCE A MULTI-YEAR PARTNERSHIP TO TELEVISION A LIVE NATIONAL SUNDAY NIGHT WPS GAME OF THE WEEK ON AMERICA'S PREMIER SOCCER NETWORK BEGINNING IN 2009, THE INAUGURAL SEASON FOR WPS.

OCT. 6, 2008: THE WPS GENERAL DRAFT IS CONDUCTED, CONSISTING OF FOUR ROUNDS OF SELECTIONS OF INTERNATIONAL AND DOMESTIC PLAYERS FOR ALL SEVEN WPS TEAMS.

DEC. 15, 2008: GLOBAL SPORT LIFESTYLE BRAND PUMA AND WOMEN'S PROFESSIONAL SOCCER (WPS) ANNOUNCE AN EXCLUSIVE PARTNERSHIP MAKING PUMA AN OFFICIAL FOUNDING PARTNER OF WPS AND AN OFFICIAL SPONSOR OF ALL WPS FRANCHISES.

DEC. 16, 2008: WOMEN'S PROFESSIONAL SOCCER (WPS) ANNOUNCES ITS OPENING GAME AND SLATE OF HOME OPENERS FOR THE INAUGURAL 2009 WPS SEASON. HEADLINING THE LIST OF GAMES IS THE "WPS INAUGURAL MATCH" FEATURING THE LOS ANGELES SOL AGAINST THE WASHINGTON FREEDOM AT THE HOME DEPOT CENTER IN CARSON, CA.

JAN. 16, 2009: PUMA AND WOMEN'S PROFESSIONAL SOCCER (WPS) UNVEIL THE WPS OFFICIAL MATCH BALL AT THE NSCAA CONVENTION IN ST. LOUIS, MO.

JAN. 16, 2009: WOMEN'S PROFESSIONAL SOCCER (WPS) HOLDS THE 2009 WPS DRAFT. THE BOSTON BREAKERS SELECT USC STANDOUT AND OLYMPIC GOLD MEDALIST, AMY RODRIGUEZ, AS THE FIRST-EVER NUMBER ONE COLLEGE DRAFT SELECTION.

JAN. 29, 2009: WOMEN'S PROFESSIONAL SOCCER (WPS) ANNOUNCES THE PLAYOFF FORMAT AND PLAYOFF DATES, WITH THE WPS FINAL SCHEDULED FOR AUG. 22 AT THE HOME FIELD OF THE WPS REGULAR SEASON CHAMPION.

FEB. 5, 2009: THE LEAGUE ANNOUNCES THE REGULAR SEASON SCHEDULE FOR ITS SEVEN FRANCHISES. EACH TEAM WILL PLAY A 20-GAME SCHEDULE WITH 10 HOME AND 10 AWAY MATCHES.

FEB. 24, 2009: PUMA, WPS FOUNDING SPONSOR, UNVEILS WPS HOME AND AWAY UNIFORMS AT A FASHION PRESENTATION IN MANHATTAN, NEW YORK.

MARCH 1, 2009: WOMEN'S PROFESSIONAL SOCCER (WPS) PLAYERS REPORT TO TRAINING CAMP AND WPS PRESEASON BEGINS.

MARCH 16, 2009: EACH TEAM ANNOUNCES ROSTER CUT DOWNS TO 24 PLAYERS PER TEAM.

MARCH 25, 2009: EACH TEAM ANNOUNCES 18-PLAYER ROSTERS (AND FOUR OPTIONAL DEVELOPMENT PLAYERS) FOR OPENING GAME.

MARCH 29, 2009: THE WPS INAUGURAL MATCH BETWEEN WASHINGTON FREEDOM AND LOS ANGELES SOL KICKS-OFF AT THE HOME DEPOT CENTER IN CARSON, CALIF.



TONYA ANTONUCCI

WPS COMMISSIONER

FOR OVER TWO DECADES, TONYA ANTONUCCI HAS EXPRESSED HER PASSION FOR WOMEN'S SOCCER AS A PLAYER, COACH, EXECUTIVE AND FAN. NOW HER DEDICATION TO THE GAME CONTINUES AS SHE SERVES AS WPS'S FIRST COMMISSIONER.

ANTONUCCI WAS NAMED WPS COMMISSIONER ON SEPT. 4, 2007 AFTER WORKING AS THE CEO OF WOMEN'S SOCCER INITIATIVE, INC. (WSII) FOR TWO AND A HALF YEARS. AT WSII, SHE SUCCESSFULLY ENGINEERED THE LAUNCH OF A WOMEN'S PROFESSIONAL SOCCER LEAGUE IN THE UNITED STATES BY DEVELOPING A VIABLE BUSINESS MODEL, DETERMINING THE DEMOGRAPHICS OF THE FAN BASE, CULTIVATING INVESTOR SUPPORT AND IDENTIFYING TEAM MARKETS.

PRIOR TO JOINING WSII, ANTONUCCI SPENT MORE THAN SEVEN YEARS WITH YAHOO, INC., WHERE AS SHE LAUNCHED YAHOO! SPORTS AND YAHOO! FANTASY SPORTS, AND SERVED AS DIRECTOR OF THOSE PROPERTIES. SUBSEQUENTLY, SHE WAS NAMED GENERAL MANAGER OF YAHOO'S PARTNERSHIP WITH FIFA AND OVERSAW THE COMMERCIALIZATION OF THE OFFICIAL, GLOBAL WEB SITES FOR THE 2002 FIFA MEN'S AND 2003 WOMEN'S WORLD CUPS.

IN ADDITION, ANTONUCCI HAS WORKED AS A PRODUCT MANAGER AT STARWAVE, A SOFTWARE COMPANY FUNDED BY MICROSOFT'S PAUL ALLEN; AS A CONTENT PRODUCER ON A PRECURSOR TO ESPN.COM; AND AS AN ASSISTANT WOMEN'S SOCCER COACH AT STANFORD UNIVERSITY AND SANTA CLARA UNIVERSITY WHILE WORKING ON AN M.B.A. DEGREE

A NATIVE OF EVERETT, WASH. AND A H.S. ALL-AMERICAN AND 1984 U.S. JR. NATIONAL TEAM MEMBER WHILE AT MARINER HIGH SCHOOL, ANTONUCCI IS A POLITICAL SCIENCE AND ECONOMICS GRADUATE OF STANFORD UNIVERSITY, WHERE SHE PLAYED COLLEGIATE SOCCER, WAS NAMED TO THE ALL-FAR WEST TEAM, AND CO-CAPTAINED THE STANFORD TEAM HER SENIOR YEAR. ANTONUCCI RESIDES IN THE BAY AREA.

MARY HARVEY

CHIEF OPERATING OFFICER

MARY HARVEY BRINGS HER EXPERIENCE AS AN INTERNATIONAL SOCCER EXECUTIVE AND OLYMPIC GOLD MEDALIST TO WOMEN'S PROFESSIONAL SOCCER, WHERE SHE WAS NAMED CHIEF OPERATING OFFICER ON NOV. 10, 2008.

HARVEY WAS MOST RECENTLY THE DIRECTOR OF DEVELOPMENT AT THE FEDERATION INTERNATIONALE DE FOOTBALL ASSOCIATION (FIFA) IN ZURICH, SWITZERLAND. WHEN SHE SIGNED ON TO JOIN FIFA IN 2003, HARVEY BECAME THE FIRST WOMAN AND FIRST AMERICAN TO RUN A BUSINESS DIVISION AS A MEMBER OF SENIOR MANAGEMENT AT THE INTERNATIONAL GOVERNING BODY. AT FIFA, HARVEY OVERSAW A TEAM OF 20 STAFF AND 50 CONSULTANTS GLOBALLY TO DELIVER PROGRAMS AND PROJECTS TO DEVELOP THE SPORT WORLDWIDE. HARVEY ALSO INITIATED THE LAUNCH OF SEVERAL IMPORTANT PROJECTS FOR THE DEVELOPMENT OF WOMEN'S SOCCER IN PARTICULAR INCLUDING A PROJECT THAT IDENTIFIED BEST PRACTICES IN THE DEVELOPMENT OF THE WOMEN'S GAME GLOBALLY, STAGING NEARLY A DOZEN SEMINARS INVOLVING OVER 150 COUNTRIES. THE FINDINGS FROM THIS PROJECT WERE PRESENTED AT THE 4TH FIFA WOMEN'S FOOTBALL SYMPOSIUM, A TWO-DAY EVENT ATTENDED BY 500 SENIOR FOOTBALL EXECUTIVES FROM 200 COUNTRIES.

PRIOR TO HER POSITION AT FIFA, HARVEY WORKED FOR GLOBAL CONSULTING POWERHOUSES, DELOITTE AND ACCENTURE, AND WAS A CONSULTANT TO THE CEO OF THE 1999 WOMEN'S WORLD CUP ON ISSUES RELATED TO TICKETING, PRICING AND MARKETING STRATEGIES.

ON THE FIELD, HARVEY ENJOYED AN EIGHT-YEAR CAREER WITH THE U.S. WOMEN'S NATIONAL TEAM, PLAYING FROM 1989-1996. SHE WAS THE STARTING GOALKEEPER FOR THE U.S. IN THE INAUGURAL 1991 WOMEN'S WORLD CUP AND A MEMBER OF THE 1996 OLYMPIC GOLD MEDAL-WINNING TEAM IN ATLANTA. SHE GRADUATED WITH A BACHELOR OF SCIENCE FROM THE UNIVERSITY OF CALIFORNIA AT BERKELEY'S WALTER A. HAAS SCHOOL OF BUSINESS AND RECEIVED HER MBA FROM THE ANDERSON SCHOOL OF BUSINESS AT UCLA. SHE RESIDES IN SAN FRANCISCO.



VICKI VEENKER

LEAGUE GENERAL COUNSEL

VICKI VEENKER BRINGS A STRONG AND DIVERSE LEGAL BACKGROUND TO THE OFFICE OF GENERAL COUNSEL. IN ADDITION TO WORKING WITH THE LEAGUE, SHE IS OF COUNSEL TO SHEARMAN & STERLING LLP IN ITS MENLO PARK, CALIFORNIA OFFICE. THE FOUNDING PARTNER OF THE FIRM'S SILICON VALLEY INTELLECTUAL PROPERTY GROUP, SHE HAS EXTENSIVE EXPERIENCE IN INTELLECTUAL PROPERTY-RELATED MATTERS AND IS ALSO A MEMBER OF THE FIRM'S SPORTS GROUP. VEENKER HAS BEEN LEAD COUNSEL TO INDUSTRY LEADERS IN FIELDS RANGING FROM TELECOMMUNICATIONS TO ENTERTAINMENT TO BIOTECHNOLOGY IN PATENT, TRADEMARK, TRADE SECRET, AND COPYRIGHT CASES. SHE ALSO COUNSELS CLIENTS ON LICENSING AND OTHER TRANSACTIONS.

VEENKER IS A FEDERAL COURT MEDIATOR, SITTING ON THE MEDIATION PANEL FOR THE NORTHERN DISTRICT OF CALIFORNIA. PREVIOUSLY, VEENKER SERVED AS ADJUNCT FACULTY MEMBER AT THE UNIVERSITY OF CALIFORNIA'S HASTINGS COLLEGE OF THE LAW AND AT SANTA CLARA UNIVERSITY SCHOOL OF LAW. CURRENTLY, SHE IS A DIRECTOR OF THE LAW FOUNDATION OF SILICON VALLEY.

IN 2002, VEENKER WAS SELECTED AS ONE OF THE "TOP 20 LAWYERS UNDER 40" BY *CALIFORNIA LAW BUSINESS*. SHE HAS BEEN LISTED EACH YEAR SINCE 2001 AS A "HIGHLY RECOMMENDED" INTELLECTUAL PROPERTY ATTORNEY IN SILICON VALLEY BY THE PUBLISHER OF *GLOBAL COUNSEL* MAGAZINE IN CONJUNCTION WITH PRICEWATERHOUSE COOPERS. MS. VEENKER HAS ALSO BEEN RECOGNIZED FOR SEVERAL YEARS AS A NORTHERN CALIFORNIA SUPER LAWYER BY *LAW & POLITICS* AND *SAN FRANCISCO* MAGAZINE.

VEENKER EARNED HER J.D. DEGREE AT THE GEORGETOWN UNIVERSITY LAW CENTER WHERE SHE WAS EDITOR-IN-CHIEF OF THE *JOURNAL OF LAW & TECHNOLOGY*. PRIOR TO ATTENDING LAW SCHOOL, MS. VEENKER WAS AN ASSOCIATE AT THE KETTERING FOUNDATION. SHE HOLDS A B.S. IN BIOCHEMISTRY AND A B.A. IN POLITICAL SCIENCE FROM INDIANA UNIVERSITY.

2009 LEAGUE SCHEDULE

SCHEDULE OVERVIEW

THE 2009 WPS REGULAR SEASON WILL CONSIST OF 70 GAMES AMONG THE SEVEN WPS FRANCHISES FROM MARCH 29-AUGUST 9, 2009 IN A SINGLE TABLE FORMAT CONFORMING TO FIFA AND US SOCCER RULES. THAT WILL BE FOLLOWED BY A THREE-GAME PLAYOFF [SEE POST-SEASON FORMAT] INCLUDING THE WPS FINAL ON AUGUST 22 AND A WPS ALL-STAR GAME AT THE END OF THE SEASON.

TEAMS WILL PLAY A 20-GAME REGULAR SEASON SCHEDULE WITH 10 HOME GAMES AND 10 AWAY GAMES. EACH TEAM WILL PLAY THE OTHER TEAMS IN THE LEAGUE THREE TIMES WITH A FOURTH GAME AGAINST TWO REGIONAL RIVALS TO ROUND OUT THE 20-GAME SCHEDULE. GAMES WILL BE PLAYED MOSTLY ON WEEKENDS WITH 14 GAMES SCHEDULED FOR WEEKNIGHTS, PRIMARILY ON WEDNESDAYS. WEEKNIGHT GAMES WILL NOT BEGIN UNTIL MIDWAY THROUGH THE SEASON ON JUNE 3.

2009 GAME SCHEDULE

SUBJECT TO CHANGE // ALL KICK-OFF TIMES LISTED IN EST

SUNDAY, MARCH 29

WASHINGTON FREEDOM	AT	LOS ANGELES SOL	6 P.M.
--------------------	----	-----------------	--------

SATURDAY, APRIL 4

CHICAGO RED STARS	AT	SAINT LOUIS ATHLETICA	8 P.M.
-------------------	----	-----------------------	--------

SUNDAY, APRIL 5

BOSTON BREAKERS	AT	FC GOLD PRIDE	6 P.M.
LOS ANGELES SOL	AT	SKY BLUE FC	4 P.M.

SATURDAY, APRIL 11

CHICAGO RED STARS	AT	WASHINGTON FREEDOM	6 P.M.
SAINT LOUIS ATHLETICA	AT	BOSTON BREAKERS	7 P.M.
FC GOLD PRIDE	AT	SKY BLUE FC	7:45 P.M.

SATURDAY, APRIL 18

BOSTON BREAKERS	AT	WASHINGTON FREEDOM	7 P.M.
-----------------	----	--------------------	--------

SUNDAY, APRIL 19

FC GOLD PRIDE	AT	LOS ANGELES SOL	4 P.M.
SKY BLUE FC	AT	CHICAGO RED STARS	6 P.M.

SATURDAY, APRIL 25

LOS ANGELES SOL	AT	SAINT LOUIS ATHLETICA	4:30 P.M.
BOSTON BREAKERS	AT	CHICAGO RED STARS	8:30 P.M.

SUNDAY, APRIL 26

WASHINGTON FREEDOM	AT	FC GOLD PRIDE	6 P.M.
--------------------	----	---------------	--------

SATURDAY, MAY 2

LOS ANGELES SOL	AT	BOSTON BREAKERS	7 P.M.
-----------------	----	-----------------	--------

SUNDAY, MAY 3

SAINT LOUIS ATHLETICA	AT	WASHINGTON FREEDOM	6 P.M.
SKY BLUE FC	AT	FC GOLD PRIDE	8 P.M.

SATURDAY, MAY 9

FC GOLD PRIDE	AT	SAINT LOUIS ATHLETICA	8 P.M.
---------------	----	-----------------------	--------

SUNDAY, MAY 10

BOSTON BREAKERS	AT	LOS ANGELES SOL	4 P.M.
SKY BLUE FC	AT	CHICAGO RED STARS	6 P.M.

FRIDAY, MAY 15

SKY BLUE FC	AT	LOS ANGELES SOL	10:30 P.M.
-------------	----	-----------------	------------

SATURDAY, MAY 16

FC GOLD PRIDE	AT	CHICAGO RED STARS	8:30 P.M.
---------------	----	-------------------	-----------

SUNDAY, MAY 17

WASHINGTON FREEDOM	AT	BOSTON BREAKERS	6 P.M.
--------------------	----	-----------------	--------

SATURDAY, MAY 23

SKY BLUE FC	AT	WASHINGTON FREEDOM	5 P.M.
SAINT LOUIS ATHLETICA	AT	CHICAGO RED STARS	8:30 P.M.

SUNDAY, MAY 24

LOS ANGELES SOL	AT	FC GOLD PRIDE	7 P.M.
-----------------	----	---------------	--------

SATURDAY, MAY 30

SAINT LOUIS ATHLETICA	AT	LOS ANGELES SOL	7 P.M.
-----------------------	----	-----------------	--------

SUNDAY, MAY 31

FC GOLD PRIDE	AT	WASHINGTON FREEDOM	4 P.M.
BOSTON BREAKERS	AT	SKY BLUE FC	6 P.M.

WEDNESDAY, JUNE 3

CHICAGO RED STARS	AT	LOS ANGELES SOL	10:30 P.M.
-------------------	----	-----------------	------------

SATURDAY, JUNE 6

SKY BLUE FC	AT	SAINT LOUIS ATHLETICA	8 P.M.
-------------	----	-----------------------	--------

SUNDAY, JUNE 7

WASHINGTON FREEDOM	AT	LOS ANGELES SOL	6 P.M.
CHICAGO RED STARS	AT	FC GOLD PRIDE	8 P.M.

SATURDAY, JUNE 13

CHICAGO RED STARS	AT	WASHINGTON FREEDOM	5 P.M.
LOS ANGELES SOL	AT	SKY BLUE FC	7 P.M.

SUNDAY, JUNE 14

SAINT LOUIS ATHLETICA	AT	BOSTON BREAKERS	6 P.M.
-----------------------	----	-----------------	--------

WEDNESDAY, JUNE 17

FC GOLD PRIDE	AT	BOSTON BREAKERS	7 P.M.
CHICAGO RED STARS	AT	SKY BLUE FC	7 P.M.

SATURDAY, JUNE 20

WASHINGTON FREEDOM	AT	SAINT LOUIS ATHLETICA	8 P.M.
BOSTON BREAKERS	AT	CHICAGO RED STARS	8:30 P.M.

SUNDAY, JUNE 21

FC GOLD PRIDE	AT	LOS ANGELES SOL	6 P.M.
---------------	----	-----------------	--------

WEDNESDAY, JUNE 24

WASHINGTON FREEDOM	AT	BOSTON BREAKERS	7 P.M.
LOS ANGELES SOL	AT	SAINT LOUIS ATHLETICA	8 P.M.

SATURDAY, JUNE 27

CHICAGO RED STARS	AT	LOS ANGELES SOL	3 P.M.
-------------------	----	-----------------	--------

SUNDAY, JUNE 28

SAINT LOUIS ATHLETICA	AT	SKY BLUE FC	6 P.M.
-----------------------	----	-------------	--------

WEDNESDAY, JULY 1

WASHINGTON FREEDOM	AT	CHICAGO RED STARS	8:30 P.M.
--------------------	----	-------------------	-----------

SATURDAY, JULY 4

BOSTON BREAKERS	AT	SKY BLUE FC	7 P.M.
-----------------	----	-------------	--------

SUNDAY, JULY 5

LOS ANGELES SOL	AT	WASHINGTON FREEDOM	6 P.M.
SAINT LOUIS ATHLETICA	AT	FC GOLD PRIDE	8 P.M.

WEDNESDAY, JULY 8

SAINT LOUIS ATHLETICA	AT	LOS ANGELES SOL	3 P.M.
-----------------------	----	-----------------	--------

SUNDAY, JULY 12

SKY BLUE FC	AT	BOSTON BREAKERS	TBD
FC GOLD PRIDE	AT	CHICAGO RED STARS	8 P.M.

WEDNESDAY, JULY 15

WASHINGTON FREEDOM	AT	SKY BLUE FC	7 P.M.
CHICAGO RED STARS	AT	BOSTON BREAKERS	7 P.M.

SATURDAY, JULY 18

SAINT LOUIS ATHLETICA	AT	WASHINGTON FREEDOM	5:30 P.M.
-----------------------	----	--------------------	-----------

SUNDAY, JULY 19

BOSTON BREAKERS	AT	FC GOLD PRIDE	8 P.M.
CHICAGO RED STARS	AT	SKY BLUE FC	TBD

WEDNESDAY, JULY 22

SKY BLUE FC	AT	SAINT LOUIS ATHLETICA	8 P.M.
-------------	----	-----------------------	--------

THURSDAY, JULY 23

LOS ANGELES SOL	AT	FC GOLD PRIDE	10 P.M.
-----------------	----	---------------	---------

SATURDAY, JULY 25

SKY BLUE FC	AT	BOSTON BREAKERS	7 P.M.
-------------	----	-----------------	--------

SUNDAY, JULY 26

WASHINGTON FREEDOM	AT	CHICAGO RED STARS	8 P.M.
FC GOLD PRIDE	AT	SAINT LOUIS ATHLETICA	TBD

WEDNESDAY, JULY 29

BOSTON BREAKERS	AT	WASHINGTON FREEDOM	7 P.M.
-----------------	----	--------------------	--------

SATURDAY, AUGUST 1

WASHINGTON FREEDOM	AT	FC GOLD PRIDE	6 P.M.
BOSTON BREAKERS	AT	SAINT LOUIS ATHLETICA	8 P.M.

SUNDAY, AUGUST 2

LOS ANGELES SOL	AT	CHICAGO RED STARS	6 P.M.
-----------------	----	-------------------	--------

WEDNESDAY, AUGUST 5

FC GOLD PRIDE	AT	SKY BLUE FC	7 P.M.
CHICAGO RED STARS	AT	SAINT LOUIS ATHLETICA	8 P.M.

SATURDAY, AUGUST 8

SKY BLUE FC	AT	WASHINGTON FREEDOM	TBD
-------------	----	--------------------	-----

SUNDAY, AUGUST 9

SAINT LOUIS ATHLETICA	AT	FC GOLD PRIDE	6 P.M.
LOS ANGELES SOL	AT	BOSTON BREAKERS	4 P.M.

PLAYOFFS, FIRST ROUND - AUGUST 15

No. 4	AT	No. 3	TBD
-------	----	-------	-----

PLAYOFFS, SUPER SEMIFINAL - AUGUST 18/19

FIRST ROUND WINNER	AT	No. 2	TBD
--------------------	----	-------	-----

PLAYOFFS, WPS FINAL - AUGUST 22

SUPER SEMIFINAL WINNER	AT	No. 1	TBD
------------------------	----	-------	-----

Congratulations WPS on Your Inaugural Season!



Insurance • Risk Management • Wealth Management Services

For insurance services, contact:

Jonathan Axel • jon.axel@hubinternational.com • 310-568-5934

www.hubinternational.com

At your service in all 50 United States and the provinces and territories of Canada.

FOX SOCCER CHANNEL

WPS SUNDAY ON FSC

WOMEN'S PROFESSIONAL SOCCER AND FOX SOCCER CHANNEL, AMERICA'S PREMIER SOCCER NETWORK, HAVE A MULTI-YEAR PARTNERSHIP TO TELEVISION A LIVE NATIONAL SUNDAY NIGHT WPS GAME OF THE WEEK, BEGINNING THE 2009 INAUGURAL SEASON CALLED "WPS SUNDAY ON FSC".



THE AGREEMENT COVERS A MINIMUM OF 20 GAMES OVER THE COURSE OF THE REGULAR SEASON AND THREE PLAYOFF GAMES. ONE POSTSEASON MATCH ON AUG. 18/19 AND THE WPS ALL-STAR GAME WILL BE BROADCAST ON FOX SOCCER CHANNEL, WHILE ONE POST-SEASON MATCH ON AUGUST 15 AND THE WPS FINAL ON AUGUST 22 WILL REACH OVER 80 MILLION HOMES ON FOX SPORTS NET'S OWNED AND AFFILIATED REGIONAL SPORTS NETWORKS. FOX SOCCER CHANNEL'S COVERAGE FEATURES WPS PRE-GAME AND POST-GAME SHOWS AND WPS ROUND-UP SEGMENTS ON FOX SOCCER REPORT, PLUS CONTENT SHARING ACROSS WOMENSPROSOCCER.COM AND FOXSOCCER.COM.

FOX SOCCER CHANNEL OFFERS THE MOST COMPREHENSIVE COVERAGE OF WORLD-CLASS SOCCER AVAILABLE IN THE UNITED STATES, INCLUDING MAJOR LEAGUE SOCCER, ENGLAND'S BARCLAYS PREMIER LEAGUE, ITALY'S SERIE A, THE ARGENTINE FIRST DIVISION AND AUSTRALIAN HYUNDAI A-LEAGUE, AS WELL AS SUCH GLOBAL TOURNAMENTS AS THE UEFA CUP, ENGLISH FA CUP, FIFA CLUB WORLD CUP, CONCACAF CHAMPIONS LEAGUE™, CONCACAF GOLD CUP™ AND 2010 FIFA WORLD CUP™ QUALIFIERS. AS THE OFFICIAL BROADCAST PARTNER OF THE UNITED STATES YOUTH SOCCER ASSOCIATION, FOX SOCCER CHANNEL ALSO TELEVISIONS THE UNITED SOCCER LEAGUES AND NCAA DIVISION I COLLEGE MEN'S AND WOMEN'S SOCCER.

THE NIELSEN-RATED CHANNEL REACHES MORE THAN 34 MILLION CABLE AND SATELLITE HOUSEHOLDS IN THE U.S. AND CARIBBEAN. TO SUBSCRIBE TO FOX SOCCER CHANNEL, CONTACT YOUR LOCAL CABLE OR SATELLITE PROVIDER, OR VISIT [HTTP://WWW.FOXSOCCER.CHANNELFINDER.NET/START.ASP](http://www.foxsoccer.channelfinder.net/start.asp).

2009 FSC TV SCHEDULE

SUBJECT TO CHANGE // ALL KICK-OFF TIMES LISTED IN ET

DATE	AWAY TEAM	HOME TEAM	TIME (ET)
MARCH 29	WASHINGTON FREEDOM	LOS ANGELES SOL	6 P.M.
APRIL 5	BOSTON BREAKERS	FC GOLD PRIDE	6 P.M.
APRIL 11	CHICAGO RED STARS	WASHINGTON FREEDOM	6 P.M.
APRIL 19	SKY BLUE FC	CHICAGO RED STARS	6 P.M.
APRIL 26	WASHINGTON FREEDOM	FC GOLD PRIDE	6 P.M.
MAY 3	SAINT LOUIS ATHLETICA	WASHINGTON FREEDOM	6 P.M.
MAY 17	WASHINGTON FREEDOM	BOSTON BREAKERS	6 P.M.
MAY 24	LOS ANGELES SOL	FC GOLD PRIDE	7 P.M.
MAY 31	BOSTON BREAKERS	SKY BLUE FC	6 P.M.
JUNE 7	WASHINGTON FREEDOM	LOS ANGELES SOL	6 P.M.
JUNE 14	SAINT LOUIS ATHLETICA	BOSTON BREAKERS	6 P.M.
JUNE 21	FC GOLD PRIDE	LOS ANGELES SOL	6 P.M.
JUNE 28	SAINT LOUIS ATHLETICA	SKY BLUE FC	6 P.M.
JULY 5	LOS ANGELES SOL	WASHINGTON FREEDOM	6 P.M.
JULY 12	SKY BLUE FC	BOSTON BREAKERS	TBD
JULY 19	CHICAGO RED STARS	SKY BLUE FC	TBD
JULY 26	FC GOLD PRIDE	SAINT LOUIS ATHLETICA	TBD
AUGUST 2	LOS ANGELES SOL	CHICAGO RED STARS	6 P.M.
AUGUST 9	SAINT LOUIS ATHLETICA	FC GOLD PRIDE	6 P.M.

EVERY WEEK, LIVE AND EXCLUSIVE!



WPS SUNDAY on FSC



FOR A COMPLETE TELECAST SCHEDULE,
VISIT FOXSOCCER.COM on *msn*.

LIVE IT HERE

WPS POSTSEASON FORMAT

WPS PLAYOFFS

WOMEN'S PROFESSIONAL SOCCER (WPS) HAS BLENDED TRADITIONAL SOCCER CULTURE AND AMERICAN PLAYOFF TRADITION TO CREATE A UNIQUE POST-SEASON FORMAT. APPROVED BY THE BOARD OF GOVERNORS AT THE NSCAA CONVENTION ON JANUARY 15, 2009, THE PLAYOFFS ARE EXPECTED TO AIR IN 80 MILLION HOMES NATIONALLY ON FOX SPORTS NET'S OWNED AND AFFILIATED REGIONAL SPORTS NETWORKS.

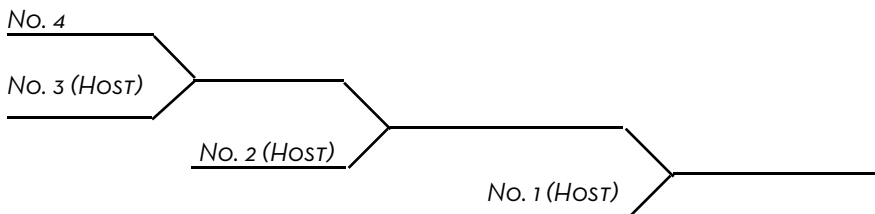
THE PLAYOFF FORMAT WILL FEATURE FOUR TEAMS AND HEAVILY REWARD THE WPS TEAM FINISHING ATOP THE 2009 REGULAR SEASON SCHEDULE, TITLING THEM *WPS REGULAR SEASON CHAMPIONS* AND AUTOMATICALLY PLACING THEM AS HOST AND PARTICIPANT IN THE *WPS FINAL*, THE LEAGUE'S CHAMPIONSHIP GAME.

TEAMS FINISHING THE REGULAR SEASON AS NO. 3 AND NO. 4 WILL FACE EACH OTHER AT NO. 3'S STADIUM ON AUGUST 15 FOR THE *FIRST ROUND*. THE SECOND PLACE TEAM IN THE REGULAR SEASON WILL RECEIVE A BYE INTO THE *SUPER SEMIFINAL* AND HOST THE WINNER OF THE *FIRST ROUND* ON AUGUST 18/19. THE WINNER OF THE *SUPER SEMIFINAL* WILL THEN TRAVEL TO THE TOP-SEEDED TEAM FOR THE *WPS FINAL* ON AUGUST 22.

UNIQUE LEAGUE TROPHIES WILL RECOGNIZE THE TEAMS THAT WIN THE REGULAR SEASON AND WPS FINAL.

WPS PLAYOFF FORMAT

<i>FIRST ROUND</i> AUG 15	<i>SUPER SEMIFINAL</i> AUG 18/19	<i>WPS FINAL</i> AUG 22	<i>WPS CHAMPION</i>
------------------------------	-------------------------------------	----------------------------	---------------------



WPS RULES

CONDENSED RULES AND REGULATIONS OF THE GAME

RULE 1: THE FIELD OF PLAY

WPS FIELDS WILL HAVE A MINIMUM WIDTH OF 68 YARDS AND A MINIMUM LENGTH OF 110 YARDS

RULE 2: NUMBER OF PLAYERS

EACH TEAM CONSISTS OF 11 PLAYERS, INCLUDING A GOALKEEPER.

RULE 3: PLAYER EQUIPMENT

A PLAYER'S UNIFORM CONSISTS OF A SHIRT, SHORTS, SOCKS, SHIN GUARDS AND SHOES. THE GOALKEEPER WEARS COLORS THAT DISTINGUISH THEM FROM THE OTHER PLAYERS AND REFEREES

RULE 4: REFEREES

ONE REFEREE, TWO REFEREE ASSISTANTS AND A FOURTH OFFICIAL ARE APPOINTED BY U.S. SOCCER FOR EACH MATCH. THE REFEREE MAINTAINS CONTROL OF THE GAME AND HIS/HER DECISIONS REGARDING FACTS CONNECTED TO PLAY ARE FINAL.

RULE 5: DURATION OF PLAY

THE MATCHES CONSIST OF TWO 45-MINUTE PERIODS. IF A REGULAR SEASON MATCH IS TIED AFTER 90 MINUTES, THE GAME IS DECLARED A TIE. ALLOWANCE FOR TIME LOST BY SUBSTITUTIONS, ASSESSMENT OF INJURED PLAYERS, REMOVAL OF INJURED PLAYERS, OR ANY OTHER CAUSE IS AT THE SOLE DISCRETION OF THE REFEREE.

RULE 6: THE START OF PLAY

A COIN TOSS DECIDES WHICH TEAM WILL KICK OFF. EACH TEAM MUST BE IN ITS OWN HALF AND THE DEFENDING PLAYERS MUST BE AT LEAST 10 YARDS FROM THE BALL UNTIL IT IS PLAYED. AFTER A GOAL, THE TEAM SCORED UPON RESTARTS PLAY BY KICKING OFF. AFTER HALFTIME, THE TEAMS CHANGE ENDS AND THE OPPOSITE TEAM TO THAT WHICH STARTED THE GAME KICKS OFF.

RULE 7: BALL IN AND OUT OF PLAY

THE BALL IS OUT OF PLAY WHEN IT HAS WHOLLY CROSSED OVER THE GOAL LINE, TOUCHLINE, OR IF THE REFEREE HAS STOPPED THE GAME. AT ALL OTHER TIMES, THE BALL IS IN PLAY.

RULE 8: THROW IN

WHEN THE BALL HAS WHOLLY CROSSED THE TOUCHLINE, IT IS PUT BACK IN PLAY BY A THROW-IN FROM THE SPOT IT WENT OUT AND BY A PLAYER FROM THE OPPOSING TEAM TO THE PLAYER WHO LAST TOUCHED THE BALL.

RULE 9: METHOD OF SCORING

A GOAL OCCURS WHEN THE WHOLE OF THE BALL HAS PASSED OVER THE GOAL LINE, BETWEEN THE GOAL POSTS AND UNDER THE CROSSBAR, WHETHER ON THE GROUND OR IN THE AIR.

RULE 10: OFFSIDE

A PLAYER IS OFFSIDE IF SHE IS NEARER TO HER OPPONENT'S GOAL LINE THAN BOTH THE BALL AND THE SECOND LAST OPPONENT.

RED CARD AND YELLOW CARD SUSPENSION POLICY

RED CARD AND YELLOW CARD ACCUMULATION SUSPENSIONS COLLECTED DURING WPS SEASON GAMES WILL BE SERVED IN THE TEAM'S NEXT WPS SEASON GAME. SUSPENSIONS FOR RED CARDS AND ACCUMULATED YELLOW CARDS WILL CARRY OVER TO PLAYOFF GAMES. SUSPENSIONS EARNED IN AN EXHIBITION GAME WILL BE SERVED IN THE NEXT EXHIBITION GAME. ANY SUSPENSION FOR A RED CARD DURING PLAYOFF GAMES THAT WOULD OTHERWISE BE SERVED AFTER THE TEAM'S LAST WPS SEASON GAME WILL CARRY OVER TO THE FIRST GAME OF THE NEXT WPS SEASON. FOR ANY SUSPENSION DUE TO A RED CARD OR YELLOW CARD, THE PLAYER WILL CONTINUE TO RECEIVE HER PAY, NOTWITHSTANDING ANY FINE WHICH MAY BE IMPOSED IN CONNECTION WITH SUCH INFRACTION.

RED CARD

INFRACTIONS FOR WHICH A PLAYER WILL RECEIVE A RED CARD:

- A. IS GUILTY OF A SERIOUS FOUL PLAY. (SFP)
- B. IS GUILTY OF VIOLENT CONDUCT. (VC)
- C. SPITS AT AN OPPONENT OR ANY OTHER PERSON. (S)
- D. DENIES AN OPPONENT A GOAL OR AN OBVIOUS GOAL-SCORING OPPORTUNITY BY DELIBERATELY HANDLING THE BALL. (DGH)
- E. DENIES AN OBVIOUS GOAL-SCORING OPPORTUNITY TO AN OPPONENT MOVING TOWARDS THE PLAYER'S GOAL BY AN OFFENSE PUNISHABLE BY A FREE KICK OR PENALTY KICK. (DGF)
- F. USES OFFENSIVE, INSULTING OR ABUSIVE LANGUAGE. (AL)
- G. RECEIVES A SECOND CAUTION (YELLOW CARD) IN THE SAME MATCH. (2CT)

RED CARD ACCUMULATION

RED CARDS AND SUSPENSIONS WILL BE LEVIED FOR ALL WPS GAMES (INCLUDING EXHIBITIONS). PLAYERS WHO RECEIVE A SECOND YELLOW CARD IN ANY SINGLE GAME ARE DEEMED TO HAVE RECEIVED A RED CARD. ANY PLAYER WHO RECEIVES A RED CARD DURING ANY WPS GAME WILL ALSO BE SUBJECT TO THE FOLLOWING:

- A. FOR A FIRST OFFENSE: SUSPENSION FOR THE REMAINDER OF THE GAME IN WHICH THE INFRACTION OCCURRED AND, AT LEAST, THE NEXT WPS SEASON (OR EXHIBITION) GAME;
- B. FOR A SECOND OFFENSE IN ANY WPS SEASON (OR IN THE CASE OF EXHIBITION GAMES IN ANY CALENDAR YEAR): A FINE OF \$250 AND SUSPENSION FOR THE REMAINDER OF THE GAME IN WHICH THE INFRACTION OCCURRED AND, AT LEAST, THE NEXT WPS SEASON (OR EXHIBITION) GAME;
- C. FOR THE THIRD OFFENSE IN ANY WPS SEASON, (OR IN THE CASE OF EXHIBITION GAMES IN ANY CALENDAR YEAR): A FINE OF \$500, SUSPENSION FOR THE REMAINDER OF THE GAME IN WHICH THE INFRACTION OCCURRED AND, AT LEAST, THE NEXT WPS SEASON (OR EXHIBITION) GAME, PLUS ADDITIONAL SANCTIONS AT THE DISCRETION OF THE LEAGUE.

YELLOW CARD

INFRACTIONS FOR WHICH A PLAYER WILL RECEIVE A YELLOW CARD:

- A. UNSPORTING BEHAVIOR. (UB)
- B. SHOWS DISSENT BY WORD OR ACTION. (DT)
- C. PERSISTENTLY INFRINGES THE LAWS OF THE GAME. (PI)
- D. DELAYS THE RESTART OF PLAY. (DR)
- E. FAILS TO RESPECT THE REQUIRED DISTANCE WHEN PLAY IS RESTARTED WITH A CORNER KICK OR FREE KICK OR THROW-IN. (FRD)
- F. ENTERS OR RE-ENTERS THE FIELD OF PLAY WITHOUT THE REFEREE'S PERMISSION. (E)
- G. DELIBERATELY LEAVES THE FIELD OF PLAY WITHOUT THE REFEREE'S PERMISSION. (L)

YELLOW CARD ACCUMULATION

WPS HAS DEVELOPED A YELLOW CARD ACCUMULATIONS SYSTEM TO DETERMINE SUSPENSIONS BY YELLOW CARD INFRACTIONS, OTHERWISE KNOWN AS CAUTIONABLE INFRACTIONS, WITH THE FIRST ONE (1) GAME SUSPENSION OCCURRING AFTER A PLAYER HAS ACCUMULATED 2 YELLOW CARDS IN THE SAME GAME RESULTING IN ONE (1) RED AND A GAME DISMISSAL. FOR PLAYERS ACCUMULATING YELLOW CARDS THE FOLLOWING ACTION IS IN PLACE:

1. THREE YELLOW CARDS TO A SINGLE PLAYER IN THREE CONSECUTIVE GAMES PLAYED WILL RESULT IN THAT PLAYER BEING SUSPENDED FOR THE NEXT MATCH.
2. FOUR YELLOW CARDS TO A SINGLE PLAYER (NONCONSECUTIVE) ACCUMULATED WILL RESULT IN THAT PLAYER BEING SUSPENDED FOR THE NEXT MATCH.
3. A SUBSEQUENT THREE CARDS (TOTAL OF 7) BY THE SAME PLAYER ACCUMULATED THROUGHOUT THE SEASON WILL RESULT IN THREE MATCHES SUSPENSION AND FINE (TBD).
4. IF THERE IS A THIRD INCIDENT OF THREE CARDS (10) BY THE SAME PLAYER THAT PLAYER WILL SIT OUT A TOTAL OF FIVE MATCHES AND BE IMPOSED A FINE (TBD).

YELLOW CARD ACCUMULATION FOR PLAYOFF GAMES

A LIST OF PLAYERS IN JEOPARDY OF NOT BEING ABLE TO PARTICIPATE IN THE PLAYOFFS DUE TO THE MAXIMUM NUMBER YELLOW CARDS EARNED WILL BE AVAILABLE THROUGHOUT THE SEASON. THIS LIST WILL BE PRESENTED TO TEAMS IN ADVANCE OF THE PLAYOFFS.

1. PLAYERS THAT ACCUMULATE THEIR FOURTH (4) YELLOW CARD AND/OR ARE AWARDED THEIR THIRD YELLOW CARD IN THREE CONSECUTIVE GAMES WILL BE SUBJECT TO A ONE GAME SUSPENSION DURING THE PLAYOFFS.
2. PLAYERS THAT RECEIVE RED CARDS DURING THE PLAYOFFS MAY BE ASSESSED A FINE AND SERVE AT LEAST A ONE GAME SUSPENSION FROM THEIR NEXT PLAYOFF GAME.
3. PLAYERS THAT PLAY ANY LENGTH OF TIME IN FOUR (4) GAMES WITHOUT A YELLOW OR RED CARD WILL BE CLEARED FROM ACCUMULATED LIST AND RECORDED AT ZERO (0), INCLUDING GOING FROM SEASONAL GAMES TO PLAYOFF GAMES.

2009 WPS U.S. SOCCER REFEREE POOL

<i>REFEREES</i>	<i>CITY</i>	<i>STATE</i>
BENNETT, JENNIFER L	FOSTER CITY	CA
BRITO, VERONICA	NEW ORLEANS	LA
BUTLER, SHANE	IMPERIAL	MO
DOMKA, MARGARET	MILWAUKEE	WI
MALHIWSKY, DALLAS	OMAHA	NE
MARISCAL, FELISHA	CHULA VISTA	CA
RADFORD, DANIEL	LONG BEACH	CA
RIVERO, JOSE CARLOS	ELMSEFORD	NY
ROSLUND, BRYAN	SILVER SPRING	MD
SEITZ, KARI	SAN MATEO	CA
SERAFINI, SANDRA	BAHAMA	NC
UNKEL, TED	SARASOTA	FL
WEST, KRISTINE	RICHFIELD	MN
<i>ASSISTANT REFEREES</i>	<i>CITY</i>	<i>STATE</i>
ANDERSON, IAN	SANTA BARBARA	CA
ARBLASTER, COLIN	SACRAMENTO	CA
BRUGMAN, ADAM	SAN DIEGO	CA
COLEMAN, DEBBIE	ABINGDON	MD
COPE, ALLYSE	SANTA CRUZ	CA
CORTES, VICENTE	PIEDMONT	CA
DELLAVIA, DONALD	CHICAGO	IL
DUFFY, MARLENE	HUNTINGTON BEACH	CA
DZIEDZIC, KATHERINE (KATE)	DURHAM	NC
HACKETT, MOO	ASHBURN	VA
IBANEZ, CHRISTINA	CAPE CORAL	FL
JOHNSON, MELANIE	TAYLORS	SC
KAMPMEINERT, MIKE	SACRAMENTO	CA
KREITZER, MATTHEW	JESSUP	MD
LAUDANI, MAURIZIO	MILPITAS	CA
MAGQUIRK, DANIELLE	GIBBSTOWN	NJ
MIGUEL, TERESA	HAMDEN	CT
PANDURO, MIGUEL	CHICAGO	IL
PEREZ, VERONICA	SACRAMENTO	CA
POPLSTEIN, SHANNON	CHESAPEAKE	VA
QUAN, DELEANA E	SACRAMENTO	CA
SCHMITZ, JOHN E	HERNDON	VA
TOTH, STEPHANIE	ROLLING MEADOWS	IL
WILLING, AMY	LANSING	MI

LIST OF WPS MATCH OFFICIALS ACCURATE AS OF MARCH 10, 2009

WPS CAMPS

WOMEN'S PROFESSIONAL SOCCER (WPS) AND UK SOCCER CAMPS (UKISC) HAVE AN EXCLUSIVE MULTI-YEAR PARTNERSHIP MAKING UKISC THE OFFICIAL CAMP PROVIDER OF WPS WITH A MAXIMUM OF 22 LOCATIONS IN 2009 TO BE DESIGNATED AS "WPS CAMPS."

WPS CAMPS WILL FEATURE A VARIETY OF WEEKLY CAMP OPTIONS FOR VARIOUS AGE GROUPS IN OVER 20 MARKETS ACROSS THE COUNTRY WITH THE MISSION OF PROVIDING "THE BEST POSSIBLE SOCCER EXPERIENCE." THE CAMPS WILL INCLUDE CHALLENGING AND DYNAMIC TRAINING ENVIRONMENTS, WHILE ALLOWING PLAYERS TO PERSONALLY EXPERIENCE WHAT IT TAKES TO PLAY IN THE PROS FROM THE PROS. CAMPS WILL INCLUDE PLAYER APPEARANCES FROM THE STARS OF THE NEW LEAGUE AT EVERY CAMP.

IN AREAS WHERE WPS DOES NOT HAVE FRANCHISES, THE LEAGUE WILL PARTNER WITH UK INTERNATIONAL TO BRING THE WPS EXPERIENCE TO NEIGHBORHOOD SOCCER FIELDS AND COMMUNITIES WITH A VARIETY OF CAMP OPTIONS.

FOR MORE INFORMATION, GO TO WWW.WOMENSPROSOCCER.COM/CAMPS.ASPX.

Did someone say Soccer!?

These are just a few member perks...

Participant and Liability Insurance Coverage

Referee Support

Coaching Support

Player's Rights-Fair Play

National Cup Programs

Centralized Communication



Sign up for our free online newsletter! www.usasa.com to register today!



Official Caterer

O F T H E W A S H I N G T O N F R E E D O M



www.rrcatering.com

C O R P O R A T E B A R B E C U E S • O F F I C E L U N C H E O N S • G A L A E V E N T S



MEDIA INFORMATION

MEDIA INFORMATION

WASHINGTON FREEDOM COMMUNICATIONS DEPARTMENT

JIM HIGGINS

DIRECTOR OF COMMUNICATIONS

OFFICE: 240-449-1613

CELL: 443-926-2513

EMAIL: JIM.HIGGINS@WASHINGTONFREEDOM.COM

GAME DAY INFORMATION AND GUIDELINES

CREDENTIALS

FULL SEASON MEDIA CREDENTIAL REQUEST FORMS ARE AVAILABLE THROUGH THE FREEDOM'S COMMUNICATIONS DEPARTMENT. SINGLE-GAME CREDENTIAL REQUESTS SHOULD BE MADE THROUGH THE COMMUNICATIONS DEPARTMENT AT LEAST 48 HOURS IN ADVANCE OF THE REQUESTED GAME DAY. SINGLE GAME CREDENTIALS MAY BE PICKED UP AT MEDIA WILL CALL, LOCATED ON THE SOUTH SIDE OF THE DISCOVERY SPORTS CENTER ON THE DAY OF GAME.

THE WASHINGTON FREEDOM MAKES EVERY EFFORT TO ACCOMMODATE ALL REASONABLE MEDIA CREDENTIAL REQUESTS. PLEASE REMEMBER ALL CREDENTIALS ARE FOR WORKING MEDIA MEMBERS ONLY, ARE NON-TRANSFERRABLE AND ARE NOT TO BE USED FOR ACCESS TO PUBLIC SEATING. ANY UNAUTHORIZED USE WILL SUBJECT BEARER TO EJECTION FROM THE MARYLAND SOCCERPLEX AND CONFISCATION OF THE CREDENTIAL. CREDENTIALS PROVIDE ACCESS TO AREAS OF THE MARYLAND SOCCERPLEX DESIGNATED ON EACH PASS.

NOTE: AUTOGRAPH SOLICITATION WILL RESULT IN CONFISCATION OF THE CREDENTIAL. MEMBERS OF THE WORKING PRESS ARE NOT ALLOWED TO COLLECT AUTOGRAPHS AND CREDENTIALS ARE REVOCABLE LICENSES WHICH MAY BE WITHDRAWN, AND ADMISSION REFUSED, AT ANY TIME.

PARKING

ACCREDITED MEDIA PARKING WILL BE AVAILABLE IN THE PARKING LOT ON THE SOUTH SIDE OF THE DISCOVERY SPORTS CENTER BY PERMIT. THE LOT OPENS 2 HOURS PRIOR TO KICKOFF AND THE PERMIT MUST BE VISIBLE AT ALL TIMES WHILE IN THE LOT.

PRESS BOX

DUE TO LIMITED SEATING, MEMBERS OF THE MEDIA WITH FULL SEASON CREDENTIALS WILL BE GIVEN FIRST PRIORITY FOR SEATING INSIDE THE PRESS BOX. DEPENDING ON DEMAND, EXTRA SEATING MAY BE PROVIDED.

WIRELESS

AS A COURTESY, THE FREEDOM WILL PROVIDE WIRELESS INTERNET ACCESS FREE OF CHARGE FOR WORKING MEMBERS OF THE MEDIA.

FOOD & BEVERAGE

A PRE-GAME MEAL WILL BE AVAILABLE TO ALL CREDENTIALLED MEMBERS OF THE MEDIA STARTING 2 HOURS BEFORE KICKOFF.

POST GAME PROCEDURES

WPS HAS ADOPTED A LEAGUE-WIDE POLICY THAT THE MEDIA WILL BE ALLOWED ACCESS TO PLAYERS AND COACHES FOR INTERVIEWS IN A DESIGNATED MIX ZONE AREA 10 MINUTES AFTER THE CONCLUSION OF THE GAME. THE FREEDOM MIX ZONE WILL BE BEHIND THE SOUTH GOAL.

WITH 10 MINUTES LEFT IN THE MATCH THE MEDIA WILL BE POLLED TO FIND OUT WHICH PLAYERS FROM BOTH TEAMS THEY WISH TO SPEAK TO. ONCE PLAYERS FINISH WARMING DOWN AFTER THE MATCH, THEY WILL BE BROUGHT TO THE MIX ZONE FOR MEDIA INTERVIEWS.

GENERAL INFORMATION

PHOTOGRAPHY REQUESTS

ISIPHOTOS.COM (BY INTERNATIONAL SPORTS IMAGES, INC.) IS THE OFFICIAL PHOTOGRAPHY SUPPLIER OF WOMEN'S PROFESSIONAL SOCCER. ISI HAS CREATED A FREE DOWNLOAD SITE TO FACILITATE THE DISTRIBUTION OF WPS HEADSHOTS, LOGOS, AND SELECT ACTION PHOTOS FOR MEDIA USE ONLY. ALL IMAGES ARE HIGH RESOLUTION SUITABLE FOR PRINT AND WEB. THE SITE IS LOCATED AT: [HTTP://MEDIA.ISIPHOTOS.COM](http://media.isiphotos.com). PLEASE CONTACT YOUR TEAM MEDIA DIRECTOR FOR A SITE PASSWORD, OR EMAIL: [INFO@ISIPHOTOS.COM](mailto:info@isiphotos.com).

FOR ACCESS TO THE FULL WPS IMAGE DATABASE AT [WWW.ISIPHOTOS.NET](http://www.isiphotos.net), SEASON SUBSCRIPTION PACKAGES ARE AVAILABLE STARTING AT \$200/MONTH. IMAGES CAN ALSO BE PURCHASED INDIVIDUALLY USING A CREDIT CARD. FOR MORE INFORMATION, PLEASE CONTACT [INFO@ISIPHOTOS.COM](mailto:info@isiphotos.com).

PRACTICE

THE OFFICIAL TRAINING SITE OF THE WASHINGTON FREEDOM IS THE MARYLAND SOCCERPLEX. THE TEAM WILL GENERALLY TRAIN AT THE CHAMPIONSHIP STADIUM ON THE DAY PRIOR TO A HOME MATCH. ALL PRACTICE TIMES ARE TENTATIVE AND SUBJECT TO CHANGE. MEMBERS OF THE MEDIA SHOULD CONTACT THE FREEDOM PRIOR TO ATTENDING A PRACTICE TO MAKE SURE PLAYERS AND COACHES ARE AVAILABLE FOR INTERVIEWS ONCE PRACTICE HAS CONCLUDED.

NOTE: FOR INFORMATION ON SCHEDULING INTERVIEWS WITH VISITING PLAYERS, PLEASE CONTACT THE FREEDOM COMMUNICATIONS DEPARTMENT.

INTERVIEW REQUESTS

THE WASHINGTON FREEDOM COMMUNICATIONS DEPARTMENT MAKES EVERY REASONABLE ATTEMPT TO FULFILL INTERVIEW REQUESTS. MEMBERS OF THE MEDIA WISHING TO TALK WITH FREEDOM PLAYERS, COACHES AND STAFF SHOULD CONTACT THE COMMUNICATIONS DEPARTMENT TO ARRANGE INTERVIEWS. PLAYER PHONE NUMBERS ARE PRIVATE AND WILL NOT BE GIVEN TO MEMBERS OF THE MEDIA. PLEASE DO NOT EXPECT PLAYERS TO BE AVAILABLE FOR INTERVIEWS IF YOU HAVE NOT MADE PRIOR ARRANGEMENTS.

2009 WASHINGTON



1-BRIANA
SCURRY



3-JILL
GILBEAU



4-CAT
WHITEHILL



5-JOANNA
LOHMAN



10-HOMARE
SAWA



11-EMILY
JANSS



14-SARAH
HUFFMAN



15-KRISTEN
DEDYCKER



21-ALEX
SINGER



22-BECKY
SAUERBRUNN



24-CHRISTEN
KARNISKI

FREEDOM ROSTER



6-LORI
LINDSEY



7-PARRISSA
EYOROKON



8-SONIA
BOMPASTOR



9-ALLIE
LONG



17-LISA
DE VANNA



18-ERIN
MCLEOD



19-REBECCA
MOROS



20-ABBY
WAMBACH



25-CLAIRE
ZIMNECK



26-MADISON
KELLER



61-KATI JO
SPISAK



It's good to have access to a network of
NATIONALLY RANKED SPECIALISTS.
It's even better when they're
RIGHT AROUND THE CORNER.

Nationally recognized cardiac program, ranked top 25 in the U.S.

The only dedicated children's hospital in Northern Virginia.

The only two Primary Stroke Centers in Northern Virginia.

Two of our hospitals boast "Magnet" nursing status, the highest designation for nursing care.

Inova Fairfax Hospital named one of "America's 50 Best Hospitals" in 2008 and 2009 by HealthGrades.®

The people of our region deserve the finest care in the nation. It's this core belief that inspires our relentless pursuit of new talent, new techniques, new technologies. And it has made our care what it is today. Enter any one of our facilities and be connected to a network of phenomenal expertise. At Inova, this is our commitment to you: The care will be world-class. And it will be close by. Another way we express our commitment? Helping our patients get healthy so they can get back to living their lives. And then some.



inova.org | 703.750.8800



EXCELLENCE
IN TRAVEL

Let Us Take You There

Proud Sponsor of the

Washington Freedom

*Family Owned and Operated
for over 60 Years.*

- Travel Agency
- Motorcoach Charters
- Group Tours
- Retail Tours



www.eyre.com • 800-321-EYRE

SEE
EXTRAORDINARY™



womensprosoccer.com