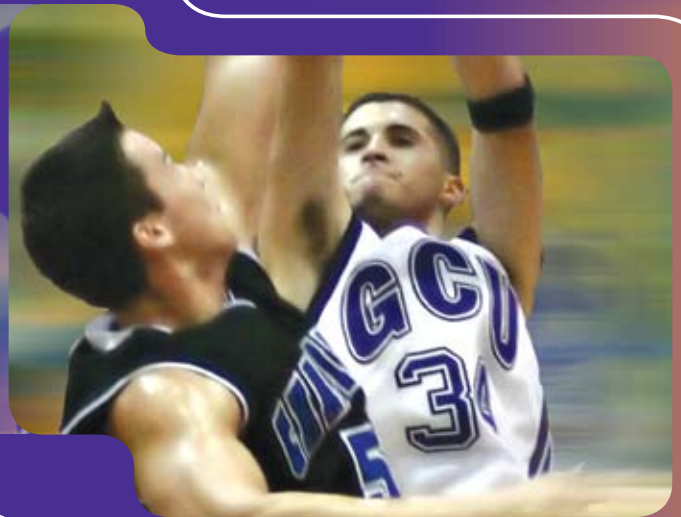




2005-06
MEN'S
BASKETBALL
GRAND CANYON UNIVERSITY



MEDIA GUIDE. PHOENIX. ARIZONA.
WWW.GCU.NET



**2005-06
MEN'S
BASKETBALL**

MEDIA GUIDE. PHOENIX. ARIZONA.





CANYON

Table of Contents

2005-06 Schedule..... BC
 Credits 1
 Quick Facts..... 2
 Media Information 2
 Media Outlets 2

COACHING STAFF 3
 Scott Mossman 4

Assistant Coaches:
 Bruce Haroldson 5
 Matt Spivey 5
 Casey Weitzel 5

ANTELOPE GYMNASIUM..... 6

THE PLAYERS..... 7
 2005-06 Team Roster/Picture 8
 2005-06 Season Outlook 9

Returning Player Profiles:
 Noe Alonzo 10
 Ryan Nelson..... 11
 Bryan Lee..... 12
 Andray Glenn..... 12
 Mike Grothaus..... 12

New Players..... 13

2004-05 REVIEW/HISTORY 15
 2004-05 Season Statistics..... 16
 2004-05 Season Results 17
 MaCaffrey Classic..... 18
 GCU Record Book 20
 All-Time Letterwinners..... 22
 All-Time Series vs Opponent 25
 From Canyon to the NBA..... 27
 Living Legacy: Brazell Tribute 28
 NCAA Centennial Celebration ... 30
 Athletics Staff..... 32

ABOUT GCU 33

GCU DEPARTMENT OF INTERCOLLEGIATE ATHLETICS MISSION..... 37

CREDITS

Grand Canyon University Basketball Guides are produced by Vincent Briedis, Director of Sports Information (BA '01, MBA '06), contributions provided by the GCU Marketing Department. Photography by Shaun Erickson, Additional Photography by Steve Lamb and Vincent Briedis. Printing by Buse Printing and Packaging.



Quick-Facts:

3300 W Camelback Rd
Phoenix, AZ 85017
800.800.9776
www.gcu.net

Enrollment: 5,784

Affiliation: NCAA Division II

Conference: Independent

Facility: Antelope Gymnasium
(Capacity: 2,000)

Colors: Purple/Black/White

Nickname: Antelopes ('Lopes)

Chief Executive Officer:

Brent Richardson

Athletic Director:

B. Keith Baker (602.589.2816)

Director of Sports Information:

Vincent Briedis

Phone: 602.589.2795

Fax: 602.589.2015

Men's Basketball Head Coach:

Scott Mossman, 8th year

Phone: 602.589.2818

Assistant Coaches:

Bruce Haroldson, 2nd year

Phone: 602.589.2815

Matt Spivey, 1st year

Phone: 602.589.2815

Casey Weitzel, 1st year

Phone: 602.589.2815

Media Outlets:

NEWSPAPERS

The Arizona Republic

200 E Van Buren St.
Phoenix, AZ 85004

602.444.2222

Fax: 444.8295

sports@arizonarepublic.com

Jeremy Cluff, Beat

Mark Faller, Sports Editor

Buckeye Valley News

623.386.4426

Fax: 386.4427

Canyon Echoes

602.589.2569

Fax: 623.298.5520

sportseditor@gcu.edu

Daily News-Sun

(Sun City)

623.977.8351

Fax: 876.3698

Glendale Star/

Peoria Times

623.847.4614

Fax: 842.6017

Mesa Tribune

480.898.6525

Fax: 898.5665

Scottsdale Progress

Tribune

480.970.2346

Fax: 970.2360

SunCities

Arrowhead Ranch

(Independent)

623.972.6101

Fax: 974.6004

West Valley View

(Avondale)

623.932.5555

Fax: 935.2103

RADIO

KMVP 860

(ESPN Radio)

602.274.6200

Fax: 266.3858

XTRA 910

602.260.9191

Fax: 650.5275

TELEVISION

Cox Sports

602.379.2400

Fax: 379.2459

KNXV-TV 15 (ABC)

602.273.1500

Fax: 685.3000

KPHO-Television 5

(CBS)

602.263.4151

Fax: 650.0761

KPNX-Channel 12

(NBC)

602.257.1212

Fax: 257.6670

KSAZ-TV 10 (FOX)

602.262.5124

Fax: 262.0435

KTVK-Newschannel

3 (Ind.)

602.263.3430

Fax: 207.3477

WIRE SERVICE

Associated Press

(Phoenix)

500 N. Third Street

Suite 120

Phoenix, AZ 85004

602.258.8934

Fax: 254.9573

Associated Press

(Tucson)

P.O. Box 26807

Tucson, AZ 85726

520.294.1400

Associated Press

(New York)

450 West 33rd Street

New York, NY 10001

800.228.0919

Fax: 212.621.1639

Media Information:

To The Media

Any questions or assistance needed in arranging interviews can be obtained by contacting Vincent Briedis, Director of Sports Information, at (602) 589-2795.

Athletes and coaches are typically available before and after practice. GCU student-athletes are not available for interviews on game days prior to game time. Requests for interviewing a student-athlete at a practice or after a GCU event should be brought to the attention of Vincent Briedis.

Credentials

Requests for press/photo credentials should be faxed or mailed on official letterhead to the GCU Sports Information Office at (602) 589-2015 at least 24 hours prior to event. Since space is limited, accommodations are a priority to media that covers Antelope

Athletics on a regular basis and are a priority to any visiting school's requests. Working media with credentials have access to the team locker rooms and are provided with a designated seat location at each event.

Event Services

Basketball guides, game notes, lineups and cumulative statistics are furnished prior to each event. Final game statistics will also be available. All information can be obtained by contacting the sports information staff or visiting the sports information office. Telephone and fax services are available after each Grand Canyon event and are located in the sports information office. Media outside the metro Phoenix area may arrange to receive final statistics, and event summary and postgame quotes transmitted via facsimile.

Photographers

Event access will be available to photographers from media outlets which have received credentials from the GCU sports information office.

Radio and Television

Electronic media (radio and television) must obtain contact with the GCU sports information office at least 48 hours in advance to ensure broadcast locations. A limited amount of radio broadcast lines are available and are assigned on a first-come, first-served basis.



Coaching Staff

GRAND CANYON UNIVERSITY





Head Coach: Scott Mossman

Mossman Returns Home

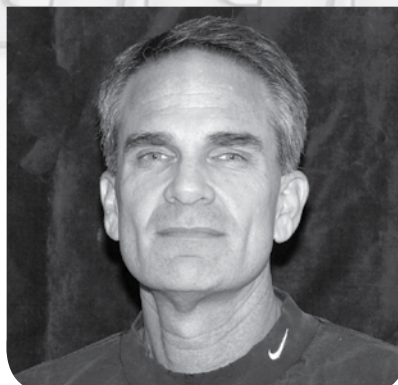
Scott Mossman returned to GCU in 2004 for what is his third stint with the Antelopes and first as the Men's Basketball Head Coach. In his previous tenures with GCU, Mossman was a key member of Paul Westphal's coaching staff that won the 1988 NAIA National Championship as well as three NAIA District 7 Championships. Mossman served as an assistant at GCU under the Westphal brothers Paul (1986-88) and Bill (1988-90) as well as his predecessor Leighton McCrary (1995-1997).

2004-2005 Season

The 'Lopes finished a fantastic turn around season in 2004-05 finishing the year **13-16** (13-13 versus non-division I opponents) their first year under Mossman after a team he inherited finished a very poor 3-24 just a year prior.

Mossman who was hired in late May of 2004 to take over the struggling program made a huge turn around against some of the top NCAA Division II teams in a very strong West Region as well as three stellar Division I teams.

Junior, **Noe Alonzo** led the way with 16.2 points per game while all of his offensive numbers were among the West Region leaders earning him an All-West Region Team nomination. **Ryan Nelson** finished the year 45th in the country with 5 assists per game while leading the team with 2 Triple Doubles. **Prileu Davis** put up 13.5



*Mid-America Nazarene College, 1982
Overall Tenure at GCU: 7th year
Head Coaching Tenure: 5th year
Head Coaching Record at Canyon:
13-16 (1 year)
Head Coaching Record Overall:
72-55 (4 years)*

points per game and earned MVP Honors at U of Alaska-Anchorage's Jamboree as well as All Tournament Honors at Fresno State's McCaffrey Classic. As a team GCU finished 35th in the country in field goal percentage with a 48% mark. Alonzo earned NCAA D-II All-Independent Player of the year while Davis was named NCAA D-II Defensive Player of the Year.

Prior Success

Mossman comes to GCU most recently from Biola University where he served as

an assistant coach for 7 years covering two stints from 1990-1995 and 2002-2004. This will be Mossman's second head coaching stint after spending three seasons at Cal Baptist from 1999-2002 amassing a 59-39 record and a .602 winning percentage. In Mossman's 16 years of college coaching his teams have compiled a 381-156 record (.700 winning percentage).

Mossman is a Phoenix native, graduating from Sunnyslope High School in 1976 before continuing his basketball career at Scottsdale Community College (SCC). After two seasons at SCC, he moved on to Mid-America Nazarene College in Olathe, Kansas where he graduated with a Bachelor of Science degree in physical education in 1982. In addition to his past coaching duties, Mossman is the founder and president of Quantified Scouting Services, which provides unique statistical analysis for NBA teams.

"Scott has the collegiate experience and familiarity with GCU which makes him an excellent consideration for Canyon," said Athletic Director Keith Baker. "His past success with wins and losses as well as the character of the players he has recruited in the past is a good fit for the university," said Baker upon Mossman's hiring in May of 2004.

Mossman resides in Phoenix with his wife, Debbie and their daughter Sarah.

All-Time Coaches Record

YEAR	COACH	REC.	PCT.
1949-50	Howard Mansfield	2-19	.095
1951-60	Dave Brazell	115-86	.572
1960-61	Don Reed	12-10	.443
1961-65	Dave Brazell	39-49	.698
1965-81	Ben Lindsey	317-137	.698
1981-83	Jay Arnote	40-19	.678
1983-86	John Shumate	57-34	.626
1986-88	Paul Westphal	63-18	.778
1988-90	Bill Westphal	51-15	.773
1990-2004	Leighton McCrary	207-163	.559
2004-	Scott Mossman	13-16	.444
Overall Record		917-560	.620

 **Assistant Coaches:**

**Bruce
Haroldson**

Bruce enters his second season on Mossman's staff after a very successful run on the college coaching circuit. Bruce was a baseball and basketball letterwinner at Augustan College in Sioux Fall, South Dakota where he earned his B.S. Bruce earned All-Conference honors as a senior and is a member of the schools Hall of Fame. After graduation he went on to earn his Master's of Education at the University of Oregon in 1964.

Bruce started his coaching career as an assistant at Arizona State where he served from 1967-1974 before getting the head



*Alma Mater: Augustana College, 1958
Year at Grand Canyon: 2nd Year*

coaching job at Mesa State in Colorado. Bruce stayed with the Mavericks until 1978 when left for the Head Coaching job

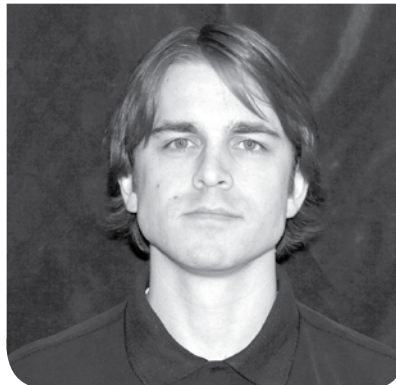
at Montana State. In 1983 Bruce moved on to Pacific Lutheran where he stayed until 2002. While at Pacific Lutheran he served as President of the NAIA Coaches Association as well as being a member of the Red Coat Tournament Official of the NAIA National Basketball Tournament in Point Lookout, Missouri.

Bruce served as an assistant for the West Team at the 1990 Olympic Festival in Minneapolis, Minnesota and for the past couple years as served as a scout for the WNBA's Portland and Charlotte franchises.

Bruce and his wife Joan of 38 years reside in Goodyear, Arizona and have 3 grown daughters and 4 grandchildren.

Matt Spivey

Matt enters his first year as part of the Mossman Staff. A former athlete, Matt was a member of Bethel College's 1997-98 NAIA National Championship team. A native of South Bend, Indiana Matt attended Mishawaka High School lettering in Basketball. Upon graduation Matt stayed in South Bend deciding to attend Bethel College where he earned his bachelor's in Education.



*Alma Mater: Bethel College, 2001
Year at Grand Canyon: 1st year*

Matt's coaching career began at the high school level where he coached Westwood High School for three years in Fort Pierce, Florida. Currently Matt is pursuing his Master's of Education through NAU and will be celebrating his first anniversary with his wife Beth in November of 2005. The couple resides in Phoenix.

Casey Weitzel

Casey enters his second season with the Men's Basketball program and first as a head coach. Last season Casey served as Team Manager as well as being a member of the Junior Varsity squad. Casey is currently pursuing a degree in Physical Education with a minor in History from GCU. Casey hails from Issaquah, Washington where he lettered in Golf and Basketball at Issaquah High.

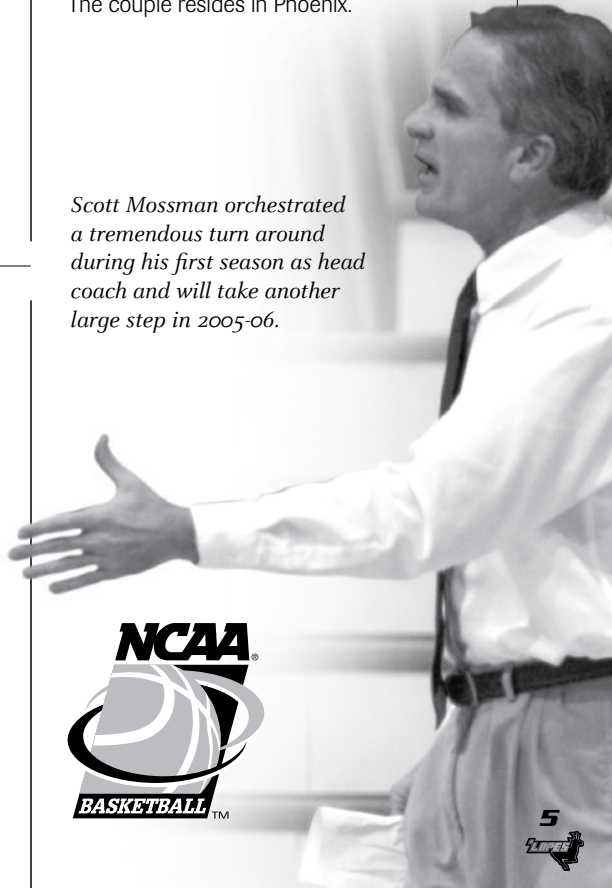
Casey comes from a coaching background as his father is the head boy's basketball coach at Issaquah High School.



Year at Grand Canyon: 2nd year

Casey currently resides in Peoria, Arizona.

Scott Mossman orchestrated a tremendous turn around during his first season as head coach and will take another large step in 2005-06.





Antelope Gymnasium:

The "new" Antelope Gymnasium opened in 1994 and hosts all Grand Canyon University NCAA events in Women's Volleyball, Men's and Women's Basketball in addition to dozens of amateur tournaments, concerts and other events year-round.

The on-campus facility has a capacity of 2,000 and is a part of a larger facility that encompasses the "Old Antelope Gymnasium". The new gym in addition to hosting amateur tournaments was also the site of a Celebrity Basketball game headlined by the likes of Magic Johnson and Deion Sanders as part of the Super Bowl XXX festivities in Phoenix in 1996. University of Arizona's Head Basketball Coach great Lute Olsen also used the facility for one of his many successful basketball coaching videos.

The facility is located on the north west corner of campus at 3300 W. Camelback Rd, Phoenix, Arizona.



ANTELOPES GYMNASIUM QUICK-FACTS:

- Year Opened 1994
- Capacity 2,000
- Press Line
- Phone..... 602.589.2022





The Players

GRAND CANYON UNIVERSITY





2005-06 Roster

NO.	NAME	POSITION	HEIGHT	WEIGHT	YEAR	HOMETOWN/PREVIOUS SCHOOL
3	Rich Davis	GRD	6'2"	209	JR	Glendale, AZ/Glendale CC
10	Ryan Nelson	GRD	6'0"	165	SR	Phoenix, AZ/Glendale CC
11	Mike Grothaus	GRD	6'3"	195	JR	Gilbert, AZ/Jamestown College
14	Milee Karre	GRD	6'2"	171	FR	Buckeye, AZ/Buckeye High School
22	Bryan Lee	GRD/FWD	6'8"	215	FR	Antioch, CA/Deer Valley High School
23	Sonny Smith	GRD/FWD	6'3"	209	SR	Phoenix, AZ/Concordia University
24	Capliph Mohammed	GRD	6'2"	205	SR	Elmsford, NY/St. Thomas Moore
32	Tareq Ramirez	GRD	6'2"	205	FR	Scottsdale, AZ/Coronado High School
33	Jason Stromvall	GRD/FWD	6'5"	206	JR	Puyallup, WA/Tacoma CC
34	Noe Alonzo	GRD/FWD	6'6"	210	SR	Queen Creek, AZ/South Mountain CC
41	Mark Plaisier	POST	6'6"	216	SR	Byron Center, MI/Calvin College
44	Andray Glenn	POST	6'8"	215	FR	Modesto, CA/Modesto Christian
50	Jesse Johns	POST	FR	216	FR	Sedona, AZ/Sedona Red Rock High School
RS	David Gonzales	GRD/FWD	6'5"	205	JR	Puyallup, WA/Pierce College

HEAD COACH	Scott Mossman , 7th year overall (72-55), Mid-America Nazarene College '82
ASSISTANT COACHES	Bruce Haroldson , 2nd year, Augustana College '58
	Matt Spivey , 1st year, Bethel College '01
	Casey Weitzel , 2nd year



Front Row: L to R—Assistant Coach Matt Spivey, Head Coach Scott Mossman, Assistant Coach Bruce Haroldson, Assistant Coach Casey Weitzel

Back Row: L to R—Ryan Nelson, Rich Davis, Mike Grouthaus, David Gonzales, Mark Plaisier, Noe Alonzo, Jesse Johns, Bryan Lee, Andray Glenn, Jason Stromvall, Sonny Smith, Milee Karre, Tareq Ramirez

Not Pictured—Caliph Mohammed



2005-06 Season Outlook

Vincent Briedis, Director of Sports Information

2004-05 Recap

Entering his first season as Head Coach at Grand Canyon University, Scott Mossman performed a huge overhaul from a squad that went 3-24 prior to his hire. The climb back to national prominence appeared a daunting task but Mossman was eager for the challenge making huge strides in his first season at the helm. The 'Lopes finished 13-16 with three of their losses coming at the hand of solid Division I teams in Fresno State, South Florida and Utah Valley State. The season started out on a high note when the 'Lopes won the Jamboree at Alaska-Anchorage. Prileu Davis was named Tournament MVP as GCU topped host Alaska Anchorage and Caldwell College. **Noe Alonzo** was named NCAA D-II Independent Player of the Year while being named to the First Team, averaging 16.2 points per game. Davis was named NCAA D-II Defensive Player of the Year and **Ryan Nelson** finished 45th in the Nation with 5.0 assists per game. The season resulted in a nice stepping stone in the direction Mossman is taking the program and that's straight up.

Building on Past Success

The progress that was shown on the court last year turned over into tremendous off season out by the three returning players in Alonzo, Nelson and Jr. **Bryan Lee** who look to spearhead the 2005-06 Attack. Nelson brings his "Steve Nash" like leadership qualities to the court setting up the offense for fellow senior captain Alonzo and former CCAA shot block champion Lee.

There are a number of new faces in the "Canyon" this year.

Starting with four freshman who look to build a nucleus that will keep GCU fans excited for the next four years.

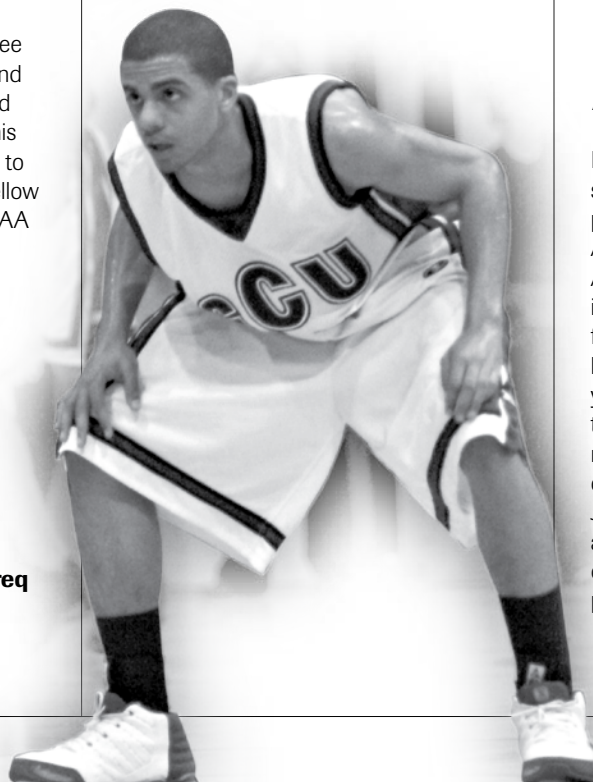
Milee Karre, Jesse Johns and **Tareq Ramirez** are all former Arizona prep



stars that look to shine at GCU. Andray Glenn is a redshirt freshman after suffering a shoulder injury that required season ending surgery before the ball was even tipped for the start of last season.

There are a trio of transfers that will add immediate maturity and solidify the on-court presence. **Jason Stromvall** and **Rich Davis** are junior college transfers while **Sonny Smith** comes to GCU via Concordia University. The fourth transfer, **David Gonzalez**, was lost for the season after tearing his ACL in preseason practice.

Mark Plaisier will add some size to the post after spending last season on the junior varsity squad. **Mike Grouthaus**



appeared in three games for the 'Lopes last year while spending most of the year with the junior varsity team. **Caliph Mohammed** returns to the 'Lopes roster this season to conclude his GCU career after sitting out last season. Mohammed has appeared in 49 games for the 'Lopes over the 2002-03 and 2003-04 seasons and will be an added weapon off the bench for Mossman to utilize.

Season Foes

The season will match GCU up with the premier teams in the west region once again.

The 'Lopes will have very tough home and home series with BYU-Hawaii, Hawaii Pacific, Cal State Bakersfield and Chaminade University. Cal State San Bernardino, a California Collegiate Athletic Association powerhouse the last few years, appears on the schedule as do other former CCAA foes San Francisco State and UC San Diego. The 'Lopes also will participate in two very strong tournaments at Central Washington and Ft. Lewis College.

Tradition in the Desert

Basketball at Grand Canyon is synonymous with excellence and prominence. The hallowed court at Antelope Gymnasium has had All-Americans and National Champions cross its lines instilling pride into the Canyon faithful. The first half of this decade has been difficult for those faithful with down years by Canyon standards. Year two of the Mossman era looks to continue the rapid rise back to the days of the teams coached by Ben Lindsey, Jay Arnote, John Shumate, Paul and Bill Westphal and early Leighton McCary, back to the days that gave GCU the ability to proudly proclaim its Tradition in the Desert.



Returning Player Profiles

34

Noe Alonzo Senior

6' 6", 210 lbs, Guard/Forward
Queen Creek, AZ



BIRTHDATE:

December 28, 1983

MAJOR: Communications

PREVIOUS SCHOOL:

South Mountain CC

HIGH SCHOOL: Mesa

EXPERIENCE: Junior College

CAREER HIGHLIGHTS: 2004-05 Season—Earned NCAA D-II Independent

Player of the Year honors in his first season with the Antelopes...led the 'Lopes with 471 points which adds up to 16.2 points per game while pulling 5.1 rebounds a game...scored season highs 25 points against CS Stanislaus on December 11th and then matched it three nights later against Central Washington on December 14, 2004...Collected 13 rebounds at Western New Mexico on February 23, 2005 and had a season high 3 steals versus South Florida...**Junior College**—Joins GCU after playing at South Mountain Community College...**High School**—a graduate of Mesa High School where he lettered 3 years in basketball.

CAREER STATS AT CANYON						
SEASON	G/GS	PPG	RPG	AST	BLK	STL
'04-'05	29-27	16.2	5.1	38	12	20

2004-05 HIGHS

Points: 25, vs Central Washington 12/14/04, vs CS Stanislaus 12/11/04

Field Goals: 11 vs Central Washington 12/14/04

3-PT Field Goals: 4 vs Southwestern College 2/8/05

Free Throws Made: 11 @ UC San Diego 1/25/05

Rebounds: 13 @ Western New Mexico 2/23/05

Assists: 6 vs San Francisco State 1/18/05

Steals: 3 vs South Florida 12/4/04

Blocked Shots: 3 vs San Francisco State 1/18/05

Turnovers: 4 5x, last @ Hawaii Pacific 2/28/05

Minutes Played: 40 3x, last @ Western New Mexico 2/23/05

CAREER HIGHS

Points: 25, vs Central Washington 12/14/04, vs CS Stanislaus 12/11/04

Field Goals: 11 vs Central Washington 12/14/04

3-PT Field Goals: 4 vs Southwestern College 2/8/05

Free Throws Made: 11 @ UC San Diego 1/25/05

Rebounds: 13 @ Western New Mexico 2/23/05

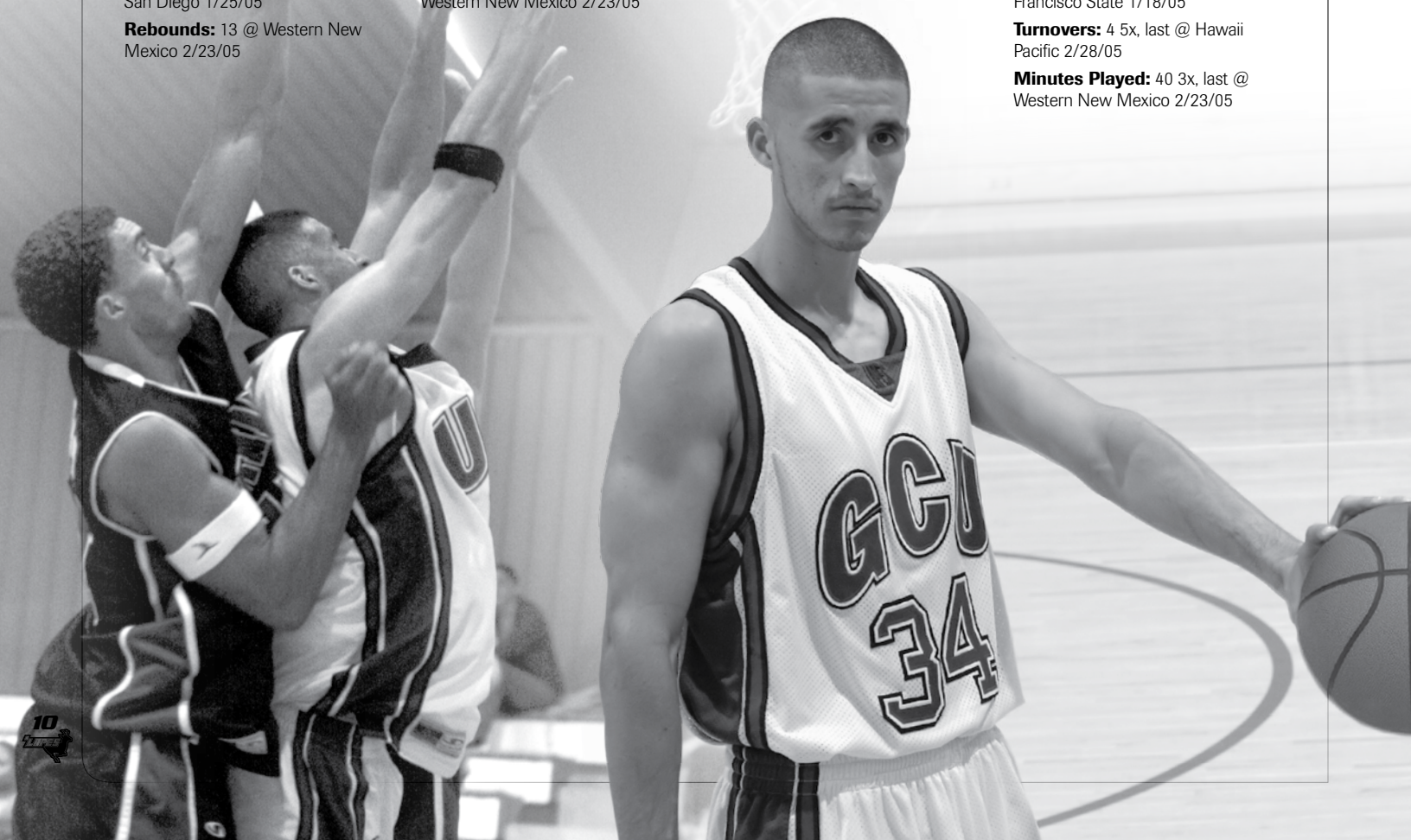
Assists: 6 vs San Francisco State 1/18/05

Steals: 3 vs South Florida 12/4/04

Blocked Shots: 3 vs San Francisco State 1/18/05

Turnovers: 4 5x, last @ Hawaii Pacific 2/28/05

Minutes Played: 40 3x, last @ Western New Mexico 2/23/05

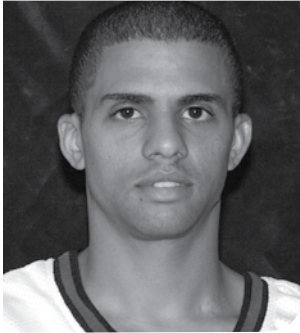


Returning Player Profiles

10

Ryan Nelson, Senior

6' 0", 165 lbs, Guard
Phoenix, AZ



BIRTHDATE: March 20, 1983

MAJOR: Business

PREVIOUS SCHOOL: Glendale CC

HIGH SCHOOL: Westview

EXPERIENCE: 4-year College

CAREER HIGHLIGHTS: 2004-05 Season—Serves as a great story of strength after losing both of his kidneys to kidney failure in March of 2004. His sister donated one of hers and Ryan was ready to play by the beginning of the season...finished the season 45th in the nation in assists, dishing out 5.1 per game (124)...Had back-to-back Triple-Doubles within three days, against Chaminade University on February 5, 2005 and Southwestern College on February 8, 2005...In game against Chaminade

had 13 points, 10 rebounds and 10 assists...Against Southwestern College had 16 points, 10 rebounds and 10 assists in 17 minutes of play...Had a season high 20 points at Southwestern College on January 20, 2005 and played a season high 39 minutes at Fresno State...scored 228 points good for 9.1 per game while pulling down 4.2 rebounds a game from the point guard position...

Junior College—Joins GCU after playing 1 season at Glendale Community College where he earned 1st Team All-ACCAC honors...**4-year College**—Spent 2 years at St Mary's College in Moraga, CA redshirting in 2002-03.

High School—a graduate of local Westview High School where he was a 4 year letterwinner in basketball earning All-Region and All State honors as well as being named MVP of the Southwest Region.

2004-05 HIGHS

Points: 20, @ Southwestern College 1/20/05

Field Goals: 7 3x last vs Southwestern College 2/8/05

3-PT Field Goals: 4 vs San Francisco State 1/18/05

Free Throws Made: 5 @ Hope International 2/1/05

Rebounds: 10 vs Southwestern College 2/8/05, vs Chaminade University 2/5/05

Assists: 10 vs Southwestern College 2/8/05, vs Chaminade University 2/5/05

Steals: 3 vs Central Washington 12/15/04

Blocked Shots: 1 6x last @ Utah Valley State 2/15/05

Turnovers: 7 vs Southern New Hampshire 12/30/04

Minutes Played: 39 @ Fresno State 12/3/04

CAREER HIGHS

Points: 20, @ Southwestern College 1/20/05

Field Goals: 7 3x last vs Southwestern College 2/8/05

3-PT Field Goals: 4 vs San Francisco State 1/18/05

Free Throws Made: 5 @ Hope International 2/1/05

Rebounds: 10 vs Southwestern College 2/8/05, vs Chaminade University 2/5/05

Assists: 10 vs Southwestern College 2/8/05, vs Chaminade University 2/5/05

Steals: 3 vs Central Washington 12/15/04

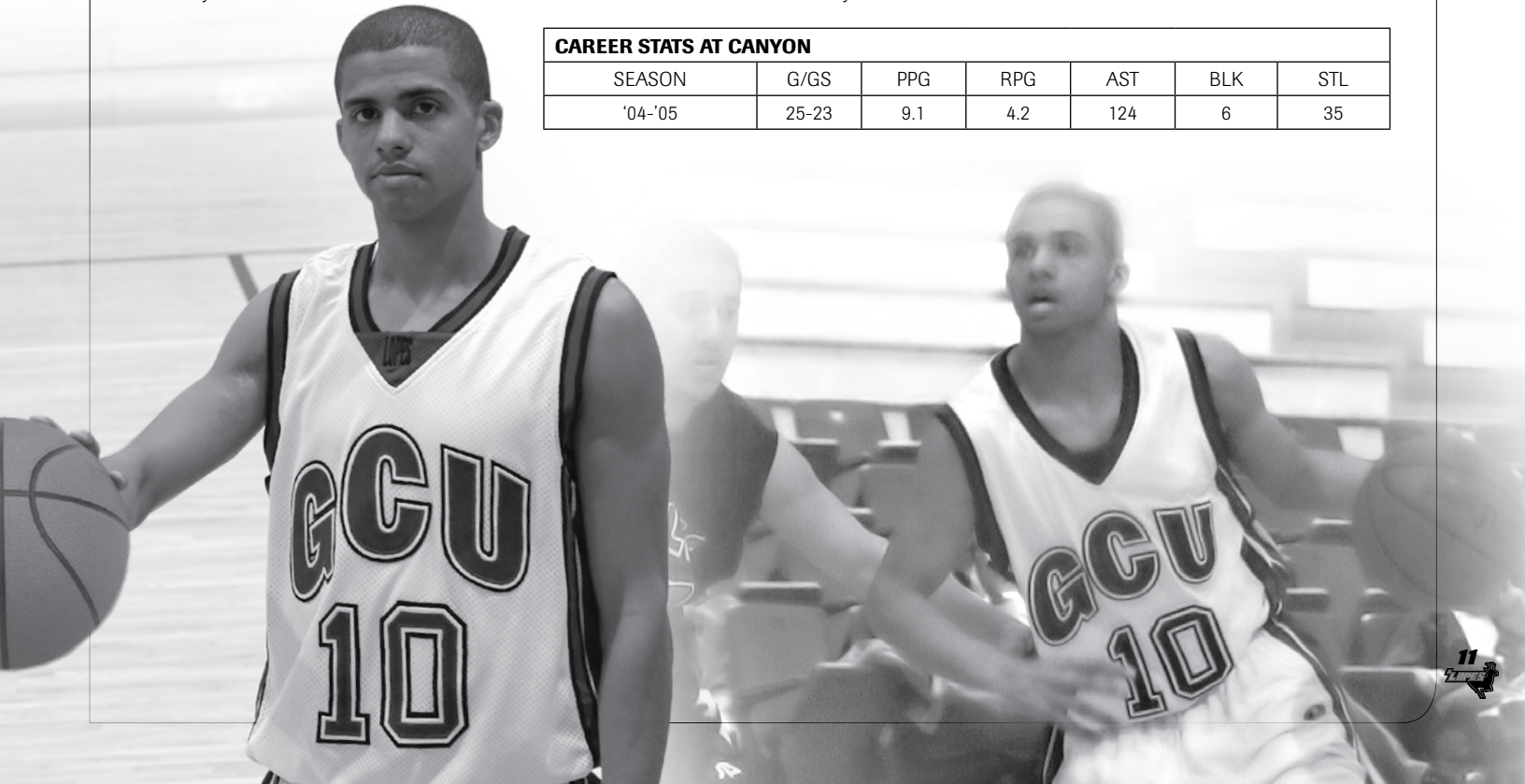
Blocked Shots: 1 6x last @ Utah Valley State 2/15/05

Turnovers: 7 vs Southern New Hampshire 12/30/04

Minutes Played: 39 @ Fresno State 12/3/04

CAREER STATS AT CANYON

SEASON	G/GS	PPG	RPG	AST	BLK	STL
'04-'05	25-23	9.1	4.2	124	6	35



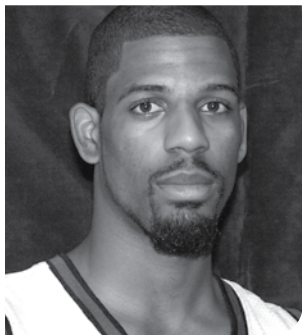


Returning Player Profiles

22

Bryan Lee, Junior

6' 8", 215 lbs, Guard/Forward
Antioch, CA



BIRTHDATE: October 3, 1985

MAJOR: Business Administration

HIGH SCHOOL: Deer Valley (CA)

EXPERIENCE: 1 year Varsity

CAREER HIGHLIGHTS: 2004-05 Season—Great athletic excitement during his sophomore year with his blocks dunks off offensive rebounds... started 19 of the 27 games in which he played averaging 6.3 points per game and 4.0 rebounds a game... Had a season high 15 points at

Simpson University on November 26, 2004... Pulled down a season high 11 rebounds at Hawaii Pacific on February 28, 2005... Career high 5 blocks at home against Central Washington on December 15, 2004... led the team with 34 blocks... **2003-04 Season**—Started all 26 of the 27 games he played in as a freshman... Averaged 10.2 points per game and 5.4 rebounds per game... His 40 blocks led the California Collegiate Athletic Association... **High School**— a 2003 graduate of Deer Valley High School in Antioch, California... 2 year letterwinner in basketball earning All-League Honors.

CAREER STATS AT CANYON

SEASON	G/GS	PPG	RPG	AST	BLK	STL
'03-'04	27-26	10.2	5.4	29	40	15
'04-'05	27-19	6.3	4.0	20	34	14
CAREER	54/45	8.2	4.7	49	74	29

2004-05 HIGHS

Points: 15, @ Simpson University 11/26/04

Field Goals: 7 @ Simpson University 11/26/04

3-PT Field Goals:

Free Throws Made: 7 vs Central Washington 12/15/04

Rebounds: 11 @ Hawaii Pacific 2/28/05

Assists: 3 vs Central Washington 12/14/04

Steals: 5 vs Southwestern College 2/8/05

Blocked Shots: 5 vs Central Washington 12/15/04

Turnovers: 3 5x, vs San Francisco State 1/18/05

Minutes Played: 32 @ Simpson University 11/26/04

CAREER HIGHS

Points: 26, @ CS Stanislaus 1/24/04

Field Goals: 8 @ CS Stanislaus 1/24/04

3-PT Field Goals: 1 3x last @ Chico State 2/21/04

Free Throws Made: 10 @ CS Stanislaus 1/24/04

Rebounds: 11 3x @ Hawaii Pacific 2/28/05, @ CS Stanislaus 1/24/04, vs Saint Anselm 12/28/03

Assists: 4 vs Saint Anselm 12/28/03

Steals: 5 vs Southwestern College 2/8/05

Blocked Shots: 5 vs Central Washington 12/15/04

Turnovers: 5 5x, last @ CS San Bernardino 3/6/04

Minutes Played: 39 3x last @ CS San Bernardino 3/6/04

Andray Glenn

Fr., 6' 8", 215 lbs, Post
Modesto, CA

44



BIRTHDATE: May 29, 1985

MAJOR: Business Administration

HIGH SCHOOL: Modesto Christian (CA)

EXPERIENCE: High School

CAREER HIGHLIGHTS: 2004-2005

Season: Used Medical Redshirt after having a pre-season shoulder surgery... **High School**—a graduate of Modesto Christian High School where he lettered in Basketball all 4 years.

TIP-INS: Was born in Hanover, Jamaica... Favorite Movie is "Finding Nemo" and enjoys watching Sports Center in his free time.

Mike Grothaus

Jr., 6' 3", 195 lbs, Guard
Gilbert, AZ

11



BIRTHDATE: November 30, 1984

MAJOR: Physical Education

PREVIOUS SCHOOL: Jamestown College (ND)

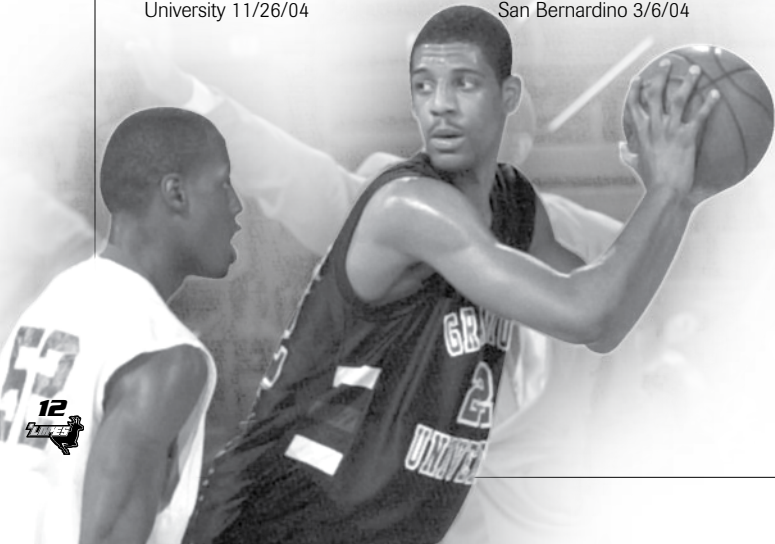
HIGH SCHOOL: Gilbert

EXPERIENCE: 4-year College

CAREER HIGHLIGHTS: 2004-05 Season—Appeared in 3 games for the 'Lopes... spent most of the year on the junior varsity squad... **4-Year College**—spent one year at Jamestown College in Jamestown, North Dakota... **High School**—was a 2003 graduate of Gilbert High School where he earned All-Fiesta Region, All-East Valley and All-State Honors in basketball.

CAREER STATS AT CANYON

SEASON	G/GS	PPG	RPG	AST	BLK	STL
'04-'05	3/0	0.0	0.0	0	0	0



New Player Profiles

Rich Davis
 Jr., 6' 0", 203 lbs, Guard
 Glendale, AZ

3

BIRTHDATE: March 4, 1983
MAJOR: Physical Education
PREVIOUS SCHOOL: Glendale CC
HIGH SCHOOL: Independence
EXPERIENCE: Junior College



CAREER HIGHLIGHTS: Junior College—
 Comes to GCU via Glendale CC where he played two seasons... **High School—**Was a 2001 graduate of Independence High School where he lettered in basketball.

David Gonzales
 Jr., 6' 7", 210 lbs, Guard
 Puyallup, WA

RS

BIRTHDATE: July 10, 1984
MAJOR: Criminal Justice
PREVIOUS SCHOOL: Pierce College (WA)
HIGH SCHOOL: Sumner (WA)
EXPERIENCE: 4-year College



CAREER HIGHLIGHTS: Junior College—
 Comes to GCU via Pierce College in Puyallup, WA... **4-year college—**
 Spent his freshman year at Pensacola Christian College in Florida where he was Defensive Player of the Year... **High School—**2003 graduate of Sumner High School in Washington where he played basketball.

Jesse Johns
 Fr., 6' 9", 210 lbs, Post
 Sedona, AZ

50

BIRTHDATE: September 20, 1986
MAJOR: Undecided
HIGH SCHOOL: Sedona Red Rock
EXPERIENCE: High School



CAREER HIGHLIGHTS: High School—
 2005 graduate of Sedona Red Rock where he was a two time All-Conference selection while earning Team MVP honors as a junior and senior.
TIP INS: Favorite movie is "The Passion of the Christ."

Milee Karre
 Fr., 6' 2", 175 lbs, Guard
 Buckeye, AZ

11

BIRTHDATE: January 11, 1987
MAJOR: Journalism
HIGH SCHOOL: Buckeye
EXPERIENCE: High School



CAREER HIGHLIGHTS: High School—
 2005 graduate of Buckeye High School where he was a 4-time All-Region Honoree.
TIP INS: Favorite Athlete is Steve Nash, and one day would like to be an NBA beat writer.

Caliph Mohammed
 Sr., 6' 2", 205 lbs, Guard
 Elmsford, NY

24

BIRTHDATE: February 14, 1979
MAJOR: Physical Education
HIGH SCHOOL: St. Thomas More (CT)
EXPERIENCE: 2 year varsity



CAREER HIGHLIGHTS: 2004-05 Season—
 Did not play... **2003-04 Season—**Appeared in 27 games, starting 1 in his second season with the 'Lopes... Averaged 2.9 points per game while pulling down 1.6 rebounds a game... **2002-03 Season—**Played in 22 games in freshman season... **High School—**a 1999 graduate of Thomas More High School in Oakdale, CT where he played basketball for a season... Prior to TMHS, attended Pleasantville High School in Pleasantville, NY where he was a three-year letterwinner in basketball, and a three-time All-County honoree... Also earned All-State honors while at PHS.
TIP-INS: Attended Gulf Coast Community College for a semester, where he did not play.

CAREER STATS AT CANYON						
SEASON	G/GS	PPG	RPG	AST	BLK	STL
'02-'03	22/0	1.5	0.5	5	1	4
'03-'04	27/1	2.9	1.6	10	3	10
TOTALS	49.1	2.2	1.1	15	4	14

New Player Profiles

Mark Plaisier

Sr., 6' 7", 229 lbs, Post
Byron Center, MI

41

BIRTHDATE: February 13, 1983

MAJOR: Physical Education

PREVIOUS SCHOOL: Calvin College (MI)

HIGH SCHOOL: South Christian (MI)

EXPERIENCE: Junior Varsity

CAREER HIGHLIGHTS: 2004-05 Season—

Spent the year on Grand Canyon University's junior varsity squad...

4-year College—Spent two seasons at Calvin College in Grand Rapids, Michigan... **High School—**2001 graduate of South Christian High School in Michigan... Earned All-Conference honors in basketball.

TIP INS: Would like to be a basketball coach and cites Tracy McGrady as his favorite player.



Tareq Ramirez

Fr., 6' 1", 210 lbs, Guard
Scottsdale, AZ

32

BIRTHDATE: August 8, 1987

MAJOR: Undecided

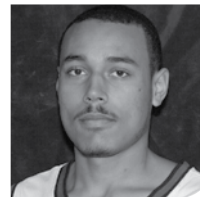
HIGH SCHOOL: Coronado

EXPERIENCE: High School

CAREER HIGHLIGHTS: High School—

2005 graduate of local Coronado High School... earned Region Player of the Year honors while picking up 1st Team All-Region and 2nd Team All-State honors as a senior.

TIP INS: Ray Allen is cited as his favorite athlete.



Sonny Smith

Sr., 6' 4", 210 lbs, Guard
Crestview, FL

23

BIRTHDATE: December 22, 1978

MAJOR: Undecided

PREVIOUS SCHOOL:

Concordia University (CA)

HIGH SCHOOL: Crestview (FL)

EXPERIENCE: Junior Varsity

CAREER HIGHLIGHTS: 4-year College—Spent a year at Concordia University in Irvine... **High School—**1997 graduate of Crestview High School in Florida.

TIP INS: Ran Track at Phoenix College... Jim Brown is his favorite athlete.



Jason Stromvall

Jr., 6' 4", 210 lbs, Guard
Puyallup, WA

33

BIRTHDATE: December 31, 1984

MAJOR: Communications

PREVIOUS SCHOOL: Tacoma CC

HIGH SCHOOL: Emerald Ridge High School

EXPERIENCE: Emerald Ridge (WA)

CAREER HIGHLIGHTS: Junior College—

Spent the last two years at Tacoma Community College where he was MVP of the West Region NWAAC... Named to the West Region NWAAC All-Star Team... **High School—**2003 graduate of Emerald Ridge High School where he earned SPSSL All-League First Team honors.

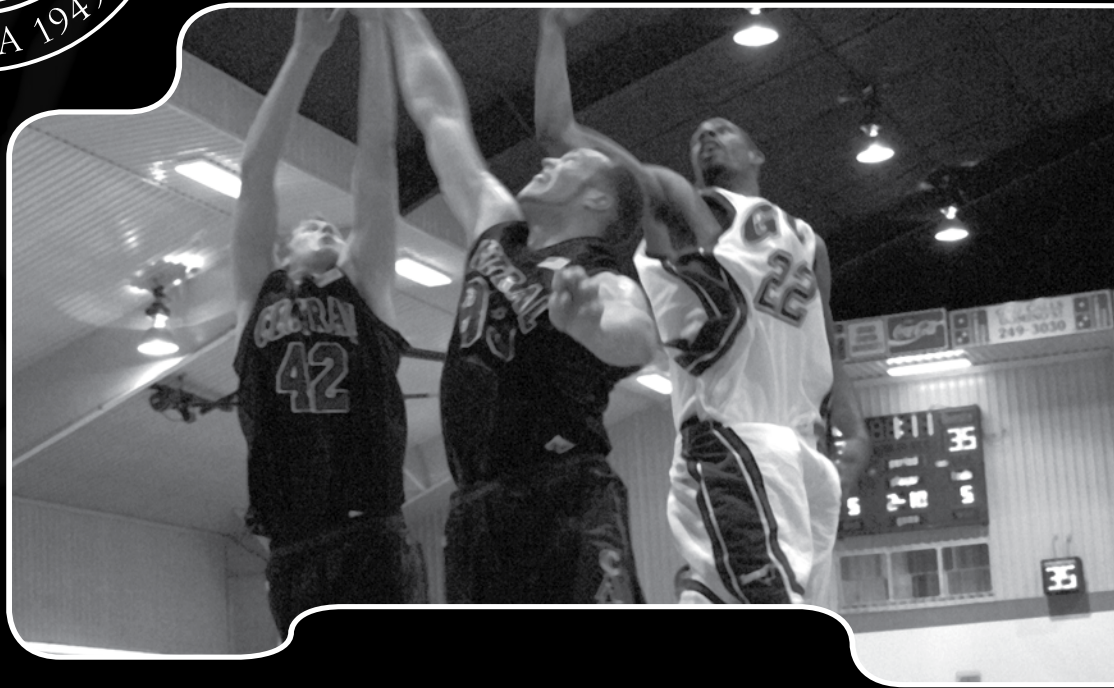


Below: Ryan Nelson shined in his first season with GCU collecting two Triple-Doubles, finishing 45th in the nation in assists while averaging 9.1 points per game. Nelson shined all season despite suffering failure to both his kidney's eight months prior to the start of the season.





2004-05
Review/History
GRAND CANYON UNIVERSITY

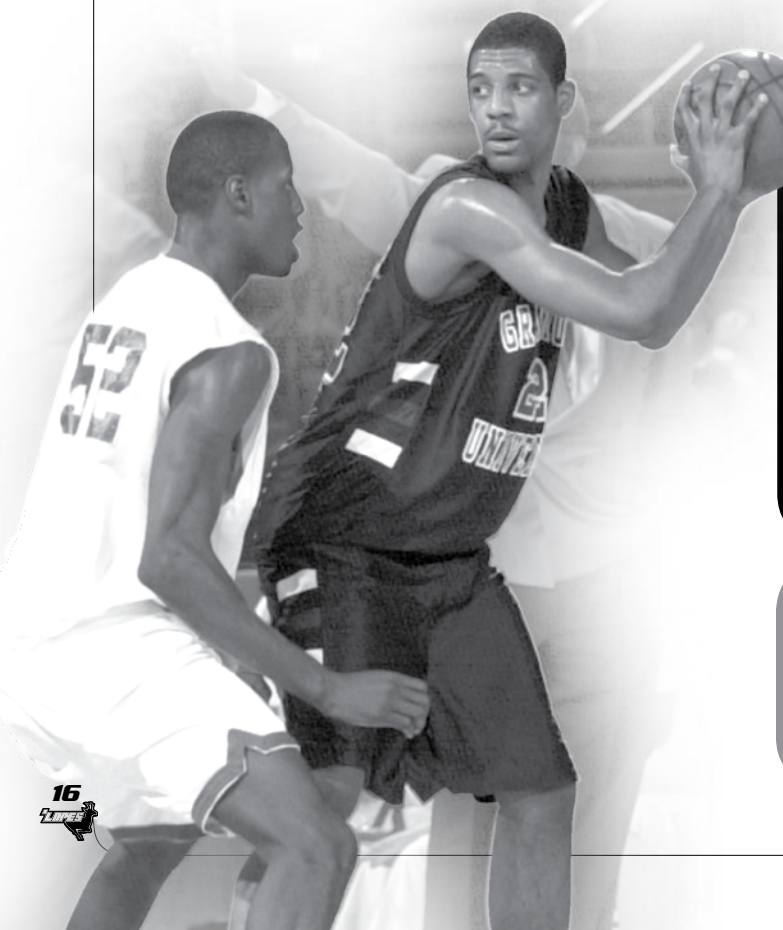




2004-2005 Season Statistics:

PLAYER	TOTAL				3-PTS		REBOUNDS														
	GP-GS	MIN	AVG	FG-FGA	PCT	3FG-FGA	PCT	FT-FTA	PCT	OFF	DEF	TOT	AVG	PF	FO	A	TO	BLK	STL	PTS	AVG
Noe Alonzo	29-27	904	31.2	166-321	.517	31-71	.437	108-136	.794	41	106	147	5.1	75	0	38	45	12	20	471	16.2
Prileu Davis	29-27	980	33.8	141-317	.445	42-137	.307	67-94	.713	22	64	86	3.0	49	0	67	77	4	30	391	13.5
Ryan Nelson	25-23	748	29.9	85-183	.464	29-71	.408	29-39	.744	17	88	105	4.2	67	2	124	67	6	35	228	9.1
Emil Swain	28-9	597	21.3	75-143	.524	11-30	.367	44-65	.677	7	50	57	2.0	50	0	59	38	6	16	205	7.3
Bryan Lee	27-19	497	18.4	65-120	.542	0-0	.000	41-66	.621	29	78	107	4.0	65	2	20	36	34	14	171	6.3
Mike Daye	22-2	371	16.9	50-93	.538	0-0	.000	28-51	.549	35	73	108	4.9	46	0	9	24	7	8	128	5.8
Curtis Green	29-13	652	22.5	55-144	.382	22-75	.293	33-40	.825	12	42	54	1.9	43	0	70	41	3	26	165	5.7
Kevin Stevenson	17-10	306	18.0	30-59	.508	0-0	.000	13-22	.591	24	35	59	3.5	25	0	8	13	2	11	73	4.3
Drew Ellsworth	22-0	247	11.2	28-76	.368	22-65	.338	6-9	.667	5	18	23	1.0	29	1	6	13	0	9	84	3.8
Maen Odeh	27-14	318	11.8	39-77	.506	2-11	.182	16-25	.640	18	54	72	2.7	55	1	20	24	5	12	96	3.6
Jason Pettaway	8-0	47	5.9	8-13	.615	2-2	1.000	1-2	.500	1	9	10	1.3	7	0	1	5	0	5	19	2.4
Ricky Greer	8-1	60	7.5	3-10	.300	0-3	.000	0-0	.000	1	5	6	0.8	6	0	1	2	1	1	6	0.8
Mike Grothaus	3-0	7	2.3	0-1	.000	0-1	.000	0-0	.000	0	0	0	0.0	3	0	0	1	0	0	0	0.0
Team										43	54	97	3.5	1							
VCU TOTALS	29	5734		745-1557	.478	161-466	.345	386-549	.703	255	676	931	32.1	521	6	423	394	80	187	2037	70.2
OPPONENT TOTALS	29	5802		720-1615	.446	192-492	.390	407-565	.720	313	645	958	33.0	525	-	390	393	69	198	2039	70.3

Key: **GP-GS** - Games Played-Games Started; **MIN** - Minutes Played; **AVG** - Average; **FG-FGA** - Field Goals-Field Goal Attempts; **PCT** - Percentage; **3FG-FGA** - 3 Point Field Goals-3 Point Field Goal Attempts; **FT-FTA** - Free Throws-Free Throw Attempts; **OFF** - Offensive Rebounds; **DEF** - Defensive Rebounds; **TOT** - Total Rebounds; **PF** - Personal Fouls; **FO** - Foul Outs; **A** - Assists; **TO** - Turnovers; **BLK** - Blocks; **STL** - Steals; **PTS** - Points



SCORE BY PERIODS	1ST	2ND	TOTAL
Grand Canyon University	973	1082	2055
Opponents	932	1107	2039

DEADBALL REBOUNDS	OFF	DEF	TOTAL
Grand Canyon University	67	0	67
Opponents	57	3	60

RECORDS BREAKDOWN	
Overall Record	13-16
Home Record	5-8
Road Record	7-7
Neutral Site Record	1-1



2004-2005 Season Results:

DATE	TIME	OPPONENT	SCORE	ATTEND	HIGH POINTS	HIGH REBOUNDS
11/19/04	7:05pm	at Alaska Anchorage ^	W, 70-66	875	(20) Prileu Davis	(7 each) Kevin Stevenson, Mike Daye
11/20/04	6:00pm	vs Caldwell College ^	W, 79-74	218	(21) Emil Swain	(6 each) Bryan Lee, Kevin Stevenson, Noe Alonzo
11/24/04	7:00pm	at Chico State	L, 70-84	678	(18) Prileu Davis	(11) Mike Daye
11/26/04	5:30pm	at Simpson University	W, 90-60	67	(22) Noe Alonzo	(8) Kevin Stevenson
11/27/04	7:30pm	at Cal State Stanislaus	L, 64-80	955	(14) Prileu Davis	(6) Kevin Stevenson
11/29/04	7:00pm	at San Francisco State	W, 71-51	229	(19) Noe Alonzo	(7) Noe Alonzo
12/3/04	8:00pm	at Fresno State &	L, 53-63	11104	(16) Prileu Davis	(8) Mike Daye
12/4/04	5:30pm	vs South Florida &	L, 52-63	11104	(15) Prileu Davis	(5) Kevin Stevenson
12/11/04 7:00pm		Cal State Stanislaus	W, 78-75	236	(25) Noe Alonzo	(6) Maen Odeh
12/14/04 7:00pm		Central Washington	W, 79-61	123	(25) Noe Alonzo	(4 each) Ryan Nelson, Noe Alonzo, Bryan Lee
12/15/04 7:00pm		Central Washington	L, 80-97	154	(24) Noe Alonzo	(7) Noe Alonzo
12/18/04 2:00pm		Cal Poly Pomona	L, 46-59	132	(13) Noe Alonzo	(7) Noe Alonzo
12/21/04 7:00pm		Chico State	L, 68-73	136	(21) Curtis Green	(14) Mike Daye
12/28/04 8:00pm		Christian Brothers	L, 64-84	234	(14) Prileu Davis	(5) Prileu Davis
12/30/04 8:25pm		Southern New Hampshire	L, 68-75	236	(17) Noe Alonzo	(8) Noe Alonzo
1/01/05 7:00pm		Ft. Lewis	L, 79-81	234	(23 each) Noe Alonzo, Prileu Davis	(9) Ryan Nelson
1/04/05	7:30pm	at CS Bakersfield	L, 75-83	1393	(21) Noe Alonzo	(6) Mike Daye
1/12/05 7:00pm		Cal State Monterey Bay	L, 55-66	324	(17) Noe Alonzo	(6) Noe Alonzo
1/14/05 7:00pm		Western New Mexico	W, 75-67	345	(23) Noe Alonzo	(7 each) Prileu Davis, Maen Odeh
1/18/05 7:00pm		San Francisco State	W, 77-60	224	(18) Ryan Nelson	(6 each) Ryan Nelson, Noe Alonzo
1/20/05	7:00pm	at Southwestern College	W, 90-64	125	(29) Prileu Davis	(8) Mike Daye
1/25/05	6:00pm	at UC San Diego	L, 64-78	89	(24) Noe Alonzo	(8) Ryan Nelson
2/01/05	7:30pm	at Hope International	W, 67-63	150	(14) Noe Alonzo	(4 each) Mike Daye, Bryan Lee, Prileu Davis
2/05/05 8:00pm		Chaminade University	L, 81-89	345	(18) Noe Alonzo	(10) Ryan Nelson
2/8/05 7:00pm		Southwestern College	W, 101-56	423	(19) Maen Odeh	(20) Mike Daye
2/15/05	7:05pm	at Utah Valley State	L, 49-71	895	(22) Noe Alonzo	(6) Ryan Nelson
2/23/05	7:00pm	at Western N.M.	W, 77-64	220	(24) Prileu Davis	(13) Noe Alonzo
2/26/05	7:35pm	at Chaminade University	L, 71-78	200	(16) Noe Alonzo	(6) Bryan Lee
2/28/05	7:30pm	at Hawaii Pacific University	W, 62-54	465	(19) Prileu Davis	(11) Bryan Lee

SCHEDULE LEGEND

Home Matches in Bold

+ Alaska Anchorage Jamboree

& McCaffrey Classic hosted by Fresno State

ATTENDANCE SUMMARY

	NO. OF GAMES	TOTAL	AVG/GAME
Home	13	3146	242
Away	14	17445	1246
Neutral	2	11322	5661
Total	29	31913	1100



MaCaffrey Classic

Considered one of the premier collegiate basketball showcases on the West Coast, Fresno State hosted its 26th men's college basketball tournament during the 2004-05 Season in which Grand Canyon was a participant.



Drawing more than 400,000 fans in the last 25 years, Fresno State captured its eighth McCaffrey title in the last nine years as they topped Mississippi Valley State in

the Championship Game, 80-65. Grand Canyon proved to be toughest competition in the tournament for both teams they played. Facing host Fresno State in their first game of the tournament GCU entered the final two minutes of play down 2 points in front of a packed Save Mart Center before falling 63-53. The Bulldogs pulled away in the final minutes making their free throw shots as the 'Lopes were forced to foul.

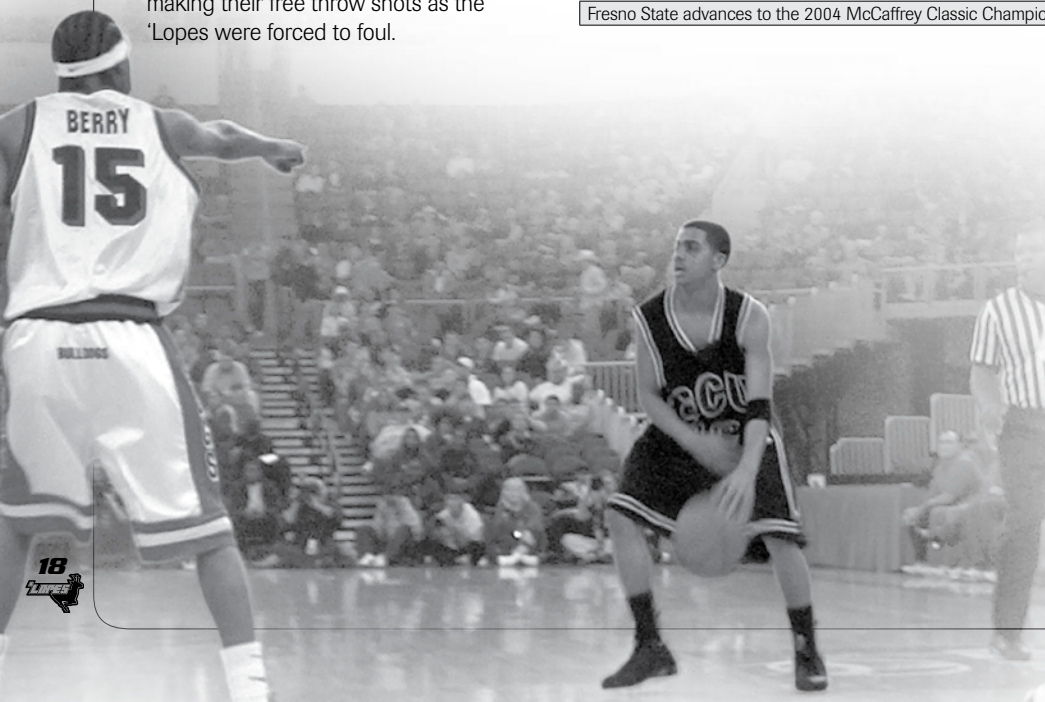
Official Basketball Box Score											GRAND CANYON VS FRESNO STATE				
VISITORS: GRAND CANYON 4-3						12/3/04 8pm at Fresno, CA (Save Mart Center)									
#	PLAYER	TOT-FG FG-FGA	3-PT FG-FGA	FT-FTA	REBOUNDS			PF	TP	A	TO	BLK	S	MIN	
					OF	DE	TOT								
34	Alonzo, Noe (f)	2-6	0-0	1-2	2	3	5	4	5	0	1	0	0	22	
41	Stevenson, Kevin (f)	3-7	0-0	2-2	2	1	3	4	8	1	1	0	1	32	
55	Odeh, Maen (c)	0-1	0-0	0-0	0	1	1	3	0	0	2	0	0	3	
10	Nelson, Ryan (g)	4-11	2-6	1-3	1	4	5	3	11	3	2	0	1	39	
23	Davis, Prileu (g)	5-15	4-9	2-2	2	0	2	3	16	4	4	0	1	40	
03	Green, Curtis	0-0	0-0	0-0	0	0	0	0	0	0	0	0	0	7	
22	Lee, Bryan	0-3	0-0	0-0	0	4	4	2	0	0	0	0	0	8	
32	Swain, Emil	6-10	0-2	0-1	0	3	3	3	12	1	2	0	1	25	
33	Ellsworth, Drew	0-1	0-1	0-0	0	0	0	0	0	0	0	0	0	0+	
50	Daye, Mike	0-3	0-0	1-2	3	5	8	3	1	0	3	0	0	30	
TEAM							3	3							
TOTALS		20-57	6-18	7-12	10	24	34	25	53	9	15	0	4	200	
					1ST HALF			2ND HALF			GAME				
TOTAL FG%		10-26 / 38.5%			10-31 / 32.3%			35.1% / DEADB							
3-Pt. FG%		1-5 / 20.0%			5-13 / 38.5%			33.3% / REBS							
F Throw %		3-5 / 60.0%			4-7 / 57.1%			58.3% / 2							

HOME TEAM: FRESNO STATE 3-0														
#	PLAYER	TOT-FG FG-FGA	3-PT FG-FGA	FT-FTA	REBOUNDS			PF	TP	A	TO	BLK	S	MIN
					OF	DE	TOT							
55	Al-Sayyad, Mustafa (f)	5-7	0-0	2-5	5	6	11	1	12	0	2	3	0	29
12	Marlow, Jack (c)	0-2	0-0	0-1	0	2	2	1	0	0	0	0	0	12
04	Morris, Donovan (g)	3-6	0-3	0-0	2	2	4	1	6	1	0	0	0	17
22	White, Dominique (g)	0-2	0-1	0-0	1	2	3	3	0	5	4	0	3	37
34	Coleman, Ja'Vance (g)	3-15	2-10	12-14	1	5	6	4	20	1	3	1	0	28
00	Ross, Carl	1-2	0-0	3-3	0	1	1	1	5	2	3	0	2	20
05	O'Neil, Dwight	1-5	0-2	0-0	0	3	3	3	2	3	1	0	0	17
15	Berry, Chris	3-6	0-0	4-7	1	6	7	3	10	1	2	1	0	27
21	Hernandez, Hector	4-7	0-2	0-0	4	3	7	3	8	0	2	0	1	13
TEAM							1	1						
TOTALS		20-52	2-18	21-30	15	30	45	20	63	13	17	5	6	200
					1ST HALF			2ND HALF			GAME			
TOTAL FG%		12-29 / 41.4%			8-23 / 34.8%			38.5% / DEADB						
3-Pt. FG%		1-7 / 14.3%			1-11 / 9.1%			11.1% / REBS						
F Throw %		3-8 / 37.5%			18-22 / 81.8%			70.0% / 3						

Officials: Mike Reed, Rick Batsell, Winston Stith **Technical fouls:** Grand Canyon-None. Fresno State-None.
Attendance: 11104 **ID:** 299528 **Game 2 - 2004 McCaffrey Classic**

Score by Periods	1st	2nd	Total
Grand Canyon	24	29	53
Fresno State	28	35	63

Fresno State advances to the 2004 McCaffrey Classic Championship



In the Consolation Game Grand Canyon faced Conference USA foe South Florida who later in the season upset #20 Cincinnati in the Conference USA Tournament advancing to that tournament's semifinal round. Against the 'Lopes USF struggled to score and looked to All-Conference USA selection Terrance Leather to lead the Bulls past a stingy 'Lopes defense 63-52. Like in the game against Fresno this match up went down to the wire and the Bulls beat GCU at the free throw line when it was time to foul.

Grand Canyon the Tournament's only Division II Team earned the respect of their opponents. " [My] hat's off to Grand



Official Basketball Box Score					SOUTH FLORIDA VS GRAND CANYON									
VISITORS: SOUTH FLORIDA 5-2					12/4/04 5:30 p.m. at Fresno, CA (Save Mart Center)									
#	PLAYER	TOT-FG FG-FGA	3-PT FG-FGA	FT-FTA	REBOUNDS			PF	TP	A	TO	BLK	S	MIN
					OF	DE	TOT							
21	Leather, Terrence (f)	9-12	0-0	0-0	2	7	9	3	18	2	7	1	1	40
44	Jones, Solomon (c)	3-6	0-0	1-2	4	4	8	4	7	1	5	6	3	31
01	Bryant, Marilyn (g)	2-5	0-0	2-2	1	4	5	2	6	0	1	1	1	24
03	Swift, Brian (g)	4-8	2-5	8-8	0	1	1	2	18	8	2	0	0	35
25	Holmes, James (g)	1-5	1-5	0-0	0	1	1	2	3	3	1	0	2	22
04	Brigman, Brandon	1-2	0-0	0-0	0	1	1	0	2	0	0	0	0	9
05	Prekevicius, Marius	2-3	1-1	0-0	0	0	0	5	0	2	0	0	0	16
23	Dennis, Collin	2-4	0-1	0-0	0	1	1	4	1	0	0	0	0	23
TEAM					1	3	4							
TOTALS		24-45	4-12	11-12	8	22	30	14	63	15	18	8	7	200
					1ST HALF			2ND HALF			GAME			
TOTAL FG%		10-27 / 37.0%			14-18 / 77.8%			53.3% / DEADB						
3-Pt. FG%		2-8 / 25.0%			2-4 / 50.0%			33.3% / REBS						
F Throw %		1-2 / 50.0%			10-10 / 100%			91.7% / 0						

HOME TEAM: GRAND CANYON 4-4														
#	PLAYER	TOT-FG FG-FGA	3-PT FG-FGA	FT-FTA	REBOUNDS			PF	TP	A	TO	BLK	S	MIN
					OF	DE	TOT							
34	Alonzo, Noe (f)	3-11	1-1	0-0	1	1	2	0	7	1	1	0	3	28
41	Stevenson, Kevin (f)	1-2	0-0	2-2	3	2	5	3	4	0	1	0	1	37
55	Odeh, Maen (c)	1-2	0-0	0-0	0	0	0	1	2	0	2	0	0	7
10	Nelson, Ryan (g)	3-7	2-4	0-0	0	0	0	5	8	8	4	0	2	26
23	Davis, Prileu (g)	6-11	2-6	1-1	0	4	4	1	15	1	2	0	0	40
03	Green, Curtis	0-0	0-0	0-0	1	0	1	1	0	0	1	0	0	9
32	Swain, Emil	4-7	2-3	0-1	0	3	3	2	10	3	5	2	0	27
50	Daye, Mike	2-7	0-0	2-4	2	2	4	2	6	1	2	0	0	26
TEAM					1	2	3							
TOTALS		20-47	7-14	5-8	8	14	22	15	52	14	18	2	6	200
					1ST HALF			2ND HALF			GAME			
TOTAL FG%		9-21 / 42.9%			11-26 / 42.3%			42.6% / DEADB						
3-Pt. FG%		2-5 / 40.0%			5-9 / 55.6%			50.0% / REBS						
F Throw %		1-3 / 33.3%			4-5 / 80.0%			62.5% / 0						

Officials: Terry Christman, Rick Batsell, Winston Stith					Technical fouls: South Florida-None. Grand Canyon-None.									
Attendance: ID-318817					Consolation Game - 2004 McCaffrey Classic									
Score by Periods		1st	2nd	Total										
Grand Canyon		23	40	63										
Fresno State		21	31	52										



All-Tournament Team

- Prileu Davis, Grand Canyon
- Terrance Leather, South Florida
- Solomon Forbes, Mississippi Valley St
- Sandford Speech, Mississippi Valley St
- Chris Berry, Fresno State
- **MVP:** Ja'Vance Coleman, Fresno State

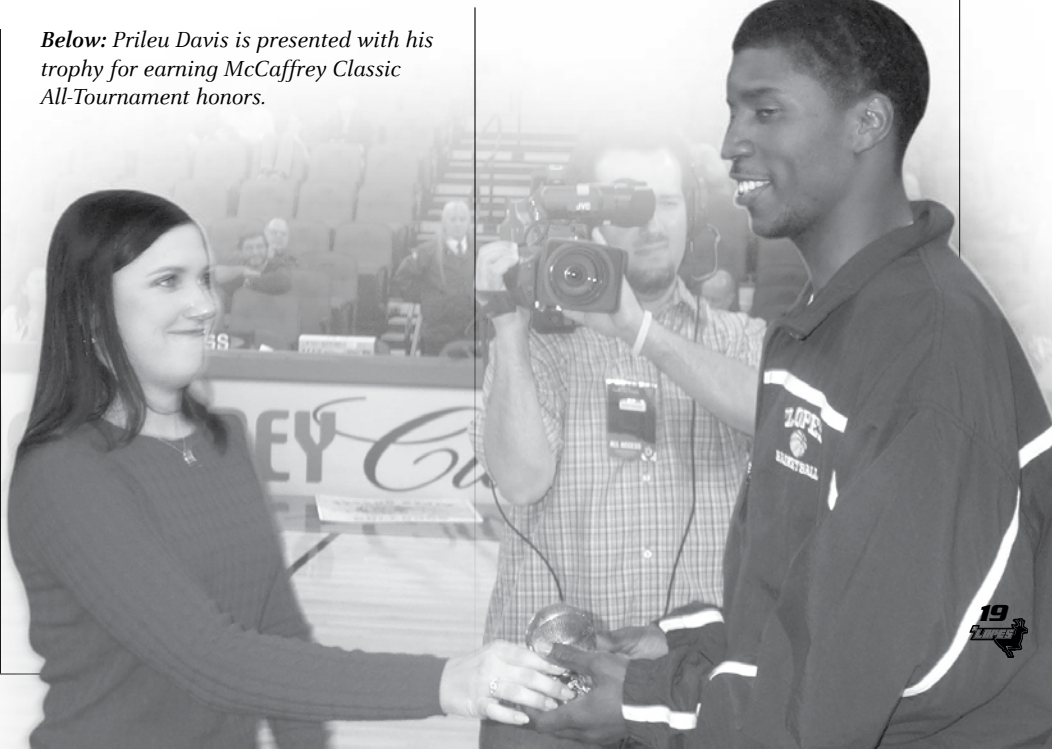
Tournament Results

- Game 1**
Mississippi Valley State 65, South Florida 57
- Game 2**
Fresno State 63, Grand Canyon 53
- Consolation Game**
South Florida 63, Grand Canyon 52
- Championship Game**
Fresno State 80, Mississippi Valley State 65

Canyon. They played like I thought they would. They came in and played very disciplined and very smart”, said than Fresno State Head Coach Ray Lopes. “We never could get on any big runs but that is a credit to Grand Canyon. They didn’t allow us. We fouled them or they got second shots off offensive rebounds. We just couldn’t get any runs. They got back and made us execute our half court offense. We weren’t shooting the ball well. But we’ll take the win”, added Lopes upon his narrow victory over GCU.

Senior, Prileu Davis earned a spot on the McCaffrey Classic All-Tournament Team averaging 15.5 points per game and holding Tournament MVP Ja’Vance Coleman of Fresno State to 3 of 15 shooting from the floor.

Below: Prileu Davis is presented with his trophy for earning McCaffrey Classic All-Tournament honors.





Record Book: Individual

MOST POINTS SCORED

(Game) 46—Ron Singleton vs.
Western New Mexico, 2/3/87
(Season) 747—Chad Briscoe, 1992-93
(Career) 2,195—Bayard Forrest, 1972-76

MOST FIELD GOALS MADE

(Game) 18—Ben Lindsey vs.
LaVerne, 2/17/62
(Season) 290—Wayne Bateman, 1966-67
(Career) 911—Bayard Forrest, 1972-76

MOST FIELD GOALS ATTEMPTED

(Game) 38—Wayne Bateman vs.
Pasadena, 2/14/67
(Season) 670—Wayne Bateman, 1966-67
(Career) 1,703—Bayard Forrest, 1972-76

HIGHEST FIELD GOAL PERCENTAGE

(Game) Minimum of 7 attempts: 1.000—
Craig Johnson (10-10) vs.
Drury 2/18/89;
George Hall (9-9) vs.

Northern Arizona, 1/17/78;
Horacio Llamas (9-9) vs.
Colorado Christian, 11/20/95;
John Janssen (7-7) vs.
CS Dominguez Hills, 1/19/01
(Season) .661 (109-165)—Blair Oliphant,
1988-89
(Career) .613 (236-385)—Blair Oliphant,
1987-89

MOST 3-POINT FIELD GOALS MADE

(Game) 9—Ron Singleton vs.
Western New Mexico, 2/3/87;
Chad Briscoe vs. Chapman,
12/30/92
(Season) 95—Chad Briscoe, 1992-93
(Career) 179—Chad Briscoe, 1991-93

MOST 3-POINT FIELD GOALS ATTEMPTED

(Game) 18—Chad Briscoe vs. Chapman,
12/30/92
(Season) 235—Chad Briscoe, 1992-93
(Career) 411—Chad Briscoe, 1991-93

HIGHEST 3-POINT FIELD GOAL PERCENTAGE

(Game) Minimum of 5 attempts:
1.000—Craig Johnson (6-6)
vs. Drury, 2/18/89;

Mike Ledbetter (5-5) vs.
Southern Nazarene, 1/19/88;
Tyrome Finney (5-5) vs.
UC-Riverside, 1/28/95
(Season) .512 (43-84)—Ron Akre,
1987-88
(Career) .496 (106-226)—Ron Akre,
1986-88

MOST FREE THROWS MADE

(Game) 20—Doug Baker vs.
St. Joseph's, 1/26/57
(Season) 150—Kevin Warren, 1984-85
(Career) 373—Bayard Forrest, 1972-76

MOST FREE THROWS ATTEMPTED

(Game) 24—Doug Baker vs. St. Joseph's
College, 1/26/57
(Season) 191—Kevin Warren, 1984-85
(Career) 534—Bayard Forrest, 1972-76

HIGHEST FREE THROW PERCENTAGE

(Game) Most attempts without a miss
(14-14)—Mike Haddow vs.
Missouri-Kansas City, 12/19/74
(Season) .903 (84-93)—Chad Briscoe,
1992
(Career) .900 (480-533)—Chad Briscoe,
1991-93

MOST REBOUNDS

(Game) 26—T.C. Dean vs.
Phoenix College, 1/14/58
(Season) 420—Bayard Forrest, 1972-73
(Career) 1,544—Bayard Forrest, 1972-76

MOST BLOCKED SHOTS

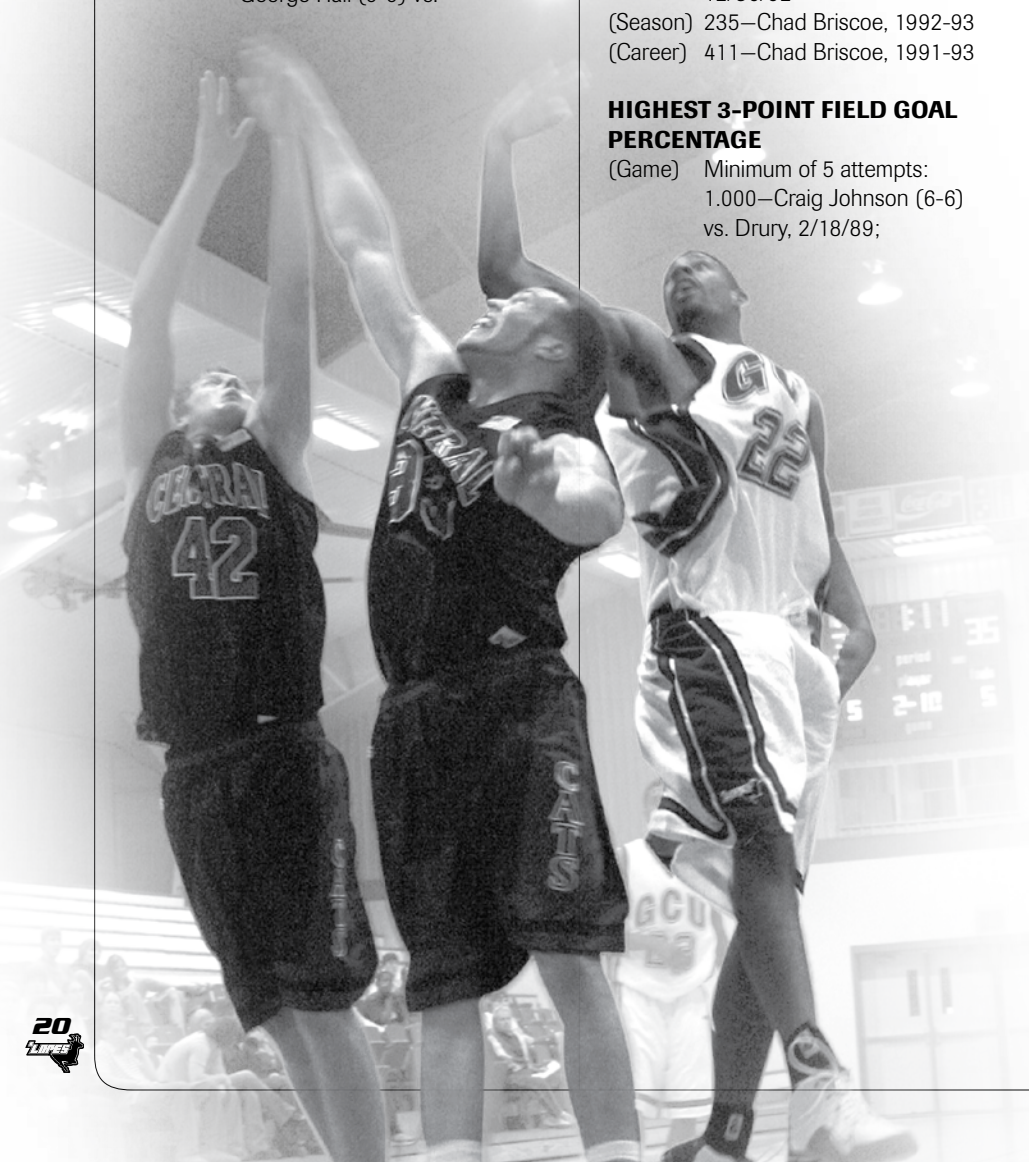
(Game) 10—Horacio Llamas vs. Clarke,
12/16/95
(Season) 106—Horacio Llamas, 1995-96
(Career) 172—Horacio Llamas, 1994-96

MOST ASSISTS

(Game) 14—Craig Johnson vs. Colorado
Christian, 12/9/89;
Elbert Meeks vs. Cal State
Chico, 3/13/93 & vs.
Southern Colorado, 11/27/93
(Season) 228—Craig Johnson, 1987-88
(Career) 455—Craig Johnson, 1987-89

MOST STEALS

(Game) 10—Jeff Fudge vs. The Master's
College, 11/16/85
(Season) 97—Rodney Johns, 1987-88
(Career) 198—Kenny Archbold, 1994-97



Record Book: Career

Based on two seasons or more with at least three field goals made per game the team played.

SCORING AVERAGE

Player (Seasons)	Avg	Gms
1. Chad Briscoe ('91-93)	22.6	58
Dana Pope ('92-94)	22.6	29
3. Wayne Bateman ('65-67)	21.1	51
4. Kevin Warren ('84-86)	20.0	56
5. Gerry Brewer ('62-64)	19.5	43

TOTAL POINTS

Player (Seasons)	Pts
1. Bayard Forrest ('72-76)	2,195
2. Duane Gagnon ('65-69)	1,490
3. Jim Irvine ('70-74)	1,420
4. Doug Baker ('55-59)	1,373
5. Chad Briscoe ('91-93)	1,313

TOTAL REBOUNDS

Player (Seasons)	Reb
1. Bayard Forrest ('72-76)	1,544
2. T.C. Dean ('56-59)	1,063
3. Jim Rice ('67-71)	891
4. Bill Price ('76-80)	862
5. Ben Lindsey ('59-62)	827

Record Book: Team

MOST POINTS SCORED

(Game) 144—vs. Arizona College of the Bible, 11/19/96
(Season) 4,093—1987-88

FEWEST POINTS SCORED

(Game) 25—vs. Gila College, 2/4/50
(Season) 282—1949-50

MOST FIELD GOALS MADE

(Game) 61—vs. West Coast Christian, 1/14/89
(Season) 1,532—1987-88

MOST FIELD GOALS ATTEMPTED

(Game) 116—vs. St. Michael's, 2/12/66
(Season) 2,934—1987-88

HIGHEST FIELD GOAL PERCENTAGE

(Game) .714 (40-56)—vs. LaVerne, 12/10/94
(Season) .522 (1,532-2,934)—1987-88

LOWEST FIELD GOAL PERCENTAGE

(Game) .246 (15-61)—vs. Fort Lewis, 12/20/71
(Season) .317 (542-1707)—1953-54

MOST 3-POINT FIELD GOALS MADE

(Game) 15—vs. Southern Colorado, 11/27/93
(Season) 255—1987-88

MOST 3-POINT FIELD GOALS ATTEMPTED

(Game) 34—vs. Bridgeport, 11/27/92
(Season) 620—1992-93

HIGHEST 3-POINT FIELD GOAL PERCENTAGE

(Game) .833 (5-6)—vs. Biola, 12/29/90
(Season) .429 (255-595)—1987-88

MOST FREE THROWS MADE

(Game) 44—vs. Texas College, 11/18/85
(Season) 774—1987-88

MOST FREE THROWS ATTEMPTED

(Game) 54—vs. Master's College, 1/28/89
(Season) 1,115—1987-88

HIGHEST FREE THROW PERCENTAGE

(Game) Most attempts without a miss: 24—vs. Biola, 2/12/77
(Season) .722 (465-644)—1979-80

LOWEST FREE THROW PERCENTAGE

(Game) .222 (2-9)—vs. New Mexico St., 1/10/84
(Season) .609 (465-764)—1952-53

MOST REBOUNDS

(Game) 78—vs. California Baptist, 12/17/65
(Season) 1,873—1987-88

FEWEST REBOUNDS

(Game) 8—vs. California Baptist, 2/2/80
(Season) 767—1952-53

MOST ASSISTS

(Game) 40—vs. West Coast Christian, 1/14/89
(Season) 801—1987-88

MOST STEALS

(Game) 34—vs. Arizona College of the Bible, 11/19/97
(Season) 368—1987-88

MOST PERSONAL FOULS

(Game) 35—vs. Southern Utah, 2/14/87
(Season) 776—1987-88

MOST WINS IN A SEASON

37—1987-88 (37-6)

MOST LOSSES IN A SEASON

24—2003-2004 (3-24)

LONGEST WINNING STREAKS

(Overall) 26 games—2/12/58 - 12/8/59
(Home) 61 games—12/13/74 - 12/30/78

HIGHEST TEAM SCORING AVERAGE

(Season) 96.8 ppg—1988-89

Record Book: Single-Season

Based on two seasons or more with at least three field goals made per game the team played.

SCORING AVERAGE

Player (Season)	Avg	Gms
1. Dana Pope ('93-94)	24.7	26
2. Wayne Bateman ('66-67)	24.2	27
3. Chad Briscoe ('92-93)	24.1	31
4. Kevin Warren ('85-86)	23.3	23
5. Ben Lindsey ('61-62)	23.2	22

TOTAL POINTS

Player (Season)	Pts	Gms
1. Chad Briscoe ('92-93)	747	31
2. Ron Singleton ('86-87)	726	38
3. Wayne Bateman ('66-67)	654	27
4. Dana Pope ('93-94)	642	26
5. Rodney Johns ('87-88)	640	43

TOTAL REBOUNDS

Player (Season)	Reb	Gms
1. Bayard Forrest ('72-73)	420	29
2. Bayard Forrest ('74-75)	415	33
3. T.C. Dean ('57-58)	402	20
4. Bayard Forrest ('73-74)	385	30
5. Ben Lindsey ('59-60)	342	24



Record Book: Recent Leaders

POINTS SCORED			ASSISTS			3-POINT FIELD GOAL PERCENTAGE				
	Avg	Total		Avg	Total					
'95-96	Horacio Llamas	17.5	508	'95-96	Kenny Archbold	2.9	84	'95-96	Larry Reed	.438
'96-97	Kenny Archbold	16.2	469	'96-97	Larry Reed	2.5	64	'96-97	Bill Barquin	.405
'97-98	Jerry Allen	20.1	542	'97-98	Jerry Allen	3.7	99	'97-98	Bill Barquin	.348
'98-99	Prince Edmonds	13.2	342	'98-99	Prince Edmonds	3.9	102	'98-99	Spencer Inman	.348
'99-00	Toure Knighton	13.1	353	'99-00	Zach Miller	3.0	86	'99-00	Toure Knighton	.443
'00-01	Toure Knighton	14.7	382	'00-01	Toure Knighton	3.2	82	'00-01	Toure Knighton	.351
'01-02	Del Somers	17.8	428	'01-02	Jabari Riggins	3.2	82	'01-02	Del Somers	.351
'02-03	Del Somers	16.8	454	'02-03	Will Polk, Jr.	1.9	52	'02-03	Will Polk, Jr.	.382
'03-04	Royce Hall	16.0	417	'03-04	Curtis Green	2.6	70	'03-04	Curtis Green	.300
'04-05	Noe Alonzo	16.2	477	'04-05	Ryan Nelson	5.0	124	'04-05	Noe Alonzo	.437

REBOUNDS			FIELD GOAL PERCENTAGE			FREE THROW PERCENTAGE			
	Avg	Total							
'95-96	Horacio Llamas	9.2	268	'95-96	Horacio Llamas	.546	'95-96	Larry Reed	.797
'96-97	Tony Gillette	6.1	177	'96-97	Jerry Allen	.584	'96-97	Larry Reed	.763
'97-98	Jerry Allen	5.8	157	'97-98	Nate Scott	.529	'97-98	Prince Edmonds	.726
'98-99	Andre Hall	6.2	167	'98-99	Andre Hall	.498	'98-99	Enrique Zuniga	.800
'99-00	Toure Knighton	7.3	199	'99-00	Eddie Turner	.526	'99-00	Lee McCowan	.759
'00-01	Toure Knighton	6.9	180	'00-01	Eddie Turner	.544	'00-01	Jovian Dobrzanski	.809
'01-02	Eddie Turner	5.5	149	'01-02	Eddie Turner	.565	'01-02	Jovian Dobrzanski	.786
'02-03	John Janssen	7.9	212	'02-03	John Janssen	.537	'02-03	Del Somers	.736
'03-04	Mike Daye	7.9	150	'03-04	Bryan Lee	.520	'03-04	Frank Carranza	.833
'04-05	Noe Alonzo	5.1	147	'04-05	Bryan Lee	.542	'04-05	Noe Alonzo	.794



All-Time Letterwinners:

A

Acker, Joe (1970-71)
 Akre, Ron (1986-88)
 Alexander, Bobby (1996-97)
 Alexander, T.A. (1981-82)
 Allen, Jerry (1996-98)
 Allen, Virgil (1980-81)
 Allison, Joey (1989-91)

Alonzo, Noe (2004- Present)

Alvarado, Andy (1973-74)
 Amoaku, Kwaku (1998-00)
 Anfinson, Dave (1959-61, 62-63)
 Archbold, Kenny (1994-97)
 Arvisu, Ray (1977-79)
 Aycock, Lloyd (1959-62)

B

Babcock, David (1978-79)
 Babcock, Rob (1970-74)
 Bacon, Richard (1975-79)
 Baird, Bill (1958-59)
 Baker, Charlie (1952-56)
 Baker, Doug (1955-59)

Baker, Kweli (1999-01)
 Baker, L.E. "Sharky" (1952-54)
 Baker, Randy (1954-55)
 Baker, Robin (1978-80)
 Barfield, Larry (1964-65)
 Barnes, Daryl (1958-59)
 Barnes, John (1949-50)
 Barnes, Paul (1951-52)
 Barnes, Richard (1953-54)
 Barnett, Andre (1991-92)
 Barquin, Bill (1996-98)
 Bartzis, Pete (1978-79)
 Barwick, Tommy (1957-58)
 Bateman, Wayne (1965-67)
 Baxter, Rod (1971-73)
 Benion, David (1979-80)
 Bisbee, Chuck (1955-59)
 Blake, Jack (1959-60)
 Boatright, Mike (1980-84)
 Bonham, Dale (1959-60)
 Bretz, Gary (1971-73)
 Brewer, Gerry (1962-63, 63-64)
 Briscoe, Chad (1991-93)
 Brower, Tim (1979-80)

Brown, Garrett (2002-2003)
 Brown, Phil (1963-65)
 Brumback, Everett (1949-50)
 Burdette, Scott (1973-75)
 Burnside, Joe (1968-70)
 Bush, Steve (1963-64)
 Buzzard, Bob (1961-62)
 Byron, Rudy (1997-98)

C

Campbell, Joe (1978-79)
 Capriotti, James (1994-95)
 Carlile, Jim (1966-67)
 Carranza, Frank (2002-2004)
 Carter, Billy (1982-84)
 Carter, Jim (1954-57)
 Carter, Maurice (1990-92)
 Cathey, Curtis (1994-95)
 Cecil, Dave (1984-85)
 Chase, Bob (1969-71)
 Chaney, Tariq (1999-00)
 Chin, Marques (1999-00 RS, 00-01)
 Churchill, Jeff (1976-80)
 Collins, Jim (1969-71)

Conner, Jerry (1960-62)
 Cordova, Joe (1962-63)
 Corley, Bob (1966-67)
 Corley, Guy (1994-96)
 Costello, Chris (2000-01)
 Craig, Larry (1982-83)
 Craig, Les (1975-76)
 Crain, Johnny (1957-58)
 Creech, Dave (1961-62)
 Crow, Jerry (1954-55)

D

Dahlberg, Jeremy (2003-04)
 DaLessio, Ron (1987-88)
 Daniels, Arthur (1999-2002)
 Darrington, Craig (1971-73)
 Davis, Bob (1949-53)
 Davis, Prileu (2004-2005)
Davis, Rich (2005-Present)
 Davis, Rick (1983-85)
 Dawson, Ed (1976-78)
 Daye, Mike (2003-2005)
 Dean, Howard (1954-58)
 Dean, T.C. (1956-59)
 Deines, Bob (1957-59)



All-Time Letterwinners:

Dobrzanski, Jovian (2000-02)
 Dollar, Lee (1966-67)
 Duncan, Tony (1979-81)
 Dunse, Steve (1971-74)
 Dyer, Mark (1987-90)

E

Edmonds, Prince (1997-99)
 Edwards, Andre (1989-90)
 Ellsworth, Drew (2004-2005)
 Embry, Tom (1960-61)
 Enge, Robert (1987-89)
 Ernst, Gary (1968-70)
 Eshelman, Don (1955-57)
 Everett, David (1971-76)
 Eymann, Chris (1992-94)

F

Farmer, Stan (1968-70)
 Farrell, Charlie (1978-80)
 Faver, Fred (1961-62)
 Fearen, Ray (1982-83)
 Finney, Tyrome (1994-96)
 Foote, Ernie (1965-68)
 Forrest, Bayard (1972-76)
 Forrest, Dan (1950-54)
 Forrest, Jon (1973-77)
 Forrest, Nelson
 (1949-51, 53-55)
 Forrest, Truett (1972-76)
 Fossum, John “Dub” (1962-66)
 Frank, Noel (1960-62)
 Franklin, Jim (1953-55)
 French, Bill (1963-65)
 Fudge, Jeff (1985-86)

G

Gagnon, Duane (1965-69)
 Gaines, Cliff (1989-91)
 Gallagher, Bob (1985-88)
 Gantt, Bobby (1985-86)
 Garcia, ??? (1950-51)
 Gardner, Jack (1950-52)
 Garner, Dante (2001-03)
 Gast, Keith (1969-71)
 Geer, Nathan (1994-96)
 Geerders, Gijs (1989-90)
 George, Bill (1956-58)
 Gilbert, Archie (1956-57)
 Gilchrist, Wayne (1980-82)

Gillette, Tony
 (1992-93, 1996-97)
 Gilliam, Gary (1960-63)
 Gillis, Bryan (1982-83)

Glenn, Andray (2005-Present)

Gonzales, David (2005-Present)

Gonzales, Josh (1994-96)
 Goodere, Justin
 (1998-99 RS, 99-00)
 Gorraiz, Pete (1951-54)
 Gottlieb, Dan (1999-01)
 Graves, John (1983-84)
 Graves, Ricky (1984-85)
 Gray, Bob (1956-57)
 Gray, Brian (1980-82)
 Green, Curtis (2003-2005)
 Greene, Mike (1986-87)
 Greer, Bert (1950-54)
 Greer, Ricky (2003-2005)
 Grindatto, Jean-Marc
 (1983-85)

Grouthaus, Mike (2004-Present)

Gutierrez, Fredy (1993-94)

H

Haddow, Mike (1973-75)
 Hall, Andre (1997-99)
 Hall, George (1976-78)
 Hall, Nelson (1985-86)
 Hall, Royce (2003-04)
 Hamilton, Danny (1983-84)
 Hanley, Terry (1962-66)
 Hansen, Nathan (1995-98)
 Harris, Sean (2001-03)
 Harrison, Toby (1981-82)
 Harrison, Wayne (1974-77)
 Hayes, Chester (1990-94)
 Hegler, Bill (1956-59)
 Helton, Eugene (1971-73)
 Helton, J.C. (1965-68)
 Henderson, Reggy (1984-85)
 Henige, Bob (1985-88)
 Herrington, Hank (1977-79)
 Hersha, Derek (1995-97)
 Hester, Seneca (1998-99)
 Hightower, Rodney (1973-75)
 Hill, Bob (1952-56)
 Hines, Don (1993-94)

Hodo, Dewan (1983-84)
 Holm, George (1975-77)
 Holt, Dennis (1966-67)
 Holthaus, Todd (91-93)
 Hopewell, Allen (1968-69)
 Hutchinson, Tom (1980-81)
 Hudgens, Trent (1992-94)
 Hunter, Brian (2002-04)

I

Inman, Spencer (1998-2000)
 Irvine, Jim (1970-74)

J

Jackson, Olint (1951-52)
 Jackson, Mickey (1956-57)
 Jackson, Ray
 (1977-79, 82-83, 84-85)
 Jackson, Roger (1963-65)
 Jakes, Dave (1963-64)
 James, Darrell (1984-87)
 Jannssen, John (2000-03)
 Johns, Rodney (1986-88)
 Johnson, Craig (1987-89)
 Johnson, Davin (1997-98)
 Johnson, Mike (1989-92)
 Johnson, W. Estevan (1993-94)
 Johnston, Jim (1961-62, 63-64)
 Jones, Carlton (1967-69)
 Jones, Derek (1989-91)
 Jones, Dormin (1983-84)
 Jones, Elliot “Dinky” (1982-83)
 Jones, John (1990-91, 92-93)
 Jones, Steve (1988-90)
 Joyce, James (1975-76)

K

Karre, Milee (2005-Present)

Karuletwa, Jack (1993-94)
 Kay, Wickey (1954-55)
 Kelley, Mel (1995-96)
 Key, Damon (1999-00)
 Kennedy, Kevin (1984-85)
 King, Leland (1985-86)
 Knight, Steve (1960-61)
 Knighton, Touré (1997-01)
 Knox, Al (1953-55)
 Kopke, Jerry (1955-56)
 Kovacic, Emilio (1987-88)

Kulovitz, Bob (1982-83)
 Kyle, Anthony (1992-93)

L

Lamb, Terry (1979-81)
 Langford, Eric (1994-96)
 Lansman, Gary (1972-73)
 Lawal, Abidemi (1977-78)
 Lawson, G. (1950-51)
 Layne, Charles (1967-68)
 Leach, Ken (1959-60)
 Lebeck, Ken (1985-86)
 Ledbetter, Mart (1973-74)
 Ledbetter, Mike (1987-89)

Lee, Bryan (2003-2005)

Lewis, Ron (1964-68)
 Lindsey, Ben (1959-62)
 Llamas, Horacio (1994-96)
 Lloyd, Jackson (1970-71)
 Lopez, Dave (1967-68)
 Lopez, Mario (1988-89)
 Luster, Rick (1972-74)

M

Manning, Vincent (1991-93)
 Marks, Ramon (1992-94)
 Martin, Dan (1976-77)
 Martin, Harry (1958-62)
 Mattson, Gary (1957-61)
 Mayberry, Rob (1981-82)
 McCormick, Charles
 (1968-69, 70-71)
 McCormick, Charlie (1979-81)
 McCowan, Lee (1999-00)
 McDaniel, David (1989-90)
 McFerrin, Ted (1980-81)
 McGlothlin, Roger (1968-69)
 McGough, Byron (1951-53)
 McGovern, Sean (1991-92)
 McIver, Scott (1980-82)
 McKinney, Anthony (1981-83)
 McKinney, Rhon (1990-91)
 Mead, Randy (1982-83, 84-85)
 Meeks, Elbert (1992-94)
 Menefee, Jerry (1950-54)
 Merkel, Steve (1968-69)
 Miller, Dow (1949-50)
 Miller, Evert (1960-61)
 Miller, Zach (1999-00)
 Mitchell, Cleveland (1985-86)



All-Time Letterwinners:

Mitchell, Dwain (1970-71)

**Mohammed, Caliph
(2002-04, 2005-Present)**

Monteverde, Rodrigo (1984-86)
Mooney, Anthony (1995-96)
Moorer, Chuck (1976-78)
Mora, Justin (1997-99)
Morgan, Cecil (1951-52)
Morrison, Kent (1954-55)
Moss, Kerry (1991-92)
Moss-Kelly, Steve (1999-00)
Motsinger, Tom (1985-86)
Mullins, Kenny (1999-2001)
Murphy, Glenn (1949-50)
Murphy, Jim (1966-68)
Murphy, Mark (1996-97)

N

Neill, Aaron (1993-94)
Nelson, James (1966-68)

**Nelson, Ryan
(2004-Present)**

Newman, Ronnie (2001-03)
Newsom, Damien (2001-02)
Nichols, Chad (1992-93)
Nikolaus, D.L. (1965-66)
Nikolaus, Gerald (1965-67)
Nite, Ted (1968-70)
Nix, Paul (1960-63)
Noble, Bobby (1993-95)
Norris, Al (1992-93)

O

Oates, Jeff (1984-85)
Odeh, Maen (2004-2005)
Odhiambo, Joseph (1988-91)
Offerman, Brent (1956-58)
O'Guinn, Michael (1995-96 RS, 1996-97)
Oliphant, Blair (1987-89)
Oliver, Mike (1999-00)
Ondigo, Joshua (1988-92)
Osborne, Mike (1974-78)
Otis, Kelvin (1997-99)

P

Pappas, James (1977-79)
Pappas, Steve (1974-76)
Parrish, Brad (1983-84)
Payne, Richard (1967-68)

Payne, Wayman (1981-82)

Peoples (King), Darrell (1991-93)

Pettaway, Jason (2004-2005)
Pile, Allen (1963-65)
Pittman, Carter (1981-83)
Pitts, Denford (1949-50)
Polk, Willie (1977-79)
Polk, Will, Jr. (2002-03)
Poole, Duane (1975-77)
Pope, Dana (1992-94)
Powell, Carl (1981-83)
Prettyman, Leigh (1969-70)
Price, Bill (1976-80)
Prock, Dan (1967-68)
Pyers, Jim (1979-83)

Q

Quay, Bob (1951-52)

R

**Ramirez, Tareq
(2005-Present)**

Reed, Larry (1995-97)
Reno, Mike (1970-71)
Rice, Jim (1967-71)
Ricketts, Mike (1979-81)
Riggins, Jabari (2000-2004)
Rising, Melvin (1952-56)
Rissi, John (1979-81)
Roberts, Jerry (1955-56)
Robinette, Clarence (1950-54)
Rock, Jim (1957-58)
Rogers, Denny (1980-81)
Ross, Gerald (1978-80)
Ross, Joe (????)
Rucker, George (1985-86)

S

Santa Cruz, Rudy (1971-73)
Schmidt, Dan (1974-76)
Scipo, Ron (1983-84)
Scott, Nate (1997-99)
Scroggins, Cecil (1985-87)
Self, Delbert (1957-58)
Seamster, Alvin "Buddy" (1951-55)
Senitza, Rick (1968-70)
Shannon, Quincy (1998-2000)
Shikles, Don (1976-77)

Shipp, Ed (1956-60)

Shirley, Jim (1962-63)
Showers, Mark (1983-85)
Shuey, Tom (1993-95)
Simmons, Shelton (1994-95 RS, 1995-97)
Singleton, Ron (1986-87)
Slade, George (1977-78, 79-80)

**Smith, Sonny
(2005-Present)**

Somers, Del (2001-03)
Sorrensen, Lew (1955-58)
South, Lynn, (1962-66)
Speckman, Joel (1991-93)
Staples, Cornell (1982-84)
Starkey, ??? (1949-50)
Stevenson, Kevin (2004-2005)
Steward, Anthony (1989-90)
Stewart, Murphy (2001-03)
Stoglin, James (1984-85)
Stokes, Nate (1976-78)
Stout, Bob (1974-76)
Stringer, H.K. (1949-51)
Stroman, Terrance (2002-03)
Sullivan, Bill (1965-68)
Swain, Emil (2004-2005)
Swenton, Matt (2000-01)
Swindle, Larry (1963-64)
Swinford, Mike (1968-70)

T

Tackett, Ron (1958-59)
Tadema, Cliff (1974-75)
Taylor, Charlie (1961-62)
Taylor, Eric (1988-91)
Teague, Bernie (1971-72)
Thomas, Ken (1957-61)
Thompson, Dwaine (1993-94)
Thompson, Orin (1960-61)
Thompson, Richard (1964-65)
Tidmore, Maynard (1959-62)
Traylor, Jack (1968-69)
Trevino, Rod (1988-89)
Tripp, Homer (1975-76)
Tucker, Kevin (1983-85)
Turner, Doug (1958-60)
Turner, Eddie (1999-2002)
Turner, Milt (1967-68)

U

Upton, Greg (1968-71)

V

VanderPloeg, Steve (1972-75)
Vaughn, Mike (1988-89)
Vinson, Joe (1992-93)
Vujas, Mike (1969-70)

W

Wadell, Ron (1966-67)
Wahlstrom, David (1994-95)
Walker, Tom (1949-50)
Walton, Michael (1983-84)
Ward, Gary (1985-87)
Ware, Gary (1987-88)
Warren, Bo (1962-66)
Warren, Kevin (1984-86)
Watson, Bob (1949-50)
Weaver, Joe (1963-64)
Webb, Brian (2001-02)
Welch, Mike (1981-82)
Wells, Scott (1983-84)
Wesson, Jim (1956-57)
Wheeler, Mark (1988-89)
White, ??? (1949-50)
White, Darius (1992-93)
Whitmer, Roy (1957-58)
Wilcox, Earl (1969-70, 72-73)
Wildenborg, Ethan (1992-93)
Williams, Bryan (1983-84)
Williams, Chris (1986-87)
Williams, Danl (1987-89)
Williams, Dave (1959-60)
Williams, John (1996-97)
Williford, Darryl (1988-90)
Winters, Bill (1954-55)
Wolf, Greg (1972-73)
Woods, Maurice (1985-86)
Wyatt, James (1964-66)

Y

Yokley, Dawaine (1986-87)
Young, Danny (1985-87)
Youngbloom, Jim (1957-58)

Z

Zuniga, Enrique (1997-99)



All-Time Series vs. Opponents

OPPONENT	GCU RECORD
Abilene Christian University, TX	1-0
Adams State College CO	8-11
Alaska-Anchorage, Univ. of	8-4
Alaska-Fairbanks, Univ. of	4-1
Albertson College, ID	4-0
Albuquerque, University of	2-1
Alcorn State University, MS	1-0
Ambassador College, CA	3-0
Anderson University, IN	1-0
Arizona College of the Bible	1-0
Arizona, University of	0-4
Arizona, University of (Freshmen)	2-4
Arizona State University	0-1
Arizona State University (Freshmen)	3-8
Artesia College, CO	3-1
Assumption College, MA	1-0
Athletes In Action	1-2
Auburn University-Montgomery, AL	1-0
Augustana College, IL	0-1
Azusa Pacific University, CA	5-8
Bethany College, KS	1-0
Biola University, CA	10-8
Black Hills State, SD	1-0
Briar Cliff College, IA	2-0
Brigham Young University-Hawaii	1-2
Caldwell College, NJ	2-0
California Baptist College	52-8
California Baptist College, Covina	10-1
California Lutheran College	13-7
Cal Poly State Univ., Pomona	15-17
Cal State Univ., Bakersfield	10-18
Cal State Univ., Chico	9-7
Cal State Univ., Dominguez Hills	28-20
Cal State Univ., Hayward	1-0
Cal State Univ., Los Angeles	12-17
Cal State Univ., Monterey Bay	0-1
Cal State Univ., Northridge	2-3
Cal State Univ., Sacramento	1-1
Cal State Univ., Stanislaus	11-8
Cal State Univ., San Bernardino	5-16
California Davis, Univ. of	4-12
California Irvine, Univ. of	2-0
California Riverside, Univ. of	18-11
California San Diego, Univ. of	7-4
California Western College	2-0
Cameron University, OK	0-2
Catawba College, NC	1-0
Central Arkansas, University of	2-0
Central Methodist College, MO	1-0
Central Oklahoma, University of	1-1
Central State University, OH	2-0
Central Washington	1-1
Chaminade University, HI	5-3
Chapman University, CA	4-4
Christian Brothers	0-1
Christian Heritage College, CA	8-2
Claremont College, CA	3-1
Claremont-Mudd University, CA	2-0
Clarion University, PA	0-1
Clarke College, IA	1-0

OPPONENT	GCU RECORD
Colorado Christian University	2-1
Colorado School of Mines	8-0
Concordia College, NE	3-1
Concordia Lutheran College, TX	1-0
Concordia University, CA	1-0
Cumberland College, KY	1-0
Dallas, University of	1-0
Davis-Monthan Air Force Base	6-5
Denver, University of	1-0
Doane College, NE	1-0
Drury College, MO	3-2
East Central University, OK	1-0
East Texas State University	1-0
East Stroudsburg University, PA	1-0
Eastern Arizona Community College	5-23
Eastern Michigan University	0-1
Eastern New Mexico University	26-11
Emporia State University, KS	2-1
Findlay, University of, OH	0-1
Ferris State, MI	0-1
Florida International University	1-0
Fort Huachuca, AZ	1-0
Fort Hays State University, KS	3-1
Fort Lewis College, CO	23-14
Fresno Pacific University, CA	3-1
Fresno State	0-1
Greenville College, IL	2-0
Harmon McFarland, AZ (AAU)	1-0
Hastings College, NE	1-0
Hawaii-Hilo, University of	4-1
Hawaii Pacific University	2-0
Hope International, CA	1-0
Husson College, ME	1-0
Illinois Wesleyan University	1-0
Imperial Valley College, CA	4-0
Indiana Penn University	0-1
Indiana U.-Purdue U.-Indianapolis	2-0
Jacksonville State University, FL	0-2
Kansas State University	0-1
Langston University, OK	2-1
LaVerne, University of, CA	24-6
Lewis and Clark College, OR	1-0
Litchfield Naval Air Station, AZ	1-0
Los Angeles Pacific College	4-0
Lubbock Christian University, TX	4-1
Luke Air Force Base, AZ	12-7
Marymount College, KS	0-1
The Master's College, CA	20-0
Mesa State College, CO	14-4
Metropolitan State College, CO	2-1
Millikin University, IL	1-0
Mid-America Nazarene College, KS	1-0
Midwestern State University, TX	1-0
Minnesota-Duluth, University of	1-0
Minot State University, ND	1-0
Missouri-Kansas City, Univ. of	2-0
Missouri-Rolla, Univ. of	1-0
Missouri-St. Louis, Univ. of	1-0
Missouri Western State College	0-2
Montana State Univ.-Billings	4-2



All-Time Series vs. Opponents

OPPONENT	GCU RECORD
Moorhead State, MN	1-0
Nebraska Wesleyan University	1-0
Nebraska-Kearney, Univ. of	3-0
Nebraska-Omaha, Univ. of	1-0
Nellis Air Force Base, NV	1-0
Nevada-Las Vegas, Univ. of	3-2
Newberry College, SC	0-1
New Hampshire College	0-1
New Mexico Highlands University	24-10
New Mexico Military Institute	1-1
New Mexico State University	0-1
New Mexico, University of	0-2
North Central College, IL	1-0
North Dakota, University of	2-1
North Park College, IL	1-0
Northern Arizona University	14-30
Northern Arizona Univ. (Freshmen)	2-8
Northern Montana College	2-0
Northwest Nazarene College, ID	1-2
Northwestern Oklahoma State Univ.	0-1
Northwestern University, IA	1-0
Norton Air Force Base, CA	1-0
Notre Dame, College of, CA	1-0
Occidental College, CA	13-0
Oklahoma City University	2-0
Olivet Nazarene College, IL	1-0
Orange State College, CA	0-1
Oral Roberts University, OK	0-2
Ottawa University, KS	1-0
Pacific Christian College, CA	5-0
Pacific Lutheran University, WA	1-0
Palo Verde College, CA	10-2
Panhandle State University, OK	2-1
Pasadena College, CA	6-8
Phoenix College	4-7
Point Loma Nazarene College, CA	24-13
Pomona College, CA	2-1
Pomona-Pitzer College, CA	2-0
Puget Sound, University of, WA	1-1
Rider College, NJ	1-0
Regis University, CO	2-1
Rockhurst College, MO	1-0
Rockmont College, CO	1-0
St. Ambrose University, IA	1-0
St. Anselm, NY	0-1
St. Joseph's College, NM	4-9
St. Martin's, WA	1-0
St. Mary's College, TX	1-0
St. Thomas, College of, MN	12-3
St. Xavier University, IL	1-3
San Bernardino College, CA	0-1
San Diego State University, CA	1-0
San Diego, University of, CA	10-8
San Fernando State College, CA	1-0
San Francisco, University of	0-1
San Francisco State University	11-5
Santa Fe, College of, NM	32-19
Seattle University	1-0
Seattle Pacific University	7-3
Simpson University	1-0

OPPONENT	GCU RECORD
Sonoma State University, CA	7-7
South Carolina-Spartanburg, Univ. of	0-1
South Dakota, University of	1-0
South Dakota State University	0-1
South Florida	0-1
Southern California College	14-2
Southern Colorado, University of	8-4
Southern New Hampshire	0-1
Southern Illinois Univ.-Edwardsville	1-0
Southern Nazarene University, OK	3-0
Southern Utah University	36-15
Southwestern College AZ	2-0
Southwestern College KS	1-0
Southwestern College MO	1-0
Southwestern Missouri State Univ.	0-2
Sul Ross State University TX	2-0
Tabor College KS	1-0
Tarleton State University TX	2-0
Texas College	1-0
Texas Lutheran College	1-0
Texas Wesleyan College	1-1
Transylvania University KY	0-1
U.S. International University CA	4-0
Upland College CA	2-0
Utah Valley State	0-1
Virginia State University	1-0
Walker Air Force Base	0-1
Walsh College OH	0-1
Washburn University KS	0-1
Wassuk College NV	1-0
Wayland Baptist University TX	2-4
Wayne State NE	0-1
Waynesburg College PA	1-0
Weber State College UT	0-1
West Coast Christian College CA	1-0
West Georgia College	0-1
West Texas A&M University	0-1
Western State College CO	13-5
Western Montana College	2-1
Western New Mexico University	34-34
Western Oregon University	1-0
Western Washington University	0-1
Westminster College UT	3-0
Westmont College CA	8-8
Wheaton College IL	1-0
Whittier College CA	1-0
Willamette University OR	1-0
Williams Air Force Base AZ	11-5
William Jewell College MO	1-1
Winona State University MN	0-1
Wisconsin-Oshkosh, Univ. of	1-0
Wisconsin-Parkside, Univ. of	1-0
Wisconsin-Stevens Point, Univ. of	1-0
Yuma Air Force Base AZ	1-0

2005-06 Opponents in Bold

From Canyon to the NBA...

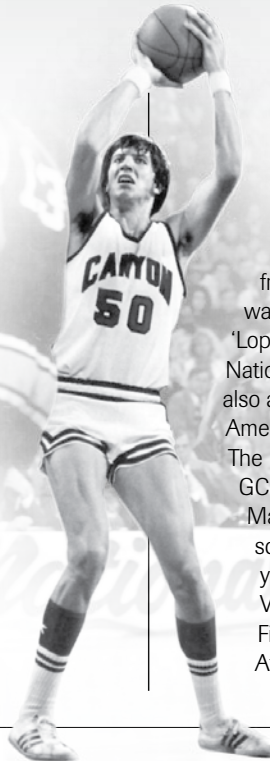
Bay Forrest



Bay Forrest became the first Antelope to move into the NBA when he was a member of the Phoenix Suns from 1977-1979.

Forrest played in over 139 games before retiring in 1980 with a back injury. Forrest

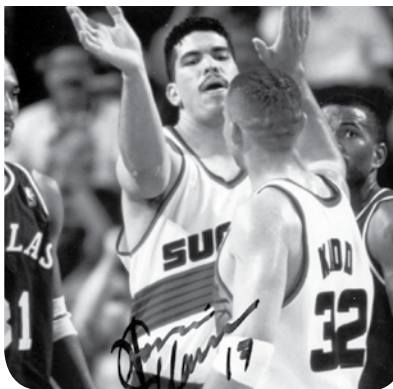
averaged 4.1 points per game in his career while averaging 15.3 minutes a game with the Suns. The Suns made a playoff appearance each season Forrest was in the NBA. Forrest was a member of the Antelopes Basketball team from 1972-1976 and still has his name atop many of the records at Canyon. His 2,195 career points and 1,544 career rebounds have been untouchable since his departure from campus in 1976. Forrest also has the career mark in field goals made and attempted, career free throws made and attempted and in addition



to his career rebound record he also holds 3 of the top 5 rebounding seasons by an Antelope with the top mark of 420 coming in the 1972-73 season when he was only a freshman. In 1974-1975 Forrest was a key member in leading the 'Lopes to their first of three NAIA National Championships and was also a 3-time NAIA First Team All-American in 1974, 1975 and 1976. The Forrest tradition continued at GCU with his youngest daughter Mandy attending on a volleyball scholarship. Mandy was a four-year letterwinner in Women's Volleyball and in 2003 earned First Team All-California Collegiate Athletic Association honors.

Horacio Llamas

Horacio Llamas joined Bay Forrest as the second Antelope to jump as a player to the NBA ranks when he was a member of the Phoenix Suns from 1996-1998. Llamas became the First Mexican born player to play in the NBA when he made his debut in 1996. Llamas hailed from El Rosrio Sinaloa, Mexico. Llamas played in 28 games over his 2-year NBA career with a career high 20 games during the 1997-1998 season. Llamas was a 2-year letterwinner at GCU from 1994-96. During his senior year Llamas earned Basketball Times Division II "Player of the Year" honors in addition

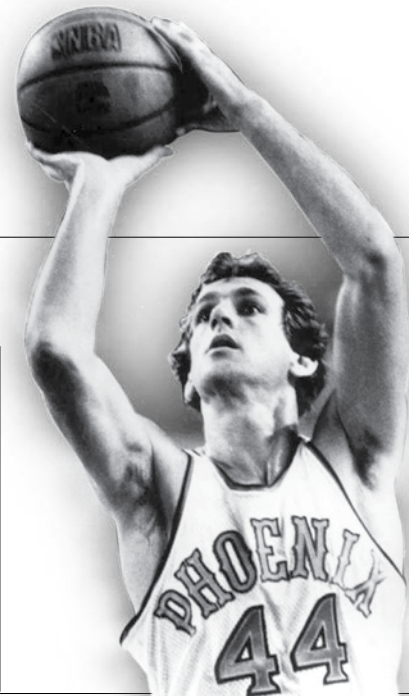


to being named a First Team All-American. Llamas holds every block shot record at the school with 172 in his 2-year career, 106 in a season and 10 in a game. Llamas earned First Team All-CCAA honors twice and was MVP of the CCAA Tournament in 1995.

Paul Westphal

Paul Westphal enjoyed a 12-year NBA career with the Celtics, Suns, Knicks and the Superonics before joining GCU as the Head Coach of the Basketball program in 1986. In two years as Head Coach, Westphal went 63-18 and won the NAIA National Championship in 1988. In 1993 Westphal was named Head Coach of the Phoenix Suns. The

Suns went 62-20 his first season losing to the Chicago Bulls in the NBA finals. Westphal coached 7 seasons in the NBA going 267-159 good for a .626 winning percentage with the Suns and Superonics. Westphal is now in his 5th season as the Head Coach at Pepperdine University in Malibu, California.





Living Legacy: Dr. Dave Brazell Apart of GCU Athletics Since 1951

There is a beginning to every great story, and in the chronicles of Grand Canyon University that beginning is Dr. Dave Brazell.

Coach Brazell and his wonderful wife of the past fifty-nine years, Mildred Jeanette (“Mrs. B”), have spent fifty-four of those years wearing the purple and white while cheering on the Antelopes. Over that span, they have been responsible for developing the rich tradition that makes up a Canyon athlete and more importantly, a Canyon graduate. In life you can’t know where you are going until you know where you have been. Understanding the sacrifices of those who have walked before you, so the current students and student athletes can have what they have today, is the definition of the “Canyon Tradition” and the living legacy of which Coach and Mrs. B are an intricate part.

Coach came to then Grand Canyon College in 1951, after graduating from the University of Central Arkansas in 1949. Upon his arrival at GCU, Brazell became the Men’s Basketball Coach and Athletic Director while serving as the Chair of the Department of Health and Physical Education. The unique purple and white colors that have been donned by GCU Athletes since 1951 was a move made by Brazell, who changed them from brown and gold when the school moved to Phoenix from Prescott, Arizona. The brown and gold were too close to the Arizona State University colors and Brazell wanted to set GCU apart in the valley. An old brown and gold letter sweater still resides in the Antelope Gymnasium Trophy Case. The purple was chosen by Brazell because of his lifelong love for the color as well as it being the color he wore at Central Arkansas as a student athlete.

Brazell spent 13 seasons as the GCU Men’s Basketball Coach during which he racked up a 157-134 record. This included



Dr. Dave Brazell as Tournament Director hands out a medalist award to GCU’s Jessica McKay at a GCU Fall Invitational Women’s Golf Tournament.

a perfect 20-0 record in 1958-59 which also served as the program’s first 20-win season and the only undefeated season in school history. In the spring of 1953, Coach began what would become the most storied program at the University.

Brazell is the Patriarch of Canyon Baseball, laying the groundwork for a program that has gained national prominence over the years. The legacy Brazell began has sent 13 of its players into the major leagues and hundreds of its alumni into the professional baseball ranks. As skipper of the baseball program for 28 seasons, he accumulated a 728-385 record and in his final year at the helm, captured the program’s first NAIA National Championship. Brazell was twice named NAIA Coach of the Year (1979, 1980) and in 1987 the on-campus stadium was named “Brazell Stadium” in his honor.

After stepping down as the baseball coach in 1980 he picked up as the Men’s Head Golf Coach, a position he held until 2002. Brazell’s golf teams were quite accomplished, winning the California Collegiate Athletic Association (CCAA) Championship in 2000 and placing 2nd in the NCAA National Tournament. Brazell was named CCAA Coach of the Year twice (1999, 2000). Following the 2002 season, Brazell stepped aside as Head Golf Coach but remains a part of the athletic programs as the men’s and women’s Tournament Golf Director.

Coach Brazell is as humble a man that you can meet and there are numerous

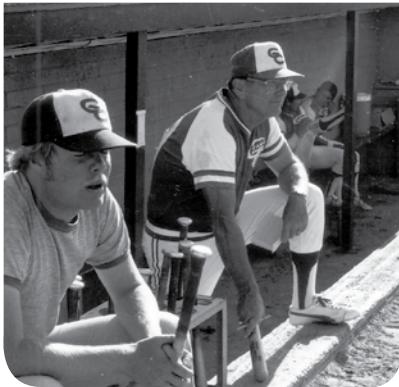
events in his life that he lets pass without any fanfare. He served in the 1st Marine Division in World War II (overseas in Okinawa and China). Brazell has also been inducted into eight Halls of Fame, which include the NAIA, American Baseball Coaches and GCU Halls of Fame. In September of 2005, he was inducted into his 8th Hall of Fame at Central Arkansas, his alma mater. He starred on the football field as an offensive tackle. Brazell stood side by side on that September day with another great former Central Arkansas star and former NBA Champion, Scottie Pippen. Brazell’s #20 that he wore while at Canyon was the first of three retired numbers in the Baseball Program and his jersey currently resides on display in the Antelope Gymnasium Trophy Case.

Brazell also served as a Pac-10, WAC and World Football referee. He was the first Arizona official to be assigned to the Sugar and Rose Bowls, and through the 2004 College Football Season served as an evaluator of Pac-10 Football Officials. Brazell also serves as a Liaison Official for both the Fiesta and Insight.com Bowls and has done so since each of their inception. It was during Brazell’s Pac-10 officiating days that he was doing a game at USC. On one play, Brazell came toward the line of scrimmage like he would do on all passing plays, but this play was different as it ended up being a draw play to the running back. The USC back came barreling up the middle toward a charging Brazell with an immediate collision taking place. As the back got up off the ground



he grabbed Brazell and expressed to him that "that is the hardest I have ever been hit". That young USC back was no other than Heisman Trophy winner and NFL Hall of Famer, Marcus Allen.

Side by side with Brazell all these years has been his wife, "Mrs. B". She was one of the first women to earn a Ph.D. at Arizona State University. Upon earning her doctorate she turned down a position to head the Women's Doctoral Studies Program at ASU. "Mrs. B" chose to



Right: Led GCU to First NAIA National Championship in 1980 and is member of the American Baseball Coaches Hall of Fame.

remain at Grand Canyon with her husband and the students at the university she loved. "Mrs. B" added her thumbprint to the athletic department as well when she began the Women's Tennis program. She has remained active at Canyon by assisting Coach with all GCU Golf Tournaments.

The Brazells are going to celebrate their 60th anniversary on May 1st and still act like newlyweds bouncing around the country on trips. Currently they are trying to visit all 30 Major League Stadiums, and Coach has golfed in all 50 states. The Brazells are active members of First Southern Baptist Church in Phoenix, Arizona with Mrs. B leading a Bible study. Their love and passion for each other and life is admired by all.

Brazell has enriched many lives as a coach and professor, building a strong foundation for future success.

Along with the many All-Americans to suit up for him, Brazell sent two of his former baseball players to the Major Leagues when Frank Snook and Tom Tellmann made it to "The Show" with the San Diego Padres. Former Antelope Athletes who did not make it on the professional level made their mark on the coaching world, using the Brazell methods they learned at GCU. Ben Lindsey played basketball for GCU from 1959-62 under Brazell and took over the Head Coaching Duties from his old coach in 1965. Lindsey proceeded to take GCU to 11 post season appearances in 16 seasons including winning GCU's First Two NAIA National Championships. Lindsey currently is GCU's All-Time Leader in Career Wins in Men's Basketball

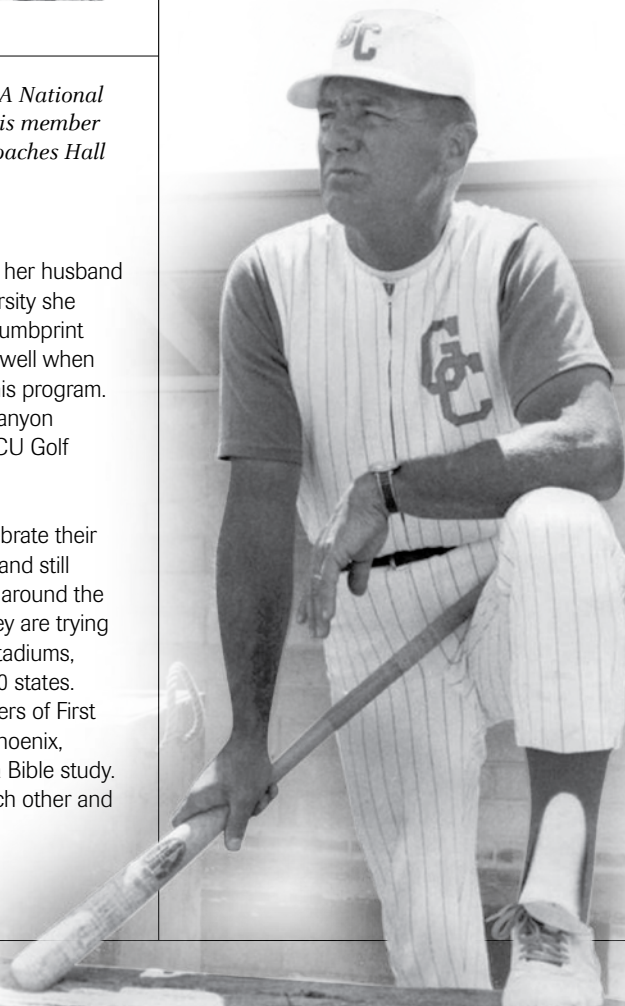


Celebrating their 60th Wedding Anniversary in May 2006, Coach and Mrs. B continue to be involved with GCU Athletics running all GCU Hosted Men's and Women's Golf Tournaments. They will head-up the 2006 Men's NCAA West Regional which will be hosted by GCU.

with 317. Lindsey left Canyon in 1981 to coach at the University of Arizona for two years. Another Brazell prodigy is a big name in College Baseball; Ron Polk was an Antelope from 1964-65 before moving onto his storied College Coaching career. Polk is currently ranked 12th All-Time with 1,275 victories as manager, 1,041 of those wins coming at Mississippi State where he enters his 27th season in 2006. Polk won the SEC Championship in 2005 (his 6th overall) and seven Polk coached clubs have made it to Omaha, NE and the famed College World Series. Not only have successful athletes and coaches developed under the Brazells, but successful individuals who have gone on to leave a lasting and positive influence on society as teachers, doctors, lawyers and entrepreneurs, among many other things.

Those who have walked inside the lines of the hallowed field that bears this man's name, and all others who have worn "Canyon" across their chests as student athletes at GCU have experienced being part of something bigger than themselves. Those athletes have etched their names into the "Canyon Tradition" and will forever be a part of the living legacy that continues up in "The Canyon".

A Tribute By: Vincent Briedis, Director of Sports Information and former Antelope Letterwinner 1998-2001.



1906



2006

1

ASSOCIATION

100

YEARS

2,800

CHAMPIONSHIPS

3,500,000

STUDENT-ATHLETES



Grand Canyon University Proud Member since 1990



NCAA 100 Years Celebration

Grand Canyon University is in the midst of its 16th Athletic Season as a member of the NCAA and beginning with the NCAA Convention in Indianapolis, January 2006, the NCAA will celebrate 100 years of the student-athlete.

- The NCAA was founded in 1906 by President Theodore Roosevelt as a result of numerous injuries and deaths caused by college football's flying wedge. A bronze statue of the flying wedge is featured in the NCAA Hall of Champions, located in Indianapolis, as a tribute to the Association's founding. "The focus of our Centennial celebration will be to commemorate 100 years of intercollegiate athletics, focusing on 100 years of the student-athlete, in a manner that honors the past, highlights the advocacy and reform initiatives of the present, and provides a look into the future", said Myles Brand, President of the NCAA. Below are some NCAA Facts of the past 100 years.
- The purpose of the NCAA is to ensure that college sports are fair, safe, equitable and sportsmanlike and to further integrate intercollegiate athletics within American higher education, making academics central to the experience of student-athletes.
- In December 1905, New York University Chancellor Henry M. MacCracken led a meeting of 13 institutions to initiate changes in football playing rules. The Intercollegiate Athletic Association of the United States (IAAUS) was founded by 62 members on December 28, 1905, in New York City.
- On March 31, 1906, the IAAUS was constituted. The IAAUS became the National Collegiate Athletic Association (NCAA) in 1910.
- The first NCAA national championship, the National Collegiate Track and Field Championships was held in 1921.
- A "Sanity Code" was created to establish guidelines for recruiting and financial aid. Continued abuses involving student-athletes, increasing

numbers of postseason football games, decreased football attendance because of television games and growth in membership and championships demonstrated a need for full-time leadership. Walter Byers was named the NCAA's first executive director in 1951.

- The NCAA national headquarters was established in 1952 in Kansas City, Missouri. Later, the national headquarters moved to Mission, Kansas. In 1999, the NCAA national office moved to its current location in Indianapolis.
- Divisions I, II and III were created in 1973 at the first special Convention.
- In 1978, Division I voted to create I-A and I-AA for the sport of football.
- The NCAA began administering women's championships in 1980.
- There have been four NCAA executive directors and presidents. Walter Byers served as the Association's first executive director for 36 years, retiring in 1987. Richard D. Schultz followed, resigning in 1993. Cedric W. Dempsey served as NCAA president through 2002. Dr. Myles Brand became the first university president to lead the Association, becoming president on January 1, 2003.
- Today, there are approximately 350 full-time employees at the NCAA's national office in Indianapolis.

- Approximately 95 percent of all NCAA revenue is distributed to the membership in the form of scholarships, special events, leadership conferences, programs supporting student-athlete well-being, conference disbursements and through conducting championships and supporting championships travel.
- The NCAA is a voluntary, membership-led Association made up of more than 1,200 colleges and universities, conferences and other groups.
- There are 125 committees within the NCAA governance structure working to create guidelines to serve the student-athlete.
- There are currently more than 360,000 NCAA student-athletes competing in three divisions (Divisions I, II and III) in 23 sports.
- Approximately 49,000 student-athletes compete in 88 NCAA championships each year. Three of these championships are co-ed championships (rifle, fencing and skiing).
- The 2005-06 season celebrates the 25th anniversary of women's championships.

Below: This bronze statue of the flying wedge is featured in the NCAA Hall of Champions, located in Indianapolis, as a tribute to the Association's founding.



 **Athletic Staff:**



Brent Richardson
GCU
Chief Executive Officer



B. Keith Baker
Athletic Director
602.589.2816



Ruth Ann Gardner
Asst. A.D. / SWA
602.589.2815



Claude Pensis
Faculty Athletic Representative
602.589.2870



Kris Naber
Assistant A.D.
602.589.2791



Robin Meelhuysen
Compliance Coordinator
602.589.2803



Geordie Hackett
Head Athletic Trainer, A.T.C.
602.589.2804



Vincent Briedis
Director of Sports Information
602.589.2795



Shaun Erickson
Sports Information Staff
Photographer



About GCU

GRAND CANYON UNIVERSITY



About GCU:

Founded in 1949, Grand Canyon University is a premier, private, accredited, Christian university located in Phoenix, Arizona. GCU supports traditional undergraduate students as well as working professionals through our online and campus-based Bachelor's and Master's degree programs. Students can pursue their degree in one of our four Colleges: Ken Blanchard College of Business, College of Education, College of Nursing or the College of Liberal Arts and Sciences. Each Grand Canyon University's college adheres to rigid standards of excellence in order to create an optimal learning environment comprised of small classes, accessible faculty, challenging curriculum and hands-on learning.

Whether you are a Phoenix Campus student or an Online Campus student, you will find a program that fits your interests and challenges you intellectually.

Grand Canyon University Online programs offer the same high quality education that the Phoenix Campus programs provide. Our online classes offer a format that is accessible to students throughout the nation and more convenient for working adults. That means that you can take courses any time, any place—whether you are a full time employee, stay-at-home parent, or are commissioned overseas in the military. Each Grand Canyon University Online course is developed by teams consisting of faculty, subject-matter experts, instructional designers and editors. So whether you earn your degree Online or on Campus, your degree will be a valuable and well recognized asset in the workplace and highly regarded among the higher education community.

Faculty

Grand Canyon University is recognized for academic excellence, in part, because our professors never stop learning.

Our faculty are primarily doctoral educated or hold a minimum of a Master's degree in their field of study. Our professors are passionate about their areas of expertise and are dedicated to sharing their knowledge to create lifelong learners. Many faculty members hold positions of leadership in professional organizations while some are active in research and publication and others are involved in their communities. That means that each professor has unique world experiences and is continually learning and developing personally and professionally, providing you with an always evolving and improving educational environment.



Grand Canyon University provided me with an outstanding personalized education that is, in a word, priceless. The friendships and relationships formed in the process continue to be lifelong treasures. Next to my relationship with God and meeting and marrying my wife, GCU is the best thing that ever happened to me."

Eric D. Kendle, MD
Surgeon

Accreditation

Grand Canyon University is accredited by The Higher Learning Commission 30 N. LaSalle St. Suite 2400 Chicago, IL 60602-2504 (member of the North Central Association) and meets all requirements and standards established for degree-granting institutions.

The nursing program at GCU is approved by the Arizona State Board of Nursing and is additionally accredited by the Commission on Collegiate Nursing Education, One DuPont Circle N.W., Suite 530 Washington, D.C., 20036-1120. Our graduates maintain an outstanding placement rate in the medical field.

The Bachelor of Business Administration and Master of Business Administration degrees are accredited by The Association of Collegiate Business Schools and Programs 7007 College Boulevard, Suite 420 Overland Park, KS 66211, and is **one of only three colleges in Arizona that hold that accreditation.**



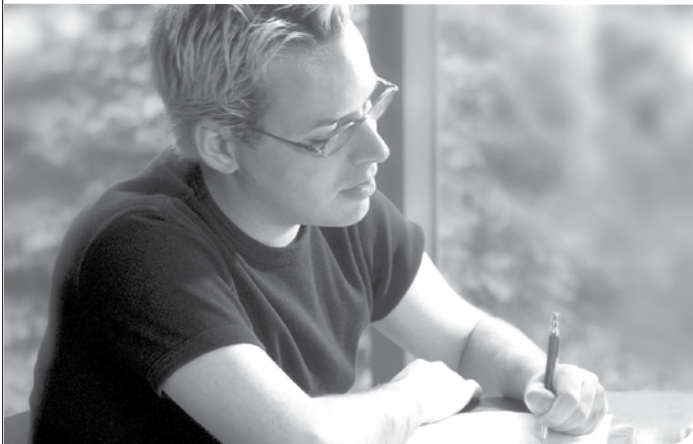
Steps to Enroll

1. **Call an Enrollment Advisor at 800-800-9776** to discuss your path to graduation.
2. **Your Enrollment Counselor will show you all the benefits of attending Grand Canyon University**, including how to apply for financial aid and request school transcripts.
3. If you're ready to fill out an application, **please call 800-800-9776 and ask to speak to an enrollment counselor** or visit us today at www.gcu.net/campus

Call Today!
1-800-800-9776

"At GCU you have the opportunity to become who you want to be. My most memorable experiences have been through being involved with Student Government. It has placed me in real world situations that the classroom didn't offer."

Nick Knudson
Business Major, Student Government



Four Pillars of Success

There are four areas of collegiate development, referred to as our "Four Pillars," that we believe are the keys to a meaningful and carefully balanced education--one that will make a significant difference in your life.

1. **Academic Advancement**
2. **Extra-Curricular Excellence**
3. **Christian Camaraderie**
4. **Wellness & Well-being**

Don't miss a day of your future!

Join the caring, growing student body of Grand Canyon University!

Program List:

COLLEGE OF LIBERAL ARTS AND SCIENCES

Bachelor of Arts in Applied Music
 Bachelor of Arts in Art Education
 Bachelor of Arts in Biochemistry
 Bachelor of Arts in Christian Studies with an Emphasis in Applied Ministry: Pastoral*
 Bachelor of Arts in Christian Studies with an Emphasis in Applied Ministry: Worship*
 Bachelor of Arts in Christian Studies with an Emphasis in Applied Ministry: Youth*
 Bachelor of Arts in Communications
 Bachelor of Arts in English Literature
 Bachelor of Arts in English Teaching
 Bachelor of Arts in Graphic Design
 Bachelor of Arts in History
 Bachelor of Arts in International Studies
 Bachelor of Arts in Philosophy
 Bachelor of Arts in Political Science
 Bachelor of Arts in Spanish
 Bachelor of Arts in Speech/Theatre
 Bachelor of Arts in Studio Art
 Bachelor of Arts in Theatre/Drama
 Bachelor of Music in Church Music
 Bachelor of Music in Piano Performance
 Bachelor of Music in Vocal Performance
 Bachelor of Science in Allied Health
 Bachelor of Science in Athletic Training
 Bachelor of Science in Biology
 Bachelor of Science in Biology for Secondary Teaching
 Bachelor of Science in Chemistry
 Bachelor of Science in Chemistry for Secondary Teaching
 Bachelor of Science in Corporate Fitness and Wellness
 Bachelor of Science in Environmental Biology
 Bachelor of Science in Human Biology
 Bachelor of Science in Justice Studies
 Bachelor of Science in Mathematics
 Bachelor of Science in Mathematics (Engineering)
 Bachelor of Science in Mathematics (Secondary Teaching)
 Bachelor of Science in Music Education
 Bachelor of Science in Organizational Sociology
 Bachelor of Science in Physical Education
 Bachelor of Science in Physical Science
 Bachelor of Science in Physics for Secondary Teaching

Bachelor of Science in Psychology*
 Bachelor of Science in Public Safety Administration*
 Bachelor of Science in Recreation
 Bachelor of Science in Science for Elementary Teaching
 Bachelor of Science in Sociology
 Bachelor of Science in Speech Teaching
 Minor In Family Studies*

COLLEGE OF EDUCATION

Bachelor of Science in Elementary Education
 Bachelor of Science in Secondary Education
 Bachelor of Science in Special Education
 Master of Arts in Teaching*
 Master of Education in Education Administration*
 Master of Education in Curriculum and Instruction: Technology*
 Master of Education in Curriculum and Instruction: Reading*
 Master of Education in Special Education Dependent on State Requirements*
 Master of Education in Special Education with Institutional Recommendation*
 Master of Education in Special Education for Certified Special Educators*
 Masters of Education in Elementary Education*
 Master of Education in Secondary Education*

COLLEGE OF NURSING

Bachelor of Science in Nursing
 RN to Bachelor of Science in Nursing (RN/B)*

Masters of Science in Nursing
 - Clinical Nurse Specialist
 - Nursing Education
 - Clinical Nurse Specialist/Nursing Education
 - Nursing Leadership in Health Care Systems
 - Family Nurse Practitioner

KEN BLANCHARD COLLEGE OF BUSINESS

Bachelor of Science in Accounting*
 Bachelor of Science in Applied Management*
 Bachelor of Science in Business Administration*
 Bachelor of Science in Marketing*
 Master of Business Administration
 Master of Business Administration: Accounting Emphasis*
 Master of Business Administration: Finance Emphasis*
 Master of Business Administration: Health Systems Management Emphasis*
 Master of Business Administration: Marketing Emphasis*
 Master of Business Administration: Six Sigma Emphasis*
 Master of Business Administration: E-Business
 Master of Business Administration: Leadership
 Master of Science in Executive Fire Service Leadership*
 Master of Science in Leadership*

* Program also offered online.



I feel as though my professors are interested in more than just helping me get my degree; they are here to mentor and share in the lives of their students."

Christopher Keck
 Psychology Major, SALT Ministry,
 Adopt-a-Block, Young Life Leader

DEPARTMENT OF INTERCOLLEGIATE ATHLETICS MISSION

The Grand Canyon University Department of Intercollegiate Athletics is dedicated to providing quality programs and athletic experiences for men and women with interest and ability that is consistent with the stated mission and values of the university.

We are committed to the development of the whole person. The department strives to educate and involve students and the university community in the promotion of personal growth. This department strives to prepare men and women to be student-athletes distinguished by integrity, effort to succeed, and Christian conduct.

We expect our student-athletes to pursue excellence on the courts and playing fields, in the classroom, and in our community. Students who choose to participate in our athletic programs are challenged to lead lives committed to health, discipline, perseverance, and stewardship. We expect our student-athletes, coaches and staff to emulate Christ in all aspects of their lives including their academic and athletic endeavors.





2005-06 Men's Basketball Schedule

NOVEMBER				
TUESDAY	15	COLORADO-COLORADO SPRINGS	7:00 PM	ANTELOPE GYM
Friday	18	@ Central Washington Tournament	TBA	Ellensburg , WA
Saturday	19	@ Central Washington Tournament	TBA	Ellensburg , WA
FRIDAY	25	UC SAN DIEGO	5:00 PM	ANTELOPE GYM
SATURDAY	26	CAL STATE MONTEREY BAY	7:00 PM	ANTELOPE GYM
Wednesday	30	@ Colorado-Colorado Springs	7:00 PM	Colorado Springs , CO
DECEMBER				
Friday	2	@ Ft. Lewis Tournament	TBA	Durango , CO
Saturday	3	@ Ft. Lewis Tournament	TBA	Durango , CO
Thursday	8	@Western New Mexico	7:30 PM	Silver City, NM
SUNDAY	11	HAWAII PACIFIC	4:00 PM	ANTELOPE GYM
TUESDAY	13	CS BAKERSFIELD	7:00 PM	ANTELOPE GYM
FRIDAY	16	VANGUARD UNIVERSITY	7:00 PM	ANTELOPE GYM
THURSDAY	29	^ CS SAN BERNARDINO	4:00 PM	ANTELOPE GYM
JANUARY				
Tuesday	3	@ UC San Diego	4:00 PM	La Jolla , CA
Sunday	8	@ Notre Dame de Namur	7:30 PM	Belmont , CA
Tuesday	10	@ San Francisco State	7:00 PM	San Francisco , CA
MONDAY	16	BYU-HAWAII	7:00 PM	ANTELOPE GYM
SATURDAY	21	SOUTHWESTERN	8:00 PM	ANTELOPE GYM
Tuesday	24	@ CS Bakersfield	7:30 PM	Bakersfield , CA
SATURDAY	28	CHAMINADE UNIVERSITY	7:00 PM	ANTELOPE GYM
FEBRUARY				
THURSDAY	2	WESTERN NEW MEXICO	7:00 PM	ANTELOPE GYM
Monday	6	@ Southwestern	7:00 PM	Phoenix, AZ
Thursday	16	@ BYU-Hawaii	7:30 PM	Honolulu, HI
Saturday	18	@ Chaminade University	7:30 PM	Honolulu, HI
Monday	20	@ Hawaii Pacific	4:00 PM	Honolulu, HI
SATURDAY	25	NOTRE DAME DE NAMUR	7:00 PM	ANTELOPE GYM
TUESDAY	28	SAN FRANCISCO STATE	7:00 PM	ANTELOPE GYM

- All dates, times and events subject to change - All times shown are local time-

Home Games are Played at Antelope Gymnasium on the Campus of Grand Canyon University



3300 W. Camelback Rd.
Phoenix, Arizona
85017

1-800-800-9776
www.gcu.net