



**STUDENT-ATHLETE
HANDBOOK 2010-2011**

UNIVERSITY OF KENTUCKY



STUDENT-ATHLETE HANDBOOK
ACKNOWLEDGEMENT OF RECEIPT

The University of Kentucky Student-Athlete Handbook contains information regarding the rights and responsibilities of student-athletes.

I have received a copy of the University of Kentucky Student-Athlete Handbook and acknowledge that I am responsible to read and understand all the information pertaining to my participation as a student-athlete at the University of Kentucky.

I further acknowledge that if I do not understand any part of the information enclosed in the handbook, it is my responsibility to meet with Bob Bradley, Associate Athletics Director for Student Services, to clarify that information.

Student-Athlete Signature

Date

Please Print Name _____

Sport _____



Athletics Director

Athletics

Joe Craft Center

Lexington, KY 40506-0019

(859) 257-8000

Fax: (859) 257-6302

Dear Wildcat,

It is my pleasure to greet our student-athletes as they return to campus and welcome our new freshmen to the University of Kentucky.

We are excited that you are a part of our Wildcat family and look forward to all of the things that bring you success in the classroom and in your competitive efforts. Our department is committed to providing you with a first-class experience and this handbook is a valuable resource you can turn to for information in that endeavor.

One of the goals at the University of Kentucky is to have a Top 20 academic institution. One of our goals in this department is to achieve at a high level academically and win championships within our leagues and the NCAA. It is our goal to surpass the 3.0 GPA mark for all student-athletes each semester. It is our goal for each team to participate and achieve at a championship level at the NCAA's to allow us to have a Top 25 department in overall competitiveness. None of these institutional or departmental goals are attainable without everyone's complete commitment.

There is a lot of positive activity going on in Lexington, on campus, and in our department. We are glad you are a part of it and ready to make a difference. I look forward to watching you excel at the University of Kentucky.

It is a great time to be a Wildcat!!!

Go Cats,

Mitch Barnhart

Mitch Barnhart

Director of Athletics





Athletics Director
Athletics
Joe Craft Center
Lexington, KY 40506-0019
(859) 257-8000
Fax: (859) 257-6302

UNIVERSITY OF KENTUCKY ATHLETICS DEPARTMENT

"Five Steps to Success"

1. **Be First Class in All We Do!**

Treat People with Respect
Wear the Kentucky Colors with Pride
Bring Honor to Your Family, Teammates, and School

2. **Have Integrity!**

Compete Clean
Follow the Rules

3. **Have a Great Student-Athlete Experience!**

Get Your Degree
Attend Your Classes Regularly and on Time
Respect the Faculty and Staff of the University
Have Academic Honesty

4. **Enjoy the Privileges of a First Class Experience!**

You Will Represent Kentucky in Many Great Places
You Will Work with World-Class Faculty and Coaches
You Will Get a Great Education

5. **Compete for Championships!**

Build Memories and Relationships For Your Lifetime
Represent Yourself, Your Teammates, and Kentucky with Great Sportsmanship

Table of Contents

Academics and CATS	
Center for Academic and Tutorial Services	7
Overview	8
Mission Statement	9
CATS Services	10
Advising	10
Tutoring	10
Mentoring	10
Hours of Operation	10
Personal Development	11
Outreach	11
Life Skills Program	11
Career Development	11
How you can help yourself	12
How to Get Involved	13
Cats Cultivating Character	13
UK Children's Hospital	13
Hope Center	14
Ronald McDonald House	14
Mentoring	14
Salvation Army	14
School Speakers	14
S.A.A.C.	16
University Academic Policies	18
Classification and Graduation	19
Petition to take course at another school	19
Scholastic Probation	20
Removal from Probation	20
Academic Suspension	20
General Rules	21
Reinstatement	21
Readmission/Bankruptcy	22
Academic Ombud	23
Helpful Suggestions	24
Add/Drop	24
Procedures for Dropping a class	24
Withdrawal from UK	25



Rules and Regulations that Affect You	26
Class Attendance Policy	27
Tutoring Policy	31
Weapons Policy	33
Hazing	34
Compliance Information	35
Amateurism	35
Agents	36
Employment	36
Promotional Activities	36
Recruiting	37
Student Host	37
Eligibility	39
Continuing Eligibility	39
Post Season Competition	40
Transferring	40
Ineligibility	41
APP	41
Financial Aid	42
Limit	
Countable Aid	42
Non-Countable Aid	42
Renewal, Reduction or Non-Renewal of Aid	43
Financial Aid Procedures	45
Awards and Benefits	46
Athletic Awards	46
Complimentary Admissions	46
Benefits, Gifts, and Services	47
Permissible and non-	

permissible	47	Commonwealth Stadium	68
		Hilary J. Boone Tennis Center	68
Medical Information	49	Lancaster Aquatic Center	68
The Athletic Medicine Program	50	Memorial Coliseum	69
Student-Athlete Rights	51	Nutter Field House	69
University Health Service	52	Nutter Training Facility	69
Medical Insurance	52	Rupp Arena	69
NCAA Regulations	53	Shively Track	69
Preseason Physicals	53	UK Soccer Complex	70
Pre-Existing Injuries or Conditions	53	UK Softball Stadium	70
Close-Out Screening	54	UK Basketball Practice Facility	71
5th Year Non-Competing Student-Athletes	54	Important Things to Know	72
Reporting Injuries or Illnesses	54	Creating your New E-mail Account	73
Emergencies	55	Working with the Media	75
Injuries on the Road	55	Wildcard Student ID	76
Physician Appointments	55	Your Plus Account	77
Medical Excuses	56	Student-Athlete Tickets	77
Prescription Medication	56	Residence Life	77
Policies Regarding Specific Medical Conditions	57	Student Parking and Campus Bus Service	81
Sickle Cell Trait	57	Parking	81
Concussions	57	Renewing Permits	81
Contact Lens	57	Parking for Students with Disabilities	81
Dental Care	58	Guest Parking	81
Pregnancy Policy	58	Short-term Parking	82
Counseling	59	Avoiding Citations	82
Nutrition Counseling	59	Campus Bus Service	82
Eating Disorders	59	Lexington Bus Service	83
Sexual Assault Protocol	62	Who Can Help Me	85
Supplements	63	Campus Offices	86
Alcohol/Drug Education Screening Program	63	Colleges	86
Tobacco	64	Frequently Called Numbers	87
Prevention of Infectious Disease	64	Head Coach Directory	88
Athletic Training Rules	65	UKAA	89
		Athletic Department Offices	91
Facilities	67	Guide to University Offices	92
CATS	68	Campus Map	98
Cliff Hagan Stadium	68		

The University of Kentucky ...Your University



ACADEMICS and CATS

Each student-athlete must strive to achieve academic goals that provide the best possible post college quality of life. The commitment of the University of Kentucky Athletics Department is to support the academic progress of the student-athlete toward intellectual development and graduation.

CENTER FOR ACADEMIC AND TUTORIAL SERVICES

Center for Academic and Tutorial Services Mission Statement

The mission of the CATS' program is to create an environment where all student-athletes have the opportunity to maximize their academic, personal and social growth and improve their post-college quality of life. You will have a CATS advisor and a campus advisor to make sure you are on target for your degree.

Overview

The Center for Academic and Tutorial Services (CATS) is a multi-purpose academic facility. The mission of the CATS support program is consistent with the overall mission of the athletics department and the University of Kentucky. The Center for Academic and Tutorial Services' staff strives to ensure that each student-athlete is at the heart of the program.

Every student-athlete has needs that are fulfilled by personal, athletic and academic success. The ultimate goal of the CATS staff is to ensure that the athletic department provides each student-athlete with the opportunity to mature and grow personally and academically while pursuing athletic excellence.

The Center for Academic and Tutorial Services has been recognized as a national model of academic advising for student-athletes. The staff is committed to continued prominence in the field. Many members of the CATS staff have been elected to leadership positions within the National Association of Academic Advisors for Athletics (N4A) including the President of the N4A, Secretary, Regional Representative, Treasurer and Committee Chairs. Honors received by CATS staff include the National Outstanding Advisor Award, the Professional Promise Award (2), and the Distinguished Service Award. The University of Kentucky Academic-Athletic support program will further maintain its prominence by serving as the representative of the student-athlete's educational opportunity.

Every facet of our program is directed toward fulfilling the promises that coaches and the athletics department personnel make in the recruiting process and ensuring that each student-athlete has every opportunity to succeed.

Our mission as it relates to our Student-Athletes

The University of Kentucky Athletics Department is committed to providing the student-athletes with high quality services. The staff of the Center for Academic and Tutorial Services will make every effort to create a wholesome learning environment and will be fair, courteous and professional. The staff will be sensitive to the student-athlete's special needs.

Our mission as it relates to our Coaches

Unlike coaches in professional sports, college coaches are responsible not only for the athletic success of their student-athletes but also the personal and academic development of the individuals they recruit. The CATS staff can do very little to affect a student-athlete's educational, personal and social development unless that staff is empowered by the coaches. The CATS staff will always be aware of the importance of winning to the coaches but this must not be at the expense of the student-athlete's academic and personal success or emotional well-being.

College coaches are in a unique position and under unique pressures. If coaches express interest in the academic, educational and personal growth of the prospect during the recruiting process, they have responsibility to ensure that they provide support and guidance to the student-athletes in each of these areas. Coaches must be aware of the University's academic profile and recruit students who they believe can succeed academically. It is the head coach's responsibility to ensure that the student-athletes graduate and have the opportunity for personal and social growth.

Our mission as it relates to our Staff

We are committed to the recruitment and development of the best individuals in our profession. We provide our staff the opportunity to grow professionally as we have a vested interest in the individuals who ensure the success of the student-athlete support program. We maintain an open door policy at all levels, encouraging the flow of communication and exchange of ideas. We recognize the importance of each individual in the completion of our mission.

CATS Services

Advising

Eight full-time advisors and eight part-time academic graduate assistants work to provide wholesome and productive advising services. Academic advisors work directly with assigned teams ensuring that each student-athlete's schedule meets the requirements for graduation and that athletic conflicts are avoided where possible. Academic graduate assistants communicate with professors regarding the academic progress of student-athletes, check classes and serve as peer counselors for the student-athletes.



Tutoring

A full-time tutor coordinator manages this position. Tutors are available for any subject. We draw our tutors from the University and the community. Our tutor corps comes from professors, graduate students and undergraduates who are well qualified, as well as teachers and professionals from the community.

Mentoring

Many students, not just student-athletes, come to college with limited organizational skills. As a result, many first year student-athletes are assigned a mentor. The mentor monitors the student-athlete's progress throughout the week, helping the student-athlete stay on task and learn the necessary organizational skills to succeed in college. Mentors come from our corps of veteran adult tutors including retired school teachers and full-time staff in CATS.

Hours of Operation

Monday-Thursday: 8:00 a.m.-10:00 p.m.

Friday: 8:00 a.m.- 5:00 p.m.

Sunday: 2:00 p.m.-10:00 p.m.

CATS Staff

- 8 Full-time professional advising Staff
- Life Skills Coordinator
- Tutoring and Outreach Coordinator
- 8 graduate assistants (peer advisors)
- Tutors and Mentors

Personal Development Program

The University of Kentucky Athletics Department has made a commitment to the personal and life skills development of our student-athletes. The purpose of this program is to inform student-athletes at the University of Kentucky on issues concerning their social development, personal health, fundamental values, emotional health, peer education and counseling and fiscal responsibility.

Sample Personal Development Seminars:

- Alcohol Responsibility (Required each year)
- Implications of Sports Betting
- Nutrition and Eating Disorders
- Diversity Awareness
- Stress Management
- Time Management
- Character and You
- Relationship Violence
- Sexual Responsibility
- Money Management and Credit Cards

Community Outreach

It is a privilege to be a student-athlete at a major university. Among the benefits that each student-athlete accrues are significant learning experiences that teach important life lessons. None is more important than learning to give back to the individuals and community that have supported and cheered the student-athlete.

LIFE SKILLS PROGRAM

Career Development

The programs of the Career and Life Skills Resource center assist the student-athletes as they begin college and at each step as they move toward their post-college careers. Early in their college careers, student-athletes can get help with determining a college major and direction toward a career. During their years at the University, the Life Skills Coordinator will assist them with finding shadowing experiences and internships that will provide them with on the job experience. Our Life

Skills Coordinator assists students in writing cover letters and preparing a resume. Further, the Life Skills Coordinator spends Academics and CATS



one day a week in the Career Center on campus where hundreds of employers come each year to interview potential candidates. The Life Skills Coordinator can provide valuable information as to the process and the Career and Life Skills Resource Center has materials to help the student prepare for entrance examinations.

The Career Development Life Skills program attempts to provide the following services to our student-athletes:

- Career selection assistance
- Shadowing experiences
- Internship experiences
- Resources on various Life Skills topics
- Preparation materials for graduate and professional schools
- Assistance in the post-college “job search”
 - Registering at the University Career Center
 - Resume Preparation
 - Cover letter writing assistance
 - Career and employer panels
 - Interviews with potential employers
 - Career Fairs on campus

What You Can Do as a Student to Help Yourself

We believe that the student-athlete can increase their opportunities for a meaningful career by following the time table described below.

Freshman Year

Identify skills, interests, values and abilities pertinent to career selection, research, and choose suitable major

- Attend UK 101 presentations concerning career development
- Complete career guidance and career planning software
- Make appointments for shadow opportunities with professionals within the community
- Make appointments with college advisors to learn more about the field of interest, college and department
- Discuss options and possibilities related to career objectives with a career counselor

Sophomore Year

Create Academic and Related Career Plan

- Research necessary academic requirements for graduation
- Make appointments for shadowing opportunities with professionals within the community
- Discuss options and possibilities for internships
- Set up summer internships

Junior Year

Focus on Career Selection and Job Search

- Attend career oriented workshops and career fairs

- Identify internships for spring and summer interviews with prospective employers and be a part of the large database available to employers
- Research graduate or professional school options
- Research potential employers
- Arrange for interviews for internships
- Register with the Stuckert Career Center for access to Wildcat Career Link
- Create resume and post to Career Athletes website and Wildcat Career Link

Senior Year

Explore Career Opportunities before graduation

- Update resume for job interviews
- Participate in one-on-one sessions concerning interviewing techniques
- Register with the Stuckert Career Center to be eligible for on campus interviews with prospective employers and be a part of the large database available to employers
- Meet employers at campus and local fairs

HOW YOU CAN GET INVOLVED

Community and School Outreach

This can help you get a job! We have had many of our student-athletes who have interviewed for positions with companies and the employer has been very impressed that this person volunteered in the community. Companies want employees who are involved in the community they live in. It is a great public relations tool for the company. Get involved!

Cats Cultivating Character

This program is designed to teach third graders the importance of good character. Each month, a group of student-athletes visit a local elementary school to present one of the aspects of character.

University of Kentucky Children's Hospital

Once a month student-athletes volunteer their time to visit with patients at the hospital. They play games, read, and hand out presents.

Hope Center

This is a homeless shelter for men where student-athletes volunteer at least once a month and help serve food.

Ronald McDonald House

Student-athletes volunteer to bake food for the families staying here who have a child in the hospital. They also help clean up the grounds and take time clean the inside as well.

Mentoring

Student-athletes are continuously working with many elementary and middle school students on a weekly basis in a one-on-one situation. They encourage the students to manage their time better, guide them in better decision-making skills and promote a healthier lifestyle.



Salvation Army

During the holiday season, student-athletes volunteer their time ringing bells for the “Red Kettle Campaign” to help raise money. They also purchase small gifts to stuff in Christmas stockings that will be distributed to needy families in the area for Christmas.

School Speakers

Student-athletes visit a number of local schools speaking to children on a variety of topics, including the importance of an education, good decision-making skills and setting goals.

Quotes from teachers and students about our Community & School Outreach Program:

“I like my buddy a lot. She helps me with my homework.”
- Elementary School Student

“Please do not ever stop this wonderful program. It is one of the most beneficial that our students have ever experienced.” - School Teacher

“On Thursday, March 5, 1998, a UK football player presented his thoughts and ideas with regard to leadership to a group of approximately 50 fourth-and fifth-grade students. He presented himself very well and quickly established rapport with our students. We found him to be sincere

and genuine. We are proud to have him as a representative to our Commonwealth.”

- Rick Mattox, Principal of Mapleton
Elementary (Mount Sterling, KY)

“Please thank the athletes that talked to our students on their visit to UK. The field trip was a wonderful opportunity for the children to experience academic and athletic success at UK.”

- Cathy Stuphen, Family Resource Coordinator

“The program is so beneficial to our school, community, and most of all to our students who don’t have much hope because of the lack of role models.”

- School teacher

“We as teachers often say the same things the college students do, but they listen to them many times when they don’t hear us. I look forward to this great program each semester.”

- School Teacher

“If our students want to do something important in life, they have to study as much as play. UK has one of the highest graduation rates and we emphasize that.”

- School teacher

“We talk about a lot of things. He (UK student-athlete) helps me to understand why I should get a good education.”

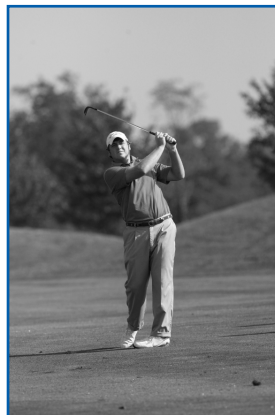
- Elementary School Student

For any student-athlete interested in participating in “Cats That Care” or any other outreach program, please contact Dustin Lewis at 257-2762.

Student Athlete Advisory Committee (S.A.A.C.)

Mission Statement

The mission of the University of Kentucky Student-Athlete Advisory Committee (S.A.A.C.) shall be consistent with the overall mission of the University of Kentucky Athletic Department. The mission of the Student-Athlete Advisory Committee is to assist in the creation of an environment where all student-athletes can maximize their academic, personal and social growth and improve their post-college quality of life. The student-athlete must be at the heart of the program. It is recognized that every student-athlete has goals that are fulfilled by athletic, academic and personal success. Thus, there must be a balance that ensures the student-athlete is provided with the opportunity to attain these goals. More importantly, as a committee we will invest our time, finances and talents in something that lasts forever - "people," in order to build a positive foundation in their lives. In turn, those we invest in will continue to impact the lives of the people around them, because people last forever.



The University of Kentucky Student-Athlete Advisory Committee shall fulfill this mission by:

- A. Improving communication between the UKAA and the student-athletes.
- B. Acting as a liaison between the athletics administration and student-athletes, S.A.A.C. will provide student-athletes with a voice in the UKAA decision making process.
- C. Improving the organization through the involvement among student-athletes in community and campus issues, as well as to alert student-athletes to issues concerning them.
- D. Serving as liaison to the Southeastern Conference (SEC) and the National Collegiate Athletic Association (NCAA).

How to Become a SAAC Representative

Student-athletes in academic "good standing" may volunteer to serve as a team representative. If more than one student-athlete volunteers, a ballot will be distributed to the team and a vote will take place. A representative must have eligibility remaining for the duration of their sought after term. Representatives will serve a two-year term and may be elected to a second

(two-year) term. Attendance at all meetings is mandatory. Three unexcused absences by a representative will require the S.A.A.C. advisor to request action.

2010-2011 SAAC Representatives:

Kayla Sergesketter (President)	Women's Swimming
J.D. Horton (Vice President)	Men's Track
Chelsea Peterson (Secretary)	Women's Swimming
Laura McGehee (Social Coordinator)	Women's Golf
Brad Cox (Treasurer)	Men's Tennis
Ashleigh Gustafson (Web-Site Coordinator)	Men's Soccer
Darius Miller	Men's Basketball
Carly Morrow	Women's Basketball
Anthony Mosley	Football
Billy Joe Murphy	Football
Seth Blann	Men's Golf
Whitney Rose	Gymnastics
Sarah Broeker	Rifle
Josh Albers	Men's Soccer
Kelsey Hunyadi	Women's Soccer
Maclin Simpson	Men's Swimming
Lauren Meier	Women's Tennis
Suzanne Holt	Women's Track
Ann Armes	Volleyball
TBA	Baseball

UNIVERSITY ACADEMIC POLICIES

The operations of the University's educational program are based upon certain academic requirements and procedures with which you should familiarize yourself. Additional information is available in the University of Kentucky's Undergraduate Bulletin, the Schedule of Classes and other publications of the University.

Confidentiality of Student Records

In accordance with the Family Education Rights and Privacy Act of 1974, University of Kentucky students have the right to review, inspect, and challenge the accuracy of information kept in a cumulative file by the institution unless the student waives this right in writing. Records cannot be released in other than emergency situations without the written consent of the student, except in the following situations:

- To other school officials, including faculty within the educational institution or local educational agency who have legitimate educational interests
- To officials of other schools or school systems in which the student intends to enroll, upon condition that the student be notified of the transfer, receive a copy of the record if desired, and have an opportunity for a hearing to challenge the content of the record
- To authorized representatives of (1) the Comptroller General of the United States, (2) the Secretary of Education of the United States, (3) an administrative head of an education agency or (4) state educational authorities
- In connection with a student's allocation for, and receipt of, financial aid, and
- Where the information is classified as "Directory Information"



The following categories of information have been designated by the University as directory information: name, address, telephone listing, date and place of birth, major field of study, participation in officially recognized activities and sports, weight and height of members of athletic teams, dates

of attendance, degrees and awards received and the most recent previous educational institution attended by the student.

Students who do not wish such information released without their consent should notify the Registrar's Office in writing. In addition, you will be asked to sign a written consent which allows authorized representatives of the University of Kentucky Athletics Association and your parents access to all documents and information pertaining to your University and NCAA eligibility.

Academic Eligibility, Grade Classification and Graduation

The NCAA has many rules regarding eligibility for student-athletes. Please refer to the University and Athletics Department Rules and Regulations section on page 27 for regulations specific to your status at the University such as: percent of degree, GPA, hours per year and hours per semester, etc. Also, you must carry twelve (12) semester credit hours each term in order to be classified as full-time. Dropping below the full-time load (12 hours) will result in the student-athlete being immediately ineligible for practice and competition. You must realize that most degree programs require the completion of at least one hundred twenty (120) hours. This is thirty (30) hours each year over a four-year period or fifteen (15) hours per semester.

Petition to take Courses at Another School

You may obtain a petition to take courses at another school from the dean of your college. By completing this form prior to enrolling at another college or university, and by having your courses approved by your academic dean, you are assured of your credits being transferred when you return to the University of Kentucky. In the past, this form has been used only by students attending summer school at some institution other than the University of Kentucky. However, the form has been expanded to include the fall and spring semesters as well as correspondence and/or extension courses.

Scholastic Probation, Academic Suspension and Reinstatement: General Regulations for Undergraduate Students

The academic probation and suspension standards that are used to determine a student's academic standing University-wide are based on grade-point average.

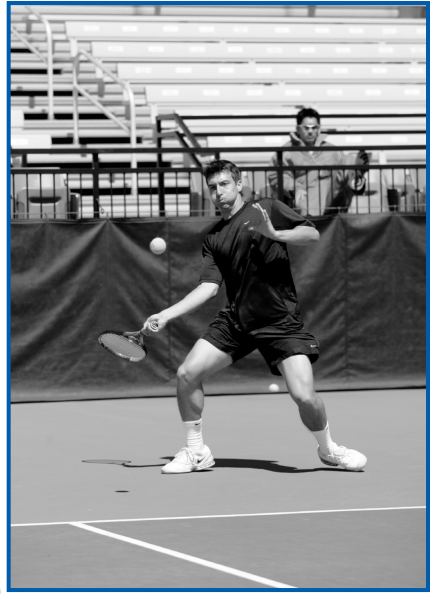
Individual colleges may establish policies regarding academic probation and suspension with regard to a student's academic standing within the college in addition to the University-wide policies given here. If a college establishes such a policy, the policy must be approved by the University Senate and made available in writing to the students.

Scholastic Probation

Students are placed on scholastic probation if:

Their cumulative grade-point average (GPA) falls below 2.0. Students on probation for this reason who achieve a cumulative 2.0 GPA, shall be removed from probation;
or

They have two consecutive UK academic terms with term GPAs below 2.0 regardless of their cumulative GPA. Students who achieve a 2.0 or better in the next term and have a cumulative GPA of 2.0 or better will be removed from probation.



Removal from Probation

Except as provided for by specific college probation policy, an undergraduate student may be removed from probation by the dean of the college when the student on scholastic probation has earned 90 semester hours (senior standing), and at the end of a semester or session has a cumulative grade-point standing of 2.0.

Academic Suspension

Students are subject to suspension if:

They have three consecutive UK terms in which their cumulative GPA remains below 2.0;
They fail to earn a 2.0 term GPA for any term while on probation;
or

Their GPA is below 0.6 after their first term, if the semester's GPA is based on at least 9 hours of grades, A, B, C, D, or E.

In cases when a student is eligible for suspension, the dean of the student's college may continue a student on academic probation if the individual case so justifies.

General Rules Pertaining to Students Under Academic Suspension

A student who is under academic suspension from the University may not enroll in any courses (including courses taken through the Office of Independent Study) offered by the University of Kentucky, nor take any special examination for University of Kentucky credit.

Students already enrolled in correspondence course(s) will be allowed to complete the course work upon notification of his/her suspension.

A student who has been academically suspended from the University a second time shall not be readmitted to the University except in unusual circumstances and then only upon recommendation of the dean of the college in which the student plans to enroll and approval of the University Senate Council.

Once reported to the University Registrar, an academic suspension may be rescinded by the dean only in the event of an error in the determination of the student's eligibility for suspension, an official grade change that alters the student's suspension eligibility, or exceptional circumstances.

Reinstatement

After they have remained out of the University for at least a semester and a summer session (a semester for students academically suspended at the end of a summer session), students who have been academically suspended may only be reinstated by the dean of the college in which they plan to enroll when they present evidence that they are capable of performing at the level required to prevent being suspended a second time. After being reinstated, students must apply for readmission to the University.

General Rules for Reinstated Students

A student who has been academically suspended will, upon reinstatement, be placed on scholastic probation and be subject to final academic suspension from the University if:

- The student acquires any additional deficit during any semester or session while on scholastic probation;
- The student has failed to meet the requirements for removal from scholastic probation by the end of the third semester following the reinstatement;
- Once reinstated students have been removed from scholastic probation, they will be subject to the same conditions for subsequent academic

suspension as students who have not previously been academically suspended.

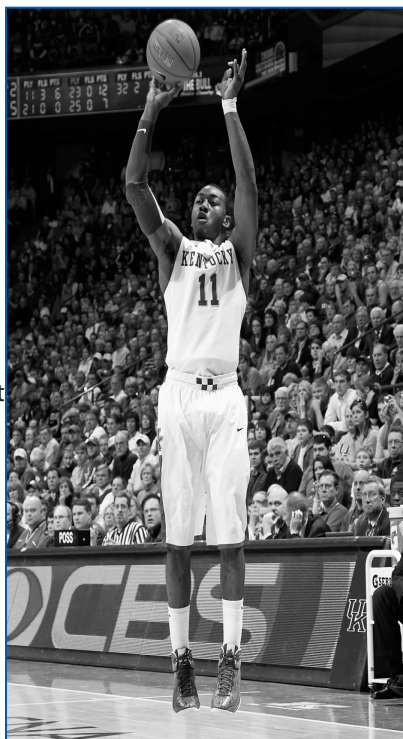
Readmission After Two or More Years (Academic Bankruptcy)

Undergraduate students who have been readmitted through the usual channels after an interruption of two or more years, and who have completed at least one semester or 12 credit hours with a grade-point standing of 2.0 or better after readmission, may choose to have none of their previous University of Kentucky course work counted toward graduation and toward the computation of their grade-point standings. The calculation of the grade-point average after readmission begins with the semester of readmission. In addition, the dean of the student's college may permit such a readmitted student who has elected not to count past work to receive credit for selected courses without including those grades in the computation of the student's grade-point standing.

Part-time as well as full-time students can take advantage of the academic bankruptcy rule. Students need not have been originally suspended from the University to qualify for this option. Attendance at a community college in the UK system is equivalent to attendance at UK itself for the purposes of this option. A student can petition for academic bankruptcy for work done at a community college. This option is not available to a student who transfers in more than 24 credit hours taken at another institution during the first two years after leaving the University of Kentucky.

A student who has completed at least 12 hours of work with a GPA of 2.0 or better would be eligible for academic bankruptcy even if she/he received an "E" in one or more of the courses.

If a student has completed a degree and re-enrolls, she/he may not apply the academic bankruptcy rule to courses taken for the degree already completed. The Academic bankruptcy option may be used only once.



Academic Ombud Services

One of the first things you should do to improve your chances of academic success is become familiar with the offices and the people on campus who can lend a helpful hand or an attentive ear. The Academic Ombud's office is one of those places.

The purpose of the Ombud's office is to listen if you have academic problems which you have been unable to resolve through your instructor or advisor. The office may be able to bring about a reasonable solution through mediation. Hopefully, you will come to the Ombud before you have a serious problem, but whenever you come in, the Ombud will give advice and assistance in helping work through a tough situation or resolving an academic problem. Anything you discuss is held in the strictest confidence.

The Ombud's office is located at 109 Bradley Hall, just across Funkhouser Drive from the Chemistry/Physics Building. Office hours are 8:00 a.m. until 4:30 p.m., Monday through Friday. Telephone messages can be left at any time.

Some examples of academic problems that the Ombud deals with are:

- No syllabus or departures from the syllabus
- Grading Policy
- Examinations and make-up examinations
- Problems with excused absences
- Advising
- Cheating
- Plagiarism
- Program requirements
- Inappropriate/unprofessional instructor behavior
- Sexual harassment

Some Helpful Suggestions For Avoiding Problems Are:

- In order to know if academic rights have been violated, become familiar with the small booklet entitled "Student Rights and Responsibilities" which can be picked up at the Dean of Students office (Room 513 Patterson Office Tower or online at <http://www.uky.edu/StudentAffairs/Code>).
- Keep all tests, quizzes, homework, term papers, handouts and syllabi as supportive material until a satisfactory grade has been awarded.
- Be sure to keep communication open between you and your instructor. Take advantage of appropriate channels within the college, such as the course coordinator, department chairperson and representative of the dean's office. If there are difficulties in communicating, contact the Ombudsman's Office. Remember, when voicing a complaint, a student must have sufficient evidence to support his or her case.
- Be aware of program requirements, deadlines, and examination dates.

Registration and Add/Drop

Registering for classes involves three basic steps:

- Contact the CATS Center in October (fall semester) or March (spring semester) for advising instructions specific to your college and major.
- Set up appointment and meet with campus advisor prior to registration date.
- Review planned schedule with a member of the CATS staff. You have 72 hours from the time your window opens to register for classes. You may register later if your class schedule conflicts with the appointment date and time; however, it is to your advantage to register as soon as possible. You do not need to miss classes in order to advance register. Advance registration is not an excused absence.

If you need to change your schedule (add/drop) after you have registered, contact the CATS Center for instructions.

Procedures for Dropping a Class

1. Secure a Petition to Drop a Course from the Center for Academic and Tutorial Services (CATS).

2. Have your coach review and approve the petition to drop the course.
3. Have your CATS advisor review and approve the petition to drop the course.
4. Have the Compliance Office review and approve the petition to drop the course.
5. Return petition to your CATS advisor for processing.

Withdrawal from the University

If you plan on leaving UK before graduation make sure you check out with your CATS advisor. Your advisor can ensure you don't make any mistakes. We want to know if we can help you in any way and we want to know what kind of experience you have had at the University. This helps us create a more positive environment in the future.

Note: If you withdraw from the University and plan on returning, you must reapply for admission. Omission of any of the above steps may result in failing grades for the semester.

The University of Kentucky



Rules and Regulations that affect you



ATHLETIC DEPARTMENT ACADEMIC POLICIES

Class Attendance

A missed class policy will be distributed to each University of Kentucky student-athlete when they arrive on campus. All students are expected to abide by this policy which was instituted by the Southeastern Conference (SEC) in 2008. It is the individual responsibility of each student-athlete to attend all classes when on campus. The head coach is responsible for enforcing this policy. The head coach is also responsible for supplying each student-athlete with a missed-class form at the beginning of each semester. This form notifies professors when the student-athlete will miss class due to travel time for an away event. All student-athletes must submit this form to each of their professors at the beginning of the semester. It is also recommended a student-athlete notify his/her professors at least two days before each event. The student-athlete is responsible for making arrangements to complete all assigned class work.

University of Kentucky Class Attendance Policy

Class attendance is an expectation for all student-athletes at the University of Kentucky. If a student-athlete is not away from campus for competition, the student-athlete is required to be in class. There are times that an emergency or illness is just cause for missing classes. These will be handled on a case by case basis.

All head coaches are required to send a list of travel and competition dates to every professor for every class their student-athletes are enrolled in each semester. Typically, the head coach has the student-athlete take a copy of the travel and competition dates to each professor and ask that the professor sign off, acknowledging receipt of the dates. In addition, student-athletes are responsible, individually, for communicating with their professors in advance of any authorized travel and making arrangements to complete all missed assignments. The student-athlete must report any potential problems with completing required assignments to his/her CATS' advisor prior to travel with the team.

All student-athletes are subject to the following class attendance policy regardless of academic standing or grade point average. The policy will be enforced in the fall, spring and summer sessions.

The Center for Academic and Tutorial Services (CATS) will have the responsibility for (1) monitoring class attendance and (2) notifying all pertinent parties in a timely fashion. CATS' staff will check the classes of monitored and unmonitored student-athletes to ensure class attendance. Faculty reports will be utilized to identify potential attendance problems. All head coaches are responsible to inform their student-athletes that, even though a class may be checked at anytime during the class period (and the student is considered absent if not in class whenever the class is checked), the student-athlete is considered absent if he/she is not in class when the professor begins lecturing.

Following are the penalties for missed classes:

- First absence in a course - Reported to head coach, the operations director and/or liaison to the sport and the senior associate athletics director for compliance.
- Second absence in the same course - Reported to head coach, the operations director and/or liaison to the sport, the senior associate athletics director for compliance and the director of athletics. The parents will be notified via phone or e-mail (if possible) and a letter will be sent to the parent's address of record notifying them that a subsequent absence will result in the student-athlete being penalized and describing all future penalties.

The penalty for a third absence in the same course will be two fold:

(1) Ticket privileges- Student-athletes who receive complimentary tickets for home contests will relinquish their ticket privileges for 10% of the total season. The tickets relinquished will be for the contests immediately subsequent to the reporting of the third absence to the head coach and director of athletics.

(2) Student-Athlete Opportunity Fund- Student-athletes who receive the NCAA Student-Athlete Opportunity Fund will forfeit an amount equal to one-third (Thirty-three percent) of the amount they would normally receive for that semester.

The head coach will meet with the student-athlete.

- Third absence in the same course - The student-athlete's absence will be reported to head coach, the operations director and/or liaison to the sport, the senior associate athletics director for compliance and the director of athletics. The head coach will have the responsibility to notify

the student-athlete that he/she will lose ticket privileges for 10% of the home contests as described above and that he/she will relinquish one-third (thirty-three percent) of the Student-Athlete Opportunity Fund available for that semester. The student-athlete will also be made aware of the penalties for a fourth absence in the same course which are:

(1) Ticket privileges- Student-athletes who receive complimentary tickets for home contests will relinquish their ticket privileges for an additional 50% of the total season. The tickets relinquished will be for the contests immediately subsequent to the reporting of the fourth absence to the head coach and athletics director. The 50% can include post-season competition.

(2) Student-Athlete Opportunity Fund- Student-athletes who receive the "NCAA Student-Athlete Opportunity Fund" will forfeit an amount equal to two-thirds (sixty-six percent) of the amount they would normally receive for that semester.

The student-athlete will be required to meet with the senior associate athletics director for compliance.

- Fourth Absence in the same course - The student-athlete's absence will be reported to head coach, the operations director and/or liaison to the sport, the senior associate athletics director for compliance and the director of athletics. The parents will be notified of the current penalties and penalties for additional absences via phone or e-mail (if possible) and a letter will be sent to the parent's address of record. The head coach will have the responsibility to notify the student-athlete that he/she has lost ticket privileges for an additional 50% of the home contests as described above and that he/she will relinquish two-thirds (total of sixty-six percent) of the Student-Athlete Opportunity Fund available for that semester. The student-athlete will also be made aware of the penalties for a fifth absence in the same course which are:

(1) Ticket privileges- Student-athletes who receive complimentary tickets for home contests will relinquish their ticket privileges for the total season including post-season contests. The tickets relinquished will be for the contests immediately subsequent to the reporting of the fifth absence to the head coach and athletics director.

(2) Suspension from participation - The student-athlete will be suspended from 10% of the next 25% of available contests.

The student-athlete will be required to meet with the director of athletics.

- Fifth Absence in the same course - The student-athlete's absence will be reported to head coach, the operations director and/or liaison to

the sport, the senior associate athletics director for compliance and the director of athletics. Upon notification, the director of athletics will immediately notify the head coach that the student-athlete is to be suspended from 10% of the next 25% of available contests. The head coach will also notify the student-athlete that he/she will be suspended from an additional 10% of the next 25% of available contests for each absence after the fifth absence. The student-athlete will also lose all ticket privileges for the entire season including post-season competition. The parents will be notified of the current penalties and penalties for additional absences via phone or e-mail (if possible) and a letter will be sent to the parent's address of record. The student-athlete will meet with the director of athletics.

Appeals

If a student-athlete believes that the information related to a specific absence is inaccurate, the student-athlete has 24 hours to inform their CATS' counselor that he/she will appeal the absence. The student-athlete must then, within three working days, contact the senior associate athletics director for compliance to arrange for a hearing with the appeals committee.

Suspension Criteria

- 1.) The 10% suspension must be completed within the next 25% of available contests, including post-season competition.
- 2.) The student-athlete and the head coach must have received written notification (letter or e-mail) from the senior associate athletics director prior to the player being suspended from competition.
- 3.) The director of athletics may modify the suspension based on additional information that supports the implementation of other action.

A head coach may have a more restrictive policy but the Athletics Department's Class Attendance Policy will be the minimum acceptable policy for all sports.

Revised 8/19/08

University of Kentucky Athletics Tutoring Session Attendance Policy

Attendance at all scheduled tutoring sessions is an expectation for all student-athletes (monitored/non-monitored and scholarship/non-scholarship) at the University of Kentucky. If a student-athlete is not away from campus for competition or has not been excused from a tutoring session, the student-athlete is required to report to the tutoring session on time. The student-athlete cannot change or cancel a tutoring session. This can only be done by authorized CATS' personnel. There are times that an emergency or illness is just cause for missing a tutor. These will be handled on a case by case basis.

In addition, student-athletes are responsible, individually, for communicating with their tutors in advance of any authorized travel, notifying the tutor that they will not be there. The student-athlete must report any problems with communicating with the tutor regarding travel and competition to his/her counselor. Communication with the counselor in charge of the student-athlete's sport will reduce significantly the probability that the student-athlete will be held accountable for a missed tutoring session.

All student-athletes are subject to the following tutoring attendance policy regardless of academic standing or grade point average. The policy will be enforced in the fall, spring and summer sessions.

The Center for Academic and Tutorial Services (CATS) will have the responsibility for (1) monitoring Tutoring session attendance and (2) notifying all pertinent parties in a timely fashion. All coaches are responsible to inform their student-athletes that they are expected to attend all tutoring sessions on time.

Following are the penalties for missed tutoring sessions:

- First through fourth tutoring session missed in the same course - Reported to head coach, the operations director and/or liaison to the sport and the senior associate athletics director for compliance. The student-athlete will be notified via their official UK e-mail account that they have missed a tutoring session and must reimburse the Athletics Department at a rate of \$10.00 per session missed. The student-athlete must see his/her CATS' counselor to secure a "Missed Tutoring Session Invoice" stating date/time missed and reimbursement amount. The student-athlete will pay the athletics accounting office the reimbursement and receive a receipt. The student-athlete is responsible to take that receipt to his/her CATS' counselor. The student-athlete must

reimburse the UK Athletics Department within ten working days of e-mail notification or the tutor reimbursement will cause all other funding from UK Athletics to be reduced or held until payment is received, such as:

- (1) Per Diem- the reimbursement for the missed tutoring session will be deducted from any per diem that the student-athlete receives at the rate of \$10.00 per session missed.
 - (2) Educational Opportunity Fund- Student-athletes who receive the NCAA Educational Opportunity Fund will have their stipend held until the payment is received.
 - (3) Scholarship Checks – student-athlete scholarship checks will be held until tutor reimbursement is received.
 - (4) Other Funding – any other check or reimbursement due to the student-athlete will be held until tutor payment is received.
- Fifth (or beyond) tutoring session missed in the same course - Reported to head coach, the operations director and/or liaison to the sport, the senior associate athletics director for compliance and the director of athletics. The student-athlete will be notified via their official UK e-mail account that they have missed a tutoring session and must reimburse the Athletics Department at a rate of \$15.00 per session missed. The student-athlete must see his/her CATS' counselor to secure a "Missed Tutoring Session Invoice" stating date/time missed and reimbursement amount. The student-athlete will pay the athletics accounting office the reimbursement and receive a receipt. The student-athlete is responsible to take that receipt to his/her CATS' counselor. The student-athlete must reimburse the UK Athletics Department within ten working days of e-mail notification or the tutor reimbursement will cause all other funding from UK Athletics to be reduced or held until payment is received, such as:

- (1) Per Diem - the reimbursement for the missed tutoring session will be deducted from any per diem that the student-athlete receives at the rate of \$15.00 per session missed.
- (2) Educational Opportunity Fund - Student-athletes who receive the NCAA Educational Opportunity Fund will have their stipend held until the payment is received.
- (3) Scholarship Checks – student-athlete scholarship checks will be held until tutor reimbursement is received.
- (4) Other Funding – any other check or reimbursement due to the student-

athlete will be held until tutor payment is received.

Note: If reimbursement by the student-athlete is not within the ten working day grace period, the student-athlete may also be subject to suspension from practice and competition.

Appeals

If a student-athlete believes that the information related to a specific missed tutoring session is inaccurate, the student-athlete has 24 hours from the time of e-mail notification to meet with his/her academic counselor and submit an acceptable written explanation that the counselor corroborates. If the counselor is not available, the student-athlete must speak with his/her Academic Graduate Assistant (AGA).

A head coach may have a more restrictive policy but the Athletics Department's Tutoring Session Attendance Policy will be the minimum acceptable policy for all sports.



Revised 8/7/2008

Weapons Policy

The University of Kentucky prohibits possessing a deadly weapon on University property without authorization of the Dean of Students. This policy applies to all property and premises owned or controlled by the University, including off-campus facilities used for athletic or other events controlled, sponsored, or managed by the University, including but not limited to the following—classrooms, laboratories, residence halls, hospitals and clinics, office buildings, performance halls, museums, athletics and recreation facilities, farms and forests, parking lots and structures, and all outdoor areas of the campus of any unit of the University. This prohibition is applicable to persons who possess and persons who do not possess lawfully issued licenses (or permits) to carry deadly weapons.

For purposes of this policy, "deadly weapons" means (1) any weapons from

which a shot, readily capable of producing death or other serious physical injury, may be discharged, (2) any knife other than an ordinary pocket knife or hunting knife, (3) bill, nightstick, or club, (4) blackjack or slapjack, (5) nunchaku karate sticks, (6) shuriken or death star, or (7) artificial knuckles made from metal, plastic, or other similar hard material.

Students who possess deadly weapons in violation of this prohibition are guilty of violations of the Code of Student Conduct and are subject to disciplinary action under that Code, including expulsion from the University.

Hazing

Hazing by any action taken or situation created, intentionally or recklessly, whether on or off University premises, to produce mental or physical discomfort, embarrassment, harassment, or ridicule is prohibited. Such abusive activities and situations may include, but are not limited to the following: illegal or harmful use and/or forced consumption of food, alcohol or drugs; paddling in any form; creation of fatigue; personal servitude; physical and/or psychological shocks; wearing apparel which is conspicuous and not normally in good taste; engaging in public stunts and buffoonery; degrading or humiliating games and activities; sleep or food deprivation; any meetings which unreasonably interfere with scholastic activities; and/or any other activities which are not consistent with the regulations and policies of the University of Kentucky.

COMPLIANCE INFORMATION

The NCAA and SEC Manuals contain many rules and regulations which have a direct effect on your eligibility to participate in intercollegiate athletics. It is very important that you become familiar enough with these rules to recognize a situation that might endanger your eligibility.

The following is a summary of some, but not all, of the rules which concern the enrolled student-athlete. These rules generally fall into five categories: (1) amateurism; (2) recruiting; (3) eligibility; (4) financial aid, and (5) awards and benefits. Please take the time to read this summary carefully.

The Compliance Office on the third floor of the Joe Craft Center is always available to answer questions about your eligibility or any other concern that you might have. Please feel free to stop by the office or call either of the individuals listed below:

Sandy Bell
Sr. Associate Athletic
Director for
Student Services
257-6482

John Butler
Assistant Athletic
Director for
Compliance
257-9784

Heather McAtee
Director of Compliance
257-5475

Katie Hardie
Compliance Coordinator
257-8604

Amateurism

Eligibility

Only an amateur student-athlete is eligible to compete in intercollegiate athletics in a particular sport. This amateur status may be lost if the student-athlete:

- Accepts pay or promise of pay for using his/her athletic ability
- Signs a contract or any other type of agreement to play professional athletics
- Competes on a professional team, even if no pay is received
- Enters into a professional draft or an oral or written agreement with an agent to negotiate a professional contract

The "pay" mentioned above is not limited to the receipt of cash but may also be:

- Excessive or improper expenses
- Some forms of educational expenses based on athletic ability
- Special treatment or services
- Other awards or benefits

Be careful about accepting any type of “award” based on your athletic ability. When in doubt, check with the Compliance Office before signing or accepting anything.

Agents

The rule concerning agents also states that amateur status will be lost if a student-athlete:

- Agrees that an agent can represent him/her after his/her eligibility is completed
- Accepts transportation or any other benefit to the athlete or his/her family or friends from a person who wants to represent the athlete in marketing his/her athletic ability

Employment

Any student-athlete may be employed, as long as employment is coordinated through the UK Compliance Office. A student-athlete may work and receive earnings from a legitimate on or off campus employer. There is no longer a limit on the amount of money a student-athlete can earn given that the student-athlete is only paid at a rate commensurate with the going rate in that locality for similar services.

A student-athlete may receive compensation for teaching or coaching skills or techniques in his or her sport on a fee-for-lesson basis, provided:

- UK athletic facilities are not used.
- Playing lessons are not permitted (Example: A tennis student-athlete could not just play a match and receive compensation).
- The student-athlete submits documentation of the recipient of the lesson(s) and the fee charged for the lesson(s).
- The compensation is paid by the lesson recipient (or the recipient’s family) and not another individual or entity.

Prior approval and written documentation are required for any employment arrangement to protect your collegiate eligibility. Please contact John Butler, Assistant Athletics Director/Compliance @ 859/257-8604 if you wish to be approved.

Promotional Activities

At times, you may be requested by UK or a charitable organization to participate in some type of promotional activity. Please remember the following:

- Any activity in which you are invited to participate must be cleared through the Compliance Office.
- Your name, picture or appearance may only be used with the

- approval of your coach and the Athletic Directors.
- Radio and television appearances should be approved by the Compliance Office.

When your participation in the activity has been approved, there is a form in the Compliance Office that must be signed by you, a representative of the sponsoring organization, and the Athletic Director.

Recruiting

Permissible Contacts

- You may write to the prospect at any time, although it cannot be at the direction of the coach.
- You may have person-to-person contact with a prospect who is on campus for his/her official or unofficial visit.
- You may receive telephone calls at the expense of the prospect on or after July 1 following the completion of their junior year of high school.

Student Host

When you are requested by the coaching staff to serve as student host to a prospect on campus for his/her official visit:

- You may receive a maximum of \$30 for each day of the visit to cover the actual costs of entertaining the prospect. This money may not be used for the purchase of souvenirs such as T-shirts or other items.
 - You may receive a complimentary admission to a campus athletic event, if the admission is used to accompany the prospect.
 - If more than one student-athlete is hosting the recruit, each student-athlete must be educated regarding the rules for Official Visits. This rules education must be completed with the Compliance Office Staff regardless of whether or not the host is receiving expense money. The student host expense money can be allocated to more than one student host during the visit of a prospect.
-
- A non-qualifier may not serve as a student host during his/her first year of residence.
 - You may not accept the use of an automobile from UK or a representative of its athletic interests.
 - You may not transport or entertain the prospect more than 30 miles from the campus.

- You and the prospect shall not participate in any gaming, wagering, or gambling activities during the visit.
- You and the prospect shall not engage in any activities or events at any location that are improper, illegal, or representative of any sense of impropriety (e.g. use of escorts, exotic dancers/strippers, visiting adult entertainment establishments are not permitted).
- The prospect will have a curfew of 12:00 a.m. unless they are participating in activities supervised by the UKAA coaching staff or administration. The head coach in each sport can establish earlier curfew times at his/her discretion.

When you receive the expense money, you will be asked to read and sign a Student Host Receipt Form, which reviews these rules. In addition, at the end of the visit, the prospective student-athlete and the student host will affirm by signature on the Post Official Affirmation Form that all rules, regulations, and policies were followed during the Official Visit. If you have any questions about your role as student host, please contact the Compliance Office.

Eligibility

Full-time Enrollment

To be eligible for practice and competition, a student-athlete must be enrolled in a minimum of twelve (12) credit hours throughout the semester. If you drop below 12 hours at any time during the semester, you immediately become ineligible for both practice and competition. The only exceptions to this rule are as follows:

- A senior in his/her last semester who needs fewer than twelve hours to complete his/her degree.
- Graduate students who only need nine hours to be considered full-time.

Seasons of Competition

You are allowed to compete in four seasons of competition in any one sport. These four seasons of participation must be completed within five calendar years from the beginning of your first semester of full-time enrollment at any collegiate institution. Time spent in the armed services, on official church missions or with recognized foreign aid services of the United States government is exempted from the application of the five-year rule.

Continuing Eligibility

Rule for Students Entering Full time after August 1, 2003

Those student-athletes first entering any collegiate institution (junior college, four year college, etc.) as a full-time student after August 1, 2003 must satisfy the following satisfactory progress requirements:

1. Grade-Point Average
 - (a) 90 percent (1.80) of the institution's overall minimum grade-point average required for graduation for a student-athlete entering his or her second year (third full-time term) of collegiate enrollment;
 - (b) 95 percent (1.90) of the institution's overall minimum grade-point average required for graduation for a student-athlete entering his or her third year (fifth full-time term) of collegiate enrollment;
 - (c) 100 percent (2.00) of the institution's overall minimum grade-point average required for graduation for a student-athlete entering his or her fourth year (seventh full-time term) and any subsequent year of collegiate enrollment.

2. Percent of Degree:
 - (a) Complete 40 percent of his or her degree program by the start of his or her third year (fifth full-time term) of collegiate enrollment (33 percent for a five-year degree program);
 - (b) Complete 60 percent of his or her degree program by the start of his/her fourth year (seventh full-time term) of collegiate enrollment (50 percent for a five-year degree program);
 - (c) Complete 80 percent of his or her degree program by the start of his or her fifth year (ninth full-time term) of collegiate enrollment (67 percent for a five-year degree program).

3. Satisfactory progress:
 - (a) Satisfactorily complete 24 semester or 36 quarter hours of academic credit prior to the start of the institution's third semester or fourth quarter following the student-athlete's

- initial full-time enrollment;
- (b) For each academic year, complete 18 semester or 27 quarter hours during the regular academic year or previous two semester or three quarters (excluding summer); and
 - (c) For each regular academic term, earn six semester or quarter hours to be eligible for the next regular academic term. Summer hours cannot be used to fulfill this requirement.

Post Season Competition and Continuing Eligibility

To be eligible to represent an SEC institution in post-season competition a student-athlete must pass (6) hour of degree credit in the academic term that concluded immediately prior to the post-season completion regardless of whether the competition occurs at the end of the term or during the subsequent term.

The credit hours must be earned during the academic year.

If at any point in your college career, you decide to change your major, you must receive approval from the CATS academic counselor assigned to your sport, the Director of Academic Services in CATS, and the Compliance Office.

Transferring

If you have an interest in transferring from the University of Kentucky to another institution, please contact the Compliance Office to determine how this transfer might affect your future eligibility.

Any student-athlete considering the possibility of a transfer must meet with the Assistant Athletics Director for Compliance or Director of Compliance to receive the information necessary to make an informed decision. This information will include, but is not limited to, the following:

- Eligibility ramifications related to the National Letter of Intent;
- Eligibility ramifications related to NCAA transfer rules;
- Rules governing transfer within the SEC;
- Transfer decisions which will require a year of residence;



- Restrictions on institutions to which they will not be released per NCAA bylaw 13.1.1.3; and
- NCAA rules governing contact with coaching staff members of other institutions prior to receiving a written release.

After this discussion, if the student-athlete is still interested in transferring, the Compliance staff will direct him/her to speak with their head coach and then return to the Compliance Office with a list of those schools to which a written release should be sent.

The Compliance Office will verify the list with the head coach to make sure there are no objections to releasing the student-athlete to any of the listed institutions.

If there is a discrepancy between the institutions submitted by the student-athlete and those to whom the head coach is willing to release, the Athletics Director, Head Coach and the Associate Athletics Director for Compliance will meet to discuss what action should be taken. If necessary, the case can be appealed to the Financial Aid Appeals Committee for all students.

Ineligibility

If you become ineligible, UK is obligated to withhold you from all intercollegiate competition. If the University decides that the circumstances warrant restoration of your eligibility, we will appeal to the NCAA Eligibility Committee on your behalf.

Academic Performance Program (APP)

The academic progress rate (APR) is a term-by-term measure of eligibility, retention and graduation for student-athletes who have received athletics scholarships during each academic term (Fall and Spring semesters). Each student-athlete who receives athletics aid during each semester is awarded two points if they meet academic eligibility standards and remain with the institution. A team's APR score is the points earned by the team during the year divided by the total points possible. An APR score of 925 for each team is the cut score. If the team is under the 925 and loses a student-athlete who was academically ineligible and did not return to the institution, the team cannot reward that grant-in-aid to another player for one year.

The APR is still in effect for student-athletes who have exhausted eligibility but continue to receive athletics aid. Each student-athlete can affect the APR score of the entire team. There is an expectation that the student-athlete receive his/her undergraduate degree within ten semesters. Before making any decision concerning changing your academic major, leaving the institution for any reason (e.g. going

professional, transferring), or any other situation, please contact the Compliance Office so they can assist you with making the best decision for the team and yourself.

Financial Aid

Financial Aid Limit

A full grant-in-aid is financial aid that covers the cost of tuition and fees, room and board, and required course-related books.

Countable and Non-Countable Aid

There are many other types of financial aid that may be awarded to a student-athlete in addition to his/her athletic grant. Some of these awards are treated as “countable” aid, which means they must be included in the individual’s financial aid limit. “Non-countable” aid is financial assistance that may be received in addition to the student-athlete’s institutional aid without counting against the individual’s financial aid limit. The following is a listing of the most frequently received forms of countable and non-countable aid. However, if you are receiving aid that does not seem to fit into any of these categories, please contact the Compliance Office to see how the acceptance of that aid will affect your financial aid limit and your eligibility.

Countable Aid

- Governmental Grants where the recipient or the amount may be determined by the University of Kentucky (e.g. SEOG, Multicultural Grant, etc.)
- Scholarships or aid programs that are awarded through the University of Kentucky (e.g., Multicultural Scholarships)
- Financial aid awarded through an established and continuing outside program (e.g. National Football Foundation, Optimist Club, National Merit Corporation, etc.) for the recognition of outstanding high school graduates in which athletics participation may or may not be a major criterion. These awards must be sent to the UK Financial Aid Office for distribution.

Non-Countable Aid:

- A student-athlete may receive a Pell Grant in combination with other institutional financial aid. A student-athlete may receive other financial aid unrelated to athletics ability provided the overall total

- does not exceed the institution's cost of attendance amount.
- The NCAA does allow scholarship student-athletes to work during the academic year. If you plan on working you must be approved by the Compliance Office and follow the established rules and procedures.
 - Legitimate loans, based upon a regular repayment schedule, available to and administered on the same basis for all students (e.g. Perkins Loan, Guaranteed Student Loan, PLUS Loan, etc.) do not count against the financial aid limit.
 - An established honorary academic award for outstanding academic achievement or a research grant which is based on the candidate's academic record at the University of Kentucky and is determined by competition among the students of a particular class or college at UK.

Incoming Student-Athlete

The recipient shall be admitted to UK in accordance with regular, published entrance requirements.

- The recipient is subject to NCAA transfer rules
- During the summer term, the recipient may not engage in any organized athletics practice activities
- The awarding institution certifies in writing that the student's financial aid was granted without regard in any degree to athletic ability

Renewal, Reduction, or Non-Renewal of Aid

NCAA regulations require the renewal of institutional athletics financial aid be made on or before July 1 prior to the academic year in which it will be used. If you received athletically related financial aid the previous academic year and still have eligibility remaining, you will be notified in writing whether your aid has been renewed, reduced, or cancelled. Athletics aid granted by any NCAA member institution may not be awarded for a period or more than one year (Fall and Spring Semesters). At the end of each academic year, aid may be renewed, reduced, or cancelled. Institutional athletics aid is a performance based scholarship. All student-athletes are expected to be good citizens, good students, and meet performance expectations in their sport. Failure to meet any one of these three requirements may result in a loss of athletics aid. Should your athletics aid be reduced or cancelled, you have a right to a hearing upon request.

During the academic year of the award, your institutional athletics financial aid may be reduced or cancelled if the recipient:

- Renders himself or herself ineligible for intercollegiate competition.
- Fraudulently misrepresents any information on an application, letter of intent or financial aid agreement.
- Engages in serious misconduct warranting substantial disciplinary penalty.
- Voluntarily withdraws from a sport for personal reasons.

Institutional athletics financial aid may not be reduced or cancelled during the academic year of its award:

- On the basis of a student's athletic ability, performance, or contribution to a team's success.
- Because of an injury that prevents the participant from participating in athletics.
- For any other athletics reason.



Procedures for Receiving Summer Financial Aid

Financial Aid for Student-Athletes with Eligibility Remaining

Any student-athlete who has eligibility remaining and is interested in attending summer school on athletics grant-in-aid must obtain a "Summer School Athletics Aid Application" from their coach. The student-athlete must complete the form and return it to their coach. Each coach has a specific number of summer school grants-in-aid available and will review each request. The coach will approve the student-athletes who will receive athletics aid within the coach's summer scholarship limit. The coach will notify the CATS counselor of his/her support, Compliance, and the Business Office of the student athletes they have approved for summer school.

Post Eligibility Grants-In-Aid

The following procedures pertain to Financial Aid for student-athletes who have exhausted their five years of athletics grant-in-aid within six years of their initial eligibility or are requesting aid for a term beginning six years after their initial attendance at the University of Kentucky (post-eligibility student-athletes):

Any student-athlete requesting aid beyond the NCAA allowable six years as defined above may apply to the athletics department for financial assistance.

The Post Eligibility Student-Athlete must follow the steps below:

1. Any post-eligibility student-athlete requesting financial assistance must complete an "Exhausted Eligibility Aid Audit Form." The post-eligibility student-athlete must meet with a CATS counselor to discuss a course of action and to secure the Audit form.
2. The student must take the Exhausted Eligibility Aid Audit Form to the Dean's office of the college where the student plans to enroll and complete degree requirements. The Dean or his designee must sign off on the audit form as to the remaining requirements the student must complete to graduate.
3. The post-eligibility student-athlete must then have the head coach of his/her sport sign the recommendation on the audit form indicating that the head coach supports this student-athlete's application for post-eligibility financial aid. If the post-eligibility student-athlete's head coach is no longer here, the CATS' counselor (if still here from when the student-athlete attended) or the Associate Athletics Director can sign the recommendation.

4. The post-eligibility student-athlete then returns the completed Exhausted Eligibility Aid Audit Form to the Associate Athletics Director for Student Services. The Associate Athletics Director for Student Services in collaboration with the Senior Associate Athletics Director and the Athletics Director will review the post-eligibility student's request and determine the award of aid.
5. In all cases, the post-eligibility student-athlete will only receive an amount equal to the percentage of grant-in-aid he/she received while competing up to a maximum of tuition, books and course related fees.
6. The post-eligibility grant-in-aid is awarded on a term to term (including summer school) basis contingent on funds being available and the academic progress of the post-eligibility student-athlete.
7. Post-eligibility grants will only be awarded based on the available funds in the post-eligibility budget.

Awards and Benefits

Athletic Awards

Athletic awards given to individual student-athletes are limited to those approved or administered by UK, the SEC or an approved agency. If you have any doubt whether an award that you are to receive has been approved, contact the Compliance Office before accepting the award.

Complimentary Admissions

The University of Kentucky may provide four complimentary admissions per home or away contest in the sport in which you participate. These admissions must be provided under the following conditions:

- Admissions may only be provided through a pass list for the individuals you designate. "Hard tickets" will not be issued.
- In the sports of football and men's basketball, four admissions may be provided to family members, relatives, and fellow students (a student from UK or any other four-year college). No more than one of the four admissions (wildcard) may be used by someone who is not a family member, relative or fellow student.
- In the sports of football and men's basketball in addition to your own family members, relatives or fellow students, specific family members or relatives of a teammate may

use your complimentary admissions if you designate them. However, a teammate may not use your “wildcard” admission.

- A non-qualifier or a student who is fulfilling a year of residence may receive complimentary admission to all of UK’s regular season home contests in his/her sport.

Benefits, Gifts and Services

An enrolled student-athlete may not receive any extra benefit. “Extra benefit” is defined as any special arrangement to provide your relatives or friends with a benefit that is not authorized by the NCAA. The following is a list of some of the things that are permissible for you to receive and a list of some that are not:

Permissible:

You may have an occasional family meal at the home of a staff member or a representative of UK’s athletic interests. However, the meal may not occur at any site other than the staff member or representative’s home.

You may accept transportation and meal expenses when participating in a luncheon meeting of a booster club or civic organization, provided the meeting occurs within a 30-mile radius of the UK campus. You may not miss class to participate in such an activity.

Non permissible:

- You may not receive a special discount, payment arrangement or credit on a purchase (e.g. airline ticket, clothing) or a service (e.g. laundry, dry cleaning).
- Professional services provided at less than the normal rate or at no expense to you are considered an extra benefit unless they are available on the same basis to the general student body.
- You may not use a telephone or credit card for personal reasons without charge or at a reduced cost.
- You may not receive services (e.g. movie tickets, dinners, use of car) from commercial agencies (e.g. movie theaters, restaurants, car dealers) without charge or at reduced rates, or free or reduced-cost admission to professional sports organizations, unless such services are available to the student body in general.
- An employee of UK or representative of UK’s athlete interests may not provide you with extra benefits or services including, but not

limited to:

- A loan of money
- A guarantee of bond
- The use of an automobile
- Signing or co-signing a note

Note: You may not receive preferential treatment, benefits or services (e.g. loans on a deferred pay-back basis) for your athletic reputation or skill or pay back potential as a future professional athlete. Also, you may not accept athletic equipment, supplies or clothing (e.g. tennis racquets, golf clubs, balls, shirts) from a manufacturer or commercial enterprise. Such items may be provided.

If you find yourself in a situation that does not seem to be covered by any of the above rules, please contact the Compliance Office.

The University of Kentucky



Medical



Medical Information

Every student-athlete at the University of Kentucky is entitled to state-of-the-art medical care while participating as a Kentucky Wildcat. The Athletic Training/Medical Staff coordinates and delivers professional and comprehensive preventative, treatment, rehabilitation and counseling services to all UK athletes.

The goal of the Athletic Medicine Program is to keep each student-athlete healthy and injury free. In the unfortunate case of injury or illness, the staff will provide quality medical care enabling the athlete to return to participation both as a student and athlete.

There are specific guidelines the Athletics Department, team physicians, athletic trainers, coaches and athletes follow to comply with NCAA, SEC, University and Athletics Department rules and regulations. A summary of those guidelines are contained in this handbook. The latest edition of the NCAA Sports Medicine Handbook is available to student-athletes. Any staff athletic trainer can provide a copy upon request.

The Athletic Medicine Program

The Athletic Medicine Program provides comprehensive sports medicine care for athletically related illnesses and injuries. This is subject to NCAA, SEC and Athletic Department rules and within the limitations of the Athletic Department's insurance policies.

The Athletic Medical Staff is comprised of a Head Team Physician, Sports Medicine Team Physicians and Orthopedic Team Physicians. Our Team Physicians are located in the University Health Service and UK Sports Medicine Clinic. Physicians in other specialty areas are available to our Team Physicians for consultations. A Team Physician and a Staff Athletic Trainer will coordinate all consultation appointments. The consulting physician will evaluate the athlete's injury and prepare a report for our Team Physician who will then determine the appropriate course of action for the injured athlete to follow.

The full-time certified Athletic Training Staff consists of a Director of Sports Medicine, Head Athletic Trainer, and five Staff Assistants. There are also eleven Graduate Assistants who are certified or eligible for certification. Undergraduate students also play a vital role in our athletic training program.

After the athletic training staff evaluates an injured student-athlete, specific guidelines are followed for medical referral. Following evaluation, treatment and rehabilitation programs are developed specifically for the illness or injury.

The Athletic Training Department maintains eight athletic training rooms to meet athletes' needs. The three main athletic training rooms are located in the E.J. Nutter Training Facility, Shively Sports Center and the Joe Craft Center. Each contains state-of-the-art equipment for the treatment and rehabilitation of athletic injuries. Five satellite athletic training rooms are

equipped to handle routine athletic training needs and treatments. All advanced treatment and rehabilitation are performed under the supervision of members of the full time athletic training staff.

As part of the athlete's educational program, the athletic training staff arranges lectures on medically related topics for individuals, groups or teams. The athletic training staff also offers instruction in athletic training skills, first aid and CPR. Other specific services are detailed in this handbook.

Role of the Athletic Trainer

The Athletic Trainer is an allied health professional specifically educated and trained in the total health care of the athlete. Along with a college degree, he/she must pass a National and State Certification examination, as well as maintain continuing education units. Five major domains of the athletic training profession are:

- A. Prevention of Athletic Injuries
- B. Recognition, Evaluation and Immediate Care of Athletic Injuries
- C. Rehabilitation and Reconditioning of Athletic Injuries
- D. Health Care Administration
- E. Professional Development and Responsibility

The Certified Athletic Trainer works under the direction of a licensed physician when practicing the art and science of athletic training. All University of Kentucky Staff Athletic Trainers are nationally and state certified.

Your Rights as a University of Kentucky Athlete

As a University of Kentucky athlete being treated by a member of the University of Kentucky Athletic Training-Medical Staff, you have the right to:

- A. Considerate and respectful treatment and care.
- B. Complete information regarding your condition, treatment, rehabilitation and prognosis in terms and language you can understand.
- C. Participate in the planning of your medical treatment and rehabilitation program.
- D. Confidential treatment of your personal and medical records.
- E. Approve or refuse the release of your personal records and medical information.
- F. Expect the Athletic Trainers and Medical Staff to make a reasonable response to your requests.
- G. Expect continuity of care.

Your Responsibility as a University of Kentucky Athlete

In order to achieve the objective of quality medical care, each athlete has a responsibility to:

- A. Be honest and direct with the athletic trainers caring for you.
- B. Report all injuries and illnesses immediately.
- C. Follow the treatment and rehabilitation plan prescribed. It is your responsibility to advise the athletic trainers if there is any problem or reason why you cannot follow the plan.
- D. Report to the athletic training room daily for treatment until you are cleared by the athletic training/medical staff.
- E. Report any change in condition to a staff athletic trainer.
- F. Understand your health problem and the treatment and rehabilitation program to your satisfaction.

If you do not understand any part of your program, ask a staff athletic trainer or physician. Be sure you know what is expected of you.

University Health Service

All full-time students attending UK pay a mandatory health service fee during the fall and spring semesters. This fee entitles the student to be evaluated and treated without cost for most services and with minimal charges for others.

The health service fee is optional in the summer. The Athletics Department STRONGLY recommends all student-athletes attending summer school pay the optional health service fee.

The University Health Service is located in the new building adjacent to the Kentucky Clinic. Students may use the parking garage at the North end of the plaza (there is a parking fee). You should bring your student ID card and any necessary paperwork from the athletic training room with you.

University Health is open from 8:00 a.m. to 6:00 p.m., Monday through Friday, and 9 a.m. to 11 a.m. on Saturdays during the school year. These times are subject to change.

[All appointments must be made upon approval by the Athletic Training Staff. Be sure your appointment does not conflict with classes or tutoring sessions.](#)

Medical Insurance

The University of Kentucky Athletics Department provides secondary and catastrophic medical insurance ONLY. The student-athletes' or their parents' medical insurance will serve as primary for all injuries and illnesses. If you are not covered by an insurance plan, verification may be required. UKAD will be responsible for any deductible or balance after the student-athlete's insurance policy has paid. This will only apply for athletic related injuries, which occur during an organized and supervised workout, practice or competition.

Insurance information must be on file prior to the start of practice. Student-athletes who do not have their insurance information on file or made special arrangements will not be permitted to participate in any activity. All scholarship and non-scholarship athletes should be covered by personal or family health insurance, especially for bills resulting from injuries or illnesses not covered by the UKAD policy.

UKAD will coordinate all benefits for athletic related injuries and illnesses. If you have any questions, please contact our insurance coordinator, Kim Spencer, at 859-257-4191.

NCAA Regulations

The NCAA regulations state the Athletic Department may help pay for the medical care of the student-athlete only when the injury is directly related to the athlete's sport participation and occurs during a supervised practice, conditioning session or competition.

Illnesses that are not directly related to the student-athletes athletic participation (example: flu, respiratory infections, appendicitis, etc.) will be the responsibility of the student-athlete. NCAA regulations are subject to change and may affect UKAD's payment policy.

Preseason Physicals

All student-athletes must pass a physical examination before being allowed to participate. Football, Soccer, Cross Country and Volleyball physicals will be performed prior to the start of school in August. Other sports will be scheduled soon after the start of school. All physicals will consist of any necessary blood work, vision screening, general medical exam (heart, lungs, abdomen, etc.) and an orthopedic screening. Further evaluation will be pursued if necessary.

Anyone missing a scheduled physical without prior permission from a staff athletic trainer will be responsible for obtaining one at his/her own expense. No participation or practice will be allowed until a copy of a current physical is on file in the athletic training room.

Pre-Existing Injuries or Conditions

The University of Kentucky Athletics Department is not responsible for medical care related to pre-existing injuries or conditions that occurred prior to joining a UK Athletic Team. Disqualification from participation due to that pre-existing problem is at the discretion of the University of Kentucky Medical Staff. Failure to report and document pre-existing problems releases the University of Kentucky Athletics Department from any liability in the event of aggravation or worsening of the initial injury.

The University of Kentucky Athletics Department will not be financially responsible for medications for long term pre-existing conditions such as asthma, allergies, diabetes and acne unless the condition affects the student-athlete's ability to participate. The athletic medicine staff will be happy to assist the athlete in ordering and coordinating the administration

of the medication, but the Athletics Department may not be financially responsible for those medications.

Close-Out Screening

Upon graduation, transferring, or otherwise termination of an athletic career at the University of Kentucky, all athletes should meet with their assigned athletic trainer to review their medical history. This meeting is mandatory if the student-athlete has not fully recovered from an injury sustained while playing. It is the student-athlete's responsibility to request this meeting. Failure to do so will disallow future bills relating to existing injuries to be paid by UKAD. The student-athlete and/or athletic trainer may request an examination by a Team Physician to determine the status of the injured student-athlete. All female student-athletes are encouraged to meet with Jill Kindy to discuss changing nutrition needs. If surgery or further treatment of an athletic related injury is required, it must be performed within one year of leaving the team. No procedure will be paid for unless coordinated through the University of Kentucky Athletic Training Department. UK will not be financially responsible for an injury or condition that is not documented in the athlete's permanent medical file.

Fifth Year Non-Competing Scholarship Athletes

Once a student-athlete's eligibility is completed, NCAA regulations will not permit UK to be financially responsible for any new medical conditions. As part of a scholarship, a fifth year non-competing student-athlete will have his/her mandatory health fee paid. This entitles the student to specific services (see previous section on University Health Service). The student will be responsible for any and all bills.

Reporting Injuries and Illnesses

If you think your injury/illness may affect your sport participation, you **MUST REPORT** to a staff or graduate assistant athletic trainer immediately for evaluation. Any athlete who comes to practice or games with a previously unreported injury/illness that prohibits them from playing will be subject to disciplinary action.

Reporting Times for Injuries and Illnesses

All injured or ill student-athletes **MUST REPORT** to the Joe Craft, Shively Sports Center or E.J. Nutter Training Facility Athletic Training Rooms prior to 9:00 a.m. (specific times for some sports may vary) for evaluation, treatment and any necessary referral. Any athlete who is unable to fully participate in practice or competition must be seen daily in the athletic training room until cleared by athletic training staff. The Athletic Training Staff will notify the athlete's coaching staff of his/her status and alternate workouts will be developed.

Athletic Training Room Hours during the sport season:

Nutter

open 6:00 a.m. (during football)

8:30 a.m. (other times)

Joe Craft Center/
Shively Sports Center

open 8:00 a.m.

- Saturday, Sunday, Off-Season and Summer hours will be posted.
- Satellite athletic training room hours will be posted and will depend on practice and competition schedules.

*****All athletic training room hours are subject to change*****

Emergencies—Evenings or Off-Season

Occasionally, an unforeseen emergency (injury or illness) may occur in the evening after practice or in the off-season. If it is a life or death emergency, dial 911 for help. If not, first try to contact the Athletic Trainer in charge of your sport. If he/she is unavailable, call one of the Staff Athletic Trainers at home. If unable to contact an Athletic Trainer, go to the University of Kentucky Chandler Medical Center Emergency Room unless you have a specific HMO or insurance policy which requires you to go elsewhere. Continue to try to contact a Staff Athletic Trainer. Do not hesitate to call an athletic trainer anytime. Prompt treatment will often hasten your recovery. If this emergency is not directly related to a supervised official practice or competition, the parent or athlete will be responsible for covering the cost. It is still necessary to call the Athletic Training Staff within 24 hours so follow up medical care and documentation can be maintained.

Injuries on the Road

If an athlete is injured or becomes ill during away competitions, and there is no University of Kentucky Athletic Trainer in attendance, the Coach will contact the host Athletic Trainers to be advised on the best route for evaluation and treatment. If an athlete is sent to an emergency room or is hospitalized while on an away trip, it is the responsibility of the coach to contact a UK Staff Athletic Trainer so the coordination of medical care and billing can be properly handled. The athlete must report to the main athletic training room within 48 hours of returning from the competition for follow-up care and to assure documentation of the injury.

Physician Appointments

After the initial evaluation by the Athletic Trainer, if necessary, the student-athlete will be referred to a University of Kentucky Team Physician or to University Health Service for follow up. It is the responsibility of the student-athlete to inform the athletic training staff if a treatment session/physician's appointment conflicts with class time so adjustments can be arranged.

If the student-athlete or parent desires medical care other than that provided by the University of Kentucky Athletics Department Athletic Training-Medical Staff, he/she may do so at his/her own expense. This includes a second

opinion obtained without the coordination or knowledge of the Athletic Training-Medical Staff. Records of physician visits, x-rays, lab results, etc., not initiated by the University of Kentucky Athletic Training-Medical Staff Personnel, must be on file before the athlete will be cleared to participate.

On occasion, a second opinion or referral may be requested by the Athletic Medicine Staff or at the request of the student-athlete's insurance company. All second opinions and referrals will be handled through the University of Kentucky Athletic Medicine Department ONLY. Any appointments made without the coordination of the Athletic Medicine Staff will not be the financial or legal responsibility of the University of Kentucky Athletics Department.

In the event of a conflicting opinion between the two physicians, a third medical opinion will be obtained from a physician mutually acceptable to the athlete, parents and UK Athletic Medicine Staff. This appointment will be made through the UK Athletic Medicine Staff.

IN ALL CASES, HOWEVER, THE FINAL DECISION ON WHETHER OR NOT AN ATHLETE MAY PARTICIPATE IN EITHER PRACTICE OR COMPETITION WILL REST SOLELY WITH THE UK ATHLETIC MEDICINE STAFF.

Medical Excuses for Class

In accordance with established UK policy, no medical excuses will be issued by the medical/athletic training staff for missing classes. Class attendance is an administrative matter between faculty and students. The medical staff may verify prolonged or serious illness to a professor if he/she cannot make a determination after discussion with the student. UK faculty are aware of this "No Excuse" policy.

Prescription Medication

When the athlete is prescribed prescription medication, the following procedure must be followed. If prescribed by a University Health Service Physician, the prescription can be filled at the Kentucky Clinic Pharmacy. If the prescription is from other physicians, bring the prescription to the athletic training room.

The University of Kentucky Athletics Department will not be financially responsible for medications prescribed for any pre-existing medical conditions or non-athletically related injury or illness unless the condition affects the student athlete's ability to participate.

If you are injured or ill, do not assume that the condition is the same as someone else's. Do not share medication. Many athletes have allergies to aspirin, penicillin or other medications. Do not take anything that is not prescribed specifically for you. Medications also react with each other, some foods and alcohol. Make sure the directions are followed exactly. When medication is prescribed, it will work only if taken regularly and properly. All questions regarding your medication should be directed to a staff athletic trainer.

Policies Regarding Specific Medical Conditions

Sickle Cell Trait

The NCAA mandates that all NCAA student-athletes have knowledge of their sickle cell trait status before the student-athlete participates in any intercollegiate athletics event, including strength and conditioning sessions, practices, competitions, etc. The University of Kentucky Department of Intercollegiate Athletics offers sickle cell trait screening in the form of a blood test to all student-athletes as part of the pre-participation physical examination process. Educational information will be provided by the NCAA and UK Athletics Sports Medicine at the time of your pre-participation physical exams.

Concussions

A concussion is a brain injury and all brain injuries are serious. They are caused by a bump, blow, or jolt to the head, or by a blow to another part of the body with the force transmitted to the head. They can range from mild to severe and can disrupt the way the brain normally works. **Even though most concussions are mild, all concussions are potentially serious and may result in complications including prolonged brain damage and death if not recognized and managed properly.** Signs and symptoms of concussion may show up right after the injury or can take hours or days to fully appear (you will receive additional educational information provided by the NCAA). If you notice the symptoms or signs of concussion OR if your teammates, friends, coaches or parents notice any of these symptoms, it is important to seek medical attention right away.

Student-Athlete Responsibility

You will be required to sign a form acknowledging that you have reviewed the material on concussions and head injuries along with your responsibility to report all injuries/illnesses to the medical staff as it relates to student-athletes at The University of Kentucky. You will be given the opportunity to ask any questions and have them answered to your satisfaction.

Contact Lens and Glasses Policy

The NCAA allows the UK Athletics Department to purchase contacts or sport glasses if they are needed by the student-athlete to participate in competition and/or practice in their sport. Regular glasses cannot be provided. UK Athletics will replace contacts or sport glasses only during official practice and/or competition. The student-athlete is responsible for all contact solutions.

To be provided with contacts or sport glasses, the student-athlete must have an annual eye exam. The student-athlete needs to coordinate their eye

appointment through their team athletics trainer. If the student-athlete wants additional features (i.e. contact tinting), the student-athlete must pay for the charges directly to the vendor.

Student-athletes who are no longer eligible to compete (i.e. Exhausted eligibility, Medical Scholarship, 5th Year) are not eligible to receive contacts or sport glasses. Students who attend summer school prior to initial full time enrollment at UK are not eligible to receive contacts or sport glasses until their team starts scheduled practice.

Dental Care

The University of Kentucky Athletics Department is only responsible for dental injuries that occur during organized practice or competition. All dental appointments must be made through the Athletic Training Staff. NCAA regulations do not permit the University of Kentucky Athletics Department to be financially responsible for routine dental care: (for example: teeth cleaning, orthodontics, cavities or removal of wisdom teeth). However, coordination of these services can be handled through the athletic training room at the athlete's expense.

Pregnancy Policy

The University of Kentucky abides by the athletic policies set by the NCAA, the Southeastern Conference, the University's Athletics Department and the insurance carrier. Concerning pregnancy, the following is in effect:

- 1) The NCAA, SEC and UKAD classify pregnancy in the same category as illness or injury. All regulations which pertain to illness or injury with regards to eligibility therefore pertain to pregnancy. The NCAA ruling states "the member institution may approve a one year extension of the five year period of eligibility for a female student-athlete for reasons of pregnancy."
- 2) In the event a scholarship student-athlete becomes pregnant during the period of her award, the student-athlete will receive counseling to review her options and to make a decision in her best interest. The retention of her athletics scholarship will not be a factor in the decision making process. Her decision regarding her pregnancy will not affect her retention of her athletics scholarship.
- 3) The University's insurance carrier only addresses injury and illness related to athletics participation. Since pregnancy is a condition not related to participation in athletics, no insurance coverage is provided.
- 4) The University of Kentucky does provide free pregnancy testing and counseling at University Health Services. These appointments can be made through the Health and Wellness Nurse. The Student Health Insurance Coordinator can provide insurance information to those students enrolled in the University of Kentucky health insurance plan.
- 5) The student-athlete must notify their Head Coach and Athletic Trainer of their pregnancy.
- 6) A pregnant student-athlete must be under the care of a licensed

- physician.
- 7) Permission to participate, deciding when to stop participating and permission to return to participation will be at the discretion of the attending physician and a UK Team Physician. Special consideration will be given to the student-athlete herself. All decisions must be documented and will become part of the student-athlete's medical records. Participation is also based on the prerogatives granted the Head Coach regarding the participation of any athlete.
 - 8) The University of Kentucky Athletics Department will abide by the recommendations of the attending physician and Team Physician regarding participation during and following pregnancy, but assumes no responsibility for complications which may result from continued participation in athletics. The student-athlete will participate at her own risk.

Counseling

At times a student-athlete may need some personal counseling, stress management or other type of psychological or psychiatric services. The UK Athletic Training/Medical Staff will coordinate this service for the student-athlete. The student-athlete's insurance will be utilized for payment.

The student-athlete may use the University Health Service Clinic or the University Counseling Center. There is minimal or no charge to full-time students for use of either of these facilities.

Nutrition Counseling

Counseling is available on an individual or team basis. Appointments or seminars can be coordinated and arranged through the Athletic Training Staff.

Eating Disorders and Disordered Eating

The University of Kentucky has created this policy to address issues of weight and body composition measurements of its female athletes. Eating disorders are easily the gravest health problem facing female athletes; research shows that as many as 1/3 of female athletes exhibit some type of disordered eating patterns, including but not limited to disordered eating, anorexia, bulimia, and binge-eating disorder. There is a growing awareness that the weighing of athletes and comments made to athletes about weight and body composition are not benign actions and, in fact, can encourage the development of unhealthy eating behaviors/ lifestyles.

Eating disorders are often an expression of underlying emotional distress that may develop long before the individual becomes involved in athletics. It has been suggested that stress, whether it be from participating in athletics, striving for academic success, or pursuing social relationships, may trigger psychological problems, such as eating disorders in susceptible individuals. Eating disorders can be triggered in such

individuals by a single event of comments from a person important to the individual. In athletics, such triggering mechanisms may include off-hand remarks about appearance or constant badgering about a student-athlete's body weight, body composition, or body type. ¹

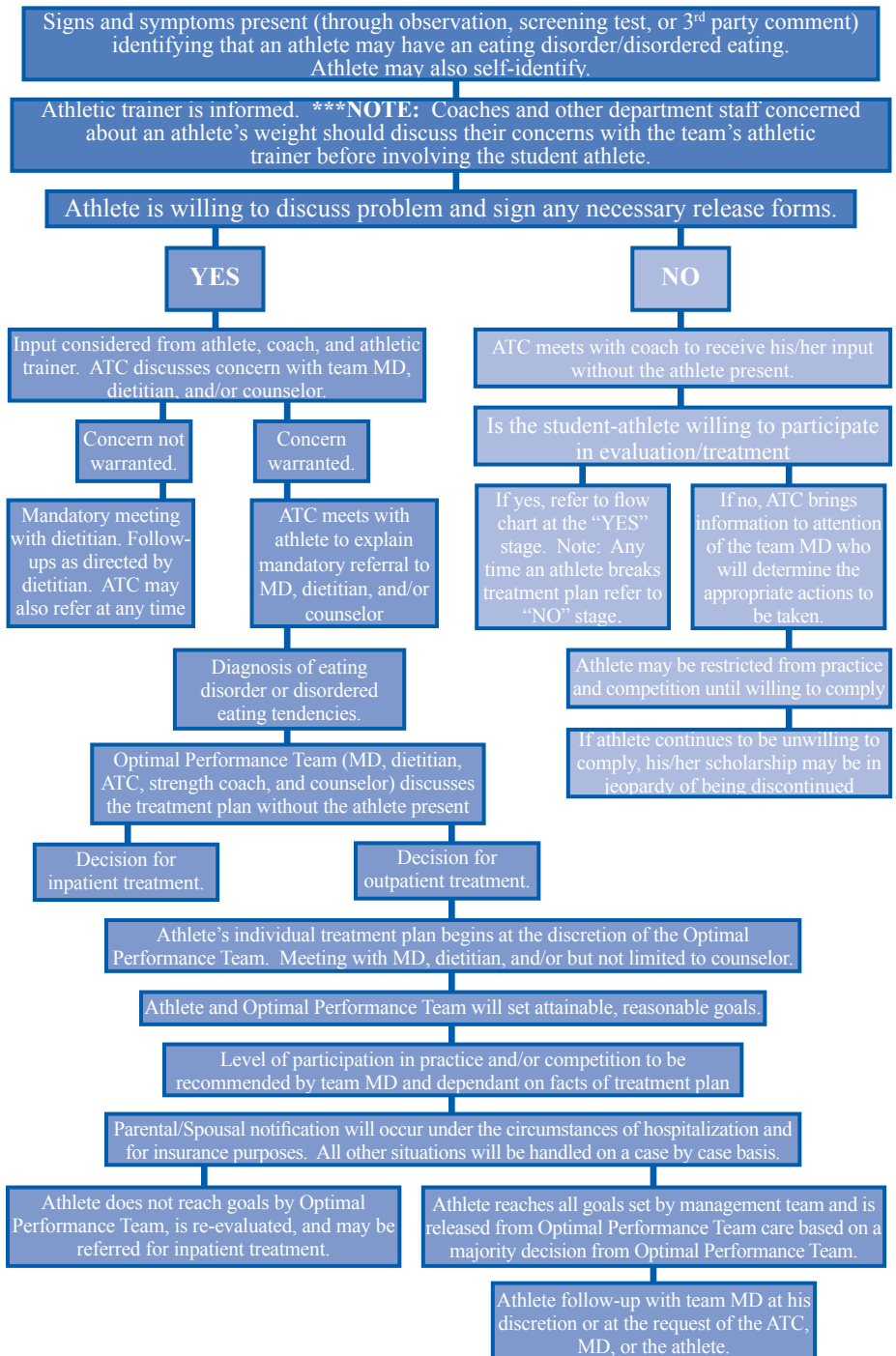
Disordered eating behaviors may impair athletic performance and increase the risk of injury. Decreased energy (caloric) intake and fluid and electrolyte imbalance can result in decreased endurance, strength, reaction time, speed, and ability to concentrate. Because the body initially adapts to these changes, a decrease in performance may not be seen for some time, and athletes may falsely believe disordered eating practices are harmless. To the contrary, food restriction and purging can result not only in menstrual dysfunction and potentially irreversible bone loss but also in psychological and other medical complications, including depression, fluid and electrolyte imbalance, and changes in the cardiovascular, endocrine, gastrointestinal, and thermoregulatory systems. Some of these complications are potentially fatal. ²

What do you do if you suspect a teammate or if you believe that you may have an eating disorder or disordered eating? Contact a member of the Optimal Performance Team or your team athletic trainer.

[Optimal Performance Team](#)

Team Physician:	Jim Jagger, MD	323-5823 ext. 291
Senior Women's Administrator:	Lisa Peterson	257-8607
Mental Health Professional:	Robin Peterson, PhD.	257-8701
Team Dietitian:	TBD	323-5823 ext. 238
Certified Athletic Trainer:	Courtney Jones, ATC	257-6661
Strength and Conditioning:	Marc Hill, SCCC, CSCS Stephanie Tracey-Simmons	257-2672

University of Kentucky Eating Disorder/Disordered Eating Flow Chart



Sexual Assault

In her lifetime, one out of three women in the United States will be sexually assaulted and, one out of four female college students have either been raped or experienced attempted rape. Women of the age ranging from 16-25 are three times more likely to be a victim of rape. An alarming 78 percent of all rape victims know their attackers.

Sexual assault or rape is defined as unwanted sexual behavior; whether it is vaginal, anal, or oral, against a person's will, through the use of threat, force, or coercion. Rape can occur without consent or permission while being asleep, incapacitated, or passed out from alcohol or drug use. The motivation for a sexual assaulter does not involve sexual desire or sexual orientation; it is about power and control.

[What do you do if you or a friend is sexually assaulted? Contact a member of the Optimal Performance Team or your team athletic trainer.](#)

Optimal Performance Team

Team Physician:	Jim Jagger, MD	218-3033
Senior Women's Administrator:	Lisa Peterson	257-8607
Mental Health Professional:	Robin Peterson, PhD.	257-8701
Certified Athletic Trainer:	Courtney Jones, ATC	257-6661
Strength and Conditioning:	Stephanie Tracey-Simmons	257-4229
Strength and Conditioning:	Marc Hill	257-4229

Sexual Assault Protocol

1. Once an athlete notifies an athletic trainer or member of the athletic department staff that he or she has been sexually assaulted, that staff member must immediately contact one of the Team Physicians and follow the protocols as established by the UK office of emergency management.
2. If a Team Physician cannot be notified, the athlete should be taken to the Emergency Room.

Resources

If you or a friend has been the victim of some type of physical or sexual assault, there are several resources available to you.

1. Counseling through the V.I.P. (Violence, Intervention, Prevention) Center at UK. The VIP Center is located in the lower level of Frazee Hall.
2. Counseling at the Bluegrass Rape Crisis Center. www.bluegrassrapecrisis.org or 1-800-656-HOPE.
3. Sexually Transmitted Disease (STD) testing at University Health Services.

Supplements

The use of supplements has become widespread among athletes. The UKAD policy concerning the use of supplements discourages their use. Student-athletes must be cautious of using supplements available through commercial outlets as many contain substances banned by the NCAA. Student-athletes can improve their strength and performance through proper nutrition, conditioning, and rest. UKAD strength staff will consult the athletic training/medical staff and our registered dietician before issuing supplements.

Student-athletes must not use any medication or supplements that have been purchased or given by someone other than the Head Coach or Strength Coach without first contacting a full-time athletic trainer or strength coach. Student-athletes are now required to register all medications and supplements that they are taking. A supplement usage form must be filled out and given to the Head Athletic Trainer. Remember that labeling on these products can be misleading and inaccurate because sales personnel are paid to sell these products. Terms such as “natural” do not necessarily mean “safety” nor does it imply that the NCAA approves the substance. The student-athlete is responsible for knowing what is contained in any supplement that they take. Additional information can be found at www.drugfreesport.com/rec (password: ncaa1).

Alcohol/Drug Education Screening Program

The University of Kentucky Athletic Department has an Alcohol/Drug Education-Screening Program to educate athletes regarding the physical, psychological and social effects of drugs. This program follows all NCAA rules and regulations. The NCAA list of banned drug classes changes regularly. Access the NCAA website at www.ncaa.org/sports_sciences/drugtesting/banned_list.html for the most recent list. UKAD also administers a year round drug-screening program to monitor drug usage among its athletes.

Remember: Any student-athlete involved in an alcohol or drug-related incident including, but not limited to: DUI, fighting, domestic violence, trafficking controlled substances, etc., will be subject to immediate evaluation for possible alcohol or drug abuse. The charge will be investigated by UKAD personnel in conjunction with UK officials. The student-athlete will be required to undergo evaluation, counseling, and a year round drug screening as determined by a University Health Service Substance Abuse Counselor and/or Team Physician. Results may include probation, suspension, and/or termination from the team and can be considered a violation of the Alcohol and Drug Policy as determined by the Athletics Director.

The complete Drug/Alcohol Education-Screening Program is outlined in a brochure that is issued to each student-athlete. Each student-athlete will have the program explained to them and must sign an authorization statement. For questions or additional information, please contact Keith Webster, Head Athletic Trainer at 257-6521.

Tobacco Policy

In accordance with NCAA legislation, the use of tobacco products is prohibited by student-athletes and all game personnel (e.g., coaches, athletic trainers, managers, and game officials) in all sports during practices and competition.

Furthermore, the use of all tobacco products (including but not limited to cigarettes, pipes, hookah, cigars, e-cigarettes, chew, snuff, snus, and other non-combustible tobacco products) is prohibited on the entire University of Kentucky campus.

Resources to help you quit

UK offers individual and group tobacco treatment programs at no cost for one series of classes, including nicotine replacement therapy. Treatment programs are offered at the following locations:

1. University Health Service: www.ukhealthcare.uky.edu/uhs/smokefree.htm
2. Counseling and Testing Center: www.uky.edu/StudentAffairs/Counseling.

Prevention of Infectious Disease

Athletes are susceptible to various infectious diseases. These include Fungal, Bacterial and Viral. HIV (Human Immunodeficiency Virus) causes AIDS (Acquired Immunodeficiency Syndrome). This virus infects the cells of the immune system rendering them unable to fight infection. Hepatitis B is another highly contagious virus that affects your liver. Both HIV and Hepatitis B are commonly transmitted through sexual contact and direct contact with infected blood or blood components. Hepatitis vaccination is available to UK student-athletes. Watch for announcements or ask a staff athletic trainer for details. By practicing good hygiene and utilizing the following procedures, your chances of becoming infected from or transmitting an infectious disease or fungus to another person will dramatically decrease.

The risk of infection can be decreased through:

1. Condoms: should always be used during sexual activity.
2. Open Wound: should be treated by an athletic trainer. The athletic trainer will clean, treat, and dress the wound while using universal precautions, i.e. wearing latex gloves, etc.
3. Hygiene: when you come in contact with blood or body fluid, immediately wash the area with soap and water. During practice see an athletic trainer for a cleaning solution.
4. Proper Disposal of Contaminated Material: it is imperative all material (bandages, towels, laundry, etc.) is properly handled. All bloody bandages should be removed and discarded only in red cans found in the athletic

training room only.

5. Laundry: all workout clothing and uniforms should be washed after each use. Laundry should not be left lying around for others to handle. All towels and uniforms should be given to your team manager.

6. Universal Precautions: the athletic training staff and team manager must follow Universal Precautions when performing their jobs. The Athletic Trainers will wear rubber gloves and other protective equipment when treating wounds or when handling potentially infectious material. All material used to treat an athlete with an open wound, or other medical procedure will be properly disposed according to O.S.H.A. regulations. Team managers will wear gloves and other protective equipment when handling towels, laundry, and other potentially contaminated material. These procedures were developed to prevent the spread of infection.

Athletic Training Room Rules

1. Do not touch or move an injured athlete. Moving an injured athlete may cause further injury. You can help the injured athlete by alerting an athletic trainer to the injured player.
2. The athletic training room should be treated as a medical facility. Improper behavior will not be tolerated.
3. Treat the athletic trainer and medical staff with respect. They are here to help you. If you have a problem with a student athletic trainer, see the head athletic trainer to work things out.
4. The athletic training room is not a lounge. It is to be used only for taping, evaluation, treatment, and rehabilitation or to speak with one of the athletic trainers.
5. Stay out of the athletic training staff offices, the doctor's office and the storage room unless you have permission.
6. Do not use the athletic training room phones.
7. Tobacco use is not allowed.
8. You must wear proper attire in the athletic training room.
9. Do not remove anything from the athletic training room without first receiving permission from an athletic trainer.
10. Shower after practice/workouts before coming to the athletic training room for evaluation, treatment, rehabilitation or consultation.

11. Treatments are initiated by the University of Kentucky Staff Athletic Trainers only. Do not perform your own treatments.
12. If you are injured, check with a staff athletic trainer before getting into the hot whirlpool or Jacuzzi.
13. Eating and drinking are not permitted in the athletic training room.

University of Kentucky



FACILITIES



FACILITIES

Center for Academic and Tutorial Services

The Ohio Casualty Group Center for Academic and Tutorial Services (CATS) is housed in Memorial Coliseum. The 20,000 square foot state-of-the-art CATS facility opened in March 1998. The CATS Center contains 25 tutoring rooms, 35 Dell computers in the Carol Martin Gatton Computer Center, the Jerry D. Claiborne Study Center, the Career and Life Skills Resource Room, along with administrative offices.

Cliff Hagan Stadium

Cliff Hagan Stadium at Shively Field has been the home of the UK baseball team since opening in 1969. In 2001, the stadium underwent a \$3.4 million dollar renovation which included the addition of a state-of-the-art press box and two luxury boxes. After the renovation the seating capacity of Cliff Hagan Stadium increased to 2,000.

Commonwealth Stadium

Commonwealth Stadium was officially opened in 1973 and expanded in 1999. These major renovations included the addition of 40 luxury box suites (10 in

each corner of the stadium), two state-of-the-art Diamond Vision Video Display Boards and the addition of approximately 10,000 seats. Capacity of Commonwealth Stadium is approximately 68,000.



Hilary J. Boone Tennis Center

The Hilary J. Boone Tennis Center is the home of UK's men's and women's tennis teams. The original Boone Indoor Center, which opened in January 1986, is equipped with four courts and has seating for 1,000 people. In 1997, expansion was completed on the \$1.5 million Hilary J. Boone Varsity Tennis Center. The facility features a 1,500-

seat stadium for its two center courts with additional four hard courts.

Lancaster Aquatic Center

The University of Kentucky's Lancaster Aquatic Center, home of the men's and women's swimming and diving teams, opened in 1989. Racing lanes in the pool can be set up in five configurations: across-the-pool racing at 25 yards, 25 meters, 50 yards and 50 meters. Eighteen swimming lanes are

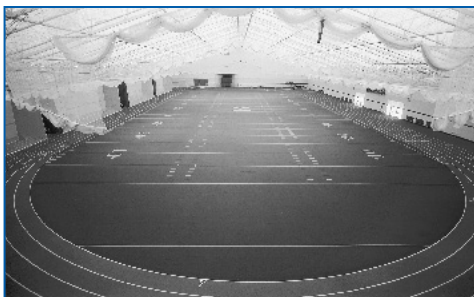
available while diving events are in progress. The center is also equipped with a Daktronic automatic timing scoreboard and a weight room equipped with Cybex weight training machines.

Memorial Coliseum

Memorial Coliseum serves as the competition home of the women's basketball, volleyball and gymnastics teams. Completed in 1950, the Coliseum serves as a memorial to more than 10,000 Kentuckians killed in World War II and the Korean conflict. In 1990, a \$1 million renovation project added a state-of-the-art weight training and conditioning facility, new basketball and administrative offices. As a result, the seating capacity was reduced from 11,500 to 8,700.

Nutter Field House

Serving as the indoor training facility since 1993, the Nutter Field House covers more than 132,000 square feet and is located adjacent to the south end zone of Commonwealth Stadium. The indoor facility features a full-size football field surrounded by a six-lane, 290-meter track. A 9,000-square foot gymnastics room is located in the front of the building and serves as the UK GymCats' training home.



Nutter Training Facility

The Nutter Training Facility, the training center for the UK football team, opened in 1987. The Nutter Center, which encompasses over 48,000 square feet, includes

locker rooms, 11 meeting rooms, a state-of-the-art video and editing room for coaches' film, equipment and training rooms, staff and player lounges, a 60-yard sprint track, sauna and jacuzzi, an aerobics room, and three racquetball courts. In 2002, the facility was expanded to include offices for the football coaching staff.

Rupp Arena

Rupp Arena has served as the home court of the University of Kentucky Men's Basketball team since 1976. The area is divided into two seating areas. The lower level features 10,000 fully cushioned, theater seats, while the upper level has 13,000 seats on epoxy-coated metal bleachers. In 1985, Rupp Arena hosted the NCAA Final Four and in 1986 hosted the Women's Final Four. Rupp has also hosted the Southeastern Conference Tournament and numerous NCAA Tournament Regionals.

Shively Track

The University of Kentucky Shively Track has been a fixture of UK Athletics

since 1959. The facility consists of a 400 meter, all-weather polyurethane track, with a dual set of runways for jumping and four separate throwing areas. The track is equipped with a state-of-the-art Finish Lynx meet management system and seating for 3,000 spectators.

UK Soccer Complex

The UK Soccer Complex was dedicated in 1996 and serves as the home of the men's and women's soccer teams. The complex provides seating for up to 1,500 spectators. The bermuda grass soccer field is regulation size, has an underground irrigation system that allows for drainage of rainwater and a sprinkler system.

UK Softball Stadium

The UK Softball Stadium has seating for approximately 500 spectators and lights for night games. The playing surface is Bermuda grass and has an underground irrigation system for quick drainage. The stadium is equipped with a press box that sits atop the bleachers. The press box, which seats 10, includes space for scoreboard operation and comfortable seating for media.

UK Basketball Practice Facility

The Joe Craft Center, the \$30 million state-of-the-art basketball practice facility, opened in January 2007. The facility houses the men's and women's basketball teams plus many administrative and UK athletics staff offices. In the lower level, the men's and women's basketball teams each get their own practice court, locker room, video room and lounge. There is also a spacious weight room and training room utilized by both programs. The main level features the men's and women's basketball offices, the K Fund department and the ticket offices. On the upper level, you can find the athletics director's office, compliance, media relations, marketing, publications and business office.



University of Kentucky



IMPORTANT THINGS TO KNOW

As a student-athlete, there are many basic guidelines you need to be aware of. CATS suggest that each student-athlete familiarize themselves with the basic rules and regulations that govern the University of Kentucky.

Important Things to Know

Introduction

Once accepted as a student of the University of Kentucky, you will have a computing account automatically created for you. You will use this account to register for classes, pay your bill online, access your email account, login to computers in Student Computing Labs, and access other computer services at the University. This section details the steps necessary to activate your computing account.

Creating your New Exchange E-mail Account

If you plan on using an Exchange email account as your primary email account, follow the instructions below to create an UEA for that account. Before creating your University Email Address, you will need to have a UK account. If you do not already know your UK user ID and password, please contact IT CSC by phone (859-257-1300) or email (helpdesk@uky.edu)

1. Go to the UK Account Manager (<https://ukam.uky.edu/manager/>). Using your user ID and password, login to the UK Account Manager.
2. You will be instructed to change your password. Type in your old password in the Old Password field. Then create a new password, and type that into the New Password and Verify New Password fields. All three fields should be filled. Your new password should meet the following criteria:
 - * Must be at least eight (8) characters long.
 - * Must use at least one character from the following categories:
 - Alphabetic characters ("A" through "Z" and "a" through "z")
 - Numbers ("0" through "9")
 - Special Non-Alphanumeric Characters ("!", "@", "#", "\$")
 - * Cannot be a word listed in a dictionary.
 - * Cannot be the same as your User ID, or the reverse of your User ID.
 - * Cannot be the same as your University Email Address, or the reverse of your University Email Address.
 - * Cannot be the same as your current password.Click on the Continue button to proceed.

3. The UK Account Manager will report your password has been

changed. Click on the Proceed button to continue.

4. You will now enter a 4-step process to activate your UK Account. One step allows you to create your UEA. The recommended UEA should be in the format of `firstname.lastname@uky.edu`. You may change this recommended UEA to an identifier you prefer. Your UEA should meet the following criteria:
 - * Must be your name or a derivative of your name.
 - * Must be at least three (3) characters long.
 - * Must consist of only alphanumeric characters, periods (.) and dashes (-).
 - * Cannot have two consecutive non-alphanumeric characters (e.g. "joe..smith").
 - * Cannot start and/or end with non-alphanumeric characters (e.g. "-joe.smith").

Enter your desired UEA address name into the field and click on the Continue button.

5. One step will prompt you for a forwarding address. Since you will be using your local mailbox you do not wish to enable this option.
6. Another step will assist you in setting up password self-reset for your account. This feature will allow you to create a new password when you have forgotten your old password. Read and follow the on-screen instructions carefully. You may be asked for your current password, which is the new password you created. Once you have entered your password self-reset questions and answers, click on the Continue button.

For more information about the password self-reset feature, please see the About Password Self-Reset document (<http://www.uky.edu/IT/CustomerService/Accounts/pwd=self-reset.html>).

7. The UK Account Manager will report that your password self-reset credentials have been successfully stored. Click on the Proceed button to continue.
8. The last step will allow you to review and update your information. Review the information to ensure it is correct, and then click on the Finish button.
9. Your settings will be changed, and you will be automatically logged out of the UK Account Manager. Your UEA will be the email address you specified in step one (example: `joe.smith@uky.edu`). You will now receive email sent to your University Email Address at your Exchange

mailbox.

10. If you cannot remember your password or have other difficulties creating your UEA, please contact the IT Customer Service Center by phone (257-1300) or email (helpdesk@uky.edu).

Working with the Media

University of Kentucky athletes and athletics events are highly visible and often draw heavy media coverage. Dealing with media representatives is, therefore, an important part of your responsibility as a University of Kentucky student-athlete.

Interview guidelines

- All interviews must be arranged through the Media Relations office. If you are approached by a media representative about doing an interview, please refer them to UK Media Relations, 2nd floor Joe Craft Center.
- Interview policies are set by your coach, in conjunction with the SID office. Please familiarize yourself with the specific policies of your team, such as interview times, locations, etc.
- All University of Kentucky locker rooms are closed to the media during regular-season events. All players requested for media interviews will be brought to a designated location for that sport (i.e., a media interview room, press box, etc.).
- It is imperative that you meet your interview agreements. Meet or call the media representative promptly at the arranged time. If circumstances arise that might prevent an interview, immediately contact the Media Relations office at 257-3838.
- Be polite when talking to a reporter. Speak clearly and concisely. Remember that you are representing the University of Kentucky by all your words and actions.
- Your appearance is an important part of a television interview. Dress neatly. Make eye contact. Smile.
- NEVER criticize your coach, your team's game play or strategy, your teammates, the officials or your opponents.
- Remember that nothing is confidential.

WildCard Student ID cards

Your WildCard is \$15 and is issued for your convenience during your tenure at the University of Kentucky. Payment may be made with cash, check, Plus Account, Visa or MasterCard. Replacement cards are \$20.

The WildCard is the property of the University of Kentucky and is nontransferable. The card must be presented or surrendered upon request of authorized officials of the University. Any expenditure associated with the use of the card is the responsibility of the holder until it is reported lost/stolen.

Immediately report you card lost or stolen at www.uky.edu/Plus Account, the WildCard UKID Center (859-257-1378), the Dining & Plus Account Office (859-257-6159), or any Dining Services location.

Your WildCard is also your key to the following services upon validation:

- **Academics**
Use for class attendance verification and test taking identification.
- **Athletics**
Use your WildCard to pick up student and visitor tickets for football and basketball games at Memorial Coliseum. Your valid WildCard must be shown for entry into athletic events.
- **Library Copier Services**
Use your WildCard to open or add money to your account for microform printing and to make copies in all designated copiers across campus . The Young Library uses the Plus-Account for all copiers and microforms.
- **Library**
Stop at a circulation desk at any campus library to activate the library barcode number and you can use your WildCard to check out books and materials. Please Note: Students must have their WildCard Student ID card to enter the William T. Young Library between 10pm and 6am.
- **Residence Halls**
The Wildcard is your “key” if you live in a residence hall with key card access.
- **Student Center Ticket Office**
Verify full-time student status for discounts on tickets to up coming University event such as concerts, performing arts, and special events.
- **Johnson Center & Aquatic Center**
You must have your WildCard for Access to the Johnson Center, the Lancaster Aquatic Center, and to check out equipment.

- Student Employment Services (STEPS)
The WildCard is used as verification of student status and may be used as identification (in addition to social security card, birth certificate, or passport) for completion of an 1-9 form at the employment office.
- Student Health
Present your WildCard at Student Health Services (available to students who have paid the health fee). Some prescriptions are available at a lower rate at the UK Pharmacy with your WildCard
- UK Federal Credit Union
Use your WildCard to open an account.

Your Plus Account

The Plus Account is an optional account that is extremely versatile and widely used on and off campus for dining, laundry, bookstores, printing, copying and more! It requires no minimum deposit and may be opened or added to in any whole dollar amount at the following location: [The Dining & Plus Account Office](#) in 101 Student Center: Student Billing Services in 18 Funkhouser Building; or DART machines in campus computing labs, and [on-line](#). Deposits may be made at anytime during the semester. All Plus Account monies may be carried forward or are refundable less a \$5 handling fee. For a Complete list of locations where the Plus Account may be used, you can find us on the web at www.uky.edu/PlusAccount.

Student Athlete Tickets

The K-Club, or Varsity Letter-winner's Club, is open to all student-athletes who have earned a letter in a varsity sport at UK. The K-Club, being a student organized group, has group seating at both football and men's basketball games. The representative of each sport collects the money and turns it into the ticket office on the Friday prior to each scheduled football distribution date or men's basketball lottery. The representative is then responsible for picking up the tickets from the ticket office the following Monday to distribute to the athletes. Ticket limits may be imposed based on availability.

Residence Life

Residents must conduct themselves so that their actions do not interfere with the ability of other residents to sleep, study, or enjoy their environment. All residence hall regulations affirm that people must be treated with respect and that property must be used appropriately.

Residence hall staff is responsible for enforcing the rules and policies set out in this document. Staff members are not authorized to grant exceptions to regulations. If a student is believed to have violated a University regulation or a residence hall policy, a residence hall staff

member will document the incident by writing an incident report and refer to the appropriate individual or office for follow-up.

Follow-up on an incident report generally requires the student to meet with the Hall Director or the Dean of Students. If a student is found to be in violation of University policy, a sanction will be issued. Possible sanctions include verbal warning, written warning, restriction of guest privileges, restitution, community service, participation in educational programs and transfer to another residence hall. In cases where the violation is very serious or in cases of multiple violations, the Dean of Students may consider termination of the Housing contract at the student's expense.

In all cases where a sanction is issued, the student has the right to appeal the decision to the next level.

Residents of the University Residence Halls should familiarize themselves with the rules and regulations as given in this document, the rental agreement, and the University Code of Student Conduct as stated in Student Rights and Responsibilities.

Rules of Conduct

Category A:

Commission of acts described under Category A, or attempts to complete the same, will result in immediate referral to the office of the Assistant Director for Student Rights and Responsibilities for review. Based on the nature and circumstances of the act(s), the matter will be investigated and adjudicated by the appropriate hearing officer for the individual who is alleged to have engaged in the misconduct. Depending on the seriousness of the behavior, some cases may be referred to the Dean of Students for adjudication.

1. Use, possession, or distribution of controlled substances and/or drug-related paraphernalia, except as expressly permitted by law. Possession includes the presence of such controlled substances or paraphernalia in one's residence hall room.
2. Defacing, disfiguring, damaging, or destroying property belonging to the University or a member of the University community.
3. Theft or unauthorized possession of property belonging to the University or to a member of the University community.
4. The threat of, or commission of, physical violence against any person.
5. Verbal, written, or physical harassment or intimidation of any person by any means. This includes verbal abuse, harassment, or intimidation of or interference with a Residence Life staff member or other University employee who is acting in the

performance of his or her duties.

6. Possession or use of deadly weapons or ammunition. This includes but is not limited to, firearms, rifles, BB guns, or any knife other than an ordinary pocketknife or hunting knife.
7. Possession or use of explosive materials, including, but not limited to, flammable liquids and fireworks.
8. Tampering with, interfering with or disrupting the operation of misusing, theft, or unauthorized possession of, or vandalism of fire fighting and safety equipment, including, but not limited to, fire extinguishers, pull stations, fire hoses, smoke detection, or alarm equipment, security cameras, electronic door access systems and exit signs, or violation of the University fire safety regulations.
9. Failure to evacuate a building when a fire alarm begins to sound.
10. The intentional commission of any act in a facility supervised by the Office of Residence Life, which poses a threat to the health and/or safety of oneself or others. This includes, but is not limited to, engaging in suicidal gestures or attempts, or throwing objects out of any window, or propping open doors to the residence halls or any other action that allows individuals who are not your guests to enter the building.
11. Violation of local, state, or federal law at a facility supervised by the Office of Residence Life.
12. Repeated Violation of Category B rules of conduct.
13. Entry into a residence hall room without the express permission of the occupants.

Category B:

Commission of acts described under Category B, or attempts to complete the same, will be investigated and adjudicated by the Hall Director or Assistant Hall Director of the individual who is alleged to have engaged in the misconduct. However, due to the nature and seriousness of the acts, the Hall Director may refer the matter to the Dean of Students office for investigation and adjudication.

1. Violation of the University alcohol policy by possession and/or consumption of alcoholic beverages, or exhibiting drunken behavior.
2. Presence in a room or apartment where alcohol is being consumed or is in plain view.
3. Possession of alcoholic beverage containers, even those being kept as a souvenir or as part of a decorative collection, is not permitted. Alcoholic beverage containers include, but are not limited to, beer cans and bottles, kegs, bongos, and wine bottles. Possession includes the presence of such items in one's room or

- apartment.
4. Dishonest conduct including, but not limited to, falsely accusing another of misconduct or knowingly providing false information to a Residence Life staff member or other University Official.
 5. Violation of the Quiet and Courtesy Hours Policy.
 6. Violation of the Visitation Policy or residence hall sign-in/sign out procedures.
 7. Violation of the Cohabitation Policy.
 8. Allowing another resident or guest to violate University Policy in the room or apartment to which one is assigned.
 9. Individual or group activities that result in disturbance or distress to others.
 10. Using, or attempting to use, University property in a manner inconsistent with its designated purpose. This includes but is not limited to, removing furniture from a residence hall lounge, misusing emergency keys, misusing emergency exits, misusing recycling bins, or opening windows on south campus.
 11. Any form of unauthorized solicitation or door-to-door distribution of materials, including surveys and questionnaires.
 12. Indecent or obscene behavior or the distribution of obscene material (for definition, please refer to the Student Rights and Responsibilities handbook.)
 13. Gambling
 14. Creating or allowing unsanitary or harmful living conditions.
 15. Failure to comply with the directions or requests of a Residence Life Staff member (i.e. Hall Director, Assistant Hall Director, Resident Advisor, professional staff member, Office Assistants, or other desk worker) law enforcement officer, or other university official acting in the performance of his or her duties. This includes, but is not limited to, failure to identify oneself when requested to do so, and failure to comply with the terms of a disciplinary sanction.
 16. Failure to abide by any other residence hall policies that are contained in any official publication or administrative announcement of the University of Kentucky (i.e., the Official Guide to Living on Campus, the Rules of Conduct brochure, the Housing Contract, etc.)

Category C:

Commission of acts described under Category C will be investigated by the Office of the Dean of Students.

1. Unauthorized acquisition, sale, alteration, use or other misrepresentation of the Food Service Meal Card for the Purpose of acquiring Meals, services or refunds from the University of Kentucky.
2. Violation of the University Code of Student Conduct.

Student Parking and Campus Bus Service

Students can access information on topics related to parking, permit application, motorist assistance, bicycle parking, bus schedules, and review our FAQ's on the World Wide Web at www.uky.edu/Parking. Students can also subscribe to Parking E-News on this website to receive up-to-date parking and transportation news and information via e-mail. For questions or for information not found on the website, call Parking Services at (859) 257-5757 or (800) 441-0555, or Transportation Services at (859) 257-7202.

Parking

When parking on campus, students should purchase and properly display a University of Kentucky parking permit. Application information may be found online at www.uky.edu/Parking. The temporary convenience of illegal parking is rarely worth the hassle and expense of paying fines and/or vehicle impoundment. All R and C student lots require a valid permit by the Monday before classes begin on Wednesday. Bus service is provided for the K lots to Central Campus. Permit control signs at the entrance to each parking lot display the hours when the lot is controlled for permits. Reserved spaces within these lots are controlled for valid permits during the hours indicated on the signs. Reserved parking includes spaces reserved for residence hall directors and people with disabilities.

Renewing Permits

Students holding permits from the 2009-10 academic year and who qualify for the same category of permit, may renew permits May 1 through May 31. Other eligible students may apply for permits for the 2010-11 academic year from June 1 through July 31, or until the supply of permits is exhausted. Any student who cannot obtain a C or R permit may obtain a K permit valid at Commonwealth Stadium. Freshmen and sophomores who commute are only eligible for K permits, while those who live on campus may apply for a K permit if the desired R permit is sold out. After August 1, applications for K-permits will be accepted only online or via mail, until September 30, 2010. Permits purchased after October 1, 2010 must be purchased at Parking Services.

Parking for Students with Disabilities

Parking privileges will be granted to qualified students upon completion, acceptance, and approval of an application. The Disability Resource Center, Room 2, Alumni Gym, (859) 257-2754, will assist students with the application process. Office Hours are 8:00 a.m. to 5:00 p.m., Monday through Friday.

Guest Parking

Family and friends visiting campus during the work week may pay to park

in Parking Structure #7 (near Kirwan-Blanding), in Parking Structure #5 (next to Kennedy Book Store), or at pay parking meters. Guests may also stop by Parking Services, located in Parking Structure #6 (721 Press Avenue), at the corner of Press and Virginia Avenues to obtain a temporary parking pass. After hours and on weekends, visitors can park in lots not controlled for permits. A permit control sign at the entrance to each parking lot displays the hours when the lot is being controlled for permits.

Short-term Parking

Parking meters are available to allow temporary parking for visitors, employees and students. Parking meters are located near the UK Bookstore, Funkhouser Building, Seaton Center and behind Memorial Coliseum. UK parking meters have time limits of either 45 minutes or three hours displayed on the meter post and on the tag inside the meter. The intent of 45-minute meters is to provide short-term parking; they are not intended for students attending class. In addition, certain meters are reserved for specific uses. These meters are identified by signs attached to the meter posts or posted at the entrance to the parking lot.

Avoiding Parking Citations and Keeping Vehicles Safe

1. Be sure to read and understand the information provided with the permit;
2. Do not park in the fire lanes (red curbs), service areas (yellow and white stripes), loading zones (black and yellow stripes) or reserved spaces;
3. Do not share the permit with anyone else;
4. Report lost or stolen permits promptly to Parking & Transportation Services;
5. Do not assume that because other cars are parked illegally you may do so;
6. Do not park in violation (e.g., yellow lines and fire lanes) with hazard lights flashing;
7. Do not leave notes in vehicles for parking control officers;
8. Keep vehicles locked at all times.

Campus Bus Service

Students do not pay a fare when riding the LexTran campus buses and the Campus Area Transit System (CATS) shuttle buses (A fare is associated with LexTran service off campus). Support for these bus services comes from parking permit fees. LexTran and CATS buses are all equipped with a wheelchair lift. All commuter students and students living on campus may ride the LexTran campus buses to and from central campus, residence halls, and Commonwealth Stadium between 7:00 a.m. and 6:15 p.m., Monday

through Friday, during the fall and spring semesters. LexTran bus service begins on Wednesday at the start of classes in August and January and operates on weekdays when UK is in official session. The LexTran campus buses make approximately 120 trips each day to and from Commonwealth Stadium and central campus. LexTran buses run about five minutes apart during peak hours for classes and about ten minutes apart during off-peak hours.

The University supplements the bus service by providing additional daytime and night shuttle buses to areas of campus not served by LexTran. The daytime CATS service operates three bus routes on Monday through Friday when UK is in official session. One CATS bus runs on a limited route when class is not in session but the University is open. The night service operates on a fixed route on Monday through Thursday between 4:30 p.m. and 11:00 p.m. during fall and spring semesters. In addition, the night service cooperates on demand for students who need transportation around campus, such as between Commonwealth Stadium and the residence halls. Students may telephone the driver directly at 221-RIDE (7433) to make pick-up requests. The bus driver will make every effort to accommodate reasonable requests. Calls must be received at least 30 minutes prior to the end of on-demand service. The schedule for on-demand service is as follows:



Sunday	7:00 p.m. – 11:30 p.m.
Monday-Thursday	11:00 p.m. - 5:00 a.m.

Due to the high volume of riders on the weekends, Parking and Transportation Services has established an After Hours Route to serve the campus community on Friday and Saturday nights. The fixed 30-minute loop will run between 7:00 p.m. and 3:00 a.m. during fall and spring semesters.

In addition to the web site, you will find route and schedule information displayed at the major bus stops, or by visiting Parking Structure #5, located next to Kennedy Book Store, or Parking Services, located at 721 Press Avenue (at the corner of Press and Virginia Avenues).

Lexington Bus Service

Students who live off-campus may find that riding a LexTran city bus to and from campus is more convenient and less expensive than parking on campus.

LexTran offers the Class Pass, a student pass providing unlimited LexTran rides throughout the city. Class Passes are \$75 for the school year or \$50 per semester (prices subject to change). For the convenience of students, Class Passes are available for sale at each of the PTS offices. For more information on the Class Pass, LexTran routes and schedules, visit LexTran's website at www.lextranonthemove.org or call (859) 255-7756.



WHO CAN HELP ME



Phone Directory

Campus Offices

Academic Ombudsman	257-3737
Counseling & Testing Center	257-8701
Dean of Students	257-3754
Health Services	323-2278
Registrar's Office	257-3161
Residence Life	257-4784
Student Center	257-6627
Student Financial Aid	257-3172
Stuckert Career Center	257-2746

Colleges

Agriculture	257-4772
Arts & Sciences	257-8712
Business & Economics	257-8936
Communications & Information Studies	257-7805
Dentistry	323-5656
College of Design	257-7617
Education	257-6076
Engineering	257-1687
Fine Arts	257-1707
Graduate School	257-4613
Health Sciences	323-1058
Law	257-1678
Medicine	323-5000
Nursing	323-5108
Pharmacy	323-7601
Public Health	257-5678
Social Work	257-6650
University Extension	257-9000

Frequently Called Numbers

Accounting/Scholarship Check Information.....	257-6501
Athletic Director.....	257-8015
Center for Academic and Tutorial Services (CATS)	257-1897
Compliance Office.....	257-8604
Faculty Representative.....	218-6515
Marketing and Promotions.....	257-8022
Nutter Fieldhouse.....	257-7122
Nutter Training Room	257-6521
Nutter Weight Room	257-2672
Parking & Transportation.....	257-5757
Shively Weight Room.....	257-4229
Athletic Media Relations.....	257-3838
UK Ticket Office	257-1818

COACHES' DIRECTORY

Head Coaches

Baseball

Gary Henderson257-8052
Commonwealth Stadium

Men's Basketball

John Calipari.....257-1916
Joe Craft Center

Women's Basketball

Matthew Mitchell..... 257-6046
Joe Craft Center

Diving

Ted Hautau..... 257-7944
105 Lancaster Aquatic Center

Football

Joker Phillips.....257-6509
Commonwealth Stadium

Men's Golf

Brian Craig..... 257-6506
Commonwealth Stadium

Women's Golf

Golda Johansson Borst....257-4861
Memorial Coliseum

Gymnastics

Hajile "Mo" Mitchell..... 257-5185
Memorial Coliseum

Rifle

Harry Mullins.....257-1281
Memorial Coliseum

Men's Soccer

Ian Collins.....257-4059
Shively Sports Center

Women's Soccer

Jon Lipsitz.....257-4971
Shively Sports Center

Softball

Rachel Lawson.....257-9037
Commonwealth Stadium

Swimming

Gary Conelly.....257-7944
105 Lancaster Aquatic Center

Men's Tennis

Dennis Emery.....257-2777
Hilary Boone Tennis Center

Women's Tennis

Carlos Drada.....257-2777
Memorial Coliseum

Track & Field

Don Weber.....257-3002
Memorial Coliseum

Volleyball

Craig Skinner.....257-2532
Memorial Coliseum

University of Kentucky Athletic Administration

Athletics Director 257-8015
Mitch Barnhart

Senior Associate Director of Athletics/Student Services257-8604
Sandy Bell

Senior Associate Director of Athletics/External Affairs 257-7768
Mark Coyle

Associate Director of Athletics/Student Services 257-8799
Bob Bradley

Associate Director of Athletics/Administration 257-5572
John Cropp

Associate Director of Athletics/Facilities & Operations 257-1243
Russ Pear

Associate Director of Athletics/Finance
Senior Women's Administrator 257-8607
Lisa Peterson

Associate Director of Athletics/Media Relations 257-3838
DeWayne Peevy

Director of Special Events..... 257-2589
Leslie Bray

Assistant Director of Athletics/Compliance..... 257-9784
John Butler

Assistant Director of Athletics/Development257-1019
Candice Chaffin

Assistant Director of Athletics/Women's
Basketball Operations..... 257-6046
Pam Stackhouse

Assistant Director of Athletics/Marketing 257-1830
Jason Schlafer

Assistant Director of Athletics/Ticket Operations 257-8615
Joe Sharpe

Assistant Director of Athletics/Event Management 257-4995
Rodney Stiles

Faculty Athletic Representative.....218-6515
Joseph Fink

Athletic Department Offices

Administration	257-8000
Business Office.....	257-9827
Center for Academic and Tutorial Services (CATS).....	257-1897
Compliance Office	257-8604
Computer Services	257-2293
Event Management	257-4995
Nutter Fieldhouse	257-7122
Football Equipment Room	257-6522
K-Fund.....	257-6300
Marketing and Promotions	257-8022
Athletic Media Relations	257-3838
Nutter Weight Room	257-2672
Nutter Training Center	257-6521
Payroll and Personnel	257-6501
Shively Weight Room	257-4229
Sports Video	257-9863
Ticket Office	257-1818

Guide to University Offices

WHAT	WHO TO SEE	WHERE	PHONE
Absences			
Reporting prior to	Instructor		
Reporting following	Instructor		
Due to illness	Instructor		
Emergency notification	Academic Ombud	513 P.O.T.	257-3737
Academic Advisement			
For appointment	CATS Advisor College Advisor	Memorial Col.	257-1897
Undecided Major			
Undergrad Studies	CATS Advisor Academic Advising Serv.	Memorial Col.	257-1897
Pre-professional	Miller Hall	257 P.O.T.	257-3383
Academic Procedures			
Course selection	CATS Advisor	Memorial Col.	257-1897
Grievance	Academic Ombud	109 Bradley Hall	257-3737
Withdrawals from Univ.	CATS Advisor	Memorial Col.	257-1897
Withdrawals from courses	CATS Advisor	Memorial Col.	257-1897
Course Grades	WebUK		
Major, selection of	CATS Advisor	Memorial Col.	257-1897
Major, change of	CATS Advisor	Memorial Col.	257-1897
Reinstatement information	College Dean's Office		
Transfer	CATS Advisor	Memorial Col.	257-1897
Transient	CATS Advisor	Memorial Col.	257-1897
Tutoring	CATS Advisor	Memorial Col.	257-1897
Accident			
Auto (on campus)	Univ. Police	305 Euclid Ave.	257-1616
Auto (off campus)	Metro Police	134 E. Main Street	911
Injury	Head Trainer	Nutter Training	257-6521
	Health Service	B133 Medical Pl.	323-6366
	Medical Center	Emergency Rm.	323-5901
Emergency (on campus)	Univ. Police	305 Euclid Ave.	911
(off campus)	Metro Police	134 E. Main St.	911
Accounts			
	Student Billing Service	257 Student Ctr.	257-3406
	Athletics/Accounting	Memorial Col.	257-9827

WHAT	WHO TO SEE	WHERE	PHONE
Activities, Student			
Programming bodies	Student Activities board	204 Student Ctr.	257-8867
	Student Government	120 Student Ctr.	257-3191
Activities Available	Student Org. Office	106 Student Ctr.	257-1099
Admissions			
Undergraduate	CATS Advisor	Memorial Col.	257-1897
	Office of Admissions	100 Funkhouser	257-2000
Graduate	Graduate School	304 P.O.T.	257-4613
Counseling			
Academic	CATS Advisor	Memorial Col.	257-1897
	College Advisor		
Activities	Director of Student Ctr.	209 Student Ctr.	257-8867
	Dean of Students Office	513 P.O.T.	257-3754
Career	CATS Life Skills Coord.	Memorial Col.	257-6944
Financial	Director of Financial Aid	121 Funkhouser	257-3173
Health	Head Trainer	Nutter Training	257-6521
Personal	Head Trainer	Nutter Training	257-6521
	Counseling/Testing Center	513 P.O.T.	257-8701
Vocational	CATS Advisor	Memorial Col.	257-1897
Courses			
(see academic procedures)			
Degree			
Application	College Dean's Office		
Requirements	APEX on web		
Drug Information			
	Head Trainer	Nutter Training	257-6521
	Drug Information Ctr.	C113 Medical Ctr.	323-5320
	Student Health Service	B142 Medical Pla.	323-5511
	University Health Service	B-163 Ky. Clinic	323-5823
Emergency treatment	Emergency Room	Univ. Hospital	323-5901
Employment			
Career Placement	CATS Advisor	Memorial Col.	257-1897
	Stuckert Career Center	408 Rose St.	257-2746
Student (part-time)	Student Employment	252 Maxwell St.	257-3841

WHAT	WHO TO SEE	WHERE	PHONE
Fee Payment	Student Billing Services	257 Student Ctr.	257-3406
Financial Aid			
Financial Aid Info	Student Financial Aid	100 Funkhouser	257-3172
Pell Grant	Compliance	Memorial Col.	257-8604
NCAA special assistance	Compliance	Memorial Col.	257-8604
General Information and Assistance			
	CATS Advisor	Memorial Col.	257-1897
	Dean of Students Office	513 P.O.T.	257-3754
Graduate Work	CATS Advisor	Memorial Col.	257-1897
	CATS Lifeskills Coord.	Memorial Col.	257-2762
Graduation Requirements	APEX	http://www.uky.edu/degreeaudit	
	CATS Center Advisor	Memorial Col.	257-1897
	College Advisor		
Health Fee			
Payment	Student Billing Service	18 Funkhouser	257-3406
Information	Student Health Service	B167 Medical Pl.	323-6356
	Head Trainer	Nutter Training	257-6521
Identification Cards	Commuter Student Office	107 Student Ctr.	257-1378
Insurance			
Student Health	Head Trainer	Nutter Center	257-6521
	Student Insurance Officer	B170 Medical Pl.	323-6356
Library Services	Director	127 King Library	257-8812
Loans	Student Financial Aid	127 Funkhouser	257-1866
Lost & Found	Univ. Police	305 Euclid	257-1616

WHAT	WHO TO SEE	WHERE	PHONE
Meal Tickets			
	Head Coach		
	Housing Office	25 Funkhouser	257-1866
Medical Services			
Illnesses or accidents	Head Trainer	Nutter Training Ctr.	257-6521
	Health Service	B133 Medical Pl.	323-6143
Hospitalization	Health Service	B133 Medical Pl.	323-6356
Drug Information	Health Service	B142 Medical Pl.	323-5511
Personal Counseling	Mental Health Service	B142 Medical Pl.	323-5511
Contraception Service	Health Service	B178 Medical Pl.	323-4636
Multicultural & Academic Affairs			
Associate Provost		563 P.O.T.	257-1991
Student Affairs	Minority Stu. Affairs	555 P.O.T.	257-5641
Scholarships	Student Fiscal Affairs	221 Funkhouser Bldg.	323-6334
Learning Services	Learning Services Center	660 S. Limestone	323-6347
Police			
On campus			
Accidents	University Police	Parking Structure	257-1616
Regulations	Parking	Parking Structure	257-5757
Violations	Parking	Parking Structure	257-4998
Parking Permits	Parking	Parking Structure	257-5757
Emergency			333
Off campus	Metro Police	134 E. Main Street	911
Postal Service			
	Univ. Post Office	Basement, Classroom Bldg.	257-6358
Publications			
Kernel	Kernel Office	Journalism Bldg.	257-1915
Kentuckian	Kentuckian Office	Journalism Bldg.	257-4005
Religion			
Religious Advisory Staff	Disability Resource Center	Rm. 2, Alumni Gym.	257-2754
Scholarships			
	Head Coach		
	Financial Aid Office	127 Funkhouser	257-3172

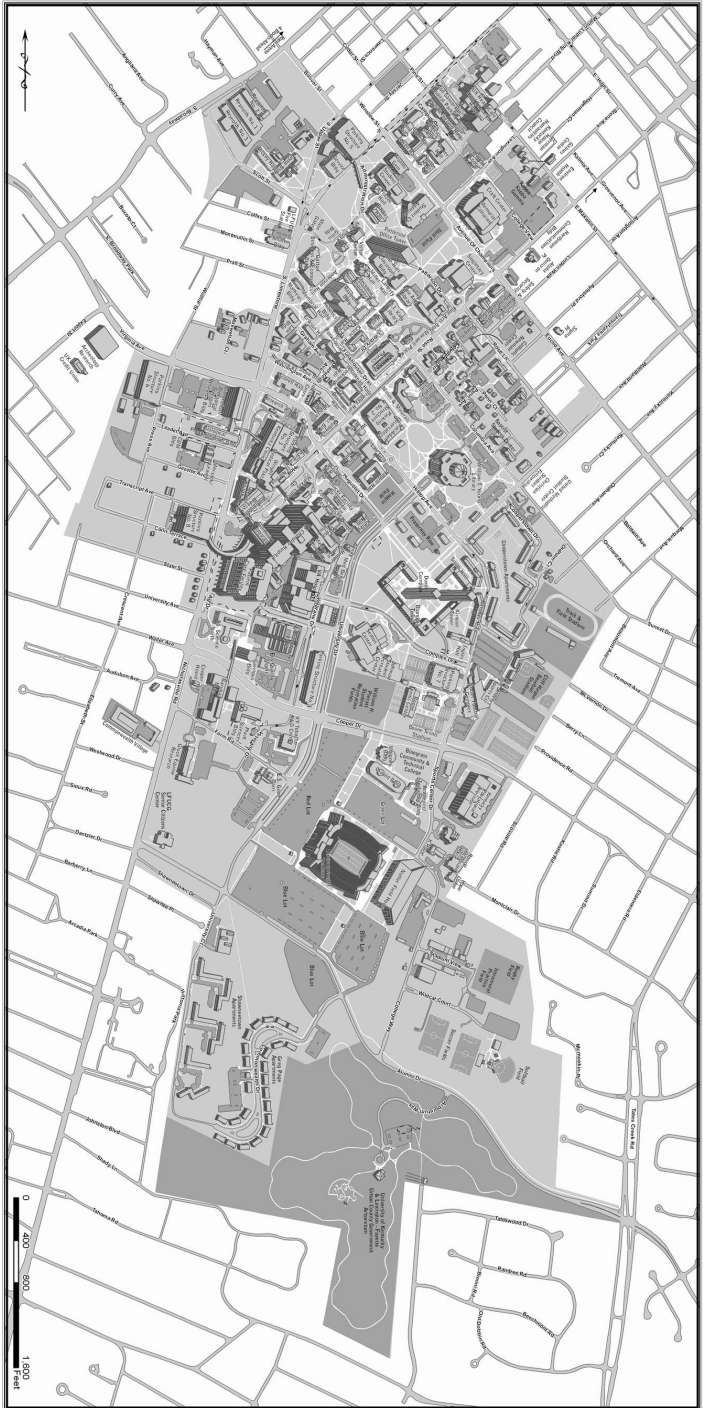
WHAT	WHO TO SEE	WHERE	PHONE
Testing			
Aptitude	Counseling & Testing Ctr.	301 Frazee Hall	272-8701
Personality	Counseling & Testing Ctr.	301 Frazee Hall	272-8701
Vocational	Counseling & Testing Ctr.	301 Frazee Hall	272-8701
Univ. Testing Program	Counseling & Testing Ctr.	301 Frazee Hall	272-8703
Transcripts			
Unofficial	Web UK		
Official	Registrar	10 Funkhouser Bldg.	257-3161
Withdrawal from school	CATS Advisor	Memorial Col.	257-1897

Alphabetical List

286	A.S.T.e.C.C. Building	D5	142	Farmhouse Fraternity House	F3	285	Nutter Field House	I3
481	Academic Technical Building (LCC)	J5	22	Fine Arts Building	D4	277	Nutter Football Training Facility	H2
32	Administration Building	C5	31	Frazee Hall	C5	433	Old Koinowa Bldg	D3
91	Agricultural Science Center North	H5	54	Funkhouser Building	E5	235	Oswald Building (LCC)	J3
66	Agronomy Headhouse & Greenhouses	F5	215	Garrigus Building (Ag. Science South)	I5	197	Parking Structure 1 (University Dr.)	I4
200	Allied Health Building	G6	34	Gasston Business & Economics Building	D6	198	Parking Structure 2 (Rose St.)	E4
69	Alpha Delta Pi Sorority House	D4	294	Gill Heart Institute	G5	199	Parking Structure 3 (Kentucky Clinic)	F5
127	Alpha Gamma Delta Sorority House	D3	33	Gillis Building	C5	201	Parking Structure 4 (Medical Center)	H5
115	Alpha Gamma Rho Fraternity House	F3	99	Gluck Equine Research Center	J5	202	Parking Structure 5 (S. Limestone)	B5
A.	Alpha Omicron Pi Sorority House	C3	97	Good Barn	J5	9	Patterson Hall	B5
112	Alpha Tau Omega Fraternity	F4	154	Greenhouse Complex	H5	27	Patterson Office Tower	C5
129	Alpha Xi Delta Sorority House	D4	243	Greg Page Apartments 1	L4	41	Pence Hall	D5
29	Alumni Gym	B5	42	Grehan Journalism Building	D5	5	Peterson Service Building	B5
46	Anderson Hall Tower	D5	283	Gehan Baseball Stadium	H2	82	Pharmacy Building	F5
347	Appalachian Center -624 Maxwellton Ct.	E6	111	Haggin Hall	F4	139	Phi Kappa Alpha Fraternity House	G3
333	Appalachian Center Annex (641 S. Limestone)	E6	495	Hamilton House	A10	138	Phi Sigma Kappa Fraternity House	G3
B.	Baptist Student Center	E3	305	Hardymon Communications Building	B3	123	Pi Beta Phi Sorority House	E3
28	Barker Hall (Buell Armory)	C5	6	Health Science Research Building	G4	312	Plant Science Building	J5
344	Betts House-Gaines Ctr-232 E. Maxwell	B3	351	Holmes Hall	B5	275	Poundstone Ag Regulatory Services Building	L4
343	Bingham Davis House-Gaines Ctr-218 E. Maxwell	B3	7	Insectary Conservatory	E5	206	Printing Building	B6
509	Biomedical Science Research Building	F6	220	Jessie Harris Building - 644 Maxwellton Ct	E6	512	Professional Development Building	F6
145	Blanding Tower Dorm Complex	G3	7	Jewell Hall	B5	503	Ralph G. Anderson Building	D5
12	Blazer Hall	B4	220	Johnson Student Recreation Center	H4	281	Raymond Building (Civil Engineering)	D5
14	Boone Faculty Center	E4	345	Kade German House- 212 E. Maxwell	B3	3	Research Facility 1	E5
213	Boone Indoor Tennis Center	I3	125	Kappa Alpha Theta Sorority House	E3	216	Research Facility 3	F6
485	Boone Tennis Stadium	I3	128	Kappa Delta Sorority House	D3	101	Reynolds Warehouse 1	C6
59	Bowman Hall	E5	G.	Kappa Kappa Gamma Sorority House	B3	102	Reynolds Warehouse 2	B7
8	Boyd Hall	B5	140	Kappa Sigma Fraternity House	G3	103	Reynolds Warehouse 3	B7
58	Bradley Hall	E5	44	Kastle Hall	D5	210	Reynolds Warehouse 4	C7
56	Breckinridge Hall	E5	11	Keeneland Hall	A4	400	Richards House (630 Maxwellton Ct.)	B6
C.	Catholic Newman Center	D3	75	Kelly Building (Med. Ctr. PPD)	G4	93	Roach Patient Care Bldg. (Markey Cancer Ctr.)	G5
276	Charles E. Barnhart Building (Ag. Engineering)	I5	284	Kentucky Clinic	F5	108	Robotics Facility (CRMS)	D5
55	Chemistry-Physics Building	D4	315	Kentucky Humanities Council - 206 E. Maxwell	A3	240	Rose Lane Apartments - 468	E2
67	Chi Omega Sorority House	D4	H.	KET - The Kentucky Network	J2	23	Safety & Security	C3
D.	Christian Student Fellowship	F2	119	King Alumni House	C3	K.	Samaritan Hospital	A4
336	Clark Building - University Press - 663 S. Lime	E6	39	King Library	D4	230	Sanders-Brown Research Center	G6
96	Combs Cancer Research Building	F5	57	Kinthead Hall	E5	2	Scott Street Building	C6
432	Commonwealth House-Gaines Ctr 226 E. Maxwell	B3	149	Kirwan Tower Dorm Complex	G3	64	Scovell Hall	E5
222	Commonwealth Stadium	K3	71	K-Lair Grill - Food Storage	F4	219	Seaton Center	H4
106	Commonwealth Village 1	J6	I.	KY Medical Services Foundation	F6	507	Seed House - Greenhouse	H5
105	Commonwealth Village 2	J6	24	KY Tobacco Research & Development Center	J4	189	Shawneetown Apartments (A-F)	L5
73	Cooper Building	F5	137	Lafferty Hall	D4	113	Shively Sports Center	H2
94	Cooper House	I6	212	Lambda Chi Alpha Fraternity House	F4	507	Sigma Alpha Epsilon Fraternity	D3
130	Cooperstown Apartments	G2	48	Lancaster Aquatics Center	H3	504	Sigma Chi Fraternity House	E3
98	Davis-Mills MRI & Woman's Cancer Facility	F5	42	Law Building	E6	121	Sigma Nu Fraternity House	D3
68	Delta Delta Delta Sorority House	D4	J.	Lexington Theological Seminary	D6	505	Sigma Phi Epsilon Fraternity	E3
122	Delta Gamma Sorority House	E3	4.	Ligon House-Donovan Scholars- 658 S. Lime	E6	L.	Sigma Pi Fraternity House	D2
E.	Delta Tau Delta Fraternity	E6	238	Linden Walk Apartments - 404	D3	241	Singletary Center for the Arts	C4
124	Delta Zeta Sorority House	E4	224	Little Fine Arts Library	D4	53	Slope Research Building	E5
489	Dental Oral Health Residence - 1117 S. Limestone	H6	322	Math House - 417 Columbia Ave	E3	65	Small Animal Lab	F5
460	Dental School Cont. Educ. Office- 149 Transcript	G6	47	Mathews Building	D6	451	Soccer Field & Press Box	L1
297	Dental Science Building	G5	417	Mathews House-Learning Services 660 S. Lime	E6	413	Soccer/Softball Locker Rooms	L1
17	Dickey Hall	C6	40	Maxwell Place	D4	452	Softball Field & Press Box	L1
76	Dimock Animal Pathology Building	G4	45	McVey Hall	E5	494	Stuckert Career Center Building	D3
72	Donovan Hall	F5	86	Medicine Office Building	G4	30	Student Center	B5
147	Dorm Complex Central Facility (Commons)	H3	19	Memorial Coliseum	B4	26	Student Center Addition	C4
350	Drug & Alcohol Research Ctr - 643 Maxwellton	E6	49	Memorial Hall	D5	15	Sturgill Development Building	D4
420	Early Childhood Psychology Serv. - 424 Euclid Ave	D3	207	Metal Arts Building	B6	1	Taylor Education Building	C6
38	Engineering Annex	D5	506	Meter Test Building - 515 Oldham Ave	G2	52	Terrell Civil Engineering Lab	E5
21	Engineer's House - 421 Rose Street	D4	35	Miller Hall	D5	61	Tobacco Research Lab	E5
314	Environmental Health & Safety - 252 E. Maxwell St	B3	51	Mineral Industries Building	E5	M.	United Methodist Student Center	F2
490	Environmental Quality Management Center	I5	107	Mining and Minerals Research Building	E4	N.	University of Kentucky Hospital	G5
F.	Episcopal Student Center	D4	274	Moloney Building (LCC)	I3	401	Veterans Hospital	N4
50	Erikson Hall	E5	225	Morgan Building (Biological Sciences)	F5	655	Weldon House - St. Agnes House - 655 Maxwellton	E6
			88	Motor Pool	K2	70	Wenner-Gren Research Lab	E5
			232	Nursing Building	F5	43	Whalen Building	C6
			461	Nursing Home Research - 153 Transcript Ave.	G8	25	White Hall Classroom Building	C5
						242	Wildcat Lodge	B4
						78	Wilford Building (Med Ctr. Annex 5)	G4
						298	Willard Medical Education Building	G5
						223	Wright Medical Plaza (Kentucky Clinic)	F5
						456	Young Library	F3
						126	Zeta Tau Alpha Sorority House	D3



University of Kentucky Campus Map



Notes

A series of horizontal dotted lines for writing notes, with a large, light blue paw print graphic overlaid in the center.