



DUKE WOMEN'S BASKETBALL

NCAA Final Four - 1999, 2002, 2003, 2006

NCAA Finalist - 1999, 2006

ACC Champions - 2000, 2001, 2002, 2003, 2004, 2010, 2011, 2013

Lindy Brown, Senior Associate SID • Women's Basketball Contact • Office: 919-684-2664 • Cell: 919-599-9821 • lindy.brown@duke.edu
www.GoDuke.com • Twitter - @DukeWBB, @CoachPDuke • Facebook - DukeWBB • Instagram - DukeWBB

2018-19 SCHEDULE (0-0 Overall, 0-0 ACC)

Date	DU	Opp	Opponent	Time/Results	WATCH
N11	21/20	--	at Northwestern	2:00 PM	Big Ten
N15	--	--	at Maine	7:00 PM	ESPN+
N15	--	--	ELON	2:00 PM	ACCN Extra

Golf Coast Showcase (Estero, Fla.)

N23	--	--	vs. Washington	1:30 PM	TBA
N24	--	--	vs. Fordham/Ball State	TBA	TBA
N25	--	--	TBA	TBA	TBA

Big Ten/ACC Challenge (Madison, Wisc.)

N28	--	8/8	at Wisconsin	9:00 PM	Big Ten
-----	----	-----	--------------	---------	---------

D2	--	--	MARIST	2:00 PM	ACCN Extra
D6	--	--	UNLV	7:00 PM	ACCN Extra
D9	--	--	SOUTH CAROLINA	2:00 PM	ACCN Extra
D20	--	--	at Oregon State	10:00 PM	Pac 12
D28	--	--	EAST CAROLINA	7:00 PM	ACCN Extra
D30	--	--	FLORIDA GULF COAST	2:00 PM	ACCN Extra
J3	--	--	at N.C. State*	7:00 PM	ACCN Extra
J6	--	--	LOUISVILLE*	2:00 PM	ACCN Extra
J10	--	--	at Georgia Tech*	7:00 PM	ACCN Extra
J17	--	--	MIAMI*	7:00 PM	ACCN Extra
J20	--	--	at Florida State*	2:00 PM	ACCN Extra
J24	--	--	WAKE FOREST*	7:00 PM	ACCN Extra
J27	--	--	SYRACUSE*	1:00 PM	RSN
J31	--	--	at Boston College*	7:00 PM	ACCN Extra
F3	--	--	PITTSBURGH*	2:00 PM	ACCN Extra
F7	--	--	at North Carolina*	7:00 PM	ACCN Extra
F10	--	--	at Virginia*	2:00 PM	ACCN Extra
F14	--	--	VIRGINIA TECH*	7:00 PM	RSN
F21	--	--	at Notre Dame*	7:00 PM	ACCN Extra
F24	--	--	at Wake Forest*	1:00 PM	ACCN Extra
F28	--	--	CLEMSON*	7:00 PM	ACCN Extra
M3	--	--	NORTH CAROLINA*	12:00 PM	ESPN2

ACC Tournament (Greensboro, N.C.)

M8	--	--	ACC Tournament Quarters	TBA	RSN
M9	--	--	ACC Tournament Semis	TBA	ESPNU
M10	--	--	ACC Tournament Champ.	1 PM	ESPN2

NCAA Tournament

M22-25	--	--	NCAA 1st & 2nd Rounds	TBA	TBA
M29-A1	--	--	NCAA Regionals	TBA	TBA
A5-7	--	--	NCAA Final Four	TBA	TBA

All times are Eastern * ACC Contest

ALL CAPS - Home Games RSN - Regional Sports Network
ACCN Extra - ACC Network Extra

RSN, which reaches in excess of 51.4 million homes and includes Fox Sports South, Fox Sports Carolinas, Fox Sports Florida, Sun Sports, Fox Sports Indiana, Fox Sports Midwest, Comcast Sports Net Mid-Atlantic, New England Sports Network (NESN), the YES Network, the Madison Square Garden Network (MSG) in New York and Root Sports in Pennsylvania. All ACC games produced as part of the RSN package will be available via WatchESPN, but are subject to regional blackout.



0-0, 0-0 ACC

At



1-0, 0-0 BTN

DUKE BLUE DEVILS AT NORTHWESTERN WILDCATS

Game 1 ■ Sunday, Nov. 11 ■ 2:00 PM (ET)
Evanston, Ill. ■ Welsh-Ryan Arena (8,117)
Big Ten Network

Tickets: www.nusports.com (1-800-467-8775)
Live Stats: www.GoDuke.com
Radio: Blue Devil IMG Sports Network
..... (www.GoDuke.com, TuneIn app)
Radio Talent: Chris Edwards (PXP)
TV/Video: Big Ten Network
TV Talent: Lisa Byington (PXP), Christy Winters Scott (Color)
Duke Head Coach: Joanne P. McCallie (Northwestern, '87)
Record: 613-228 (26)
Northwestern Head Coach: Joe McKeown (Kent State, '78)

NOTABLES

- Duke opens on the road for the sixth straight year
- Blue Devils own an all-time mark of 10-2 in true road openers, including 10 straight wins
- Duke takes home Faith Suggs (Flossmoor, Ill.) and Haley Gorecki (Palatine, Ill.) in this contest
- Coach P is a 1987 graduate of Northwestern

THE SERIES

- It marks the first meeting between Duke and Northwestern.
- Coach P is 10-1 all-time against her alma mater with the last win coming in 2007 (68-63 win by Michigan State)
- Duke is 69-52 against the Big Ten and has won three in a row
- Coach P is 99-69 all-time against the Big Ten

A WIN WOULD

- Be the 11th straight true road opening victory
- Improve Duke to 11-2 all-time in true road openers
- Move Duke to 36-8 in season openers
- Be the 15th consecutive season-opening victory

Setting the Scene...

Duke will travel to Evanston, Ill., to open the 2018-19 season Nov. 11 for a 2 p.m. (ET), tilt against Northwestern at Welsh-Ryan Arena. It will mark the re-opening of the Welsh-Ryan Arena, after extensive renovations took place this past year.

Sunday's contest will be aired live on the Big Ten Network with Lisa Byington (PXP) and Christy Winters Scott (Color) calling the action. It will also be carried on the Blue Devil IMG Sports Network via the TuneIn Radio app and www.GoDuke.com with Chris Edwards on the air beginning at 1:45 p.m. (ET).

The game will mark the homecoming for Blue Devil senior Faith Suggs and redshirt junior Haley Gorecki, who are both from the state of Illinois.

Probable Duke Starters...

No.	Name	Pos.	PPG	RPG	APG	Notes
5	Leaonna "Neah" Odum (Jr., 6-2)	F/G	9.6	6.3	1.7	John R. Wooden Award Watch List
24	Onome Akinbode-James (Fr., 6-3)	F	--	--	--	Expected to start first collegiate game
25	Jade Williams (So., 6-5)	F/C	4.6	3.2	3.2	Started eight games as a rookie
14	Faith Suggs (Sr., 6-1)	G/F	2.2	1.5	0.3	Played in 92 career games
2	Haley Gorecki (R-Jr., 6-0)	G	11.0	3.9	2.9	One of top 3-point shooters nationally

Off the Bench...

No.	Name	Pos.	PPG	RPG	APG	Notes
3	Miela Goodchild (Fr., 5-10)	G	--	--	--	Just led Australia U17 squad to bronze
23	Rayah Craig (Fr., 5-10)	G	--	--	--	Expected to see action at guard
13	Uchenna Nwoke (Fr., 6-6)	C	--	--	--	Will be big presence in post
12	Mikayla Boykin (R-Fr., 5-9)	G	4.6	3.2	3.2	Still coming back from knee injury
32	Jayda Adams (So., 6-0)	G	1.7	0.8	0.6	Hit 8 three-pointers as freshman
44	Madison Treece (So., 6-4)	F	1.0	0.9	0.3	Worked on 3-point shot in offseason
11	Sofia Roma (R-Sr., 6-2)	C	0.8	1.3	0.3	Graduate student in Duke FUQUA
30	Emily Schubert (R-So., 6-4)	C	0.0	0.0	0.2	Appeared in five career games

2018-19 Duke Radio/Television Roster



2 - Haley Gorecki
G • R-JR • 6-0
Palatine, Ill.
(William Fremd H.S.)



3 - Miela Goodchild
G • FR • 5-10
Queensland, Australia
(Moreton Bay College)



5 - Leonna Odom
F • JR • 6-2
Lompoc, Calif.
(Chaminade)



11 - Sofia Roma
C • R-SR • 6-2
Richmond Hill, N.Y.
(Wagner College)



12 - Mikayla Boykin
G • R-FR • 5-9
Clinton, N.C.
(Clinton)



13 - Uchenna Nwoke
C • FR • 6-6
Grand Prairie, Texas
(South Grand Prairie)



14 - Faith Suggs
G/F • JR • 6-1
Flossmoor, Ill.
(Homewood Flossmoor)



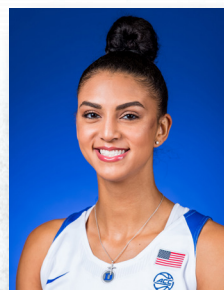
15 - Kyra Lambert
G • R-JR • 5-9
Cibolo, Texas
(Samuel Clemens)



23 - Rayah Craig
G • FR • 5-10
Scottsdale, Ariz.
(Desert Mountain)



24 - Dnome Akinbode-James
F/C • FR • 6-3
Blirstown, N.J.
(Blair Academy)



25 - Jade Williams
F/C • SO • 6-5
The Colony, Texas
(The Colony)



30 - Emily Schubert
C • R-SO • 6-4
Elizabethton, Tenn.
(Elizabethton)



32 - Jayda Adams
G • SO • 6-0
Irvine, Calif.
(Mater Dei)



44 - Madison Treece
F • SO • 6-4
St. Peters, Mo.
(Rock Bridge)



Joanne P. McCallie
Head Coach
12th Season at Duke



Hernando Planells
Associate Head Coach
7th Season at Duke



Rene Haynes
Assistant Coach
5th Season at Duke



Sam Miller
Assistant Coach
4th Season at Duke

Quick Facts

Location	Durham, N.C.
Enrollment	6,485
Founded	1838 Trinity College
Color	Duke Blue & White
Nickname	Blue Devils
Conference	ACC
Arena	Cameron Indoor Stadium (9,314)
President	Vincent Price
Director of Athletics/Vice President ...	Kevin White
Basketball Office Phone	(919) 613-7565
Head Coach	Joanne P. McCallie
Associated Head Coach	Hernando Planells
Assistant Coaches	Rene Haynes, Sam Miller
Athletic Trainer	Summer McKeehan
Sport Performance Coach	Ashleigh Beaver
Physical Therapist	Jordan Busse

Basketball History

First Year of Basketball	1975-76
Overall All-Time Record	908-395 (43 Years)
ACC Record	339-212 (40 Years)
Home Record	472-123
Road Record	278-195
Neutral Record	158-77
NCAA Appearances/Last	23/2017
NCAA Best Finish. 1999, 2006, NCAA Runner-Up	
WNIT Appearances/Last	1/1986
ACC Tournament Titles	'13, '11, '10, '04-00
ACC Regular Season Title	'13, '12, '11, '10, '07, '05, '04, '03, '02, '01, '99, '98

Media Information

All coach and player interviews must be arranged through the sports information office by getting in touch with senior associate sports information director Lindy Brown at 919-684-2664 or lindy.brown@duke.edu.

Sports Information Office Address:
 Duke Athletics External Operations |
 287 Scott Family Athletics Performance Center
 Box 90557 | Durham, NC 27708

Breaking Down the Numbers

**Under Head Coach Joanne P. McCallie
 2007-08 through 2017-18
 (As of 3-24-18)**

Record when Duke has:
 Given up 40 pts. or fewer: 40-0
 Given up 50 pts. or fewer: 107-0
 Given up 60 pts. or fewer: 185-10
 Given up 70 pts. or fewer: 234-35
 Given up more than 70 pts.: 16-42

**Scored 70+ points: 200-13
 Scored 80+ points: 14-3**

What is Next?...

Duke will travel to Bangor, Maine, to take on Maine Thursday, Nov. 15 at 7 p.m. The contest will be aired live on ESPN+.

The contest will take Blue Devil head coach Joanne P. McCallie back to her home state of Maine. She is a native of Brunswick, Maine and got her first head coaching position at Maine where she totaled a 167-73 record over eight years (1992-2000).

Three Keys...

- Duke owns an all-time record of 10-2 in true road openers, including 10 straight wins. The Blue Devils own an overall mark of 35-8 in season openers over the history of the program, including 14 consecutive wins. It marks the sixth straight year Duke will open the season on the road as the Blue Devils totaled a 74-61 win at Grand Canyon in 2017-18.
- The Blue Devils will open the season with six road games over its first seven contests. Following the opening seven games, Duke will play five of the next six games at home in Cameron Indoor Stadium.
- Freshman Miela Goodchild returned from India Nov. 4, after helping lead Australia to a bronze medal at the FIBA U18 Asian Championship. She was given a few days off and returned to practice Friday morning, prior to heading to Northwestern Saturday. Goodchild will play in the season opener.

Storylines/Other Blue Devil Notes...

- Duke will face Northwestern for the first time in school history. The Blue Devils own a 164-60 mark against first time opponents, while Coach P has notched a 39-3 record in 11 seasons at Duke. In 28 out of the last 29 games, the Blue Devils have come away with wins.
- When Duke and Northwestern hit the hardwood Sunday, there will be three different players from Nigeria -- Onome Akinbode-James and Uchenna Nwoke of Duke and Pallas Kunaiyi-Akpanah of Northwestern. Akinbode-James and Kunaiyi-Akpanah came into the U.S. via the same program from Nigeria and met a couple of times.
- The Blue Devils own a 13-game winning streak against unranked opponents heading into Sunday's contest.
- There are 26 returning double-digit scorers in the ACC in 2018-19 with every ACC team except for Pitt having at least one. Notre Dame and Syracuse have the most with four each. Duke features only one (Haley Gorecki). Seven ACC teams return two or more.
- The 2018-19 Duke team is tied for the second youngest Duke team based on percentage of freshman and sophomores (69.23%). The 2011-12 was 75.0 percent freshmen and sophomores to lead the way. The nine freshmen and sophomores are tied for the most under Coach P at Duke (2015-16 and 2011-12).
- Duke was one of the best teams in the nation a year ago in opponent paint scoring holding teams to only 19.97 points a game. This ranked as the second-lowest for the Blue Devils over the last seven years (19.06 in 2014-15).
- In terms of the youth of the ACC, Duke's 69.23 percent of freshmen and sophomores is the fourth-highest -- Georgia Tech (76.92), Boston College (75.0)

Tale Of The Tape

Duke.....	Statistical Comparison (2017-18 Stats)	NU
24-9	Record	12-20
.456	Field Goal Percentage421
.354	Opponent Field Goal Percentage409
.385	Three-Point Field Goal Percentage338
6.3	Three-Pointers Per Game	3.9
.692	Free Throw Percentage710
11.9	Offensive Rebounds Per Game	11.1
38.0	Rebound Average	35.9
+4.7	Rebound Margin	+3.2
68.8	Points Per Game	61.8
56.3	Points Allowed Per Game	65.4
+12.5	Point Differential	-3.6
4.8	Blocks Per Game	4.5
14.8	Assists Per Game	15.3
10.3	Steals Per Game	6.6
15.2	Turnovers Per Game	16.5

and Florida State (72.73).

- Duke returns just 39.7 percent of its scoring from the 2017-18 season. It is the lowest returning scoring percentage since the conclusion of the 2013-14 season. The Blue Devils lost 43.7 points and 60.3 percent of scoring. It is the most since the 2013-14 season, which Duke lost 66.9 percent of its scoring.
- The Blue Devils have won 31 out of its last 33 home contests in Cameron Indoor Stadium.
- Duke graduated two of the best scorer's in Blue Devil history -- Rebecca Greenwell (1,874 points) and Lexie Brown (1,263 points in two years). They were one of the most dynamic scoring duos in the nation the last two years and Duke will have a much different look in 2018-19 without those guards.
- All 29 of Duke's 2018-19 contests will be aired on some type of television between ESPN+, ACC Network Extra, ESPN2, RSN-TV, PAC 12 Network and Big Ten Network.
- Follow @DukeWBB and @CoachPDuke on Twitter to get the latest updates on Duke women's basketball. Also, "Like" Duke Women's Basketball on Facebook to get the latest videos, pictures and more. DWB is on Instagram at [dukewbb](https://www.instagram.com/dukewbb).

Hey, I Know You...

Blue Devil redshirt junior Haley Gorecki will go up against one of her former high school and club teammates, Bryana Hopkins, on Sunday. The two played for William Fremd H.S., and also for the Illinois Elite and Midwest Elite club teams.

Duke freshman Rayah Craig and Northwestern redshirt freshman Lauryn Satterwhite are both from Arizona. The two played together growing up and then played against each other in high school and club basketball.

A Look at Northwestern...

Northwestern enters the 2018-19 season returning five out of their top six scorers from a year ago, including Lindsey Pulliam (15.0 points), Abi Scheid (12.0 points) and Pallas Kunaiyi-Akpanah (11.3 points, 11.9 rebounds).

The Wildcats are coming off totaling a 12-20 record in 2017-18, including a 4-12 mark in Big Ten play (12th).

In the season opener Tuesday, Northwestern totaled a 59-57 victory over Wisconsin-Green Bay on the road.

The Series with Northwestern...

On Sunday, Duke travels to Evanston, Ill., to face Northwestern for the first time in program history. The Wildcats were 7-8 on their home turf a season ago, while the Blue Devils played to the tune of a 7-6 record on the visiting end.

Coach P is 10-1 when coaching against her Alma Mater, having most recently coached Michigan State to a 68-63 home victory against the Wildcats in 2007.

Duke Versus the Big Ten Conference...

Duke holds a 69-52 record against Big Ten Conference opponents – Illinois (0-3), Iowa (1-1), Maryland (41-40), Michigan (4-0), (Michigan State (2-1), Minnesota (1-1), Nebraska (1-1), Ohio State (2-0), Penn State (5-1), Purdue (6-3), Rutgers (4-2), and Wisconsin (2-0).

Coach P and the Blue Devils have won their last three meetings against Big Ten teams. McCallie is 99-69 through her career against the Big Ten, having coached in the conference from 2001 to 2007.

Northwestern Storylines...

A 1987 graduate of Northwestern, head coach Joanne P. McCallie will return to her alma mater to face the Wildcats this weekend.

McCallie will also be reunited with her son, Jack, who is a freshman at Northwestern. He is also a manager for the Wildcat men's basketball squad coached by former Duke standout Chris Collins.

Duke is also taking senior Faith Suggs (Flossmoor, Ill.) and Haley Gorecki (Palatine, Ill.) back to their home state of Illinois.

Gorecki's family lives about 20 minutes from Northwestern. She attended football and basketball games growing up. Her high school basketball team went to a Northwestern women's basketball camp one summer as well.

Suggs' hometown is approximately 45 minutes from Northwestern. She went to a couple of games in Evanston growing up.

In the Month of November...

Duke has won 37 out of the last 41 true road games in the month of November over the last six years, which is a 90.2 winning percentage.

Coach P owns a 62-9 record in November (87.3%) since arriving at Duke. In true road games in the month of November, Coach P has totaled a 21-5 record (80.8 percentage).

One of Tallest Teams...

Duke continues its theme of having tall teams in 2018-19 as the Blue Devils will feature fourth tallest team in school history standing an average of 73.21 inches.

The 73.21 average height is just shy of 2016-17 (73.39), 2014-15 (73.25) and 2011-12 (73.25). All four teams feature a 6-1 frame.

Duke is the tallest team in the ACC with a 6-1

average, while Wake Forest ranks second with a 72.57 ledger. In looking at the Blue Devils' non-conference opponents, Oregon State (73.75) just clips the Blue Devils.

The Blue Devils feature 10 players standing 6-0 or taller and seven at 6-2 or better on the 2018-19 roster.

Young Team...

Duke features one of the youngest teams in NCAA Division I this season with an average age of 19.43 years old.

The squad is also the fifth youngest team Coach P has had in her 12 seasons with the Blue Devils. The 201-12 roster featured a 19.00 average age.

Duke's current roster features five freshmen, which is the second-most on a squad under Coach P at Duke behind 2015-16 (6) and 2017-18 (6).

Youngest Teams in NCAA Division I

Rank	Team	Age
1.	UMBC & SMU	19.0
3.	Oklahoma & Georgia Tech	19.1
5.	Wichita State	19.2
6.	Northern Kentucky	19.3
7.	Georgia Southern & Old Dominion	19.33
9.	Florida State	19.4
10.	Duke	19.43
11.	Alabama	19.46
12.	FAU	19.5
13.	Vermont	19.7

Alaska Anchorage Exhibition Recap...

The 20th-ranked Blue Devils defeated Alaska Anchorage, 75-54, in exhibition play Nov. 4 in Cameron Indoor Stadium as redshirt junior Haley Gorecki and freshman Onome Akinbode-James both notched double-doubles and five Blue Devils scored double digits.

After totaling just four points in the first half, Gorecki ended the contest with 18 points and 10 boards as she knocked down 3-of-5 treys, picked up four assists and collected a team-high three steals in 34 minutes of action.

Rookie Akinbode-James tallied 11 points and a team-high 11 boards in 33 minutes. The Blairstown, N.J., native went 4-of-5 from the floor and registered one block, assist and steal.

Akinbode-James got the ball rolling for the Blue Devils on both ends of the floor, knocking down two free throws before going the distance for a big block on the post to set up a Jade Williams' layup for an early 6-3 lead. The Seawolves were hot from beyond the arc to start the contest, hitting 41.7 percent, which included a trey by Safiyyah Yasin to cut Duke's lead. Redshirt junior Haley Gorecki responded with a three of her own from senior Faith Suggs, while Odom notched her 11th point of the contest early off Alaska's seventh turnover to hold a 29-17 lead.

The Blue Devils tallied 14 points off the Seawolves' nine turnovers as Odom was a perfect 6-of-6 from the floor with a team-high 13 points.

Williams continued her strong play into the second quarter with a three-point play to give her double figures

**Joanne P. McCallie
Head Coach**



COACHING HONORS

National Coach of the Year

Associated Press	2005
Basketball Times	2005
Nike	2005

Conference Coach of the Year

Atlantic Coast Conference	2010, 2012, 2013
Big Ten	2005
America East	1999
North Atlantic	1995 & 1996

** First D-I coach to win Coach of the Year honors in four different conferences*

Basketball Coaches Association Michigan College Coach of the Year

Michigan State	2005
----------------	------

COACHING HIGHLIGHTS

NCAA National Championship Game	1 (2005)
NCAA Final Four	1 (2005)
NCAA Elite Eight	5 (2005, 2010, 2011, 2012, 2013)
NCAA Sweet Sixteen	9 (2005, '06, '08, '10, '11, '12, '13, '15, '18)
NCAA Tournament Bids	21 (1995, '96, '97, '98, '99, 2000, '03, '04, '05, '06, '07, '08, '09, '10, '11, '12, '13, '14, '15, '17, '18)

RECORD BREAKDOWN

Overall	613-228 (26 Years)
Record at Duke	297-80 (11 Years)
Atlantic Coast Conference	132-38 (11 Years)
ACC Tournament	19-8 (11 Appearances)
NCAA Tournament	31-21 (21 Appearances)
Record at Michigan State	149-75 (7 Years)
Big Ten (while at MSU)	68-44 (7 Years)
Record at Maine	167-73 (8 Years)
North Atlantic (while at Maine)	48-14 (4 Years)
America East (while at Maine)	61-11 (4 Years)
Home	332-75 (26 Years)
Away	202-110 (26 Years)
Neutral	79-43 (26 Years)

Streaks

Overall	Lost 1
Unranked teams anywhere	Won 1
Ranked teams anywhere	Lost 1
Home	Won 3
Home ACC	Won 3
Home non-conference	Won 9
Home unranked	Won 14
Home unranked non-conference	Won 8
Home ranked teams	Won 1
Road	Won 1
Road ACC	Lost 1
Road ranked teams	Won 1
Road unranked teams	Lost 1
Neutral	Lost 1
Neutral ranked teams	Lost 1
Neutral unranked teams	Won 13

Consecutive Games with a 3-Pointer Made

Jayda Adams	2
-------------	---

Consecutive Free Throws Made

Jade Williams	4
Mikayla Boykin	3
Haley Gorecki	2
Jayda Adams	2
Madison Treece	1
Kyra Lambert	1

Consecutive Double-Figure Scoring Games

Leaonna Odom	3
--------------	---

Starts

	Consecutive	Career
Leaonna Odom	8 (5-3)	44 (33-11)
Faith Suggs	3 (2-1)	8 (6-2)
Jade Williams		8 (6-2)
Kyra Lambert		55 (44-11)
Haley Gorecki		14 (11-3)
Mikayla Boykin		8 (6-2)

Games Played

Faith Suggs	92 (67-25)
Leaonna Odom	67 (52-15)
Kyra Lambert	65 (48-17)
Haley Gorecki	38 (28-10)
Jayda Adams	32 (23-9)
Jade Williams	32 (23-9)
Madison Treece	17 (16-1)
Sofia Roma	12 (9-3)
Mikayla Boykin	10 (8-2)
Emily Schubert	6 (6-0)

Rankings

In the AP Top 25	34
Entered week of Dec. 5, 2016	

at the mid-way mark. Odom was dishing the ball as well with a team-high six assists as she found Williams on the baseline for a quick two to bring Duke's lead to 46-27 at the half.

As a team, Duke shot 66.7 percent (18-of-27) from the floor in the first half to Alaska Anchorage's 34.5 percent (10-of-29).

Gorecki got going in the second half with 14 points after totaling just four in the first. The Blue Devils were held scoreless for nearly three minutes in the third before Odom's 17th point nearing the five-minute mark. Following the scoring drought, Duke went on an 8-0 run as the Seawolves were hitting just 25.0 percent during the third frame to trail Duke 61-42.

Alaska Anchorage limited turnovers in the second half with seven but ended the contest giving up 23 points off 19 turnovers.

Williams concluded the game with 17 points, six boards and two blocks while freshman Rayah Craig added eight points and three assists.

As a team, Duke shot 50.9 percent (28-of-55) from the floor, 41.7 percent (5-of-12) from three-point land and 60.9 percent (14-of-23) from the charity stripe.

Dynamic Duo...

The tandem of Haley Gorecki and Leaonna Odom are expected to be one of the highest scoring duos in the nation in 2018-19.

Gorecki showcased her talent last season before being injured when she scored 57 points in two games against North Carolina and Virginia Tech. She drained 44 three-pointers in only 23 contests.

Odom averaged 21.0 points and 7.0 rebounds in the NCAA Tournament a year ago, including scoring a career-high 25 points against Belmont and 22 points versus top-seeded UConn.

Goodchild Wins Bronze in India...

Duke freshman Miela Goodchild guided Australia to the bronze medal of the FIBA Under-18 Asian Championship in India with a 75-58 victory over Korea in the third place game.

Goodchild, who is from Brisbane, Queensland, Australia, tallied a game-high 21 points to go along with nine rebounds to exact revenge on Korea, who

The Rankings

Associated Press Poll (Preseason)	USA TODAY Coaches Poll (Preseason)
1. Notre Dame (31)	1. Notre Dame (30)
2. Connecticut	2. Connecticut (2)
3. Oregon	3. Oregon
4. Baylor	4. Louisville
5. Louisville	5. Baylor
6. Mississippi State	6. Mississippi State
7. Stanford	7. Stanford
8. Oregon State	8. Texas
9. Maryland	9. Oregon State
10. South Carolina	10. Maryland
11. Tennessee	11. South Carolina
11. Texas	12. Tennessee
13. Iowa	13. Georgia
14. Georgia	14. Missouri
15. DePaul	15. DePaul
16. Missouri	16. NC State
17. NC State	17. Iowa
18. Syracuse	18. Syracuse
19. Marquette	19. Marquette
20. Texas A&M	20. Duke
21. Duke	21. South Florida
22. South Florida	21. Texas A&M
23. Arizona State	23. UCLA
24. California	24. Miami
25. Miami	25. West Virginia

Duke in the Polls

	AP	USA TODAY
Preseason	21	20

The Duke Roster

No.	Name (@Twitter Handle)	Ht.	Yr.	Pos.	Exp.	Hometown (High School/Last School)
2	Haley Gorecki (@HaleyGorecki)	6-0	R-Jr.	G	3V	Palatine, Ill. (William Fremd)
3	Miela Goodchild (@MielaGoodchild)	5-10	Fr.	G	HS	Brisbane, Queensland, Australia (Moreton Bay College)
5	Leaonna Odom	6-2	Jr.	F	2V	Lompoc, Calif. (Chaminade)
11	Sofia Roma	6-2	R-Sr.	C	TR-4V	Richmond Hill, N.Y. (Wagner College)
12	Mikayla Boykin (@mikayla_niyel)	5-9	R-Fr.	G	1V	Clinton, N.C. (Clinton)
13	Uchenna Nwoke (@UchennaNwoke_)	6-6	Fr.	C	HS	Grand Prairie, Texas (South Grand Prairie)
14	Faith Suggs (@faith_suggs)	6-1	Sr.	G/F	3V	Flossmoor, Ill. (Homewood Flossmoor)
15	Kyra Lambert (@bballaholic_15)	5-9	R-Jr.	G	3V	Cibolo, Texas (Samuel Clemens)
23	Rayah Craig (@rayahcraig)	5-10	Fr.	G	HS	Scottsdale, Ariz. (Desert Mountain)
24	Onome Akinbode-James	6-3	Fr.	F/C	HS	Blairtown, N.J. (Blair Academy)
25	Jade Williams (@jadeswilliams25)	6-5	So.	F/C	1V	The Colony, Texas (The Colony)
30	Emily Schubert (@e_schubert35)	6-4	R-So.	C	2V	Elizabethton, Tenn. (Elizabethton)
32	Jayda Adams (@realjayadams)	6-0	So.	G	1V	Irvine, Calif. (Mater Dei)
44	Madison Treece (@TREECEmadison)	6-4	So.	F	1V	St. Peters, Mo. (Rock Bridge)

Head Coach: Joanne P. McCallie (Northwestern, '87) - @CoachPDuke

Associate Head Coach: Hernando Planells (Regis) - @hernandojr

Assistant Coach: Rene Haynes (Michigan State, '07) - @CoachHaynesDuke; Sam Miller (Adrian College, '10) - @SamMiller906

Special Assistant: Jim Corrigan (Duke, '80)

Duke Pronunciation Guide

Rayah Craig	RAY-ugh
Miela Goodchild	Mee-la
Haley Gorecki	Gore - wreck - e
Rene Haynes	Ree - Knee
Onome Akinbode-James	Uh-nuh-meh; Ah-ken-bode
Uchenna Nwoke	You-Chen-Nuh; Woah-kay
Leonna Odom	Lee - AH - na
Joanne P. McCallie	mc - CAW - lee

knocked off Australia, 63-62, to conclude the group phase on Wednesday.

With Australia advancing to the semifinals in the Asian Championship, the Gems qualified for the 2019 Under-19 World Cup, which will be held in Thailand from July 20-28.

For the tournament, Goodchild averaged 17.7 points, 6.0 rebounds, 2.7 assists and 3.0 steals. Her 17.7 points per game ranked first in the championship. Her rebounding and assist numbers ranked 11th and 12th, respectively. Her 3.0 steals were fourth-best in the competition.

Akinbode-James Impressive Early...

Duke freshman Onome Akinbode-James has been very impressive in practice as well as in the Blue/White and exhibition against Alaska Anchorage.

Akinbode-James registered a double-double with 11 points and 11 rebounds in 33 minutes as she hit 4-of-5 field goals.

She is expected to start the season opener at Northwestern and would become the 28th Blue Devil to start their first collegiate contest. It will also mark the eighth Duke freshman to start the season opener under Joanne P. McCallie in her 12 years at Duke.

It would be the second year in a row that a freshman has started the season opener as Mikayla Boykin started the contest at Grand Canyon last season.

Sharpshooter Returns...

Of any returning ACC player who attempted over 100 three-pointers in 2017-18, Duke redshirt junior Haley Gorecki has the highest returning percentage of 42.3.

Gorecki hit 44-of-104 attempts for a 42.3 percentage last year.

Player, Team	Yr	3PT	3PTA	3PT%
Haley Gorecki, Duke	RJr.	44	104	42.3
Asia Durr, Louisville	Sr.	115	277	41.5
Paris Kea, UNC	Sr.	62	153	40.5
Miranda Drummond, Syr.	Sr.	84	209	40.2
Marina Mabrey, N. Dame	Sr.	85	218	39.0
Alayna Gribble, Pitt	Jr.	42	108	38.9
Taylor Emery, VT	Sr.	69	178	38.8

Blue Devils Lose Lambert for Season...

For the second straight season, Duke point guard Kyra Lambert will be sidelined as the redshirt junior reinjured her knee in the preseason. She had surgery November 1 for a meniscal tear and to reconstruct her ACL in her left knee.

Lambert, who was named to the Nancy Lieberman Award watch list the same week she was injured, was

still going through rehab and had yet to be cleared for practices involving contact.

A native of Cibolo, Texas, Lambert had started 56-of-65 contests over her first two years prior to the injury in 2017, which was a freak contact injury in the NCAA Tournament first round against Hampton.

She started all 33 games as a sophomore, while averaging 7.8 points, 3.5 assists, 3.2 rebounds and 1.7 steals. Lambert was voted one of three captains for the 2017-18 campaign and one of four captains in 2018-19.

Lambert, who will graduate in May of 2018 with a degree in cultural anthropology and environmental science, still has two years of eligibility remaining as she will apply for a sixth year.

Boykin Continues to Improve...

After tearing her ACL last December, redshirt freshman Mikayla Boykin continues to make progress in her return to the court.

Boykin is targeting a December return to the squad if all continues to go well in her rehab.

Over the summer, the NCAA awarded Boykin a medical hardship waiver for the 2017-18 season and she will have four years remaining.

Boykin started the first eight contests last year and averaged 4.6 points, 3.2 assists, 3.2 rebounds and 1.2 steals a game. The 5-9 guard from Clinton, N.C., opened her collegiate career on the road at Grand Canyon with a season-high 12 points.

The 2017 ACC Newcomer Watch List selection injured her left knee on Dec. 10 as the Blue Devils downed Winthrop, 101-30.

Standing Tall...

Duke features one of the tallest women's basketball players in school history on the roster as a rookie in 2018-19. Uchenna Nwoke out of Grand Prairie, Texas and South Grand Prairie H.S., stands 6-6.

Nwoke is tied for the third tallest student-athlete in Duke history.

Tallest Players in Duke History

1. Alison Bales (2004-07) 6-7
- Lello Gebisa (2000-01) 6-7
- 3. Uchenna Nwoke (2018-19-present) 6-6**
- Azura Stevens (2015-16) 6-6
- Michele Van Gorp (1998-99) 6-6

Nwoke is tied for the second-tallest player in the ACC in 2018-19.

Tallest Players in the ACC in 2018-19

1. Felicia Aiyeotan, Virginia 6-9
- 2. Uchenna Nwoke, Duke 6-6**
- Naomi Van Nes, UNC 6-6
4. Elissa Cunane, NC State 6-5
- Elizabeth Dixon, Georgia Tech 6-5

Odom on Small Forward & Wooden List...

The 20 watch list candidates for the 2019 Cheryl Miller Award were announced with Duke junior Leonna Odom selected.

Named after the three-time Naismith Player of the Year and Class of 1995 Hall of Famer, the annual award

Double-Doubles

Haley Gorecki (1)

2017-18 (1)

13 pts., 10 assists vs. Maine

Kyra Lambert (1)

2016-17 (1)

12 pts., 13 assists at North Carolina

Leonna Odom (4)

2017-18 (3)

13 pts., 12 reb. at Villanova

14 pts., 10 reb. vs. Presbyterian

15 pts., 12 reb. vs. Florida State

2016-17 (1)

16 pts., 10 reb. at Pepperdine

**Get to Know the Blue Devils
Human Interest Ideas**

Haley Gorecki Return After Two Hip Surgeries

After seeing action in only 14 games as a freshman, before suffering a hip injury, Gorecki missed the 2016-17 season recovering, before coming back last year. After being inserted into the starting lineup, Gorecki was one of the best players in the ACC. This was before she suffered another hip injury to the other hip. She has come back this season stronger than ever. The Duke staff kept her out of some of the summer workouts to try to keep her fresher for the season. Gorecki is expected to be one of the best players nationally in 2018-19

Nigerian Connection

Duke features two student-athletes from Nigeria on the roster -- Onome Akinbode-James and Uchenna Nwoke. The Blue Devils are adding another one in the next signing class as well.

Duke has players from Nigeria, Australia and Puerto Rico/Italy in 2018-19

Duke & The Ronald McDonald House

Redshirt junior Kyra Lambert has been volunteering at the Ronald McDonald House for a little over a year now. She tries to go once a week when her class schedule/workouts allow. She does guest services and helps out with whatever the managers need help with -- answering phones, getting supplies, helping cook/clean, etc. Duke women's basketball has had a special relationship with the Durham RMH and has been going for over 20 years. The Blue Devils started a tradition where families/visitors write on ceiling tiles and it continues on today.

in its second year recognizes the top small forwards in women's NCAA Division I college basketball.

Odom was also one of 30 watch list selections for the John R. Wooden Award. The ACC led all conferences with nine selections.

A product of Lompoc, Calif., Odom came on strong last season in the NCAA Tournament averaging 21.0 points, 7.0 rebounds and 3.0 assists in three games. She totaled a career-high 25 points against Belmont and then collected a game-high 22 points, eight rebounds and four assists in the NCAA regional semifinal against top-seeded Connecticut.

On the season a year ago, Odom started 27-of-33 and averaged 9.6 points, 6.3 rebounds and blocked 38 shots.

Williams on Top Center List...

Duke sophomore Jade Williams has been tabbed one of 20 watch list candidates for the 2019 Lisa Leslie Award.

Named after the three-time All-America and 1994 National Player of the Year, the annual award in its second year recognizes the top centers in women's NCAA Division I college basketball.

A native of The Colony, Texas, Williams played in all 33 games and made eight starts as a rookie a season ago. She is expected to step up in 2018-19 and be a force inside for the Blue Devils. A 2018 All-ACC Freshman selection and former McDonald's All-America, Williams averaged 4.0 points and 3.0 rebounds as a freshman and blocked a team-high 40 shots.

Odom Among Best in Steals/Blocks...

Leaonna Odom is one of only three returning players in the ACC to register over 30 steals and 35 blocks a year ago -- Odom (36 steals, 38 blocks), Kalista Walters of Pitt (47 steals, 53 blocks) and Regan Magarity of Virginia Tech (42 steals, 52 blocks).

Odom is one of only two Duke players in school history to collect at least 31 steals and 31 blocks in her first two years at Duke. The other is Elizabeth Williams, who has her No. 1 jersey hanging in Cameron Indoor Stadium.

Leaonna Odom

2016-17 - 39 steals, 32 blocks

2017-18 - 36 steals, 38 blocks

Elizabeth Williams

2011-12 - 51 steals, 116 blocks

2012-13 - 41 steals, 107 blocks

Duke No. 20/21 in Preseason Rankings...

The Associated Press released its preseason top 25 ranking with the Blue Devils tabbed No. 21 overall. It marked the 18th time out of the last 19 years Duke has been ranked in the preseason by the writers.

Since 2001, Duke and Notre Dame are tied for the most appearances by ACC teams in the Associated Press preseason top 25 with 17 selections.

Duke is slated to face four top 10 opponents this season -- Notre Dame, Louisville, Oregon State and South Carolina.

A total of six ACC teams received preseason recognition by the Associated Press -- Notre Dame (1), Louisville (5), NC State (17), Syracuse (18), Duke (21) and Miami (25).

Duke was also selected No. 20 in the preseason USA TODAY Sports Top 25 coaches poll. It marked the 22nd time out of the last 23 years the Blue Devils have been ranked in the preseason coaches' poll. Duke has been tabbed in the top 20 of the poll in 21 of those 22 seasons.

Planells to Coach New Zealand U17 Squad...

Duke associate head coach Hernando Planells has been selected as the head coach of the New Zealand Women's U17 National Team.

Planells was one of two coaches in the United States tabbed to New Zealand head coach positions as Aaron Fearne, an assistant coach at Charlotte, was tabbed the New Zealand Men's U17 National Team head coach.

An assistant coach and associate head coach at Duke since 2013, Planells has been influential on the recruiting trail and on the court with the Blue Devils. He has helped bring in the No. 1 class in the nation in 2015 and No. 2 class in 2014, while helping lead Duke to five NCAA Tournament appearances, the 2013 ACC Championship and to the NCAA Elite Eight in 2013.

Planells first action with New Zealand on the court will be at the 2019 Oceania Championships in New Caledonia in August of 2019.

Preseason ACC Polls...

In the preseason ACC polls, Duke was selected fifth by the Blue Ribbon Panel and sixth by the ACC coaches.

In the Blue Ribbon Poll, Notre Dame, Louisville, Syracuse, NC State, Duke, Miami, Florida State, North Carolina, Virginia, Georgia Tech, Virginia Tech, Wake Forest, Pitt, Boston College and Clemson rounded out the poll.

Duke did not receive any preseason selections on the Blue Ribbon Panel or league coaches All-ACC team or newcomer watch list.

The coaches selected Notre Dame, Louisville, Syracuse, NC State, Miami, Duke, North Carolina, Florida State, Georgia Tech, Virginia Tech, Virginia, Wake Forest, Pitt, Clemson and Boston College.

Greenwell Moves to Radio Booth...

After closing her career as one of the all-time best scorers and the Duke record holder in three-pointers made and attempted, Rebecca Greenwell is moving to the radio booth to assist Chris Edwards on the call in 2018-19.

Greenwell is recovering from knee surgery following the conclusion of her collegiate career. While going through rehab, she has worked in the women's and men's basketball offices.

She will be providing color commentary along with Edwards during the season.

Roma in Duke Fuqua...

The Blue Devils currently feature one student-athlete, Sofia Roma, enrolled in the MMS Program at

the Duke Fuqua School of Business. Roma enrolled in July.

Duke Captains...

The Blue Devils feature four captains in 2018-19 as redshirt senior Sofia Roma, redshirt junior Haley Gorecki, junior Kyra Lambert and senior Faith Suggs were selected.

2018-19 Honors

Kyra Lambert

Preseason

- Nancy Lieberman Award Watch List

Leaonna Odom

Preseason

- Cheryl Miller Award Watch List
- John R. Wooden Award Watch List

Jade Williams

Preseason

- Lisa Leslie Award Watch List

R-Senior Sofia Roma

2017-18 - Redshirt Junior Year

	Min	FG-A	3G-A	FT-A	OR/TOT	PFA	T	B	S	SPTS	
at GCU	DNP	-	-	-	-	-	-	-	-	-	
High Point	DNP	-	-	-	-	-	-	-	-	-	
at Villanova	DNP	-	-	-	-	-	-	-	-	-	
at ODU	DNP	-	-	-	-	-	-	-	-	-	
Oregon State	DNP	-	-	-	-	-	-	-	-	-	
Presbyterian	DNP	-	-	-	-	-	-	-	-	-	
Ohio State	DNP	-	-	-	-	-	-	-	-	-	
at S.Carolina	DNP	-	-	-	-	-	-	-	-	-	
UNCG	DNP	-	-	-	-	-	-	-	-	-	
Winthrop	DNP	-	-	-	-	-	-	-	-	-	
Maine	DNP	-	-	-	-	-	-	-	-	-	
Wyoming	DNP	-	-	-	-	-	-	-	-	-	
Liberty	DNP	-	-	-	-	-	-	-	-	-	
at Miami	DNP	-	-	-	-	-	-	-	-	-	
at Louisville	DNP	-	-	-	-	-	-	-	-	-	
NC State	DNP	-	-	-	-	-	-	-	-	-	
at Wake Forest	DNP	-	-	-	-	-	-	-	-	-	
Virginia	DNP	-	-	-	-	-	-	-	-	-	
at Va. Tech	DNP	-	-	-	-	-	-	-	-	-	
at UNC	DNP	-	-	-	-	-	-	-	-	-	
Boston College	8	1-2	0-0	0-2	1-4	1	0	1	0	1	2
at Pittsburgh	6	1-1	0-0	0-0	0-2	1	0	1	0	0	2
Georgia Tech	7	0-0	0-0	0-0	0-0	0	0	2	0	0	0
Notre Dame	DNP	-	-	-	-	-	-	-	-	-	-
Wake Forest	13	2-3	0-0	1-3	3-4	2	1	0	0	1	5
at Clemson	7	0-1	0-0	0-0	0-0	0	0	2	0	1	0
at Syracuse	3	0-0	0-0	0-0	0-1	0	1	0	0	0	0
Florida State	9	0-2	0-0	0-0	1-2	2	0	0	0	0	0
North Carolina	9	0-1	0-0	0-0	0-2	0	1	0	0	0	0
vs. NC State	3	0-1	0-0	0-0	0-0	3	0	2	0	1	0
vs. Belmont	1	0-0	0-0	0-0	0-0	0	0	0	0	0	0
at Georgia	2	0-1	0-0	0-0	1-1	0	0	0	0	0	0
vs. UConn	3	0-0	0-0	0-0	0-0	1	0	0	0	0	0

Senior Faith Suggs

2017-18 - Junior Year

	Min	FG-A	3G-A	FT-A	OR/TOT	PFA	T	B	S	SPTS	
at GCU	4	0-1	0-1	0-0	0-0	0	0	0	0	1	0
High Point	11	0-2	0-1	3-6	3-3	1	1	0	0	0	3
at Villanova	3	0-1	0-0	0-0	0-0	1	0	0	0	0	0
at ODU	6	0-1	0-0	0-0	1-2	1	0	0	0	0	0
Oregon State	DNP	-	-	-	-	-	-	-	-	-	-
Presbyterian	18	3-3	1-1	1-1	0-2	0	1	1	0	1	8
Ohio State	1	0-0	0-0	0-0	0-0	0	0	0	0	0	0
at S.Carolina	7	0-0	0-0	0-0	0-0	1	0	0	0	0	0
UNCG	13	1-1	0-0	0-0	0-0	1	2	0	0	0	2
Winthrop	13	3-4	0-0	2-2	3-5	2	1	0	0	0	8
Maine	26	2-4	1-1	0-2	1-3	2	1	0	0	5	5
Wyoming	25	2-4	1-2	0-0	1-2	2	1	0	0	2	5
Liberty	21	0-1	0-0	1-2	2-7	1	0	3	0	1	1
at Miami	4	0-0	0-0	0-0	1-1	0	0	1	0	0	0
at Louisville	6	0-1	0-0	0-0	0-0	0	0	0	0	0	0
NC State	8	1-1	1-1	1-2	0-1	0	0	0	0	0	4
at Wake Forest	2	0-1	0-0	0-0	0-0	0	0	1	0	0	0
Virginia	DNP	-	-	-	-	-	-	-	-	-	-
at Va. Tech	6	1-3	0-0	0-0	1-1	2	0	2	0	0	2
at UNC	5	0-0	0-0	2-2	0-0	1	0	1	0	0	2
at Pittsburgh	14	1-3	1-2	0-0	0-2	1	1	0	0	0	3
Georgia Tech	8	1-1	0-0	1-1	0-0	0	1	0	0	0	3
Notre Dame	6	0-1	0-1	0-0	0-0	1	0	1	1	0	0
Wake Forest	5	0-0	0-0	0-0	0-0	0	0	0	0	0	0
at Clemson	11	1-2	0-0	2-2	1-2	0	0	0	0	0	4
at Syracuse	1	0-0	0-0	0-0	0-1	1	0	1	0	0	0
Florida State	6	0-1	0-1	0-0	0-1	1	0	1	0	0	0
North Carolina	6	0-0	0-0	0-0	1-1	1	0	0	0	0	0
vs. NC State	15	0-0	0-0	0-0	0-0	1	0	1	0	0	0
vs. Belmont^	29	1-4	0-2	4-6	5-8	1	1	1	0	1	6
at Georgia^	26	2-5	1-2	1-3	0-4	1	0	1	0	2	6
vs. UConn^	28	0-4	0-3	0-0	0-1	0	1	0	0	0	0

2016-17 - Sophomore Year

	Min	FG-A	3G-A	FT-A	OR/TOT	PFA	T	B	S	SPTS	
at Liberty	14	2-4	0-1	0-0	1-2	3	1	0	4	4	4
Penn	0+	0-0	0-0	0-0	0-0	0	0	0	0	0	0
Longwood	12	2-6	0-3	0-0	0-3	1	0	1	0	0	4
Grand Canyon	11	2-2	0-0	0-0	0-1	1	0	0	0	2	4
at Vanderbilt	1	1-1	0-0	0-0	0-0	1	0	0	0	0	2
Old Dominion	7	0-0	0-0	0-0	0-1	0	1	0	0	0	0
at L. Beach St.	6	2-4	1-2	0-0	1-1	0	1	0	0	2	5

at Pepperdine	7	0-2	0-1	0-0	0-1	0	0	0	0	1	0
at Rutgers	8	0-1	0-0	0-0	0-2	1	1	0	0	0	0
South Carolina	DNP	-	-	-	-	-	-	-	-	-	-
Elon	5	0-3	0-1	0-0	0-0	0	0	0	0	0	0
Kentucky	1	0-0	0-0	0-0	0-0	0	0	0	0	0	0
Louisville	DNP	-	-	-	-	-	-	-	-	-	-
at Ga. Tech	1	0-0	0-0	0-0	0-0	0	0	0	0	0	0
at Florida State	6	1-1	0-0	0-0	1-1	0	0	0	0	0	2
UNC	5	1-2	0-1	0-2	0-0	2	1	0	0	1	2
at NC State	5	1-2	0-1	0-0	1-1	0	0	0	0	0	2
Virginia Tech	6	0-1	0-0	0-0	0-0	1	0	0	0	0	0
at Boston Col.	10	0-2	0-1	0-0	1-1	0	0	3	0	1	0
at Notre Dame	1	0-0	0-0	0-0	0-1	1	0	0	0	0	0
Wake Forest	6	1-3	0-2	0-0	0-0	1	0	0	0	0	2
Clemson	12	1-3	0-2	0-0	1-1	2	1	1	0	1	2
at Virginia	8	0-3	0-2	0-0	0-0	0	1	0	0	0	0
Syracuse	4	0-1	0-0	0-0	1-2	0	0	0	0	0	0
Pitt	13	2-4	1-3	2-2	1-2	1	0	1	0	0	7
at Wake Forest	7	0-0	0-0	0-0	0-2	0	0	0	0	0	0
Miami	3	0-0	0-0	0-0	0-0	0	0	0	0	0	0
at UNC	4	0-0	0-0	0-0	0-0	0	1	0	0	0	0
vs. Syracuse	2	0-0	0-0	0-0	0-0	0	0	0	0	0	0
vs. Miami	2	0-0	0-0	0-0	0-0	0	0	0	0	0	0
vs. Notre Dame	5	0-0	0-0	0-0	0-0	0	0	0	0	0	0
Hampton	13	0-1	0-0	0-0	0-3	1	2	0	0	1	6
Oregon	6	0-1	0-1	0-0	0-0	0	0	0	0	0	0

2015-16 - Freshman Year

	Min	FG-A	3G-A	FT-A	OR/TOT	PFA	T	B	S	SPTS	
at Penn	DNP	-	-	-	-	-	-	-	-	-	-
Winthrop	10	1-4	0-1	1-2	3-4	1	1	1	0	0	3
Texas A&M	3	0-0	0-0	0-0	0-0	1	0	0	0	0	0
Army	4	0-1	0-0	0-0	0-0	1	0	0	0	0	0
vs. Idaho	1	0-0	0-0	1-2	0-0	0	0	0	0	0	1
vs. Iowa State	6	3-4	0-0	0-0	0-1	2	1	0	0	1	6
vs. Texas State	11	0-0	0-0	1-2	0-0	1	0	0	0	0	1
Minnesota	5	0-2	0-1	0-0	0-1	1	0	0	0	0	0
at S.Carolina	DNP	-	-	-	-	-	-	-	-	-	-
UMass	6	1-2	1-2	0-0	0-1	1	0	1	0	0	3
Liberty	5	0-1	0-0	0-0	2-3	0	0	0	0	0	0
at Kentucky	DNP	-	-	-	-	-	-	-	-	-	-
WCU	16	3-4	1-1	1-1	0-3	0	0	2	0	0	8
UNCW	11	0-1	0-0	0-0	0-2	2	0	2	0	0	0
at Syracuse	14	0-1	0-1	3-6	0-2	1	0	1	0	0	3
Wake Forest^	13	2-3	0-0	2-3	1-2	3	1	1	0	2	6
at Louisville	7	0-2	0-1	0-0	2-3	3	0	0	0	1	0
NC State	1	0-0	0-0	0-0	0-0	1	0	0	0	0	0
Boston College	11	1-2	1-2	0-0	1-1	0	0	1	0	0	3
at Clemson	21	1-3	1-2	1-2	1-2	1	0	1	0	0	4
UNC	14	0-4	0-3	0-0	0-2	2	1	0	0	0	0
at Pitt	4	1-1	0-0	0-0	0-0	0	1	0	0	2	2
Notre Dame	4	0-0	0-0	0-0	0-0	2	0	0	0	0	0
Virginia	6	0-0	0-0	0-0	0-0	1	0	0	0	0	0
at Miami	5	0-2	0-2	0-2	1-5	1	0	2	0	0	0
Florida State	9	1-2	0-0	1-1	0-1	0	0	3	0	0	3
at WFU	18	0-6	0-1	1-2	5-8	1	0	1	0	1	1
at Va. Tech	13	2-2	2-2	0-0	0-2	2	1	2	0	0	6
Georgia Tech	2	0-0	0-0	0-0	0-1	1	0	0	0	0	0
at UNC	9	0-1	0-0	0-0	0-0	3	1	1	0	0	0
vs. UVA	10	0-4	0-3	0-0	0-2	1	0	1	0	0	0
vs. Notre Dame	18	3-4	2-3	0-0	0-0	0	1	0	0	2	8

R-Junior Haley Gorecki

2017-18 - Redshirt Sophomore Year

	Min	FG-A	3G-A	FT-A	OR/TOT	PFA	T	B	S	SPTS	
at GCU	7	0-1	0-0	1-2	0-0	0	1	0	0	1	1
High Point	6	0-1	0-1	3-4	0-0	0	0	2	0	2	3
at Villanova	16	2-3	0-1	1-1	0-1	0	0	0	0	0	5
at ODU	14	3-8	3-5	2-2	0-3	1	2	0	0	0	11
Oregon State	17	3-6	1-3	0-0	0-2	1	1	0	0	0	7
Presbyterian	16	1-2	0-1	2-4	1-2	1	4	1	0	0	4

Table with columns: Opponent, FG-A, 3G-A, FT-A, OR/TOT, PFA, T, B, SPTS. Rows include Syracuse, Pitt, Wake Forest, Miami, UNC, etc.

2015-16 - Freshman Year

Table with columns: Opponent, Min FG-A, 3G-A, FT-A, OR/TOT, PFA, T, B, SPTS. Rows include Penn, Winthrop, Texas A&M, Army, etc.

Junior Leonna Odom

2017-18 - Sophomore Year

Table with columns: Opponent, Min FG-A, 3G-A, FT-A, OR/TOT, PFA, T, B, SPTS. Rows include GCU, High Point, Villanova, etc.

2016-17 - Freshman Year

Table with columns: Opponent, Min FG-A, 3G-A, FT-A, OR/TOT, PFA, T, B, SPTS. Rows include Liberty, Penn, Longwood, etc.

Sophomore Jayda Adams

2017-18 - Freshman Year

Table with columns: Opponent, Min FG-A, 3G-A, FT-A, OR/TOT, PFA, T, B, SPTS. Rows include GCU, High Point, Villanova, etc.

R-Sophomore Emily Schubert

2017-18 - Freshman Year

Table with columns: Opponent, Min FG-A, 3G-A, FT-A, OR/TOT, PFA, T, B, SPTS. Rows include GCU, High Point, Villanova, etc.

Table with columns: Opponent, FG-A, 3G-A, FT-A, OR/TOT, PFA, T, B, SPTS. Rows include ODU, Oregon State, Presbyterian, etc.

Sophomore Madison Treece

2017-18 - Freshman Year

Table with columns: Opponent, Min FG-A, 3G-A, FT-A, OR/TOT, PFA, T, B, SPTS. Rows include GCU, High Point, Villanova, etc.

Sophomore Jade Williams

2017-18 - Freshman Year

Table with columns: Opponent, Min FG-A, 3G-A, FT-A, OR/TOT, PFA, T, B, SPTS. Rows include GCU, High Point, Villanova, etc.

Maine	19	0-0	0-0	1-4	2-4	3	0	1	3	1	1
Wyoming	14	4-5	0-0	0-2	2-5	1	1	3	2	0	8
Liberty	9	0-0	0-0	0-0	0-0	5	0	0	0	0	0
at Miami	8	0-2	0-0	0-0	1-2	3	0	1	1	0	0
at Louisville	31	2-5	0-0	0-0	3-6	4	0	1	4	1	4
NC State^	27	3-6	0-1	0-0	1-7	2	1	1	3	2	6
at Wake Forest^	24	3-3	0-0	0-0	0-3	4	0	1	2	0	6
Virginia^	16	2-5	0-0	0-0	2-3	2	1	2	0	0	4
at Va. Tech^	24	2-6	0-0	3-4	1-3	1	3	0	2	0	7
at UNC^	29	3-3	0-0	0-0	0-3	1	2	4	2	0	6
Boston College	12	0-2	0-0	0-0	0-0	1	2	0	0	1	0
at Pittsburgh	5	1-1	0-0	0-1	1-3	3	0	1	0	0	2
Georgia Tech^	31	7-8	0-0	2-6	3-8	3	0	2	6	1	16
Notre Dame^	15	4-8	0-0	0-1	3-3	4	0	2	0	2	8
Wake Forest	13	1-3	0-0	2-4	0-0	1	0	1	1	0	4
at Clemson	15	3-5	0-0	0-0	2-3	1	1	2	1	0	6
at Syracuse	13	1-3	0-0	0-0	0-3	0	1	1	3	0	2
Florida State	30	3-9	0-0	2-2	4-7	1	2	1	0	0	8
North Carolina	23	3-5	0-0	0-0	0-1	2	0	5	2	1	6
vs. NC State	17	0-1	0-0	0-0	2-5	3	0	2	1	0	0
vs. Belmont	7	0-0	0-0	0-0	0-0	2	0	0	0	0	0
at Georgia	9	0-1	0-0	0-0	0-1	1	0	2	0	0	0
vs. UConn	5	3-5	0-0	1-1	0-0	2	0	1	1	0	7

Redshirt Freshman Mikayla Boykin

2017-18 - Freshman Year

	Min	FG-A	3G-A	FT-A	OR/TOT	PF	A	T	B	S	PTS
at GCU^	32	5-13	2-4	0-0	1-3	2	1	1	0	1	12
High Point^	29	0-1	0-1	2-4	1-5	2	7	4	0	3	2
at Villanova^	29	1-7	0-1	1-2	2-2	3	2	4	0	1	3
at ODU^	31	1-10	0-1	2-2	1-3	2	4	0	0	1	4
Oregon State^	31	2-4	2-3	0-0	0-2	1	4	2	0	3	6
Presbyterian^	17	1-4	0-1	0-0	1-3	1	2	1	0	0	2
Ohio State^	22	1-1	0-0	2-2	1-2	2	3	2	0	1	4
at S.Carolina^	17	0-4	0-2	1-2	0-2	0	4	2	0	0	1
UNCG	19	1-4	1-3	2-2	2-3	1	3	2	0	1	5
Winthrop	13	3-5	1-2	0-0	4-7	3	2	2	0	1	7
Maine		DNP - Injured									
Wyoming		DNP - Injured									
Liberty		DNP - Injured									
at Miami		DNP - Injured									
at Louisville		DNP - Injured									
NC State		DNP - Injured									
at Wake Forest		DNP - Injured									
Virginia		DNP - Injured									
at Va. Tech		DNP - Injured									
at UNC		DNP - Injured									
Boston College		DNP - Injured									
at Pittsburgh		DNP - Injured									
Georgia Tech		DNP - Injured									
Notre Dame		DNP - Injured									
Wake Forest		DNP - Injured									
at Clemson		DNP - Injured									
at Syracuse		DNP - Injured									
Florida State		DNP - Injured									
North Carolina		DNP - Injured									
vs. NC State		DNP - Injured									
vs. Belmont		DNP - Injured									
at Georgia		DNP - Injured									
vs. UConn		DNP - Injured									

Other Miscellaneous Statistics...

Defense Force 10-Second Violation Opponent.....-	Largest Duke Lead	Lowest FG% in 1st Quarter Duke.....-
Duke.....-	Largest Duke Deficit	Opp.....-
Defense Force Shot Clock Violation Opponent.....-	Largest Duke Win	Lowest FG% in 2nd Quarter Duke.....-
Duke.....-	Largest Duke Loss	Opp.....-
Defense Force Five-Second Call Opponent.....-	Longest Winning Streak	Lowest FG% in 3rd Quarter Duke.....-
Duke.....-	Longest Losing Streak	Opp.....-
Points In The Paint Opponent.....-	Largest Home Crowd	Lowest FG% in 4th Quarter Duke.....-
Duke.....-	Largest Road Crowd	Opp.....-
Points Off Turnovers Opponent.....-	Highest FG% in 1st Quarter Duke.....-	DUKE Top-Five FG% in Game
Duke.....-	Opp.....-	Top-Five Lowest FG% in Game
Technical Fouls Opponent.....-	Highest FG% in 2nd Quarter Duke.....-	OPPONENT Top-Five FG% in Game
Duke.....-	Opp.....-	Top-Five Lowest FG% in Game
Jump Balls Controlled Opponent.....-	Highest FG% in 3rd Quarter Duke.....-	
Duke.....-	Opp.....-	
Largest Halftime Lead	Highest FG% in 4th Quarter Duke.....-	
Largest Halftime Deficit	Opp.....-	

Duke Records Broken/Tied in 2018-19...

More Duke Numbers, Streaks	
Duke all-time record	907-395
Duke all-time ACC record (regular season only)	380-212
Duke's all-time overtime record	18-13
Consecutive games with at least one three-point FG.....	49
Consecutive games holding opponents under .500 shooting.....	9
Consecutive games holding opponents under 100 points.....	620
Consecutive games scoring at least 70 points	-

Other Miscellaneous Statistics Part II...

Date	Opponent	Result	Largest Lead				Paint		Off TOs		2nd Chance		Fastbreak		Rebounds		O. Rebounds		Bench Pts	
			Duke	Opp	Ties	LC	Duke	Opp	Duke	Opp	Duke	Opp	Duke	Opp	Duke	Opp	Duke	Opp	Duke	Opp
11/11	at Northwestern																			
11/15	at Maine																			
11/18	Elon																			
11/23	vs. Washington																			
11/24	TBA																			
11/25	TBA																			
11/28	at Wisconsin																			
12/2	Marist																			
12/6	UNLV																			
12/9	South Carolina																			
12/20	at Oregon State																			
12/28	East Carolina																			
12/30	Florida Gulf Coast																			
1/3	at NC State																			
1/6	Louisville																			
1/10	at Georgia Tech																			
1/17	Miami																			
1/20	at Florida State																			
1/24	Wake Forest																			
1/27	Syracuse																			
1/31	at Boston College																			
2/3	Pittsburgh																			
2/7	at North Carolina																			
2/10	at Virginia																			
2/14	Virginia Tech																			
2/21	at Notre Dame																			
2/24	at Wake Forest																			
2/28	Clemson																			
3/3	North Carolina																			
		TOTAL:																		
		AVG:																		

Other Miscellaneous Statistics (Season/Career)...

Player	Individual Game Leaders										
	10+ Pts.	20+ Pts.	10+ Reb.	10+ Assists	3-Pt. Plays	Double-Doubles	Charges	First Sub	Points	Rebounds	Assists
J. Adams	-/-	-/-	-/-	-/-	-/-	-/-	-/-	6/6	-/-	-/-	-/-
O. Akinbode-James	-/-	-/-	-/-	-/-	-/-	-/-	-/-	-/-	-/-	-/-	-/-
M. Boykin	-/1	-/-	-/-	-/-	-/-	-/-	-/2	-/2	-/-	-/1	-/3
R. Craig	-/-	-/-	-/-	-/-	-/-	-/-	-/-	-/-	-/-	-/-	-/-
M. Goodchild	-/-	-/-	-/-	-/-	-/-	-/-	-/-	-/-	-/-	-/-	-/-
H. Gorecki	-/12	-/4	-/1	-/-	-/3	-/1	-/2	-/5	-/4	-/2	-/9
K. Lambert	-/17	-/-	-/-	-/1	-/9	-/1	-/9	-/6	-/2	-/4	-/24
U. Nwoke	-/-	-/-	-/-	-/-	-/-	-/-	-/-	-/-	-/-	-/-	-/-
L. Odom	-/25	-/3	-/7	-/-	-/4	-/4	-/4	-/21	-/4	-/21	-/3
S. Roma	-/-	-/-	-/-	-/-	-/1	-/-	-/-	-/-	-/-	-/-	-/-
E. Schubert	-/-	-/-	-/-	-/-	-/-	-/-	-/-	-/-	-/-	-/-	-/-
F. Suggs	-/-	-/-	-/-	-/-	-/5	-/-	-/5	-/1	-/-	-/3	-/-
M. Treece	-/-	-/-	-/-	-/-	-/1	-/-	-/-	-/-	-/-	-/-	-/-
J. Williams	-/1	-/-	-/-	-/-	-/1	-/-	-/-	-/10	-/-	-/1	-/1

The Last Time it Happened...

Team

Individual

100 Points by a Team

By Duke 105 vs. Longwood (11/15/16)
 By Opponent 104 by Connecticut (11/13/98)

30-Point Win

By Duke 101-30 vs. Winthrop (12/10/17)
 By Opponent 86-50 by Syracuse (1/3/16)

65 Percent Shooting by a Team

By Duke 650 vs. Texas State (11/28/15)
 By Opponent 655 by Virginia (1/25/94)

60 Percent Shooting by a Team

By Duke 615 at Long Beach State (11/25/16)
 By Opponent 618 by Notre Dame (2/2/14)

50 Percent Shooting by a Team

By Duke 500 vs. Georgia (3/19/18)
 By Opponent 517 by Notre Dame (3/5/17)

Five Starters in Double-Digit Scoring

By Duke at Grand Canyon (11/12/17)
 By Opponent by Connecticut (12/29/14)

30 or More Turnovers

By Duke 32 at Syracuse (1/3/16)
 By Opponent 34 by Longwood (11/15/16)

Held to Less Than 10 Points in First Half

Duke --
 Opponent 3 by Monmouth (12/30/12)

Duke Played a Ranked Opponent

Duke Win 66-40 vs. [18/17] Georgia (3/19/18)
 Duke Loss 72-59 vs. [1/1] UConn (3/24/18)

Overtime Game

Duke Win 74-67 at [12/11] North Carolina (1/25/15)
 Duke Loss 86-92 at North Carolina (1/21/18)

Home Openers

Duke Win 77-50 vs. High Point (11/16/17)
 Duke Loss 82-57 vs. UNC Greensboro (12/1/77)

Road/Neutral Openers

Duke Win 74-61 at Grand Canyon (11/12/17)
 Duke Loss 76-65 vs. [11] Notre Dame (11/17/04)

Duke Was Ranked

AP Number 1 March 12, 2007
 USA Today/ESPN Number 1 March 13, 2007
 AP Top 10 March 13, 2017 -- No. 9
 AP Top 25 March 12, 2018 - No. 20

40 Points by a Player

By Duke 43, Monique Currie at Miami (2/19/06)
 By Opponent 41, Jackie Stiles SW Missouri State (3/24/01)

30 Points by a Player

By Duke 30, Lexie Brown vs. Florida State (2/19/18)
 By Opponent 36, Paris Kea, North Carolina (1/21/18)

20 Rebounds by a Player

By Duke 20, Lexie Brown vs. Penn (11/13/16)
 By Opponent 22, Chelsea Nelson, NC State (3/2/18)

15 Rebounds by a Player

By Duke 15, Azurá Stevens vs. Notre Dame (3/4/16)
 By Opponent 15, Chelsea Nelson, NC State (1/7/18)

Two Players with 20 or More Points in Same Game

By Duke . Rebecca Greenwell [31] & Lexie Brown [22], North Carolina (2/25/18)
 By Opponent... Paris Kea [36] & Jamie Cherry [22], North Carolina (1/21/18)

Three Players with 20 or More Points in Same Game

By Duke.. I. Tillis [23], M. Bass [21] & A. Beard [20] vs. Stephen F. Austin (11/29/03)

Two Players with 10 or More Rebs. in Same Game

By Duke Leonna Odom [11] & Haley Gorecki [10], Maine (12/19/17)
 By Opponent. A'Ja Wilson [11] & Alexis Jennings [10], South Carolina (12/3/17)

Three Players with 10 or More Rebs. in Same Game

By Duke R. Greenwell [14], K. Johnson [13] & E. Williams [10] at UNC (1/25/15)
 By Opponent... N. Bryant [12], H. Summers [11] & S. Watts [10], UNC (1/24/16)

10 Assists by a Player

By Duke 13, Kyra Lambert at North Carolina (2/26/17)
 By Opponent 13, Lindsay Allen, Notre Dame (3/5/17)

10 Steals by a Player

By Duke 10 by Alexis Jones vs. Notre Dame (2/2/14)
 By Opponent None

Five Steals by a Player

By Duke 8, Lexie Brown at Miami (12/31/17)
 By Opponent 5, Emma Bockrath, High Point (11/16/17)

Five Blocked Shots by a Player

By Duke 6, Jade Williams vs. Georgia Tech (2/1/18)
 By Opponent 5, Natasha Howard, Florida State (1/23/14)

Double-Double by a Player

By Duke . Rebecca Greenwell [31/13 rebounds] vs. North Carolina (2/25/18)
 By Opponent..... A'Ja Wilson [18/11 rebounds], South Carolina (12/3/17)

Triple-Double by a Player

By Duke .. Ka'lia Johnson (18 pts., 11 rbs., 13 ast.) at Old Dominion (11/16/14)
 By Opponent..... none

The Blue Devils' Record When

- At home _____
- On the road _____
- At a neutral site _____
- Against a top 25 opponent _____
- Against a top 10 opponent _____
- Against a top 5 opponent _____

- In tournaments _____
- On television _____
- In white uniforms _____
- In blue uniforms _____
- In black uniforms _____
- In blue/pink uniforms _____
- In white/pink uniforms _____

- On Sunday _____
- On Monday _____
- On Tuesday _____
- On Wednesday _____
- On Thursday _____
- On Friday _____
- On Saturday _____
- Day Games _____
- Night Games _____
- Overtime Games _____

- When the starters are: _____

- Leading at the half _____
- Trailing at the half _____
- Tied at the half _____

- Outrebounding opponent _____
- Opponent outrebounds Duke _____
- Equal rebounds _____
- FG% equal/over .500 _____
- FG% equal/over .400 _____
- FG% below .400 _____
- Opponent FG% equal/over .400 _____
- Opponent FG% below .400 _____

- Duke has more turnovers _____
- Opponent has more turnovers _____
- Teams have equal turnovers _____
- Scoring below 50 points _____
- Scoring 50-59 points _____
- Scoring 60-69 points _____
- Scoring 70-79 points _____
- Scoring 80-89 points _____
- Scoring 90-99 points _____
- Scoring 100+ points _____

- When leading after 3rd period _____
- When leading w/ 5 minutes left _____
- When trailing after 3rd period _____
- When trailing w/ 5 minutes left _____
- When tied w/ 5 minutes left _____

Duke Quarter Records - Team

Most Points Scored - 1st Quarter

1. 33 vs. Longwood, 11-15-16
2. 29 vs. Pepperdine, 11-27-16
3. 28 vs. Winthrop, 12-10-17
- 28 vs. Old Dominion, 11-22-16
5. 27 vs. Winthrop, 11-15-15
- 27 vs. Texas State, 11-28-15
7. 26 vs. Penn, 11-13-16
- 26 vs. Ohio State, 11-30-17
9. 25 vs. Minnesota, 12-13-15
- 25 vs. Western Carolina, 12-29-15

Most Points Scored - 2nd Quarter

1. 31 vs. Hampton, 3-18-17
2. 30 at North Carolina, 2-28-16
3. 29 vs. Liberty, 12-17-15
4. 27 at Pepperdine, 11-27-16
5. 26 vs. Iowa State, 11-27-15
- 26 vs. Georgia Tech, 2-1-18
7. 24 vs. North Carolina, 1-24-16
- 24 at Liberty, 11-11-16
- 24 vs. Winthrop, 12-10-17
10. 23 vs. Virginia, 2-4-16

Most Points Scored - 3rd Quarter

1. 34 vs. Wake Forest, 1-7-16
2. 32 vs. Virginia Tech, 1-19-17
3. 31 at Virginia Tech, 1-18-18
4. 29 vs. Old Dominion, 11-22-16
- 29 at Wake Forest, 2-16-17
6. 28 vs. Hampton, 3-18-17
7. 27 at Long Beach State, 11-25-16
8. 25 at Miami, 2-7-16
- 25 vs. Miami, 2-19-17
- 25 vs. Wyoming, 12-21-17

Most Points Scored - 4th Quarter

1. 32 at North Carolina, 2-26-17
2. 29 vs. Iowa State, 11-27-15
- 29 vs. Winthrop, 12-10-17
4. 28 vs. Connecticut, 3-24-18
5. 27 at Liberty, 11-11-16
- 27 vs. Longwood, 11-15-16
7. 26 vs. Miami, 2-19-17
8. 25 at Old Dominion, 11-22-17
9. 24 vs. Boston College, 1-17-16
- 24 vs. Grand Canyon, 11-17-16

Fewest Points Scored - 1st Quarter

1. 8 at Louisville, 1-10-16
2. 9 at Miami, 2-7-16
- 9 at Florida State, 1-8-17
4. 10 vs. Georgia Tech, 2-21-16
- 10 vs. Miami, 3-4-17
- 10 vs. Wake Forest, 2-7-18
7. 11 at Penn, 11-13-15
- 11 vs. Notre Dame, 3-4-16
- 11 at Boston College, 1-22-17
- 11 vs. Virginia, 1-14-18

Fewest Points Scored - 2nd Quarter

1. 2 at Louisville, 1-10-16
2. 2 at Miami, 2-7-16
3. 4 vs. NC State, 3-2-18
4. 6 at Florida State, 1-8-17
- 6 at NC State, 1-15-17
- 6 vs. Connecticut, 3-24-18
7. 8 vs. Louisville, 1-2-17
8. 9 vs. Texas A&M, 11-18-15
- 9 at Louisville, 1-10-16
- 9 vs. Penn, 11-13-16

Fewest Points Scored - 3rd Quarter

1. 8 at Villanova, 11-19-17
2. 9 at Louisville, 1-4-18
3. 10 at South Carolina, 12-03-17
4. 11 at Notre Dame, 1-26-17
- 11 vs. Notre Dame, 3-4-16
- 11 vs. Miami, 12-31-17
- 11 at Pittsburgh, 1-28-18
- 11 vs. Connecticut, 3-24-18
9. 12 vs. Kentucky, 12-29-16
- 12 at Florida State, 1-8-17

Fewest Points Scored - 4th Quarter

1. 5 at Syracuse, 1-3-16
2. 8 vs. Liberty, 12-29-17
- 8 vs. Notre Dame, 2-4-18
4. 9 vs. Syracuse, 2-10-17
5. 10 vs. Miami, 12-31-17
- 10 vs. NC State, 3-2-18
7. 11 vs. Virginia, 2-4-16
- 11 at Rutgers, 12-1-16
- 11 at Virginia, 2-5-17
- 11 vs. Pittsburgh, 2-12-17

Highest FG Percentage - 1st Quarter

1. 80 at Louisville, 1-4-18
2. 75 vs. Western Carolina, 12-29-15
3. 72.7 at Long Beach State, 11-25-16
4. 69.2 vs. Villanova, 12-21-16
5. 66.7 vs. Virginia, 2-4-16
- 66.7 vs. Winthrop, 12-10-17
7. 64.7 vs. Minnesota, 12-3-15
- 64.7 vs. Syracuse, 3-3-17
9. 63.2 vs. Texas State, 11-28-15
10. 62.5 at North Carolina, 2-28-16

Highest FG Percentage - 2nd Quarter

1. 72.7 vs. Liberty, 12-29-17
2. 66.7 vs. UNCW, 12-31-15
- 66.7 vs. Clemson, 2-2-17
- 66.7 vs. Hampton, 3-18-17
- 66.7 at North Carolina, 1-21-18
6. 64.7 vs. Georgia Tech, 2-1-18
7. 63.6 vs. Kentucky, 12-29-16
- 63.6 at Louisville, 1-4-18
- 63.6 vs. Georgia, 3-19-18
10. 63.2 vs. Iowa State, 11-27-15

Highest FG Percentage - 3rd Quarter

1. 81.3 at Virginia Tech, 1-18-18
2. 80 at Virginia Tech, 2-18-16
3. 75 vs. Western Carolina, 12-29-15
- 75 at Long Beach State, 11-25-16
5. 71.4 at Miami, 2-7-16
- 71.4 vs. Virginia Tech, 1-19-17
7. 70.6 vs. Wake Forest, 1-7-16
8. 70 at Rutgers, 12-1-16
9. 68.8 vs. North Carolina, 2-25-18
10. 66.7 vs. Old Dominion, 11-22-16

Highest FG Percentage - 4th Quarter

1. 86.7 at North Carolina, 2-26-17
2. 77.8 vs. Georgia Tech, 2-1-18
3. 75 vs. Texas State, 11-28-15
4. 73.3 vs. Winthrop, 12-10-17
5. 72.7 vs. Hampton, 3-18-17
- 72.7 vs. Presbyterian, 11-26-17
7. 70 at Wake Forest, 2-14-16
- 70 vs. Maine, 12-19-17
9. 66.7 at Liberty, 11-11-16
- 66.7 at Georgia Tech, 1-5-17

Lowest FG Percentage - 1st Quarter

1. 21.4 vs. Wake Forest, 2-7-18
2. 23.5 at Miami, 2-7-16
3. 25 vs. Miami, 3-4-17
4. 26.3 vs. Notre Dame, 2-4-18
5. 26.7 vs. Notre Dame, 3-4-16
6. 27.8 at Clemson, 2-11-18
7. 28.6 vs. Virginia, 1-14-18
8. 30 vs. Oregon, 3-20-17
- 30 vs. Belmont, 3-17-18
10. 30.8 at Penn, 11-13-15

Lowest FG Percentage - 2nd Quarter

1. 0 at Miami, 2-7-16
2. 7.1 vs. NC State, 3-2-18
3. 15.4 at FSU, 1-8-17
- 15.4 at NC State, 1-15-17
5. 17.6 at Wake Forest, 2-14-16
6. 18.8 at Notre Dame, 1-26-17
7. 20 vs. Notre Dame, 3-5-17
8. 23.1 vs. Connecticut, 3-24-18
9. 25 vs. Texas A&M, 11-18-15
- 25 vs. Penn 11-13-16

Lowest FG Percentage - 3rd Quarter

1. 21.4 at Louisville, 1-4-18
2. 25 at Clemson, 2-11-18
3. 27.3 vs. Virginia, 3-3-16
4. 27.8 vs. Notre Dame, 3-4-16
- 27.8 at South Carolina, 12-3-17
- 27.8 vs. Connecticut, 3-24-18
7. 29.4 at Louisville, 1-10-16
8. 30.8 vs. Ohio State, 11-30-17
9. 31.3 vs. Maine, 12-19-17
10. 33.3 at South Carolina, 12-6-15

Lowest FG Percentage - 4th Quarter

1. 18.2 vs. Notre Dame, 2-4-18
2. 20 vs. Virginia, 3-3-16
- 20 at Wake Forest, 1-11-18
4. 21.4 at Miami, 2-7-16
5. 22 at Florida State, 1-8-17
6. 22.2 at Syracuse, 1-3-16
7. 23.1 vs. Elon, 12-8-16
8. 25 vs. NC State, 3-2-18
9. 26.1 vs. Florida State, 2-19-18
10. 26.7 vs. Pittsburgh, 2-12-17

Duke Quarter Records - Opponents

Most Points Scored - 1st Quarter

1. 30 Syracuse, 1-3-16
2. 27 Notre Dame, 3-15-17
3. 26 Louisville, 1-14-18
4. 25 Wake Forest, 1-7-16
5. 24 NC State, 1-15-17
6. 23 Army, 11-22-15
7. 22 Notre Dame, 2-1-16
- 22 Georgia Tech, 1-5-17
9. 21 Virginia Tech, 1-19-17
10. 20 Vanderbilt, 11-20-16

Most Points Scored - 2nd Quarter

1. 25 Notre Dame, 3-4-16
2. 24 North Carolina, 1-24-16
- 24 Georgia Tech, 2-21-18
4. 23 Syracuse, 2-15-18
5. 22 North Carolina, 1-21-18
6. 20 Virginia Tech, 2-18-16
- 20 South Carolina, 12-3-17
- 20 NC State, 1-17-18
- 20 Notre Dame, 2-4-18
- 20 Connecticut, 3-24-18

Most Points Scored - 3rd Quarter

1. 26 Syracuse, 1-3-16
2. 26 Villanova, 11-19-17
- 25 Pennsylvania, 11-13-15
4. 23 Boston College, 1-17-16
- 23 Notre Dame, 3-4-16
- 23 Oregon State, 11-25-17
7. 22 Idaho, 11-26-15
- 22 Vanderbilt, 11-20-16
- 22 Oregon, 3-20-17
10. 21 Texas A & M, 11-18-15

Most Points Scored - 4th Quarter

1. 26 Wake Forest, 2-4-16
2. 24 Elon, 12-8-16
- 24 Florida State, 1-8-17
4. 23 Notre Dame, 2-1-16
- 23 North Carolina, 2-26-17
6. 22 Army, 11-22-15
- 22 Miami, 2-19-17
8. 21 Georgia Tech, 2-21-16
- 21 Notre Dame, 3-4-16
- 21 Georgia Tech, 1-5-17

Fewest Points Scored - 1st Quarter

1. 4 Pennsylvania, 11-13-15
2. 5 Georgia Tech, 2-21-16
- 5 Rutgers, 12-1-16
- 5 Winthrop, 12-10-17
- 5 NC State, 1-7-18
6. 6 Old Dominion, 11-22-17
7. 7 Texas State, 11-28-15
- 7 Villanova, 12-21-16
- 7 Pittsburgh, 1-28-18
10. 8 Boston College, 1-7-16

Fewest Points Scored - 2nd Quarter

1. 2 Hampton, 3-18-17
- 2 Georgia, 3-19-18
3. 4 Texas State, 11-28-15
- 4 Longwood, 11-15-16
- 4 North Carolina, 1-12-17
- 6.. 5 Liberty, 12-17-15
- 5 Virginia, 1-14-18
8. 6 Liberty, 11-11-16
- 6 Clemson, 2-11-18
10. 7 UNC-Wilmington 12-31-15

Fewest Points Scored - 3rd Quarter

1. 5 Army, 11-22-15
- 5 Wake Forest, 2-14-16
- 5 NC State, 3-2-18
4. 6 UMass, 12-14-15
- 6 North Carolina, 1-24-16
- 6 Virginia, 2-5-16
7. 7 North Carolina, 2-25-18
8. 8 NC State, 1-15-17
- 8 UNC-Greensboro, 12-7-17
- 8 Winthrop, 12-10-17

Fewest Points Scored - 4th Quarter

1. 2 Liberty, 11-11-16
2. 6 Winthrop, 11-15-15
3. 7 Virginia, 2-4-16
- 7 Boston College, 1-22-17
- 7 Syracuse, 3-3-17
6. 8 Rutgers, 12-1-16
- 8 Presbyterian, 11-26-17
- 8 Ohio State, 11-30-17
9. 9 Pennsylvania, 11-13-15
- 9 Iowa State, 11-27-15

Highest FG Percentage - 1st Quarter

1. 70-Virginia, 1-14-18
2. 64.3-Wake Forest, 1-7-16
- 64.3-Notre Dame, 3-5-17
4. 63.6-Pittsburgh, 1-28-16
5. 63.2-Syracuse, 1-3-16
6. 60-NC State, 1-15-17
7. 58.3-Army, 11-22-15
- 58.3-Longwood, 11-15-16
- 58.3-Florida State, 2-19-18
10. 57.1-Wake Forest, 1-11-18

Highest FG Percentage - 2nd Quarter

1. 63.6-Louisville, 11-4-18
- 63.6-Notre Dame, 2-4-18
3. 60-South Carolina, 12-6-15
4. 58.3-Kentucky, 12-29-16
5. 53.8-Minnesota, 12-3-15
6. 53.3-North Carolina, 1-21-18
7. 52.6-Georgia Tech, 2-21-16
8. 50-Wake Forest, 2-14-16
- 50-Notre Dame, 3-4-16
- 50-Virginia, 2-5-16

Highest FG Percentage - 3rd Quarter

1. 71.4-Boston College, 1-17-16
2. 64.3-Pennsylvania, 11-13-15
3. 63.6-Notre Dame, 2-4-18
4. 61.5-North Carolina, 1-12-17
- 61.5-Louisville, 1-2-17
6. 58.8-Oregon, 3-20-17
7. 57.1-Vanderbilt, 11-20-16
- 57.1-Old Dominion, 11-22-16
9. 56.3-Villanova, 11-19-17
10. 53.3-Grand Canyon, 11-12-17

Highest FG Percentage - 4th Quarter

1. 72.7-Notre Dame, 3-5-17
2. 63.6-Syracuse, 2-15-18
3. 61.5-Notre Dame, 2-1-16
4. 60-Connecticut, 3-24-18
5. 58.8-Notre Dame, 3-4-16
- 58.8-Florida State, 1-8-17
7. 58.3-South Carolina, 12-6-15
8. 57.1-Elon, 12-8-16
9. 55.6-Syracuse, 1-3-16
10. 53.8-Miami, 3-4-17

Lowest FG Percentage - 1st Quarter

1. 5.9-Georgia Tech, 2-21-16
2. 11.8-Pennsylvania, 11-13-15
3. 13.3-Winthrop, 12-10-17
4. 14.3-NC State, 1-7-18
5. 15.4-Rutgers, 12-1-16
- 15.4-Old Dominion, 11-22-17
7. 15.8-Villanova, 12-21-16
8. 17.6-Villanova, 11-19-17
9. 20-Hampton, 3-18-17
10. 21.1-Syracuse, 2-10-17

Lowest FG Percentage - 2nd Quarter

1. 5.3-Georgia, 3-19-18
2. 6.3-Liberty, 11-11-16
3. 7.1-North Carolina, 1-12-17
- 7.1-Hampton, 3-18-17
5. 8.3-Texas State, 11-28-15
6. 10-Wake Forest, 1-29-17
7. 12.5-Liberty, 12-17-15
8. 14.3-Long Beach State, 11-25-16
9. 15-Liberty, 12-29-17
10. 15.4-Longwood- 11-15-16

Lowest FG Percentage - 3rd Quarter

1. 8.3-Army, 11-22-15
2. 11.1-Maine, 12-19-17
3. 11.8-North Carolina, 1-24-16
4. 12.5-NC State, 3-2-18
5. 13.3-Wake Forest, 2-14-16
6. 16.7-Boston College, 1-22-17
7. 17.6-Western Carolina, 12-29-15
- 17.6-Notre Dame, 2-1-16
- 17.6-Hampton, 3-18-17
10. 18.2-UMass, 12-14-15

Lowest FG Percentage - 4th Quarter

1. 0-Liberty, 11-11-16
2. 5.9-Winthrop, 11-15-15
3. 10.5-Syracuse, 2-10-17
4. 11.8-Syracuse 3-3-17
5. 15-Maine, 12-19-17
6. 15.4-High Point, 11-16-17
7. 16.7-Liberty, 12-17-15
- 16.7-Iowa State, 11-27-15
9. 17.6-Kentucky, 12-29-16
10. 21.4-Pennsylvania, 11-13-15

Duke Quarter Records - Individual

Most Points Scored - 1st Quarter

1. 14 Rebecca Greenwell vs. Wake Forest, 1-7-16
- 14 Lexie Brown vs. Longwood, 11-15-16
- 14 Lexie Brown vs. Boston College, 1-25-18
4. 13 Lexie Brown vs. Ohio State, 11-30-17
- 13 Lexie Brown at Georgia Tech, 1-5-17
6. 12 Lexie Brown at Notre Dame, 1-26-17
- 12 Rebecca Greenwell at Grand Canyon, 11-12-17
8. 11 Rebecca Greenwell vs. Winthrop, 11-15-15
- 11 Rebecca Greenwell vs. Texas A&M, 11-18-15
- 11 Azura Stevens vs. Army, 11-22-15

Most Points Scored - 2nd Quarter

1. 13 Haley Gorecki at Louisville, 1-4-18
- 13 Lexie Brown at Wake Forest, 1-11-18
3. 12 Azura Stevens vs. Idaho, 11-26-15
- 12 Rebecca Greenwell at North Carolina, 2-28-16
- 12 Lexie Brown vs. Old Dominion, 11-22-16
- 12 Lexie Brown vs. Winthrop, 12-10-17
7. 11 Rebecca Greenwell vs. Villanova, 12-21-16
- 11 Lexie Brown vs. Notre Dame, 3-5-17
- 11 Rebecca Greenwell vs. Presbyterian, 11-26-17
- 11 Jade Williams vs. Georgia Tech, 2-1-18

Most Points Scored - 3rd Quarter

1. 15 Rebecca Greenwell vs. North Carolina, 2-25-18
2. 14 Lexie Brown vs. Florida State, 2-19-18
3. 12 Lexie Brown vs. Long Beach State, 11-25-16
- 12 Rebecca Greenwell vs. Oregon State, 11-25-17
- 12 Lexie Brown vs. Wyoming, 12-21-17
- 12 Haley Gorecki at Virginia Tech, 1-18-18
7. 11 Azura Stevens vs. Wake Forest, 1-7-16
- 11 Oderah Chidom at Miami, 2-7-16
- 11 Rebecca Greenwell vs. Old Dominion, 11-22-16
- 11 Lexie Brown vs. Virginia Tech, 1-19-17

Most Points Scored - 4th Quarter

1. 14 Rebecca Greenwell vs. Boston College, 1-17-16
2. 13 Rebecca Greenwell vs. Longwood, 11-15-16
3. 12 Kyra Lambert vs. Notre Dame, 3-4-16
- 12 Lexie Brown at Old Dominion, 11-22-17
5. 11 Rebecca Greenwell vs. South Carolina, 12-4-16
6. 10 Leaonna Odom vs. Grand Canyon, 11-17-16
- 10 Rebecca Greenwell vs. Miami, 2-19-17
- 10 Lexie Brown vs. Oregon State, 11-25-17
- 10 Lexie Brown at Pittsburgh, 1-28-18
10. 9 Rebecca Greenwell vs. North Carolina, 1-24-16

Most Rebounds - 1st Quarter

1. 6 Oderah Chidom at Pennsylvania, 11-13-15
- 6 Rebecca Greenwell vs. Notre Dame, 2-4-18
- 6 Bego Fax Dalvalos at Clemson, 2-11-18
4. 5 Amber Henson vs. North Carolina, 1-24-16
- 5 Oderah Chidom vs. Notre Dame, 2-1-16
- 5 Oderah Chidom vs. Notre Dame, 3-4-16
- 5 Rebecca Greenwell at Grand Canyon, 11-12-17
- 5 Rebecca Greenwell vs. Syracuse, 2-10-17
- 5 Leaonna Odom vs. Pittsburgh, 2-12-17
- 5 Rebecca Greenwell at Old Dominion, 11-22-17

Most Rebounds - 2nd Quarter

1. 7 Azura Stevens vs. Western Carolina, 12-29-15
- 6 Azura Stevens at Syracuse, 1-3-16
- 6 Azura Stevens vs. North Carolina, 1-24-16
- 6 Faith Suggs at Wake Forest, 2-14-16
- 6 Erin Mathias at Grand Canyon, 11-12-17
- 6 Erin Mathias at Georgia, 3-19-18
7. 5 Azura Stevens vs. Minnesota, 12-3-15
- 5 Rebecca Greenwell vs. Virginia, 2-4-16
- 5 Azura Stevens vs. Virginia, 3-3-16
- 5 Oderah Chidom vs. Notre Dame, 3-4-16

Most Rebounds - 3rd Quarter

1. 8 Amber Henson vs. North Carolina, 1-24-16
2. 7 Azura Stevens vs. Winthrop, 11-15-15
3. 6 Oderah Chidom vs. Virginia, 3-3-16
4. 5 Kendall Cooper vs. Idaho, 11-26-15
- 5 Amber Henson vs. Notre Dame, 2-1-16
- 5 Amber Henson at North Carolina, 2-28-16
- 5 Leaonna Odom at Pepperdine, 11-27-16
- 5 Oderah Chidom vs. Notre Dame, 3-5-17
- 5 Rebecca Greenwell at Syracuse, 2-15-18
- 5 Rebecca Greenwell vs. North Carolina, 2-25-18

Most Rebounds - 4th Quarter

1. 7 Leaonna Odom vs. Florida State, 2-19-18
2. 6 Azura Stevens vs. Texas A&M, 11-18-15
- 6 Azura Stevens vs. Army, 11-22-15
- 6 Azura Stevens vs. UMass, 12-14-15
5. 5 Oderah Chidom vs. Iowa State, 11-27-15
- 5 Oderah Chidom vs. Pennsylvania, 11-13-16
- 5 Erin Mathias vs. Grand Canyon, 11-17-16
- 5 Oderah Chidom at Long Beach State, 11-25-16
9. 4 Erin Mathias vs. Winthrop, 11-15-15
- 4 Lynee Belton vs. Western Carolina, 12-29-15

Most Assists - 1st Quarter

1. 5 Lexie Brown at Pepperdine, 11-27-16
- 5 Lexie Brown vs. Syracuse, 2-10-17
3. 4 Angela Salvadores vs. Texas State, 11-28-15
- 4 Rebecca Greenwell vs. Minnesota, 12-3-15
- 4 Kyra Lambert vs. Old Dominion, 11-22-16
- 4 Kyra Lambert at Rutgers, 12-1-16
- 4 Lexie Brown vs. Hampton, 3-18-17
- 4 Lexie Brown vs. UNC-Greensboro, 12-7-17
9. 3 Kyra Lambert vs. Texas A&M, 11-18-15
- 3 Rebecca Greenwell vs. WCU, 12-29-15

Most Assists - 2nd Quarter

1. 5 Kyra Lambert at North Carolina, 2-28-16
- 5 Lexie Brown at Clemson, 2-11-18
3. 4 Angela Salvadores vs. Liberty, 12-17-15
- 4 Lexie Brown at Old Dominion, 11-22-17
- 4 Lexie Brown vs. Georgia Tech, 2-1-18
6. 3 Angela Salvadores vs. Iowa State, 11-27-15
- 3 Rebecca Greenwell at Liberty, 11-11-16
- 3 Kyra Lambert at Pepperdine, 11-27-16
- 3 Haley Gorecki vs. Liberty 12-29-17
10. 2 Angela Salvadores vs. Winthrop, 11-15-15

Most Assists - 3rd Quarter

1. 5 Lexie Brown vs. North Carolina, 2-25-18
2. 4 Lexie Brown at Pepperdine, 11-27-16
- 4 Lexie Brown at Wake Forest, 2-16-17
- 4 Lexie Brown at Grand Canyon, 11-12-17
- 4 Lexie Brown at Louisville, 1-4-18
- 4 Jade Williams at Louisville, 1-4-18
7. 3 Angela Salvadores vs. Idaho, 11-26-15
- 3 Angela Salvadores vs. Minnesota, 12-3-15
- 3 Kyra Lambert at Long Beach State, 11-25-16
- 3 Rebecca Greenwell at Rutgers, 12-1-16

Most Assists - 4th Quarter

1. 8 Kyra Lambert at North Carolina, 2-26-17
2. 4 Kyra Lambert vs. Boston College, 1-17-16
3. 3 Leaonna Odom at Louisville, 1-4-18
- 3 Lexie Brown vs. North Carolina, 2-25-18
- 3 Lexie Brown vs. Connecticut, 3-24-18
6. 2 Angela Salvadores vs. Army, 11-22-15
- 2 Lynee Belton vs. Iowa State, 11-27-15
- 2 Kendall Cooper vs. Texas State, 11-28-15
- 2 Angela Salvadores vs. Texas State, 11-28-15
- 2 Angela Salvadores vs. Minnesota, 12-3-15

Most Blocks - 1st Quarter

1. 3 Oderah Chidom vs. Boston College, 1-17-16
- 3 Oderah Chidom at Vanderbilt, 11-27-16
- 3 Kendall Cooper vs. Pittsburgh, 2-12-17
4. 2 Amber Henson vs. Winthrop, 11-15-15
- 2 Azura Stevens at South Carolina, 12-6-15
- 2 Amber Henson vs. North Carolina, 1-24-16
- 2 Oderah Chidom vs. Virginia, 2-4-16
- 2 Amber Henson vs. Georgia Tech, 2-21-16
- 2 Azura Stevens vs. Virginia, 3-3-16
- 2 Oderah Chidom vs. Notre Dame, 3-4-16

Most Blocks - 2nd Quarter

1. 4 Jade Williams vs. Georgia Tech, 2-1-18
2. 3 Lexie Brown vs. Longwood, 11-15-16
- 3 Oderah Chidom vs. North Carolina, 1-12-17
- 3 Erin Mathias vs. Virginia Tech, 1-18-18
5. 2 Kendall Cooper vs. Idaho, 11-26-15
- 2 Azura Stevens vs. UMass, 12-14-15
- 2 Oderah Chidom vs. Notre Dame, 3-4-16
- 2 Erin Mathias at Wake Forest, 2-16-17
- 2 Oderah Chidom at Liberty, 11-11-16
- 2 Leaonna Odom vs. Wyoming, 12-21-17

Most Blocks - 3rd Quarter

1. 3 Amber Henson vs. Virginia, 2-4-16
- 3 Oderah Chidom at Liberty, 11-11-16
- 3 Oderah Chidom at Long Beach State, 11-25-16
- 3 Kendall Cooper at Pepperdine, 11-27-16
5. 2 Azura Stevens vs. Winthrop, 11-15-15
- 2 Azura Stevens vs. Iowa State, 11-27-15
- 2 Oderah Chidom vs. Western Carolina, 12-29-15
- 2 Rebecca Greenwell vs. Wake Forest, 1-7-16
- 2 Amber Henson vs. Wake Forest, 1-7-16
- 2 Azura Stevens vs. Boston College, 1-17-16

Most Blocks-4th Quarter

1. 2 Azura Stevens vs. Winthrop, 11-15-15
- 2 Amber Henson vs. Winthrop, 11-15-15
- 2 Azura Stevens at Clemson, 1-21-16
- 2 Oderah Chidom vs. Georgia Tech, 2-21-16
- 2 Oderah Chidom at North Carolina, 2-28-16
- 2 Oderah Chidom at Pepperdine, 11-27-16
- 2 Oderah Chidom at Georgia Tech, 1-5-17
- 2 Kendall Cooper at Florida State, 1-8-17
- 2 Kendall Cooper vs. Oregon, 3-20-17
- 2 Jade Williams vs. Maine, 12-19-17

Most Steals - 1st Quarter

1. 3 Kyra Lambert at Liberty, 11-11-16
- 3 Leaonna Odom vs. Longwood, 11-15-16
- 3 Lexie Brown vs. High Point, 11-16-17
- 3 Lexie Brown vs. Georgia, 3-19-18
- 3 Lexie Brown vs. Connecticut, 3-24-18
6. 2 Angela Salvadores vs. WCU, 12-29-15
- 2 Amber Henson vs. Boston College, 1-17-16
- 2 Rebecca Greenwell at Pittsburgh, 1-28-16
- 2 Oderah Chidom vs. North Carolina, 1-24-16
- 2 Oderah Chidom vs. Virginia, 2-4-16

Most Steals - 2nd Quarter

1. 4 Lexie Brown at Georgia Tech, 1-5-17
2. 3 Lexie Brown vs. UNC-Greensboro, 12-7-17
- 3 Lexie Brown vs. Winthrop, 12-10-17
- 3 Lexie Brown vs. Boston College, 1-25-18
- 3 Rebecca Greenwell vs. Boston College, 1-17-16
- 3 Erin Mathias vs. Georgia Tech, 2-1-18
7. 2 Haley Gorecki at Pennsylvania, 11-13-15
- 2 Azura Stevens at South Carolina, 12-6-15
- 2 Kyra Lambert at South Carolina, 12-6-15
- 2 Azura Stevens vs. UMass, 12-14-15

Duke Quarter Records - Individual**Most Steals - 3rd Quarter**

1. 3 Oderah Chidom vs. North Carolina, 1-24-16
- 3 Oderah Chidom vs. Elon, 12-8-16
- 3 Rebecca Greenwell at Virginia, 2-15-17
- 3 Lexie Brown vs. Syracuse, 3-3-17
- 3 Lexie Brown vs. UNC-Greensboro, 12-7-17
- 3 Lexie Brown at Miami, 12-31-17
- 3 Rebecca Greenwell at Clemson, 2-11-18
8. 2 Azura Stevens vs. Liberty, 12-17-15
- 2 Rebecca Greenwell vs. Liberty, 12-17-15
- 2 Rebecca Greenwell vs. Wake Forest, 1-7-16

Most Steals - 4th Quarter

1. 2 Azura Stevens vs. Winthrop, 11-15-15
- 2 Kyra Lambert vs. UMass, 12-14-15
- 2 Lynee Belton vs. Liberty, 12-17-15
- 2 Angela Salvadores at Syracuse, 1-3-16
- 2 Kyra Lambert vs. Boston College, 1-17-16
- 2 Rebecca Greenwell vs. North Carolina, 1-24-16
- 2 Angela Salvadores at Syracuse, 1-3-16
- 2 Kyra Lambert vs. Boston College, 1-17-16
- 2 Kyra Lambert at Clemson, 1-21-16
- 2 Lexie Brown vs. Winthrop, 12-10-17

Duke Basketball

Head Coach Joanne P. McCallie

12th Season at Duke

27th Year as Head Coach

Accomplishments (Heading into 2018-19)

- Inducted into the Maine Basketball Hall of Fame in August of 2014.
- Named the ACC Coach of the Year in 2010, 2012 and 2013.
- Led the Blue Devils to the 2010, 2011 and 2013 ACC Championship, which gave Duke the eighth conference title in school history.
- Guided the Blue Devils to at least the share of the ACC regular season title in four straight years from 2010-13.
- Has led Duke to 302 overall wins and 132 league victories in her 11 years with the Blue Devils.
- Became the 15th fastest women's basketball coach to reach 600 wins, accomplishing it in only 821 games. In terms of years it took to reach this milestone, she is tied for the 10th fastest to reach 600 wins.
- Brought in back-to-back No. 1 classes in 2010 and 2011 as well as the No. 1 class in 2015, while securing the No. 2 class in 2013 and 2014.
- Had five Blue Devils taken in the first round of the WNBA Draft since arriving at Duke, while a total of 10 Duke players have been drafted over the last nine years.
- Collected 200 victories in only 240 games becoming the fourth-quickest Division I head coach to reach 200 wins at a school.
- Is the third-quickest NCAA Division I head coach to reach 150 wins at an

Twitter: @DukeWBB, @CoachPDuke

institution doing so in only 182 games.

- Became the first Division I head coach to win a conference title in four different leagues - ACC, Big Ten, America East, North Atlantic.

- Won 82 games in her first three years at Duke, which is the second-most in NCAA Division I history by a coach in the first three years at a school.

- Is the first Division I head coach to be named conference coach of the year in four different conferences.

- Reached 100 wins at Duke in only 122 games, the second-quickest to ever reach 100 wins at a school.

- Led Duke to its 10th 30-win season out of the last 13 years in 2012-13.

- Became only the second Division I head coach to lead two different programs to 30-win seasons and lead two different programs to a No. 1 seed in the NCAA Tournament.

- Is one of only three Division I head coaches to guide three different programs to the NCAA Tournament.

- Coach P is one of only four head coaches in Division I history to lead three different programs to 25 or more wins in a single season.

- Won a gold medal as coach of the 2006 U20 National team and the 2007 U21 World Championship team.

- In 2005, led MSU to the Big Ten regular season and tournament championships and the NCAA National Championship game.



Coach P Year-by-Year

Year.....	Team	Overall Record	League Record	Postseason
		(Winning %)	(Winning %)	
1992-93	Maine	9-20 (.310)	4-10 (.286)	North Atlantic Tournament Runner-up
1993-94	Maine	20-7 (.741)	12-2 (.857)	North Atlantic Regular-Season Champion
1994-95	Maine	24-6 (.800)	14-2 (.875)	*North Atlantic Champion/NCAA Tournament
1995-96	Maine	27-5 (.844)	18-0 (1.000)	*North Atlantic Champion/NCAA Tournament
1996-97	Maine	22-8 (.733)	17-1 (.944)	*America East Champion/NCAA Tournament
1997-98	Maine	21-9 (.700)	13-5 (.722)	America East Tourn. Champ/NCAA Tournament
1998-99	Maine	24-7 (.774)	17-1 (.944)	America East Regular-Season Champion/NCAA Tournament Second Round
1999-2000	Maine	20-11 (.645)	14-4 (.778)	NCAA Tournament
2000-01	Mich. State	10-18 (.357)	4-12 (.250)	N/A
2001-02	Mich. State	19-13 (.594)	6-10 (.375)	WNIT Semifinals
2002-03	Mich. State	17-12 (.586)	10-6 (.625)	NCAA Tournament
2003-04	Mich. State	22-9 (.710)	10-6 (.625)	NCAA Tournament Second Round
2004-05	Mich. State	33-4 (.892)	13-2 (.867)	*Big Ten Champion/NCAA Tournament National Finalist
2005-06	Mich. State	24-10 (.706)	11-5 (.688)	NCAA Tournament Sweet 16
2006-07	Mich. State	24-9 (.727)	14-2 (.875)	NCAA Tournament Second Round
2007-08	Duke	25-10 (.714)	10-4 (.714)	NCAA Tournament Sweet 16
2008-09	Duke	27-6 (.818)	11-3 (.786)	NCAA Tournament Second Round
2009-10	Duke	30-6 (.833)	12-2 (.857)	*ACC Champion/NCAA Tournament Elite Eight
2010-11	Duke	32-4 (.889)	12-2 (.857)	*ACC Champion/NCAA Tournament Elite Eight
2011-12	Duke	27-6 (.818)	15-1 (.938)	ACC Regular Season Champion/NCAA Tournament Elite Eight
2012-13	Duke	33-3 (.917)	17-1 (.944)	*ACC Champion/NCAA Tournament Elite Eight
2013-14	Duke	28-7 (.800)	12-4 (.750)	NCAA Tournament Second Round
2014-15	Duke	23-11 (.677)	11-5 (.688)	NCAA Tournament Sweet 16
2015-16	Duke	20-12 (.625)	8-8 (.500)	N/A
2016-17	Duke	28-6 (.824)	13-3 (.813)	NCAA Tournament Second Round
2017-18	Duke	24-9 (.727)	11-5 (.688)	NCAA Tournament Sweet 16

*Regular season and tournament

Career Total (26 Years): 613-228 (.729) 311-107 (.744)..... 21 NCAA Tournament Appearances; Eight Conference Championships
Duke (11 Years):..... 297-80 (.788) 132-38 (.776) 10 NCAA Tournament Appearances; Three ACC Championships
Michigan St. (7 Years):..... 149-75 (.665) 68-44 (.607) Five NCAA Tournament Appearances; One Big Ten Championship
Maine (8 Years): 167-73 (.695) 109-25 (.813) Six NCAA Tournaments; Two America East Tournament & Two North Atlantic Champ.

THE STAT CREW SYSTEM
Duke Combined Team Statistics (as of Jul 19, 2018)
All games

RECORD:	OVERALL	HOME	AWAY	NEUTRAL
ALL GAMES	24-9	16-1	7-6	1-2
CONFERENCE	11-5	7-1	4-4	0-0
NON-CONFERENCE	13-4	9-0	3-2	1-2

#	Player	gp-gs	min	Total		3-Point		F-Throw		Rebounds				pf	dq	a	to	blk	stl	pts	avg	
				fg-fga	fg%	3fg-fga	3fg%	ft-fa	ft%	off	def	tot	avg									
04	Lexie Brown	33-33	1165	35.3	221-477	.463	69-186	.371	130-157	.828	22	123	145	4.4	60	1	146	102	5	122	641	19.4
23	Rebecca Greenwell	28-25	893	31.9	137-307	.446	73-170	.429	42-51	.824	25	155	180	6.4	45	0	44	52	3	51	389	13.9
02	Haley Gorecki	23-13	575	25.0	85-201	.423	44-104	.423	38-53	.717	10	79	89	3.9	24	0	66	49	4	30	252	11.0
05	Leaonna Odom	33-27	987	29.9	139-263	.529	0-1	.000	40-67	.597	71	136	207	6.3	78	0	55	57	38	36	318	9.6
35	Erin Mathias	33-33	970	29.4	115-241	.477	0-1	.000	55-73	.753	80	114	194	5.9	78	4	59	69	39	46	285	8.6
12	Mikayla Boykin	10-8	240	24.0	15-53	.283	6-18	.333	10-14	.714	13	19	32	3.2	17	0	32	20	0	12	46	4.6
25	Jade Williams	33-8	487	14.8	58-111	.523	0-1	.000	15-40	.375	42	58	100	3.0	66	1	20	47	40	13	131	4.0
14	Faith Suggs	31-7	351	11.3	22-53	.415	6-18	.333	19-33	.576	20	28	48	1.5	24	0	10	16	1	9	69	2.2
32	Jayda Adams	33-0	431	13.1	21-69	.304	11-41	.268	6-12	.500	6	23	29	0.9	25	0	23	34	1	6	59	1.8
21	Bego Faz Davalos	31-11	350	11.3	25-48	.521	0-0	.000	5-14	.357	30	52	82	2.6	24	0	26	30	23	9	55	1.8
44	Madison Treece	17-0	93	5.5	5-21	.238	0-3	.000	7-13	.538	6	10	16	0.9	7	0	5	3	1	2	17	1.0
11	Sofia Roma	12-0	71	5.9	4-12	.333	0-0	.000	1-5	.200	6	10	16	1.3	10	0	3	8	0	4	9	0.8
30	Emily Schubert	6-0	12	2.0	0-1	.000	0-0	.000	0-0	.000	0	0	0	0.0	2	0	1	0	2	0	0	0.0
Team											63	52	115		1		15					
Total.....		33	6625		847-1857	.456	209-543	.385	368-532	.692	394	859	1253	38.0	461	6	490	502	157	340	2271	68.8
Opponents.....		33	6625		683-1927	.354	235-790	.297	258-389	.663	419	679	1098	33.3	502	-	424	536	99	228	1859	56.3

TEAM STATISTICS	DU	OPP	Date	Opponent	Score	Att.					
SCORING	2271	1859	11-12-17	at Grand Canyon	w	74-61	1683				
Points per game	68.8	56.3	11-16-17	HIGH POINT	w	77-50	3121				
Scoring margin	+12.5	-	11-19-17	at Villanova	L	55-64	1421				
FIELD GOALS-ATT	847-1857	683-1927	11-22-17	at Old Dominion	w	84-51	1960				
Field goal pct	.456	.354	11-25-17	#17/18 OREGON STATE	w	72-65	3408				
3 POINT FG-ATT	209-543	235-790	11-26-17	PRESBYTERIAN	w	79-45	3266				
3-point FG pct	.385	.297	11-30-17	#8/8 OHIO STATE	w	69-60	5535				
3-pt FG made per game	6.3	7.1	12-03-17	at #5/6 South Carolina	L	52-72	13054				
FREE THROWS-ATT	368-532	258-389	12-7-17	UNC GREENSBORO	w	85-54	3080				
Free throw pct	.692	.663	12-10-17	WINTHROP	w	101-30	3332				
F-Throws made per game	11.2	7.8	12-19-17	MAINE	w	69-39	3053				
REBOUNDS	1253	1098	12-21-17	WYOMING	w	63-40	3156				
Rebounds per game	38.0	33.3	12-29-17	LIBERTY	w	68-51	3531				
Rebounding margin	+4.7	-	* 12-31-17	at Miami	L	48-51	878				
ASSISTS	490	424	* 1-4-18	at #3/4 Louisville	L	60-66	8101				
Assists per game	14.8	12.8	* 1-7-18	NC STATE	w	69-56	4531				
TURNOVERS	502	536	* 1-11-18	at Wake Forest	w	80-67	557				
Turnovers per game	15.2	16.2	* 1-14-18	VIRGINIA	w	55-48	3856				
Turnover margin	+1.0	-	* 1-18-18	at Virginia Tech	w	86-75	2365				
Assist/turnover ratio	1.0	0.8	* 1-21-18	at North Carolina	Lot	86-92	4634				
STEALS	340	228	* 1-25-18	BOSTON COLLEGE	w	75-50	3405				
Steals per game	10.3	6.9	* 1-28-18	at Pitt	w	58-46	2430				
BLOCKS	157	99	* 2-1-18	GEORGIA TECH	w	77-59	3311				
Blocks per game	4.8	3.0	* 2-4-18	#5/5 NOTRE DAME	L	54-72	5724				
ATTENDANCE	68993	63214	* 2-7-18	WAKE FOREST	w	59-51	3243				
Home games-Avg/Game	17-4058	13-3345	* 2-11-18	at Clemson	w	60-35	829				
Neutral site-Avg/Game	-	3-6576	* 2-15-18	at Syracuse	L	65-68	2666				
Score by Periods	1st	2nd	3rd	4th	OT	Totals					
Duke	583	545	571	558	14	2271					
Opponents	466	438	458	477	20	1859					
							* 2-19-18	#9/12 FLORIDA STATE	w	79-66	4127
							* 2-25-18	NORTH CAROLINA	w	70-54	9314
							% 3-2-18	vs #23/22 NC State	L	45-51	5613
							^ 3-17-18	vs #23/25 Belmont	w	72-58	3457
							^ 3-19-18	at #18/17 Georgia	w	66-40	2908
							\$ 3-24-18	vs #1/1 Connecticut	L	59-72	10658

* = Conference game
 % = ACC Tournament in Greensboro, N.C.
 ^ = NCAA Tournament in Athens, Ga.
 \$ = NCAA Tournament in Albany, N.Y.



Official Basketball Box Score -- Game Totals -- Final Statistics
 Alaska Anchorage vs Duke
 11-04-18 2:00 PM at Durham, N.C. (Cameron Indoor Stadium)



Alaska Anchorage 54

##	Player	f/g	Total		3-Ptr		Rebounds			PF	TP	A	TO	Blk	Stl	Min
			FG-FGA	FG-FGA	FT-FTA	Off	Def	Tot								
20	Hannah Wandersee	f	2-7	0-2	0-0	0	5	5	1	4	1	2	0	0	30	
03	Tara Thompson	g	3-10	3-10	0-0	2	1	3	3	9	1	1	0	0	28	
04	Kian Mcnair	g	3-7	0-4	1-2	3	1	4	2	7	2	3	0	4	24	
10	Yazmeen Goo	g	5-6	2-2	1-3	0	2	2	4	13	2	6	1	2	28	
14	Sala Langi	g	1-7	0-5	0-0	0	5	5	2	2	0	2	0	2	27	
05	Jahnna Hajdukovich		0-0	0-0	0-0	0	0	0	0	0	0	0	0	0	3	
11	Safiyyah Yasin		2-3	2-2	0-0	0	0	0	1	6	1	0	0	0	13	
15	Victoria Langi		1-4	0-3	0-0	0	0	0	0	2	0	0	0	0	8	
21	Kimani Fernandez-Roy		0-3	0-1	0-0	1	1	2	3	0	0	1	0	0	14	
25	Tennae Voliva		1-5	0-0	0-0	0	0	0	4	2	1	1	0	0	10	
44	Sydni Stallworth		3-7	1-3	2-2	1	0	1	1	9	1	3	0	1	15	
Team						0	1	1				1				
Totals			21-59	8-32	4-7	7	16	23	21	54	9	20	1	9	200	

1st - FG %: 6-15 40.0% 2nd: 4-14 28.6% 3rd: 6-16 37.5% 4th: 5-14 35.7% Game: 21-59 35.6% Deadball
 3FG %: 5-12 41.7% 1-5 20.0% 1-7 14.3% 1-8 12.5% 8-32 25.0% Rebounds
 FT %: 0-0 0.0% 1-2 50.0% 2-3 66.7% 1-2 50.0% 4-7 57.1% 2,1

Duke 75

##	Player	f/g	Total		3-Ptr		Rebounds			PF	TP	A	TO	Blk	Stl	Min
			FG-FGA	FG-FGA	FT-FTA	Off	Def	Tot								
05	Leaonna Odom	f	7-10	0-0	3-6	1	2	3	0	17	6	0	0	1	34	
24	Onome Akinbode-Jame	f	4-5	0-0	3-4	1	10	11	2	11	1	3	1	1	33	
25	Jade Williams	f	8-10	0-1	1-1	3	3	6	2	17	2	4	2	1	31	
02	Haley Gorecki	g	5-12	3-5	5-8	2	8	10	0	18	4	7	0	3	34	
14	Faith Suggs	g	1-3	0-0	0-2	1	0	1	4	2	1	2	0	2	15	
11	Sofia Roma		0-1	0-0	0-0	0	0	0	1	0	0	0	0	0	1	
13	Uchenna Nwoke		0-1	0-0	0-0	1	1	2	0	0	0	2	0	0	3	
23	Rayah Craig		2-7	2-4	2-2	0	4	4	2	8	3	1	0	1	28	
32	Jayda Adams		1-3	0-2	0-0	0	1	1	3	2	1	1	0	3	17	
44	Madison Treece		0-3	0-0	0-0	0	0	0	0	0	0	0	0	0	4	
Team						4	2	6								
Totals			28-55	5-12	14-23	13	31	44	14	75	18	20	3	12	200	

1st - FG %: 11-14 78.6% 2nd: 7-13 53.8% 3rd: 5-13 38.5% 4th: 5-15 33.3% Game: 28-55 50.9% Deadball
 3FG %: 1-3 33.3% 1-2 50.0% 3-4 75.0% 0-3 0.0% 5-12 41.7% Rebounds
 FT %: 6-8 75.0% 2-3 66.7% 2-4 50.0% 4-8 50.0% 14-23 60.9% 7

Officials: Pualani Spurlock, Michael DoCouto, Natasha Camy
 Technical fouls: Alaska Anchorage-None. Duke-None.
 Attendance:

Score by periods	1st	2nd	3rd	4th	Total
Alaska Anchorage	17	10	15	12	54
Duke	29	17	15	14	75

Points	In Paint	Off T/O	2nd Chance	Fast Break	Bench
UAA	20	15	3	8	19
DU	42	23	8	12	10

Last FG - UAA 4th-00:48, DU 4th-02:48.
 Largest lead - UAA by 1 1st-09:27, DU by 24 3rd-02:59.
 UAA led for 00:12. DU led for 39:31. Game was tied for 00:17.

Score tied - 1 time.
 Lead changed - 2 times.



HALEY GORECKI
 #2 • G • 6-0 • RJR.
 Palatine, Ill.
 William Fremd

#2 HALEY GORECKI

NOTES:
 Returning from he second hip injury of her career.

2018-19 HONORS:
 Team Captain

CAREER HIGHS

PTS	29	at North Carolina (1.21.18)
REB	10	vs. Maine (12.19.17)
AST	7	at Wake Forest (1.11.18)
FG	10	at Louisville (1.4.18)
FGA	22	at North Carolina (1.21.18)
FG%	1.000 (4-4)	vs. Texas State (11.28.15)
3FG	7	2x, last at North Carolina (1.21.18)
3FGA	15	at North Carolina (1.21.18)
FT	5	vs. Western Carolina (12.29.15)
FTA	6	vs. Ohio State (11.30.17)
FT%	1.000 (5-5)	vs. Western Carolina (12.29.15)
BLK	2	at Louisville (1.4.18)
STL	5	vs. Wyoming (12.21.17)
MIN	41	at North Carolina (1.21.18)

SEASON HIGHS

PTS	
REB	
AST	
FG	
FGA	
FG%	
3FG	
3FGA	
FT	
FTA	
FT%	
BLK	
STL	
MIN	

MISC.	SEASON	CAREER
10+ PTS		12
20+ PTS		4
5+ REB		10
10+ REB		1
3+ AST		13
3+ STL		5
20+ MIN		16
Double-Double		1
Triple-Double		0
Led Duke in scoring		4
Led Duke in rebounding		2
Charges taken		2

2018-19 GAME-BY-GAME

DATE	OPPONENT	MIN	FG	3FG	FT	O-D-R	A	T	B	S	TP
11.11	at Northwestern										
11.15	at Maine										
11.18	Elon										
11.23	vs. Washinton										
11.24	TBA										
11.25	TBA										
11.28	at Wisconsin										
12.2	Marist										
12.6	UNLV										
12.9	South Carolina										
12.20	at Oregon State										
12.28	East Carolina										
12.30	Florida Gulf Coast										
1.3	at NC State										
1.6	Louisville										
1.10	at Georgia Tech										
1.17	Miami										
1.20	at Florida State										
1.24	Wake Forest										
1.27	Syracuse										
1.31	at Boston College										
2.3	Pittsburgh										
2.7	at North Carolina										
2.10	at Virginia										
2.14	Virginia Tech										
2.21	at Notre Dame										
2.24	at Wake Forest										
2.28	Clemson										
3.3	North Carolina										

* Denotes Started Game; ^ Denotes ACC Tournament; # Denotes NCAA Tournament

GORECKI CAREER STATISTICS

YEAR	GP	GS	MIN	AVG	FG	FGA	PCT	3FG	3FGA	PCT	FT	FTA	PCT	OFF	DEF	REB	AVG	PF	FO	AST	TO	BLK	STL	PTS	AVG
2015-16	14	1	227	16.2	20	72	.278	8	36	.222	15	17	.882	12	25	37	2.6	9	0	15	25	1	16	63	4.5
2016-17	0	0	0	0.0	0	0	.000	0	0	.000	0	0	.000	0	0	0	0.0	0	0	0	0	0	0	0	0.0
2017-18	23	13	575	25.0	85	201	.423	44	104	.423	38	53	.717	10	79	89	3.9	24	0	66	49	4	30	252	11.0
2018-19																									
TOTAL	37	14	802	21.7	105	273	.385	52	140	.371	53	70	.757	22	104	126	3.4	33	0	81	74	5	46	315	8.5



LEONNA ODOM
 #5 • F • 6-2 • JR.
 Lompoc, Calif.
 Chaminade

#5 LEONNA ODOM

NOTES:

2018-19 HONORS:
 John R. Wooden Award Candidate
 Cheryl Miller Award Watch List

CAREER HIGHS

PTS	25	vs. Belmont (3.17.18)
REB	13	vs. Ohio State (11.30.17)
AST	6	vs. Maine (12.19.17)
FG	11	vs. Belmont (3.17.18)
FGA	19	vs. Florida State (2.19.18)
FG%	1.000 (5-5)	vs. Miami (3.4.17)
3FG		
3FGA	1	3x, last vs. Syracuse (2.15.18)
FT	7	vs. Hampton (3.18.17)
FTA	8	2x, last at Syracuse (2.15.18)
FT%	1.000 (4-4)	at Wake Forest (1.11.18)
BLK	4	2x, last vs. Ohio State (11.30.17)
STL	5	2x, last vs. South Carolina (12.4.16)
MIN	39	vs. Florida State (2.19.18)

SEASON HIGHS

PTS	
REB	
AST	
FG	
FGA	
FG%	
3FG	
3FGA	
FT	
FTA	
FT%	
BLK	
STL	
MIN	

MISC.	SEASON	CAREER
10+ PTS		23
20+ PTS		3
5+ REB		37
10+ REB		7
3+ AST		6
3+ BLK		5
20+ MIN		50
Double-Double		4
Triple-Double		0
Led Duke in scoring		4
Led Duke in rebounding		23
Charges taken		3

2018-19 GAME-BY-GAME

DATE	OPPONENT	MIN	FG	3FG	FT	O-D-R	A	T	B	S	TP
11.11	at Northwestern										
11.15	at Maine										
11.18	Elon										
11.23	vs. Washinton										
11.24	TBA										
11.25	TBA										
11.28	at Wisconsin										
12.2	Marist										
12.6	UNLV										
12.9	South Carolina										
12.20	at Oregon State										
12.28	East Carolina										
12.30	Florida Gulf Coast										
1.3	at NC State										
1.6	Louisville										
1.10	at Georgia Tech										
1.17	Miami										
1.20	at Florida State										
1.24	Wake Forest										
1.27	Syracuse										
1.31	at Boston College										
2.3	Pittsburgh										
2.7	at North Carolina										
2.10	at Virginia										
2.14	Virginia Tech										
2.21	at Notre Dame										
2.24	at Wake Forest										
2.28	Clemson										
3.3	North Carolina										

* Denotes Started Game; ^ Denotes ACC Tournament; # Denotes NCAA Tournament

ODOM CAREER STATISTICS

YEAR	GP	GS	MIN	AVG	FG	FGA	PCT	3FG	3FGA	PCT	FT	FTA	PCT	OFF	DEF	REB	AVG	PF	FO	AST	TO	BLK	STL	PTS	AVG
2016-17	34	17	784	23.1	115	212	.542	0	2	.000	46	72	.639	75	81	156	4.6	82	0	24	49	32	39	276	8.1
2017-18	33	27	987	29.9	139	263	.529	0	1	.000	40	67	.597	71	136	207	6.3	78	0	55	57	38	36	318	9.6
2018-19																									
TOTAL	67	44	1771	26.4	254	475	.535	0	3	.000	86	139	.619	146	217	363	5.4	160	0	79	106	70	75	594	8.9



SOFIA ROMA
 #11 • C • 6-2 • RSR.
 Richmond Hill, N.Y.
 Wagner College

#11 SOFIA ROMA

NOTES:

2018-19 HONORS:
 Team Captain

CAREER HIGHS

PTS	13	at Mount St. Mary's (1.31.15)
REB	22	at Mount St. Mary's (1.31.15)
AST	2	5x, last vs. LIU Brooklyn (1.18.16)
FG	5	vs. Central Conn. (1.31.15)
FGA	9	2x, last at Fairleigh Dickinson (2.22.16)
FG%	1.000 (2-2)	vs. Columbia (12.30.14)
3FG		
3FGA		
FT	7	vs. Central Conn. (1.21.16)
FTA	10	vs. Central Conn. (1.21.16)
FT%	1.000 (4-4)	vs. St. Francis Brooklyn (1.26.15)
BLK	8	at Robert Morris (1.4.16)
STL	3	vs. St. Francis Brooklyn (2.15.16)
MIN	25	vs. Virginia Tech (1.15.15)

SEASON HIGHS

PTS	
REB	
AST	
FG	
FGA	
FG%	
3FG	
3FGA	
FT	
FTA	
FT%	
BLK	
STL	
MIN	

MISC.	SEASON	CAREER
10+ PTS		7
20+ PTS		0
5+ REB		40
10+ REB		18
3+ AST		0
3+ BLK		13
20+ MIN		31
Double-Double		6
Triple-Double		0
Led Duke in scoring		0
Led Duke in rebounding		0
Charges taken		0

2018-19 GAME-BY-GAME

DATE	OPPONENT	MIN	FG	3FG	FT	O-D-R	A	T	B	S	TP
11.11	at Northwestern										
11.15	at Maine										
11.18	Elon										
11.23	vs. Washinton										
11.24	TBA										
11.25	TBA										
11.28	at Wisconsin										
12.2	Marist										
12.6	UNLV										
12.9	South Carolina										
12.20	at Oregon State										
12.28	East Carolina										
12.30	Florida Gulf Coast										
1.3	at NC State										
1.6	Louisville										
1.10	at Georgia Tech										
1.17	Miami										
1.20	at Florida State										
1.24	Wake Forest										
1.27	Syracuse										
1.31	at Boston College										
2.3	Pittsburgh										
2.7	at North Carolina										
2.10	at Virginia										
2.14	Virginia Tech										
2.21	at Notre Dame										
2.24	at Wake Forest										
2.28	Clemson										
3.3	North Carolina										

* Denotes Started Game; ^ Denotes ACC Tournament; # Denotes NCAA Tournament

ROMA CAREER STATISTICS

YEAR	GP	GS	MIN	AVG	FG	FGA	PCT	3FG	3FGA	PCT	FT	FTA	PCT	OFF	DEF	REB	AVG	PF	FO	AST	TO	BLK	STL	PTS	AVG
2014-15*	27	1	443	13.8	32	80	.400	0	0	.000	25	55	.455	62	99	161	5.8	66	0	2	43	29	15	89	3.2
2015-16*	27	26	791	28.3	54	142	.380	0	0	.000	51	81	.630	96	185	281	10.0	87	3	18	47	59	15	159	5.7
2016-17	0	0	0	0.0	0	0	.000	0	0	.000	0	0	.000	0	0	0	0.0	0	0	0	0	0	0	0	0.0
2017-18	12	0	71	5.9	4	12	.333	0	0	.000	1	5	.200	6	10	16	1.3	10	0	3	8	0	4	9	0.8
2018-19																									
TOTAL	66	27	1296	16.0	90	234	.371	0	0	.000	77	141	.438	164	294	458	5.8	161	3	23	98	88	34	257	3.6

* at Wagner College



#12 MIKAYLA BOYKIN

NOTES:

2018-19 HONORS:

MIKAYLA BOYKIN
 #12 • G • 5-9 • RFR.
 Clinton, N.C.
 Clinton

CAREER HIGHS

PTS	12	at Grand Canyon (11.12.17)
REB	7	vs. Winthrop (12.10.17)
AST	7	vs. High Point (11.16.17)
FG	5	at Grand Canyon (11.12.17)
FGA	13	at Grand Canyon (11.12.17)
FG%	1.000 (1-1)	vs. Ohio State (11.30.17)
3FG	2	2x, last vs. Oregon State (11.25.17)
3FGA	4	at Grand Canyon (11.12.17)
FT	2	vs. High Point (11.16.17)
FTA	4	vs. High Point (11.16.17)
FT%	1.000 (2-2)	2x, last vs. Ohio State (11.30.17)
BLK		
STL	3	2x, last vs. Oregon State (11.25.17)
MIN	32	at Grand Canyon (11.12.17)

SEASON HIGHS

PTS	
REB	
AST	
FG	
FGA	
FG%	
3FG	
3FGA	
FT	
FTA	
FT%	
BLK	
STL	
MIN	

MISC.	SEASON	CAREER
10+ PTS		1
20+ PTS		
5+ REB		2
10+ REB		
3+ AST		4
3+ BLK		2
20+ MIN		5
Double-Double		
Triple-Double		
Led Duke in scoring		
Led Duke in rebounding		1
Charges taken		2

2018-19 GAME-BY-GAME

DATE	OPPONENT	MIN	FG	3FG	FT	O-D-R	A	T	B	S	TP
11.11	at Northwestern										
11.15	at Maine										
11.18	Elon										
11.23	vs. Washinton										
11.24	TBA										
11.25	TBA										
11.28	at Wisconsin										
12.2	Marist										
12.6	UNLV										
12.9	South Carolina										
12.20	at Oregon State										
12.28	East Carolina										
12.30	Florida Gulf Coast										
1.3	at NC State										
1.6	Louisville										
1.10	at Georgia Tech										
1.17	Miami										
1.20	at Florida State										
1.24	Wake Forest										
1.27	Syracuse										
1.31	at Boston College										
2.3	Pittsburgh										
2.7	at North Carolina										
2.10	at Virginia										
2.14	Virginia Tech										
2.21	at Notre Dame										
2.24	at Wake Forest										
2.28	Clemson										
3.3	North Carolina										

* Denotes Started Game; ^ Denotes ACC Tournament; # Denotes NCAA Tournament

BOYKIN CAREER STATISTICS																											
YEAR	GP	GS	MIN	AVG	FG	FGA	PCT	3FG	3FGA	PCT	FT	FTA	PCT	OFF	DEF	REB	AVG	PF	FO	AST	TO	BLK	STL	PTS	AVG		
2017-18	10	8	240	24.0	15	53	.283	6	18	.333	10	14	.714	13	19	32	3.2	17	0	32	20	0	12	46	4.6		
2018-19																											
TOTAL	10	8	240	24.0	15	53	.283	6	18	.333	10	14	.714	13	19	32	3.2	17	0	32	20	0	12	46	4.6		



#14 FAITH SUGGS

NOTES:

2018-19 HONORS:
Team Captain

FAITH SUGGS
#14 • G/F • 6-1 • SR.
Flossmoor, Ill.
Homewood Flossmoor

CAREER HIGHS

PTS	8	4x, last vs. Winthrop (12.10.17)
REB	8	2x, last vs. Belmont (3.17.18)
AST	1	23x, last vs. Belmont (3.17.18)
FG	3	6x, last vs. Boston College (1.25.18)
FGA	6	2x, last vs. Longwood (11.15.16)
FG%	1.000 (3-3)	vs. Presbyterian (11.26.17)
3FG	2	2x, last vs. Notre Dame (3.4.16)
3FGA	3	5x, last vs. Pittsburgh (2.12.17)
FT	4	vs. Belmont (3.17.18)
FTA	6	3x, last vs. Belmont (3.17.18)
FT%	1.000 (2-2)	4x, last at Clemson (2.11.18)
BLK		
STL	4	at Liberty (11.11.16)
MIN	29	vs. Belmont (3.17.18)

SEASON HIGHS

PTS	
REB	
AST	
FG	
FGA	
FG%	
3FG	
3FGA	
FT	
FTA	
FT%	
BLK	
STL	
MIN	

MISC.	SEASON	CAREER
10+ PTS		0
20+ PTS		0
5+ REB		5
10+ REB		0
3+ AST		0
3+ STL		1
20+ MIN		7
Double-Double		0
Triple-Double		0
Led Duke in scoring		0
Led Duke in rebounding		3
Charges taken		4

2018-19 GAME-BY-GAME

DATE	OPPONENT	MIN	FG	3FG	FT	O-D-R	A	T	B	S	TP
11.11	at Northwestern										
11.15	at Maine										
11.18	Elon										
11.23	vs. Washinton										
11.24	TBA										
11.25	TBA										
11.28	at Wisconsin										
12.2	Marist										
12.6	UNLV										
12.9	South Carolina										
12.20	at Oregon State										
12.28	East Carolina										
12.30	Florida Gulf Coast										
1.3	at NC State										
1.6	Louisville										
1.10	at Georgia Tech										
1.17	Miami										
1.20	at Florida State										
1.24	Wake Forest										
1.27	Syracuse										
1.31	at Boston College										
2.3	Pittsburgh										
2.7	at North Carolina										
2.10	at Virginia										
2.14	Virginia Tech										
2.21	at Notre Dame										
2.24	at Wake Forest										
2.28	Clemson										
3.3	North Carolina										

* Denotes Started Game; ^ Denotes ACC Tournament; # Denotes NCAA Tournament

SUGGS CAREER STATISTICS

YEAR	GP	GS	MIN	AVG	FG	FGA	PCT	3FG	3FGA	PCT	FT	FTA	PCT	OFF	DEF	REB	AVG	PF	FO	AST	TO	BLK	STL	PTS	AVG
2015-16	29	1	257	8.9	19	56	.339	8	25	.320	12	23	.522	16	30	46	1.6	33	0	8	20	0	9	58	2.0
2016-17	32	0	194	6.1	16	47	.340	2	21	.095	2	4	.500	8	17	25	0.8	16	0	8	8	0	13	36	1.1
2017-18	31	7	351	11.3	22	53	.415	6	18	.333	19	33	.576	20	28	48	1.5	24	0	10	16	1	9	69	2.2
2018-19																									
TOTAL	92	8	802	8.7	57	156	.365	16	64	.250	33	60	.550	44	75	119	1.3	73	0	26	44	1	31	163	1.8



KYRA LAMBERT
 #15 • G • 5-9 • R.J.R.
 Cibolo, Texas
 Samuel Clemens

#15 KYRA LAMBERT

NOTES:

Recovering from a torn ACL suffered in the 2017 NCAA Tournament
 Will miss the 2018-19 season

2018-19 HONORS:

Team Captain
 Nancy Lieberman Award Watch List

CAREER HIGHS

PTS	17	vs. Grand Canyon (11.17.16)
REB	9	vs. Syracuse (3.3.17)
AST	13	at North Carolina (2.26.17)
FG	6	2x, last vs. GCU (11.17.16)
FGA	12	4x, last at Florida State (1.8.17)
FG%	1.000 (2-2)	vs. Western Carolina (12.29.15)
3FG	3	4x, last at Boston College (1.22.17)
3FGA	7	2x, last vs. Old Dominion (11.22.16)
FT	5	vs. Virginia (3.3.16)
FTA	8	vs. Virginia (3.3.16)
FT%	1.000 (4-4)	2x, last vs. Old Dominion (11.22.16)
BLK	2	vs. Syracuse (2.10.17)
STL	5	3x, last vs. Louisville (1.2.17)
MIN	40	vs. Texas A&M (11.18.15)

SEASON HIGHS

PTS	
REB	
AST	
FG	
FGA	
FG%	
3FG	
3FGA	
FT	
FTA	
FT%	
BLK	
STL	
MIN	

MISC.	SEASON	CAREER
10+ PTS		17
20+ PTS		0
5+ REB		17
10+ REB		0
3+ AST		35
3+ STL		11
20+ MIN		62
Double-Double		1
Triple-Double		0
Led Duke in scoring		2
Led Duke in rebounding		4
Charges taken		9

2018-19 GAME-BY-GAME

DATE	OPPONENT	MIN	FG	3FG	FT	O-D-R	A	T	B	S	TP
11.11	at Northwestern										
11.15	at Maine										
11.18	Elon										
11.23	vs. Washinton										
11.24	TBA										
11.25	TBA										
11.28	at Wisconsin										
12.2	Marist										
12.6	UNLV										
12.9	South Carolina										
12.20	at Oregon State										
12.28	East Carolina										
12.30	Florida Gulf Coast										
1.3	at NC State										
1.6	Louisville										
1.10	at Georgia Tech										
1.17	Miami										
1.20	at Florida State										
1.24	Wake Forest										
1.27	Syracuse										
1.31	at Boston College										
2.3	Pittsburgh										
2.7	at North Carolina										
2.10	at Virginia										
2.14	Virginia Tech										
2.21	at Notre Dame										
2.24	at Wake Forest										
2.28	Clemson										
3.3	North Carolina										

* Denotes Started Game; ^ Denotes ACC Tournament; # Denotes NCAA Tournament

LAMBERT CAREER STATISTICS

YEAR	GP	GS	MIN	AVG	FG	FGA	PCT	3FG	3FGA	PCT	FT	FTA	PCT	OFF	DEF	REB	AVG	PF	FO	AST	TO	BLK	STL	PTS	AVG
2015-16	32	23	874	27.3	70	184	.380	18	56	.321	40	61	.656	13	75	88	2.8	79	1	79	62	5	36	198	6.2
2016-17	33	33	992	30.1	98	225	.436	23	58	.397	39	53	.736	29	93	122	3.7	44	1	116	58	5	56	258	7.8
2017-18	-	-	-	-	-	-	-	-	-	-	-	-	-	-	-	-	-	-	-	-	-	-	-	-	-
2018-19	-	-	-	-	-	-	-	-	-	-	-	-	-	-	-	-	-	-	-	-	-	-	-	-	-
TOTAL	65	56	1866	28.7	168	409	.411	41	114	.360	79	114	.693	42	168	210	3.2	123	2	195	120	10	92	456	7.0



JADE WILLIAMS
 #25 • F/C • 6-5 • SO.
 The Colony, Texas
 The Colony

#25 JADE WILLIAMS

NOTES:

2018-19 HONORS:
 Lisa Leslie Award Watch List

CAREER HIGHS

PTS	16	vs. Georgia Tech (2.1.18)
REB	8	vs. Georgia Tech (2.1.18)
AST	3	vs. Florida State (2.19.18)
FG	7	vs. Georgia Tech (2.1.18)
FGA	9	vs. Florida State (2.19.18)
FG%	1.000 (3-3)2x, last at North Carolina (1.21.18)	
3FG		
3FGA	1	vs. NC State (1.7.18)
FT	3	at Virginia Tech (1.18.18)
FTA	6	vs. Georgia Tech (2.1.18)
FT%	1.000 (2-2)	vs. Florida State (2.19.18)
BLK	6	vs. Georgia Tech (2.1.18)
STL	2	3x, last vs. Florida State (2.19.18)
MIN	31	2x, last vs. Georgia Tech (2.1.18)

SEASON HIGHS

PTS	
REB	
AST	
FG	
FGA	
FG%	
3FG	
3FGA	
FT	
FTA	
FT%	
BLK	
STL	
MIN	

MISC.	SEASON	CAREER
10+ PTS		1
20+ PTS		
5+ REB		1
10+ REB		
3+ AST		1
3+ STL		
20+ MIN		8
Double-Double		
Triple-Double		
Led Duke in scoring		
Led Duke in rebounding		1
Charges taken		

2018-19 GAME-BY-GAME

DATE	OPPONENT	MIN	FG	3FG	FT	O-D-R	A	T	B	S	TP
11.11	at Northwestern										
11.15	at Maine										
11.18	Elon										
11.23	vs. Washinton										
11.24	TBA										
11.25	TBA										
11.28	at Wisconsin										
12.2	Marist										
12.6	UNLV										
12.9	South Carolina										
12.20	at Oregon State										
12.28	East Carolina										
12.30	Florida Gulf Coast										
1.3	at NC State										
1.6	Louisville										
1.10	at Georgia Tech										
1.17	Miami										
1.20	at Florida State										
1.24	Wake Forest										
1.27	Syracuse										
1.31	at Boston College										
2.3	Pittsburgh										
2.7	at North Carolina										
2.10	at Virginia										
2.14	Virginia Tech										
2.21	at Notre Dame										
2.24	at Wake Forest										
2.28	Clemson										
3.3	North Carolina										

* Denotes Started Game; ^ Denotes ACC Tournament; # Denotes NCAA Tournament

WILLIAMS CAREER STATISTICS

YEAR	GP	GS	MIN	AVG	FG	FGA	PCT	3FG	3FGA	PCT	FT	FTA	PCT	OFF	DEF	REB	AVG	PF	FO	AST	TO	BLK	STL	PTS	AVG
2017-18	33	8	487	14.8	58	111	.523	0	1	.000	15	40	.375	42	58	100	3.0	66	1	20	47	40	13	131	4.0
2018-19																									
TOTAL	33	8	487	14.8	58	111	.523	0	1	.000	15	40	.375	42	58	100	3.0	66	1	20	47	40	13	131	4.0



#30 EMILY SCHUBERT

NOTES:

2018-19 HONORS:

EMILY SCHUBERT
 #30 • C • 6-4 • RSO.
 Elizabethton, Tenn.
 Elizabethton

CAREER HIGHS

PTS		
REB		
AST	1	vs. UNCG (12.7.17)
FG		
FGA	1	vs. Boston College (1.25.18)
FG%		
3FG		
3FGA		
FT		
FTA		
FT%		
BLK	1	2x, last vs. Presbyterian (11.26.17)
STL		
MIN	4	vs. Boston College (1.25.18)

SEASON HIGHS

PTS	
REB	
AST	
FG	
FGA	
FG%	
3FG	
3FGA	
FT	
FTA	
FT%	
BLK	
STL	
MIN	

MISC.	SEASON	CAREER
10+ PTS		
20+ PTS		
5+ REB		
10+ REB		
3+ AST		
3+ STL		
20+ MIN		
Double-Double		
Triple-Double		
Led Duke in scoring		
Led Duke in rebounding		
Charges taken		

2018-19 GAME-BY-GAME

DATE	OPPONENT	MIN	FG	3FG	FT	O-D-R	A	T	B	S	TP
11.11	at Northwestern										
11.15	at Maine										
11.18	Elon										
11.23	vs. Washinton										
11.24	TBA										
11.25	TBA										
11.28	at Wisconsin										
12.2	Marist										
12.6	UNLV										
12.9	South Carolina										
12.20	at Oregon State										
12.28	East Carolina										
12.30	Florida Gulf Coast										
1.3	at NC State										
1.6	Louisville										
1.10	at Georgia Tech										
1.17	Miami										
1.20	at Florida State										
1.24	Wake Forest										
1.27	Syracuse										
1.31	at Boston College										
2.3	Pittsburgh										
2.7	at North Carolina										
2.10	at Virginia										
2.14	Virginia Tech										
2.21	at Notre Dame										
2.24	at Wake Forest										
2.28	Clemson										
3.3	North Carolina										

* Denotes Started Game; ^ Denotes ACC Tournament; # Denotes NCAA Tournament

SCHUBERT CAREER STATISTICS																									
YEAR	GP	GS	MIN	AVG	FG	FGA	PCT	3FG	3FGA	PCT	FT	FTA	PCT	OFF	DEF	REB	AVG	PF	FO	AST	TO	BLK	STL	PTS	AVG
2016-17	0	0	0	0.0	0	0	.000	0	0	.000	0	0	.000	0	0	0	0.0	0	0	0	0	0	0	0	0.0
2017-18	6	0	12	2.0	0	1	.000	0	0	.000	0	0	.000	0	0	0	0.0	2	0	1	0	2	0	0	0.0
2018-19																									
TOTAL	6	0	12	2.0	0	1	.000	0	0	.000	0	0	.000	0	0	0	0.0	2	0	1	0	2	0	0	0.0



#32 JAYDA ADAMS

NOTES:

2018-19 HONORS:

JAYDA ADAMS
 #32 • G • 6-0 • SO.
 Irvine, Calif.
 Mater Dei

CAREER HIGHS

PTS	8	vs. Maine (12.19.17)
REB	2	3x, last at Louisville (1.4.18)
AST	3	vs. Liberty (12.29.17)
FG	3	vs. Maine (12.19.17)
FGA	6	2x, last vs. Connecticut (3.24.18)
FG%	.600 (3-5)	vs. Maine (12.19.17)
3FG	2	vs. Maine (12.19.17)
3FGA	4	2x, last at Wake Forest (1.11.18)
FT	1	2x, last at Miami (12.31.17)
FTA	2	3x, last at Miami (12.31.17)
FT%	.500 (1-2)	2x, last at Miami (12.31.17)
BLK		
STL	1	3x, last vs. UNCG (12.7.17)
MIN	31	at Louisville (1.4.18)

SEASON HIGHS

PTS	
REB	
AST	
FG	
FGA	
FG%	
3FG	
3FGA	
FT	
FTA	
FT%	
BLK	
STL	
MIN	

MISC.	SEASON	CAREER
10+ PTS		
20+ PTS		
5+ REB		
10+ REB		
3+ AST		1
3+ STL		
20+ MIN		7
Double-Double		
Triple-Double		
Led Duke in scoring		
Led Duke in rebounding		
Charges taken		

2018-19 GAME-BY-GAME

DATE	OPPONENT	MIN	FG	3FG	FT	O-D-R	A	T	B	S	TP
11.11	at Northwestern										
11.15	at Maine										
11.18	Elon										
11.23	vs. Washinton										
11.24	TBA										
11.25	TBA										
11.28	at Wisconsin										
12.2	Marist										
12.6	UNLV										
12.9	South Carolina										
12.20	at Oregon State										
12.28	East Carolina										
12.30	Florida Gulf Coast										
1.3	at NC State										
1.6	Louisville										
1.10	at Georgia Tech										
1.17	Miami										
1.20	at Florida State										
1.24	Wake Forest										
1.27	Syracuse										
1.31	at Boston College										
2.3	Pittsburgh										
2.7	at North Carolina										
2.10	at Virginia										
2.14	Virginia Tech										
2.21	at Notre Dame										
2.24	at Wake Forest										
2.28	Clemson										
3.3	North Carolina										

* Denotes Started Game; ^ Denotes ACC Tournament; # Denotes NCAA Tournament

YEAR	GP	GS	MIN	AVG	FG	FGA	PCT	3FG	3FGA	PCT	FT	FTA	PCT	OFF	DEF	REB	AVG	PF	FO	AST	TO	BLK	STL	PTS	AVG
2017-18	33	0	431	13.1	21	69	.304	11	41	.268	6	12	.500	6	23	29	0.9	25	0	23	34	1	6	59	1.8
2018-19																									
TOTAL	33	0	431	13.1	21	69	.304	11	41	.268	6	12	.500	6	23	29	0.9	25	0	23	34	1	6	59	1.8



MADISON TREECE
 #44 • F • 6-4 • SO.
 St. Peters, Mo.
 Rock Bridge

#44 MADISON TREECE

NOTES:

2018-19 HONORS:

CAREER HIGHS

PTS	5	2x, last vs. Winthrop (12.10.17)
REB	5	vs. Maine (12.19.17)
AST	3	vs. Winthrop (12.10.17)
FG	2	vs. Presbyterian (11.26.17)
FGA	3	vs. Presbyterian (11.26.17)
FG%	1.000 (2-2)	vs. Winthrop (12.10.17)
3FG		
3FGA		
FT	2	at Old Dominion (11.22.17)
FTA	4	at Old Dominion (11.22.17)
FT%	1.000 (1-1)	vs. Presbyterian (11.26.17)
BLK	1	at Old Dominion (11.22.17)
STL	1	vs. Winthrop (12.10.17)
MIN	18	vs. Presbyterian (11.26.17)

SEASON HIGHS

PTS	
REB	
AST	
FG	
FGA	
FG%	
3FG	
3FGA	
FT	
FTA	
FT%	
BLK	
STL	
MIN	

MISC.	SEASON	CAREER
10+ PTS		
20+ PTS		
5+ REB		1
10+ REB		
3+ AST		1
3+ STL		
20+ MIN		
Double-Double		
Triple-Double		
Led Duke in scoring		
Led Duke in rebounding		
Charges taken		

2018-19 GAME-BY-GAME

DATE	OPPONENT	MIN	FG	3FG	FT	O-D-R	A	T	B	S	TP
11.11	at Northwestern										
11.15	at Maine										
11.18	Elon										
11.23	vs. Washinton										
11.24	TBA										
11.25	TBA										
11.28	at Wisconsin										
12.2	Marist										
12.6	UNLV										
12.9	South Carolina										
12.20	at Oregon State										
12.28	East Carolina										
12.30	Florida Gulf Coast										
1.3	at NC State										
1.6	Louisville										
1.10	at Georgia Tech										
1.17	Miami										
1.20	at Florida State										
1.24	Wake Forest										
1.27	Syracuse										
1.31	at Boston College										
2.3	Pittsburgh										
2.7	at North Carolina										
2.10	at Virginia										
2.14	Virginia Tech										
2.21	at Notre Dame										
2.24	at Wake Forest										
2.28	Clemson										
3.3	North Carolina										

* Denotes Started Game; ^ Denotes ACC Tournament; # Denotes NCAA Tournament

TREECE CAREER STATISTICS

YEAR	GP	GS	MIN	AVG	FG	FGA	PCT	3FG	3FGA	PCT	FT	FTA	PCT	OFF	DEF	REB	AVG	PF	FO	AST	TO	BLK	STL	PTS	AVG
2017-18	17	0	93	5.5	5	21	.238	0	3	.000	7	13	.538	6	10	16	0.9	7	0	5	3	1	2	17	1.0
2018-19																									
TOTAL	17	0	93	5.5	5	21	.238	0	3	.000	7	13	.538	6	10	16	0.9	7	0	5	3	1	2	17	1.0