



DUKE WOMEN'S BASKETBALL

NCAA Final Four - 1999, 2002, 2003, 2006

NCAA Finalist - 1999, 2006

ACC Champions - 2000, 2001, 2002, 2003, 2004, 2010, 2011, 2013

Lindy Brown, Senior Associate SID • Women's Basketball Contact • Office: 919-684-2664 • Cell: 919-599-9821 • lindy.brown@duke.edu
www.GoDuke.com • Twitter - @DukeWBB, @CoachPDuke • Facebook - DukeWBB • Instagram - DukeWBB

2018-19 SCHEDULE (6-3 Overall, 0-0 ACC)

Date	DU	Opp	Opponent	Time/Results	WATCH
N11	21/20	--	at Northwestern	L, 58-84	Big Ten
N15	--/20	--	at Maine	W, 66-63	ESPN+
N15	--/20	--	ELON	W, 81-64	ACCN Extra

Golf Coast Showcase (Estero, Fla.)

N23	--	--	vs. Washington	L, 64-71	GCS
N24	--	--	vs. Ball State	W, 79-62	GCS
N25	--	21/18	vs. Missouri	L, 54-62	GCS

Big Ten/ACC Challenge (Madison, Wisc.)

N28	--	--	at Wisconsin	W, 60-53	Big Ten
-----	----	----	--------------	----------	---------

D2	--	--	MARIST	W, 64-56	ACCN Extra
D6	--	--	UNLV	W, 66-38	ACCN Extra
D9	--	22/24	SOUTH CAROLINA	2:00 PM	ACCN Extra
D20	--	--	at Oregon State	10:00 PM	Pac 12
D28	--	--	EAST CAROLINA	7:00 PM	ACCN Extra
D30	--	--	FLORIDA GULF COAST	2:00 PM	ACCN Extra
J3	--	--	at N.C. State*	7:00 PM	ACCN Extra
J6	--	--	LOUISVILLE*	2:00 PM	ACCN Extra
J10	--	--	at Georgia Tech*	7:00 PM	ACCN Extra
J17	--	--	MIAMI*	7:00 PM	ACCN Extra
J20	--	--	at Florida State*	2:00 PM	ACCN Extra
J24	--	--	WAKE FOREST*	7:00 PM	ACCN Extra
J27	--	--	SYRACUSE*	1:00 PM	RSN
J31	--	--	at Boston College*	7:00 PM	ACCN Extra
F3	--	--	PITTSBURGH*	2:00 PM	ACCN Extra
F7	--	--	at North Carolina*	7:00 PM	ACCN Extra
F10	--	--	at Virginia*	2:00 PM	ACCN Extra
F14	--	--	VIRGINIA TECH*	7:00 PM	RSN
F21	--	--	at Notre Dame*	7:00 PM	ACCN Extra
F24	--	--	at Wake Forest*	1:00 PM	ACCN Extra
F28	--	--	CLEMSON*	7:00 PM	ACCN Extra
M3	--	--	NORTH CAROLINA*	12:00 PM	ESPN2

ACC Tournament (Greensboro, N.C.)

M8	--	--	ACC Tournament Quarters	TBA	RSN
M9	--	--	ACC Tournament Semis	TBA	ESPNU
M10	--	--	ACC Tournament Champ.	1 PM	ESPN2

NCAA Tournament

M22-25	--	--	NCAA 1st & 2nd Rounds	TBA	TBA
M29-A1	--	--	NCAA Regionals	TBA	TBA
A5-7	--	--	NCAA Final Four	TBA	TBA

All times are Eastern * ACC Contest

ALL CAPS - Home Games RSN - Regional Sports Network
ACCN Extra - ACC Network Extra

RSN, which reaches in excess of 51.4 million homes and includes Fox Sports South, Fox Sports Carolinas, Fox Sports Florida, Sun Sports, Fox Sports Indiana, Fox Sports Midwest, Comcast Sports Net Mid-Atlantic, New England Sports Network (NESN), the YES Network, the Madison Square Garden Network (MSG) in New York and Root Sports in Pennsylvania. All ACC games produced as part of the RSN package will be available via WatchESPN, but are subject to regional blackout.

SOUTH CAROLINA GAMECOCKS AT DUKE BLUE DEVILS



5-4, 0-0 SEC

At



6-3, 0-0 ACC

Game 10 ■ Sunday, Dec. 9 ■ 2:00 PM (ET)
Durham, N.C. ■ Cameron Indoor Stadium (9,314)
ACC Network Extra

Tickets: www.GoDuke.com (1-877-375-3853)

Live Stats: www.GoDuke.com

Radio: Blue Devil IMG Sports Network

..... (620 AM, 99.3 FM, 96.5 FM, www.GoDuke.com, TuneIn app)

Radio Talent: Chris Edwards (PXP), Rebecca Greenwell (Color)

TV/Video: ACC Network Extra

TV Talent: Ryan Craig (PXP), Debbie Taylor (Color)

Duke Head Coach: Joanne P. McCallie (Northwestern, '87)

Record: 619-231 (27)

South Carolina Head Coach: Dawn Staley (Virginia, '92)

Record: 427-171 (19)

NOTABLES

- Mikayla Boykin made her 2018-19 debut against UNLV and tallied 11 points, six assists, five steals and four rebounds in 20 minutes
- The Blue Devils are in the final game of a three-game homestand and are actually hosting five games over a span of six contests in Cameron Indoor Stadium

THE SERIES

- South Carolina leads the overall series 4-2
- Duke won the last meeting in Cameron in (2016) and is 1-2 overall in Cameron against the Gamecocks
- Coach P is 1-3 versus South Carolina
- Duke is 40-24 all-time versus the SEC and 0-1 this season
- Coach P is 22-23 versus the SEC

A WIN WOULD

- Give Duke a four-game winning streak
- Be the 19th straight in Cameron Indoor Stadium in the month of December
- Give the Blue Devils 35 wins out of the last 37 games in Cameron Indoor Stadium
- Mark the 13th straight home win against a non-conference opponent

Setting the Scene...

Riding a three-game winning streak, the Duke women's basketball team (6-3) will host 22nd-ranked South Carolina (5-4) Sunday, Dec. 9 at 2 p.m., in Cameron Indoor Stadium.

The game will be broadcasted live on ACC Network Extra with Ryan Craig (PXP) and Debbie Taylor (Color) calling the action. It will also be carried on the Blue Devil IMG Sports Network via 620 AM, 99.3 FM, 96.5 FM, www.GoDuke.com, TuneIn app and www.GoDuke.com with Chris Edwards (PXP) and Rebecca Greenwell (Color) on the air beginning at 1:45 p.m. (ET).

Probable Duke Starters...

No.	Name	Pos.	PPG	RPG	APG	Notes
5	Leaonna "Neah" Odom (Jr., 6-2)	F/G	15.9	8.2	2.2	Four double-doubles
24	Onome Akinbode-James (Fr., 6-3)	F	4.8	6.2	0.7	Double-Double at Wisconsin (14 pts, 14 reb)
3	Miela Goodchild (Fr., 5-10)	G	9.8	2.0	2.1	Tied career high with 14 points vs. UNLV
14	Faith Suggs (Sr., 6-1)	G/F	4.8	3.4	0.8	Matched career-high with 12 pts. vs. Ball St.
2	Haley Gorecki (R-Jr., 6-0)	G	16.6	5.6	3.4	Drained 19 three-pointers on season

Off the Bench...

No.	Name	Pos.	PPG	RPG	APG	Notes
12	Mikayla Boykin (R-Fr., 5-9)	G	11.0	4.0	6.0	Made season debut vs. UNLV
25	Jade Williams (So., 6-5)	F/C	6.4	5.0	0.7	Notched 11 points off bench at Maine
23	Rayah Craig (Fr., 5-10)	G	2.8	1.2	0.6	Scored 13 at Northwestern in debut
32	Jayda Adams (So., 6-0)	G	2.7	0.7	1.2	Season-high 6 points vs. UNLV
11	Sofia Roma (R-Sr., 6-2)	C	0.9	1.1	0.1	Graduate student in Duke FUQUA
44	Madison Treece (So., 6-4)	F	0.3	1.0	0.3	Worked on 3-point shot in offseason
13	Uchenna Nwoke (Fr., 6-6)	C	0.0	0.0	0.0	Will be big presence in post
30	Emily Schubert (R-So., 6-4)	C	0.0	0.0	0.0	Appeared in seven career games

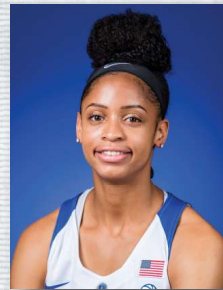
2018-19 Duke Radio/Television Roster



2 - Haley Gorecki
G • R-JR • 6-0
Palatine, Ill.
(William Fremd H.S.)



3 - Miela Goodchild
G • FR • 5-10
Queensland, Australia
(Moreton Bay College)



5 - Leaonna Odom
F • JR • 6-2
Lompoc, Calif.
(Chaminade)



11 - Sofia Roma
C • R-SR • 6-2
Richmond Hill, N.Y.
(Wagner College)



12 - Mikayla Boykin
G • R-FR • 5-9
Clinton, N.C.
(Clinton)



13 - Uchenna Nwoke
C • FR • 6-6
Grand Prairie, Texas
(South Grand Prairie)



14 - Faith Suggs
G/F • JR • 6-1
Flossmoor, Ill.
(Homewood Flossmoor)



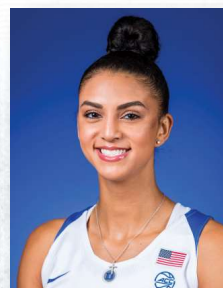
15 - Kyra Lambert
G • R-JR • 5-9
Cibolo, Texas
(Samuel Clemens)



23 - Rayah Craig
G • FR • 5-10
Scottsdale, Ariz.
(Desert Mountain)



24 - Onome Akinbode-James
F/C • FR • 6-3
Blairstown, N.J.
(Blair Academy)



25 - Jade Williams
F/C • SO • 6-5
The Colony, Texas
(The Colony)



30 - Emily Schubert
C • R-SO • 6-4
Elizabethton, Tenn.
(Elizabethton)



32 - Jayda Adams
G • SO • 6-0
Irvine, Calif.
(Mater Dei)



44 - Madison Treece
F • SO • 6-4
St. Peters, Mo.
(Rock Bridge)



Joanne P. McCallie
Head Coach
12th Season at Duke



Hernando Planells
Associate Head Coach
7th Season at Duke



Rene Haynes
Assistant Coach
5th Season at Duke



Sam Miller
Assistant Coach
4th Season at Duke

Quick Facts

LocationDurham, N.C.
Enrollment 6,485
Founded1838 Trinity College
Color Duke Blue & White
Nickname Blue Devils
Conference ACC
Arena Cameron Indoor Stadium (9,314)
President Vincent Price
Director of Athletics/Vice President Kevin White
Basketball Office Phone (919) 613-7565
Head Coach Joanne P. McCallie
Associated Head Coach Hernando Planells
Assistant Coaches Rene Haynes, Sam Miller
Athletic Trainer Summer McKeehan
Sport Performance Coach Ashleigh Beaver
Physical Therapist Jordan Busse

Basketball History

First Year of Basketball 1975-76
Overall All-Time Record914-398 (44 Years)
ACC Record339-213 (41 Years)
Home Record 475-123
Road Record 280-196
Neutral Record 159-79
NCAA Appearances/Last23/2017
NCAA Best Finish1999, 2006, NCAA Runner-Up
WNIT Appearances/Last 1/1986
ACC Tournament Titles '13, '11, '10, '04-00
ACC Regular Season Title '13, '12, '11, '10, '07, '05, '04, '03, '02, '01, '99, '98

Media Information

All coach and player interviews must be arranged through the sports information office by getting in touch with senior associate sports information director Lindy Brown at 919-684-2664 or lindy.brown@duke.edu.

Sports Information Office Address:
 Duke Athletics External Operations |
 287 Scott Family Athletics Performance Center
 Box 90557 | Durham, NC 27708

Breaking Down the Numbers

**Under Head Coach Joanne P. McCallie
 2007-08 through 2018-19
 (As of 12-7-18)**

- Record when Duke has:**
- Given up 40 pts. or fewer: 41-0
 - Given up 50 pts. or fewer: 107-0
 - Given up 60 pts. or fewer: 19-10
 - Given up 70 pts. or fewer: 237-36
 - Given up more than 70 pts.: 16-44

- Scored 70+ points: 201-13
- Scored 80+ points: 15-3

What is Next?...

Duke will be off for exam break, before traveling to Corvallis, Ore., to take on Oregon State Thursday, Dec. 20 at 10 p.m. (ET). The game will be aired on the Pac-12 Network.

The Blue Devils will face their second straight ranked opponent and third this season.

Three Keys...

- Leaonna Odom has posted four double-doubles in nine games to open the season. Her four double-doubles ranks tied fourth in the ACC. Odom's four double-doubles through nine games is tied for the second most at Duke since 1998 -- Azura Stevens (5 in 2015-16) and Rebecca Greenwell (4 in 2013-14).
- Duke has held its last three opponents (Wisconsin - 53; Marist - 56; UNLV - 38) to season low points. The Blue Devil defense has held those opponents to only 49.0 points, 33.5 percent shooting, 25.0 percent from downtown and only 29.0 rebounds a game.
- The Blue Devils boast an eight-game winning streak at home in Cameron Indoor Stadium against ranked opponents. The last loss came Feb. 1, 2016 to third-ranked Notre Dame.

Storylines/Other Blue Devil Notes...

- Duke has won 23 straight home non-conference regular season contests with the last loss coming on Nov. 18, 2015 to 12th-ranked Texas A&M. During that stretch the Blue Devils have knocked off four ranked opponents.
- Onome Akinbode-James is one of seven freshmen in the ACC to notch double-doubles. She is one of only five freshmen in the Power Five to have a 14-point and 14-rebound game this season. She is one of only two to accomplish this on the road against a Power Five Conference team.
- Duke is one of only two ACC teams to feature at least two players averaging 15.0+ points and 5.5+ rebounds (Notre Dame).
- Haley Gorecki is tied for third in the ACC with four games with 19 or more points.
- Duke and Georgia Tech are the only two teams in the league to have four different freshmen who have scored 11 or more points in a game this season.
- Leaonna Odom ranks ninth in the ACC in field goal percentage with a 56.9 percentage, but is the only player in the league to attempt over 100 field goals and rank in the top 15 in percentage. Odom's 62 field goals made ranks fifth in the ACC.

- The Blue Devils had a season-high 13 steals against Marist and have notched 10 or more steals in six of nine games. Duke ranks fifth in the ACC with a 10.3 steals per game average.
- Duke has won 18 straight contests in the month of December in Cameron Indoor Stadium.
- Leaonna Odom is one of four players in the ACC averaging at least 15.5 points and 8.0 rebounds.
- Duke will feature a two inch height advantage when the Blue Devils and Gamecocks hit the hardwood Sunday. South Carolina features a 71.2 average height with seven players standing 6-1 or taller. Duke owns a 73.2 average height with 10 players 6-0 or taller.
- The Blue Devils have won 34 out of its last 36 home contests in Cameron Indoor Stadium.

Tale Of The Tape

Duke	Statistical Comparison	South Carolina
6-3.....	Record.....	5-4
.450.....	Field Goal Percentage.....	.420
.376.....	Opponent Field Goal Percentage.....	.397
.355.....	Three-Point Field Goal Percentage.....	.331
5.4.....	Three-Pointers Per Game.....	6.7
.615.....	Free Throw Percentage.....	.679
13.1.....	Offensive Rebounds Per Game.....	15.3
37.7.....	Rebound Average.....	39.2
+4.8.....	Rebound Margin.....	+2.1
65.8.....	Points Per Game.....	76.9
61.4.....	Points Allowed Per Game.....	66.0
+4.3.....	Point Differential.....	+10.9
3.3.....	Blocks Per Game.....	7.2
12.6.....	Assists Per Game.....	13.3
10.3.....	Steals Per Game.....	10.6
20.0.....	Turnovers Per Game.....	13.7

• Rayah Craig opened her Duke career with 13 points as she scored 11-of-her-13 in the second half at Northwestern. It marked the third-most points scored by a rookie in her debut under Coach P at Duke -- Rebecca Greenwell 17 on Nov. 16, 2014, Alexis Rogers 14 on Nov. 13, 2009).

• There are 26 returning double-digit scorers in the ACC in 2018-19 with every ACC team except for Pitt having at least one. Notre Dame and Syracuse have the most with four each. Duke features only one (Haley Gorecki). Seven ACC teams return two or more.

• The 2018-19 Duke team is tied for the second youngest Duke team based on percentage of freshman and sophomores (69.23%). The 2011-12 was 75.0 percent freshmen and sophomores to lead the way. The nine freshmen and sophomores are tied for the

The Last Time Duke/USC Met...

December 3, 2017												
at Colonial Life Arena (Columbia, S.C.)												
Duke	FG	3FG	FT	REB	PF	TP	A	T	B	S	Min	
Brown g	5-14	1-4	2-2	0-1-1	1	13	4	0	0	3	34	
Odom f	3-11	0-0	0-0	0-1-1	3	6	1	2	3	2	34	
Boykin g	0-4	0-2	1-2	0-2-2	0	1	4	2	0	0	17	
Greenwell g	3-8	0-2	2-2	2-4-6	0	8	2	2	1	2	38	
Mathias f	7-9	0-0	2-2	2-4-6	5	16	1	2	2	0	29	
Gorecki	0-2	0-1	0-0	0-2-1	1	0	2	4	0	0	13	
Suggs	0-0	0-0	0-0	0-0-0	1	0	0	0	0	0	7	
Faz Davalos	3-5	0-0	0-0	0-1-1	1	6	0	1	0	2	9	
Williams	1-1	0-0	0-2	2-0-2	3	2	0	0	0	0	3	
Adams	0-1	0-0	0-0	0-0-0	0	0	0	0	0	0	4	
Treece	0-3	0-1	0-0	0-1-1	3	0	0	0	0	0	12	
TEAM	4-0-4											
Totals	22-58	1-10	7-10	10-16-26	18	52	14	13	6	9	200	
Pct.	37.9	10.0	70.0	DB: 3.2								

FG's (1Q: 6-13, 46.2%; 2Q: 5-11, 45.5%; 3Q: 5-18, 27.8%; 4Q: 6-16, 37.5%)
 3FG's (1Q: 1-4, 25.0%; 2Q: 0-1, 0.0%; 3Q: 0-3, 0.0%; 4Q: 0-2, 0.0%)
 FT's (1Q: 0-0, 0.0%; 2Q: 4-4, 100.0%; 3Q: 0-0, 0.0%; 4Q: 3-6, 50.0%)

South Carolina	FG	3FG	FT	REB	PF	TP	A	T	B	S	Min	
Wilson f	8-16	0-0	2-5	3-8-11	1	18	1	1	0	2	29	
Jennings f	9-15	0-0	3-8	8-2-10	3	21	2	3	1	2	33	
Climey g	3-8	0-2	0-0	1-3-4	1	6	5	1	1	1	37	
Jackson g	2-5	0-1	0-0	2-2-4	1	4	1	3	0	0	34	
Harris g	4-8	0-2	0-0	0-5-5	0	8	5	2	0	2	34	
Patrick	1-4	1-3	0-0	0-0-0	2	3	1	0	0	0	14	
Harrigan	3-4	0-0	2-2	0-1-1	0	8	1	1	1	0	14	
Williams	0-1	0-0	0-0	0-0-0	0	0	0	0	0	0	1	
Grissett	2-2	0-0	0-0	0-0-0	1	4	0	0	0	0	4	
TEAM	1-4-5											
Totals	32-63	1-8	7-15	15-25-40	9	72	16	12	3	7	200	
Pct.	50.8	12.5	46.7	DB: 6.1								

FG's (1Q: 8-15, 53.3%; 2Q: 9-18, 50.0%; 3Q: 8-17, 47.1%; 4Q: 7-13, 53.8%)
 3FG's (1Q: 0-2, 0.0%; 2Q: 1-3, 33.3%; 3Q: 0-2, 0.0%; 4Q: 0-1, 0.0%)
 FT's (1Q: 2-2, 100.0%; 2Q: 1-4, 25.0%; 3Q: 1-3, 33.3%; 4Q: 3-6, 50.0%)

Officials: Mark Zentz, Cameron Inouye, Denise Brooks
 Attendance: 13,054 • Technical Fouls: None

Score by Periods	1st	2nd	3rd	4th	Total
Duke	13	14	10	15	52
South Carolina	18	20	17	17	72

South Carolina Series Game-by-Game

Date.....	(DU Rank)	Site (USC Rank)	Result
Nov. 25, 2001.....	#9/7	Duke.....	L, 81-87
Mar. 25, 2002.....	#3/3	NCAA Tourney #13/13.....	W, 77-68
Dec. 7, 2014.....	#8/7	Duke #1/2.....	L, 50-51
Dec. 6, 2015.....	#14/13	USC #2/2.....	L, 55-66
Dec. 4, 2016.....	Duke #3/3.....		W, 74-63
Dec. 12, 2017.....	#14/16	USC #5/6.....	L, 52-72
Largest margin of victory by DU:..... 9 (Mar. 25, 2002)			
Largest margin of victory by USC:..... 20 (Dec. 12, 2017)			
Most points scored by DU:..... 81 (Nov. 25, 2001)			
Most points scored by USC:..... 87 (Nov. 25, 2001)			
Fewest points scored by DU:..... 50 (Dec. 7, 2014)			
Fewest points scored by USC:..... 51 (Dec. 7, 2014)			
Most consecutive wins by DU:..... 1			
Most consecutive wins by USC:..... 2			
Overall series record:..... 2-4			
At Duke:..... 1-2			
At South Carolina:..... 0-2			
Neutral:..... 1-0			
In NCAA Tournament:..... 1-0			
Current streak:..... L 1			

most under Coach P at Duke (2015-16 and 2011-12).
 • Duke was one of the best teams in the nation a year ago in opponent paint scoring holding teams to only 19.97 points a game. This ranked as the second-lowest for the Blue Devils over the last seven years (19.06 in 2014-15).

• In terms of the youth of the ACC, Duke's 69.23 percent of freshmen and sophomores is the fourth-highest -- Georgia Tech (76.92), Boston College (75.0) and Florida State (72.73).

• Duke returns just 39.7 percent of its scoring from the 2017-18 season. It is the lowest returning scoring percentage since the conclusion of the 2013-14 season. The Blue Devils lost 43.7 points and 60.3 percent of scoring. It is the most since the 2013-14 season, which Duke lost 66.9 percent of its scoring.

• Duke graduated two of the best scorers in Blue Devil history -- Rebecca Greenwell (1,874 points) and Lexie Brown (1,263 points in two years). They were one of the most dynamic scoring duos in the nation the last two years and Duke will have a much different look in 2018-19 without those guards.

• All 29 of Duke's 2018-19 contests will be aired on some type of television between ESPN+, ACC Network Extra, ESPN2, RSN-TV, PAC 12 Network and Big Ten Network.

• Follow @DukeWBB and @CoachPDuke on Twitter to get the latest updates on Duke women's basketball. Also, "Like" Duke Women's Basketball on Facebook to get the latest videos, pictures and more. DWB is on Instagram at dukewbb.

A Look at South Carolina...

South Carolina enters the contest with a 5-4 record and ranked 22nd nationally. On the season, Te'a Cooper (14.0 points, 12 treys), Tyasha Harris (10.9 points, 10 treys) and Alexis Jennings (9.1 points, 5.8 rebounds) have paced the Gamecocks.

This will mark South Carolina's second away game of the season as the Gamecocks defeated Alabama State to open the year.

The Series with South Carolina...

Duke will host South Carolina as the two programs face off against one another for the seventh all-time meeting.

The Gamecocks present one of the more challenging non-conference opponents for the Blue Devils this season, as Duke holds an all-time mark of 2-4 in the series. The last two games between the two resulted in a split, with South Carolina coming out on top a season ago and Duke claiming a victory at home in 2016.

Overall, Duke is 1-2 at home against the Gamecocks and averaging 68.3 points in those three contests.

On the other hand, South Carolina has averaged 67 points on its road trips to Durham.

Coach P holds a 1-3 record against the Gamecocks, with all four games coming from her tenure at Duke.

Duke Versus the SEC...

Duke boasts a 40-24 record in career meetings against the Southeastern Conference -- Alabama (2-1), Arkansas (2-1), Auburn (5-0), Florida (2-1), Georgia (4-0), Kentucky (6-2), LSU (3-2), Missouri (0-1), Mississippi State (2-0), South Carolina (2-4), Tennessee (6-5), Texas A&M (1-4) and Vanderbilt (5-3).

It will mark the second SEC team Duke has faced this season as Duke dropped a 62-54 decision to Missouri.

Coach P owns a record of 22-23 against the SEC.

Boykin Impressive in Season Debut...

Duke redshirt freshman Mikayla Boykin made her 2018-19 debut Thursday against UNLV and was very impressive with 11 points, six assists, a career-high five steals and four rebounds in 20 minutes.

Boykin started the third quarter and sparked the Blue Devils to an impressive second half outscoring the Lady Rebels, 41-21.

Her debut came 361 days since she tore her ACL Dec. 10, 2017 against Winthrop.

Boykin received a medical redshirt for this past season and will have four years of eligibility remaining.

Three-Point Duo...

Redshirt junior Haley Gorecki and freshman Miela Goodchild have combined to drain 38 three-pointers on the season. This ranks 14th in the NCAA, fourth among Power Five Conferences and third in the ACC.

The top duos in the ACC are Miranda Drummond and Gabrielle Cooper of Syracuse (49) and Taylor Emery and Dara Mabrey of Virginia Tech (42).

Big Down the Stretch...

Redshirt junior Haley Gorecki has scored 50 of her 149 points in the fourth quarter this season. She tallied 10 points against Washington, Missouri and Wisconsin. In those three games, Gorecki scored 30 of Duke's 60 points.

Leaonna Odom has scored 40 of her 143 points in the fourth quarter as well, while hitting 61.5 percent of her field goals.

Overall, Odom and Gorecki have scored 90 of

**Joanne P. McCallie
Head Coach**



COACHING HONORS

National Coach of the Year

Associated Press.....	2005
Basketball Times.....	2005
Nike.....	2005

Conference Coach of the Year

Atlantic Coast Conference.....	2010, 2012, 2013
Big Ten.....	2005
America East.....	1999
North Atlantic.....	1995 & 1996

** First D-I coach to win Coach of the Year honors in four different conferences*

Basketball Coaches Association Michigan

College Coach of the Year

Michigan State.....	2005
---------------------	------

COACHING HIGHLIGHTS

NCAA National Championship Game.....	1
.....	(2005)
NCAA Final Four.....	1
.....	(2005)
NCAA Elite Eight.....	5
.....	(2005, 2010, 2011, 2012, 2013)
NCAA Sweet Sixteen.....	9
.....	(2005, '06, '08, '10, '11, '12, '13, '15, '18)
NCAA Tournament Bids.....	21
.....	(1995, '96, '97, '98, '99, 2000, '03, '04, '05, '06, '07, '08, '09, '10, '11, '12, '13, '14, '15, '17, '18)

RECORD BREAKDOWN

Overall.....	619-231 (27 Years)
Record at Duke.....	303-83 (12 Years)
Atlantic Coast Conference.....	132-38 (11 Years)
ACC Tournament.....	19-8 (11 Appearances)
NCAA Tournament.....	31-21 (21 Appearances)
Record at Michigan State.....	149-75 (7 Years)
Big Ten (while at MSU).....	68-44 (7 Years)
Record at Maine.....	167-73 (8 Years)
North Atlantic (while at Maine)....	48-14 (4 Years)
America East (while at Maine)....	61-11 (4 Years)
Home.....	335-75 (27 Years)
Away.....	204-111 (27 Years)
Neutral.....	80-45 (27 Years)

Streaks

Overall	Won 3
Unranked teams anywhere	Won 4
Ranked teams anywhere	Lost 2
Home	Won 6
Home ACC	Won 3
Home non-conference	Won 12
Home unranked	Won 17
Home unranked non-conference	Won 11
Home ranked teams	Won 1
Road	Won 2
Road ACC	Lost 1
Road ranked teams	Won 1
Road unranked teams	Won 2
Neutral	Lost 1
Neutral ranked teams	Lost 2
Neutral unranked teams	Won 1

Consecutive Games with a 3-Pointer Made

Miela Goodchild	8
Haley Gorecki	6
Jayda Adams	3
Mikayla Boykin	1

Consecutive Free Throws Made

Mikayla Boykin	5
Haley Gorecki	3
Onome Akinbode-James	1
Leaonna Odom	1
Rayah Craig	1
Madison Treece	1
Kyra Lambert	1
Sofia Roma	1
Jayda Adams	1

Consecutive Double-Figure Scoring Games

Leaonna Odom	12
Haley Gorecki	9
Miela Goodchild	1
Mikayla Boykin	1

Starts	Consecutive	Career
Leaonna Odom	17 (11-6)	53 (39-14)
Faith Suggs	12 (8-4)	17 (12-5)
Haley Gorecki	9 (6-3)	23 (17-6)
Miela Goodchild	7 (5-2)	7 (5-2)
Onome Akinbode-James	5 (4-1)	7 (5-2)
Kyra Lambert		55 (44-11)
Jade Williams		11 (7-4)
Mikayla Boykin		8 (6-2)
Rayah Craig		1 (1-0)

Games Played

Faith Suggs	101 (73-28)
Leaonna Odom	76 (58-18)
Kyra Lambert	66 (49-17)
Haley Gorecki	46 (33-13)
Jayda Adams	41 (29-12)
Jade Williams	41 (29-12)
Madison Treece	21 (19-2)
Sofia Roma	19 (14-5)
Mikayla Boykin	11 (9-2)
Onome Akinbode-James	9 (6-3)
Rayah Craig	9 (6-3)
Miela Goodchild	9 (6-3)
Emily Schubert	7 (7-0)
Uchenna Nwoke	3 (3-0)

Rankings

In the AP Top 25	--
------------------	----

Duke's 164 fourth quarter points in the fourth quarter.

At Home in Cameron...

In three games at home this season, the Blue Devils are 3-0 and are averaging 70.3 points a contest. The Blue Devils have hit 47.3 percent from the field and are featuring an +13.0 rebounding margin.

Leaonna Odom has averaged 18.0 points, 9.0 rebounds, 2.0 steals and 2.0 assists at home. She has hit 65.7 percent of her field goals.

Haley Gorecki has averaged 13.7 points, 6.0 rebounds, 3.3 steals and 2.7 assists.

Miela Goodchild has drained 7-of-11 three-pointers and averaged 11.0 points, 2.3 assists and 1.7 rebounds. She had 14 points and a career-high four rebounds versus UNLV.

Duke is holding opponents to 34.8 percent shooting and 52.7 points a game.

In the NCAA Stats...

Duke currently ranks 45th nationally with a 45.0 field goal percentage and 56th with a 10.3 steals per game average.

Haley Gorecki ranks 30th in steals per game (3.0), 28th in three-point field goals attempted (69), 62nd in minutes played per game (35.3) and 14th in steals (27).

Leaonna Odom ranks 28th in double-doubles (4) and 42nd in field goal percentage (56.9).

Gorecki Posting Impressive Numbers...

Duke redshirt junior Haley Gorecki is one of 10 players nationally and one of only two in Power Five conferences averaging over 16.5 points, 5.5 rebounds, 3.0 assists and 3.0 steals on the season

The only other Power Five conference player is Kennedy Leonard of Colorado.

Gorecki currently ranks tied seventh in the ACC in scoring (16.6), tied second in steals (3.0) and tied third in minutes played (35.6).

Akinbode-James Coming Up Big...

After being limited to playing time to open her collegiate career due to foul trouble, freshman Onome Akinbode-James has stepped up big time against Missouri and Wisconsin.

Seeing action in a season-high 26 and 29 minutes

The Rankings

Associated Press Poll (Dec. 3)	USA TODAY Coaches Poll (Dec. 5)
1. Connecticut (31)	1. Connecticut (31)
2. Notre Dame	2. Notre Dame
3. Oregon	3. Oregon
4. Baylor	4. Louisville
5. Louisville	5. Baylor
6. Mississippi State	6. Mississippi State
7. Maryland	7. Maryland
8. Oregon State	8. Oregon State
9. Tennessee	9. Tennessee
10. NC State	10. NC State
11. Stanford	11. Stanford
12. Texas	12. Texas
13. California	13. California
14. Minnesota	14. Syracuse
15. Syracuse	15. Marquette
16. Iowa	16. Iowa
17. Arizona State	17. DePaul
18. Marquette	18. Minnesota
19. Kentucky	19. Kentucky
20. DePaul	19. Arizona State
21. Drake	21. Drake
22. South Carolina	22. Gonzaga
23. Missouri	23. Miami
24. Gonzaga	24. South Carolina
25. Miami	25. Missouri

Duke in the Polls

	AP	USA TODAY
Preseason	21	20
Nov. 12	--	No Poll
Nov. 20	--	--
Nov. 27	--	--
Dec. 4	--	--

The Duke Roster

No.	Name (@Twitter Handle)	Ht.	Yr.	Pos.	Exp.	Hometown (High School/Last School)
2	Haley Gorecki (@HaleyGorecki)	6-0	R-Jr.	G	3V	Palatine, Ill. (William Fremd)
3	Miela Goodchild (@MielaGoodchild)	5-10	Fr.	G	HS	Brisbane, Queensland, Australia (Moreton Bay College)
5	Leaonna Odom	6-2	Jr.	F	2V	Lompoc, Calif. (Chaminade)
11	Sofia Roma	6-2	R-Sr.	C	TR-4V	Richmond Hill, N.Y. (Wagner College)
12	Mikayla Boykin (@mikayla_niyel)	5-9	R-Fr.	G	1V	Clinton, N.C. (Clinton)
13	Uchenna Nwoke (@UchennaNwoke_)	6-6	Fr.	C	HS	Grand Prairie, Texas (South Grand Prairie)
14	Faith Suggs (@faith_suggs)	6-1	Sr.	G/F	3V	Flossmoor, Ill. (Homewood Flossmoor)
15	Kyra Lambert (@bbballaholic_15)	5-9	R-Jr.	G	3V	Cibolo, Texas (Samuel Clemens)
23	Rayah Craig (@rayahcraig)	5-10	Fr.	G	HS	Scottsdale, Ariz. (Desert Mountain)
24	Onome Akinbode-James	6-3	Fr.	F/C	HS	Blairtown, N.J. (Blair Academy)
25	Jade Williams (@jadeswilliams25)	6-5	So.	F/C	1V	The Colony, Texas (The Colony)
30	Emily Schubert (@e_schubert35)	6-4	R-So.	C	2V	Elizabethton, Tenn. (Elizabethton)
32	Jayda Adams (@realjayadams)	6-0	So.	G	1V	Irvine, Calif. (Mater Dei)
44	Madison Treece (@TREECEmadison)	6-4	So.	F	1V	St. Peters, Mo. (Rock Bridge)

Head Coach: Joanne P. McCallie (Northwestern, '87) - @CoachPDuke

Associate Head Coach: Hernando Planells (Regis) - @hernandojr

Assistant Coach: Rene Haynes (Michigan State, '07) - @CoachHaynesDuke; Sam Miller (Adrian College, '10) - @SamMiller906

Special Assistant: Jim Corrigan (Duke, '80)

Duke Pronunciation Guide

Rayah Craig	RAY-ugh
Miela Goodchild	Mee-la
Haley Gorecki	Gore - wreck - e
Rene Haynes	Ree - Knee
Onome Akinbode-James	Uh-nuh-meh; Ah-ken-bode
Uchenna Nwoke	You-Chen-Nuh; Woah-kay
Leaonna Odom	Lee - AH - na
Joanne P. McCallie	mc - CAW - lee

against Missouri and Wisconsin, Akinbode-James grabbed a total of 25 boards in those games.

Akinbode-James averaged 9.5 points and 12.5 rebounds in those games, while hitting 47.1 percent of her field goals. This included her first collegiate double-double at Wisconsin with 14 points and 14 rebounds. She had eight points and 11 rebounds in the first half at Wisconsin.

Her 14 rebounds against Wisconsin was the most by any freshman in the ACC this season. To close the Gulf Coast Showcase, she pulled down a then career-high 11 rebounds against Missouri.

Adams Sparks off Bench...

Sophomore Jayda Adams provided a big spark off the bench at Wisconsin scoring a then season-high five points and blocking a career-high two shots in a season-high 19 minutes.

Adams had a big block at the end of the first half as time expired and drained her third three-pointer of the season in the second half during a key stretch.

Adams added another big three-pointer against Marist in the third quarter to spark the Blue Devils and then scored a season-high six points versus UNLV most recently. Adams has hit a three-pointer in three consecutive games and scored 14 points over that stretch. She had scored only 10 points the first six games of the season.

Over the last three games, Adams has played 46 minutes and hit 5-of-10 field goals. She has drained 3-of-5 treys, had two blocks and two steals.

Scoring Duo...

The duo of Haley Gorecki and Leaonna Odom currently stand as the fourth-highest scoring duo in the ACC --

Scoring Duo	Points
A.Ogunbowale/J.Young (ND)	42.1
S.Watts/J.Bailey (UNC)	32.7
A.Durr/S.Fuehring (LOU)	32.6
H.Gorecki/L.Odom (DU)	32.5
T.Emery/D.Mabrey (VT)	30.6

Foul Trouble...

With its young team, Duke continues to suffer foul trouble early in the season.

In the first half, Leaonna Odom had two fouls at Maine, vs. Elon and at Wisconsin, Faith Suggs had three fouls in Washington and Ball State along with two fouls at Wisconsin, Onome Akinbode-James had two fouls against Northwestern, Maine, Ball State, Missouri, Wisconsin and Marist and Jade Williams had two fouls versus Elon, Washington, Ball State and Wisconsin.

Goodchild Scoring...

After opening the season with four points on the road at Northwestern, freshman Miela Goodchild went on a four-game stretch where she scored double-digits in four straight contests. She averaged 12.3 points, 2.0 assists and 2.0 rebounds during that stretch. Goodchild hit 11-of-23 treys during those four games.

She tied a career high with 14 points versus UNLV as she drained 4-of-5 treys.

Goodchild owns 19 three-pointers made on the season, which ranks tied third among other ACC freshmen. She also ranks tied ninth in the ACC with a 42.9 three-point field goal percentage.

Player	3PM	Games
Marnelle Garraud (BC)	21	9
Dara Mabrey (VT)	21	9
Miela Goodchild (DU)	19	9
Elizabeth Balogun (GT)	16	9

Impressive 300 Wins...

With the win against Ball State, Duke head coach Joanne P. McCallie reached 300 wins at Duke in her 12 seasons. She became the quickest ACC coach to reach 300 wins at an institution in only 382 games.

McCallie was 15 quicker than the next closest coach, which was Kay Yow of NC State, which it took her 397 contests. In comparing two of the winningest coaches of all time Geno Auriemma (386) and Pat Summitt (397), Coach P was quicker than both of them.

From Downtown...

Redshirt junior Haley Gorecki currently owns 71 three-pointers over her first 46 games, which is currently ranked fourth in school history.

3PM	Player
97	Rebecca Greenwell, 2015-18
95	Lexie Brown, 2017-18
80	Nicole Erickson, 1998-99
71	Haley Gorecki, 2016-present
69	Abby Waner, 2006-09

On the Boards...

Duke has been big on the boards over the last five games featuring a +9.2 rebounding margin and have outrebounded its opponents in each of those contests.

This comes after the Blue Devils were outrebounded in three out of the first four games.

Young Team...

Duke features one of the youngest teams in NCAA Division I this season with an average age of 19.43 years old.

The squad is also the fifth youngest team Coach P has had in her 12 seasons with the Blue Devils. The 2011-12 roster featured a 19.00 average age.

Duke's current roster features five freshmen, which is the second-most on a squad under Coach P at Duke behind 2015-16 (6) and 2017-18 (6).

Youngest Teams in NCAA Division I

Rank	Team	Age
------	------	-----

Double-Doubles

Onome Akinbode-James (1)

2018-19 (1)
14 pts., 14 rebounds at Wisconsin

Haley Gorecki (2)

2018-19 (1)
21 pts., 10 assists vs. Maine

2017-18 (1)
13 pts., 10 rebounds vs. Maine

Kyra Lambert (1)

2016-17 (1)
12 pts., 13 assists at North Carolina

Leaonna Odom (8)

2018-19 (4)
14 pts., 14 reb. at Northwestern

23 pts., 10 reb. vs. Elon

19 pts., 10 reb. vs. Washington

20 pts., 11 reb. vs. Marist

2017-18 (3)
13 pts., 12 reb. at Villanova

14 pts., 10 reb. vs. Presbyterian

15 pts., 12 reb. vs. Florida State

2016-17 (1)
16 pts., 10 reb. at Pepperdine

Get to Know the Blue Devils Human Interest Ideas

Haley Gorecki Return After Two Hip Surgeries
After seeing action in only 14 games as a freshman, before suffering a hip injury. Gorecki missed the 2016-17 season recovering, before coming back last year. After being inserted into the starting lineup, Gorecki was one of the best players in the ACC. This was before she suffered another hip injury to the other hip. She has come back this season stronger than ever. The Duke staff kept her out of some of the summer workouts to try to keep her fresher for the season. Gorecki is expected to be one of the best players nationally in 2018-19

Nigerian Connection
Duke features two student-athletes from Nigeria on the roster -- Onome Akinbode-James and Uchenna Nwoke. The Blue Devils are adding another one in the next signing class as well.

Duke has players from Nigeria, Australia and Puerto Rico/Italy in 2018-19

Duke & The Ronald McDonald House
Redshirt junior Kyra Lambert has been volunteering at the Ronald McDonald House for a little over a year now. She tries to go once a week when her class schedule/workouts allow. She does guest services and helps out with whatever the managers need help with -- answering phones, getting supplies, helping cook/clean, etc. Duke women's basketball has had a special relationship with the Durham RMH and has been going for over 20 years. The Blue Devils started a tradition where families/visitors write on ceiling tiles and it continues on today.

1.	UMBC & SMU	19.0
3.	Oklahoma & Georgia Tech	19.1
5.	Wichita State	19.2
6.	Northern Kentucky	19.3
7.	Georgia Southern & Old Dominion	19.3
9.	Florida State	19.4
10.	Duke	19.4

Freshman Improvement...

Freshman Miela Goodchild improved from the first to second game of her collegiate career by 10 points, which is the most in school history. Goodchild had four points in the season opener and then had 14 in the second game.

The second-biggest improvement was by Sue Harnett in 1986-87 as she had 10 points in her debut and 19 in the second game.

In terms of the ACC, Goodchild had the second-biggest improvement by a rookie as Erica Martinsen of Virginia moved her scoring up 12 points over the first two games.

One of Tallest Teams...

Duke continues its theme of having tall teams in 2018-19 as the Blue Devils will feature fourth tallest team in school history standing an average of 73.21 inches.

The 73.21 average height is just shy of 2016-17 (73.39), 2014-15 (73.25) and 2011-12 (73.25). All four teams feature a 6-1 frame.

Duke is the tallest team in the ACC with a 6-1 average, while Wake Forest ranks second with a 72.57 ledger. In looking at the Blue Devils' non-conference opponents, Oregon State (73.75) just clips the Blue Devils.

The Blue Devils feature 10 players standing 6-0 or taller and seven at 6-2 or better on the 2018-19 roster.

Goodchild Wins Bronze in India...

Duke freshman Miela Goodchild guided Australia to the bronze medal of the FIBA Under-18 Asian Championship in India with a 75-58 victory over Korea in the third place game.

Goodchild, who is from Brisbane, Queensland, Australia, tallied a game-high 21 points to go along with nine rebounds to exact revenge on Korea, who knocked off Australia, 63-62, to conclude the group phase on Wednesday.

With Australia advancing to the semifinals in the Asian Championship, the Gems qualified for the 2019 Under-19 World Cup, which will be held in Thailand from July 20-28.

For the tournament, Goodchild averaged 17.7 points, 6.0 rebounds, 2.7 assists and 3.0 steals. Her 17.7 points per game ranked first in the championship. Her rebounding and assist numbers ranked 11th and 12th, respectively. Her 3.0 steals were fourth-best in the competition.

Akinbode-James Starts Early...

Duke freshman Onome Akinbode-James started the season opener at Northwestern to become the 28th Blue Devil to start their first collegiate contest. It also marked the eighth Duke freshman to start the season

opener under Joanne P. McCallie in her 12 years at Duke. She was limited to 16 minutes in the game due to picking up two fouls in the first minute of the game.

It also was the second year in a row that a freshman has started the season opener as Mikayla Boykin started the contest at Grand Canyon last year.

Sharpshooter Returns...

Of any returning ACC player who attempted over 100 three-pointers in 2017-18, Duke redshirt junior Haley Gorecki has the highest returning percentage of 42.3.

Gorecki hit 44-of-104 attempts for a 42.3 percentage last year.

<u>Player</u>	<u>Team</u>	<u>Yr</u>	<u>3PT</u>	<u>3PTA</u>	<u>3PT%</u>
Haley Gorecki	Duke	RJr.	44	104	42.3
Asia Durr	Louisville	Sr.	115	277	41.5
Paris Kea	UNC	Sr.	62	153	40.5
Miranda Drummond	Syr.	Sr.	84	209	40.2
Marina Mabrey	N. Dame	Sr.	85	218	39.0
Alayna Gribble	Pitt	Jr.	42	108	38.9
Taylor Emery	VT	Sr.	69	178	38.8

Blue Devils Lose Lambert for Season...

For the second straight season, Duke point guard Kyra Lambert will be sidelined as the redshirt junior reinjured her knee in the preseason. She had surgery November 1 for a meniscal tear and to reconstruct her ACL in her left knee.

Lambert, who was named to the Nancy Lieberman Award watch list the same week she was injured, was still going through rehab and had yet to be cleared for practices involving contact.

A native of Cibolo, Texas, Lambert had started 56-of-65 contests over her first two years prior to the injury in 2017, which was a freak contact injury in the NCAA Tournament first round against Hampton.

She started all 33 games as a sophomore, while averaging 7.8 points, 3.5 assists, 3.2 rebounds and 1.7 steals. Lambert was voted one of three captains for the 2017-18 campaign and one of four captains in 2018-19.

Lambert, who will graduate in May of 2019 with a degree in cultural anthropology and environmental science, still has two years of eligibility remaining as she will apply for a sixth year.

Standing Tall...

Duke features one of the tallest women's basketball players in school history on the roster as a rookie in 2018-19. Uchenna Nwoke out of Grand Prairie, Texas and South Grand Prairie H.S., stands 6-6.

Nwoke is tied for the third tallest student-athlete in Duke history.

Tallest Players in Duke History

1. Alison Bales (2004-07)	6-7
Lello Gebisa (2000-01)	6-7
3. Uchenna Nwoke (2018-19-present)	6-6
Azura Stevens (2015-16)	6-6
Michele Van Gorp (1998-99)	6-6

Nwoke is tied for the second-tallest player in the

ACC in 2018-19.

Tallest Players in the ACC in 2018-19

1. Felicia Aiyetotan, Virginia	6-9
2. Uchenna Nwoke, Duke	6-6
Naomi Van Nes, UNC	6-6
4. Elissa Cunane, NC State	6-5
Elizabeth Dixon, Georgia Tech	6-5

Planells to Coach New Zealand U17 Squad...

Duke associate head coach Hernando Planells has been selected as the head coach of the New Zealand Women's U17 National Team.

Planells was one of two coaches in the United States tabbed to New Zealand head coach positions as Aaron Fearn, an assistant coach at Charlotte, was tabbed the New Zealand Men's U17 National Team head coach.

Planells first action with New Zealand on the court will be at the 2019 Oceania Championships in New Caledonia in August of 2019.

Greenwell Moves to Radio Booth...

After closing her career as one of the all-time best scorers and the Duke record holder in three-pointers made and attempted, Rebecca Greenwell is moving to the radio booth to assist Chris Edwards on the call in 2018-19.

Greenwell is recovering from knee surgery following the conclusion of her collegiate career. While going through rehab, she has worked in the women's and men's basketball offices.

She will be providing color commentary along with Edwards during the season.

Roma in Duke Fuqua...

The Blue Devils currently feature one student-athlete, Sofia Roma, enrolled in the MMS Program at the Duke Fuqua School of Business. Roma enrolled in July.

Duke Captains...

The Blue Devils feature four captains in 2018-19 as redshirt senior Sofia Roma, redshirt junior Haley Gorecki, junior Kyra Lambert and senior Faith Suggs were selected.

2018-19 Honors

Kyra Lambert
Preseason

- Nancy Lieberman Award Watch List

Leaonna Odum
Preseason

- Cheryl Miller Award Watch List
- John R. Wooden Award Watch List
- Naismith Award Watch List

Jade Williams
Preseason

- Lisa Leslie Award Watch List

R-Senior Sofia Roma

2018-19 - Redshirt Senior Year

	Min	FG-A	3G-A	FT-A	OR/TOT	PFA	T	B	S	PTS	
at Northwest.	6	1-1	0-0	0-0	1-1	0	0	1	1	0	2
at Maine	7	0-0	0-0	0-0	0-0	2	0	0	0	0	0
Elon	1	0-0	0-0	0-0	0-0	1	0	1	0	0	0
vs. Washington	DNP - CD										
vs. Ball State	11	0-0	0-0	0-0	1-3	1	0	1	1	0	0
vs. Missouri	8	1-1	0-0	0-0	0-3	1	1	0	0	1	2
at Wisconsin	9	1-3	0-0	1-1	1-2	1	0	1	0	0	3
Marist	1	0-0	0-0	0-0	0-0	0	0	0	0	0	0
UNLV	1	0-0	0-0	0-0	0-0	1	0	0	0	0	0

2017-18 - Redshirt Junior Year

	Min	FG-A	3G-A	FT-A	OR/TOT	PFA	T	B	S	PTS	
at GCU	DNP - Injured										
High Point	DNP - Injured										
at Villanova	DNP - Injured										
at ODU	DNP - Injured										
Oregon State	DNP - Injured										
Presbyterian	DNP - Injured										
Ohio State	DNP - Injured										
at S.Carolina	DNP - Injured										
UNCG	DNP - Injured										
Winthrop	DNP - Injured										
Maine	DNP - Injured										
Wyoming	DNP - Injured										
Liberty	DNP - CD										
at Miami	DNP - CD										
at Louisville	DNP - CD										
NC State	DNP - CD										
at Wake Forest	DNP - CD										
Virginia	DNP - CD										
at Va. Tech	DNP - CD										
at UNC	DNP - CD										
Boston College	8	1-2	0-0	0-2	1-4	1	0	1	0	1	2
at Pittsburgh	6	1-1	0-0	0-0	0-2	1	0	1	0	0	2
Georgia Tech	7	0-0	0-0	0-0	0-0	0	0	2	0	0	0
Notre Dame	DNP - CD										
Wake Forest	13	2-3	0-0	1-3	3-4	2	1	0	0	1	5
at Clemson	7	0-1	0-0	0-0	0-0	0	0	2	0	1	0
at Syracuse	3	0-0	0-0	0-0	0-1	0	1	0	0	0	0
Florida State	9	0-2	0-0	0-0	1-2	2	0	0	0	0	0
North Carolina	9	0-1	0-0	0-0	0-2	0	1	0	0	0	0
vs. NC State	3	0-1	0-0	0-0	0-0	3	0	2	0	1	0
vs. Belmont	1	0-0	0-0	0-0	0-0	0	0	0	0	0	0
at Georgia	2	0-1	0-0	0-0	1-1	0	0	0	0	0	0
vs. UConn	3	0-0	0-0	0-0	0-0	1	0	0	0	0	0

Senior Faith Suggs

2018-19 - Senior Year

	Min	FG-A	3G-A	FT-A	OR/TOT	PFA	T	B	S	PTS	
at Northwest^	14	1-5	0-1	2-3	0-3	1	2	1	0	1	4
at Maine^	17	0-1	0-0	0-0	0-2	1	0	1	1	0	0
Elon^	26	6-7	0-0	0-1	3-4	0	0	1	0	3	12
vs. Wash.^	24	2-4	1-1	0-0	1-5	3	0	1	1	1	5
vs. Ball State^	26	4-5	0-0	4-4	2-6	3	1	3	0	1	12
vs. Missouri^	34	1-4	0-1	0-2	0-2	3	2	3	1	0	2
at Wisconsin^	13	1-2	0-0	1-2	0-3	3	0	4	0	1	3
Marist^	23	0-1	0-0	1-2	1-2	1	2	1	0	2	1
UNLV^	18	2-4	0-0	0-2	0-4	1	0	1	0	0	4

2017-18 - Junior Year

	Min	FG-A	3G-A	FT-A	OR/TOT	PFA	T	B	S	PTS	
at GCU	4	0-1	0-1	0-0	0-0	0	0	0	0	1	0
High Point	11	0-2	0-1	3-6	3-3	1	1	0	0	0	3
at Villanova	3	0-1	0-0	0-0	0-0	1	0	0	0	0	0
at ODU	6	0-1	0-0	0-0	1-2	1	0	0	0	0	0
Oregon State	DNP - CD										
Presbyterian	18	3-3	1-1	1-1	0-2	0	1	1	0	1	8
Ohio State	1	0-0	0-0	0-0	0-0	0	0	0	0	0	0
at S.Carolina	7	0-0	0-0	0-0	0-0	1	0	0	0	0	0
UNCG	13	1-1	0-0	0-0	0-0	1	2	0	0	0	2
Winthrop	13	3-4	0-0	2-2	3-5	2	1	0	0	0	8
Maine	26	2-4	1-1	0-2	1-3	2	0	1	0	0	5
Wyoming	25	2-4	1-2	0-0	1-2	2	1	0	0	2	5
Liberty	21	0-1	0-0	1-2	2-7	1	0	3	0	1	1
at Miami	4	0-0	0-0	0-0	1-1	0	0	1	0	0	0
at Louisville	6	0-1	0-0	0-0	0-0	0	0	0	0	0	0
NC State	8	1-1	1-1	1-2	0-1	0	0	0	0	0	4
at Wake Forest	2	0-1	0-0	0-0	0-0	0	0	1	0	0	0
Virginia	DNP - CD										

at Va. Tech	6	1-3	0-0	0-0	1-1	2	0	2	0	0	2
at UNC	5	0-0	0-0	2-2	0-0	1	0	1	0	0	2
at Pittsburgh	14	1-3	1-2	0-0	0-2	1	1	0	0	0	3
Georgia Tech	8	1-1	0-0	1-1	0-0	0	1	0	0	0	3
Notre Dame	6	0-1	0-1	0-0	0-0	1	0	1	1	0	0
Wake Forest	5	0-0	0-0	0-0	0-0	0	0	0	0	0	0
at Clemson	11	1-2	0-0	2-2	1-2	0	0	0	0	0	4
at Syracuse	1	0-0	0-0	0-0	0-1	1	0	1	0	0	0
Florida State	6	0-1	0-1	0-0	0-1	1	0	1	0	0	0
North Carolina	6	0-0	0-0	0-0	1-1	1	0	0	0	0	0
vs. NC State	15	0-0	0-0	0-0	0-0	1	0	1	0	0	0
vs. Belmont^	29	1-4	0-2	4-6	5-8	1	1	1	0	1	6
at Georgia^	26	2-5	1-2	1-3	0-4	1	0	1	0	2	6
vs. UConn^	28	0-4	0-3	0-0	0-1	0	1	0	0	0	0

2016-17 - Sophomore Year

	Min	FG-A	3G-A	FT-A	OR/TOT	PFA	T	B	S	PTS	
at Liberty	14	2-4	0-1	0-0	1-2	3	1	1	0	4	4
Penn	0+	0-0	0-0	0-0	0-0	0	0	0	0	0	0
Longwood	12	2-6	0-3	0-0	0-3	1	0	1	0	0	4
Grand Canyon	11	2-2	0-0	0-0	0-1	1	0	0	0	2	4
at Vanderbilt	1	1-1	0-0	0-0	0-0	1	0	0	0	0	2
Old Dominion	7	0-0	0-0	0-0	0-1	0	1	0	0	0	0
at L. Beach St.	6	2-4	1-2	0-0	1-1	0	1	0	0	2	5
at Pepperdine	7	0-2	0-1	0-0	0-1	0	0	0	0	1	0
at Rutgers	8	0-1	0-0	0-0	0-2	1	1	0	0	0	0
South Carolina	DNP - CD										
Elon	5	0-3	0-1	0-0	0-0	0	0	0	0	0	0
Kentucky	1	0-0	0-0	0-0	0-0	0	0	0	0	0	0
Louisville	DNP - CD										
at Ga. Tech	1	0-0	0-0	0-0	0-0	0	0	0	0	0	0
at Florida State	6	1-1	0-0	0-0	1-1	0	0	0	0	0	2
UNC	5	1-2	0-1	0-2	0-0	2	1	0	0	1	2
at NC State	5	1-2	0-1	0-0	1-1	0	0	0	0	0	2
Virginia Tech	6	0-1	0-0	0-0	0-0	1	0	0	0	0	0
at Boston Col.	10	0-2	0-1	0-0	1-1	0	0	3	0	1	0
at Notre Dame	1	0-0	0-0	0-0	0-1	1	0	0	0	0	0
Wake Forest	6	1-3	0-2	0-0	0-0	1	0	0	0	0	2
Clemson	12	1-3	0-2	0-0	1-1	2	1	1	0	1	2
at Virginia	8	0-3	0-2	0-0	0-0	0	1	0	0	0	0
Syracuse	4	0-1	0-0	0-0	1-2	0	0	0	0	0	0
Pitt	13	2-4	1-3	2-2	1-2	1	0	1	0	0	7
at Wake Forest	7	0-0	0-0	0-0	0-2	0	0	0	0	0	0
Miami	3	0-0	0-0	0-0	0-0	0	0	0	0	0	0
at UNC	4	0-0	0-0	0-0	0-0	0	1	0	0	0	0
vs. Syracuse	2	0-0	0-0	0-0	0-0	0	0	0	0	0	0
vs. Miami	2	0-0	0-0	0-0	0-0	0	0	0	0	0	0
vs. Notre Dame	5	0-0	0-0	0-0	0-0	0	0	0	0	0	0
Hampton	13	0-1	0-0	0-0	0-3	1	2	0	0	1	6
Oregon	6	0-1	0-1	0-0	0-0	0	0	0	0	0	0

2015-16 - Freshman Year

	Min	FG-A	3G-A	FT-A	OR/TOT	PFA	T	B	S	PTS	
at Penn	DNP - CD										
Winthrop	10	1-4	0-1	1-2	3-4	1	1	1	0	0	3
Texas A&M	3	0-0	0-0	0-0	0-0	1	0	0	0	0	0
Army	4	0-1	0-0	0-0	0-0	1	0	0	0	0	0
vs. Idaho	1	0-0	0-0	1-2	0-0	0	0	0	0	0	0
vs. Iowa State	6	3-4	0-0	0-0	0-1	2	1	0	0	1	6
vs. Texas State	11	0-0	0-0	1-2	0-0	1	0	0	0	0	1
Minnesota	5	0-2	0-1	0-0	0-1	1	0	0	0	0	0
at S. Carolina	DNP - CD										
UMass	6	1-2	1-2	0-0	0-1	1	0	1	0	0	3
Liberty	5	0-1	0-0	0-0	2-3	0	0	0	0	0	0
at Kentucky	DNP - CD										
WCU	16	3-4	1-1	1-1	0-3	0	0	2	0	0	8
UNCW	11	0-1	0-0	0-0	0-2	2	0	2	0	0	

Georgia Tech DNP - Injured
 at UNC DNP - Injured
 vs. UVA DNP - Injured
 vs. Notre Dame DNP - Injured

vs. Notre Dame 37 4-12 3-7 1-2 1-4 3 2 4 0 0 12

vs. Syracuse 12 2-3 0-0 2-2 0-1 1 0 1 0 1 12
 vs. Miami 25 5-5 0-0 3-4 1-2 2 0 1 0 0 13
 vs. Notre Dame 19 2-3 0-0 2-2 3-5 3 2 2 0 0 6
 Hampton^ 33 8-9 0-0 7-8 3-6 2 1 6 1 1 23
 Oregon^ 27 2-7 0-0 0-1 2-4 3 0 1 2 0 4

Redshirt Junior Kyra Lambert

2018-19 - Redshirt Junior Year

Min FG-A 3G-A FT-A OR/TOT PFA T B SPTS

Applying for medical redshirt

2017-18 - Redshirt Junior Year

Applying for medical redshirt

2016-17 - Sophomore Year

Min FG-A 3G-A FT-A OR/TOT PFA T B SPTS

at Liberty^	28	4-7	2-3	3-4	1-1	3	5	0	0	4	13
Penn^	33	4-6	2-3	1-1	0-4	1	2	1	0	1	11
Longwood^	25	3-8	0-0	0-3	6-6	1	4	2	0	3	6
Grand Canyon^	25	6-10	2-2	3-4	3-5	0	3	0	0	2	17
at Vanderbilt^	34	4-9	0-3	0-0	1-3	5	7	3	0	1	8
Old Dominion^	34	2-7	0-0	2-2	3-6	1	8	1	0	2	6
at L. Beach St.^	31	3-4	1-1	1-2	1-5	2	5	5	0	5	8
at Pepperdine^	26	2-5	2-4	2-2	3-6	0	6	3	0	5	8
at Rutgers^	27	4-7	0-1	1-2	0-5	0	4	2	0	0	9
South Carolina^	34	4-5	0-0	2-2	0-2	0	2	1	0	1	10
Elon^	31	0-4	0-0	2-2	0-4	3	2	2	1	2	2
Kentucky^	34	1-5	1-2	2-2	0-1	0	1	0	0	1	5
Louisville^	37	4-7	1-2	0-0	0-6	1	3	1	0	5	9
at Ga. Tech^	36	4-7	1-2	1-2	0-5	1	2	3	0	3	10
at Florida State^	33	5-12	0-2	2-2	1-2	0	2	3	1	1	12
UNC^	32	4-7	1-2	4-6	0-4	1	3	1	0	2	13
at NC State^	31	3-8	0-1	2-2	0-5	0	0	0	0	1	8
Virginia Tech^	34	4-9	2-3	0-0	0-6	1	3	2	1	2	10
at Boston Col.^	25	5-6	3-3	0-0	1-1	2	1	2	0	2	13
at Notre Dame^	34	1-8	0-1	0-0	1-3	2	4	2	0	1	2
Wake Forest^	30	1-4	0-2	0-0	1-4	2	5	3	0	2	2
Clemson^	21	1-6	0-2	0-0	1-3	2	1	4	0	1	2
at Virginia^	36	4-10	1-4	0-0	1-3	1	5	1	0	3	9
Syracuse^	29	3-7	0-2	0-0	0-2	3	5	3	2	1	6
Pitt^	24	3-10	0-2	2-4	0-2	1	1	2	0	1	8
at Wake Forest^	33	1-6	0-0	2-2	0-1	1	3	1	0	0	4
Miami^	25	1-8	0-1	3-4	2-5	0	3	2	0	1	5
at UNC^	35	5-9	1-3	1-1	1-6	1	13	2	0	0	12
vs. Syracuse^	35	1-3	1-1	0-0	0-9	2	2	2	0	0	3
vs. Miami^	27	2-5	1-3	1-2	0-3	3	3	2	0	1	6
vs. Notre Dame^	30	3-6	1-3	0-0	1-2	1	3	1	0	1	7
Hampton^	10	2-3	0-0	0-0	0-0	2	2	0	0	0	4
Oregon											

2015-16 - Freshman Year

Min FG-A 3G-A FT-A OR/TOT PFA T B SPTS

at Penn^	32	3-5	2-2	4-4	0-4	1	3	1	1	1	12
Winthrop^	22	3-7	0-2	2-3	0-1	3	4	3	0	1	8
Texas A&M^	40	2-12	1-5	3-4	1-3	4	4	1	0	3	8
Army^	35	0-4	0-2	0-0	0-3	1	1	1	1	2	0
vs. Idaho^	18	2-3	0-1	0-0	0-0	4	1	0	1	0	4
vs. Iowa State^	28	2-6	0-1	1-2	0-6	3	0	2	0	3	5
vs. Texas State^	20	3-5	0-2	2-2	2-4	0	4	0	0	1	8
Minnesota^	29	3-5	1-1	1-1	0-4	2	4	2	0	1	8
at S. Carolina^	34	6-9	3-4	1-2	0-1	2	1	1	0	2	16
UMass^	26	2-4	0-1	0-0	1-1	1	2	2	0	2	4
Liberty^	26	2-5	0-1	3-3	0-1	1	2	1	1	2	7
at Kentucky^	24	1-8	1-3	4-6	1-3	2	0	2	0	0	7
WCU^	22	2-2	0-0	0-0	1-2	3	4	2	0	0	4
UNCW^	17	3-4	0-0	1-2	1-4	2	1	2	0	1	7
at Syracuse^	25	0-3	0-0	0-0	0-4	4	4	5	0	0	7
Wake Forest	20	2-4	0-0	1-2	0-1	4	3	2	0	1	5
at Louisville	25	0-4	0-1	0-2	0-1	2	0	1	0	1	0
NC State^	34	5-6	1-1	1-1	0-2	5	1	2	0	1	12
Boston College^	31	2-6	0-1	2-2	0-1	3	7	4	0	3	6
at Clemson^	35	1-4	1-2	0-0	0-5	1	4	2	0	3	3
UNC^	30	3-7	1-2	2-2	0-3	4	4	3	0	1	9
at Pitt^	24	1-3	0-2	0-0	0-0	1	3	3	0	0	2
Notre Dame^	28	4-12	1-3	1-1	0-4	3	2	1	0	0	10
Virginia^	32	0-4	0-1	2-4	0-2	2	4	1	0	0	2
at Miami^	28	0-5	0-2	0-0	0-1	3	2	2	0	0	0
Florida State	29	2-5	0-1	0-3	0-4	4	1	3	0	2	4
at WFU	20	1-4	0-0	1-3	0-1	3	2	2	0	1	3
at Va. Tech	20	1-4	0-1	0-0	1-3	1	1	2	0	0	2
Georgia Tech	27	3-9	0-2	1-1	1-2	2	0	2	0	0	7
at UNC	25	5-7	3-4	1-1	1-6	2	7	1	1	1	14
vs. UVA	31	2-6	0-0	5-8	2-7	3	1	1	1	2	9

2018-19 - Junior Year

Min FG-A 3G-A FT-A OR/TOT PFA T B SPTS

at Northwest^	36	6-12	0-0	2-4	5-14	4	0	8	0	1	14
at Maine^	29	8-13	0-0	0-0	0-5	3	3	2	3	1	16
Elon^	33	10-14	0-0	3-4	2-10	3	3	2	0	0	23
vs. Wash.^	38	7-17	0-1	5-6	5-10	2	4	7	1	2	19
vs. Ball State^	31	6-14	0-0	1-4	3-9	2	6	7	0	1	13
vs. Missouri^	37	6-11	0-0	3-4	3-4	2	0	1	1	2	15
at Wisconsin^	29	6-7	0-0	0-1	2-5	4	1	7	0	2	12
Marist^	37	8-14	0-0	4-5	3-11	2	1	6	1	5	20
UNLV^	29	5-7	0-0	1-3	1-6	1	2	3	1	1	11

2017-18 - Sophomore Year

Min FG-A 3G-A FT-A OR/TOT PFA T B SPTS

at GCU^	27	5-8	0-0	3-3	3-7	4	0	4	0	3	13
High Point^	25	8-10	0-0	0-1	4-9	3	1	2	1	1	16
at Villanova^	38	5-10	0-0	3-4	7-12	2	1	4	1	1	13
at ODU^	16	1-5	0-0	1-2	3-5	4	0	2	0	1	3
Oregon State^	38	8-11	0-0	0-0	2-8	2	2	0	0	1	16
Presbyterian^	31	7-10	0-0	0-0	4-10	1	1	0	2	0	14
Ohio State^	34	3-8	0-0	0-0	2-13	3	1	1	4	2	6
at S. Carolina^	34	1-11	0-0	0-0	0-1	3	1	2	3	2	6
UNCG^	19	4-5	0-0	0-0	0-4	3	2	0	0	1	8
Winthrop^	24	4-5	0-0	0-0	2-5	0	2	0	1	1	8
Maine^	29	1-4	0-0	0-0	4-11	1	6	5	2	0	2
Wyoming^	29	1-3	0-0	0-0	4-6	1	1	2	3	1	2
Liberty^	28	3-5	0-0	0-1	0-7	2	0	2	6	2	6
at Miami^	35	5-10	0-0	2-2	3-7	1	0	3	1	1	12
at Louisville^	37	6-10	0-0	2-4	1-6	4	4	1	0	2	14
NC State^	29	1-3	0-0	0-0	1-3	4	5	3	0	0	2
at Wake Forest^	27	2-4	0-0	4-4	1-5	2	0	1	2	0	8
Virginia	33	3-4	0-0	1-2	2-9	3	2	2	1	2	7
at Va. Tech	19	1-2	0-0	1-2	0-1	3	2	1	3	0	3
at UNC	25	3-3	0-0	1-2	0-4	3	1	0	0	1	7
Boston College^	29	6-8	0-0	0-1	2-8	3	4	2	1	0	12
at Pittsburgh^	27	2-6	0-0	0-0	0-3	2	0	2	0	1	4
Georgia Tech	18	2-6	0-0	0-0	1-2	3	1	1	0	1	4
Notre Dame	34	5-13	0-0	1-2	4-5	3	1	4	0	0	11
Wake Forest	38	3-7	0-0	3-4	3-5	0	0	2	0	0	9
at Clemson^	28	5-9	0-0	0-3	1-4	3	2	0	1	2	10
at Syracuse^	36	6-8	0-1	4-8	3-4	1	2	3	0	3	16
Florida State^	39	5-19	0-0	5-7	7-12	0	2	1	1	2	15
North Carolina^	28	2-6	0-0	0-0	0-1	1	1	0	1	0	4
vs. NC State^	25	2-3	0-0	0-2	2-9	4	1	3	2	2	4
vs. Belmont^	37	11-18	0-0	3-5	3-6	3	4	0	1	2	25
at Georgia^	35	7-12	0-0	2-2	0-7	2	1	3	1	0	16
vs. UConn^	36	9-17	0-0	4-6	2-8	4	4	1	0	1	22

2016-17 - Freshman Year

Min FG-A 3G-A FT-A OR/TOT PFA T B SPTS

at Liberty	13	3-7	0-0	2-2	2-3	3	1	1	0	1	8
Penn	17	2-4	0-0	4-6	2-3	3	1	1	1	1	8
Longwood	24	4-9	0-0	0-0	3-5	2	1	0	0	5	8
Grand Canyon	21	6-8	0-0	0-0	1-6	3	1	1	1	0	12
at Vanderbilt	23	4-8	0-0	1-4	4-4	4	1	2	0	0	9
Old Dominion	18	3-8	0-0	2-3	2-3	4	1	2	0	1	8
at L. Beach St.	29	5-8	0-0	2-2	1-4	2	1	3	2	0	12
at Pepperdine	22	7-13	0-1	2-4	9-10	2	0	0	0	0	16
at Rutgers	22	3-3	0-0	1-2	3-3	1	0	0	1	1	7
South Carolina	27	3-8	0-1	0-0	3-6	2	1	0	0	5	6
Elon	22	2-5	0-0	4-6	0-1	2	1	2	1	0	8
Villanova^	33	3-5	0-0	1-3	2-4	1	1	3	1	0	7
Kentucky^	14	2-5	0-0	0-0	1-4	2	1	2	2	1	4
Louisville^	18	1-3	0-0	0-0	0-1	1	2	2	0	0	2
at Ga. Tech^	9	0-2	0-0	0-0	0-0	3	1	0	2	0	0
at Florida State^	31	3-7	0-0	1-2	4-6	2	0	0	1	2	7
UNC^	30	7-9	0-0	1-3	5-7	0	1	2	2	2	

Wyoming	DNP - Injured
Liberty	DNP - Injured
at Miami	DNP - Injured
at Louisville	DNP - CD
NC State	DNP - CD
at Wake Forest	DNP - CD
Virginia	DNP - CD
at Va. Tech	DNP - CD
at UNC	DNP - CD
Boston College	4 0-1 0-0 0-0 0-0 1 0 0 0 0 0
at Pittsburgh	DNP - CD
Georgia Tech	DNP - CD
Notre Dame	DNP - CD
Wake Forest	DNP - CD
at Clemson	1 0-0 0-0 0-0 0-0 0 0 0 0 0 0
at Syracuse	DNP - CD
Florida State	DNP - CD
vs. NC State	DNP - CD
vs. Belmont	DNP - CD
at Georgia	1 0-0 0-0 0-0 0-0 0 0 0 0 0 0
vs. UConn	DNP - CD

at Wisconsin	24 1-3 0-0 0-0 3-5 5 1 1 0 1 2
Marist	34 5-9 0-0 1-4 2-8 0 0 5 1 0 11
UNLV	18 2-5 0-0 0-0 2-6 3 1 1 2 0 4

Florida State	DNP - Injured
North Carolina	DNP - Injured
vs. NC State	DNP - Injured
vs. Belmont	DNP - Injured
at Georgia	DNP - Injured
vs. UConn	DNP - Injured

2017-18 - Freshman Year

	Min	FG-A	3G-A	FT-A	OR/TOT	PFA	T	B	S	PTS
at GCU	6	0-2	0-0	0-0	1-2	0	0	0	0	0
High Point	14	2-3	0-0	0-0	3-5	3	1	1	2	1
at Villanova	13	0-2	0-0	2-4	4-7	4	2	2	0	2
at ODU	15	2-4	0-0	1-4	1-3	2	1	3	1	0
Oregon State	1	0-1	0-0	0-0	1-1	0	0	1	0	0
Presbyterian	5	3-4	0-0	0-2	0-1	0	1	1	0	1
Ohio State	7	0-1	0-0	0-0	0-1	0	0	1	1	0
at S. Carolina	3	1-1	0-0	0-2	2-2	3	0	0	0	2
UNCG	10	3-4	0-0	0-0	0-2	2	0	0	0	6
Winthrop	17	2-3	0-0	1-3	3-6	2	1	4	2	5
Maine	19	0-0	0-0	1-4	2-4	3	0	1	3	1
Wyoming	14	4-5	0-0	0-2	2-5	1	1	3	2	8
Liberty	9	0-0	0-0	0-0	0-0	5	0	0	0	0
at Miami	8	0-2	0-0	0-0	1-2	3	0	1	1	0
at Louisville	31	2-5	0-0	0-0	3-6	4	0	1	4	1
NC State^	27	3-6	0-1	0-0	1-7	2	1	1	3	2
at Wake Forest^	24	3-3	0-0	0-0	0-3	4	0	1	2	6
Virginia^	16	2-5	0-0	0-0	2-3	2	1	2	0	4
at Va. Tech^	24	2-6	0-0	3-4	1-3	1	3	0	2	7
at UNC^	29	3-3	0-0	0-0	0-3	1	2	4	2	6
Boston College	12	0-2	0-0	0-0	0-0	1	2	0	0	1
at Pittsburgh	5	1-1	0-0	0-1	1-3	3	0	1	0	2
Georgia Tech^	31	7-8	0-0	2-6	3-8	3	0	2	6	1
Notre Dame^	15	4-8	0-0	0-1	3-3	4	0	2	0	2
Wake Forest	13	1-3	0-0	2-4	0-0	1	0	1	1	0
at Clemson	15	3-5	0-0	0-0	2-3	1	1	2	1	0
at Syracuse	13	1-3	0-0	0-0	0-3	0	1	1	3	0
Florida State	30	3-9	0-0	2-2	4-7	1	2	1	0	8
North Carolina	23	3-5	0-0	0-0	0-1	2	0	5	2	1
vs. NC State	17	0-1	0-0	0-0	2-5	3	0	2	1	0
vs. Belmont	7	0-0	0-0	0-0	0-0	2	0	0	0	0
at Georgia	9	0-1	0-0	0-0	0-1	1	0	2	0	0
vs. UConn	5	3-5	0-0	1-1	0-0	2	0	1	1	0

Freshman Rayah Craig

2018-19 - Freshman Year

	Min	FG-A	3G-A	FT-A	OR/TOT	PFA	T	B	S	PTS
at Northwest.	20	5-8	1-2	2-2	1-2	6	0	2	0	1
at Maine^	13	0-1	0-1	0-0	0-2	0	1	2	0	1
Elon	17	3-5	2-4	0-0	0-1	3	1	1	0	8
vs. Wash.	9	0-2	0-1	0-0	0-0	1	1	3	0	0
vs. Ball State	9	1-2	1-1	0-0	0-1	1	1	1	1	0
vs. Missouri	4	0-1	0-1	0-0	0-0	0	0	0	0	2
at Wisconsin	3	0-1	0-0	0-0	1-1	1	0	1	0	0
Marist	7	0-0	0-0	0-0	1-2	0	1	0	0	1
UNLV	7	0-1	0-0	1-2	1-2	0	0	1	0	1

Freshman Miela Goodchild

2018-19 - Freshman Year

	Min	FG-A	3G-A	FT-A	OR/TOT	PFA	T	B	S	PTS
at Northwest.	26	1-4	0-2	2-2	1-2	3	1	4	0	3
at Maine	30	5-10	4-8	0-0	0-2	1	0	2	1	14
Elon^	27	4-8	1-3	1-2	0-1	4	3	2	1	10
vs. Wash.^	32	4-9	3-5	1-1	0-2	2	3	4	0	12
vs. Ball State^	32	5-9	3-7	0-0	0-3	2	2	8	1	13
vs. Missouri^	35	2-5	1-3	0-0	0-3	3	2	4	0	5
at Wisconsin^	35	3-9	1-4	0-0	1-1	2	4	2	0	7
Marist^	38	3-7	2-3	1-2	0-0	0	3	2	0	9
UNLV^	28	5-9	4-5	0-0	1-4	1	1	3	0	14

Freshman Onome Akinbode-James

2018-19 - Freshman Year

	Min	FG-A	3G-A	FT-A	OR/TOT	PFA	T	B	S	PTS
at Northwest.^	16	1-4	0-0	3-4	2-2	4	2	2	0	1
at Maine^	19	1-2	0-0	0-0	0-3	2	1	1	0	2
Elon	24	2-4	0-0	0-2	3-6	2	0	2	4	3
vs. Wash.	15	0-0	0-0	0-0	1-3	1	0	3	0	2
vs. Ball State^	21	3-5	0-0	1-3	3-6	4	1	6	1	2
vs. Missouri^	26	2-5	0-0	1-2	4-11	3	0	4	0	5
at Wisconsin^	29	6-12	0-0	2-2	4-10	4	0	1	0	2
Marist^	12	1-2	0-0	1-1	2-4	4	1	0	0	3
UNLV^	27	1-6	0-0	1-2	3-7	1	1	2	1	3

Freshman Uchenna Nwoke

2018-19 - Freshman Year

	Min	FG-A	3G-A	FT-A	OR/TOT	PFA	T	B	S	PTS
at Northwest.		DNP	-	CD						
at Maine		DNP	-	CD						
Elon	1	0-0	0-0	0-0	0-0	1	0	1	0	0
vs. Wash.		DNP	-	CD						
vs. Ball State	1	0-0	0-0	0-0	0-0	0	0	0	0	0
vs. Missouri		DNP	-	CD						
at Wisconsin		DNP	-	CD						
Marist		DNP	-	CD						
UNLV	1	0-0	0-0	0-0	0-0	0	0	0	0	0

Sophomore Madison Treece

2018-19 - Sophomore Year

	Min	FG-A	3G-A	FT-A	OR/TOT	PFA	T	B	S	PTS
at Northwest.	4	0-0	0-0	0-0	0-0	2	1	0	0	0
at Maine		DNP	-	CD						
Elon	6	0-1	0-1	1-2	4-4	1	0	2	0	1
vs. Wash.		DNP	-	Sick						
vs. Ball State		DNP	-	Sick						
vs. Missouri		DNP	-	Sick						
at Wisconsin	1	0-0	0-0	0-0	0-0	0	0	0	0	0
Marist		DNP	-	CD						
UNLV	6	0-0	0-0	0-0	0-0	1	0	1	0	0

2017-18 - Freshman Year

	Min	FG-A	3G-A	FT-A	OR/TOT	PFA	T	B	S	PTS
at GCU	2	0-0	0-0	0-0	0-0	0	0	0	0	0
High Point	3	0-2	0-0	0-0	0-0	1	0	0	0	0
at Villanova		DNP	-	CD						
at ODU	3	0-1	0-0	2-4	1-1	2	0	0	1	2
Oregon State	1	0-0	0-0	0-0	0-0	0	0	0	0	0
Presbyterian	18	2-3	0-0	1-1	1-1	1	0	1	0	5
Ohio State		DNP	-	CD						
at S. Carolina	12	0-3	0-1	0-0	0-1	3	0	0	0	0
UNCG	6	1-2	0-0	0-0	0-2	0	1	0	0	2
Winthrop	14	2-2	0-0	1-2	1-1	0	3	0	0	1
Maine	9	0-2	0-0	1-2	2-5	0	0	1	0	1
Wyoming	10	0-3	0-2	0-0	0-1	0	1	1	0	0
Liberty	5	0-0	0-0	1-2	0-0	0	0	0	0	1
at Miami		DNP	-	CD						
at Louisville		DNP	-	CD						
NC State		DNP	-	CD						
at Wake Forest	3	0-0	0-0	0-0	0-0	0	0	0	0	0
Virginia		DNP	-	CD						
at Va. Tech		DNP	-	CD						
at UNC		DNP	-	CD						
Boston College	1	0-1	0-0	1-2	1-1	0	0	0	0	1
at Pittsburgh		DNP	-	CD						
Georgia Tech	0+	0-0	0-0	0-0	0-1	0	0	0	0	0
Notre Dame		DNP	-	CD						
Wake Forest		DNP	-	CD						
at Clemson	1	0-0	0-0	0-0	0-0	0	0	0	0	0
at Syracuse		DNP	-	CD						
Florida State		DNP	-	CD						
North Carolina	2	0-1	0-0	0-0	0-1	0	0	0	0	0
vs. NC State		DNP	-	CD						
vs. Belmont		DNP	-	CD						
at Georgia	3	0-1	0-0	0-0	0-1	0	0	0	0	0
vs. UConn		DNP	-	CD						

Sophomore Jade Williams

2018-19 - Sophomore Year

	Min	FG-A	3G-A	FT-A	OR/TOT	PFA	T	B	S	PTS
at Northwest.^	33	2-7	0-0	2-2	3-4	4	0	0	0	6
at Maine	34	5-7	0-0	1-6	3-6	1	1	1	0	11
Elon^	16	3-8	0-0	2-2	5-8	4	1	2	1	8
vs. Wash.^	26	3-7	0-0	0-0	5-5	4	0	0	0	3
vs. Ball State	22	4-6	0-0	1-1	2-3	5	2	3	2	1
vs. Missouri	8	0-2	0-0	1-2	0-0	3	0	1	0	1

Redshirt Freshman Mikayla Boykin

2018-19 - Redshirt Freshman Year

	Min	FG-A	3G-A	FT-A	OR/TOT	PFA	T	B	S	PTS
at Northwest.		DNP	-	Injured						
at Maine		DNP	-	Injured						
Elon		DNP	-	Injured						
vs. Wash.		DNP	-	Injured						
vs. Ball State		DNP	-	Injured						
vs. Missouri		DNP	-	Injured						
at Wisconsin		DNP	-	Injured						
Marist		DNP	-	CD						
UNLV	20	4-8	1-3	2-2	1-4	0	6	3	0	5

2017-18 - Freshman Year

Other Miscellaneous Statistics...

Defense Force 10-Second Violation
 Opponent.....2
 Duke

Defense Force Shot Clock Violation
 Opponent.....3
 Duke

Defense Force Five-Second Call
 Opponent.....1
 Duke

Points In The Paint
 Opponent.....202
 Duke

Points Off Turnovers
 Opponent.....153
 Duke

Technical Fouls
 Opponent.....-
 Duke

Jump Balls Controlled
 Opponent.....3
 Duke

Odom.....9

Largest Halftime Lead
 17 (44-27) vs. Ball State, 11.24.18

Largest Halftime Deficit
 13 (37-24) vs. Washington, 11.23.18

Largest Duke Lead
 21 vs. Ball State, 11.24.18

Largest Duke Deficit
 28 at Northwestern, 11.11.18

Largest Duke Win
 17 (81-64) vs. Elon, 11.18.18

Largest Duke Loss
 26 (84-58) at Northwestern, 11.11.18

Longest Winning Streak
 3

Longest Losing Streak
 1

Largest Home Crowd
 3,313 vs. Elon, 11.18.18

Largest Road Crowd
 3,483 at Wisconsin, 11.28.18

Highest FG% in 1st Quarter
 Duke62.5 vs. Elon (11.18.18)
 Opp.....45.5 by Elon (11.18.18)

Highest FG% in 2nd Quarter
 Duke77.8 vs. Ball State (11.24.18)
 Opp....61.5 by Washington (11.23.18)

Highest FG% in 3rd Quarter
 Duke69.2 at Maine (11.15.18)
 Opp..56.3 by Northwestern (11.11.18)

Highest FG% in 4th Quarter
 Duke69.2 vs. Ball State (11.24.18)
 Opp.....80.0 by Wisconsin (11.28.18)

Lowest FG% in 1st Quarter
 Duke28.6 at Wisconsin (11.28.18)
 Opp.....16.7 by Missouri (11.25.18)

Lowest FG% in 2nd Quarter
 Duke33.3 at Maine (11.15.18)
 Opp.....25.0 by Wisconsin (11.28.18)

Lowest FG% in 3rd Quarter
 Duke21.4 at Wisconsin (11.28.18)
 Opp.....21.4 by Wisconsin (11.28.18)

Lowest FG% in 4th Quarter
 Duke .30.0 at Northwestern (11.11.18)
 Opp.....26.7 by Elon (11.18.18)

DUKE
Top-Five FG% in Game
 54.2 at Maine, 11.15.18
 52.2 vs. Ball State, 11.24.18
 52.3 vs. Elon, 11.18.18
 45.3 vs. UNLV, 12.6.18
 43.1 at Wisconsin, 11.28.18

Top-Five Lowest FG% in Game
 54.2 at Maine, 11.15.18
 52.2 vs. Ball State, 11.24.18
 52.3 vs. Elon, 11.18.18
 45.3 vs. UNLV, 12.6.18
 43.1 at Wisconsin, 11.28.18

OPPONENT
Top-Five FG% in Game
 47.2 by Washington, 11.23.18
 44.3 by Maine, 11.15.18
 40.6 by Northwestern, 11.11.18
 39.6 by Elon, 11.18.18
 36.0 by Wisconsin, 11.28.18

Top-Five Lowest FG% in Game
 47.2 by Washington, 11.23.18
 44.3 by Maine, 11.15.18
 40.6 by Northwestern, 11.11.18
 39.6 by Elon, 11.18.18
 29.4 by UNLV, 12.6.18

Duke Records Broken/Tied in 2018-19...

- The win over Ball State (11.24.18) gave head coach Joanne P. McCallie her 300th career victory at Duke. She accomplished this mark in only 382 games becoming the quickest ACC coach in league history to reach 300 victories at an institution. The next closest coach was Kay Yow (397 games).

More Duke Numbers, Streaks

Duke all-time record	913-398
Duke all-time ACC record (regular season only)	380-212
Duke's all-time overtime record	18-13
Consecutive games with at least one three-point FG.....	58
Consecutive games holding opponents under .500 shooting.....	18
Consecutive games holding opponents under 100 points.....	629
Consecutive games scoring at least 70 points	-

Other Miscellaneous Statistics Part II...

Date	Opponent	Result	Largest Lead				Paint		Off TOs		2nd Chance		Fastbreak		Rebounds		O. Rebounds		Bench Pts	
			Duke	Opp	Ties	LC	Duke	Opp	Duke	Opp	Duke	Opp	Duke	Opp	Duke	Opp	Duke	Opp	Duke	Opp
11/11	at Northwestern	L, 58-84	-	28	-	-	32	22	16	15	8	15	14	6	38	42	16	16	19	8
11/15	at Maine	W, 66-63	12	-	1	-	36	30	22	19	5	11	10	4	27	33	5	12	27	2
11/18	Elon	W, 81-64	17	5	4	3	48	24	10	16	12	8	4	2	41	30	18	12	16	8
11/23	vs. Washington	L, 64-71	-	15	-	-	26	30	15	17	14	9	-	2	31	35	14	13	2	27
11/24	vs. Ball State	W, 79-62	21	-	1	-	38	28	25	29	8	12	6	-	45	38	16	19	15	29
11/25	vs. Missouri	L, 54-62	4	9	4	9	24	4	13	11	10	11	6	-	35	31	10	10	3	6
11/28	at Wisconsin	W, 60-53	18	7	-	4	40	28	18	17	10	9	7	10	38	31	31	11	10	15
12/2	Marist	W, 64-56	11	6	5	12	28	16	15	18	10	12	7	7	42	31	15	13	14	14
12/6	UNLV	W, 66-38	31	-	2	0	22	20	29	11	6	8	19	2	42	25	11	5	22	6
12/9	South Carolina																			
12/20	at Oregon State																			
12/28	East Carolina																			
12/30	Florida Gulf Coast																			
1/3	at NC State																			
1/6	Louisville																			
1/10	at Georgia Tech																			
1/17	Miami																			
1/20	at Florida State																			
1/24	Wake Forest																			
1/27	Syracuse																			
1/31	at Boston College																			
2/3	Pittsburgh																			
2/7	at North Carolina																			
2/10	at Virginia																			
2/14	Virginia Tech																			
2/21	at Notre Dame																			
2/24	at Wake Forest																			
2/28	Clemson																			
3/3	North Carolina																			
TOTAL:			31	28			294	202	163	153	83	95	73	33	339	296	136	111	128	115
AVG:			12.7	3.1			32.7	22.4	18.1	17.0	9.2	10.6	8.1	3.7	37.7	32.9	15.1	12.3	14.2	12.8

Other Miscellaneous Statistics (Season/Career)...

Player	Individual Game Leaders										
	10+ Pts.	20+ Pts.	10+ Reb.	10+ Assists	3-Pt. Plays	Double-Doubles	Charges	First Sub	Points	Rebounds	Assists
J. Adams	-/-	-/-	-/-	-/-	-/-	-/-	-/-	7/7	-/-	-/-	1/1
O. Akinbode-James	1/1	-/-	2/2	-/-	1/1	1/1	-/-	1/1	1/1	3/3	-/-
M. Boykin	1/2	-/-	-/-	-/-	-/-	-/-	1/3	-/2	-/-	-/1	1/4
R. Craig	1/1	-/-	-/-	-/-	-/-	-/-	-/-	2/2	-/-	-/-	-/-
M. Goodchild	5/5	-/-	-/-	-/-	1/1	-/-	-/-	1/1	1/1	-/-	2/2
H. Gorecki	9/21	3/7	-/1	1/1	2/5	1/2	-/2	-/5	5/9	1/3	4/13
K. Lambert	-/17	-/-	-/-	-/1	-/9	-/1	-/9	-/6	-/2	-/4	-/24
U. Nwoke	-/-	-/-	-/-	-/-	-/-	-/-	-/-	-/-	-/-	-/-	-/-
L. Odom	9/34	2/5	4/11	-/-	2/6	4/8	-/4	-/21	3/7	5/26	1/4
S. Roma	-/-	-/-	-/-	-/-	1/2	-/-	-/-	-/-	-/-	-/-	-/-
E. Schubert	-/-	-/-	-/-	-/-	-/-	-/-	-/-	-/-	-/-	-/-	-/-
F. Suggs	2/2	-/-	-/-	-/-	-/5	-/-	1/6	-/1	-/-	-/3	1/1
M. Treece	-/-	-/-	-/-	-/-	-/1	-/-	-/-	-/-	-/-	-/-	-/-
J. Williams	2/3	-/-	-/-	-/-	1/2	-/-	-/-	4/14	-/-	1/2	-/1

The Last Time it Happened...

Team

100 Points by a Team

By Duke 105 vs. Longwood (11/15/16)
 By Opponent 104 by Connecticut (11/13/98)

30-Point Win

By Duke 101-30 vs. Winthrop (12/10/17)
 By Opponent 86-50 by Syracuse (1/3/16)

65 Percent Shooting by a Team

By Duke 650 vs. Texas State (11/28/15)
 By Opponent 655 by Virginia (1/25/94)

60 Percent Shooting by a Team

By Duke 615 at Long Beach State (11/25/16)
 By Opponent 618 by Notre Dame (2/2/14)

50 Percent Shooting by a Team

By Duke 523 vs. Elon (11/18/18)
 By Opponent 517 by Notre Dame (3/5/17)

Five Starters in Double-Digit Scoring

By Duke at Grand Canyon (11/12/17)
 By Opponent by Connecticut (12/29/14)

30 or More Turnovers

By Duke 32 at Syracuse (1/3/16)
 By Opponent 34 by Longwood (11/15/16)

Held to Less Than 10 Points in First Half

Duke --
 Opponent 3 by Monmouth (12/30/12)

Duke Played a Ranked Opponent

Duke Win 66-40 vs. [18/17] Georgia (3/19/18)
 Duke Loss 62-54 vs. [21/21] Missouri (11/25/18)

Overtime Game

Duke Win 74-67 at [12/11] North Carolina (1/25/15)
 Duke Loss 86-92 at North Carolina (1/21/18)

Home Openers

Duke Win 81-64 vs. Elon (11/18/18)
 Duke Loss 82-57 vs. UNC Greensboro (12/1/77)

Road/Neutral Openers

Duke Win 74-61 at Grand Canyon (11/12/17)
 Duke Loss 76-65 vs. [11] Notre Dame (11/17/04)

Duke Was Ranked

AP Number 1 March 12, 2007
 USA Today/ESPN Number 1 March 13, 2007
 AP Top 10 March 13, 2017 -- No. 9
 AP Top 25 October 31, 2018 - No. 21

Individual

40 Points by a Player

By Duke 43, Monique Currie at Miami (2/19/06)
 By Opponent 41, Jackie Stiles SW Missouri State (3/24/01)

30 Points by a Player

By Duke 30, Lexie Brown vs. Florida State (2/19/18)
 By Opponent 36, Paris Kea, North Carolina (1/21/18)

20 Rebounds by a Player

By Duke 20, Lexie Brown vs. Penn (11/13/16)
 By Opponent 22, Chelsea Nelson, NC State (3/2/18)

15 Rebounds by a Player

By Duke 15, Azurá Stevens vs. Notre Dame (3/4/16)
 By Opponent 15, Chelsea Nelson, NC State (1/7/18)

Two Players with 20 or More Points in Same Game

By Duke . Rebecca Greenwell [31] & Lexie Brown [22], North Carolina (2/25/18)
 By Opponent... Paris Kea [36] & Jamie Cherry [22], North Carolina (1/21/18)

Three Players with 20 or More Points in Same Game

By Duke.. I. Tillis [23], M. Bass [21] & A. Beard [20] vs. Stephen F. Austin (11/29/03)

Two Players with 10 or More Rebs. in Same Game

By Duke Leaonna Odom [11] & Haley Gorecki [10], Maine (12/19/17)
 By Opponent. A'Ja Wilson [11] & Alexis Jennings [10], South Carolina (12/3/17)

Three Players with 10 or More Rebs. in Same Game

By Duke R. Greenwell [14], K. Johnson [13] & E. Williams [10] at UNC (1/25/15)
 By Opponent... N. Bryant [12], H. Summers [11] & S. Watts [10], UNC (1/24/16)

10 Assists by a Player

By Duke 10, Haley Gorecki at Maine (11/15/18)
 By Opponent 13, Lindsay Allen, Notre Dame (3/5/17)

10 Steals by a Player

By Duke 10 by Alexis Jones vs. Notre Dame (2/2/14)
 By Opponent None

Five Steals by a Player

By Duke 5, Leaonna Odom vs. Marist (12/2/18)
 By Opponent 5, Emma Bockrath, High Point (11/16/17)

Five Blocked Shots by a Player

By Duke 6, Jade Williams vs. Georgia Tech (2/1/18)
 By Opponent 5, Natasha Howard, Florida State (1/23/14)

Double-Double by a Player

By Duke Leaonna Odom [20/11 rebounds] vs. Marist (12/2/18)
 By Opponent A'Ja Wilson [18/11 rebounds], South Carolina (12/3/17)

Triple-Double by a Player

By Duke .. Ka'lia Johnson (18 pts., 11 rbs., 13 ast.) at Old Dominion (11/16/14)
 By Opponent none

Duke Quarter Records - Team

Most Points Scored - 1st Quarter

1. 33 vs. Longwood, 11-15-16
2. 29 vs. Pepperdine, 11-27-16
3. 28 vs. Winthrop, 12-10-17
- 28 vs. Old Dominion, 11-22-16
5. 27 vs. Winthrop, 11-15-15
- 27 vs. Texas State, 11-28-15
7. 26 vs. Penn, 11-13-16
- 26 vs. Ohio State, 11-30-17
9. 25 vs. Minnesota, 12-13-15
- 25 vs. Western Carolina, 12-29-15

Most Points Scored - 2nd Quarter

1. 31 vs. Hampton, 3-18-17
2. 30 at North Carolina, 2-28-16
3. 29 vs. Liberty, 12-17-15
4. 27 at Pepperdine, 11-27-16
5. 26 vs. Iowa State, 11-27-15
- 26 vs. Georgia Tech, 2-1-18
7. 24 vs. North Carolina, 1-24-16
- 24 at Liberty, 11-11-16
- 24 vs. Winthrop, 12-10-17
- 24 vs. Elon, 11-118-18

Most Points Scored - 3rd Quarter

1. 34 vs. Wake Forest, 1-7-16
2. 32 vs. Virginia Tech, 1-19-17
3. 31 at Virginia Tech, 1-18-18
4. 29 vs. Old Dominion, 11-22-16
- 29 at Wake Forest, 2-16-17
6. 28 vs. Hampton, 3-18-17
7. 27 at Long Beach State, 11-25-16
8. 25 at Miami, 2-7-16
- 25 vs. Miami, 2-19-17
- 25 vs. Wyoming, 12-21-17

Most Points Scored - 4th Quarter

1. 32 at North Carolina, 2-26-17
2. 29 vs. Iowa State, 11-27-15
- 29 vs. Winthrop, 12-10-17
4. 28 vs. Connecticut, 3-24-18
5. 27 at Liberty, 11-11-16
- 27 vs. Longwood, 11-15-16
7. 26 vs. Miami, 2-19-17
8. 25 at Old Dominion, 11-22-17
9. 24 vs. Boston College, 1-17-16
- 24 vs. Grand Canyon, 11-17-16

Fewest Points Scored - 1st Quarter

1. 8 at Louisville, 1-10-16
2. 9 at Miami, 2-7-16
- 9 at Florida State, 1-8-17
4. 10 vs. Georgia Tech, 2-21-16
- 10 vs. Miami, 3-4-17
- 10 vs. Wake Forest, 2-7-18
7. 11 at Penn, 11-13-15
- 11 vs. Notre Dame, 3-4-16
- 11 at Boston College, 1-22-17
- 11 vs. Virginia, 1-14-18

Fewest Points Scored - 2nd Quarter

1. 2 at Louisville, 1-10-16
2. 2 at Miami, 2-7-16
3. 4 vs. NC State, 3-2-18
4. 6 at Florida State, 1-8-17
- 6 at NC State, 1-15-17
- 6 vs. Connecticut, 3-24-18
7. 8 vs. Louisville, 1-2-17
8. 9 vs. Texas A&M, 11-18-15
- 9 at Louisville, 1-10-16
- 9 vs. Penn, 11-13-16

Fewest Points Scored - 3rd Quarter

1. 8 at Villanova, 11-19-17
2. 9 at Louisville, 1-4-18
3. 10 at South Carolina, 12-03-17
4. 11 at Notre Dame, 1-26-17
- 11 vs. Notre Dame, 3-4-16
- 11 vs. Miami, 12-31-17
- 11 at Pittsburgh, 1-28-18
- 11 vs. Connecticut, 3-24-18
9. 12 vs. Kentucky, 12-29-16
- 12 at Florida State, 1-8-17

Fewest Points Scored - 4th Quarter

1. 5 at Syracuse, 1-3-16
2. 8 vs. Liberty, 12-29-17
- 8 vs. Notre Dame, 2-4-18
4. 9 vs. Syracuse, 2-10-17
5. 10 vs. Miami, 12-31-17
- 10 vs. NC State, 3-2-18
7. 11 vs. Virginia, 2-4-16
- 11 at Rutgers, 12-1-16
- 11 at Virginia, 2-5-17
- 11 vs. Pittsburgh, 2-12-17

Highest FG Percentage - 1st Quarter

1. 80 at Louisville, 1-4-18
2. 75 vs. Western Carolina, 12-29-15
3. 72.7 at Long Beach State, 11-25-16
4. 69.2 vs. Villanova, 12-21-16
5. 66.7 vs. Virginia, 2-4-16
- 66.7 vs. Winthrop, 12-10-17
7. 64.7 vs. Minnesota, 12-3-15
- 64.7 vs. Syracuse, 3-3-17
9. 63.2 vs. Texas State, 11-28-15
10. 62.5 at North Carolina, 2-28-16

Highest FG Percentage - 2nd Quarter

1. 77.8 vs. Ball State, 11-24-18
2. 72.7 vs. Liberty, 12-29-17
3. 66.7 vs. UNCW, 12-31-15
- 66.7 vs. Clemson, 2-2-17
- 66.7 vs. Hampton, 3-18-17
- 66.7 at North Carolina, 1-21-18
7. 64.7 vs. Georgia Tech, 2-1-18
8. 63.6 vs. Kentucky, 12-29-16
- 63.6 at Louisville, 1-4-18
- 63.6 vs. Georgia, 3-19-18

Highest FG Percentage - 3rd Quarter

1. 81.3 at Virginia Tech, 1-18-18
2. 80 at Virginia Tech, 2-18-16
3. 75 vs. Western Carolina, 12-29-15
- 75 at Long Beach State, 11-25-16
5. 71.4 at Miami, 2-7-16
- 71.4 vs. Virginia Tech, 1-19-17
7. 70.6 vs. Wake Forest, 1-7-16
8. 70 at Rutgers, 12-1-16
9. 69.2 at Maine, 11-15-18
10. 68.8 vs. North Carolina, 2-25-18

Highest FG Percentage - 4th Quarter

1. 86.7 at North Carolina, 2-26-17
2. 77.8 vs. Georgia Tech, 2-1-18
3. 75 vs. Texas State, 11-28-15
4. 73.3 vs. Winthrop, 12-10-17
5. 72.7 vs. Hampton, 3-18-17
- 72.7 vs. Presbyterian, 11-26-17
7. 70 at Wake Forest, 2-14-16
- 70 vs. Maine, 12-19-17
9. 69.2 vs. Ball State, 11-24-18
- 69.2 at Wisconsin, 11-28-18

Lowest FG Percentage - 1st Quarter

1. 21.4 vs. Wake Forest, 2-7-18
2. 23.5 at Miami, 2-7-16
3. 25 vs. Miami, 3-4-17
4. 26.3 vs. Notre Dame, 2-4-18
5. 26.7 vs. Notre Dame, 3-4-16
6. 27.8 at Clemson, 2-11-18
7. 28.6 vs. Virginia, 1-14-18
- 28.6 at Wisconsin, 11-28-18
9. 30 vs. Oregon, 3-20-17
- 30 vs. Belmont, 3-17-18

Lowest FG Percentage - 2nd Quarter

1. 0 at Miami, 2-7-16
2. 7.1 vs. NC State, 3-2-18
3. 15.4 at FSU, 1-8-17
- 15.4 at NC State, 1-15-17
5. 17.6 at Wake Forest, 2-14-16
6. 18.8 at Notre Dame, 1-26-17
7. 20 vs. Notre Dame, 3-5-17
8. 23.1 vs. Connecticut, 3-24-18
9. 25 vs. Texas A&M, 11-18-15
- 25 vs. Penn 11-13-16

Lowest FG Percentage - 3rd Quarter

1. 21.4 at Louisville, 1-4-18
- 21.4 at Wisconsin, 11-28-18
3. 25 at Clemson, 2-11-18
4. 27.3 vs. Virginia, 3-3-16
5. 27.8 vs. Notre Dame, 3-4-16
- 27.8 at South Carolina, 12-3-17
- 27.8 vs. Connecticut, 3-24-18
8. 29.4 at Louisville, 1-10-16
9. 30.8 vs. Ohio State, 11-30-17
10. 31.3 vs. Maine, 12-19-17

Lowest FG Percentage - 4th Quarter

1. 18.2 vs. Notre Dame, 2-4-18
2. 20 vs. Virginia, 3-3-16
- 20 at Wake Forest, 1-11-18
4. 21.4 at Miami, 2-7-16
5. 22 at Florida State, 1-8-17
6. 22.2 at Syracuse, 1-3-16
7. 23.1 vs. Elon, 12-8-16
8. 25 vs. NC State, 3-2-18
9. 26.1 vs. Florida State, 2-19-18
10. 26.7 vs. Pittsburgh, 2-12-17

Duke Quarter Records - Opponents

Most Points Scored - 1st Quarter

1. 30 Syracuse, 1-3-16
2. 27 Notre Dame, 3-15-17
3. 26 Louisville, 1-14-18
4. 25 Wake Forest, 1-7-16
5. 24 NC State, 1-15-17
6. 23 Army, 11-22-15
7. 22 Notre Dame, 2-1-16
- 22 Georgia Tech, 1-5-17
9. 21 Virginia Tech, 1-19-17
10. 20 Vanderbilt, 11-20-16

Most Points Scored - 2nd Quarter

1. 25 Notre Dame, 3-4-16
2. 24 North Carolina, 1-24-16
- 24 Georgia Tech, 2-21-18
4. 23 Syracuse, 2-15-18
5. 22 North Carolina, 1-21-18
6. 21 Washington, 11-23-18
7. 20 Virginia Tech, 2-18-16
- 20 South Carolina, 12-3-17
- 20 NC State, 1-17-18
- 20 Notre Dame, 2-4-18

Most Points Scored - 3rd Quarter

1. 26 Syracuse, 1-3-16
2. 26 Villanova, 11-19-17
- 25 Pennsylvania, 11-13-15
4. 23 Boston College, 1-17-16
- 23 Notre Dame, 3-4-16
- 23 Oregon State, 11-25-17
7. 22 Idaho, 11-26-15
- 22 Vanderbilt, 11-20-16
- 22 Oregon, 3-20-17
10. 21 Texas A & M, 11-18-15

Most Points Scored - 4th Quarter

1. 26 Wake Forest, 2-4-16
2. 24 Elon, 12-8-16
- 24 Florida State, 1-8-17
- 24 Wisconsin, 11-28-18
5. 23 Notre Dame, 2-1-16
- 23 North Carolina, 2-26-17
7. 22 Army, 11-22-15
- 22 Miami, 2-19-17
9. 21 Georgia Tech, 2-21-16
- 21 Notre Dame, 3-4-16

Fewest Points Scored - 1st Quarter

1. 4 Pennsylvania, 11-13-15
2. 5 Georgia Tech, 2-21-16
- 5 Rutgers, 12-1-16
- 5 Winthrop, 12-10-17
- 5 NC State, 1-7-18
6. 6 Old Dominion, 11-22-17
- 6 Maine, 11-15-18
8. 7 Texas State, 11-28-15
- 7 Villanova, 12-21-16
- 7 Pittsburgh, 1-28-18

Fewest Points Scored - 2nd Quarter

1. 2 Hampton, 3-18-17
- 2 Georgia, 3-19-18
3. 4 Texas State, 11-28-15
- 4 Longwood, 11-15-16
- 4 North Carolina, 1-12-17
- 6.. 5 Liberty, 12-17-15
- 5 Virginia, 1-14-18
8. 6 Liberty, 11-11-16
- 6 Clemson, 2-11-18
10. 7 UNC-Wilmington 12-31-15

Fewest Points Scored - 3rd Quarter

1. 5 Army, 11-22-15
- 5 Wake Forest, 2-14-16
- 5 NC State, 3-2-18
4. 6 UMass, 12-14-15
- 6 North Carolina, 1-24-16
- 6 Virginia, 2-5-16
7. 7 North Carolina, 2-25-18
8. 8 NC State, 1-15-17
- 8 UNC-Greensboro, 12-7-17
- 8 Winthrop, 12-10-17

Fewest Points Scored - 4th Quarter

1. 2 Liberty, 11-11-16
2. 6 Winthrop, 11-15-15
3. 7 Virginia, 2-4-16
- 7 Boston College, 1-22-17
- 7 Syracuse, 3-3-17
6. 8 Rutgers, 12-1-16
- 8 Presbyterian, 11-26-17
- 8 Ohio State, 11-30-17
9. 9 Pennsylvania, 11-13-15
- 9 Iowa State, 11-27-15

Highest FG Percentage - 1st Quarter

1. 70-Virginia, 1-14-18
2. 64.3-Wake Forest, 1-7-16
- 64.3-Notre Dame, 3-5-17
4. 63.6-Pittsburgh, 1-28-16
5. 63.2-Syracuse, 1-3-16
6. 60-NC State, 1-15-17
7. 58.3-Army, 11-22-15
- 58.3-Longwood, 11-15-16
- 58.3-Florida State, 2-19-18
10. 57.1-Wake Forest, 1-11-18

Highest FG Percentage - 2nd Quarter

1. 63.6-Louisville, 11-4-18
- 63.6-Notre Dame, 2-4-18
3. 61.5-Washington, 11-23-18
4. 60-South Carolina, 12-6-15
5. 58.3-Kentucky, 12-29-16
6. 53.8-Minnesota, 12-3-15
7. 53.3-North Carolina, 1-21-18
8. 52.6-Georgia Tech, 2-21-16
- 9 . 50-Wake Forest, 2-14-16
- 50-Notre Dame, 3-4-16

Highest FG Percentage - 3rd Quarter

1. 71.4-Boston College, 1-17-16
2. 64.3-Pennsylvania, 11-13-15
3. 63.6-Notre Dame, 2-4-18
4. 61.5-North Carolina, 1-12-17
- 61.5-Louisville, 1-2-17
6. 58.8-Oregon, 3-20-17
7. 57.1-Vanderbilt, 11-20-16
- 57.1-Old Dominion, 11-22-16
9. 56.3-Villanova, 11-19-17
10. 53.3-Grand Canyon, 11-12-17

Highest FG Percentage - 4th Quarter

1. 80.0-Wisconsin, 11-28-18
2. 72.7-Notre Dame, 3-5-17
3. 63.6-Syracuse, 2-15-18
4. 61.5-Notre Dame, 2-1-16
5. 60-Connecticut, 3-24-18
- 60-Maine, 11-15-18
7. 58.8-Notre Dame, 3-4-16
- 58.8-Florida State, 1-8-17
9. 58.3-South Carolina, 12-6-15
10. 57.1-Elon, 12-8-16

Lowest FG Percentage - 1st Quarter

1. 5.9-Georgia Tech, 2-21-16
2. 11.8-Pennsylvania, 11-13-15
3. 13.3-Winthrop, 12-10-17
4. 14.3-NC State, 1-7-18
5. 15.4-Rutgers, 12-1-16
- 15.4-Old Dominion, 11-22-17
7. 15.8-Villanova, 12-21-16
8. 16.7-Missouri, 11-25-18
9. 17.6-Villanova, 11-19-17
10. 20-Hampton, 3-18-17

Lowest FG Percentage - 2nd Quarter

1. 5.3-Georgia, 3-19-18
2. 6.3-Liberty, 11-11-16
3. 7.1-North Carolina, 1-12-17
- 7.1-Hampton, 3-18-17
5. 8.3-Texas State, 11-28-15
6. 10-Wake Forest, 1-29-17
7. 12.5-Liberty, 12-17-15
8. 14.3-Long Beach State, 11-25-16
9. 15-Liberty, 12-29-17
10. 15.4-Longwood- 11-15-16

Lowest FG Percentage - 3rd Quarter

1. 8.3-Army, 11-22-15
2. 11.1-Maine, 12-19-17
3. 11.8-North Carolina, 1-24-16
4. 12.5-NC State, 3-2-18
5. 13.3-Wake Forest, 2-14-16
6. 16.7-Boston College, 1-22-17
7. 17.6-Western Carolina, 12-29-15
- 17.6-Notre Dame, 2-1-16
- 17.6-Hampton, 3-18-17
10. 18.2-UMass, 12-14-15

Lowest FG Percentage - 4th Quarter

1. 0-Liberty, 11-11-16
2. 5.9-Winthrop, 11-15-15
3. 10.5-Syracuse, 2-10-17
4. 11.8-Syracuse 3-3-17
5. 15-Maine, 12-19-17
6. 15.4-High Point, 11-16-17
7. 16.7-Liberty, 12-17-15
- 16.7-Iowa State, 11-27-15
9. 17.6-Kentucky, 12-29-16
10. 21.4-Pennsylvania, 11-13-15

Duke Quarter Records - Individual

Most Points Scored - 1st Quarter

1. 14 Rebecca Greenwell vs. Wake Forest, 1-7-16
- 14 Lexie Brown vs. Longwood, 11-15-16
- 14 Lexie Brown vs. Boston College, 1-25-18
4. 13 Lexie Brown vs. Ohio State, 11-30-17
- 13 Lexie Brown at Georgia Tech, 1-5-17
6. 12 Lexie Brown at Notre Dame, 1-26-17
- 12 Rebecca Greenwell at Grand Canyon, 11-12-17
8. 11 Rebecca Greenwell vs. Winthrop, 11-15-15
- 11 Rebecca Greenwell vs. Texas A&M, 11-18-15
- 11 Azura Stevens vs. Army, 11-22-15

Most Points Scored - 2nd Quarter

1. 13 Haley Gorecki at Louisville, 1-4-18
- 13 Lexie Brown at Wake Forest, 1-11-18
3. 12 Azura Stevens vs. Idaho, 11-26-15
- 12 Rebecca Greenwell at North Carolina, 2-28-16
- 12 Lexie Brown vs. Old Dominion, 11-22-16
- 12 Lexie Brown vs. Winthrop, 12-10-17
7. 11 Rebecca Greenwell vs. Villanova, 12-21-16
- 11 Lexie Brown vs. Notre Dame, 3-5-17
- 11 Rebecca Greenwell vs. Presbyterian, 11-26-17
- 11 Jade Williams vs. Georgia Tech, 2-1-18

Most Points Scored - 3rd Quarter

1. 15 Rebecca Greenwell vs. North Carolina, 2-25-18
2. 14 Lexie Brown vs. Florida State, 2-19-18
3. 12 Lexie Brown vs. Long Beach State, 11-25-16
- 12 Rebecca Greenwell vs. Oregon State, 11-25-17
- 12 Lexie Brown vs. Wyoming, 12-21-17
- 12 Haley Gorecki at Virginia Tech, 1-18-18
7. 11 Azura Stevens vs. Wake Forest, 1-7-16
- 11 Oderah Chidom at Miami, 2-7-16
- 11 Rebecca Greenwell vs. Old Dominion, 11-22-16
- 11 Lexie Brown vs. Virginia Tech, 1-19-17

Most Points Scored - 4th Quarter

1. 14 Rebecca Greenwell vs. Boston College, 1-17-16
2. 13 Rebecca Greenwell vs. Longwood, 11-15-16
3. 12 Kyra Lambert vs. Notre Dame, 3-4-16
- 12 Lexie Brown at Old Dominion, 11-22-17
5. 11 Rebecca Greenwell vs. South Carolina, 12-4-16
- 11 Leanna Odom vs. Marist, 12-2-18
7. 10 Leanna Odom vs. Grand Canyon, 11-17-16
- 10 Rebecca Greenwell vs. Miami, 2-19-17
- 10 Lexie Brown vs. Oregon State, 11-25-17
- 10 Lexie Brown at Pittsburgh, 1-28-18

Most Rebounds - 1st Quarter

1. 7 Onome Akinbode-James at Wisconsin, 11-28-18
2. 6 Oderah Chidom at Pennsylvania, 11-13-15
- 6 Rebecca Greenwell vs. Notre Dame, 2-4-18
- 6 Bego Fax Dalvalos at Clemson, 2-11-18
5. 5 Amber Henson vs. North Carolina, 1-24-16
- 5 Oderah Chidom vs. Notre Dame, 2-1-16
- 5 Oderah Chidom vs. Notre Dame, 3-4-16
- 5 Rebecca Greenwell at Grand Canyon, 11-12-17
- 5 Rebecca Greenwell vs. Syracuse, 2-10-17
- 5 Leanna Odom vs. Pittsburgh, 2-12-17

Most Rebounds - 2nd Quarter

1. 7 Azura Stevens vs. Western Carolina, 12-29-15
- 6 Azura Stevens at Syracuse, 1-3-16
- 6 Azura Stevens vs. North Carolina, 1-24-16
- 6 Faith Suggs at Wake Forest, 2-14-16
- 6 Erin Mathias at Grand Canyon, 11-12-17
- 6 Erin Mathias at Georgia, 3-19-18
7. 5 Azura Stevens vs. Minnesota, 12-3-15
- 5 Rebecca Greenwell vs. Virginia, 2-4-16
- 5 Azura Stevens vs. Virginia, 3-3-16
- 5 Oderah Chidom vs. Notre Dame, 3-4-16

Most Rebounds - 3rd Quarter

1. 8 Amber Henson vs. North Carolina, 1-24-16
2. 7 Azura Stevens vs. Winthrop, 11-15-15
3. 6 Oderah Chidom vs. Virginia, 3-3-16
4. 5 Kendall Cooper vs. Idaho, 11-26-15
- 5 Amber Henson vs. Notre Dame, 2-1-16
- 5 Amber Henson at North Carolina, 2-28-16
- 5 Leanna Odom at Pepperdine, 11-27-16
- 5 Oderah Chidom vs. Notre Dame, 3-5-17
- 5 Rebecca Greenwell at Syracuse, 2-15-18
- 5 Rebecca Greenwell vs. North Carolina, 2-25-18

Most Rebounds - 4th Quarter

1. 7 Leanna Odom vs. Florida State, 2-19-18
2. 6 Azura Stevens vs. Texas A&M, 11-18-15
- 6 Azura Stevens vs. Army, 11-22-15
- 6 Azura Stevens vs. UMass, 12-14-15
5. 5 Oderah Chidom vs. Iowa State, 11-27-15
- 5 Oderah Chidom vs. Pennsylvania, 11-13-16
- 5 Erin Mathias vs. Grand Canyon, 11-17-16
- 5 Oderah Chidom at Long Beach State, 11-25-16
9. 4 Erin Mathias vs. Winthrop, 11-15-15
- 4 Leanna Odom vs. Marist, 12-2-18

Most Assists - 1st Quarter

1. 5 Lexie Brown at Pepperdine, 11-27-16
- 5 Lexie Brown vs. Syracuse, 2-10-17
3. 4 Angela Salvadores vs. Texas State, 11-28-15
- 4 Rebecca Greenwell vs. Minnesota, 12-3-15
- 4 Kyra Lambert vs. Old Dominion, 11-22-16
- 4 Kyra Lambert at Rutgers, 12-1-16
- 4 Lexie Brown vs. Hampton, 3-18-17
- 4 Lexie Brown vs. UNC-Greensboro, 12-7-17
9. 3 Kyra Lambert vs. Texas A&M, 11-18-15
- 3 Rebecca Greenwell vs. WCU, 12-29-15

Most Assists - 2nd Quarter

1. 5 Kyra Lambert at North Carolina, 2-28-16
- 5 Lexie Brown at Clemson, 2-11-18
3. 4 Angela Salvadores vs. Liberty, 12-17-15
- 4 Lexie Brown at Old Dominion, 11-22-17
- 4 Lexie Brown vs. Georgia Tech, 2-1-18
6. 3 Angela Salvadores vs. Iowa State, 11-27-15
- 3 Rebecca Greenwell at Liberty, 11-11-16
- 3 Kyra Lambert at Pepperdine, 11-27-16
- 3 Haley Gorecki vs. Liberty 12-29-17
- 3 Jayda Adams vs. Elon, 11-18-18

Most Assists - 3rd Quarter

1. 5 Lexie Brown vs. North Carolina, 2-25-18
- 5 Haley Gorecki at Maine, 11-15-18
2. 4 Lexie Brown at Pepperdine, 11-27-16
- 4 Lexie Brown at Wake Forest, 2-16-17
- 4 Lexie Brown at Grand Canyon, 11-12-17
- 4 Lexie Brown at Louisville, 1-4-18
- 4 Jade Williams at Louisville, 1-4-18
7. 3 Angela Salvadores vs. Idaho, 11-26-15
- 3 Angela Salvadores vs. Minnesota, 12-3-15
- 3 Kyra Lambert at Long Beach State, 11-25-16

Most Assists - 4th Quarter

1. 8 Kyra Lambert at North Carolina, 2-26-17
2. 4 Kyra Lambert vs. Boston College, 1-17-16
3. 3 Leanna Odom at Louisville, 1-4-18
- 3 Lexie Brown vs. North Carolina, 2-25-18
- 3 Lexie Brown vs. Connecticut, 3-24-18
- 3 Haley Gorecki vs. Marist, 12-2-18
6. 2 Angela Salvadores vs. Army, 11-22-15
- 2 Lynee Belton vs. Iowa State, 11-27-15
- 2 Kendall Cooper vs. Texas State, 11-28-15
- 2 Angela Salvadores vs. Texas State, 11-28-15

Most Blocks - 1st Quarter

1. 3 Oderah Chidom vs. Boston College, 1-17-16
- 3 Oderah Chidom at Vanderbilt, 11-27-16
- 3 Kendall Cooper vs. Pittsburgh, 2-12-17
4. 2 Amber Henson vs. Winthrop, 11-15-15
- 2 Azura Stevens at South Carolina, 12-6-15
- 2 Amber Henson vs. North Carolina, 1-24-16
- 2 Oderah Chidom vs. Virginia, 2-4-16
- 2 Amber Henson vs. Georgia Tech, 2-21-16
- 2 Azura Stevens vs. Virginia, 3-3-16
- 2 Oderah Chidom vs. Notre Dame, 3-4-16

Most Blocks - 2nd Quarter

1. 4 Jade Williams vs. Georgia Tech, 2-1-18
2. 3 Lexie Brown vs. Longwood, 11-15-16
- 3 Oderah Chidom vs. North Carolina, 1-12-17
- 3 Erin Mathias vs. Virginia Tech, 1-18-18
5. 2 Kendall Cooper vs. Idaho, 11-26-15
- 2 Azura Stevens vs. UMass, 12-14-15
- 2 Oderah Chidom vs. Notre Dame, 3-4-16
- 2 Erin Mathias at Wake Forest, 2-16-17
- 2 Oderah Chidom at Liberty, 11-11-16
- 2 Leanna Odom vs. Wyoming, 12-21-17

Most Blocks - 3rd Quarter

1. 3 Amber Henson vs. Virginia, 2-4-16
- 3 Oderah Chidom at Liberty, 11-11-16
- 3 Oderah Chidom at Long Beach State, 11-25-16
- 3 Kendall Cooper at Pepperdine, 11-27-16
5. 2 Azura Stevens vs. Winthrop, 11-15-15
- 2 Azura Stevens vs. Iowa State, 11-27-15
- 2 Oderah Chidom vs. Western Carolina, 12-29-15
- 2 Rebecca Greenwell vs. Wake Forest, 1-7-16
- 2 Amber Henson vs. Wake Forest, 1-7-16
- 2 Azura Stevens vs. Boston College, 1-17-16

Most Blocks-4th Quarter

1. 3 Onome Akinbode-James vs. Elon, 11-18-18
2. 2 Azura Stevens vs. Winthrop, 11-15-15
- 2 Amber Henson vs. Winthrop, 11-15-15
- 2 Azura Stevens at Clemson, 1-21-16
- 2 Oderah Chidom vs. Georgia Tech, 2-21-16
- 2 Oderah Chidom at North Carolina, 2-28-16
- 2 Oderah Chidom at Pepperdine, 11-27-16
- 2 Oderah Chidom at Georgia Tech, 1-5-17
- 2 Kendall Cooper at Florida State, 1-8-17
- 2 Kendall Cooper vs. Oregon, 3-20-17

Most Steals - 1st Quarter

1. 3 Kyra Lambert at Liberty, 11-11-16
- 3 Leanna Odom vs. Longwood, 11-15-16
- 3 Lexie Brown vs. High Point, 11-16-17
- 3 Lexie Brown vs. Georgia, 3-19-18
- 3 Lexie Brown vs. Connecticut, 3-24-18
6. 2 Angela Salvadores vs. WCU, 12-29-15
- 2 Amber Henson vs. Boston College, 1-17-16
- 2 Rebecca Greenwell at Pittsburgh, 1-28-16
- 2 Haley Gorecki vs. Elon, 11-18-18

Most Steals - 2nd Quarter

1. 4 Lexie Brown at Georgia Tech, 1-5-17
2. 3 Lexie Brown vs. UNC-Greensboro, 12-7-17
- 3 Lexie Brown vs. Winthrop, 12-10-17
- 3 Lexie Brown vs. Boston College, 1-25-18
- 3 Rebecca Greenwell vs. Boston College, 1-17-16
- 3 Erin Mathias vs. Georgia Tech, 2-1-18
7. 2 Haley Gorecki at Maine, 11-15-18
- 2 Haley Gorecki at Pennsylvania, 11-13-15
- 2 Azura Stevens at South Carolina, 12-6-15
- 2 Haley Gorecki vs. Elon, 11-18-18

Duke Quarter Records - Individual

Most Steals - 3rd Quarter

1. 4 Haley Gorecki at Maine, 11-15-18
2. 3 Oderah Chidom vs. North Carolina, 1-24-16
- 3 Oderah Chidom vs. Elon, 12-8-16
- 3 Rebecca Greenwell at Virginia, 2-15-17
- 3 Lexie Brown vs. Syracuse, 3-3-17
- 3 Lexie Brown vs. UNC-Greensboro, 12-7-17
- 3 Lexie Brown at Miami, 12-31-17
- 3 Rebecca Greenwell at Clemson, 2-11-18
9. 2 Azura Stevens vs. Liberty, 12-17-15
- 2 Rebecca Greenwell vs. Liberty, 12-17-15

Most Steals - 4th Quarter

1. 2 Azura Stevens vs. Winthrop, 11-15-15
- 2 Kyra Lambert vs. UMass, 12-14-15
- 2 Lynee Belton vs. Liberty, 12-17-15
- 2 Angela Salvadores at Syracuse, 1-3-16
- 2 Kyra Lambert vs. Boston College, 1-17-16
- 2 Rebecca Greenwell vs. North Carolina, 1-24-16
- 2 Angela Salvadores at Syracuse, 1-3-16
- 2 Kyra Lambert vs. Boston College, 1-17-16
- 2 Kyra Lambert at Clemson, 1-21-16
- 2 Lexie Brown vs. Winthrop, 12-10-17

The Blue Devils' Record When

At home	3-0
On the road	2-1
At a neutral site	1-2
Against a top 25 opponent	0-1
Against a top 10 opponent	
Against a top 5 opponent	
In tournaments	
On television	3-0
In white uniforms	3-2
In blue uniforms	3-1
In black uniforms	
In blue/pink uniforms	
In white/pink uniforms	
On Sunday	2-2
On Monday	
On Tuesday	
On Wednesday	1-0
On Thursday	2-0
On Friday	0-1
On Saturday	1-0
Day Games	3-3
Night Games	3-0
Overtime Games	
When the starters are:	
Odom, Akinbode-James, Williams, Gorecki, Suggs	0-1
Odom, Akinbode-James, Craig, Gorecki, Suggs	1-0
Odom, Williams, Gorecki, Goodchild, Suggs	1-1
Odom, Akinbode-James, Gorecki, Goodchild, Suggs	4-1
Leading at the half	4-0
Trailing at the half	1-2
Tied at the half	1-1
Outrebounding opponent	6-1
Opponent outrebounds Duke	1-2
Equal rebounds	
FG% equal/over .500	3-0
FG% equal/over .400	3-1
FG% below .400	0-2
Opponent FG% equal/over .400	1-2
Opponent FG% below .400	5-1
Duke has more turnovers	2-2
Opponent has more turnovers	3-1
Teams have equal turnovers	1-0
Scoring below 50 points	
Scoring 50-59 points	0-2
Scoring 60-69 points	4-1
Scoring 70-79 points	1-0
Scoring 80-89 points	1-0
Scoring 90-99 points	
Scoring 100+ points	
When leading after 3rd period	5-0
When leading w/ 5 minutes left	5-0
When trailing after 3rd period	1-3
When trailing w/ 5 minutes left	1-3
When tied w/ 5 minutes left	

12/1/201 Duke 58, Northwestern 84

November 23, 2018
at Welsh-Ryan Arena (Evanston, Ill.)

Duke	FG	3FG	FT	REB	PF	TP	A	TO	B	S	Min
Odom	f 6-12	0-0	2-4	5-9-14	4	14	0	8	0	1	36
Akinboode-James	f 1-4	0-0	3-4	2-0-2	4	5	2	2	0	1	16
Williams	f 2-7	0-0	2-2	3-1-4	4	6	0	0	0	0	33
Gorecki	g 4-19	2-11	0-0	0-4-4	2	10	3	6	0	3	38
Suggs	g 1-5	0-1	2-3	0-3-3	1	4	2	1	0	1	14
Goodchild	g 1-4	0-2	2-2	1-1-2	3	4	1	4	0	3	26
Roma	g 1-1	0-0	0-0	1-0-1	0	2	0	1	0	0	6
Craig	g 5-8	1-2	2-2	1-1-2	6	13	0	2	0	1	20
Adams	g 0-0	0-0	0-0	0-0-0	0	0	0	0	0	0	7
Treece	g 0-0	0-0	0-0	0-0-0	2	0	1	0	0	0	4
TEAM	3-3-6										
Totals	21-60	3-16	13-17	16-22-38	26	58	9	24	1	11	200
Pct.	35.0	18.8	76.5	DB: 1							

FG's (1Q: 5-12, 41.7%; 2Q: 5-14, 35.7%; 3Q: 5-14, 35.7%; 4Q: 6-20, 30.0%)
3FG's (1Q: 1-3, 33.3%; 2Q: 0-2, 0.0%; 3Q: 2-3, 66.7%; 4Q: 0-8, 0.0%)
FT's (1Q: 0-1, 0.0%; 2Q: 4-6, 66.7%; 3Q: 9-10, 90.0%; 4Q: 0-0, 0.0%)

Northwestern

Northwestern	FG	3FG	FT	REB	PF	TP	A	TO	B	S	Min
Kunaiyi-Apan	f 3-6	0-0	5-8	7-10-17	4	11	4	1	0	1	22
Scheid	c 7-14	2-5	2-3	2-0-2	0	18	4	1	0	1	34
Pulliam	g 6-21	1-5	8-8	1-4-5	3	21	4	2	0	1	36
Burton	g 2-4	2-4	2-2	0-1-1	3	8	3	2	0	3	24
Hamilton	g 5-10	3-5	5-6	1-4-5	2	18	4	7	0	4	34
Sancataldo	g 0-0	0-0	2-2	0-0-0	1	2	0	1	1	0	3
Wood	g 0-1	0-1	0-0	1-0-1	0	0	0	0	0	0	5
Hopkins	g 0-1	0-0	0-0	0-0-0	1	0	0	1	0	0	2
Wolf	g 2-3	0-0	0-0	2-1-3	3	4	0	0	0	0	18
Galemik	g 0-0	0-0	0-0	0-0-0	0	0	0	0	0	0	2
Jamison	g 1-4	0-0	0-0	0-1-1	2	2	2	0	0	1	20
TEAM	2-5-7										
Totals	26-64	8-20	24-29	16-26-42	19	84	19	14	2	11	200
Pct.	40.6	40.0	82.8	DB: 5							

FG's (1Q: 6-15, 40.0%; 2Q: 7-19, 36.8%; 3Q: 9-16, 56.3%; 4Q: 4-14, 28.6%)
3FG's (1Q: 3-7, 42.9%; 2Q: 0-4, 0.0%; 3Q: 5-7, 71.4%; 4Q: 0-2, 0.0%)
FT's (1Q: 3-3, 100.0%; 2Q: 1-2, 50.0%; 3Q: 5-5, 100.0%; 4Q: 15-19, 78.9%)

Officials: Tina Napier, Kevin Pethitel, Michael McConnell
Attendance: 2,258 • Technical Fouls: Duke-Rayah Craig; TEAM: Northwestern-Jess Sancataldo; TEAM.

Score by Periods

	1st	2nd	3rd	4th	Total
Duke	11	14	21	12	58
Northwestern	18	15	28	23	84

Duke 64, Washington 71

November 23, 2018
at Gulf Coast Classic (Ft. Meyers, Fla.)

Duke	FG	3FG	FT	REB	PF	TP	A	TO	B	S	Min
Odom	f 7-17	0-1	5-6	5-5-10	2	19	4	7	1	2	38
Williams	f 3-7	0-0	0-0	5-0-5	4	6	0	0	0	3	26
Gorecki	g 6-17	2-8	6-11	2-4-6	5	20	5	2	0	2	39
Goodchild	g 4-9	3-5	1-1	0-2-2	2	12	3	4	0	0	32
Suggs	g 2-4	1-1	0-0	1-4-5	3	5	0	1	1	1	24
Craig	g 0-2	0-1	0-0	0-0-0	1	0	1	3	0	0	9
Akinboode-James	g 0-0	0-0	0-0	1-2-3	1	0	0	3	0	2	15
Adams	g 1-1	0-0	0-0	0-0-0	1	2	0	1	0	1	17
TEAM	0-0-0										
Totals	23-57	6-16	12-18	14-17-31	19	64	13	21	2	10	200
Pct.	40.4	37.5	66.7	DB: 3,1							

FG's (1Q: 5-13, 38.5%; 2Q: 5-14, 35.7%; 3Q: 7-13, 53.8%; 4Q: 6-17, 40.4%)
3FG's (1Q: 1-5, 20.0%; 2Q: 0-2, 0.0%; 3Q: 2-4, 50.0%; 4Q: 3-5, 37.5%)
FT's (1Q: 1-1, 100.0%; 2Q: 2-4, 50.0%; 3Q: 2-4, 50.0%; 4Q: 7-9, 77.8%)

Washington

Washington	FG	3FG	FT	REB	PF	TP	A	TO	B	S	Min
Johnson	f 0-3	0-2	0-0	1-0-1	1	0	2	3	0	0	15
Henson	f 2-5	1-4	1-2	0-3-3	4	6	6	1	0	4	31
Melgoza	g 6-13	1-4	5-5	2-2-4	3	18	4	3	0	0	31
Moser	g 1-2	1-2	0-0	0-1-1	1	3	1	2	0	1	16
Peterson	g 6-9	3-6	2-2	3-6-9	2	17	2	3	0	3	32
Van Dyke	g 1-2	1-1	0-0	1-1-2	1	3	1	0	0	0	13
Rooks	g 1-2	0-1	2-2	0-1-1	1	4	0	2	0	0	9
Watkins	g 3-5	1-2	1-2	0-0-0	1	8	1	1	0	1	16
Griggsby	g 1-4	0-3	0-0	1-1-2	0	2	0	0	0	1	10
Rees	g 4-8	0-1	2-5	2-3-5	4	10	0	3	1	2	27
TEAM	3-4-7										
Totals	25-53	8-26	13-18	13-22-35	18	71	17	19	1	12	200
Pct.	47.2	30.8	72.2	DB: 2,1							

FG's (1Q: 6-15, 40.0%; 2Q: 8-13, 61.5%; 3Q: 5-13, 38.5%; 4Q: 6-12, 50.0%)
3FG's (1Q: 3-8, 37.5%; 2Q: 5-9, 55.6%; 3Q: 0-4, 0.0%; 4Q: 8-26, 30.8%)
FT's (1Q: 1-3, 33.3%; 2Q: 0-0, 0.0%; 3Q: 5-7, 71.4%; 4Q: 7-8, 87.5%)

Officials: Brian Garland, Jennifer Rezac, Talisa Green
Attendance: 458 • Technical Fouls: None

Score by Periods

	1st	2nd	3rd	4th	Total
Washington	16	21	15	19	71
Duke	12	12	18	22	64

1-2/201 Duke 66, Maine 63

November 15, 2018
at Cross Insurance Center (Bangor, ME)

Duke	FG	3FG	FT	REB	PF	TP	A	TO	B	S	Min
Odom	f 8-13	0-0	0-0	0-5-5	3	16	3	2	3	1	29
Suggs	f 0-1	0-0	0-0	0-2-2	1	0	0	1	1	0	17
Akinboode-James	c 1-2	0-0	0-0	0-3-3	2	2	1	1	0	0	19
Gorecki	g 7-12	4-9	3-6	1-5-6	0	21	10	5	0	7	39
Craig	g 1-1	0-1	0-0	0-2-2	0	0	1	2	0	1	13
Goodchild	g 5-10	4-8	0-0	0-2-2	1	14	0	2	0	1	30
Roma	g 0-0	0-0	0-0	0-0-0	2	0	0	0	0	0	7
Williams	g 5-7	0-0	1-6	3-3-6	1	11	1	1	0	1	34
Adams	g 0-2	0-1	2-2	0-0-0	1	2	1	1	0	1	12
TEAM	3-3-6										
Totals	26-48	8-19	6-14	5-22-27	11	66	17	15	4	12	200
Pct.	54.2	42.1	42.9	DB: 4							

FG's (1Q: 7-13, 53.8%; 2Q: 4-12, 33.3%; 3Q: 9-13, 69.2%; 4Q: 6-10, 60.0%)
3FG's (1Q: 2-5, 40.0%; 2Q: 1-4, 25.0%; 3Q: 2-4, 50.0%; 4Q: 3-6, 50.0%)
FT's (1Q: 0-1, 0.0%; 2Q: 2-3, 66.7%; 3Q: 2-4, 50.0%; 4Q: 2-6, 33.3%)

Maine

Maine	FG	3FG	FT	REB	PF	TP	A	TO	B	S	Min
Wadling	f 3-7	0-1	0-0	4-5-9	4	6	3	1	0	1	27
Rosignol	g 2-7	1-6	0-0	1-5-6	1	5	4	1	0	0	40
Saar	g 4-10	3-9	0-0	0-1-1	0	11	5	5	0	1	38
Milan	g 11-22	3-10	0-0	2-3-5	3	25	2	4	0	3	40
Sutton	g 6-13	0-1	2-2	2-3-5	3	14	2	3	0	2	37
McVicar	g 0-0	0-0	0-0	0-0-0	2	0	0	0	0	0	2
Carroll	g 1-2	0-0	0-0	2-1-3	0	2	0	2	1	0	16
TEAM	2-5-7										
Totals	27-61	7-27	2-2	12-21-33	13	63	16	16	1	7	200
Pct.	44.3	25.9	100.0	DB: 0							

FG's (1Q: 3-17, 17.6%; 2Q: 7-14, 50.0%; 3Q: 8-15, 53.3%; 4Q: 9-15, 60.0%)
3FG's (1Q: 0-8, 0.0%; 2Q: 2-7, 28.6%; 3Q: 3-6, 50.0%; 4Q: 2-6, 33.3%)
FT's (1Q: 0-0, 0.0%; 2Q: 0-0, 0.0%; 3Q: 0-0, 0.0%; 4Q: 2-2, 100.0%)

Officials: Timothy Greene, Fatou Cissoko-Stephens, Brandon Enterline
Attendance: 2,868 • Technical Fouls: None

Score by Periods

	1st	2nd	3rd	4th	Total
Duke	16	11	22	17	66
Maine	6	16	19	22	63

Duke 79, Ball State 62

November 24, 2018
at Gulf Coast Classic (Ft. Meyers, Fla.)

Duke	FG	3FG	FT	REB	PF	TP	A	TO	B	S	Min
Odom	f 6-14	0-0	1-4	3-6-9	2	13	6	7	0	1	31
Akinboode-James	f 3-5	0-0	1-3	3-3-6	4	7	1	6	1	2	21
Gorecki	g 8-16	3-7	0-1	0-5-5	3	19	2	0	0	3	33
Goodchild	g 5-9	3-7	0-0	0-3-3	2	13	2	8	1	3	32
Suggs	g 4-5	0-0	4-4	2-4-6	3	12	1	3	0	1	26
Roma	g 0-0	0-0	0-0	1-2-3	1	0	0	1	1	0	11
Nwoke	g 0-0	0-0	0-0	0-0-0	0	0	0	0	0	0	1
Craig	g 1-2	1-1	0-0	0-1-1	1	3	1	1	0	0	9
Williams	g 4-6	0-0	1-1	2-1-3	5	9	2	3	2	1	22
Adams	g 1-4	1-3	0-2	2-1-3	1	3	2	0	0	1	14
TEAM	3-3-6										
Totals	32-61	8-18	7-15	16-29-45	22	79	17	29	6	12	200
Pct.	52.5	44.4	46.7	DB: 2							

FG's (1Q: 8-20, 40.0%; 2Q: 7-9, 77.8%; 3Q: 8-19, 42.1%; 4Q: 9-13, 69.2%)
3FG's (1Q: 3-5, 60.0%; 2Q: 4-4, 100.0%; 3Q: 1-6, 16.7%; 4Q: 0-3, 0.0%)
FT's (1Q: 2-3, 66.7%; 2Q: 5-9, 55.6%; 3Q: 0-2, 0.0%; 4Q: 0-1, 0.0%)

Ball State

Ball State	FG	3FG	FT	REB	PF	TP	A	TO	B	S	Min
------------	----	-----	----	-----	----	----	---	----	---	---	-----

Duke 60, Wisconsin 53

November 28, 2018
at Kohl Center (Madison, Wisconsin)

Duke	FG	3FG	FT	REB	PF	TP	A	TO	B	S	Min
Odom f	6-7	0-0	0-1	2-3-5	4	12	1	7	0	2	29
Akinbode-Jamesf	6-12	0-0	2-2	4-10-14	4	14	0	1	0	2	29
Gorecki g	5-17	1-6	3-3	0-4-4	2	14	2	2	0	0	38
Goodchild g	3-9	1-4	0-0	1-0-1	2	7	4	2	0	2	35
Suggs g	1-2	0-0	1-2	0-3-3	3	3	0	4	0	1	13
Roma	1-3	0-0	1-1	1-1-2	1	3	0	1	0	0	9
Craig	0-1	0-0	0-0	1-0-1	1	0	0	1	0	0	3
Williams	1-3	0-0	0-0	3-2-5	5	2	1	1	0	1	24
Adams	2-4	1-3	0-0	0-0-0	0	5	1	0	2	1	19
Treece	0-0	0-0	0-0	0-0-0	0	0	0	0	0	0	1
TEAM				1-2-3							1
Totals	25-58	3-13	7-9	13-25-38	22	60	9	19	2	9	200
Pct.	43.1	23.1	77.8	DB: 2,1							

FG's (1Q: 4-14, 28.6%; 2Q: 9-17%; 3Q: 3-14, 21.4%; 4Q: 9-13, 69.2%)
 3FG's (1Q: 0-4, 0.0%; 2Q: 2-5, 40.0%; 3Q: 0-2, 0.0%; 4Q: 1-2, 50.0%)
 FT's (1Q: 1-3, 33.3%; 2Q: 1-1, 100.0%; 3Q: 2-2, 100.0%; 4Q: 3-3, 100.0%)

Wisconsin

Wisconsin	FG	3FG	FT	REB	PF	TP	A	TO	B	S	Min
Karlis f	1-4	0-3	1-3	1-2-3	4	3	0	3	1	3	29
Howard f	6-11	0-1	5-5	4-6-10	3	17	0	5	2	2	38
Lewis f	4-11	0-0	3-4	3-1-4	2	11	0	1	0	0	31
van Leeuwen g	1-4	0-0	2-4	0-2-2	1	4	2	3	0	1	26
Luehring g	1-6	1-6	0-0	0-1-1	0	3	4	0	0	0	24
Gilreath	2-3	2-3	0-0	0-0-0	0	6	1	0	0	0	7
Laszewski	0-1	0-0	0-0	0-2-2	1	0	0	1	0	0	12
Bragg	0-0	0-0	0-0	0-0-0	0	0	0	0	0	0	1
Beverly	2-6	0-1	0-0	0-0-0	0	4	2	2	0	0	23
Hale	1-4	0-2	3-7	1-3-4	4	5	1	2	0	3	16
TEAM				2-3-5							
Totals	18-50	3-16	14-23	11-20-31	15	53	10	20	3	9	200
Pct.	36.0	18.8	60.9	DB: 4							

FG's (1Q: 5-18, 27.8%; 2Q: 2-8, 25.0%; 3Q: 3-14, 21.4%; 4Q: 8-10, 80.0%)
 3FG's (1Q: 0-4, 0.0%; 2Q: 0-3, 0.0%; 3Q: 1-6, 16.7%; 4Q: 2-3, 66.7%)
 FT's (1Q: 0-1, 0.0%; 2Q: 5-8, 62.5%; 3Q: 3-5, 60.0%; 4Q: 6-9, 66.7%)

Officials: Gina Cross, Beverly Roberts, Tina Napier
 Attendance: 3,483 • Technical Fouls: Duke-none. Wisconsin-none.

Score by Periods

	1st	2nd	3rd	4th	Total
Duke	9	21	8	22	60
Wisconsin	10	9	10	24	53

Duke 64, Marist 56

December 2, 2018
at Cameron Indoor Stadium (Durham, N.C.)

Duke	FG	3FG	FT	REB	PF	TP	A	TO	B	S	Min
Odom f	8-14	0-0	4-5	3-8-11	2	20	1	6	1	5	37
Akinbode-Jamesf	1-2	0-0	1-1	2-2-4	4	3	1	0	0	0	12
Gorecki g	4-17	2-8	7-8	0-8-8	1	17	5	3	0	5	37
Goodchild g	3-7	2-3	1-2	0-0-0	0	9	3	2	0	0	38
Suggs g	0-1	0-0	1-2	1-1-2	1	1	2	1	0	2	23
Roma	0-0	0-0	0-0	0-0-0	0	0	0	0	0	0	1
Craig	0-0	0-0	0-0	1-1-2	0	0	1	0	0	1	7
Williams	5-9	0-0	1-4	2-6-8	0	11	0	5	1	0	34
Adams	1-1	1-1	0-0	0-0-0	2	3	1	0	0	0	11
TEAM				6-1-7							2
Totals	22-51	5-12	15-22	15-27-42	10	64	14	19	2	13	200
Pct.	43.1	41.7	68.2	DB: 3							

FG's (1Q: 5-16, 31.3%; 2Q: 5-10, 50.0%; 3Q: 5-11, 45.5%; 4Q: 7-14, 50.0%)
 3FG's (1Q: 1-3, 33.3%; 2Q: 2-3, 66.7%; 3Q: 2-4, 50.0%; 4Q: 0-2, 0.0%)
 FT's (1Q: 0-0, 0.0%; 2Q: 5-9, 55.6%; 3Q: 2-2, 100.0%; 4Q: 8-11, 72.7%)

Marist

Marist	FG	3FG	FT	REB	PF	TP	A	TO	B	S	Min
Gilmer f	9-21	2-3	5-6	3-3-6	2	25	1	3	0	0	36
VanderWeide g	0-1	0-1	0-0	2-4-6	4	0	7	5	0	0	28
Clement g	0-0	0-0	0-0	0-0-0	0	0	0	0	0	0	5
Fitzpatrick g	1-7	0-4	0-0	2-1-3	2	2	2	2	0	3	31
Hand g	6-16	3-10	0-0	0-3-3	2	15	1	2	1	1	28
Best g	3-7	3-6	0-0	1-2-3	0	9	3	3	1	0	21
Henningsdottir	0-2	0-1	0-2	2-0-2	1	0	0	0	2	0	19
Duffell	1-2	0-0	0-0	0-2-2	4	2	3	2	1	1	19
Barcello	1-4	1-4	0-0	0-0-0	0	3	0	0	0	0	13
TEAM				3-3-6							
Totals	21-60	9-29	5-8	13-18-31	15	56	17	17	5	5	200
Pct.	35.0	31.0	62.5	DB: 2							

FG's (1Q: 5-15, 33.3%; 2Q: 6-16, 37.5%; 3Q: 5-15, 33.3%; 4Q: 5-14, 35.7%)
 3FG's (1Q: 1-3, 33.3%; 2Q: 4-8, 50.0%; 3Q: 2-8, 25.0%; 4Q: 2-10, 20.0%)
 FT's (1Q: 2-2, 100.0%; 2Q: 0-0, 0.0%; 3Q: 0-0, 0.0%; 4Q: 3-6, 50.0%)

Officials: Bryan Burnette, Mark Berger, Roy Jackson
 Attendance: 2,923 • Technical Fouls: Duke-none. Marist-none.

Score by Periods

	1st	2nd	3rd	4th	Total
Duke	11	17	14	22	64
Marist	13	16	12	15	56

Duke 66, UNLV 38

December 6, 2018
at Cameron Indoor Stadium (Durham, N.C.)

Duke	FG	3FG	FT	REB	PF	TP	A	TO	B	S	Min
Odom f	5-7	0-0	1-3	1-5-6	1	11	2	3	1	1	29
Akinbode-Jamesf	1-6	0-0	1-2	3-4-7	1	3	1	2	1	1	27
Gorecki g	3-8	1-2	5-6	0-5-5	2	12	0	7	0	1	26
Goodchild g	5-9	4-5	0-0	1-3-4	1	14	1	3	0	0	28
Suggs g	2-4	0-0	0-2	0-4-4	1	4	0	1	0	0	18
Roma	0-0	0-0	0-0	0-0-0	1	0	0	0	0	0	1
Craig	0-1	0-0	1-2	1-1-2	0	1	0	1	0	0	7
Williams	2-5	0-0	0-0	2-4-6	3	4	11	1	2	0	18
Schubert	0-0	0-0	0-0	0-0-0	0	0	0	0	0	0	3
Adams	2-5	1-1	1-2	0-2-2	1	6	2	1	0	2	16
Treece	0-0	0-0	0-0	0-0-0	1	0	0	1	0	0	6
TEAM				6-1-7							2
Totals	24-53	7-11	11-19	11-31-42	12	66	13	23	4	9	200
Pct.	45.3	63.6	57.9	DB: 6, 1							

FG's (1Q: 4-8, 50.0%; 2Q: 6-14, 42.9%; 3Q: 7-17, 41.2%; 4Q: 7-14, 50.0%)
 3FG's (1Q: 2-2, 100.0%; 2Q: 0-0, 0.0%; 3Q: 1-4, 25.0%; 4Q: 4-5, 80.0%)
 FT's (1Q: 2-2, 100.0%; 2Q: 1-4, 25.0%; 3Q: 4-7, 57.1%; 4Q: 4-6, 66.7%)

UNLV

UNLV	FG	3FG	FT	REB	PF	TP	A	TO	B	S	Min
Anderson f	1-5	1-4	0-0	1-2-3	3	3	0	1	0	0	21
Bell f	3-8	1-2	0-0	1-3-4	4	7	1	3	0	1	30
Wade c	3-6	0-0	2-2	0-1-1	1	8	0	2	0	1	21
Wheatley g	4-11	1-1	1-2	0-4-4	1	10	0	2	1	4	22
Thomas g	2-8	0-6	0-2	0-3-3	2	4	2	2	0	3	40
Smith	1-3	0-0	0-0	0-0-0	4	2	1	5	0	0	10
Brown	0-1	0-0	2-2	0-2-2	0	2	0	3	0	0	19
Elzy	0-1	0-0	0-0	0-0-0	0	0	1	0	0	0	5
Ethridge	0-3	0-2	0-0	1-0-1	0	0	0	5	0	2	16
Lee	0-0	0-0	0-0	0-0-0	1	0	0	0	0	0	2
Rydalch	0-0	0-0	0-0	0-0-0	1	0	0	0	1	0	3
Totals	15-51	3-15	5-8	5-20-25	18	38	5	25	3	14	200
Pct.	29.4	20.0	62.5	DB: 2							

FG's (1Q: 3-15, 20.0%; 2Q: 3-11, 27.3%; 3Q: 3-10, 30.0%; 4Q: 6-15, 40.0%)
 3FG's (1Q: 2-2, 100.0%; 2Q: 0-0, 0.0%; 3Q: 1-4, 25.0%; 4Q: 4-5, 80.0%)
 FT's (1Q: 2-2, 100.0%; 2Q: 1-4, 25.0%; 3Q: 4-7, 57.1%; 4Q: 4-6, 66.7%)

Officials: Denise Brooks, Robert Enterline, Jenna Schroeder
 Attendance: 2,923 • Technical Fouls: Duke-none. UNLV-Team.

Score by Periods

	1st	2nd	3rd	4th	Total
UNLV	9	8	6	15	38
DUKE	12	13	19	22	66

Duke Basketball

Head Coach Joanne P. McCallie

12th Season at Duke

27th Year as Head Coach

Accomplishments (Heading into 2018-19)

- Collected 300 victories in only 382 games becoming the quickest ACC head coach to reach 300 wins at a school.
- Inducted into the Maine Basketball Hall of Fame in August of 2014.
- Named the ACC Coach of the Year in 2010, 2012 and 2013.
- Led the Blue Devils to the 2010, 2011 and 2013 ACC Championship, which gave Duke the eighth conference title in school history.
- Guided the Blue Devils to at least the share of the ACC regular season title in four straight years from 2010-13.
- Has led Duke to 302 overall wins and 132 league victories in her 11 years with the Blue Devils.
- Became the 15th fastest women's basketball coach to reach 600 wins, accomplishing it in only 821 games. In terms of years it took to reach this milestone, she is tied for the 10th fastest to reach 600 wins.
- Brought in back-to-back No. 1 classes in 2010 and 2011 as well as the No. 1 class in 2015, while securing the No. 2 class in 2013 and 2014.
- Had five Blue Devils taken in the first round of the WNBA Draft since arriving at Duke, while a total of 10 Duke players have been drafted over the last nine years.
- Is the third-quickest NCAA Division I head coach to reach 150 wins at an

Twitter: @DukeWBB, @CoachPDuke

institution doing so in only 182 games.

- Became the first Division I head coach to win a conference title in four different leagues - ACC, Big Ten, America East, North Atlantic.
- Won 82 games in her first three years at Duke, which is the second-most in NCAA Division I history by a coach in the first three years at a school.
- Is the first Division I head coach to be named conference coach of the year in four different conferences.
- Reached 100 wins at Duke in only 122 games, the second-quickest to ever reach 100 wins at a school.
- Led Duke to its 10th 30-win season out of the last 13 years in 2012-13.
- Became only the second Division I head coach to lead two different programs to 30-win seasons and lead two different programs to a No. 1 seed in the NCAA Tournament.
- Is one of only three Division I head coaches to guide three different programs to the NCAA Tournament.
- Coach P is one of only four head coaches in Division I history to lead three different programs to 25 or more wins in a single season.
- Won a gold medal as coach of the 2006 U20 National team and the 2007 U21 World Championship team.
- In 2005, led MSU to the Big Ten regular season and tournament championships and the NCAA National Championship game.



Coach P Year-by-Year

Year.....	Team	Overall Record	League Record	Postseason
		(Winning %)	(Winning %)	
1992-93	Maine	9-20 (.310)	4-10 (.286)	North Atlantic Tournament Runner-up
1993-94	Maine	20-7 (.741)	12-2 (.857)	North Atlantic Regular-Season Champion
1994-95	Maine	24-6 (.800)	14-2 (.875)	*North Atlantic Champion/NCAA Tournament
1995-96	Maine	27-5 (.844)	18-0 (1.000)	*North Atlantic Champion/NCAA Tournament
1996-97	Maine	22-8 (.733)	17-1 (.944)	*America East Champion/NCAA Tournament
1997-98	Maine	21-9 (.700)	13-5 (.722)	America East Tourn. Champ/NCAA Tournament
1998-99	Maine	24-7 (.774)	17-1 (.944)	America East Regular-Season Champion/NCAA Tournament Second Round
1999-2000	Maine	20-11 (.645)	14-4 (.778)	NCAA Tournament
2000-01	Mich. State	10-18 (.357)	4-12 (.250)	N/A
2001-02	Mich. State	19-13 (.594)	6-10 (.375)	WNIT Semifinals
2002-03	Mich. State	17-12 (.586)	10-6 (.625)	NCAA Tournament
2003-04	Mich. State	22-9 (.710)	10-6 (.625)	NCAA Tournament Second Round
2004-05	Mich. State	33-4 (.892)	13-2 (.867)	*Big Ten Champion/NCAA Tournament National Finalist
2005-06	Mich. State	24-10 (.706)	11-5 (.688)	NCAA Tournament Sweet 16
2006-07	Mich. State	24-9 (.727)	14-2 (.875)	NCAA Tournament Second Round
2007-08	Duke	25-10 (.714)	10-4 (.714)	NCAA Tournament Sweet 16
2008-09	Duke	27-6 (.818)	11-3 (.786)	NCAA Tournament Second Round
2009-10	Duke	30-6 (.833)	12-2 (.857)	*ACC Champion/NCAA Tournament Elite Eight
2010-11	Duke	32-4 (.889)	12-2 (.857)	*ACC Champion/NCAA Tournament Elite Eight
2011-12	Duke	27-6 (.818)	15-1 (.938)	ACC Regular Season Champion/NCAA Tournament Elite Eight
2012-13	Duke	33-3 (.917)	17-1 (.944)	*ACC Champion/NCAA Tournament Elite Eight
2013-14	Duke	28-7 (.800)	12-4 (.750)	NCAA Tournament Second Round
2014-15	Duke	23-11 (.677)	11-5 (.688)	NCAA Tournament Sweet 16
2015-16	Duke	20-12 (.625)	8-8 (.500)	N/A
2016-17	Duke	28-6 (.824)	13-3 (.813)	NCAA Tournament Second Round
2017-18	Duke	24-9 (.727)	11-5 (.688)	NCAA Tournament Sweet 16
2018-19	Duke	6-3 (.625)	--	--

*Regular season and tournament

Career Total (26 Years): 619-231 (.728) 311-107 (.744)..... 21 NCAA Tournament Appearances; Eight Conference Championships
Duke (11 Years):..... 303-83 (.785) 132-38 (.776) 10 NCAA Tournament Appearances; Three ACC Championships
Michigan St. (7 Years):..... 149-75 (.665) 68-44 (.607) Five NCAA Tournament Appearances; One Big Ten Championship
Maine (8 Years): 167-73 (.695) 109-25 (.813) Six NCAA Tournaments; Two America East Tournament & Two North Atlantic Champ.

THE STAT CREW SYSTEM
Duke Combined Team Statistics (as of Dec 06, 2018)
All games

RECORD:	OVERALL	HOME	AWAY	NEUTRAL
ALL GAMES	6-3	3-0	2-1	1-2
CONFERENCE	0-0	0-0	0-0	0-0
NON-CONFERENCE	6-3	3-0	2-1	1-2

#	Player	gp-gs	min	avg	Total		3-Point		F-Throw		Rebounds				pf	dq	a	to	blk	stl	pts	avg
					fg-fga	fg%	3fg-fga	3fg%	ft-fa	ft%	off	def	tot	avg								
02	Haley Gorecki	9-9	320	35.6	49-141	.348	19-69	.275	32-46	.696	3	47	50	5.6	17	1	31	27	1	27	149	16.6
05	Leaonna Odom	9-9	299	33.2	62-109	.569	0-1	.000	19-31	.613	24	50	74	8.2	23	0	20	43	7	15	143	15.9
12	Mikayla Boykin	1-0	20	20.0	4-8	.500	1-3	.333	2-2	1.000	1	3	4	4.0	0	0	6	3	0	5	11	11.0
03	Miela Goodchild	9-7	283	31.4	32-70	.457	19-40	.475	5-7	.714	3	15	18	2.0	18	0	19	31	2	9	88	9.8
25	Jade Williams	9-3	215	23.9	25-54	.463	0-0	.000	8-17	.471	25	20	45	5.0	29	2	6	14	6	6	58	6.4
14	Faith Suggs	9-9	195	21.7	17-33	.515	1-3	.333	8-16	.500	7	24	31	3.4	16	0	7	16	3	9	43	4.8
24	O. Akinbode-James	9-7	189	21.0	17-40	.425	0-0	.000	9-16	.563	22	34	56	6.2	25	0	6	21	6	10	43	4.8
23	Rayah Craig	9-1	89	9.9	9-21	.429	4-10	.400	3-4	.750	4	7	11	1.2	12	1	5	11	1	5	25	2.8
32	Jayda Adams	9-0	123	13.7	8-20	.400	5-11	.455	3-6	.500	2	4	6	0.7	7	0	11	4	2	6	24	2.7
11	Sofia Roma	8-0	44	5.5	3-5	.600	0-0	.000	1-1	1.000	3	6	9	1.1	7	0	1	4	2	1	7	0.9
44	Madison Treece	4-0	17	4.3	0-1	.000	0-1	.000	1-2	.500	4	0	4	1.0	4	0	1	3	0	0	1	0.3
30	Emily Schubert	1-0	3	3.0	0-0	.000	0-0	.000	0-0	.000	0	0	0	0.0	0	0	0	0	0	0	0	0.0
13	Uchenna Nwoke	3-0	3	1.0	0-0	.000	0-0	.000	0-0	.000	0	0	0	0.0	1	0	0	1	0	0	0	0.0
Team											20	11	31				2					
Total.....		9	1800		226-502	.450	49-138	.355	91-148	.615	118	221	339	37.7	159	4	113	180	30	93	592	65.8
Opponents.....		9	1800		192-511	.376	66-215	.307	103-144	.715	111	185	296	32.9	142	-	126	168	23	75	553	61.4

TEAM STATISTICS	DU	OPP	Date	Opponent	Score	Att.
SCORING	592	553	11-11-18	at Northwestern	L 58-84	2258
Points per game	65.8	61.4	11-15-18	at Maine	w 66-63	2868
Scoring margin	+4.3	-	11-18-18	ELON	w 81-64	3313
FIELD GOALS-ATT	226-502	192-511	~ 11-23-18	vs Washington	L 64-71	458
Field goal pct	.450	.376	~ 11-24-18	vs Ball State	w 79-62	516
3 POINT FG-ATT	49-138	66-215	~ 11-25-18	vs #21/18 Missouri	L 54-62	762
3-point FG pct	.355	.307	11-28-18	at Wisconsin	w 60-53	3483
3-pt FG made per game	5.4	7.3	12-02-18	MARIST	w 64-56	2923
FREE THROWS-ATT	91-148	103-144	12-06-18	UNLV	w 66-38	3018
Free throw pct	.615	.715				
F-Throws made per game	10.1	11.4				
REBOUNDS	339	296				
Rebounds per game	37.7	32.9				
Rebounding margin	+4.8	-				
ASSISTS	113	126				
Assists per game	12.6	14.0				
TURNOVERS	180	168				
Turnovers per game	20.0	18.7				
Turnover margin	-1.3	-				
Assist/turnover ratio	0.6	0.8				
STEALS	93	75				
Steals per game	10.3	8.3				
BLOCKS	30	23				
Blocks per game	3.3	2.6				
ATTENDANCE	9254	10345				
Home games-Avg/Game	3-3085	3-2870				
Neutral site-Avg/Game	-	3-579				

* = Conference game
~ = Gulf Coast Showcase in Estero, Fla.

Score by Periods	1st	2nd	3rd	4th	Totals
Duke	128	149	151	164	592
Opponents	113	136	137	167	553

THE STAT CREW SYSTEM
Duke Game-by-Game Highs (as of Dec 06, 2018)
All games

Opponent	Date	Score	Points	Rebounds	Assists	Steals	Blocked shots
at Northwestern	11-11-18	58-84	14-Leaonna Odom	14-Leaonna Odom	3-Haley Gorecki	3-Miela Goodchild Haley Gorecki	1-Sofia Roma
at Maine	11-15-18	66-63	21-Haley Gorecki	6-Haley Gorecki Jade Williams	10-Haley Gorecki	7-Haley Gorecki	3-Leaonna Odom
ELON	11-18-18	81-64	23-Leaonna Odom	10-Leaonna Odom	4-Jayda Adams	4-Haley Gorecki	4-O. Akinbode-James
vs Washington	11-23-18	64-71	20-Haley Gorecki	10-Leaonna Odom	5-Haley Gorecki	3-Jade Williams	1-Faith Suggs Leaonna Odom
vs Ball State	11-24-18	79-62	19-Haley Gorecki	9-Leaonna Odom	6-Leaonna Odom	3-Miela Goodchild Haley Gorecki	2-Jade Williams
vs #21/18 Missouri	11-25-18	54-62	24-Haley Gorecki	11-O. Akinbode-Jame	2-Miela Goodchild Faith Suggs	2-Haley Gorecki Leaonna Odom Rayah Craig	1-Leaonna Odom Faith Suggs
at Wisconsin	11-28-18	60-53	14-Haley Gorecki O. Akinbode-James	14-O. Akinbode-Jame	4-Miela Goodchild	2-Leaonna Odom O. Akinbode-James Miela Goodchild	2-Jayda Adams
MARIST	12-02-18	64-56	20-Leaonna Odom	11-Leaonna Odom	5-Haley Gorecki	5-Haley Gorecki Leaonna Odom	1-Jade Williams Leaonna Odom
UNLV	12-06-18	66-38	14-Miela Goodchild	7-O. Akinbode-James	6-Mikayla Boykin	5-Mikayla Boykin	2-Jade Williams

THE STAT CREW SYSTEM
Duke Points-Rebounds-Assists (as of Dec 06, 2018)
All games

Opponent	Date	Score		02	03	05	11	12	13	14
				GORECKI,HA	GOODCHILD,	ODOM,LEON	ROMA,SOFIA	BOYKIN,MIK	NWOKE,UCHE	SUGGS,FAIT
at Northwestern	11-11-18	58-84	L	10-4-3	4-2-1	14-14-0	2-1-0	DNP	DNP	4-3-2
at Maine	11-15-18	66-63	W	21-6-10	14-2-0	16-5-3	0-0-0	DNP	DNP	0-2-0
ELON	11-18-18	81-64	W	12-5-3	10-1-3	23-10-3	0-0-0	DNP	0-0-0	12-4-0
vs Washington	11-23-18	64-71	L	20-6-5	12-2-3	19-10-4	DNP	DNP	DNP	5-5-0
vs Ball State	11-24-18	79-62	W	19-5-2	13-3-2	13-9-6	0-3-0	DNP	0-0-0	12-6-1
vs #21/18 Missouri	11-25-18	54-62	L	24-7-1	5-3-2	15-4-0	2-3-1	DNP	DNP	2-2-2
at Wisconsin	11-28-18	60-53	W	14-4-2	7-1-4	12-5-1	3-2-0	DNP	DNP	3-3-0
MARIST	12-02-18	64-56	W	17-8-5	9-0-3	20-11-1	0-0-0	DNP	DNP	1-2-2
UNLV	12-06-18	66-38	W	12-5-0	14-4-1	11-6-2	0-0-0	11-4-6	0-0-0	4-4-0

Opponent	Date	Score		23	24	25	30	32	44
				CRAIG,RAYA	AKINBODE-J	WILLIAMS,J	SCHUBERT,E	ADAMS,JAYD	TREECE,MAD
at Northwestern	11-11-18	58-84	L	13-2-0	5-2-2	6-4-0	DNP	0-0-0	0-0-1
at Maine	11-15-18	66-63	W	0-2-1	2-3-1	11-6-1	DNP	2-0-1	DNP
ELON	11-18-18	81-64	W	8-1-1	4-6-0	8-8-1	DNP	3-1-4	1-4-0
vs Washington	11-23-18	64-71	L	0-0-1	0-3-0	6-5-0	DNP	2-0-0	DNP
vs Ball State	11-24-18	79-62	W	3-1-1	7-6-1	9-3-2	DNP	3-3-2	DNP
vs #21/18 Missouri	11-25-18	54-62	L	0-0-0	5-11-0	1-0-0	DNP	0-0-0	DNP
at Wisconsin	11-28-18	60-53	W	0-1-0	14-14-0	2-5-1	DNP	5-0-1	0-0-0
MARIST	12-02-18	64-56	W	0-2-1	3-4-1	11-8-0	DNP	3-0-1	DNP
UNLV	12-06-18	66-38	W	1-2-0	3-7-1	4-6-1	0-0-0	6-2-2	0-0-0

THE STAT CREW SYSTEM
Duke Team Game-by-Game (as of Dec 06, 2018)
All games

TEAM STATISTICS

Opponent	Date	Score		Total		3-Pointers		Free throws		Rebounds				pf	a	t/o	blk	stl	pts	avg
				fg-fga	pct	3fg-fga	pct	ft-fa	pct	off	def	tot	avg							
at Northwestern	11-11-18	58-84	L	21-60	.350	3-16	.188	13-17	.765	16	22	38	38.0	26	9	24	1	11	58	58.0
at Maine	11-15-18	66-63	W	26-48	.542	8-19	.421	6-14	.429	5	22	27	32.5	11	17	15	4	12	66	62.0
ELON	11-18-18	81-64	W	34-65	.523	4-16	.250	9-16	.563	18	23	41	35.3	20	15	16	7	10	81	68.3
vs Washington	11-23-18	64-71	L	23-57	.404	6-16	.375	12-18	.667	14	17	31	34.2	19	13	21	2	10	64	67.2
vs Ball State	11-24-18	79-62	W	32-61	.525	8-18	.444	7-15	.467	16	29	45	36.4	22	17	29	6	12	79	69.6
vs #21/18 Missouri	11-25-18	54-62	L	19-49	.388	5-17	.294	11-18	.611	10	25	35	36.2	17	6	14	2	7	54	67.0
at Wisconsin	11-28-18	60-53	W	25-58	.431	3-13	.231	7-9	.778	13	25	38	36.4	22	9	19	2	9	60	66.0
MARIST	12-02-18	64-56	W	22-51	.431	5-12	.417	15-22	.682	15	27	42	37.1	10	14	19	2	13	64	65.8
UNLV	12-06-18	66-38	W	24-53	.453	7-11	.636	11-19	.579	11	31	42	37.7	12	13	23	4	9	66	65.8
Duke		592		226-502	.450	49-138	.355	91-148	.615	118	221	339	37.7	159	113	180	30	93	592	65.8
Opponents		553		192-511	.376	66-215	.307	103-144	.715	111	185	296	32.9	142	126	168	23	75	553	61.4

Games played: 9
Points/game: 65.8
FG Pct: 45.0
3FG Pct: 35.5
FT Pct: 61.5

Rebounds/game: 37.7
Assists/game: 12.6
Turnovers/game: 20.0
Assist/turnover ratio: 0.6
Steals/game: 10.3
Blocks/game: 3.3

THE STAT CREW SYSTEM
Duke Team Game-by-Game Comparison (as of Dec 06, 2018)
All games

Opponent	1st	2nd	Score	Mar	Total FG	FG Pct	3-Pointers	3FG Pct	Free Throws	FT Pct	Rebounds	Assist	T/Over	Block	Steal	Fouls
Northwestern	25/33	33/51	58-84	(26)	21-60/26-64	.350/.406	3-16/8-20	.188/.400	13-17/24-29	.765/.828	38/42 (4)	9/19	24/14	1/2	11/11	26/19
Maine	27/22	39/41	66-63	+3	26-48/27-61	.542/.443	8-19/7-27	.421/.259	6-14/2-2	.429/1000	27/33 (6)	17/16	15/16	4/1	12/7	11/13
ELON	48/39	33/25	81-64	+17	34-65/21-53	.523/.396	4-16/7-23	.250/.304	9-16/15-23	.563/.652	41/30 +11	15/16	16/19	7/2	10/5	20/15
Washington	24/37	40/34	64-71	(7)	23-57/25-53	.404/.472	6-16/8-26	.375/.308	12-18/13-18	.667/.722	31/35 (4)	13/17	21/19	2/1	10/12	19/18
Ball State	44/27	35/35	79-62	+17	32-61/20-65	.525/.308	8-18/5-25	.444/.200	7-15/17-23	.467/.739	45/38 +7	17/9	29/22	6/4	12/8	22/13
#21/18 Missouri	26/26	28/36	54-62	(8)	19-49/19-54	.388/.352	5-17/16-34	.294/.471	11-18/8-10	.611/.800	35/31 +4	6/17	14/16	2/2	7/4	17/16
Wisconsin	30/19	30/34	60-53	+7	25-58/18-50	.431/.360	3-13/3-16	.231/.188	7-9/14-23	.778/.609	38/31 +7	9/10	19/20	2/3	9/9	22/15
MARIST	28/29	36/27	64-56	+8	22-51/21-60	.431/.350	5-12/9-29	.417/.310	15-22/5-8	.682/.625	42/31 +11	14/17	19/17	2/5	13/5	10/15
UNLV	25/17	41/21	66-38	+28	24-53/15-51	.453/.294	7-11/3-15	.636/.200	11-19/5-8	.579/.625	42/25 +17	13/5	23/25	4/3	9/14	12/18

Note: Game totals are displayed in the format TEAM/OPPONENT for each category

THE STAT CREW SYSTEM
Duke Season Schedule/Results & Leaders (as of Dec 06, 2018)
All games

RECORD:	OVERALL	HOME	AWAY	NEUTRAL
ALL GAMES	6-3	3-0	2-1	1-2
CONFERENCE	0-0	0-0	0-0	0-0
NON-CONFERENCE	6-3	3-0	2-1	1-2

Date	Opponent	Score	Att.	High Points	High Rebounds
11-11-18	at Northwestern	58-84 L	2258	(14)Leaonna Odom	(14)Leaonna Odom
11-15-18	at Maine	W 66-63	2868	(21)Haley Gorecki	(6)Jade Williams (6)Haley Gorecki
11-18-18	ELON	W 81-64	3313	(23)Leaonna Odom	(10)Leaonna Odom
11-23-18	~vs Washington	64-71 L	458	(20)Haley Gorecki	(10)Leaonna Odom
11-24-18	~vs Ball State	W 79-62	516	(19)Haley Gorecki	(9)Leaonna Odom
11-25-18	~vs #21/18 Missouri	54-62 L	762	(24)Haley Gorecki	(11)O. Akinbode-James
11-28-18	at Wisconsin	W 60-53	3483	(14)O. Akinbode-James (14)Haley Gorecki	(14)O. Akinbode-James
12-02-18	MARIST	W 64-56	2923	(20)Leaonna Odom	(11)Leaonna Odom
12-06-18	UNLV	W 66-38	3018	(14)Miela Goodchild	(7)O. Akinbode-James

* = Conference game

~ = Gulf Coast Showcase in Estero, Fla.

Attendance Summary	Games	Attend	Avg/Game
Home	3	9254	3085
Away	3	8609	2870
Neutral	3	1736	579
Total	9	19599	2178



HALEY GORECKI
 #2 • G • 6-0 • RJR.
 Palatine, Ill.
 William Fremd

#2 HALEY GORECKI

NOTES:

Returning from the second hip injury of her career ... Registered her second career double-double at Maine (11.15.18) with 21 points and 10 assists ... Reached 20+ points for the second time this season and the sixth time in her career

2018-19 HONORS:

Team Captain

CAREER HIGHS

PTS	29	at North Carolina (1.21.18)
REB	10	vs. Maine (12.19.17)
AST	10	at Maine (11.15.18)
FG	10	at Louisville (1.4.18)
FGA	22	at North Carolina (1.21.18)
FG%	1.000 (4-4)	vs. Texas State (11.28.15)
3FG	7	2x, last at North Carolina (1.21.18)
3FGA	15	at North Carolina (1.21.18)
FT	7	vs. Marist (12.2.18)
FTA	11	2x, last vs. Missouri (11.25.18)
FT%	1.000 (5-5)	vs. Western Carolina (12.29.15)
BLK	2	at Louisville (1.4.18)
STL	7	at Maine (11.15.18)
MIN	41	at North Carolina (1.21.18)

SEASON HIGHS

PTS	24	vs. Missouri (11.25.18)
REB	8	vs. Marist (12.2.18)
AST	10	at Maine (11.15.18)
FG	8	vs. Ball State (11.24.18)
FGA	20	vs. Missouri (11.25.18)
FG%	.583 (7-12)	at Maine (11.15.18)
3FG	4	2x, last vs. Missouri (11.25.18)
3FGA	12	vs. Missouri (11.25.18)
FT	7	vs. Marist (12.2.18)
FTA	11	vs. Washington (11.23.18)
FT%	.875 (7-8)	vs. Marist (12.2.18)
BLK	1	vs. Elon (11.18.18)
STL	7	at Maine (11.15.18)
MIN	39	2x, last vs. Washington (11.23.18)

MISC.	SEASON	CAREER
10+ PTS	9	21
20+ PTS	3	7
5+ REB	7	17
10+ REB		1
3+ AST	5	18
3+ STL	5	10
20+ MIN	9	25
Double-Double	1	2
Triple-Double		0
Led Duke in scoring	4	8
Led Duke in rebounding	1	3
Charges taken		2

2018-19 GAME-BY-GAME

DATE	OPPONENT	MIN	FG	3FG	FT	O-D-R	A	T	B	S	TP
11.11	at Northwestern*	38	4-19	2-11	0-0	0-4-4	3	6	0	3	10
11.15	at Maine*	39	7-12	4-9	3-6	1-5-6	10	5	0	7	21
11.18	Elon*	32	5-15	0-6	2-3	0-5-5	3	1	1	4	12
11.23	vs. Washington*	39	6-17	2-8	6-11	2-4-6	5	2	0	2	20
11.24	vs. Ball State*	33	8-16	3-7	0-1	0-5-5	2	0	0	3	19
11.25	vs. Missouri*	38	7-20	4-12	6-8	0-7-7	1	1	0	2	24
11.28	at Wisconsin*	38	5-17	1-6	3-3	0-4-4	2	2	0	0	14
12.2	Marist*	37	4-17	2-8	7-8	0-8-8	5	3	0	5	17
12.6	UNLV*	26	3-8	1-2	5-6	0-5-5	0	7	0	1	12
12.9	South Carolina										
12.20	at Oregon State										
12.28	East Carolina										
12.30	Florida Gulf Coast										
1.3	at NC State										
1.6	Louisville										
1.10	at Georgia Tech										
1.17	Miami										
1.20	at Florida State										
1.24	Wake Forest										
1.27	Syracuse										
1.31	at Boston College										
2.3	Pittsburgh										
2.7	at North Carolina										
2.10	at Virginia										
2.14	Virginia Tech										
2.21	at Notre Dame										
2.24	at Wake Forest										
2.28	Clemson										
3.3	North Carolina										

* Denotes Started Game; ^ Denotes ACC Tournament; # Denotes NCAA Tournament

GORECKI CAREER STATISTICS

YEAR	GP	GS	MIN	AVG	FG	FGA	PCT	3FG	3FGA	PCT	FT	FTA	PCT	OFF	DEF	REB	AVG	PF	FO	AST	TO	BLK	STL	PTS	AVG
2015-16	14	1	227	16.2	20	72	.278	8	36	.222	15	17	.882	12	25	37	2.6	9	0	15	25	1	16	63	4.5
2016-17	0	0	0	0.0	0	0	.000	0	0	.000	0	0	.000	0	0	0	0.0	0	0	0	0	0	0	0	0.0
2017-18	23	13	575	25.0	85	201	.423	44	104	.423	38	53	.717	10	79	89	3.9	24	0	66	49	4	30	252	11.0
2018-19	9	9	320	35.6	49	141	.348	19	69	.275	32	46	.696	3	47	50	5.6	17	1	31	27	1	27	149	16.6
TOTAL	46	23	1122	24.4	154	414	.372	71	209	.340	85	116	.733	25	151	176	3.8	50	1	112	101	6	73	464	10.1



MIELA GOODCHILD
 #3 • G • 5-10 • FR.
 Queensland, Australia
 Moreton Bay College

#3 MIELA GOODCHILD

NOTES:

Led the Australia U18 squad to a bronze medal in India from Oct. 27-Nov. 3 at the FIBA Asian Championship ... Came off the bench at Maine (11.15.18) and totaled a career-high 14 points in 30 minutes ... Notched double-digit scoring in four consecutive games vs. Ball State ... Started her sixth-consecutive contest versus Marist (12.2.18)

2018-19 Honors:

SEASON/CAREER HIGHS

PTS	14	2x, last vs. UNLV (12.6.18)
REB	4	vs. UNLV (12.6.18)
AST	4	at Wisconsin (11.28.18)
FG	5	3x, last vs. UNLV (12.6.18)
FGA	10	at Maine (11.15.18)
FG%	.555 (5-9)	vs. UNLV (12.6.18)
3FG	4	2x, last vs. UNLV (12.6.18)
3FGA	8	at Maine (11.15.18)
FT	2	at Northwestern (11.11.18)
FTA	2	at Northwestern (11.11.18)
FT%	1.000 (2-2)	at Northwestern (11.11.18)
BLK	1	2x, last vs. Ball State (11.24.18)
STL	4	at Wisconsin (11.28.18)
MIN	38	vs. Marist (12.2.18)

MISC.	SEASON/CAREER
10+ PTS	5
20+ PTS	
5+ REB	
10+ REB	
3+ AST	4
3+ STL	2
20+ MIN	9
Double-Double	
Triple-Double	
Led Duke in scoring	1
Led Duke in rebounding	
Charges taken	

2018-19 GAME-BY-GAME

DATE	OPPONENT	MIN	FG	3FG	FT	O-D-R	A	T	B	S	TP
11.11	at Northwestern	26	1-4	0-2	2-2	1-1-2	1	4	0	3	4
11.15	at Maine	30	5-10	4-8	0-0	0-2-2	0	2	0	1	14
11.18	Elon*	27	4-8	1-3	1-2	0-1-1	3	2	1	0	10
11.23	vs. Washington*	32	4-9	3-5	1-1	0-2-2	3	4	0	0	12
11.24	vs. Ball State*	32	5-9	3-7	0-0	0-3-3	2	8	1	3	13
11.25	vs. Missouri*	35	2-5	1-3	0-0	0-3-3	2	4	0	0	5
11.28	at Wisconsin*	35	3-9	1-4	0-0	1-0-1	4	2	0	2	7
12.2	Marist*	38	3-7	2-3	1-2	0-0-0	3	2	0	0	9
12.6	UNLV*	28	5-9	4-5	0-0	1-3-4	1	3	0	0	14
12.9	South Carolina										
12.20	at Oregon State										
12.28	East Carolina										
12.30	Florida Gulf Coast										
1.3	at NC State										
1.6	Louisville										
1.10	at Georgia Tech										
1.17	Miami										
1.20	at Florida State										
1.24	Wake Forest										
1.27	Syracuse										
1.31	at Boston College										
2.3	Pittsburgh										
2.7	at North Carolina										
2.10	at Virginia										
2.14	Virginia Tech										
2.21	at Notre Dame										
2.24	at Wake Forest										
2.28	Clemson										
3.3	North Carolina										

* Denotes Started Game; ^ Denotes ACC Tournament; # Denotes NCAA Tournament

GOODCHILD CAREER STATISTICS

YEAR	GP	GS	MIN	AVG	FG	FGA	PCT	3FG	3FGA	PCT	FT	FTA	PCT	OFF	DEF	REB	AVG	PF	FO	AST	TO	BLK	STL	PTS	AVG
2018-19	9	7	283	31.4	32	70	.457	19	40	.475	5	7	.714	3	15	18	2.0	18	0	19	31	2	9	88	9.8
TOTAL	9	7	283	31.4	32	70	.457	19	40	.475	5	7	.714	3	15	18	2.0	18	0	19	31	2	9	88	9.8



LEONNA ODOM
 #5 • F • 6-2 • JR.
 Lompoc, Calif.
 Chaminade

#5 LEONNA ODOM

NOTES: Talled her fifth career double-double at Northwestern (14 pts/14 boards) ... scored a season-high 23 points vs. Elon (11.18.18) for her second double-double of the season ... Collected her third double-double in four games to open the season vs. Washington ... Added her fourth double-double of the season against Marist (12.2.18)

2018-19 HONORS:
 John R. Wooden Award Candidate
 Cheryl Miller Award Watch List
 Naismith Award Watch List

CAREER HIGHS

PTS	25	vs. Belmont (3.17.18)
REB	14	at Northwestern (11.11.18)
AST	6	2x, last vs. Ball State (11.24.18)
FG	11	vs. Belmont (3.17.18)
FGA	19	vs. Florida State (2.19.18)
FG%	1.000 (5-5)	vs. Miami (3.4.17)
3FG		
3FGA	1	4x, last vs. Washington (11.23.18)
FT	7	vs. Hampton (3.18.17)
FTA	8	2x, last at Syracuse (2.15.18)
FT%	1.000 (4-4)	at Wake Forest (1.11.18)
BLK	4	2x, last vs. Ohio State (11.30.17)
STL	5	3x, last vs. Marist (12.2.18)
MIN	39	vs. Florida State (2.19.18)

SEASON HIGHS

PTS	23	vs. Elon (11.18.18)
REB	14	at Northwestern (11.11.18)
AST	6	vs. Ball State (11.24.18)
FG	10	vs. Elon (11.18.18)
FGA	14	3x, last vs. Marist (12.2.18)
FG%	.857 (6-7)	at Wisconsin (11.28.18)
3FG		
3FGA	1	vs. Washington (11.23.18)
FT	5	vs. Washington (11.23.18)
FTA	6	vs. Washington (11.23.18)
FT%	.833 (5-6)	vs. Washington (11.23.18)
BLK	3	at Maine (11.15.18)
STL	5	vs. Marist (12.2.18)
MIN	38	vs. Washington (11.23.18)

MISC.	SEASON	CAREER
10+ PTS	9	32
20+ PTS	2	5
5+ REB	8	45
10+ REB	4	11
3+ AST	4	10
3+ BLK	1	6
20+ MIN	9	59
Double-Double	4	8
Triple-Double		0
Led Duke in scoring	3	7
Led Duke in rebounding	5	28
Charges taken		3

2018-19 GAME-BY-GAME

DATE	OPPONENT	MIN	FG	3FG	FT	O-D-R	A	T	B	S	TP
11.11	at Northwestern*	36	6-12	0-0	2-4	5-9-14	0	8	0	1	14
11.15	at Maine*	29	8-13	0-0	0-0	0-5-5	3	2	3	1	16
11.18	Elon*	33	10-14	0-0	3-4	2-8-10	3	2	0	0	23
11.23	vs. Washington*	38	7-17	0-1	5-6	5-5-10	4	7	1	2	19
11.24	vs. Ball State*	31	6-14	0-0	1-4	3-6-9	6	7	0	1	13
11.25	vs. Missouri*	37	6-11	0-0	3-4	3-1-4	0	1	1	2	15
11.28	at Wisconsin*	29	6-7	0-0	0-1	2-3-5	1	7	0	2	12
12.2	Marist*	37	8-14	0-0	4-5	3-8-11	1	6	1	5	20
12.6	UNLV*	29	5-7	0-0	1-3	1-5-6	2	3	1	1	11
12.9	South Carolina										
12.20	at Oregon State										
12.28	East Carolina										
12.30	Florida Gulf Coast										
1.3	at NC State										
1.6	Louisville										
1.10	at Georgia Tech										
1.17	Miami										
1.20	at Florida State										
1.24	Wake Forest										
1.27	Syracuse										
1.31	at Boston College										
2.3	Pittsburgh										
2.7	at North Carolina										
2.10	at Virginia										
2.14	Virginia Tech										
2.21	at Notre Dame										
2.24	at Wake Forest										
2.28	Clemson										
3.3	North Carolina										

* Denotes Started Game; ^ Denotes ACC Tournament; # Denotes NCAA Tournament

ODOM CAREER STATISTICS

YEAR	GP	GS	MIN	AVG	FG	FGA	PCT	3FG	3FGA	PCT	FT	FTA	PCT	OFF	DEF	REB	AVG	PF	FO	AST	TO	BLK	STL	PTS	AVG
2016-17	34	17	784	23.1	115	212	.542	0	2	.000	46	72	.639	75	81	156	4.6	82	0	24	49	32	39	276	8.1
2017-18	33	27	987	29.9	139	263	.529	0	1	.000	40	67	.597	71	136	207	6.3	78	0	55	57	38	36	318	9.6
2018-19	9	9	299	33.2	62	109	.569	0	1	.000	19	31	.613	24	50	74	8.2	23	0	20	43	7	15	143	15.9
TOTAL	76	53	2070	27.2	316	584	.541	0	4	.000	105	170	.618	170	267	437	5.8	183	0	99	149	77	90	737	9.7



SOFIA ROMA
 #11 • C • 6-2 • RSR.
 Richmond Hill, N.Y.
 Wagner College

#11 SOFIA ROMA

NOTES: Played five minutes in the second quarter and totaled two points, three rebounds, one assist and one steal vs. Missouri (11.25.18)

2018-19 HONORS:
 Team Captain

CAREER HIGHS

PTS	13	at Mount St. Mary's (1.31.15)
REB	22	at Mount St. Mary's (1.31.15)
AST	2	5x, last vs. LIU Brooklyn (1.18.16)
FG	5	vs. Central Conn. (1.31.15)
FGA	9	2x, last at Fairleigh Dickinson (2.22.16)
FG%	1.000 (2-2)	vs. Columbia (12.30.14)
3FG		
3FGA		
FT	7	vs. Central Conn. (1.21.16)
FTA	10	vs. Central Conn. (1.21.16)
FT%	1.000 (4-4)	vs. St. Francis Brooklyn (1.26.15)
BLK	8	at Robert Morris (1.4.16)
STL	3	vs. St. Francis Brooklyn (2.15.16)
MIN	25	vs. Virginia Tech (1.15.15)

SEASON HIGHS

PTS	3	at Wisconsin (11.28.18)
REB	3	2x, last vs. Missouri (11.25.18)
AST	1	vs. Missouri (11.25.18)
FG	1	2x, last vs. Missouri (11.25.18)
FGA	3	at Wisconsin (11.28.18)
FG%	1.000 (1-1)	2x, last vs. Missouri (11.25.18)
3FG		
3FGA		
FT	1	at Wisconsin (11.28.18)
FTA	1	at Wisconsin (11.28.18)
FT%	1.000 (1-1)	at Wisconsin (11.28.18)
BLK	1	2x, last vs. Ball State (11.24.18)
STL	1	vs. Missouri (11.25.18)
MIN	11	vs. Ball State (11.24.18)

MISC.	SEASON	CAREER
10+ PTS		7
20+ PTS		0
5+ REB		40
10+ REB		18
3+ AST		0
3+ BLK		13
20+ MIN		31
Double-Double		6
Triple-Double		0
Led Duke in scoring		0
Led Duke in rebounding		0
Charges taken		0

2018-19 GAME-BY-GAME

DATE	OPPONENT	MIN	FG	3FG	FT	O-D-R	A	T	B	S	TP
11.11	at Northwestern	6	1-1	0-0	0-0	1-0-1	0	1	1	0	2
11.15	at Maine	7	0-0	0-0	0-0	0-0-0	0	0	0	0	0
11.18	Elon	1	0-0	0-0	0-0	0-0-0	0	1	0	0	0
11.23	vs. Washington	-	-	-	-	-	-	-	-	-	-
11.24	vs. Ball State	11	0-0	0-0	0-0	1-2-3	0	1	1	0	0
11.25	vs. Missouri	8	1-1	0-0	0-0	0-3-3	1	0	0	1	2
11.28	at Wisconsin	9	1-3	0-0	1-1	1-1-2	0	1	0	0	3
12.2	Marist	1	0-0	0-0	0-0	0-0-0	0	0	0	0	0
12.6	UNLV	1	0-0	0-0	0-0	0-0-0	0	0	0	0	0
12.9	South Carolina										
12.20	at Oregon State										
12.28	East Carolina										
12.30	Florida Gulf Coast										
1.3	at NC State										
1.6	Louisville										
1.10	at Georgia Tech										
1.17	Miami										
1.20	at Florida State										
1.24	Wake Forest										
1.27	Syracuse										
1.31	at Boston College										
2.3	Pittsburgh										
2.7	at North Carolina										
2.10	at Virginia										
2.14	Virginia Tech										
2.21	at Notre Dame										
2.24	at Wake Forest										
2.28	Clemson										
3.3	North Carolina										

* Denotes Started Game; ^ Denotes ACC Tournament; # Denotes NCAA Tournament

ROMA CAREER STATISTICS

YEAR	GP	GS	MIN	AVG	FG	FGA	PCT	3FG	3FGA	PCT	FT	FTA	PCT	OFF	DEF	REB	AVG	PF	FO	AST	TO	BLK	STL	PTS	AVG
2014-15*	27	1	443	13.8	32	80	.400	0	0	.000	25	55	.455	62	99	161	5.8	66	0	2	43	29	15	89	3.2
2015-16*	27	26	791	28.3	54	142	.380	0	0	.000	51	81	.630	96	185	281	10.0	87	3	18	47	59	15	159	5.7
2016-17	0	0	0	0.0	0	0	.000	0	0	.000	0	0	.000	0	0	0	0.0	0	0	0	0	0	0	0	0.0
2017-18	12	0	71	5.9	4	12	.333	0	0	.000	1	5	.200	6	10	16	1.3	10	0	3	8	0	4	9	0.8
2018-19	8	0	44	5.5	3	5	.600	0	0	.000	1	1	1.000	3	6	9	1.1	7	0	1	4	2	1	7	0.9
TOTAL	74	27	1340	13.4	93	237	.428	0	0	.000	78	142	.571	167	300	467	4.7	168	3	24	102	90	35	264	2.7

* at Wagner College



#12 MIKAYLA BOYKIN

NOTES:

2018-19 HONORS:

MIKAYLA BOYKIN
 #12 • G • 5-9 • RFR.
 Clinton, N.C.
 Clinton

CAREER HIGHS

PTS	12	at Grand Canyon (11.12.17)
REB	7	vs. Winthrop (12.10.17)
AST	7	vs. High Point (11.16.17)
FG	5	at Grand Canyon (11.12.17)
FGA	13	at Grand Canyon (11.12.17)
FG%	1.000 (1-1)	vs. Ohio State (11.30.17)
3FG	2	2x, last vs. Oregon State (11.25.17)
3FGA	4	at Grand Canyon (11.12.17)
FT	2	vs. High Point (11.16.17)
FTA	4	vs. High Point (11.16.17)
FT%	1.000 (2-2)	3x, last vs. UNLV (12.6.18)
BLK		
STL	5	1 vs. UNLV (12.6.18)
MIN	32	at Grand Canyon (11.12.17)

SEASON HIGHS

PTS	11	vs. UNLV (12.6.18)
REB	4	vs. UNLV (12.6.18)
AST	6	vs. UNLV (12.6.18)
FG	4	vs. UNLV (12.6.18)
FGA	8	vs. UNLV (12.6.18)
FG%	.500 (4-8)	vs. UNLV (12.6.18)
3FG	1	vs. UNLV (12.6.18)
3FGA	3	vs. UNLV (12.6.18)
FT	2	vs. UNLV (12.6.18)
FTA	2	vs. UNLV (12.6.18)
FT%	1.000 (2-2)	vs. UNLV (12.6.18)
BLK		
STL	5	vs. UNLV (12.6.18)
MIN	20	vs. UNLV (12.6.18)

MISC.	SEASON	CAREER
10+ PTS	1	2
20+ PTS		
5+ REB		2
10+ REB		
3+ AST	1	5
3+ BLK		2
20+ MIN	1	6
Double-Double		
Triple-Double		
Led Duke in scoring		
Led Duke in rebounding		1
Charges taken	1	3

2018-19 GAME-BY-GAME

DATE	OPPONENT	MIN	FG	3FG	FT	O-D-R	A	T	B	S	TP
11.11	at Northwestern	-	-	-	-	-	-	-	-	-	-
11.15	at Maine	-	-	-	-	-	-	-	-	-	-
11.18	Elon	-	-	-	-	-	-	-	-	-	-
11.23	vs. Washington	-	-	-	-	-	-	-	-	-	-
11.24	vs. Ball State	-	-	-	-	-	-	-	-	-	-
11.25	vs. Missouri	-	-	-	-	-	-	-	-	-	-
11.28	at Wisconsin	-	-	-	-	-	-	-	-	-	-
12.2	Marist	-	-	-	-	-	-	-	-	-	-
12.6	UNLV	20	4-8	1-3	2-2	1-3-4	6	3	0	5	11
12.9	South Carolina										
12.20	at Oregon State										
12.28	East Carolina										
12.30	Florida Gulf Coast										
1.3	at NC State										
1.6	Louisville										
1.10	at Georgia Tech										
1.17	Miami										
1.20	at Florida State										
1.24	Wake Forest										
1.27	Syracuse										
1.31	at Boston College										
2.3	Pittsburgh										
2.7	at North Carolina										
2.10	at Virginia										
2.14	Virginia Tech										
2.21	at Notre Dame										
2.24	at Wake Forest										
2.28	Clemson										
3.3	North Carolina										

* Denotes Started Game; ^ Denotes ACC Tournament; # Denotes NCAA Tournament

BOYKIN CAREER STATISTICS

YEAR	GP	GS	MIN	AVG	FG	FGA	PCT	3FG	3FGA	PCT	FT	FTA	PCT	OFF	DEF	REB	AVG	PF	FO	AST	TO	BLK	STL	PTS	AVG
2017-18	10	8	240	24.0	15	53	.283	6	18	.333	10	14	.714	13	19	32	3.2	17	0	32	20	0	12	46	4.6
2018-19	1	0	20	20.0	4	8	.500	1	3	.333	2	2	1.000	1	3	4	4.0	0	0	6	3	0	5	11	11.0
TOTAL	11	8	260	23.6	19	61	.311	7	21	.333	12	16	.750	14	22	36	3.3	17	0	38	23	0	17	57	5.2



UCHENNA NWOKE
 #13 • C • 6-6 • FR.
 Grand Prairie, Texas
 South Grand Prairie

#13 UCHENNA NWOKE

NOTES:

2018-19 Honors:

SEASON/CAREER HIGHS

PTS	
REB	
AST	
FG	
FGA	
FG%	
3FG	
3FGA	
FT	
FTA	
FT%	
BLK	
STL	
MIN	1 2x, last vs. UNLV (12.6.18)

MISC. SEASON/CAREER

10+ PTS	
20+ PTS	
5+ REB	
10+ REB	
3+ AST	
3+ STL	
20+ MIN	
Double-Double	
Triple-Double	
Led Duke in scoring	
Led Duke in rebounding	
Charges taken	

2018-19 GAME-BY-GAME

DATE	OPPONENT	MIN	FG	3FG	FT	O-D-R	A	T	B	S	TP
11.11	at Northwestern	-	-	-	-	-	-	-	-	-	-
11.15	at Maine	-	-	-	-	-	-	-	-	-	-
11.18	Elon	1	0-0	0-0	0-0	0-0-0	0	1	0	0	0
11.23	vs. Washington	-	-	-	-	-	-	-	-	-	-
11.24	vs. Ball State	-	-	-	-	-	-	-	-	-	-
11.25	vs. Missouri	-	-	-	-	-	-	-	-	-	-
11.28	at Wisconsin	-	-	-	-	-	-	-	-	-	-
12.2	Marist	-	-	-	-	-	-	-	-	-	-
12.6	UNLV	1	0-0	0-0	0-0	0-0-0	0	0	0	0	0
12.9	South Carolina										
12.20	at Oregon State										
12.28	East Carolina										
12.30	Florida Gulf Coast										
1.3	at NC State										
1.6	Louisville										
1.10	at Georgia Tech										
1.17	Miami										
1.20	at Florida State										
1.24	Wake Forest										
1.27	Syracuse										
1.31	at Boston College										
2.3	Pittsburgh										
2.7	at North Carolina										
2.10	at Virginia										
2.14	Virginia Tech										
2.21	at Notre Dame										
2.24	at Wake Forest										
2.28	Clemson										
3.3	North Carolina										

* Denotes Started Game; ^ Denotes ACC Tournament; # Denotes NCAA Tournament

NWOKE CAREER STATISTICS

YEAR	GP	GS	MIN	AVG	FG	FGA	PCT	3FG	3FGA	PCT	FT	FTA	PCT	OFF	DEF	REB	AVG	PF	FO	AST	TO	BLK	STL	PTS	AVG
2018-19	3	0	3	1.0	0	0	.000	0	0	.000	0	0	.000	0	0	0	0.0	1	0	0	1	0	0	0	0.0
TOTAL	3	0	3	1.0	0	0	.000	0	0	.000	0	0	.000	0	0	0	0.0	1	0	0	1	0	0	0	0.0



FAITH SUGGS
 #14 • G/F • 6-1 • SR.
 Flossmoor, Ill.
 Homewood Flossmoor

#14 FAITH SUGGS

NOTES: Registered a career-high 12 points vs. Elon (11.18.18) ... Scored double-digits for the second time in her career with 12 points vs. Ball State (11.24.18)

2018-19 HONORS:
 Team Captain

CAREER HIGHS

PTS	12	2x, last vs. Ball State (11.24.18)
REB	8	2x, last vs. Belmont (3.17.18)
AST	2	2x, last vs. Missouri (11.25.18)
FG	6	vs. Elon (11.18.18)
FGA	7	vs. Elon (11.18.18)
FG%	1.000 (3-3)	vs. Presbyterian (11.26.17)
3FG	2	2x, last vs. Notre Dame (3.4.16)
3FGA	3	5x, last vs. Pittsburgh (2.12.17)
FT	4	vs. Belmont (3.17.18)
FTA	6	3x, last vs. Belmont (3.17.18)
FT%	1.000 (4-4)	vs. Ball State (11.24.18)
BLK	1	3x, last vs. Missouri (11.25.18)
STL	4	at Liberty (11.11.16)
MIN	34	vs. Missouri (11.25.18)

SEASON HIGHS

PTS	12	2x, last vs. Ball State (11.24.18)
REB	6	vs. Ball State (11.24.18)
AST	2	2x, last vs. Missouri (11.25.18)
FG	6	vs. Elon (11.18.18)
FGA	7	vs. Elon (11.18.18)
FG%	.857 (6-7)	vs. Elon (11.18.18)
3FG	1	vs. Washington (11.23.18)
3FGA	1	3x, last vs. Missouri (11.25.18)
FT	4	vs. Ball State (11.24.18)
FTA	4	vs. Ball State (11.24.18)
FT%	1.000 (4-4)	vs. Ball State (11.24.18)
BLK	1	3x, last vs. Missouri (11.25.18)
STL	3	vs. Elon (11.18.18)
MIN	34	vs. Missouri (11.25.18)

MISC.	SEASON	CAREER
10+ PTS	2	2
20+ PTS		0
5+ REB	2	7
10+ REB		0
3+ AST		0
3+ STL	1	2
20+ MIN	5	12
Double-Double		0
Triple-Double		0
Led Duke in scoring		0
Led Duke in rebounding		3
Charges taken	1	5

2018-19 GAME-BY-GAME

DATE	OPPONENT	MIN	FG	3FG	FT	0-D-R	A	T	B	S	TP
11.11	at Northwestern*	14	1-5	0-1	2-3	0-3-3	2	1	0	1	4
11.15	at Maine*	17	0-1	0-0	0-0	0-2-2	0	1	1	0	0
11.18	Elon*	26	6-7	0-0	0-1	3-1-4	0	1	0	3	12
11.23	vs. Washington*	24	2-4	1-1	0-0	1-4-5	0	1	1	1	5
11.24	vs. Ball State*	26	4-5	0-0	4-4	2-4-6	1	3	0	1	12
11.25	vs. Missouri*	34	1-4	0-1	0-2	0-2-2	2	3	1	0	2
11.28	at Wisconsin*	13	1-2	0-0	1-2	0-3-3	0	4	0	1	3
12.2	Marist*	23	0-1	0-0	1-2	1-1-2	2	1	0	2	1
12.6	UNLV*	18	2-4	0-0	0-2	0-4-4	0	1	0	0	4
12.9	South Carolina										
12.20	at Oregon State										
12.28	East Carolina										
12.30	Florida Gulf Coast										
1.3	at NC State										
1.6	Louisville										
1.10	at Georgia Tech										
1.17	Miami										
1.20	at Florida State										
1.24	Wake Forest										
1.27	Syracuse										
1.31	at Boston College										
2.3	Pittsburgh										
2.7	at North Carolina										
2.10	at Virginia										
2.14	Virginia Tech										
2.21	at Notre Dame										
2.24	at Wake Forest										
2.28	Clemson										
3.3	North Carolina										

* Denotes Started Game; ^ Denotes ACC Tournament; # Denotes NCAA Tournament

SUGGS CAREER STATISTICS

YEAR	GP	GS	MIN	AVG	FG	FGA	PCT	3FG	3FGA	PCT	FT	FTA	PCT	OFF	DEF	REB	AVG	PF	FO	AST	TO	BLK	STL	PTS	AVG
2015-16	29	1	257	8.9	19	56	.339	8	25	.320	12	23	.522	16	30	46	1.6	33	0	8	20	0	9	58	2.0
2016-17	32	0	194	6.1	16	47	.340	2	21	.095	2	4	.500	8	17	25	0.8	16	0	8	8	0	13	36	1.1
2017-18	31	7	351	11.3	22	53	.415	6	18	.333	19	33	.576	20	28	48	1.5	24	0	10	16	1	9	69	2.2
2018-19	9	9	195	21.7	17	33	.515	1	3	.333	8	16	.500	7	24	31	3.4	16	0	7	16	3	9	43	4.8
TOTAL	101	17	997	9.9	74	189	.392	17	67	.254	41	76	.539	51	99	150	1.5	89	0	33	60	4	40	206	2.0



KYRA LAMBERT
 #15 • G • 5-9 • R.JR.
 Cibola, Texas
 Samuel Clemens

#15 KYRA LAMBERT

NOTES:

Recovering from a torn ACL suffered in the 2017 NCAA Tournament
 Will miss the 2018-19 season

2018-19 HONORS:

Team Captain
 Nancy Lieberman Award Watch List

CAREER HIGHS

PTS	17	vs. Grand Canyon (11.17.16)
REB	9	vs. Syracuse (3.3.17)
AST	13	at North Carolina (2.26.17)
FG	6	2x, last vs. GCU (11.17.16)
FGA	12	4x, last at Florida State (1.8.17)
FG%	1.000 (2-2)	vs. Western Carolina (12.29.15)
3FG	3	4x, last at Boston College (1.22.17)
3FGA	7	2x, last vs. Old Dominion (11.22.16)
FT	5	vs. Virginia (3.3.16)
FTA	8	vs. Virginia (3.3.16)
FT%	1.000 (4-4)	2x, last vs. Old Dominion (11.22.16)
BLK	2	vs. Syracuse (2.10.17)
STL	5	3x, last vs. Louisville (1.2.17)
MIN	40	vs. Texas A&M (11.18.15)

SEASON HIGHS

PTS	
REB	
AST	
FG	
FGA	
FG%	
3FG	
3FGA	
FT	
FTA	
FT%	
BLK	
STL	
MIN	

MISC.	SEASON	CAREER
10+ PTS		17
20+ PTS		0
5+ REB		17
10+ REB		0
3+ AST		35
3+ STL		11
20+ MIN		62
Double-Double		1
Triple-Double		0
Led Duke in scoring		2
Led Duke in rebounding		4
Charges taken		9

2018-19 GAME-BY-GAME

DATE	OPPONENT	MIN	FG	3FG	FT	O-D-R	A	T	B	S	TP
11.11	at Northwestern	-	-	-	-	-	-	-	-	-	-
11.15	at Maine	-	-	-	-	-	-	-	-	-	-
11.18	Elon	-	-	-	-	-	-	-	-	-	-
11.23	vs. Washington	-	-	-	-	-	-	-	-	-	-
11.24	vs. Ball State	-	-	-	-	-	-	-	-	-	-
11.25	vs. Missouri	-	-	-	-	-	-	-	-	-	-
11.28	at Wisconsin	-	-	-	-	-	-	-	-	-	-
12.2	Marist	-	-	-	-	-	-	-	-	-	-
12.6	UNLV	-	-	-	-	-	-	-	-	-	-
12.9	South Carolina	-	-	-	-	-	-	-	-	-	-
12.20	at Oregon State	-	-	-	-	-	-	-	-	-	-
12.28	East Carolina	-	-	-	-	-	-	-	-	-	-
12.30	Florida Gulf Coast	-	-	-	-	-	-	-	-	-	-
1.3	at NC State	-	-	-	-	-	-	-	-	-	-
1.6	Louisville	-	-	-	-	-	-	-	-	-	-
1.10	at Georgia Tech	-	-	-	-	-	-	-	-	-	-
1.17	Miami	-	-	-	-	-	-	-	-	-	-
1.20	at Florida State	-	-	-	-	-	-	-	-	-	-
1.24	Wake Forest	-	-	-	-	-	-	-	-	-	-
1.27	Syracuse	-	-	-	-	-	-	-	-	-	-
1.31	at Boston College	-	-	-	-	-	-	-	-	-	-
2.3	Pittsburgh	-	-	-	-	-	-	-	-	-	-
2.7	at North Carolina	-	-	-	-	-	-	-	-	-	-
2.10	at Virginia	-	-	-	-	-	-	-	-	-	-
2.14	Virginia Tech	-	-	-	-	-	-	-	-	-	-
2.21	at Notre Dame	-	-	-	-	-	-	-	-	-	-
2.24	at Wake Forest	-	-	-	-	-	-	-	-	-	-
2.28	Clemson	-	-	-	-	-	-	-	-	-	-
3.3	North Carolina	-	-	-	-	-	-	-	-	-	-

* Denotes Started Game; ^ Denotes ACC Tournament; # Denotes NCAA Tournament

LAMBERT CAREER STATISTICS

YEAR	GP	GS	MIN	AVG	FG	FGA	PCT	3FG	3FGA	PCT	FT	FTA	PCT	OFF	DEF	REB	AVG	PF	FO	AST	TO	BLK	STL	PTS	AVG
2015-16	32	23	874	27.3	70	184	.380	18	56	.321	40	61	.656	13	75	88	2.8	79	1	79	62	5	36	198	6.2
2016-17	33	33	992	30.1	98	225	.436	23	58	.397	39	53	.736	29	93	122	3.7	44	1	116	58	5	56	258	7.8
2017-18	-	-	-	-	-	-	-	-	-	-	-	-	-	-	-	-	-	-	-	-	-	-	-	-	-
2018-19	-	-	-	-	-	-	-	-	-	-	-	-	-	-	-	-	-	-	-	-	-	-	-	-	-
TOTAL	65	56	1866	28.7	168	409	.411	41	114	.360	79	114	.693	42	168	210	3.2	123	2	195	120	10	92	456	7.0



RAYAH CRAIG
 #23 • G • 5-10 • FR.
 Scottsdale, Ariz.
 Desert Mountain

#23 RAYAH CRAIG

NOTES: Tallied 13 points in her first collegiate game at Northwestern (11.11.18)

2018-19 Honors:

SEASON/CAREER HIGHS

PTS	13	at Northwestern (11.11.18)
REB	2	3x, last vs. Marist (12.2.18)
AST	1	2x, last vs. Elon (11.18.18)
FG	5	at Northwestern (11.11.18)
FGA	8	at Northwestern (11.11.18)
FG%	.625 (5-8)	at Northwestern (11.11.18)
3FG	2	vs. Elon (11.18.18)
3FGA	4	vs. Elon (11.18.18)
FT	2	at Northwestern (11.11.18)
FTA	2	at Northwestern (11.11.18)
FT%	1.000 (2-2)	at Northwestern (11.11.18)
BLK	1	vs. Ball State (11.24.18)
STL	2	vs. Missouri (11.25.18)
MIN	20	at Northwestern (11.11.18)

MISC. SEASON/CAREER

10+ PTS	1
20+ PTS	
5+ REB	
10+ REB	
3+ AST	
3+ STL	
20+ MIN	1
Double-Double	
Triple-Double	
Led Duke in scoring	
Led Duke in rebounding	
Charges taken	

2018-19 GAME-BY-GAME

DATE	OPPONENT	MIN	FG	3FG	FT	O-D-R	A	T	B	S	TP
11.11	at Northwestern	20	5-8	1-2	2-2	1-1-2	0	2	0	1	13
11.15	at Maine*	13	0-1	0-1	0-0	0-2-2	1	2	0	1	0
11.18	Elon	17	3-5	2-4	0-0	0-1-1	1	1	0	0	8
11.23	vs. Washington	9	0-2	0-1	0-0	0-0-0	1	3	0	0	0
11.24	vs. Ball State	9	1-2	1-1	0-0	0-1-1	1	1	1	0	3
11.25	vs. Missouri	4	0-1	0-1	0-0	0-0-0	0	0	0	2	0
11.28	at Wisconsin	3	0-1	0-0	0-0	1-0-1	0	1	0	0	0
12.2	Marist	7	0-0	0-0	0-0	1-1-2	1	0	0	1	0
12.6	UNLV	7	0-1	0-0	1-2	1-1-2	0	1	0	0	1
12.9	South Carolina										
12.20	at Oregon State										
12.28	East Carolina										
12.30	Florida Gulf Coast										
1.3	at NC State										
1.6	Louisville										
1.10	at Georgia Tech										
1.17	Miami										
1.20	at Florida State										
1.24	Wake Forest										
1.27	Syracuse										
1.31	at Boston College										
2.3	Pittsburgh										
2.7	at North Carolina										
2.10	at Virginia										
2.14	Virginia Tech										
2.21	at Notre Dame										
2.24	at Wake Forest										
2.28	Clemson										
3.3	North Carolina										

* Denotes Started Game; ^ Denotes ACC Tournament; # Denotes NCAA Tournament

CRAIG CAREER STATISTICS

YEAR	GP	GS	MIN	AVG	FG	FGA	PCT	3FG	3FGA	PCT	FT	FTA	PCT	OFF	DEF	REB	AVG	PF	FO	AST	TO	BLK	STL	PTS	AVG
2018-19	9	1	89	9.9	9	21	.429	4	10	.400	3	4	.750	4	7	11	1.2	12	1	5	11	1	5	25	2.8
TOTAL	9	1	89	9.9	9	21	.429	4	10	.400	3	4	.750	4	7	11	1.2	12	1	5	11	1	5	25	2.8



#24 ONOME AKINBODE-JAMES

NOTES: Tallied a season-high seven points and tied a career high with six rebounds vs. Ball State ... Pulled down a career-high 11 rebounds, while scoring five points in season-high 26 minutes against Missouri ... Registered a career-high 14 points and 14 rebounds at Wisconsin (11.28.18)

2018-19 Honors:

ONOME AKINBODE-JAMES
 #24 • F/C • 6-3 • FR.
 Blairstown, N.J.
 Blair Academy

SEASON/CAREER HIGHS

PTS	14	at Wisconsin (11.28.18)
REB	14	at Wisconsin (11.28.18)
AST	2	at Northwestern (11.11.18)
FG	6	at Wisconsin (11.28.18)
FGA	12	at Wisconsin (11.28.18)
FG%	.500(6-12)	at Wisconsin (11.28.18)
3FG		
3FGA		
FT	3	at Northwestern (11.11.18)
FTA	4	at Northwestern (11.11.18)
FT%	1.000 (2-2)	at Wisconsin (11.28.18)
BLK	4	vs. Elon (11.18.18)
STL	3	vs. Elon (11.18.18)
MIN	30	at Wisconsin (11.28.18)

MISC.	SEASON/CAREER
10+ PTS	1
20+ PTS	
5+ REB	5
10+ REB	2
3+ AST	
3+ STL	1
20+ MIN	5
Double-Double	1
Triple-Double	
Led Duke in scoring	1
Led Duke in rebounding	3
Charges taken	

2018-19 GAME-BY-GAME

DATE	OPPONENT	MIN	FG	3FG	FT	O-D-R	A	T	B	S	TP
11.11	at Northwestern*	16	1-4	0-0	3-4	2-0-2	2	2	0	1	5
11.15	at Maine*	19	1-2	0-0	0-0	0-3-3	1	1	0	0	2
11.18	Elon	24	2-4	0-0	0-2	3-3-6	0	2	4	3	4
11.23	vs. Washington	15	0-0	0-0	0-0	1-2-3	0	3	0	2	0
11.24	vs. Ball State*	21	3-5	0-0	1-3	3-3-6	1	6	1	2	7
11.25	vs. Missouri*	26	2-5	0-0	1-2	4-7-11	0	4	0	0	5
11.28	at Wisconsin*	30	6-12	0-0	2-2	4-10-14	0	1	0	2	14
12.2	Marist*	12	1-2	0-0	1-1	2-2-4	1	0	0	0	3
12.6	UNLV*	27	1-6	0-0	1-2	3-4-7	1	2	1	0	3
12.9	South Carolina										
12.20	at Oregon State										
12.28	East Carolina										
12.30	Florida Gulf Coast										
1.3	at NC State										
1.6	Louisville										
1.10	at Georgia Tech										
1.17	Miami										
1.20	at Florida State										
1.24	Wake Forest										
1.27	Syracuse										
1.31	at Boston College										
2.3	Pittsburgh										
2.7	at North Carolina										
2.10	at Virginia										
2.14	Virginia Tech										
2.21	at Notre Dame										
2.24	at Wake Forest										
2.28	Clemson										
3.3	North Carolina										

* Denotes Started Game; ^ Denotes ACC Tournament; # Denotes NCAA Tournament

AKINBODE-JAMES CAREER STATISTICS

YEAR	GP	GS	MIN	AVG	FG	FGA	PCT	3FG	3FGA	PCT	FT	FTA	PCT	OFF	DEF	REB	AVG	PF	FO	AST	TO	BLK	STL	PTS	AVG
2018-19	9	7	189	21.0	17	40	.425	0	0	.000	9	16	.563	22	34	56	6.2	25	0	6	21	6	10	43	4.8
TOTAL	9	7	189	21.0	17	40	.425	0	0	.000	9	16	.563	22	34	56	6.2	25	0	6	21	6	10	43	4.8



JADE WILLIAMS
 #25 • F/C • 6-5 • SO.
 The Colony, Texas
 The Colony

#25 JADE WILLIAMS

NOTES: Came off the bench at Maine (11.15.18) and tallied 11 points ... had a career-high eight boards against Elon (11.18.18) ... Matched career-highs of rebounds (8) and minutes (34) against Marist (12.2.18)

2018-19 HONORS:
 Lisa Leslie Award Watch List

CAREER HIGHS

PTS	16	vs. Georgia Tech (2.1.18)
REB	8	3x, last vs. Marist (12.2.18)
AST	3	vs. Florida State (2.19.18)
FG	7	vs. Georgia Tech (2.1.18)
FGA	9	2x, last vs. Marist (12.2.18)
FG%	1.000 (3-3)2x, last at North Carolina (1.21.18)	
3FG		
3FGA	1	vs. NC State (1.7.18)
FT	3	at Virginia Tech (1.18.18)
FTA	6	2x, last at Maine (11.15.18)
FT%	1.000 (2-2)	2x, last vs. Elon (11.18.18)
BLK	6	vs. Georgia Tech (2.1.18)
STL	3	vs. Washington (11.23.18)
MIN	34	2x, last vs. Marist (12.2.18)

SEASON HIGHS

PTS	11	2x, last vs. Marist (12.2.18)
REB	8	2x, last vs. Marist (12.2.18)
AST	2	vs. Ball State (11.24.18)
FG	5	2x, last vs. Marist (12.2.18)
FGA	9	vs. Marist (12.2.18)
FG%	.714 (5-7)	at Maine (11.15.18)
3FG		
3FGA		
FT	2	at Northwestern (11.11.18)
FTA	6	at Maine (11.15.18)
FT%	1.000 (2-2)	2x, last vs. Elon (11.18.18)
BLK	2	vs. Ball State (11.24.18)
STL	3	vs. Washington (11.23.18)
MIN	34	2x, last vs. Marist (12.2.18)

MISC.	SEASON	CAREER
10+ PTS	2	3
20+ PTS		
5+ REB	6	7
10+ REB		
3+ AST		1
3+ STL	1	1
20+ MIN	6	14
Double-Double		
Triple-Double		
Led Duke in scoring		
Led Duke in rebounding	1	2
Charges taken		

2018-19 GAME-BY-GAME

DATE	OPPONENT	MIN	FG	3FG	FT	O-D-R	A	T	B	S	TP
11.11	at Northwestern*	33	2-7	0-0	2-2	3-1-4	0	0	0	0	6
11.15	at Maine	34	5-7	0-0	1-6	3-3-6	1	1	0	1	11
11.18	Elon*	16	3-8	0-0	2-2	5-3-8	1	2	1	0	8
11.23	vs. Washington*	26	3-7	0-0	0-0	5-0-5	0	0	0	3	6
11.24	Ball State	22	4-6	0-0	1-1	2-1-3	2	3	2	1	9
11.25	Missouri	8	0-2	0-0	1-2	0-0-0	0	1	0	0	1
11.28	at Wisconsin	24	1-3	0-0	0-0	3-2-5	1	1	0	1	2
12.2	Marist	34	5-9	0-0	1-4	2-6-8	0	5	1	0	11
12.6	UNLV	18	2-5	0-0	0-0	2-4-6	1	1	2	0	4
12.9	South Carolina										
12.20	at Oregon State										
12.28	East Carolina										
12.30	Florida Gulf Coast										
1.3	at NC State										
1.6	Louisville										
1.10	at Georgia Tech										
1.17	Miami										
1.20	at Florida State										
1.24	Wake Forest										
1.27	Syracuse										
1.31	at Boston College										
2.3	Pittsburgh										
2.7	at North Carolina										
2.10	at Virginia										
2.14	Virginia Tech										
2.21	at Notre Dame										
2.24	at Wake Forest										
2.28	Clemson										
3.3	North Carolina										

* Denotes Started Game; ^ Denotes ACC Tournament; # Denotes NCAA Tournament

WILLIAMS CAREER STATISTICS

YEAR	GP	GS	MIN	AVG	FG	FGA	PCT	3FG	3FGA	PCT	FT	FTA	PCT	OFF	DEF	REB	AVG	PF	FO	AST	TO	BLK	STL	PTS	AVG
2017-18	33	8	487	14.8	58	111	.523	0	1	.000	15	40	.375	42	58	100	3.0	66	1	20	47	40	13	131	4.0
2018-19	9	3	215	23.9	25	54	.463	0	0	.000	8	17	.471	25	20	45	5.0	29	2	6	14	6	6	58	6.4
TOTAL	42	11	702	16.7	83	165	.503	0	1	.000	23	57	.404	67	78	145	3.5	95	3	26	61	46	19	189	4.5



#30 EMILY SCHUBERT

NOTES:

2018-19 HONORS:

EMILY SCHUBERT
 #30 • C • 6-4 • RSO.
 Elizabethton, Tenn.
 Elizabethton

CAREER HIGHS

PTS		
REB		
AST	1	vs. UNCG (12.7.17)
FG		
FGA	1	vs. Boston College (1.25.18)
FG%		
3FG		
3FGA		
FT		
FTA		
FT%		
BLK	1	2x, last vs. Presbyterian (11.26.17)
STL		
MIN	4	vs. Boston College (1.25.18)

SEASON HIGHS

PTS		
REB		
AST		
FG		
FGA		
FG%		
3FG		
3FGA		
FT		
FTA		
FT%		
BLK		
STL		
MIN	3	vs. UNLV (12.6.18)

MISC.	SEASON	CAREER
10+ PTS		
20+ PTS		
5+ REB		
10+ REB		
3+ AST		
3+ STL		
20+ MIN		
Double-Double		
Triple-Double		
Led Duke in scoring		
Led Duke in rebounding		
Charges taken		

2018-19 GAME-BY-GAME

DATE	OPPONENT	MIN	FG	3FG	FT	O-D-R	A	T	B	S	TP
11.11	at Northwestern	-	-	-	-	-	-	-	-	-	-
11.15	at Maine	-	-	-	-	-	-	-	-	-	-
11.18	Elon	-	-	-	-	-	-	-	-	-	-
11.23	vs. Washington	-	-	-	-	-	-	-	-	-	-
11.24	vs. Ball State	-	-	-	-	-	-	-	-	-	-
11.25	vs. Missouri	-	-	-	-	-	-	-	-	-	-
11.28	at Wisconsin	-	-	-	-	-	-	-	-	-	-
12.2	Marist	-	-	-	-	-	-	-	-	-	-
12.6	UNLV	3	0-0	0-0	0-0	0-0-0	0	0	0	0	0
12.9	South Carolina										
12.20	at Oregon State										
12.28	East Carolina										
12.30	Florida Gulf Coast										
1.3	at NC State										
1.6	Louisville										
1.10	at Georgia Tech										
1.17	Miami										
1.20	at Florida State										
1.24	Wake Forest										
1.27	Syracuse										
1.31	at Boston College										
2.3	Pittsburgh										
2.7	at North Carolina										
2.10	at Virginia										
2.14	Virginia Tech										
2.21	at Notre Dame										
2.24	at Wake Forest										
2.28	Clemson										
3.3	North Carolina										

* Denotes Started Game; ^ Denotes ACC Tournament; # Denotes NCAA Tournament

SCHUBERT CAREER STATISTICS

YEAR	GP	GS	MIN	AVG	FG	FGA	PCT	3FG	3FGA	PCT	FT	FTA	PCT	OFF	DEF	REB	AVG	PF	FO	AST	TO	BLK	STL	PTS	AVG
2016-17	0	0	0	0.0	0	0	.000	0	0	.000	0	0	.000	0	0	0	0.0	0	0	0	0	0	0	0	0.0
2017-18	6	0	12	2.0	0	1	.000	0	0	.000	0	0	.000	0	0	0	0.0	2	0	1	0	2	0	0	0.0
2018-19	1	0	3	3.0	0	0	.000	0	0	.000	0	0	.000	0	0	0	0.0	0	0	0	0	0	0	0	0.0
TOTAL	7	0	15	2.1	0	1	.000	0	0	.000	0	0	.000	0	0	0	0.0	2	0	1	0	2	0	0	0.0



#32 JAYDA ADAMS

NOTES: Notched a season-high five points at Wisconsin (11.28.18)

2018-19 HONORS:

JAYDA ADAMS
 #32 • G • 6-0 • SO.
 Irvine, Calif.
 Mater Dei

CAREER HIGHS

PTS	8	vs. Maine (12.19.17)
REB	3	vs. Ball State (11.24.18)
AST	4	vs. Elon (11.18.18)
FG	3	vs. Maine (12.19.17)
FGA	6	2x, last vs. Connecticut (3.24.18)
FG%	1.000 (1-1)	2x, last vs. Marist (12.2.18)
3FG	2	vs. Maine (12.19.17)
3FGA	4	2x, last at Wake Forest (1.11.18)
FT	1	3x, last vs. UNLV (12.6.18)
FTA	2	4x, last vs. UNLV (12.6.18)
FT%	1.000 (2-2)	at Maine (11.15.18)
BLK	2	at Wisconsin (11.28.18)
STL	2	vs. UNLV (12.6.18)
MIN	31	at Louisville (1.4.18)

SEASON HIGHS

PTS	6	vs. UNLV (12.6.18)
REB	3	vs. Ball State (11.24.18)
AST	4	vs. Elon (11.18.18)
FG	2	2x, last vs. UNLV (12.6.18)
FGA	5	vs. UNLV (12.6.18)
FG%	1.000 (1-1)	vs. Marist (12.2.18)
3FG	1	4x, last vs. UNLV (12.6.18)
3FGA	3	2x, last at Wisconsin (11.28.18)
FT	2	at Maine (11.15.18)
FTA	2	2x, last vs. Ball State (11.24.18)
FT%	1.000 (2-2)	at Maine (11.15.18)
BLK	2	at Wisconsin (11.28.18)
STL	2	vs. UNLV (12.6.18)
MIN	19	at Wisconsin (11.28.18)

MISC.	SEASON	CAREER
10+ PTS		
20+ PTS		
5+ REB		
10+ REB		
3+ AST	1	2
3+ STL		
20+ MIN		7
Double-Double		
Triple-Double		
Led Duke in scoring		
Led Duke in rebounding		
Charges taken		

2018-19 GAME-BY-GAME

DATE	OPPONENT	MIN	FG	3FG	FT	O-D-R	A	T	B	S	TP
11.11	at Northwestern	7	0-0	0-0	0-0	0-0-0	0	0	0	1	0
11.15	at Maine	12	0-2	0-1	2-2	0-0-0	1	1	0	1	2
11.18	Elon	17	1-3	1-2	0-0	0-1-1	4	1	0	0	3
11.23	vs. Washington	17	1-1	0-0	0-0	0-0-0	0	1	0	0	2
11.24	vs. Ball State	14	1-4	1-3	0-2	2-1-3	2	0	0	1	3
11.25	vs. Missouri	10	0-0	0-0	0-0	0-0-0	0	0	0	0	0
11.28	at Wisconsin	19	2-4	1-3	0-0	0-0-0	1	0	2	1	5
12.2	Marist	11	1-1	1-1	0-0	0-0-0	1	0	0	0	3
12.6	UNLV	16	2-5	1-1	1-2	0-2-2	2	1	0	2	6
12.9	South Carolina										
12.20	at Oregon State										
12.28	East Carolina										
12.30	Florida Gulf Coast										
1.3	at NC State										
1.6	Louisville										
1.10	at Georgia Tech										
1.17	Miami										
1.20	at Florida State										
1.24	Wake Forest										
1.27	Syracuse										
1.31	at Boston College										
2.3	Pittsburgh										
2.7	at North Carolina										
2.10	at Virginia										
2.14	Virginia Tech										
2.21	at Notre Dame										
2.24	at Wake Forest										
2.28	Clemson										
3.3	North Carolina										

* Denotes Started Game; ^ Denotes ACC Tournament; # Denotes NCAA Tournament

ADAMS CAREER STATISTICS

YEAR	GP	GS	MIN	AVG	FG	FGA	PCT	3FG	3FGA	PCT	FT	FTA	PCT	OFF	DEF	REB	AVG	PF	FO	AST	TO	BLK	STL	PTS	AVG
2017-18	33	0	431	13.1	21	69	.304	11	41	.268	6	12	.500	6	23	29	0.9	25	0	23	34	1	6	59	1.8
2018-19	9	0	123	13.7	8	20	.400	5	11	.455	3	6	.500	2	4	6	0.7	7	0	11	4	2	6	24	2.7
TOTAL	42	0	554	13.2	29	89	.326	16	52	.308	9	18	.500	8	27	35	0.8	32	0	34	38	3	12	83	2.0



MADISON TREECE
 #44 • F • 6-4 • SO.
 St. Peters, Mo.
 Rock Bridge

#44 MADISON TREECE

NOTES: Tallied four offensive boards against Elon (11.18.18)

2018-19 HONORS:

CAREER HIGHS

PTS	5	2x, last vs. Winthrop (12.10.17)
REB	5	vs. Maine (12.19.17)
AST	3	vs. Winthrop (12.10.17)
FG	2	vs. Presbyterian (11.26.17)
FGA	3	vs. Presbyterian (11.26.17)
FG%	1.000 (2-2)	vs. Winthrop (12.10.17)
3FG		
3FGA	1	vs. Elon (11.18.18)
FT	2	at Old Dominion (11.22.17)
FTA	4	at Old Dominion (11.22.17)
FT%	1.000 (1-1)	vs. Presbyterian (11.26.17)
BLK	1	at Old Dominion (11.22.17)
STL	1	vs. Winthrop (12.10.17)
MIN	18	vs. Presbyterian (11.26.17)

SEASON HIGHS

PTS	1	vs. Elon (11.18.18)
REB	4	vs. Elon (11.18.18)
AST	1	at Northwestern (11.11.18)
FG		
FGA		
FG%		
3FG		
3FGA		
FT	1	vs. Elon (11.18.18)
FTA	2	vs. Elon (11.18.18)
FT%	.500 (1-2)	vs. Elon (11.18.18)
BLK		
STL		
MIN	6	2x, last vs. UNLV (12.6.18)

MISC.

	SEASON	CAREER
10+ PTS		
20+ PTS		
5+ REB		1
10+ REB		
3+ AST		1
3+ STL		
20+ MIN		
Double-Double		
Triple-Double		
Led Duke in scoring		
Led Duke in rebounding		
Charges taken		

2018-19 GAME-BY-GAME

DATE	OPPONENT	MIN	FG	3FG	FT	O-D-R	A	T	B	S	TP
11.11	at Northwestern	4	0-0	0-0	0-0	0-0-0	1	0	0	0	0
11.15	at Maine	-	-	-	-	-	-	-	-	-	-
11.18	Elon	6	0-1	0-1	1-2	4-0-4	0	2	0	0	1
11.23	vs. Washington	-	-	-	-	-	-	-	-	-	-
11.24	vs. Ball State	-	-	-	-	-	-	-	-	-	-
11.25	vs. Missouri	-	-	-	-	-	-	-	-	-	-
11.28	at Wisconsin	1	0-0	0-0	0-0	0-0-0	0	0	0	0	0
12.2	Marist	-	-	-	-	-	-	-	-	-	-
12.6	UNLV	6	0-0	0-0	0-0	0-0-0	0	1	0	0	0
12.9	South Carolina										
12.20	at Oregon State										
12.28	East Carolina										
12.30	Florida Gulf Coast										
1.3	at NC State										
1.6	Louisville										
1.10	at Georgia Tech										
1.17	Miami										
1.20	at Florida State										
1.24	Wake Forest										
1.27	Syracuse										
1.31	at Boston College										
2.3	Pittsburgh										
2.7	at North Carolina										
2.10	at Virginia										
2.14	Virginia Tech										
2.21	at Notre Dame										
2.24	at Wake Forest										
2.28	Clemson										
3.3	North Carolina										

* Denotes Started Game; ^ Denotes ACC Tournament; # Denotes NCAA Tournament

TREECE CAREER STATISTICS

YEAR	GP	GS	MIN	AVG	FG	FGA	PCT	3FG	3FGA	PCT	FT	FTA	PCT	OFF	DEF	REB	AVG	PF	FO	AST	TO	BLK	STL	PTS	AVG
2017-18	17	0	93	5.5	5	21	.238	0	3	.000	7	13	.538	6	10	16	0.9	7	0	5	3	1	2	17	1.0
2018-19	4	0	17	4.3	0	1	.000	0	1	.000	1	2	.500	4	0	4	1.0	4	0	1	3	0	0	1	0.3
TOTAL	21	0	110	5.2	5	22	.227	0	4	.000	8	15	.533	10	10	20	1.0	11	0	6	6	1	2	18	0.9