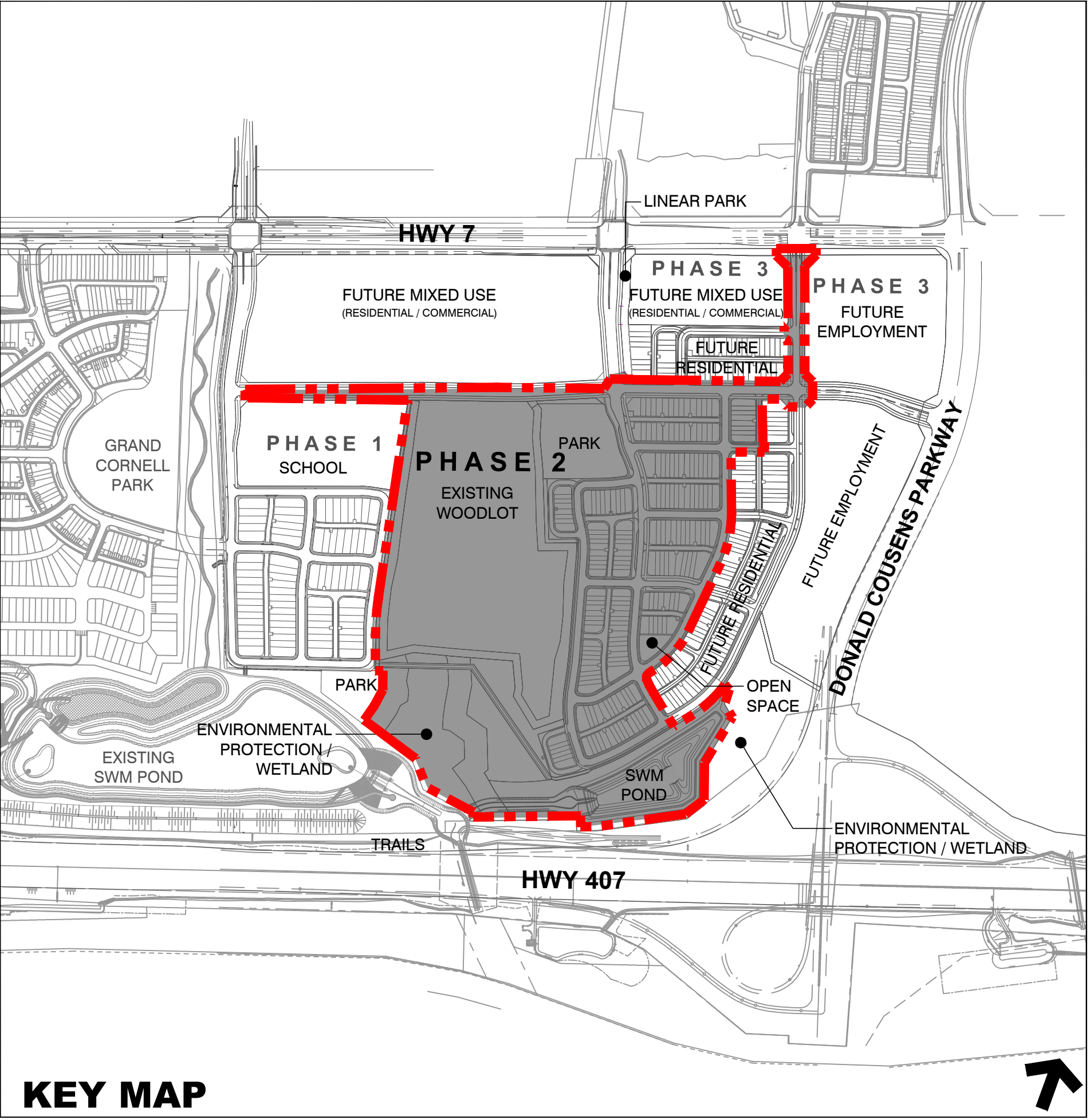
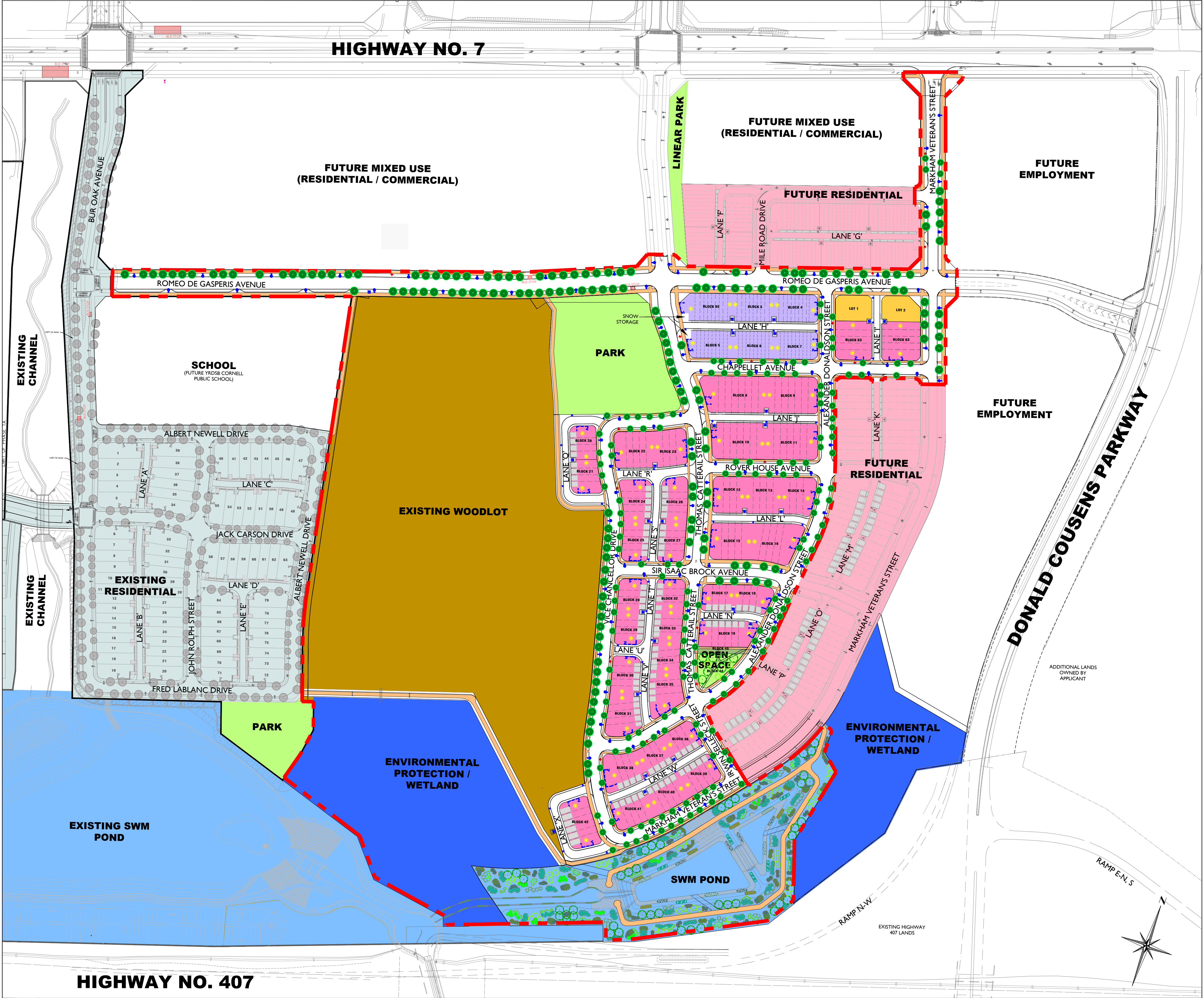


COMMUNITY INFORMATION MAP

LINDWIDE SUBDIVISION / Phase 2 (5B)

Lindwide Developments
(Cornell) Limited
City of Markham, Ontario
SOUTH C▼RNELL



KEY MAP

LEGEND	
	Heritage Property
	Existing Residential
	Future Residential
	Residential Townhouses
	Residential Stacked Townhouses
	Park / Open Space
	Storm Water Management Pond
	Environmental Protection / Wetland
	Existing Woodlot
	Sidewalk / Multiuse Pathway
	Boundary of Phase Two
	1.8m High Wood Privacy Fence & Gate
	Berm
	Street Trees
	Light Standard
	Hydro Transformer
	Fire Hydrant
	Bus Stop
	Rain Barrel

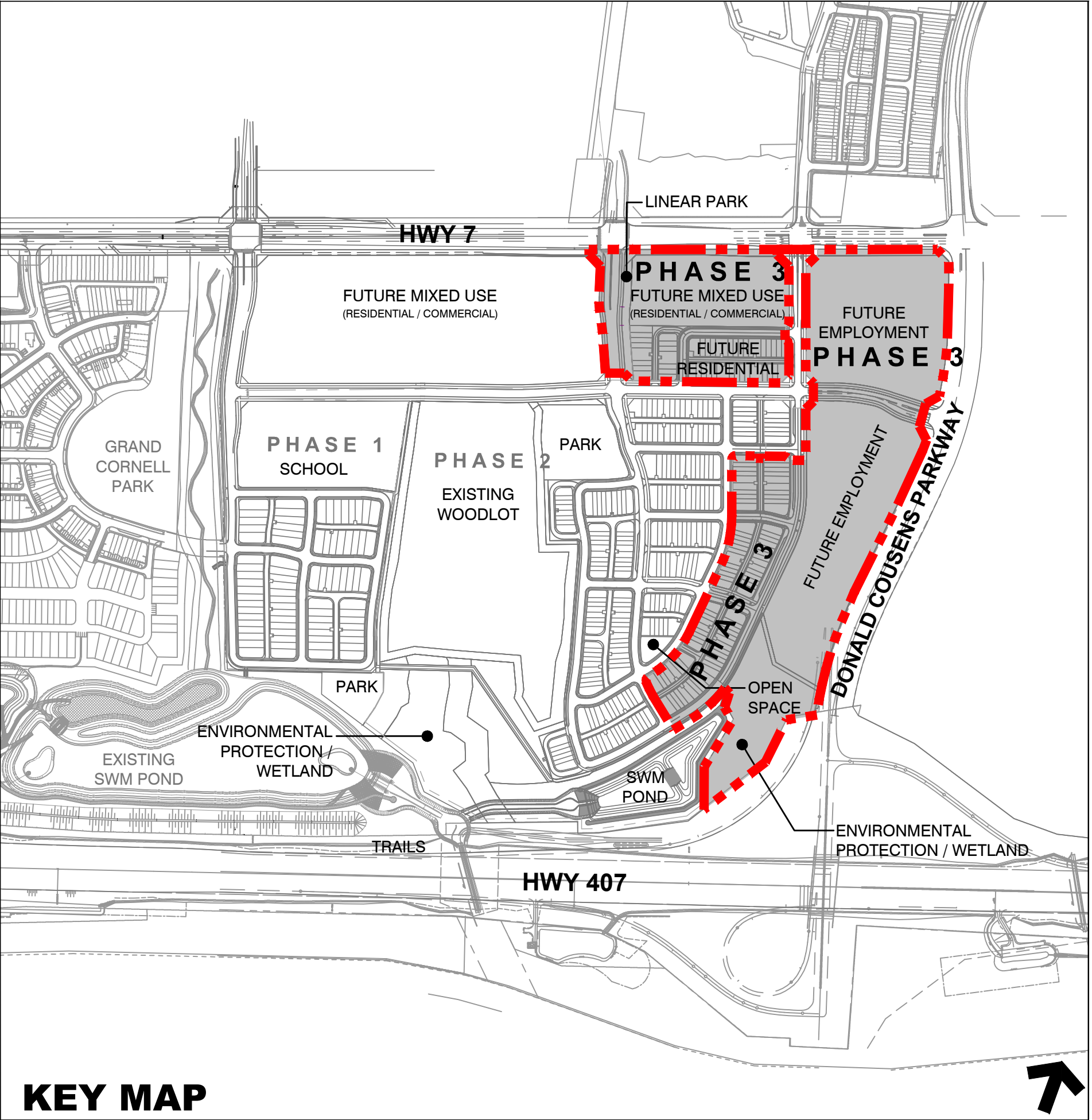
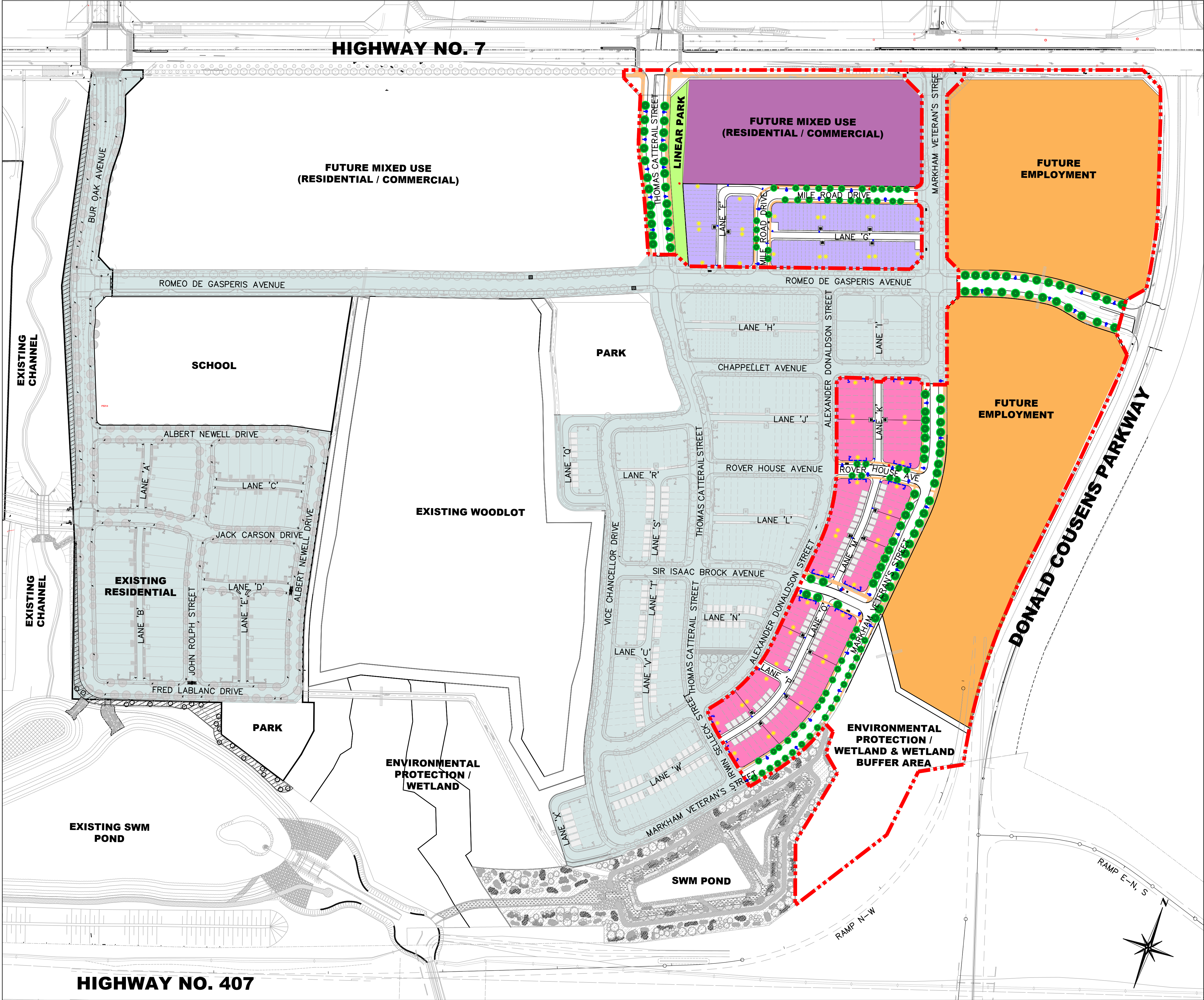
- COMMUNITY INFORMATION SOURCES:
1. THIS MAP IS INTENDED TO PROVIDE HOME BUYERS WITH GENERAL INFORMATION ABOUT THE SUBDIVISION AND THE SURROUNDING AREA. THE FOLLOWING IS A LIST OF POTENTIAL CONCERNS THAT HOME BUYERS MAY HAVE AND THE TELEPHONE NUMBERS AT THE CITY OF MARKHAM IF YOU NEED MORE INFORMATION. FOR THE BEST SERVICE, YOU ARE ENCOURAGED TO CALL DURING NORMAL BUSINESS.
 2. PLEASE NOTE: THIS MAP IS BASED ON INFORMATION AVAILABLE AS OF MAY 2024.
 3. For the following concerns, please contact the City of Markham's Planning and Development Services Dept. at 905.475.4861 or website at www.markham.ca/wps/portal/home/business/planning:
 - Some streets in this subdivision will be extended in the future and temporary access roads will be closed.
 - Contact the Planning Services Department for further information on proposed and existing land use.
 - While a public school site has been reserved within the approved draft plan for the subdivision, it may not be constructed and used as a public school site. Existing regional school(s) will be diverted to in accommodation for all public board elementary pupils until such time as any new elementary school can be constructed within the draft plan. If a new elementary school is not constructed within the approved draft plan, then all South Cornell pupils will be accommodated at an existing public board elementary site.
 - Boulevard trees will be planted according to City requirements and a tree will not necessarily be located in front of every home. Final street tree quantities and locations are subject to on-site stake out by the Landscape Architect and the City's approval.
 - Despite the Developer's agreement to furnish street trees, site conditions may prevent the planting of a street tree within the public right-of-way in front of a particular lot.
 - The ultimate design of fences to be provided by the builder is to be determined at the detailed landscaping approval stage and must comply with all City By-laws.
 - You are advised to check your agreement of purchase and sale for warning clauses and special conditions or requirements that may affect your lot.
 - Community uses are intended for Park/Open Space Blocks: 33, 43, 44, and 80. Park uses may result in increased traffic on the streets adjacent to, or in the vicinity of, these properties. Properties adjacent to such blocks may be affected by noise and lighting due to park functions.
 4. For the following concerns, please contact the City of Markham's Engineering Dept. at 905.475.4861.
 - There may be storm water catch basins or utility easements located on some lots in this subdivision.
 - Some lots and development blocks will be affected by noise from adjacent roads and warning clauses will apply to purchasers.
 - Woodlots, environmental protection lands, and storm water management ponds in this neighborhood will be left in a natural condition with minimal maintenance and no grass cutting. These blocks may contain pedestrian viewing areas and nearby pathways.
 - Some streets will have sidewalks on both sides while others will have them on only one side, and some streets may have none.
 - The City of Markham's Zoning By-law regulates the width of driveways. Please contact the City of Markham prior to any modifications.
 - The City reserves the right to introduce transit services and facilities such as bus stops, shelters, pads, benches and other associated amenities on any City right-of-way as determined by Regional Transit to provide effective service coverage.
 - Encroachments of any kind are not permitted within the Woodlot, Channels, Wetland, or Stormwater Management Pond.
 - There may be rain barrels located on some lots in this subdivision. These rain barrels form an integral part of the stormwater management infrastructure for the community, and it is the owner's responsibility to maintain this system and ensure proper drainage is maintained.
 5. For the following concern, please call Canada Post at 1-800-267-1177.
 - Community mailboxes will be located within the subdivision.

COMMUNITY INFORMATION MAP

LINDWIDE SUBDIVISION / Phase 3

Lindwide Developments
(Cornell) Limited
City of Markham, Ontario

SOUTH C▼RNELL



LEGEND

- Existing Residential
- Residential Townhouses
- Residential Stacked Townhouses
- Future Employment
- Residential High Density
- Sidewalk / Multiuse Pathway
- Boundary of Phase Three
- 1.8m High Wood Privacy Fence & Gate
- Berm
- Street Trees
- Light Standard
- Hydro Transformer
- Fire Hydrant
- Rain Barrel

COMMUNITY INFORMATION SOURCES:

- THIS MAP IS INTENDED TO PROVIDE HOME BUYERS WITH GENERAL INFORMATION ABOUT THE SUBDIVISION AND THE SURROUNDING AREA. THE FOLLOWING IS A LIST OF POTENTIAL CONCERNS THAT HOME BUYERS MAY HAVE AND THE TELEPHONE NUMBERS AT THE CITY OF MARKHAM IF YOU NEED MORE INFORMATION. FOR THE BEST SERVICE, YOU ARE ENCOURAGED TO CALL DURING NORMAL BUSINESS.
- PLEASE NOTE: THIS MAP IS BASED ON INFORMATION AVAILABLE AS OF JUNE 2024.
- For the following concerns, please contact the City of Markham's Planning and Development Services Dept. at 905.475.4861 or website at www.markham.ca/wps/portal/home/business/planning:
 - Some streets in this subdivision will be extended in the future and temporary access roads will be closed.
 - Contact the Planning Services Department for further information on proposed and existing land use.
 - While a public school site has been reserved within the approved draft plan for the subdivision, it may not be constructed and used as a public school site. Existing regional school(s) will be diverted to in accommodation for all public board elementary pupils until such time as any new elementary school can be constructed within the draft plan. If a new elementary school is not constructed within the approved draft plan, then all South Cornell pupils will be accommodated at an existing public board elementary site.
 - Boulevard trees will be planted according to City requirements and a tree will not necessarily be located in front of every home. Final street tree quantities and locations are subject to on-site stake out by the Landscape Architect and the City's approval.
 - Despite the Developer's agreement to furnish street trees, site conditions may prevent the planting of a street tree within the public right-of-way in front of a particular lot.
 - The ultimate design of fences to be provided by the builder is to be determined at the detailed landscaping approval stage and must comply with all City By-laws.
 - You are advised to check your agreement of purchase and sale for warning clauses and special conditions or requirements that may affect your lot.
 - Community uses are intended for Park/Open Space Blocks. Park uses may result in increased traffic on the streets adjacent to, or in the vicinity of, these properties. Properties adjacent to such blocks may be affected by noise and lighting due to park functions.
- For the following concerns, please contact the City of Markham's Engineering Dept. at 905.475.4861.
 - There may be storm water catch basins or utility easements located on some lots in this subdivision.
 - Some lots and development blocks will be affected by noise from adjacent roads and warning clauses will apply to purchasers.
 - Woodlots, environmental protection lands, and storm water management ponds in this neighborhood will be left in a natural condition with minimal maintenance and no grass cutting. These blocks may contain pedestrian viewing areas and nearby pathways.
 - Some streets will have sidewalks on both sides while others will have them on only one side, and some streets may have none.
 - The City of Markham's Zoning By-law regulates the width of driveways. Please contact the City of Markham prior to any modifications.
 - The City reserves the right to introduce transit services and facilities such as bus stops, shelters, pads, benches and other associated amenities on any City right-of-way as determined by Regional Transit to provide effective service coverage.
 - Encroachments of any kind are not permitted within the Woodlot, Channels, Wetland, or Stormwater Management Pond.
 - There may be rain barrels located on some lots in this subdivision. These rain barrels form an integral part of the stormwater management infrastructure for the community, and it is the owner's responsibility to maintain this system and ensure proper drainage is maintained.
- For the following concern, please call Canada Post at 1-800-267-1177.
 - Community mailboxes will be located within the subdivision.