

ACCESSORY SETUP INSTRUCTION

HAND GUARD ASSEMBLY -- PN 9AW#-804700-2000

VALID FOR: All ATVs

BEFORE YOU BEGIN: Read and understand the instructions before starting any work. Make sure that all parts are ready and that you have all the tools required for assembly.

NOTE: CFMOTO shall not be liable for any damage caused by incorrect assembly. CFMOTO recommends that all original accessories be assembled by an authorized CFMOTO dealer.

Before assembly, park the vehicle on a flat surface, put the transmission gear into Park (P) and turn off the key switch.

Zhejiang CFMOTO Power Co., Ltd. All rights reserved. Reproduction of this document, even in part, as well as copying of all kinds, is permitted only with the express written permission of the copyright owner.

MEANING OF SYMBOLS



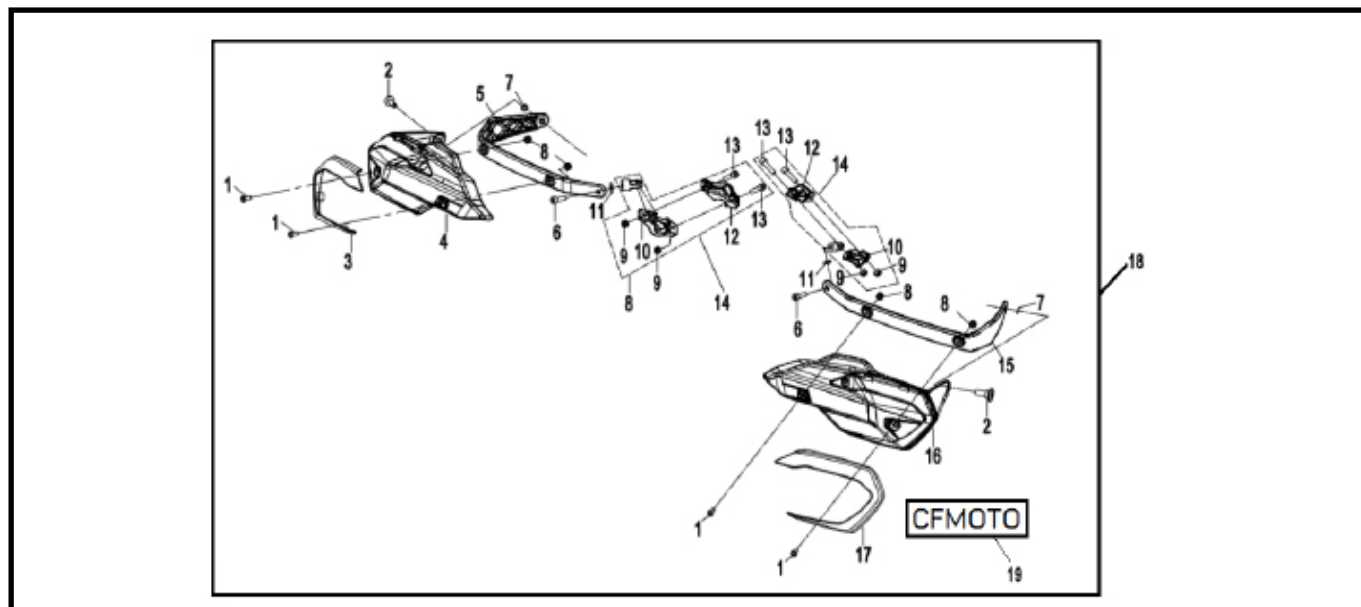
- Indicates information with more details or tips.



- Indicates information of warning or danger.

PARTS LIST:

ITEM	PART NAME	PART NUMBER	QTY.	REMARK
1	BOLT M6×16	A010-120003	4	
2	BOLT, FRONT BRAKE DISC	9010-080003	2	
3	DECO PLATE, RH HAND GUARD	9AWA-101302-0BM00	2	
4	HAND GUARD, RH	9AWA-101301-10000	1	
5	HANDGUARD LEVER, RH	9AWA-101303-10000	1	
6	INNER HEX SCREW	A000-040703	2	
7	WASHER	30305-080112	2	
8	NUT M6	30212-060830	4	
9	NUT	30224-060800	4	
10	PRESS COVER, BRACKET	9CR6-101204-10000	2	
11	WASHER	30305-060112	2	
12	SEAT, BRACKET	9CR6-101202-10000	2	
13	SCREW M6×25	30102-060025700	4	
14	BRACKET ASSY	9AWA-101230-10000	1	
15	HANDGUARD LEVER, LH	9AWA-101203-20000	1	
16	HAND GUARD, LH	9AWA-101201-10000	1	
17	DECO PLATE, LH HAND GUARD	9AWA-101202-0BM00	1	
18	HAND GUARD ASSY	9AW#-804700-2000	1	
19	DECAL, HAND GUARD	9AWA-190405	2	



ACCESSORY SETUP INSTRUCTION

HAND GUARD ASSEMBLY -- PN 9AW#-804700-2000

VALID FOR: All ATVs

BEFORE YOU BEGIN: Read and understand the instructions before starting any work. Make sure that all parts are ready and that you have all the tools required for assembly.

NOTE: CFMOTO shall not be liable for any damage caused by incorrect assembly. CFMOTO recommends that all original accessories be assembled by an authorized CFMOTO dealer.

Before assembly, park the vehicle on a flat surface, put the transmission gear into Park (P) and turn off the key switch.

Zhejiang CFMOTO Power Co., Ltd. All rights reserved. Reproduction of this document, even in part, as well as copying of all kinds, is permitted only with the express written permission of the copyright owner.

MEANING OF SYMBOLS



- Indicates information with more details or tips.



- Indicates information of warning or danger.

TOOL LIST:

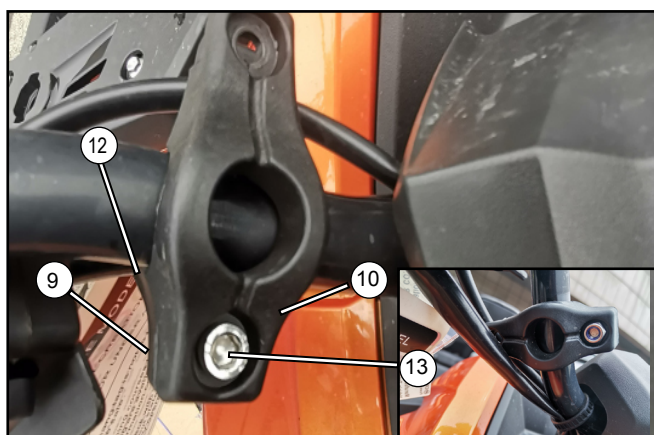
ITEM	DESCRIPTION	QTY.	REMARK
1	4mm ALLEN WRENCH	1	Recommended tools
2	5mm ALLEN WRENCH	1	
3	10mm OPEN END WRENCH	1	
4	PHILLIPS SCREWDRIVER	1	
5	PROTECTIVE GLOVES	1	



// Perform hand guard parts sub-assembly according to the diagram until it represents the completed assemblies as shown.

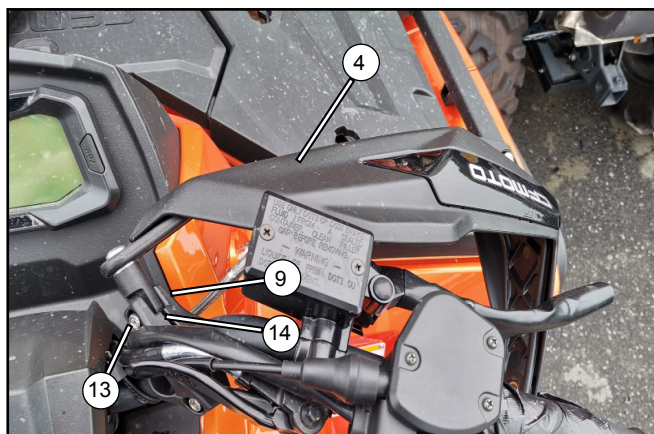


// Paste the decals (19).



// Install bracket seat (12) and bracket press cover (10) onto right side of handlebar with nut (9) and bolt (13).
 // At this step, just use the bolt and nut to fix one end of the bracket assembly.

i » The left side bracket is assembled in the same way.



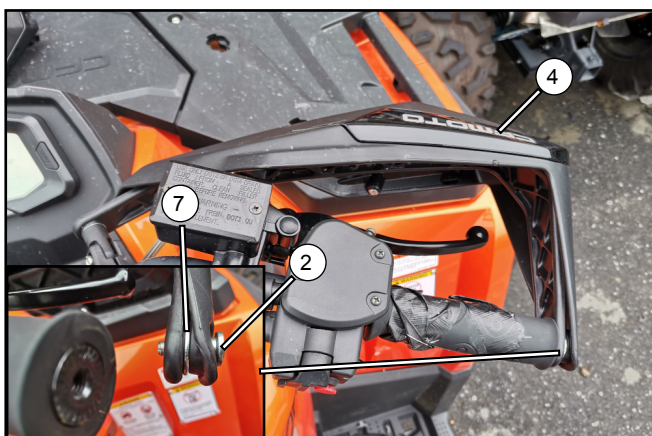
// Position the right hand guard (4) into the bracket assembly (14) as shown, then install the nut (9) and bolt (13), but do not fully tighten it.

i » The left hand guard is assembled in the same way.



// Remove the handle bar end bolts (A).

i » Bolts (A) will be discarded.



// Position the washer (7) in the middle of the end of the hand guard.

// Secure the right hand guard (4) to the right side of the handlebar with the bolt (2).

// Tighten all fasteners securely, using caution not to over-tighten.

i » The left hand guard is assembled in the same way.