

How to ITH Fully Lined

NBX bag

Materials: Medium weight cut away stabilizer.

Tapey Tape

(1-3) lobster claws or d-rings

(2-3) pieces 5/8" grosgrain ribbon 3" long

(2) Pieces 1" grosgrain ribbon 2" long or (2) pieces fabric 1" x 2"

(1) zipper that is about 2" longer than your bag size

Measurements are Height x Width

4x4

Exterior

(1) 2" x 5 1/2"

(1) 4 1/4" x 5 1/2"

(1) 6" x 6"

Lining

(1) 2" x 5 1/2"

(1) 4 1/4" x 5 1/2"

(1) 6" x 6"

Applique

(1) 3 1/2" x 3 1/2"

5x7

fabric for exterior of bag

(1) 2 1/2" x 6"

(1) 6 1/2" x 6"

(1) 8" x 7"

Lining Fabric

(1) 2 1/2" x 6"

(1) 6 1/2" x 6"

(1) 8" x 7"

APPLIQUE

(1) 5" X 5"

6x10

fabric for exterior of bag

(1) 2 1/2" 8"

(1) 7 1/2" x 8"

(1) 10" x 8"

Lining Fabric

(1) 2 1/2" 8"

(1) 7 1/2" x 8"

(1) 10" x 8"

7x11

fabric for exterior of bag

(1) 2 1/2" x 8"

(1) 8 1/2" x 8"

(1) 11 x 9"

Lining Fabric

(1) 2 1/2" x 8"

(1) 8 1/2" x 8"

(1) 11 x 9"

APPLIQUE

(1) 8 X 8"

8x12

fabric for exterior of bag

(1) 2 1/2" X 9

(1) 9 1/2" X 9

(1) 12" x 9 1/2"

Lining Fabric

(1) 2 1/2" x 12"

(1) 8 1/2" x 12"

(1) 9 1/2" X 12"

APPLIQUE

(1) 9"X 9"

SPECIAL NOTES:

Do you have to interface your exterior fabric?

No, but if you prefer a stouter bag then interfacing will give you that.

You can use Vinyl for the exterior of the bag, if you do make sure you cut the front of the bag pieces 1/2" SHORTER than the measurements given

IE: on the 5x7 bag instead of 2 1/2" x 8 and 6 x 8" cut them 2" x 8"

and 5 1/2" x 8"

NOT ALL PICTURES IN THIS PDF ARE OF THIS SPECIFIC BAG, BUT REPRESENT THE UNIVERSAL STEPS IN STFA BAGS.

Before we get started let's take a look at the color stop sheet that comes with your design files. Go ahead and make notes to help you with what colors you really need to use because many of them on here are there to force stops.

For Jack and Sally



Color stops 1-3 are your initial die line, zipper tack down and front exterior fabric/vinyl tack down. Do these in a color that will match your exterior vinyl
Color stop 4-5 are the applique die line and tack down.
Colors stops 6-8 are embroidery detail
Color stops 9-14 are construction steps where you'll add the lining and hardware so your thread should match your exterior vinyl/fabric.

Color stop 15 DO NOT STITCH This is there to make sure your machine doesn't auto center at the end and pull/tear/mess up your hard work.

For 4x4 Jack



Color stops 1-3 are your initial die line, zipper tack down and front exterior fabric/vinyl tack down. Do these in a color that will match your exterior vinyl
Color stop 4-5 are the applique die line and tack down.
Colors stops 6-7 are embroidery detail
Color stops 8-13 are construction steps where you'll add the lining and hardware so your thread should match your exterior vinyl/fabric.

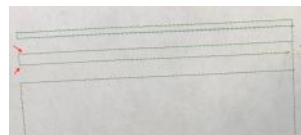
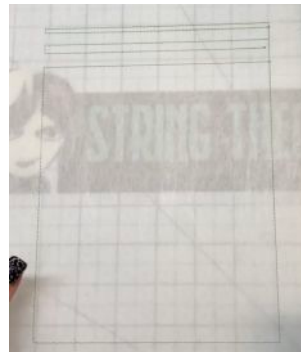
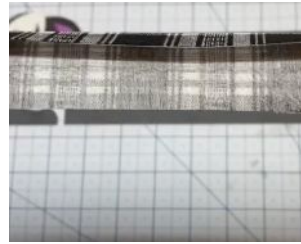
Color stop 14 DO NOT STITCH This is there to make sure your machine doesn't auto center at the end and pull/tear/mess up your hard work.

For 4x4 Sally



Color stops 1-3 are your initial die line, zipper tack down and front exterior fabric/vinyl tack down. Do these in a color that will match your exterior vinyl
Color stop 4-5 are the applique die line and tack down.
Colors stops 6-9 are embroidery detail
Color stops 10-15 are construction steps where you'll add the lining and hardware so your thread should match your exterior vinyl/fabric.

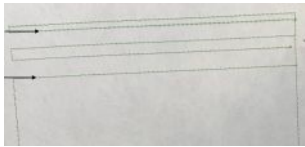
Color stop 16 DO NOT STITCH This is there to make sure your machine doesn't auto center at the end and pull/tear/mess up your hard work.



Step 1: First you're going to take your top front and bottom front lining fabric pieces and press one short edge on each under $\frac{1}{2}$ ". This will be the edge that goes along your zipper. You thought I was going to say Hoop some medium weight cutaway. Didn't you?

Step 2: Now you can hoop some medium weight cutaway and **Run Color stop 1.**

Step 3: Whew! That's hard to see isn't it. Sorry. Let me mark those. That's better. Things are a little different here again. There is an extra weird looking die line in your zipper area (marked with red arrows). We're going to use this later to place our lining and know where to trim out that stabilizer. So, if you think you might not be able to eyeball it after you cut this section of stabilizer out, flip your hoop over and use a pen/marker/pencil to extend those die lines out past the bag die line edges.



Step 4: Place your zipper between the lines that are 2nd and 5th from the top (marked with black arrows). Ignore that extra die line, remember we're going to cut that out later. **Run Color stop 2.**

Step 5: Find your 2" pieces of grosgrain ribbon or the 1"x 2" fabric pieces, and fold them in half. Place them over the zipper making sure the folded edge is on the INSIDE of the bag with the raw edges outside of the bag. The tab should be centered half in/half out of the bag. These will be your zipper tabs!

Step 6: Next find your exterior Vinyl (or fabric) top and bottom pieces. Got 'em? Good, place the cut (or folded if using fabric) edges along your zipper, making sure those edges are bucked right up against the teeth and that they are centered left and right over the bag die line. You guessed it now tape them down! We don't want anything doing any sort of shifty shifting. **Run Color stops 3-4**
3- will tack down your Vinyl/fabric (the top will only be partially tacked down, but that's ok, TRUST ME!)
4- will stitch your applique die line



Step 7: Now place your applique vinyl piece so it completely covers the die line and tape it down. Put the hoop back on the machine and **Run Color stop 5**
5- applique tack down

Step 8: Carefully trim your applique trying not to snip your tack down stitches.. Put the hoop back in your machine and

4x4 Jack peeps:

Run colorstops

6-7

6- GID scroll work

7- skull details & satin

Come back to us at **Step 9 for the lining.**

4x4 Sally peeps:

Step 8: Run
colorstops 6-9
6 – white eyeballs
7- face details
8- GID scroll work
9– satin
Come back to us
at **Step 9 for the lining.**

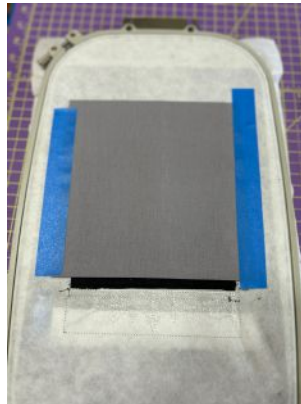
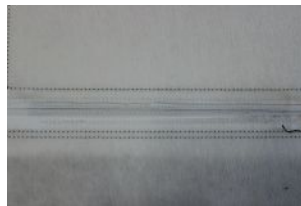
NBX Gang

Step 8 run color stops 6-8
6– inside the circle scene
7- GID scroll work
8 – satin

HEY! 4x4 PEEPS – You can come back innow!

Step 9: Now that the pretty part is all done, it's time to line this bag. First I want you to carefully remove the tape by your zipper head and fold your vinyl/fabric and ribbon out of the way to open up your zipper.

Now grab your seam ripper and put a small slit in the stabilizer between the zipper teeth.



Step 10: Remember that weird die line in the middle of the zipper area (the one I marked in red) you saw earlier, let's flip the hoop over and find that again. If you didn't extend the lines earlier but aren't feeling too confident in eyeballing things go ahead and do that now.

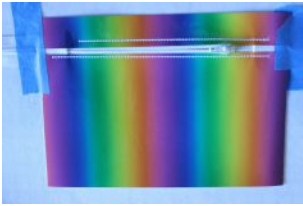
Grab your applique cutting scissors and carefully trim out the stabilizer along that weird die line. Don't trim all the way to the zipper tack, Now, Grab your lining piece for the bag bottom that you folded and pressed and Line the folded edge up with the bottom of the opening you cut. If you drew those lines you can use them to line up your fabric folded edges. Tape these down so gravity doesn't cause trouble.

Run Color Stop

4x4 Jack – 8
4x4 Sally – 10
NBX gang - 9

Step 11:Place the folded edge of the top lining piece along the top of opening you cut on the back of the hoop, tape it down and **Run Color Stop**

4x4 Jack – 9
4x4 Sally – 11
NBX gang - 10



Step 12: Take off the tape on the zipper head and move your zipper tab, fabric out of the way and open your zipper again. Flip the zipper pull toward the middle of the bag and tape it down so you don't accidentally stitch it into the side seam later. Place the hoop back on the machine and

Run Color Stop

4x4 Jack – 10

4x4 Sally – 12

NBX gang – 11

This will finish your top scroll stitching, your vinyl tack down and stitch die lines for your hardware

Step 13: Time to place the hardware. Grab your 5/8" piece(s) of grosgrain ribbons and thread them through your lobster claw(s) or d-ring(s). *You can choose to put one claw or ring on the side of your bag, two along the top, or all 3.*

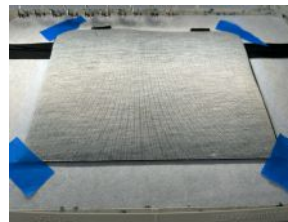
On this bag we're going to lay them with the hardware toward the **INSIDE** of the bag with the raw edges of the ribbon about 1/4" - 1/2" past the die line toward the **OUTSIDE** of the bag.

Run Color Stop

4x4 Jack – 11

4x4 Sally – 13

NBX gang – 12



Step 14: Take your main backing piece and lay it pretty side to pretty side, lining it up so it covers all the bag die lines. If you're unsure grab a pen and flip your fabric up/down at the corners and mark where those original pink die line outer corners are. Tape the fabric in the corners and

Run Color Stop

4x4 Jack – 12

4x4 Sally – 14

NBX gang – 13

Step 15: Flip your hoop over and place your lining fabric pretty side to pretty side. Tape this down securely because again, GRAVITY! And

Run Color Stop

4x4 Jack – 13

4x4 Sally – 15

NBX gang – 14

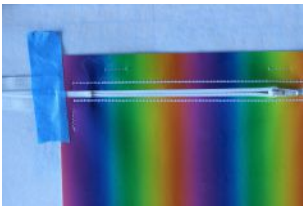
**DO NOT STITCH
COLOR STOP**

4x4 Jack – 14

4x4 Sally – 16

NBX gang - 15

This is dead stop that keeps your machine from automatically centering and tearing things up.

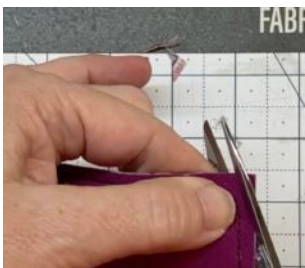




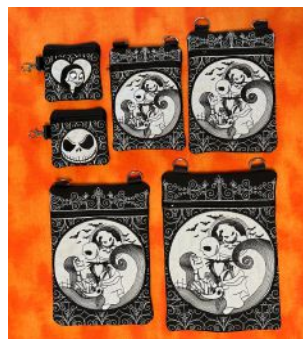
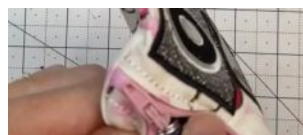
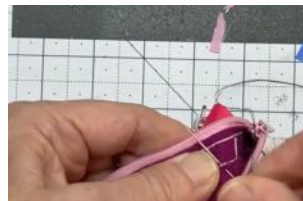
Step 16: Pop things out of your hoop look closely at the lining side, you will notice a place that is unstitched. This is your turning hole. Carefully cut from the outer edge of the fabric to just short of the stitch line on both sides of the turning hole. This makes a Turning Tab. Fold your Turning Tab up and tape it down so you don't accidentally cut it off.



Step 17: trim all 4 sides of your bag about 1/8" away from your stitch lines. You can use pinking shears or a rotary cutter and ruler. Just don't cut off your turney tab!



Step 18: If you didn't use pinking shears to trim the sides of your bag, use a scissors to round the corners so they lay nicer.



STEP 19: Turn your bag through the turning hole so that the lining is all you see, Yes it's inside out but that's ok. Reach in and pull off the tape on your hardware. Push in your turning tabs and the use a needle and thread to sew it closed. You can also use some sort of fusible seam tape to do this if needle and thread isn't your thing. You can pin your tabs if you want to keep things from shifting when you sew it up. Now turn the bag out through the zipper opening.

Step 20: Grab your blunt pokey outey tool of choice and push out your corners. If you used vinyl for your exterior, and your vinyl is not cooperating you can put it under a stack of books or wrap some felt around the edges and clip it with wonderclips to train it to lay flat.

TADA!!!!



Be sure to check out our YouTube channel:
<https://www.youtube.com/c/StringTheoryFabricArt>

Our store: <https://stringtheoryfabricart.com/>

AND our Facebook Fan Group where you will find more helpful hints, discounts, and coupons:
<https://www.facebook.com/groups/STFAFanGroup/>