

How to ITH Ice Skate Zip Bag

Materials: Medium weight cut away stabilizer.

Tapey Tape

(1-3) lobster claws or d-rings

(1-3) pieces 5/8" grosgrain ribbon 3" long

(2) Pieces 1" grosgrain ribbon 2" long or (2) pieces fabric 1" x 2"

(1) zipper that is about 2" longer than your bag size
Fusible fabric interfacing similar to SF101

5x7

Main fabric that has been interfaced

(1) 3" x 8" front top.

(1) 4 1/2" x 8" front bottom

(1) 6 1/4" x 8" back

Lining Fabric

(1) 3" x 8" front top

(1) 4 1/2" x 8" front bottom

(1) 7" x 8" back

Vinyl pieces for your ice skate applique

(1) 1 1/2" x 3"

(1) 3" x 5 3/4"

6x10

Main fabric that has been interfaced

(1) 3" x 9 1/2" front top

(1) 6" x 9 1/2" front bottom

(1) 8 x 9 1/2" back

Lining Fabric

(1) 3" x 9 1/2" front top

(1) 6" x 9 1/2" front bottom

(1) 8 x 9 1/2" back

Vinyl pieces for your boot applique

(1) 1 1/2" x 3 1/2"

(1) 3 3/4" x 7"

7x11

Main Fabric that has been interfaced

(1) 3 1/2" x 10 1/2" front top

(1) 6" x 10 1/2" front bottom

(1) 8 1/2" x 10 1/2" back

Lining Fabric

(1) 3 1/2" x 10 1/2" front top

(1) 6" x 10 1/2" front bottom

(1) 8 1/2" x 10 1/2" back

Vinyl pieces for your boot applique

(1) 2 1/4" x 4 1/2"

(1) 3 1/2" x 7 1/2"

8x12

Main Fabric that has been interfaced

(1) 3 1/2" x 12" front top

(1) 6 1/2" x 12" front bottom

(1) 9" x 12" back

Lining Fabric

(1) 3 1/2" x 12" front top

(1) 6 1/2" x 12" front bottom

(1) 9" x 12" back

Vinyl pieces for your boot applique

(1) 2" x 4"

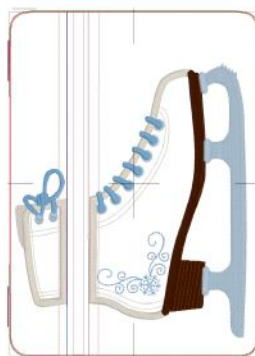
(1) 4" x 8 1/2"

Special Notes:

Before you start you're going to want to prep your fabric for the main exterior of your bag. If you didn't apply fusible interfacing before cutting your pieces do that now.

If you don't want to cut the smaller vinyl pieces you can use a larger piece for your appliques and cut it down as you go.

Before we get started let's take a look at the color stop sheet that comes with your design files.



Color Stop	Color	Description
1-3	White	Initial die line, zipper tack down and front exterior fabric tack down.
4-5	White	Embroidery detail.
6-9	White	Applique die lines and tack downs for the ice skate boot vinyl.
10	White	Boot shadow detail and the die line for your lower boot vinyl applique.
12	White	Skate boot satin outline.
13	White	Satin on your skate boot sole.
14-15	White	Remaining details on the boot.
16-21	White	Construction steps where you'll add the lining and hardware.
22	White	DO NOT STITCH This is there to make sure your machine doesn't auto center at the end and pull/tear/mess up your hard work.

Color stops 1-3 are your initial die line, zipper tack down and front exterior fabric tack down. Do these in a color that will match your fabric.

Color stops 4-5 are embroidery detail do these in the color stated or ones that you choose for your boot sole.

Color stops 6-9 are the applique die lines and tack downs for the ice skate boot vinyl. These should match/coordinate with your boot vinyl color

Color stop 10 is both boot shadow detail and the die line for your lower boot vinyl applique. These should match/coordinate with your boot vinyl color

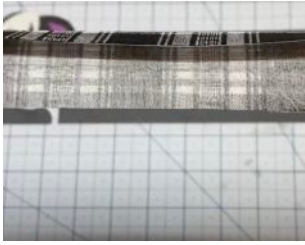
Color stop 12 is your skate boot satin outline and should match your skate boot vinyl

Color stop 13 is the satin on your skate boot sole and should match your darker boot sole color used for colors stop 4.

Color stops 14-15 are the remaining details on the boot and can be done in the colors on the color chart or whatever you wish to make the skate boot swirl, snowflake design, and skate boot laces.

Color stops 16-21 are construction steps where you'll add the lining and hardware so should match your fabric.

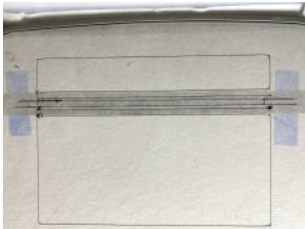
Color stop 22 **DO NOT STITCH This** is there to make sure your machine doesn't auto center at the end and pull/tear/mess up your hard work.



Step 1: You thought I was going to say “Guess what step one is, if you said, “hoop a piece of cutaway stabilizer you win” didn’t you. I told you this bag is totally different! First you’re going to take your top front and top bottom main exterior fabric and lining pieces and press one long edge on each under $\frac{1}{2}$ ”. This will be the edge that goes along your zipper.



Step 2: Now you can hoop that medium weight cutaway and **Run Color stop 1.**



Step 3: Things are a little different here again. There is an extra weird looking die line in your zipper area. We’re going to use this later to place our lining and know where to trim out that stabilizer. So, if you think you might not be able to eyeball it after you cut this section of stabilizer out, flip your hoop over and use a pen/marker/pencil to extend those die lines out past the bag die line edges.



Step 4: Place your zipper along the line that is 2nd from the top, ignore that we’re extra die line remember we’re going to cut that out later.
Run Color stop 2.



Step 5: Find your 2” pieces of grosgrain ribbon or the 1”x 2” fabric pieces you cut singe the ends with a lighter to keep them from fraying and fold them in half. Place them over the zipper making sure to line up that $\frac{1}{2}$ ” mark with the bag die line and tape those bad boys down. These will be your zipper tabs!



Step 6: Next find your main fabric top and bottom pieces. Got 'em? Good, place the folded and pressed edges along your zipper, making sure those edges are bucked right up against the teeth and that they are centered left and right over the bag die line. You guessed it now tape them down! We don't want anything doing any sort of shifty shifting.

Run Color stops 3-6

3- will tack down your fabric (the top will only be partially tacked down, but that's ok, TRUST ME!)

4- will stitch part of the skate boot sole

5- will stitch the detail on the skate boot sole

6- will stitch the die line for the toe of the skate boot applique.

Step 7: Place your vinyl for the lower skate boot area. For this applique you'll want to have a nice STRAIGHT edge on your vinyl and place that right along the folded edges of your bottom front fabric where it bucks up to the zipper teeth. and **Run Color stop 7-8**

7- Bottom applique tack down.

8- Die line for upper skate boot on top part of bag.

The materials list gives you sizes to cut your vinyl pieces, or you can just grab a big 'ol piece of scrap vinyl.



Step 8: Use your favorite applique cutting scissors and trim your vinyl nice and close, but be careful that you don't cut the tack down stitches, or the fabric underneath. Don't trim along the top tack down line, just trim continuing the line from the side of the skate boot, this way you won't have a large gap between the vinyl piece making it look like your skate boot has been split in two.

Step 9: This is what things should look like now. For this applique you'll want to have a nice STRAIGHT edge on your vinyl and place that right along the folded edges of your top front fabric where it bucks up to the zipper teeth. Tape in place and **Run Color stop 9.**





Step 10: What's next? If you guessed trim down your vinyl with your applique scissors YOU WIN!

Don't trim along the bottom tack down line, just trim continuing the line from the side of the skate boot, just like you did on the top.

Once you're done trimming put that hoop back on the machine and **Run Color stops 10-15**



10- This will stitch the shadow for the top of the skate boot.

11- This will stitch the metal skate parts and the boot eyelets

12- skate boot Satin outline (thread should match your vinyl)

13- skate boot sole satin (between the boot upper and sole) should match the sole color

14- This will swirl detail on the skate boot

15- This will stitch the snowflake detail and the laces.



Step 13: Pull up the tape on the zipper head size and move everything out of the way and slide your zipper open for now.

Take your seam ripper and carefully slice an opening in your stabilizer.

Remember that weird die line in the middle of the zipper area you saw earlier, let's flip the hoop over and find that again.

If you didn't extend the lines with a pen/pencil/marker earlier but aren't feeling too confident in eyeballing things go ahead and do that now.

Grab your applique cutting scissors and carefully trim out the stabilizer along that weird die line. Don't trim all the way to the zipper tack, just that center section marked off with the new die line that hasn't been on any other STFA bag.

Flip back to the front and close your zipper back up and retape everything down.



Step 13: (cont.)

Now, grab your lining piece for the bag bottom that you folded and pressed and line the folded edge up with the bottom of the opening you cut. If you drew those lines, you could use them to line up your fabric folded edges.

Tape these down so gravity doesn't cause trouble.

Run Color stops 16.

Step 14:

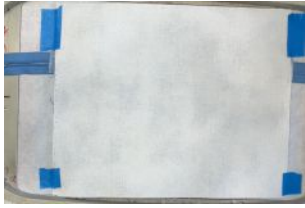
Place the folded edge of the top lining piece along the top of opening you cut on the back of the hoop, tape it down and **Run Color Stop 17.**



Step 15: Take off the tape on the zipper head and move your zipper tab, fabric out of the way and open your zipper again. Place the hoop back on the machine and **Run Color stop 18. This will finish your top fabric tack down and stitch die lines for your hardware.**

Step 16: Time to place the hardware. Grab your 5/8" piece(s) of grosgrain ribbons and thread them through your lobster claw(s) or d-ring(s). You can choose to put one claw or ring on the side of your bag or two along the top.

Normally we put these on at the beginning of the bag and fold them down, but on this bag we're going to lay them with the hardware toward the **INSIDE** of the bag with the raw edges of the ribbon about 1/4" past the die line toward the **OUTSIDE** of the bag. **Run color stop 19.**

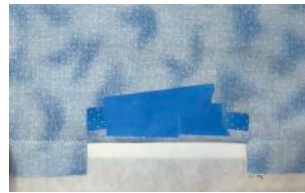


Step 17: Take your main fabric backing piece and lay it pretty side to pretty side, lining it up on the top edge. It will seem a little short on the bottom but there is plenty of fabric past the die line, so it's all A-OK! Tape the fabric in the corners and **Run Color stop 20.**

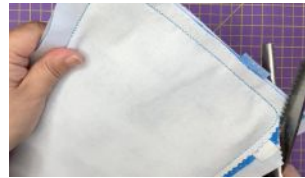


Step 18: Flip your hoop over and place your lining fabric pretty side to pretty side, lining it up on the top edge. Tape this down securely because again, GRAVITY! And **Run Color stop 21.**

**DO NOT STITCH
COLOR STOP 22.
This is dead stop
that keeps your
machine from
automatically
centering and
tearing things up.**



Step 19: Pop things out of your hoop look closely at the lining side, you will notice a place that is unstitched. This is your turning hole. Carefully cut from the outer edge of the fabric to just short of the stitch line on both sides of the turning hole. This makes a Turning Tab. Fold your Turning Tab up and tape it down so you don't accidentally cut it off.



Step 20: trim all 4 sides of your bag about 1/8" away from your stitch lines. You can pinking shears and hand cut if you prefer. Just don't cut off your turney tab!

Step 21: If you didn't use pinking shears to trim the sides of your bag, use some scissors to round the corners so they lay nicer.



Step 22: Turn your bag through the turning hole so that the lining is all you see. Yes, it's inside out but that's ok. Reach in and pull off the tape on your hardware. Push in your turning tabs and then use a needle and thread to sew it closed. You can also use some sort of fusible seam tape to do this if needle and thread isn't your thing. Or you can be like #voodooystickmod and just glue it shut with some fabric glue. Now turn the bag out through the zipper opening.



Step 23: Grab your blunt pokey outey tool of choice and push out your corners.

If you used vinyl for your exterior, and your vinyl is not cooperating you can put it under a stack of books or wrap some felt around the edges and clip it with wonderclips to train it to lay flat.



Perfect 10... uh what is a perfect score in ice skating anyway??



STRING THEORY
FABRIC ART

Be sure to check out our YouTube channel:

<https://www.youtube.com/c/StringTheoryFabricArt>

Our store: <https://stringtheoryfabricart.com/>

AND our Facebook Fan Group where you will find more helpful hints, discounts, and coupons:

<https://www.facebook.com/groups/STFANGroup/>