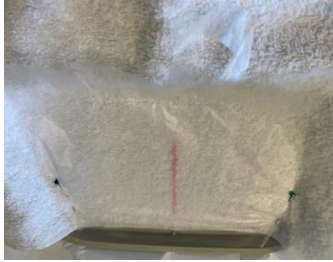


How to hooded towel with Marshmallow Man peeker

This project uses a sewing machine for final assembly



Materials:
Medium weight cut away
Water soluble stabilizer (WSS)
Hand towel
Bath towel
Applique material(s): vinyl,
fleece or interfaced cotton
woven or flannel

Step 1: Hey, guess what step 1 is? If you guessed "hoop a piece of stabilizer," YOU WIN!

Step 2: Fold the hand towel in half to find the center of the long side. Add a pin or chalk line to mark the center.

Step 3: Float the towel on the stabilizer matching the pinned center to the center of the long edge of the hoop. Put the finished edge of the towel close to the side edge of the hoop. You might need a shoosh of adhesive spray to keep it in place and/or tape it to the hoop. If the towel is heavy, you can pin it to the stabilizer in the very corners of the hoop, outside of the stitch path.

Float some WSS on the towel and tape in place. Run **color stops 1 through 3** for the ribbon, ribbon shading and the applique dieline.



Step 4: Now that you have the dieline, you can float your applique material so that it covers the entire dieline.

If you use a woven fabric, especially one that frays, make sure you use a woven interfacing on it before you lay it down on the dieline.

Once you've taped down your applique material so it doesn't move around, pop it back into the machine & run **color stop 4** for the applique tack down line.

Step 5: Applique trim the vinyl as close to the zigzag stitches as possible without cutting them.

Pop that hoop back in the machine & run the rest of the **color stops 5 through 9**.

Peeker complete!
Tear off the WSS and flip the towel over to trim off the excess cutaway stabilizer and clean up all the thread tails.

Keep in mind that this part of the towel is not covered up and will come in contact with the head of the wearer. Make it as neat as possible.

Woohoo! We're on to the hooded towel assembly! *The rest of these steps are done using a sewing machine.*

To hide the raw edges of the towel, we're going to do a French seam up the back of the hood. To do a French seam, we sew one seam on the outside of the hood then turn it inside out to encase the raw edges you just sewed into another seam. When you cut down the hand towel, you need to allow for extra seam allowance based on the plushness of the towels you use.



Step 1: It's time to cut the hand towel down to size.

Fold the towel in half (folding your design in half) and measure 10" from the finished edge of the towel (the side you added the design to). Cut the width of the towel along the long edge to 10". You can choose to make it smaller or larger depending how big you want the hood.



Step 2: You will also want to cut the finished edges off the short ends of the towel. If you don't, there will be too many thicknesses to stitch through.



Step 3: Fold the towel in half, right (design) side out, matching the short ends of the towel.



With the finished edge of the towel on the left, stitch about 1/4" seam allowance along the long raw edge starting at the short ends of the towel to the fold of the towel, backstitching at the start & end of that seam. Trim close to the seam to decrease the seam allowance.



Step 4: Turn the hood inside out and roll the seam between your fingers so that you can feel the raw edges though the towel.

Sew along this same edge with a big enough seam allowance that encases the raw edges in the new seam, generally 3/8" to 1/2". The size of the seam will vary if you use a plusher towel, but try to keep it as narrow as possible. It will help when you attach the hood to the bath towel.



Turn the hood right side out again. You will see that there are no raw edges showing.



We're in the homestretch now!

Step 5: Find the center of your bath towel along one long side and mark with a pin.

With right side of the bath towel against the right side of the hood, match the seam on the hood to the center marked on the bath towel.

If you are using a different color bath towel than you used for your hood, this is where you want to change your thread color. The top thread should match your bath towel and the bobbin should match your hood.



Step 7: After trimming the excess hood, lay the whole thing flat open with the hood on the right and the bath towel on the left, wrong sides up (the seam you just sewed & trimmed should be showing).

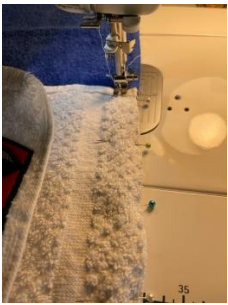
You now have somewhat of a flap on the bath towel. Lay that flap over the seam to the right so that it covers the seam's raw edges. Since



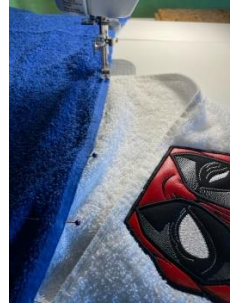
Pin the hood to the towel along the edge of the hood.



Step 6: Take the project back to the sewing machine & using about 1/2" seam allowance, sew down the pinned side, backstitching at the beginning & the end to secure. You may need to slow down when you get to the French seam because it will be bulky.



Trim the **hood only** as close to the stitch line as you can.



the bath towel still has finished edges, it will look nice when we stitch it down. You can pin this down if you like.

Stitch the finished edge of the bath towel down, making sure that you are completely covering up the raw edges as you go. Backstitch at the beginning & the end. You may need to slow down at the French seam.

Inside:



If you look at the inside & outside of the project, you will see that there are no raw edges.

Outside:



Well done! You have now successfully made a hooded towel with a peeker design! Pat yourself on the back!