

How to add half designs to a hoodie



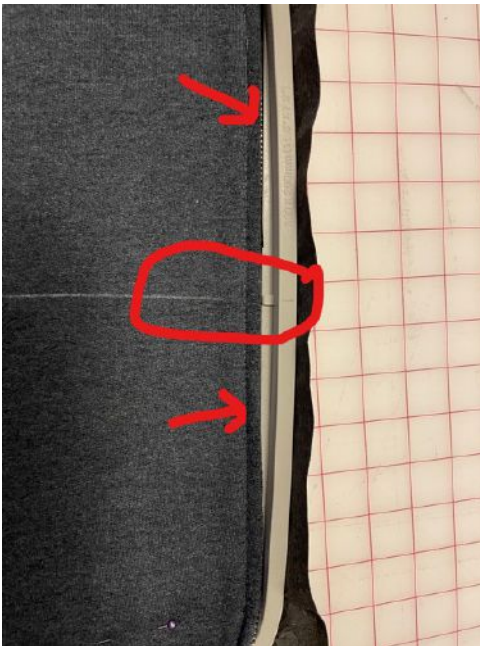
I print out the pdf of the designs and cut them out. They are true to size.



Use these templates to find your placement on your hoodie. Once I choose the position, I draw a line across both sides of the zipped hoodie using a chalk pen.

Hoop a layer of heavy cut away and float another layer. (Its my opportunity to use us those larger scraps of stabilizer!) This design is very stitch intensive, so **DO NOT USE TEAR AWAY!**

You could also iron fusible woven interfacing on the inside of the hoodie.



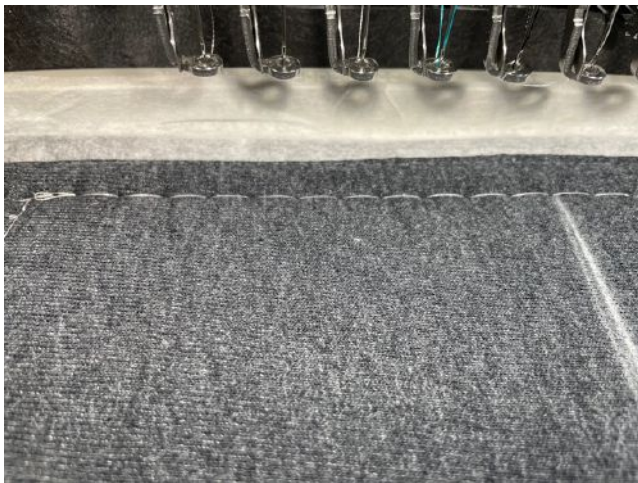
After unzipping the hoodie, float it, aligning the chalk line with the center line on the hoop. Make sure to butt the zipper teeth up against the hoop side.



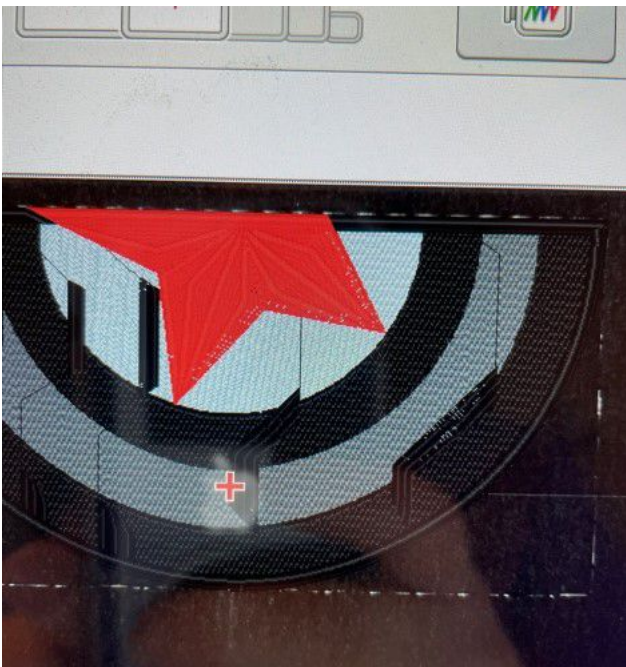
See the bottom arrow? It's pointed at the seam for the zipper. You really don't want to have any stitches past this line of stitching. You will get too close to the zipper and be unable to zip the hoodie or worse, stitch on the metal zipper, which will break your needle & possibly your machine.



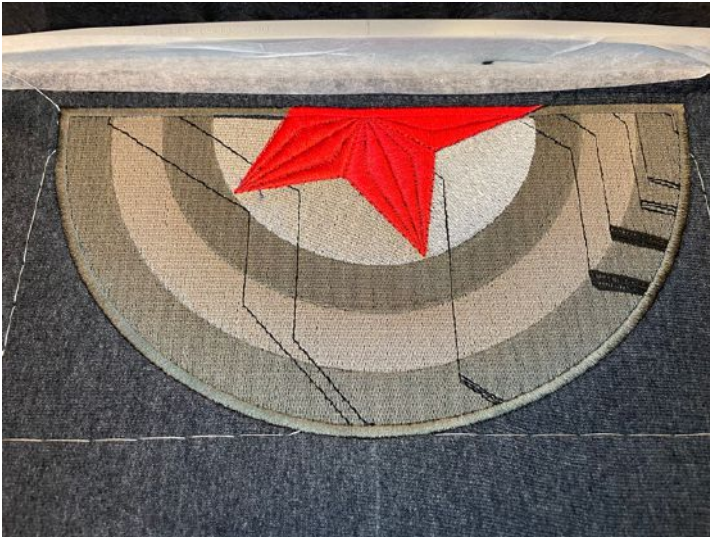
Since that seam is hard to see because of the matching thread, I put a piece of tape with the edge on the seam to make it more visible. It also serves to hold the edge and zipper down. I also pin the hoodie to the stabilizer because it's kind of heavy.



When I get to the machine, I do a basting box about $\frac{1}{4}$ - $\frac{1}{2}$ " away from that seam.



I scan the hoop and move the design up to about $\frac{1}{8}$ " away from the basting line. Because of the denseness of this design, it will push a little further than you anticipate, especially on knit fabric like a sweatshirt.



You can see here that when the design stitched, it pushed beyond the basting stitch and it moved closer to the taped seam line.

Remove tape & basting stitches then cut off excess stabilizer from the inside of the hoodie.

Repeat with other side!



X-large hoodies



Large hoodie

Size recommendations:

- 5x7 designs on medium hoodie or smaller
 - 6x10 on large hoodie or bigger