

## How to ITH Fully lined Keyboard bag with applique

*Materials:* Medium weight cut  
away stabilizer.

Tapey Tape

(1-3) lobster claws or d-rings

(2-3) pieces 5/8" grosgrain  
ribbon 3" long

(2) Pieces grosgrain ribbon 1"  
x 2"

(1) zipper that is about 2"  
longer than your bag size

## Measurements are Height x Width.

### 6x10

#### **EXTERIOR**

(1) 1 ½" x 11"

(1) 6 ½" 11"

(1) 7 ½" x 11"

#### **Lining**

(1) 1 ½" x 11"

(1) 6 ½" 11"

(1) 7 ½" x 11"

#### **Applique**

(1) 4 x 11"

### 7x11

#### **EXTERIOR**

(1) 1 ½" x 11 ½"

(1) 7 ¼" x 11 ½"

(1) 8" x 11 ½"

#### **Lining**

(1) 1 ½" x 11 ½"

(1) 7 ¼" x 11 ½"

(1) 8" x 11 ½"

#### **Applique**

(1) 4 ½" x 11 ½"

### 8x12

#### **EXTERIOR**

(1) 1" X 12"

(1) 7 ¼" X 12"

(1) 8 ½" X 12"

#### **Lining**

(1) 1 ½" x 12"

(1) 8" x 12"

(1) 9 ½" x 12"

#### **Applique**

(1) 5 " x 12 ½"

## **SPECIAL NOTES:**

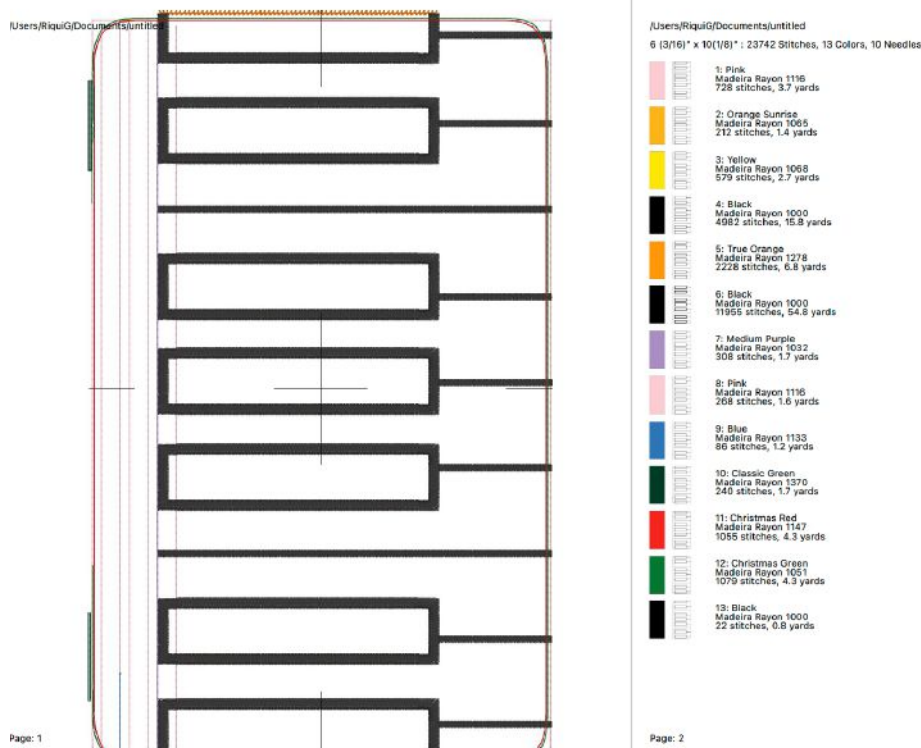
If you are going to use all vinyl it is recommended that the applique vinyl is a thinner type like glitter canvas or other similar thickness vinyl.

Measurements have been given for **FABRIC** exterior and if you would like to use vinyl subtract ½" to the height of each piece for the top and bottom fronts.

**Do you have to interface your exterior fabric?**

**No**, but if you prefer a stouter bag then interfacing will give you that.

**Before we get started let's take a look at the color stop sheet that comes with your design files. Go ahead and make notes to help you with what colors you really need to use because many of them on here are there to force stops.**



Color stops 1-3 are your initial die line, zipper tack down and front exterior fabric/vinyl tack down. Do these in a color that will match your exterior vinyl/fabric.

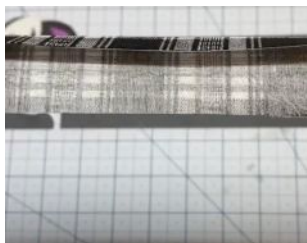
Color stop 4 is a design element and applique die line

Color stop 5 is the applique tack down.

Colors stop 6 is the applique satin stitching.

Color stops 7-12 are construction steps where you'll add the lining and hardware so your thread should match your exterior vinyl/fabric.

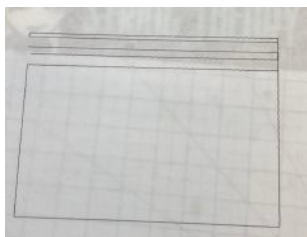
**Color stop 13 DO NOT STITCH** This is there to make sure your machine doesn't auto center at the end and pull/tear/mess up your hard work.



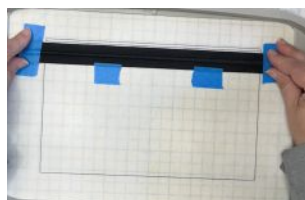
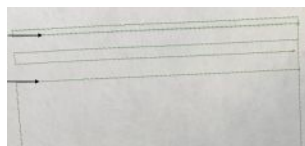
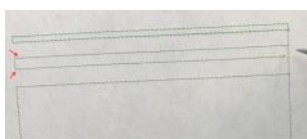
**Step 1:** First you're going to take your top front and bottom front lining fabric pieces and press one short edge on each under  $\frac{1}{2}$ ". This will be the edge that goes along your zipper. Do this to your exterior as well if you're using Fabric instead of vinyl. You thought I was going to say Hoop some medium weight cutaway. Didn't you?



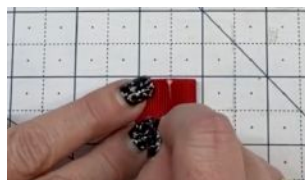
**Step 2:** Now you can hoop some medium weight cutaway and **Run Color stop 1.**



**Step 3:** Whew! That's hard to see isn't it. Sorry. Let me mark those. That's better. Things are a little different here again. There is an extra weird looking die line in your zipper area (marked with red arrows). We're going to use this later to place our lining and know where to trim out that stabilizer. So, if you think you might not be able to eyeball it after you cut this section of stabilizer out, flip your hoop over and use a pen/marker/pencil to extend those die lines out past the bag die line edges.



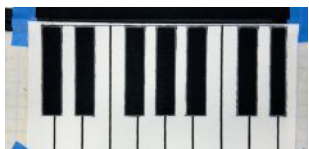
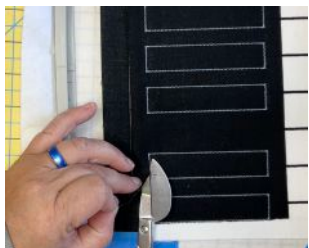
**Step 4:** Place your zipper between the lines that are 2<sup>nd</sup> and 5<sup>th</sup> from the top (marked with black arrows). Ignore that extra die line, remember we're going to cut that out later. **Run Color stop 2.**



**Step 5:** Find your 2" pieces of grosgrain ribbon or the 1"x 2" fabric pieces you cut singe the ends with a lighter to keep them from fraying, and fold them in half, then mark those little folded squares at  $\frac{1}{2}$ "



Place them over the zipper making sure to Line up that  $\frac{1}{2}$ " mark with the bag die line and tape those bad boys down. These will be your zipper tabs!



**Step 6:** Next find your exterior fabric (or vinyl) top and bottom pieces. Got 'em? Good, place the folded (or cut if using vinyl) edges along your zipper, making sure those edges are bucked right up against the teeth and that they are centered left and right over the bag die line. You guessed it now tape them down! We don't want anything doing any sort of shifty shifting.

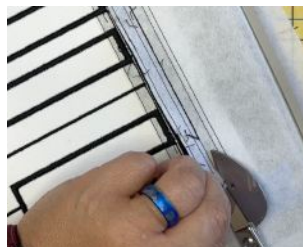
**Run Color stops 3-4**  
**3- will tack down your Vinyl/fabric (the top will only be partially tacked down, but that's ok, TRUST ME!)**

**4- the key separation detail and applique die lines**

**Step 7:** Grab your applique piece. Make sure it completely covers the die lines and tape it down. Put the hoop back on the machine and **Run Color stop 5.**  
**5- applique tack down**

**Step 8:** Get those applique scissors and trim around the keys being careful to not snip your stitches. Put the hoop back on the machine and

**Run color stop 6.**  
**6- satin applique outline**

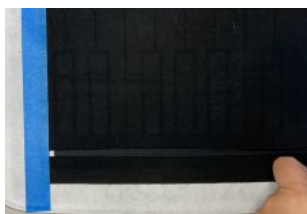


**Step 9:** Now that the pretty part is all done, it's time to line this bag. First I want you to carefully remove the tape by your zipper head and fold your vinyl/fabric and ribbon out of the way to open up your zipper.

Now grab your seam ripper and put a small slit in the stabilizer between the zipper teeth.

**Step 10:** Remember that weird die line in the middle of the zipper area (the one I marked in red) you saw earlier, let's flip the hoop over and find that again. If you didn't extend the lines earlier but aren't feeling too confident in eyeballing things go ahead and do that now.

Grab your applique cutting scissors and carefully trim out the stabilizer along that weird die line. Don't trim all the way to the zipper tack, just that center section marked off with the new die line that hasn't been on any other STFA bag. Flip your hoop back over and zip your zipper back up and re-tape it down.



**Step 10: (cont.)** Now, grab your lining pieces that you folded and pressed and place them along the zipper. If you drew those lines earlier, you could use them to line up your fabric folded edges.

Tape these down so gravity doesn't cause trouble.

**Run Color Stops 7 and 8.**



**Step 11:** Take off the tape on the zipper head and move your zipper tab, fabric out of the way and open your zipper again. Flip the zipper pull toward the middle of the bag and tape it down, so you don't accidentally stitch it into the side seam later. Place the hoop back on the machine and **Run Color stop 9.**

**This will finish your top vinyl tack down and stitch die lines for your hardware.**



**Step 12:** Time to place the hardware. Grab your 5/8" piece(s) of grosgrain ribbons and thread them through your lobster claw(s) or d-ring(s). *You can choose to put one claw or ring on the side of your bag, two along the top, or all 3.*

On this bag we're going to lay them with the hardware toward the **INSIDE** of the bag with the raw edges of the ribbon about 1/4" - 1/2" past the die line toward the **OUTSIDE** of the bag.

**Run color stop 10.**



**Step 13:** Take your main backing piece and lay it pretty side to pretty side, lining it up so it covers all the bag die lines. If you're unsure grab a pen and flip your fabric up/down at the corners and mark where those original pink die line outer corners are. Tape the fabric in the corners and **Run Color stop 11.**



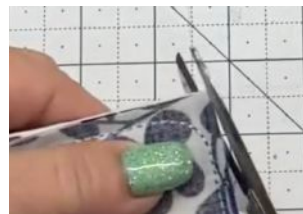
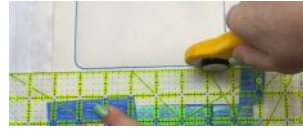


**Step 14:** Flip your hoop over and place your lining fabric pretty side to pretty side. Tape this down securely because again, GRAVITY! And **Run Color stop 12.**

**DO NOT STITCH COLOR STOP 13. This is dead stop that keeps your machine from automatically centering and tearing things up.**



**Step 15:** Pop things out of your hoop look closely at the lining side, you will notice a place that is unstitched. This is your turning hole. Carefully cut from the outer edge of the fabric to just short of the stitch line on both sides of the turning hole. This makes a Turning Tab. Fold your Turning Tab up and tape it down so you don't accidentally cut it off.



**Step 16:** trim all 4 sides of your bag about 1/8" away from your stitch lines. You can pinking shears and hand cut if you prefer. Just don't cut off your turney tab!

**Step 17:** If you didn't use pinking shears to trim the sides of your bag, use some scissors to round the corners so they lay nicer.



**STEP 18:** Turn your bag through the turning hole so that the lining is all you see, yes, it's inside out but that's ok. Reach in and pull off the tape on your hardware. Push in your turning tabs and the use a needle and thread to sew it closed. You can also use some sort of fusible seam tape to do this if needle and thread isn't your thing. Or you can just use some fabric glue to glue it shut. Now turn the bag out through the zipper opening.



**Step 19:** Grab your blunt pokey outey tool of choice and push out your corners.

If you used vinyl for your exterior, and your vinyl is not cooperating you can put it under a stack of books or wrap some felt around the edges and clip it with wonderclips to train it to lay flat.

**Time to Tickle the Ivories and Ebonies!**



**STRING THEORY**  
FABRIC ART

Be sure to check out our YouTube channel:

<https://www.youtube.com/c/StringTheoryFabricArt>

Our store: <https://stringtheoryfabricart.com/>

AND our Facebook Fan Group where you will find more helpful hints, discounts, and coupons:

<https://www.facebook.com/groups/STFAFanGroup/>