

How to ITH stuffie with raw edge limbs design stuffie

SPECIAL NOTES:

This design can be a stuffie or a fob. The design used here may differ from your chosen stuffie/fob, but the general steps are the same.

Materials:

Medium cutaway stabilizer
Clear wash away stabilizer topping
(2) piece nonfraying fabric for limbs such as felt.
(2) pieces of fabric of choice
stuffing
*505 spray
*painter's tape
Starred items are optional.

Before we get start stitching, let's look at the Color Stop PDFs that came in your zip file. This has a few of them.



Step 1: Guess what step 1 is? If you guessed hoop up some medium weight cutaway, you win!!

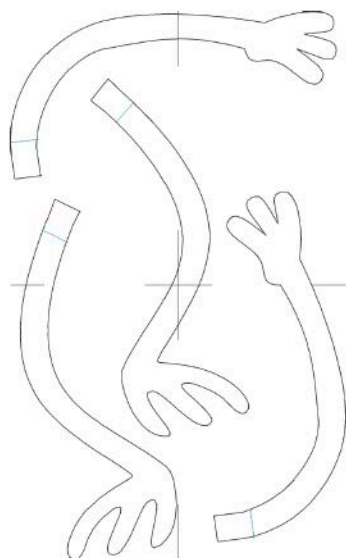


Run Color Stop 1 on your blank stabilizer only. This is going to give you the die line, so you know where in the hoop to place your fabric.



Step 2: Place the fabric for the front of the limbs making sure to completely cover your die line secure with tap or pins and **RUN Color stop 2.**

Color Stop 2: limb placement/registration marks



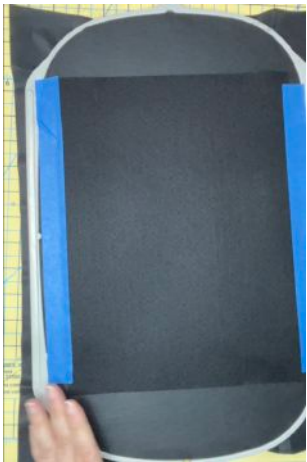
6" x 9" (3/4)" : 3365 Stitches, 3 Colors, 3 Needles
1. True Orange
Machete Rayon 1278
820 stitches, 3.2 yards
2. Medium Turquoise
Machete Rayon 1086
85 stitches, 1.6 yards
3. Black
Machete Rayon 1000
2450 stitches, 9.2 yards

The stuffie in this PDF has limbs, so you are going to have a couple of hoopings. We'll do the limbs first.

The first color stop is the Die line that will show you where to place your fabric. You're going to run this before placing your fabric.

Color Stop 2 has placement registration lines you will use for placing the limbs.

The last color stop is your final stitch line, and you will add your backing fabric **BEFORE** you run this color stop.



Step 3:
Flip your hoop over and tape your backing fabric on to the hoop. Put the hoop back on your machine and **RUN COLOR STOP 3.**



Step 4: Remove your limbs from the hoop and carefully trim around them leaving about 1/8"

Once the limbs are all cut out set them aside for now.

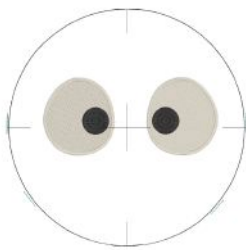


Step 1: Guess what step 1 is? If you guessed hoop up some medium weight cutaway, you win!!



Run Color Stop 1 on your blank stabilizer only. This is going to give you the die line, so you know where in the hoop to place your fabric.

Now let's look at the color stop sheet for the main stuffie.



Color	Stop	Description
Black	1	Die Line
Black	2	Eye Whites
Black	3	Pupils and Limb Placement Lines
Black	4	Limb Tack Down
Black	5	Final Stitch Line

The first color stop is the Die line that will show you where to place your fabric. You're going to run this before placing your fabric.

Color Stop 2 and 3 are the eyes and the placement lines for limb attachment.

Color stop 4 is limb tack down.

Color stop 5 is your final stitch line, and you will add your backing fabric BEFORE you run this color stop.



Step 2: Place the fabric for the front of the stuffie making sure to completely cover your die line and place a piece of clear water-soluble stabilizer/topper over it, secure with tape or pins and **RUN Color stop 2 and 3.**

Color Stop 2: eye whites
Color Stop 3: pupils and limb placement lines.



Step 3:
Cut the **WSS ONLY** just up to but not through the placement stitching lines.



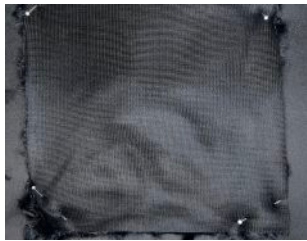
Step 4: Place the limbs in the style you wish making sure the main part of the limbs is toward the INSIDE of the stuffie.

Run Color Stop 4.



Step 5: Remove the WSS and carefully roll, bend, and basically wad your limbs up in the center of your stuffie. You can tape them if you wish. Place your backing fabric Pretty side DOWN over the limbs and pin or tape it in place and

Run Color Stop 5.



Step 6: Remove your stuffie from the hoop and carefully snip up to the stitching on either side of the opening.



Step 7: Carefully trim around your stuffie being careful not to cut the stitching. You can take a scissor and snip any curves, so it lays nicer after turning, again make sure not to snip your stitching.



Step 8: Turn your stuffie right side out, use a blunt tool to poke out any appendages, and fill 'em up with fluff and sew them shut!



All done. How cute are these. Now go make a dozen more.



STRING THEORY
FABRIC ART

Be sure to check out our YouTube channel:

<https://www.youtube.com/c/StringTheoryFabricArt>

Our store: <https://stringtheoryfabricart.com/>

AND our Facebook Fan Group where you will find more helpful hints, discounts, and coupons:

<https://www.facebook.com/groups/STFAFanGroup/>